

**New Jersey Department of Health and Senior Services**  
**Communicable Disease Service**  
**Influenza Activity Summary**  
**Week Ending February 17, 2007 (MMWR Week 7)**

**Influenza activity level:**    **REGIONAL**

No Activity- At least 2 of 3 parameters at or below state baseline **AND** no lab confirmed cases

Sporadic – At least 2 of 3 parameters above state baseline **AND** confirmed laboratory cases anywhere in the state within previous 3 weeks **OR** at least one laboratory confirmed outbreak in an institution anywhere in the state

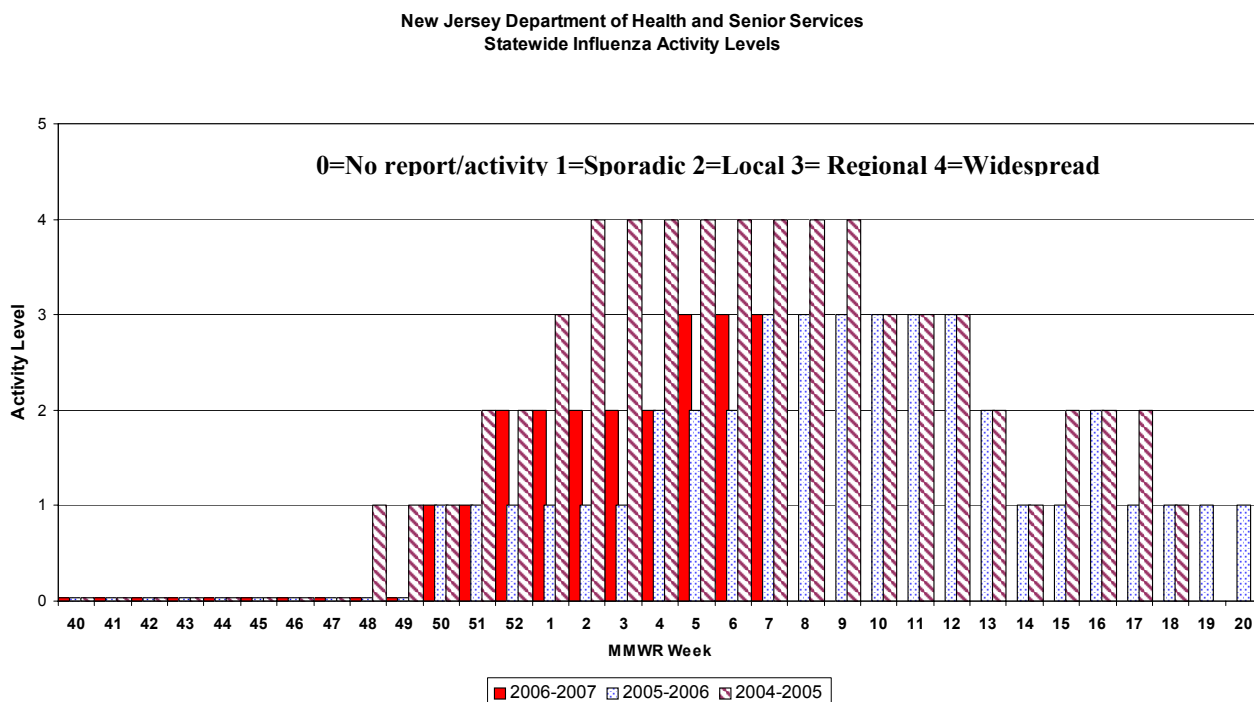
Local – At least 2 of 3 parameters above state baseline in a single county **AND** confirmed laboratory cases from that same county within the previous 3 weeks (other counties may be above baseline without lab confirmed cases) **OR** confirmed outbreaks in 2 or more institutions in a single county

Regional – At least 2 of 3 parameters above state baseline in  $\geq 2$  but  $\leq 10$  counties **AND** laboratory confirmed cases from these same counties in past 3 weeks **OR** confirmed outbreaks institutions in  $\geq 2$  but  $\leq 10$  counties

Widespread – At least 2 of 3 parameters above state baseline in  $> 10$  counties **OR** institutional outbreaks in  $> 10$  counties **AND** lab confirmed influenza cases in previous 3 weeks.

Parameter = School, emergency department, or long term care weekly surveillance data

Baseline is calculated by taking the average of statewide percentages of ILI for a 3 year (2004, 2005, 2006) period during months when influenza is less likely to be circulating (May-August). Weeks in which less than 4 counties reported were not included in the calculation.



## Regional Data

### **REGIONAL ACTIVITY – NW, NE, AND CE SPORADIC ACTIVITY - SOUTH NO ACTIVITY - CW**

**NOTE:** More the half of the counties reporting in the NE, NW, and CE public health regions were above state baseline and had laboratories confirmed by viral isolation in the previous three weeks. The south region had 2 or 3 parameters above state baseline and one county in this region had a positive laboratory in the previous 3 weeks. One county in the CW region has positive laboratories by viral isolation in the past 3 weeks, however, 2 of the 3 parameter for this region was not above baseline.

#### Public Health Regions

NW Region (Morris, Passaic, Sussex, Warren)

NE Region (Bergen, Essex, Hudson)

CW Region (Hunterdon, Mercer, Somerset)

CE Region (Middlesex, Monmouth, Ocean, Union)

South Region (Atlantic, Burlington, Camden, Cape May, Cumberland, Gloucester, Salem)

No Activity- At least 2 of 3 parameters at or below state baseline **AND** no lab confirmed cases in the public health region

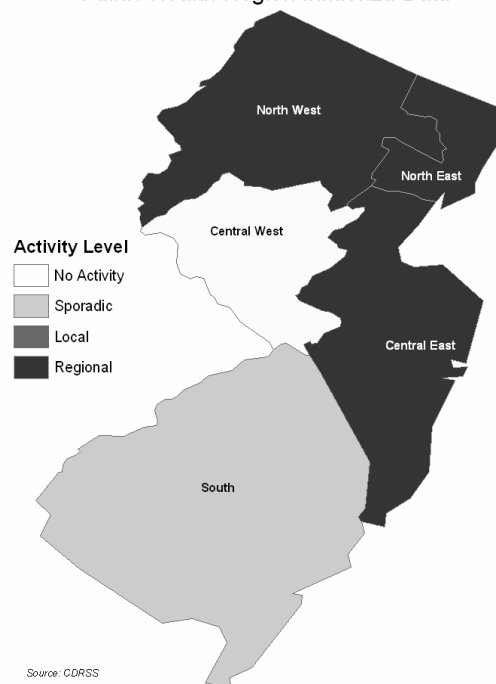
Sporadic – At least 2 of 3 parameters above state baseline **AND** confirmed laboratory cases anywhere in the public health region **OR** at least one laboratory confirmed outbreak in an institution anywhere in the public health region

Local – At least 2 or 3 parameters above state baseline in a single county of a public health region **AND** confirmed laboratory cases from that same county within the previous 3 weeks (other counties may be above baseline without lab confirmed cases) **OR** confirmed outbreaks in 2 or more institutions in a single county of a public health region

Regional – At least 2 of 3 parameters above state baseline in at least half of counties of public health region **AND** laboratory confirmed cases from these same counties in past 3 weeks **OR** confirmed outbreaks institutions in at least half of counties of public health region counties

Widespread – Not used for public health region data

Public Health Region Influenza Data



## Laboratory Surveillance

To date, 50 influenza specimens were found to be positive by viral culture. The below chart describes the number and type of influenza by MMWR week and county.

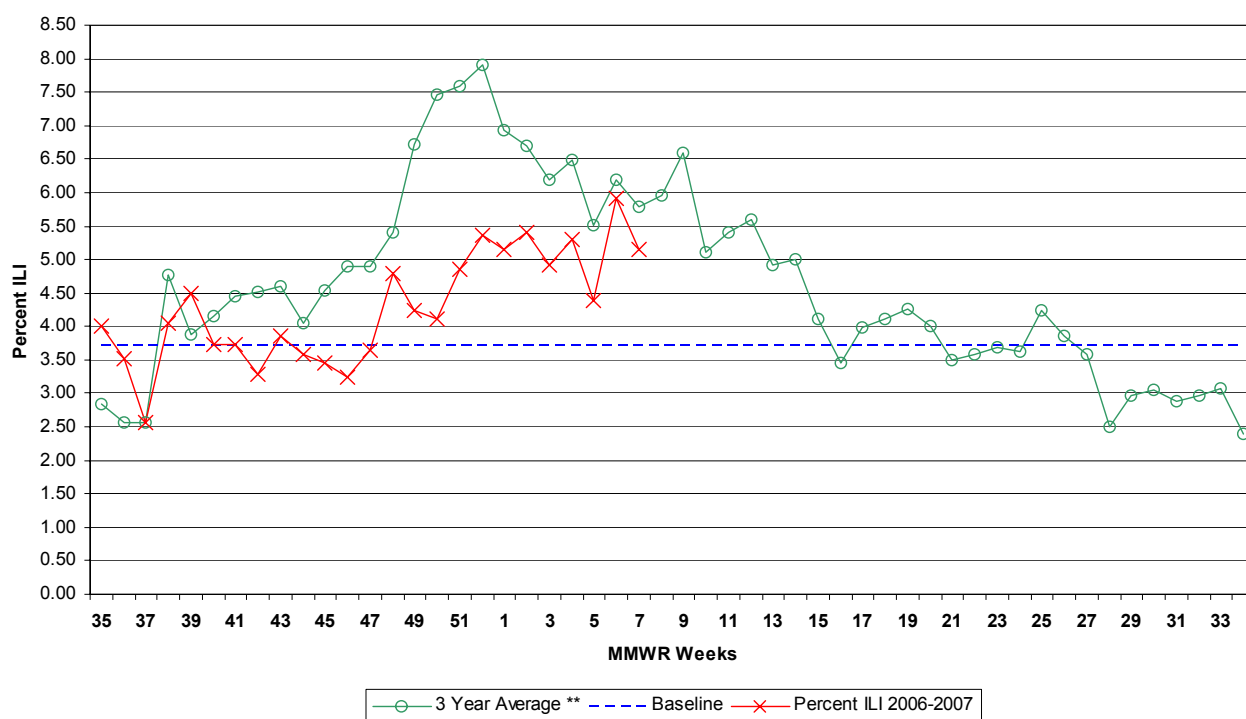
Influenza Type	Number positive	County Data		
		County	# positive	MMWR Week
Influenza A – Not typed	8	Camden	1	50
		Bergen	3	6
		Passaic	2	6
		Sussex	1	6
		Hudson	1	7
Influenza A H1	13	Camden	1	50
		Bergen	1	51
		Morris	1	2
		Essex	2	4
		Middlesex	2	4
		Mercer	1	5
		Monmouth	1	5
		Cape May	1	5
		Monmouth	2	6
		Union	1	6
Influenza A H3	12	Middlesex	1	1
		Essex	1	3
		Hunterdon	1	3
		Monmouth	1	3
		Monmouth	1	4
		Passaic	1	4
		Mercer	1	5
		Sussex	1	5
		Monmouth	1	6
		Mercer	1	7
		Passaic	2	7
Influenza B	17	Somerset	1	1
		Warren	1	1
		Passaic	1	2
		Somerset	1	3
		Monmouth	1	4
		Unknown	1	4
		Monmouth	3	5
		Unknown	2	5
		Bergen	1	6
		Monmouth	2	6
		Morris	1	6
		Warren	1	6
		Morris	1	7
<b>Total</b>	<b>50</b>			

## Influenza-like Illness (ILI) Surveillance\*

### Emergency Departments

During week 7, 5.15% ILI was reported statewide from emergency departments. This is a decrease over the previous week (5.66%). The percent ILI for each county ranged from 0.98 to 17.91%. The percent ILI for this same week last year was 5.92% in emergency departments. The percent ILI for the northwest (4.38%), northeast (5.06%), central west (8.82%), central east (6.01%) and south (3.74%) public health regions were above state baseline (3.71%).

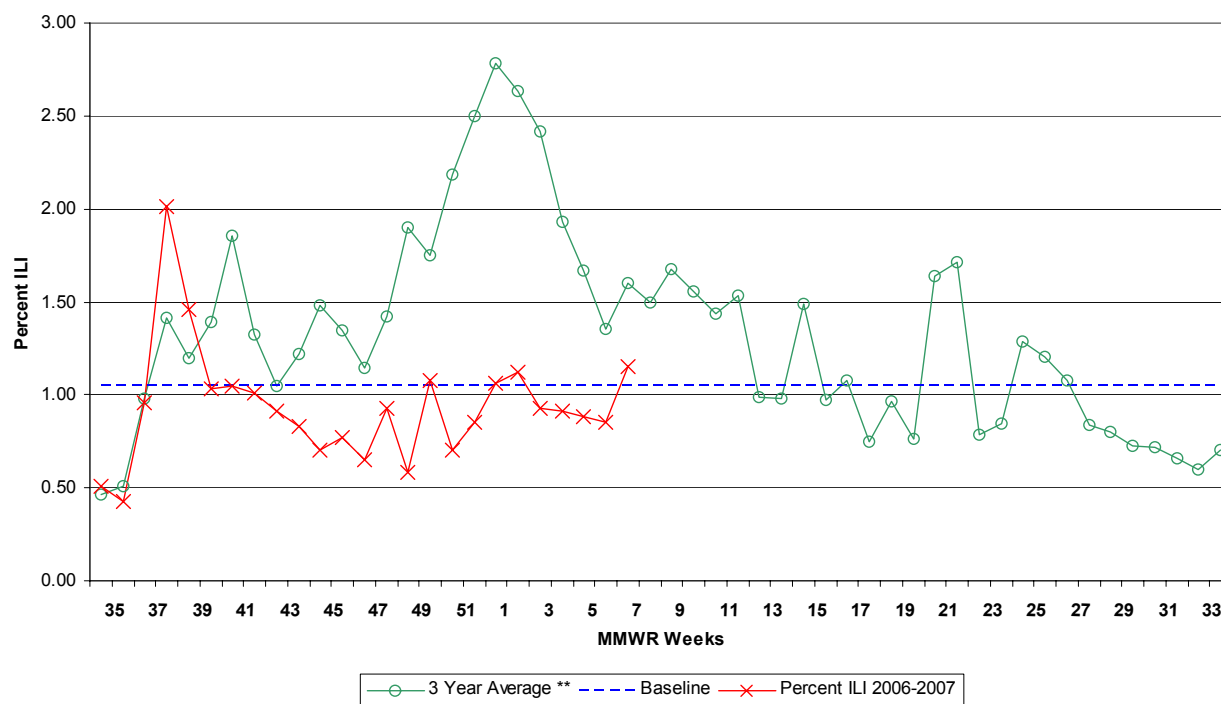
#### New Jersey Department of Health and Senior Services Influenza-like Activity - Emergency Departments



## Long-term Care Facilities

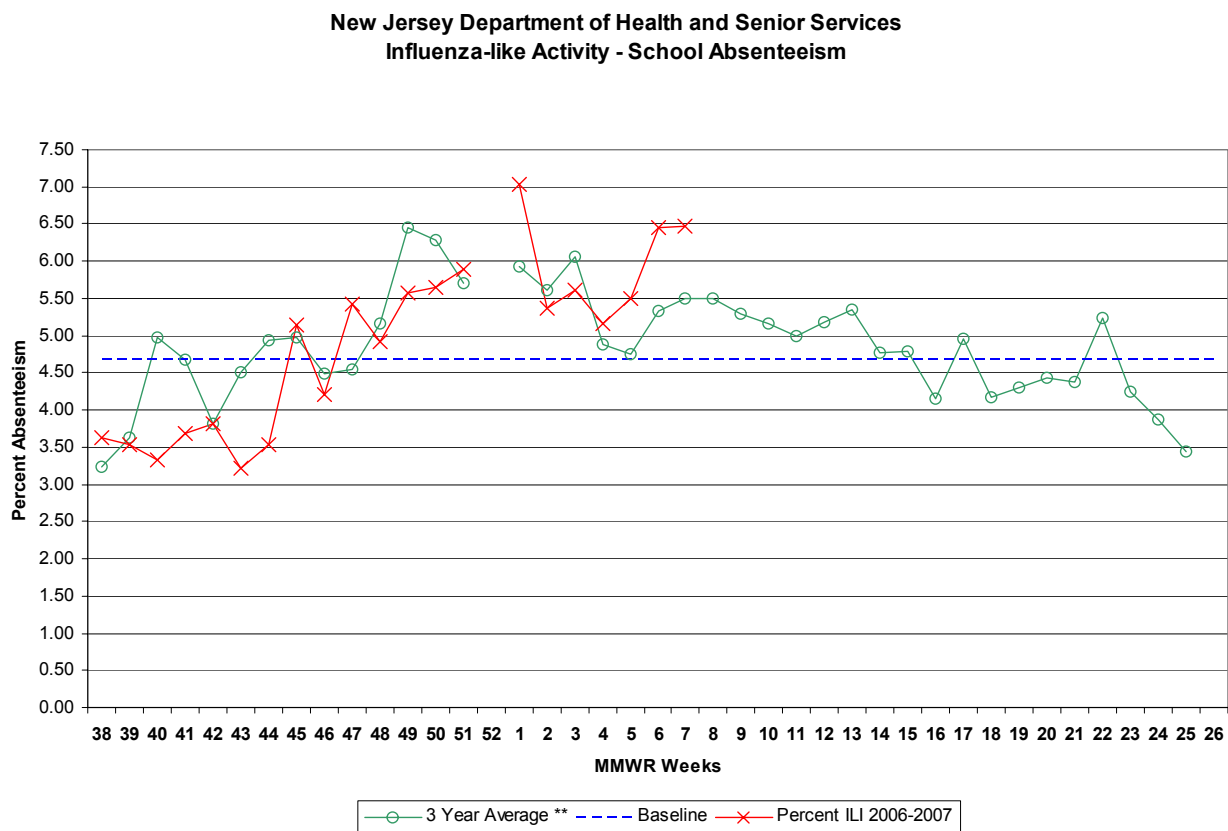
During week 7, 1.15% ILI was reported statewide from long term care facilities. This is an increase over the previous week (0.85%). The percent ILI for each county ranged from 0.00% to 4.02%. No reports regarding ILI/respiratory outbreaks in communal living facilities were received in week 7. The percent ILI for this same week last year was 1.51% in long-term care facilities. The percent ILI for the south (1.72%) public health region was above state baseline (1.05%).

**New Jersey Department of Health and Senior Services  
Influenza-like Activity - Long Term Care Facilities**



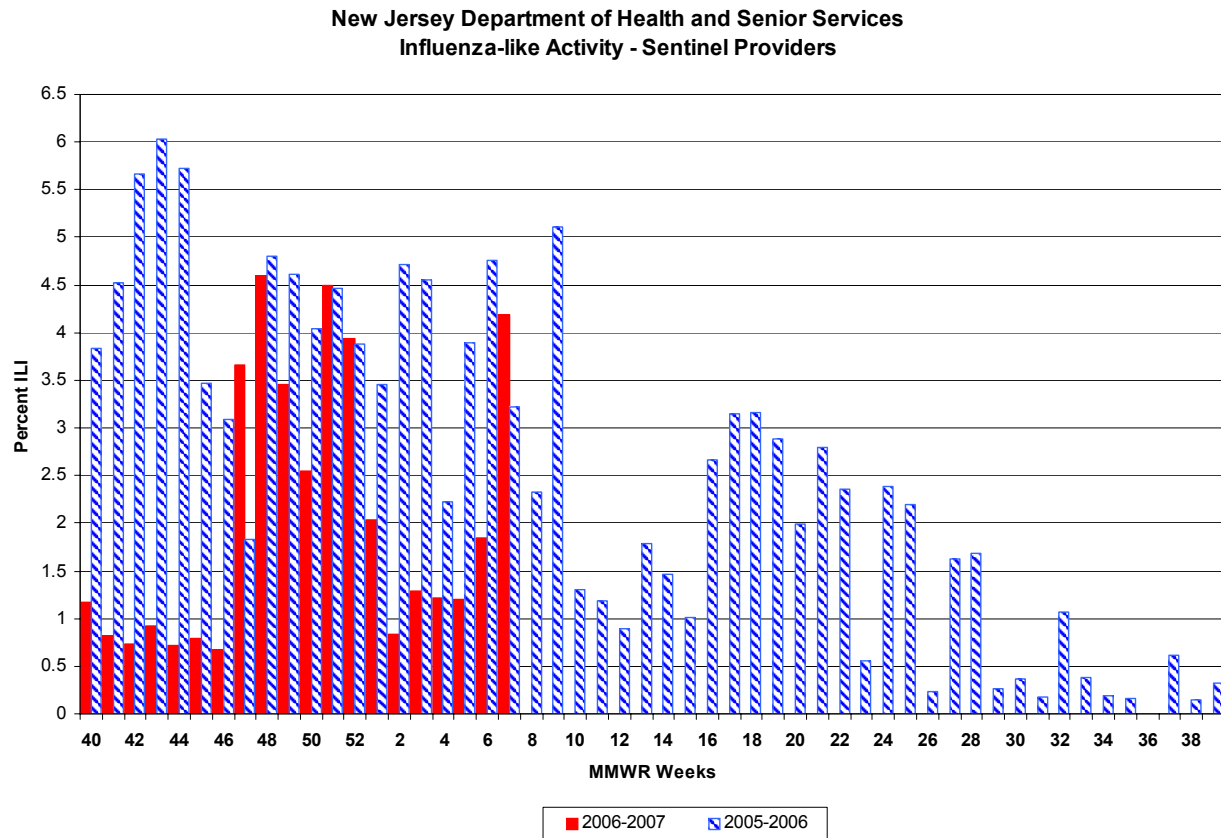
## School Absenteeism

During week 7, schools reported 6.48% absenteeism. This is a slight increase over the previous week (6.46%). The percent ILI for each county ranged from 2.68 - 10.38%. The percent absent for this same week last year was 5.53%. The percent ILI for the northwest (6.58%), the northeast (7.27%), the central east (6.73%) and the south (6.77%) public health regions were above state baseline (4.68%).



## **Sentinel Provider Surveillance**

During week 7, 4.18% of sentinel provider patient visits were due to ILI. These data reflect reports from four (9%) of the enrolled sentinel providers.



## **Pediatric Influenza Surveillance**

To date, NJDHSS has received 34 reports of pediatric illness. To date, four cases have met the case definition for pediatric illness or death associated with influenza.

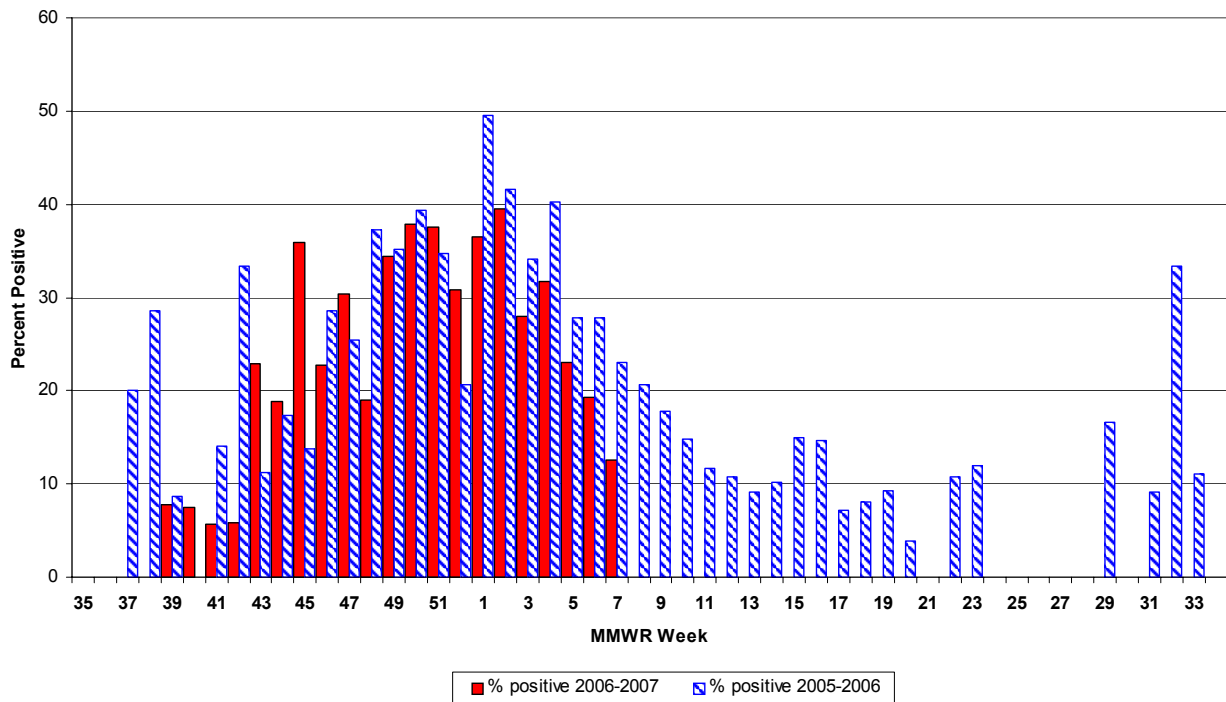
## **122 City Mortality Report**

At the time of this report no new data available for week 6.

## **RSV Reports**

During week 7, 12.56% of all RSV samples tested were positive. This was a decrease over the previous week 19.33%. The percent of samples positive RSV for this same week last year was 23.08%.

**New Jersey Department of Health and Senior Services  
Respiratory Syncytial Virus (RSV) Surveillance by Week**



## **Additional Information**

For additional information regarding influenza surveillance please visit the following websites.

<http://nj.gov/health/flu/surveillance.shtml>

<http://www.cdc.gov/flu/>

\* Baseline is calculated by taking the average of statewide percentages of ILI for a 3 year (2004, 2005, 2006) period during months when influenza is less likely to be circulating (May-August). Weeks in which less than 4 counties reported were not included in the calculation.

\*\*Three year average is an average of the 2003-2004, 2004-2005, and 2005-2006 influenza seasons.





	Long Term Care			Schools			Hospital Emergency Department			RSV Tests	
County	# Enrolled	# Reports Rec'd	% ILI	# Enrolled	# Reports Rec'd	% Absent	# Enrolled	# Reports Rec'd	% ILI	# Positive	Total Tests Performed
ATLANTIC	5	1	4.02	16	15	7.05	4	4	0.98	9	26
BERGEN	3	0	0.00	11	0	0.00	6	0	0.00	0	0
BURLINGTON	6	1	0.00	103	59	6.47	3	3	3.38	4	37
CAMDEN	7	3	0.85	17	5	6.56	7	6	2.34	0	0
CAPE MAY	4	3	2.65	11	9	6.88	1	1	13.04	0	0
CUMBERLAND	4	2	1.17	18	7	8.81	3	3	9.44	0	8
ESSEX	14	5	0.93	31	6	10.38	11	9	5.37	8	65
GLOUCESTER	2	2	2.19	4	1	2.68	2	2	3.56	0	0
HUDSON	10	1	1.18	75	41	6.76	7	1	1.23	2	15
HUNTERDON	4	4	0.45	8	8	4.13	1	1	1.45	6	8
MERCER	10	4	1.17	12	10	3.51	5	3	4.38	5	20
MIDDLESEX	2	0	0.00	16	4	5.82	5	1	9.40	3	34
MONMOUTH	5	2	1.32	24	12	9.14	5	5	3.41	1	29
MORRIS	11	2	0.00	14	8	3.59	4	4	2.84	4	15
OCEAN	6	2	0.00	24	13	8.95	4	4	5.79	0	0
PASSAIC	8	3	1.86	22	5	4.71	6	1	6.72	0	0
SALEM	4	2	0.98	5	0	0.00	1	1	1.69	0	0
SOMERSET	5	1	2.29	53	18	4.92	2	2	17.91	0	0
SUSSEX	5	4	0.29	18	18	7.58	2	2	3.13	2	10
UNION	4	1	0.00	80	40	5.69	5	4	9.05	5	125
UNKNOWN	0	0	0.00	0	0	0.00	0	0	0.00	0	0
WARREN	7	5	1.61	21	18	6.49	2	2	6.11	1	6
<b>NW Region</b>	31	14	1.03	75	49	6.58	14	9	4.38	7	31
<b>NE Region</b>	27	6	0.97	117	47	7.27	24	10	5.06	10	80
<b>CW Region</b>	19	9	1.00	73	36	4.34	8	6	8.82	11	28
<b>CE Region</b>	17	5	0.59	144	69	6.73	19	14	6.01	9	188
<b>South Region</b>	32	14	1.72	174	96	6.77	21	20	3.74	13	71
<b>State Total</b>	<b>126</b>	<b>48</b>	<b>1.15</b>	<b>583</b>	<b>297</b>	<b>6.48</b>	<b>86</b>	<b>59</b>	<b>5.15</b>	<b>50</b>	<b>398</b>