




Respiratory Virus Surveillance Report¹

New Jersey Department of Health
Communicable Disease Service



Week ending December 21, 2013 (MMWR week 51)

SYNOPSIS

Influenza Activity Level ²		
State Activity Week ending 12/21: MODERATE		
Current week Last year: HIGH		
Regional ³ Data		
Northwest		MODERATE
Northeast		HIGH
Central West		MODERATE
Central East		LOW
South	LOW	

ILI Activity ⁴				
	Percent ILI/Absenteeism			Baselines
	Current week (range by county)	Last week Current year	Current week Last year	Non-season ⁵ Season ⁶ (3 low, 3 high)
Long Term Care Facilities	0.39 (0.00, 1.01)	0.51	0.55	0.59 (0.62, 0.87)
Schools (absenteeism)	5.77 (3.75, 13.85)	7.87	5.56	3.79 (4.70, 4.90)
Emergency Departments	3.88 (0.00, 7.41)	3.55	4.87	2.49 (3.28, 4.31)

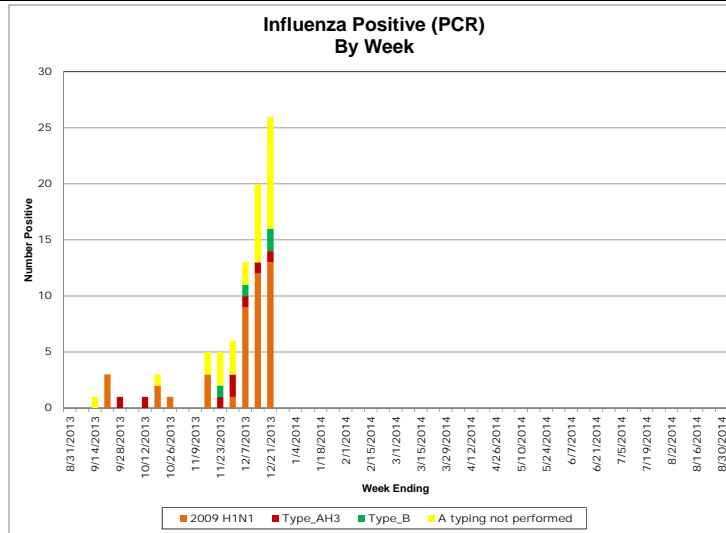
Viral Activity ⁷			
	Current Week	Past 3 Weeks	Cumulative Total
Influenza H1N1 (2009)	13	34	41
Influenza H3N2	1	3	7
Influenza B	2	3	4
Respiratory Syncytial Virus (RSV)	114	327	573
Rapid Influenza Tests	23	53	86

ILINet Providers			
Current Week		Previous Week	
#of reporters	%ILI	#of reporters	%ILI
17	2.00	22	1.26

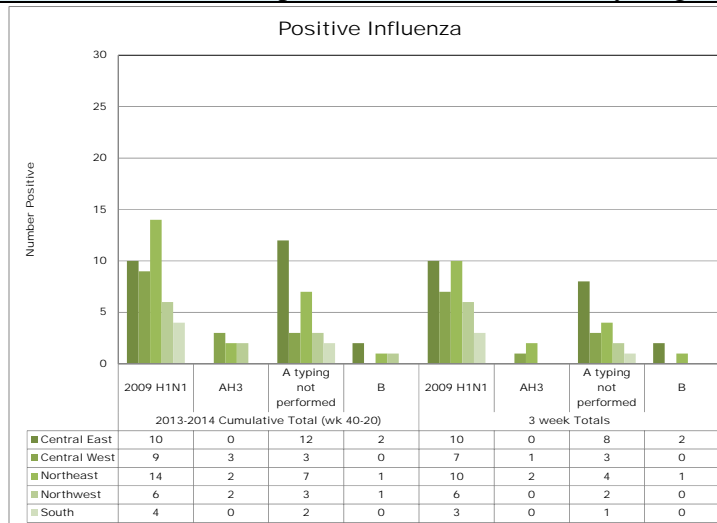
Report also available at: <http://nj.gov/health/flu/fluinfo.shtml>

Virologic Surveillance⁷

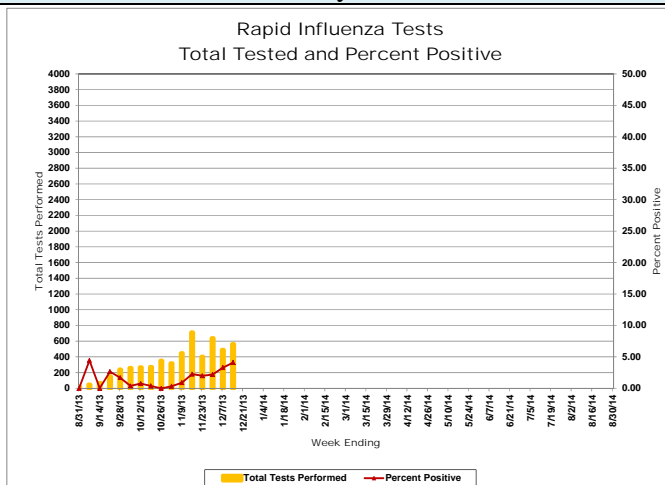
Influenza Positive Specimens (PCR) - Result by Week



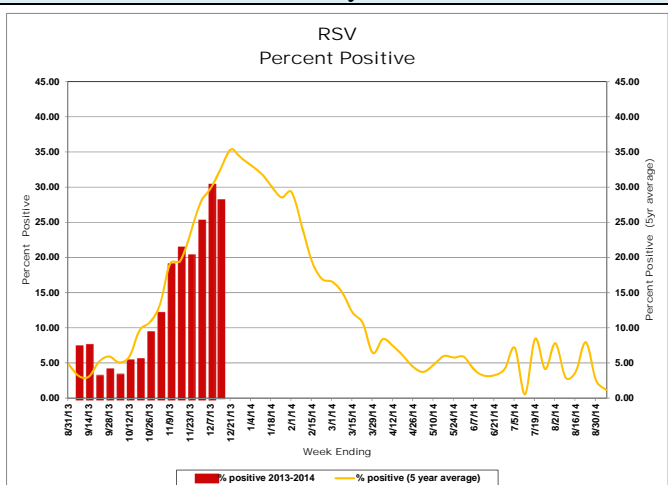
Influenza Positive Specimens (PCR)- Result by Region³



Influenza Rapid Antigen Result by Week



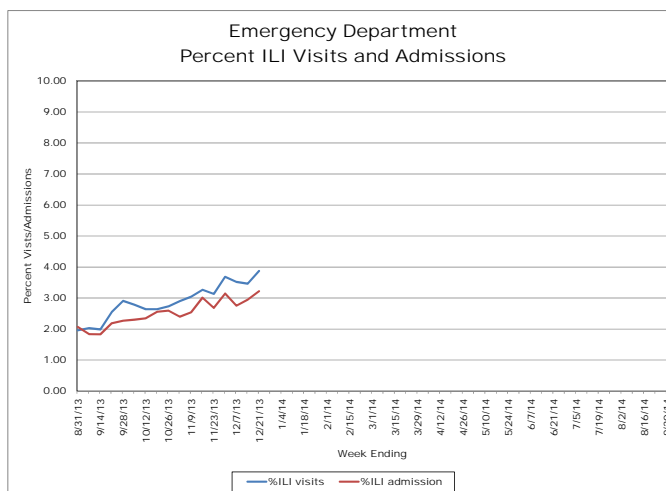
Respiratory Syncytial Virus (RSV) Results by Week



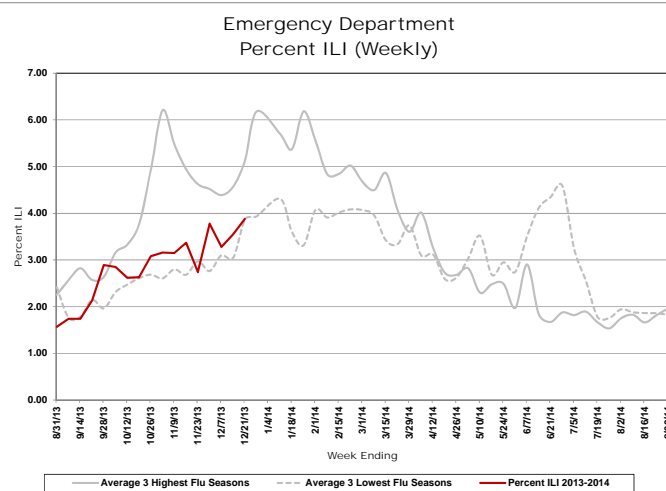
Influenza-like Illness Surveillance

Emergency Department⁸

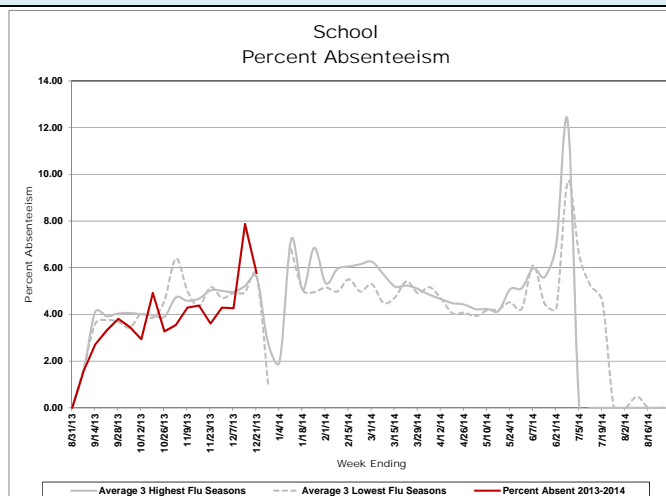
Daily Visits and Admission



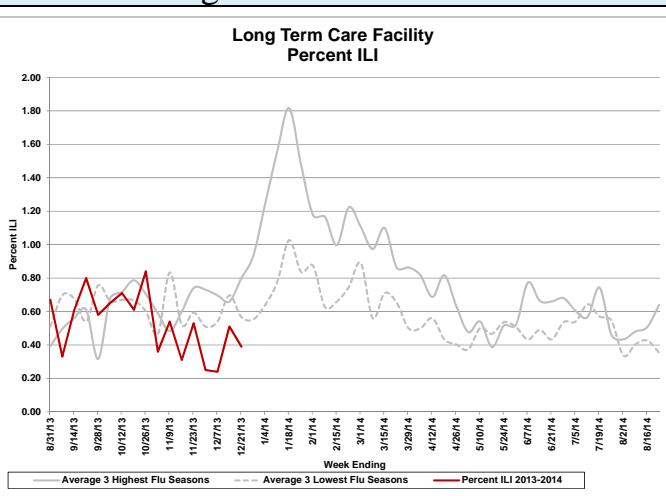
Visits – Tuesday Only



School Absenteeism



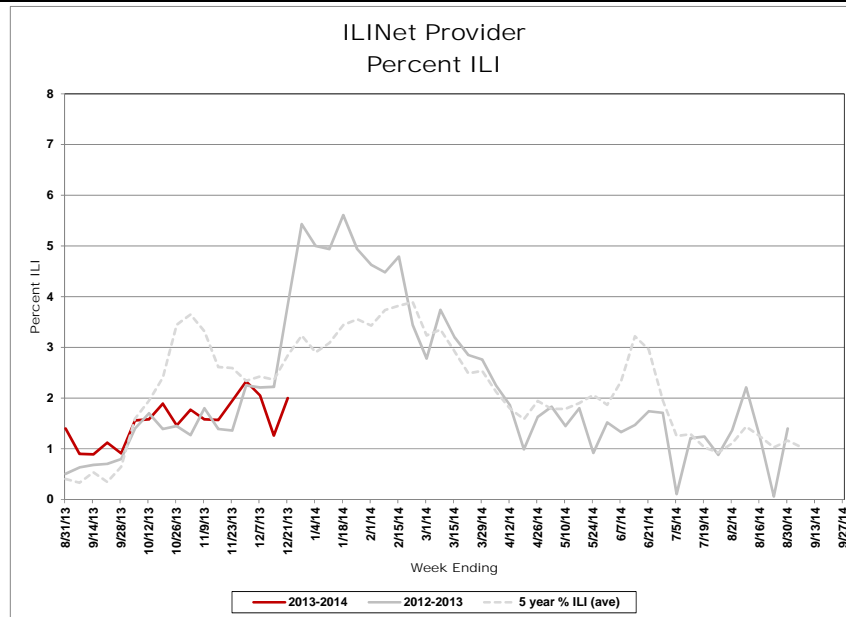
Long Term Care Facilities



Respiratory Outbreaks in Long Term Care Facilities⁹

Cumulative outbreaks 2012-2013 season	0
No. outbreaks last 3 weeks	0
Regions with recent outbreaks	n/a

ILINet Providers



For additional information regarding influenza surveillance please visit the following websites.

<http://nj.gov/health/flu/surveillance.shtml>

<http://www.cdc.gov/flu/>

Footnotes:

1. This report represents activity occurring in New Jersey related to influenza and RSV. In addition, reports of other circulating respiratory viruses or regarding illness severity (i.e., hospitalization) will be included when available.
2. Activity levels for the state and region are defined in Table 1 and 2 at the end of this document.
3. The following is a breakdown of counties contained within each public health region: Northwest: Morris, Passaic, Sussex, Warren; Northeast: Bergen, Essex, Hudson; Central west: Hunterdon, Mercer, Somerset; Central East: Middlesex, Monmouth, Ocean, Union; South: Atlantic, Burlington, Camden, Cape May, Salem, Cumberland, Gloucester
4. Influenza-like illness (ILI) is defined as fever ($> 100^{\circ}\text{F}$ [37.8°C], oral or equivalent) and cough and/or sore throat (in the absence of a known cause other than influenza). For long term care facilities, fever is defined as 2° above baseline temperature.
5. Non-season baseline is calculated by taking the average of statewide percentages of ILI for an 8 year (2006, 2007, 2008, 2009, 2010, 2011, 2012, and 2013) period during months when influenza is less likely to be circulating (May-August).
6. Three year seasonal averages are determined by calculating the average percent ILI/absenteeism for each influenza season (October to May). These averages are ranked and the three highest and lowest overall season averages were selected. The three highest and lowest numbers were then averaged to obtain a single high and single low value. The season which contribute to the high and low value vary by entity type and are as follows : LTCF (High: 07-08, 08-09, 12-13; Low: 09-10, 10-11, 11-12), ED (High: 07-08, 09-10, 12-13; Low: 08-09, 10-11, 11-12) and schools (High: 07-08, 08-09, 10-11; Low: 09-10, 11-12, 12-13). A week by week average was also calculated using the average of the seasons listed above for each entity type.
7. Viral activity: Real-time polymerase chain reaction (PCR) results are obtained from electronic laboratory transmission submitted by acute care, commercial and public health laboratories to CDRSS. Rapid influenza test data and respiratory syncytial virus data are acquired from facilities reporting rapid influenza tests via the National Respiratory and Enteric Virus Surveillance System (NREVSS) or CDRSS ILI module. Counts for cumulative totals begin with week ending October 5, 2013. Three week count data includes current week and two prior weeks. Data presented for RSV and rapid influenza testing represent information for the week prior to the current report week.
8. Daily visits and admissions associated with ILI from emergency department data is collected via EpiCenter and Hippocrates. Prior to these systems, data on ILI visits were only recorded one day per week usually on Tuesday. This system is maintained as a large amount of historical data allows for better seasonal comparisons.
9. Only LTCF outbreaks reported to NJDOH that receive an outbreak number are recorded in this report.

Table 1 Influenza Activity Level – Definitions for State Activity				
<u>NJ Level</u>	<u>CSTE Level</u>	<u>Definition</u>		
		<u>ILI Activity/Outbreaks</u>		<u>Lab Activity</u>
Low	No Activity	ILI activity at or below baseline AND no detected outbreaks	AND	No lab confirmed cases
	Sporadic	Low ILI activity detected OR one lab confirmed outbreaks anywhere in the state	AND	Sporadic isolation of laboratory confirmed influenza
Moderate	Local	Increase in ILI activity OR two or more lab confirmed outbreaks in one public health region (Other regions not experiencing increased ILI activity)	AND	Recent (within 3 weeks) laboratory activity in the region with increased ILI
	Regional	Increase in ILI activity OR two or more lab confirmed outbreaks in at least 2 public health regions (Other regions not experiencing increased ILI activity)	AND	Recent (within 3 weeks) laboratory activity in the region with increased ILI
High	Widespread	Increase in ILI activity OR two or more lab confirmed outbreaks in > 2 public health regions	AND	Recent (within 3 weeks) laboratory activity in the region with increased ILI

Table 2 Influenza Activity Level – Definitions for Public Health Regions			
<u>NJ Level</u>	<u>Definition</u>		
	<u>ILI Activity/Outbreaks</u>		<u>Lab Activity</u>
Low	Low ILI activity detected OR one lab confirmed outbreaks anywhere in the region	AND	Sporadic isolation of laboratory confirmed influenza anywhere in the region
Moderate	Increased ILI activity in less than half of the counties in the region OR two lab confirmed outbreaks in the public health region	AND	Recent (within 3 weeks) laboratory activity in same counties of the region with increased ILI
High	Increased ILI activity in more than half of the counties in the region OR three or more lab confirmed outbreaks in the region	AND	Recent (within 3 weeks) laboratory activity in more than half of the counties in the region with increased ILI

Notes:

ILI activity: Systems used to detect increases in ILI activity include: ILINet (i.e., sentinel providers), school absenteeism data, ED ILI visits and admissions collected via Hippocrates and EpiCenter systems, LTCF ILI data, LTCF outbreak data, and information on influenza mortality (122 city, influenza associated death report).

Lab Activity: Virologic surveillance data from PHEL and commercial laboratories will be used as the primary data source for the above levels. However, rapid influenza test data will also be considered when determining the appropriate activity levels.

SURVEILLANCE DATE: 12/17/2013

COUNTY	Long Term Care			Schools			Hospital Emergency Dept		
	# Enrolled	# Reports Rec'd	% ILI	# Enrolled	# Reports Rec'd	% Absent	# Enrolled	# Reports Rec'd	% ILI
December 17, 2013 MMRW WEEK 51									
ATLANTIC	7	3	0.46 %	68	27	6.13 %	4	3	1.47 %
BERGEN	6	0	0 %	124	9	5.08 %	5	5	5.26 %
BURLINGTON	6	0	0 %	115	47	4.36 %	3	3	2.81 %
CAMDEN	5	0	0 %	17	0	0 %	7	7	5.73 %
CAPE MAY	7	2	0 %	11	8	6.8 %	1	1	2.3 %
CUMBERLAND	2	1	0.56 %	24	14	6.37 %	3	0	0 %
ESSEX	13	2	0 %	27	6	6.27 %	8	8	3.26 %
GLOUCESTER	4	1	0 %	6	4	4.26 %	2	1	4.09 %
HUDSON	16	4	0.39 %	91	22	7.58 %	6	6	3.97 %
HUNTERDON	4	4	0.45 %	8	8	3.75 %	1	1	1.33 %
MERCER	10	1	0 %	28	18	5.52 %	5	5	4.37 %
MIDDLESEX	20	0	0 %	35	0	0 %	6	6	5.06 %
MONMOUTH	15	0	0 %	26	0	0 %	5	5	4.25 %
MORRIS	4	0	0 %	5	0	0 %	4	2	1.18 %
OCEAN	23	0	0 %	24	0	0 %	4	4	1.92 %
PASSAIC	14	4	0.58 %	68	10	9.55 %	3	3	6.49 %
SALEM	1	0	0 %	10	4	6.14 %	1	1	7.41 %
SOMERSET	7	2	1.01 %	92	20	4.93 %	1	0	0 %
SUSSEX	6	2	0.36 %	24	0	0 %	2	1	0 %
UNION	4	0	0 %	197	26	5.6 %	5	5	1.81 %
WARREN	4	3	0 %	27	3	13.85 %	2	2	5 %
NW Region	28	9	0.39 %	124	13	9.86 %	11	8	4.11 %
NE Region	35	6	0.27 %	242	37	6.94 %	19	19	4.01 %
CW Region	21	7	0.67 %	128	46	4.95 %	7	6	3.99 %
CE Region	62	0	0.00 %	282	26	5.60 %	20	20	3.59 %
South Region	32	7	0.30 %	251	104	5.33 %	21	16	4.17 %
State Total	178	29	0.39 %	1027	226	5.77 %	78	69	3.93 %

NJ ACTIVE INFLUENZA-LIKE ILLNESS SURVEILLANCE STATISTICS

SURVEILLANCE DATE: 12/17/2013



County	RSV Tests		Flu Tests		
	# Positive	Total Tests Performed	# Positive	Total Tests Performed	
December 17, 2013 MMRW WEEK 51					
ATLANTIC	8	39	1	48	
BERGEN	2	6	8	87	
BURLINGTON	0	0	0	0	
CAMDEN	0	0	0	0	
CAPE MAY	2	4	0	7	
CUMBERLAND	0	0	0	0	
ESSEX	25	101	3	130	
GLOUCESTER	10	26	0	44	
HUDSON	25	82	3	37	
HUNTERDON	2	10	1	31	
MERCER	0	0	0	0	
MIDDLESEX	24	80	0	0	
MONMOUTH	0	0	0	0	
MORRIS	5	15	1	24	
OCEAN	0	0	0	0	
PASSAIC	0	0	0	0	
SALEM	0	0	0	0	
SOMERSET	0	0	0	0	
SUSSEX	1	7	1	15	
UNION	10	36	5	109	
WARREN	0	3	0	29	
NW Region	6	25	2	68	
NE Region	52	189	14	254	
CW Region	2	10	1	31	
CE Region	34	116	5	109	
South Region	20	69	1	99	
State Total	114	409	23	561	