

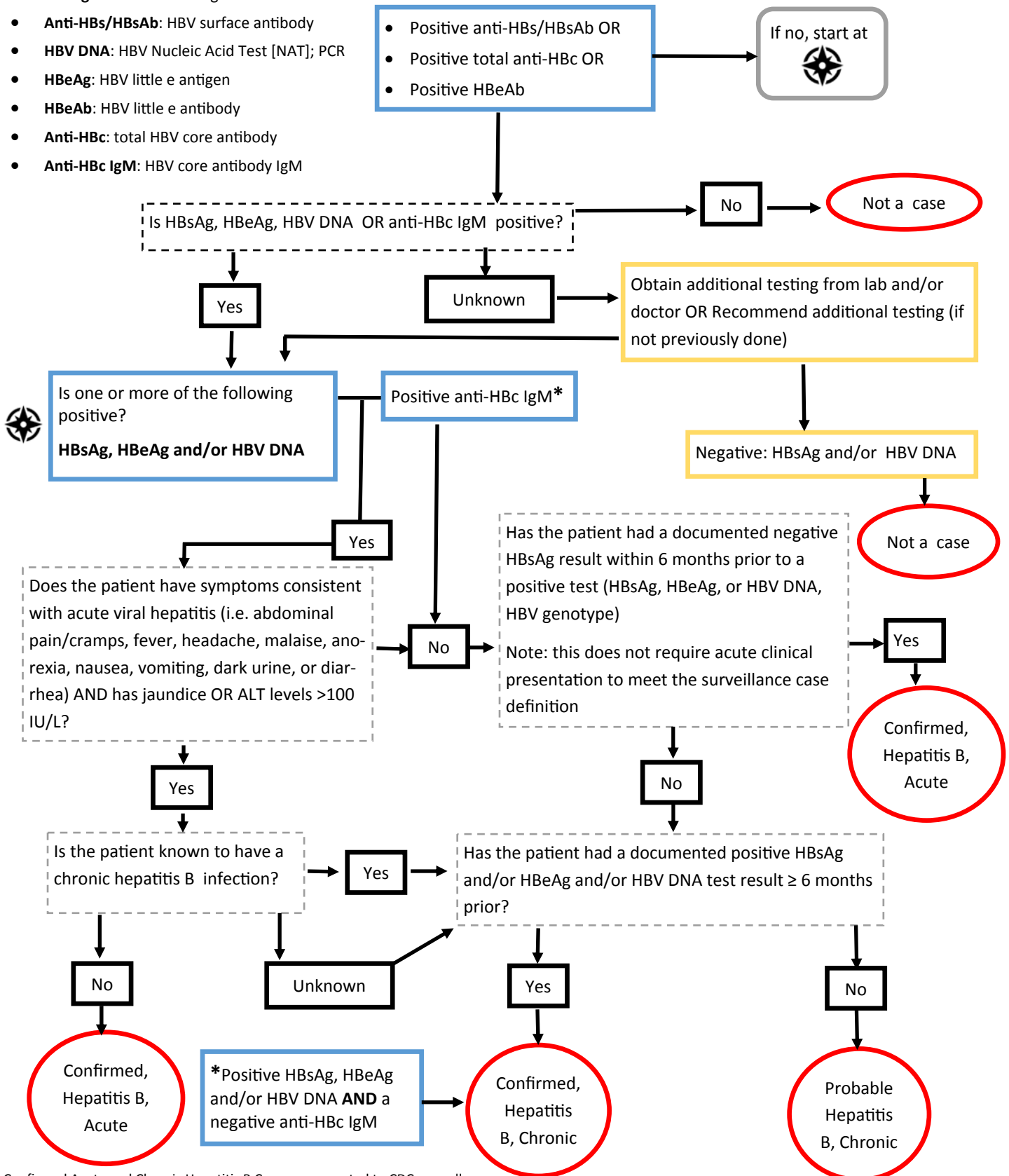
****Please be advised: effective January 2024, a new case definition will be utilized. Guidance documents will be updated to reflect changes.****



Hepatitis B Case Classification Algorithm

HBV abbreviations:

- **HBsAg:** HBV surface antigen
- **Anti-HBs/HBsAb:** HBV surface antibody
- **HBV DNA:** HBV Nucleic Acid Test [NAT]; PCR
- **HBeAg:** HBV little e antigen
- **HBeAb:** HBV little e antibody
- **Anti-HBc:** total HBV core antibody
- **Anti-HBc IgM:** HBV core antibody IgM



Confirmed Acute and Chronic Hepatitis B Cases are reported to CDC annually

Revised September 2018 based on CSTE case definitions: <https://www.cdc.gov/nndss/case-definitions.html>