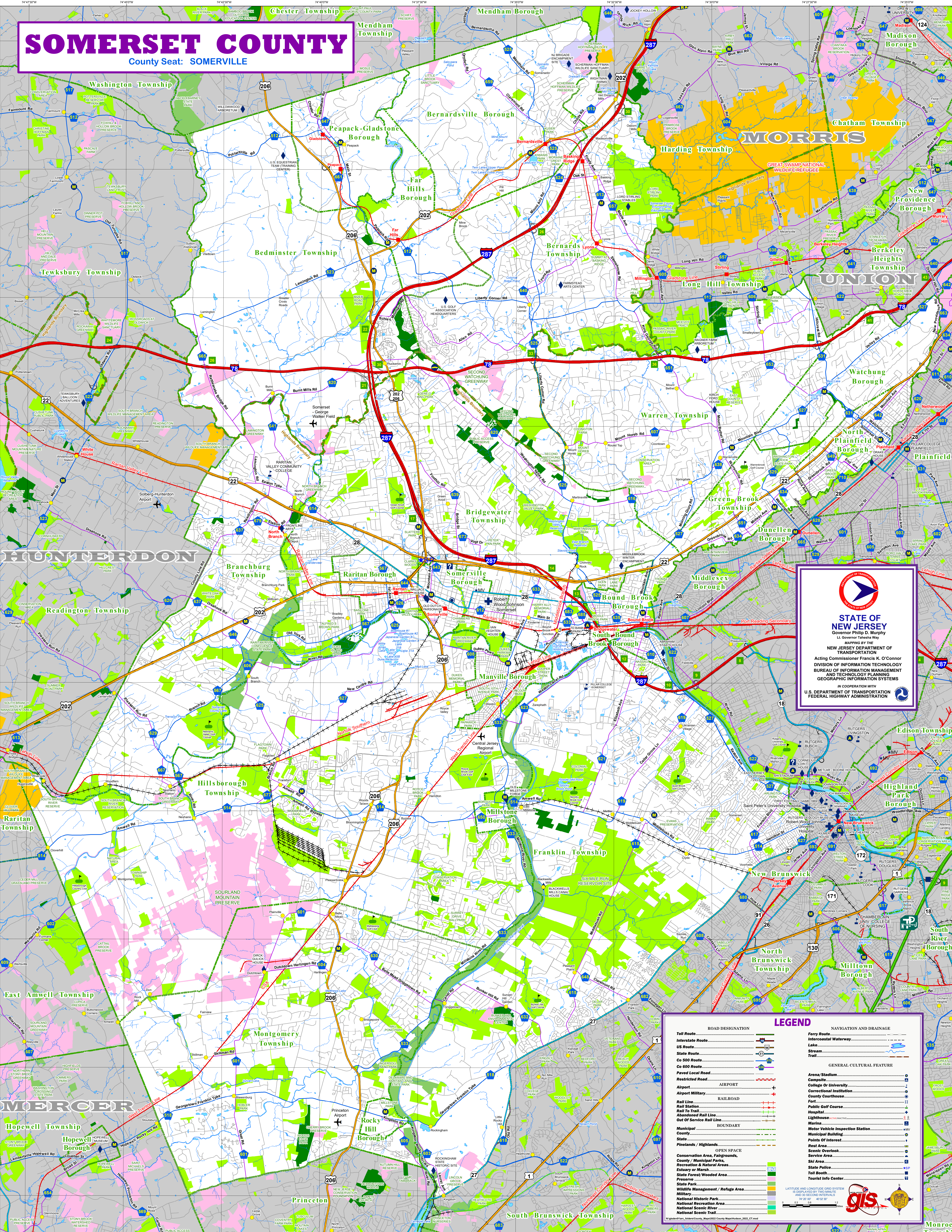
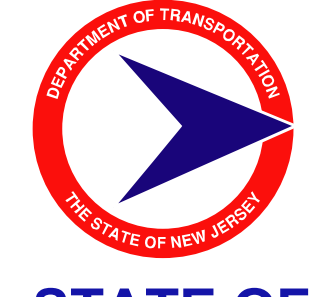


# SOMERSET COUNTY

County Seat: SOMERVILLE



  
**STATE OF NEW JERSEY**  
 Governor Philip D. Murphy  
 Lt. Governor Tashia Way  
 MAPPING BY THE  
 NEW JERSEY DEPARTMENT OF  
 TRANSPORTATION  
 Acting Commissioner Francis K. O'Connor  
 DIVISION OF INFORMATION TECHNOLOGY  
 BUREAU OF INFORMATION MANAGEMENT  
 AND TECHNOLOGY PLANNING  
 GEOGRAPHIC INFORMATION SYSTEMS  
 IN COOPERATION WITH  
 U.S. DEPARTMENT OF TRANSPORTATION  
 FEDERAL HIGHWAY ADMINISTRATION

### LEGEND

ROAD DESIGNATION		NAVIGATION AND DRAINAGE	
Toll Route		Ferry Route	
Interstate Route		Intercoastal Waterway	
US Route		Lake	
State Route		Trail	
Co 500 Route		GENERAL CULTURAL FEATURE	
Co 600 Route		Area/Stadium	
Restricted Road		Campus	
Airport		College Or University	
Airport Military		Correctional Institution	
Rail Line		County Courthouse	
Rail To Station		Fort	
Rail To Trail		Public Golf Course	
Out Of Service Rail Line		Hospital	
Municipal BOUNDARY		Lighthouse	
County BOUNDARY		Motor Vehicle Inspection Station	
State BOUNDARY		Points Of Interest	
Pinelands / Highlands		Rest Area	
Conservation Area, Fairgrounds, County / Municipal Parks, Recreation & Natural Areas, Estuary or Marsh, State Forest/Wooded Area, State Park		Scenic Overlook	
Wildlife Management / Refuge Area		Service Area	
National Historic Park		Ski Area	
National Recreation Area		State Police	
National Scenic River		Toll Booth	
National Scenic Trail		Traffic Info Center	

LATTITUDE AND LONGITUDE GRID SYSTEM IS DISPLAYED BY TENS OF MINUTES AND 30 SECOND INTERVALS  
 40° 00' 00" N 74° 30' 00" W

  
 gis