



**Slide 1**



# Brodhecker Farm Farmstead

Slide 2

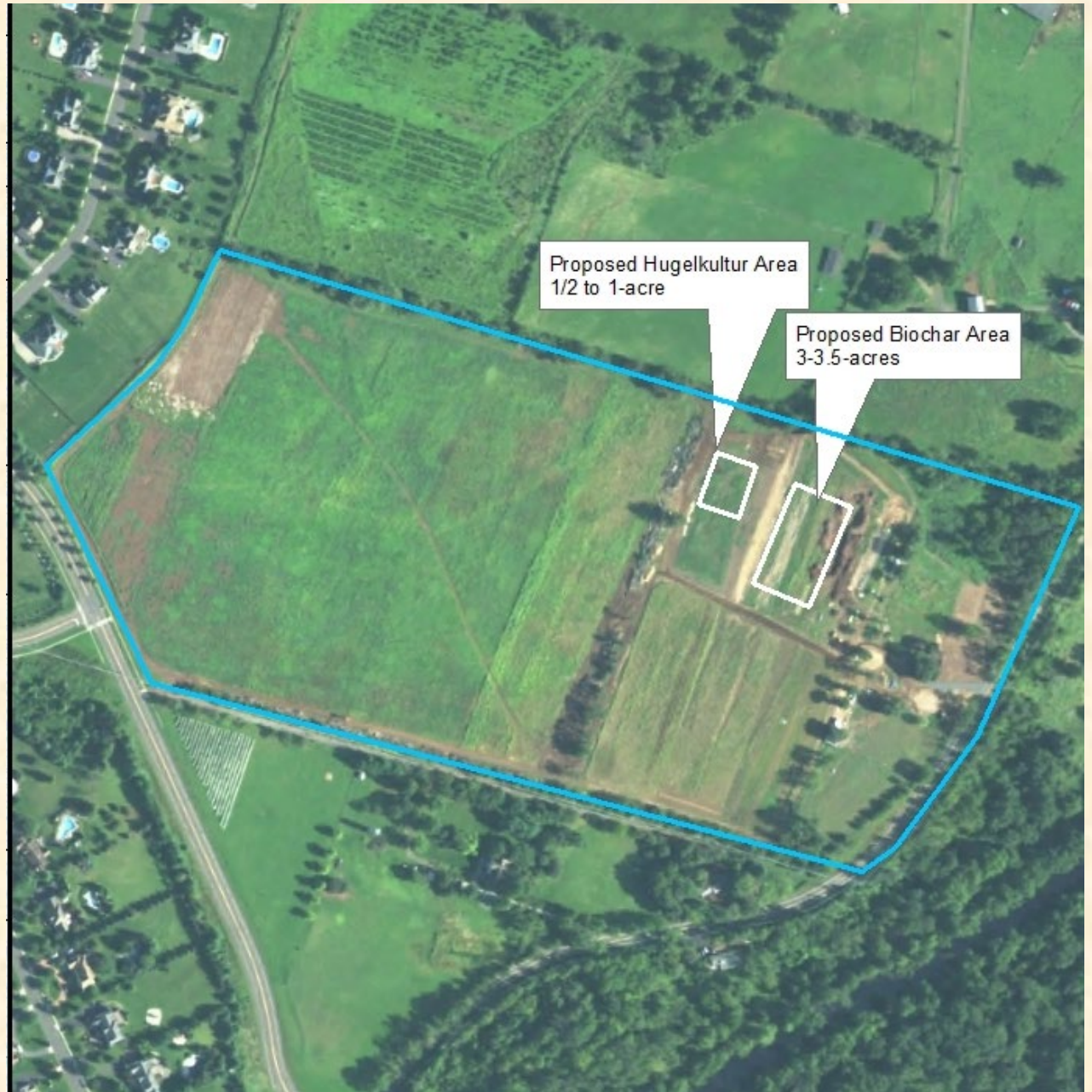




Review of Activities  
**Hugelculture & Biochar**

**Naturally Nurturing , LLC**  
**Block 205.11, Lot 48.05**

**49.6 Acres in Hillsborough**  
**Township, Somerset County**







Slide 4





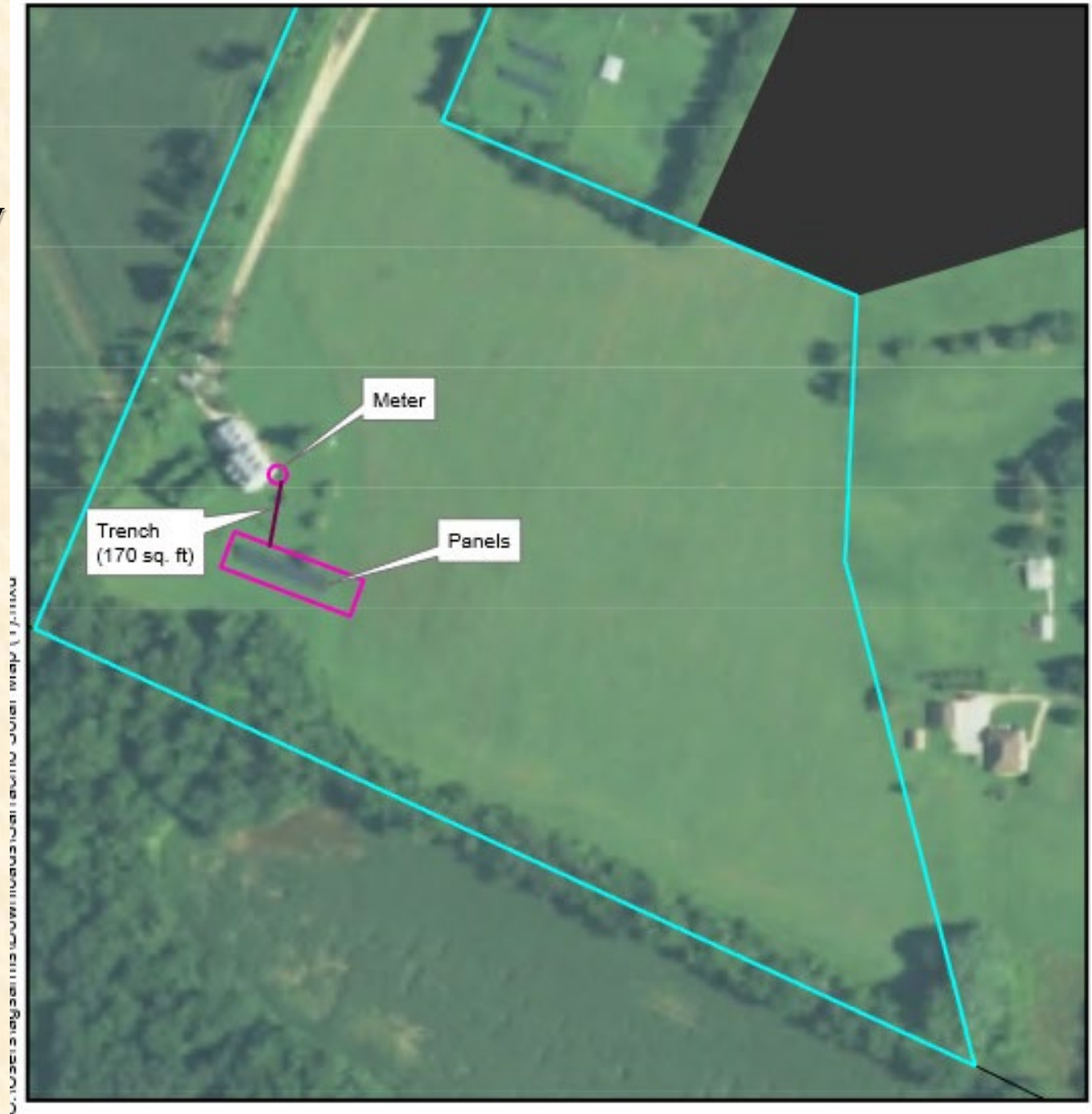




**Slide 6**



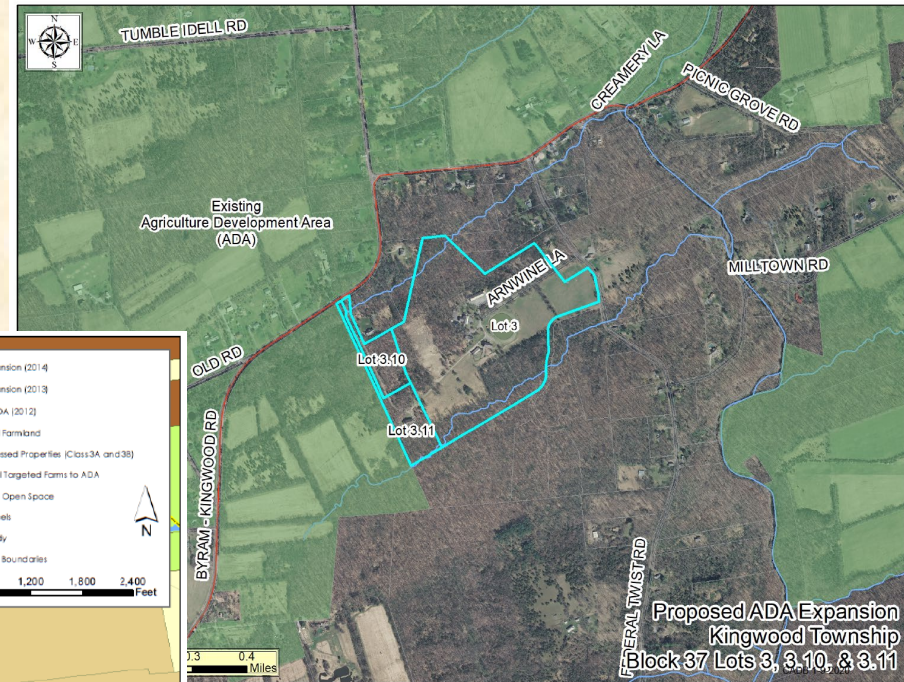
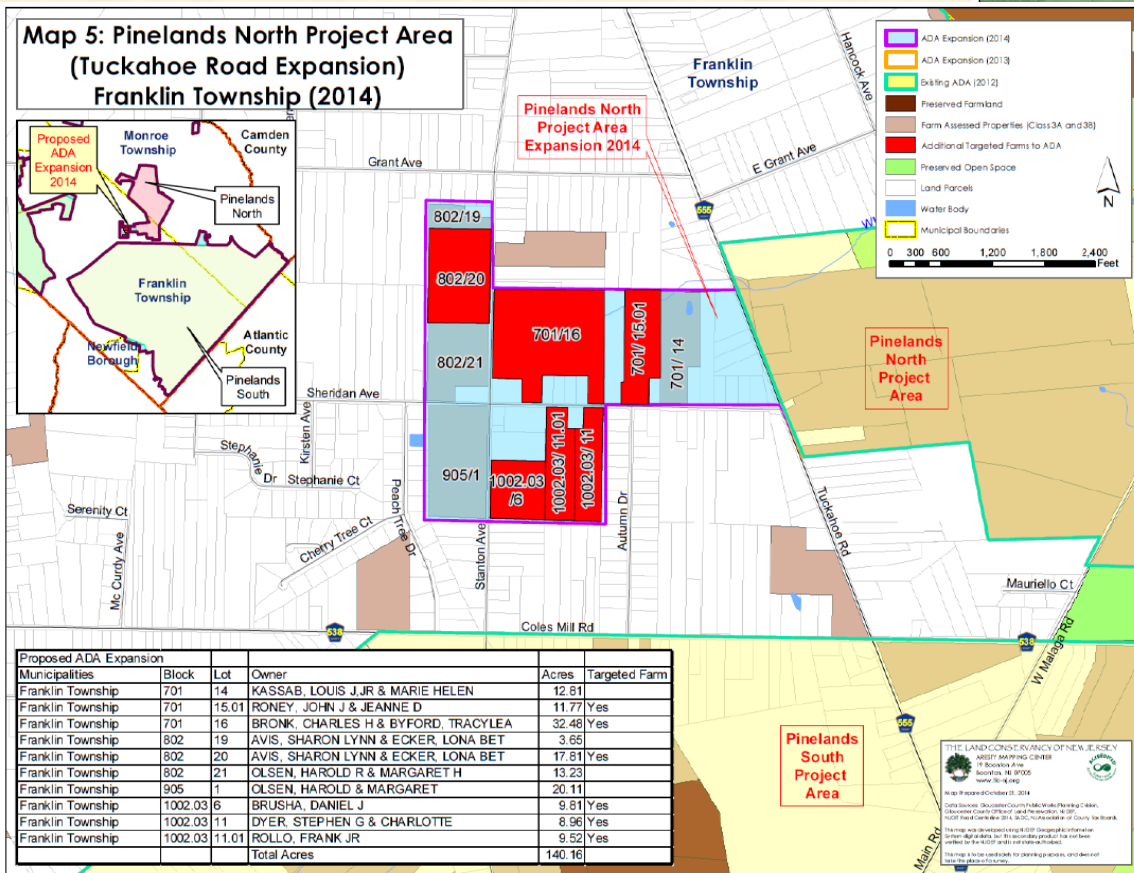
**Renewable Energy**  
**Generation Systems**  
**Solar: Sarracino Farm**  
**Upper Pittsgrove**  
**Township, Salem County**





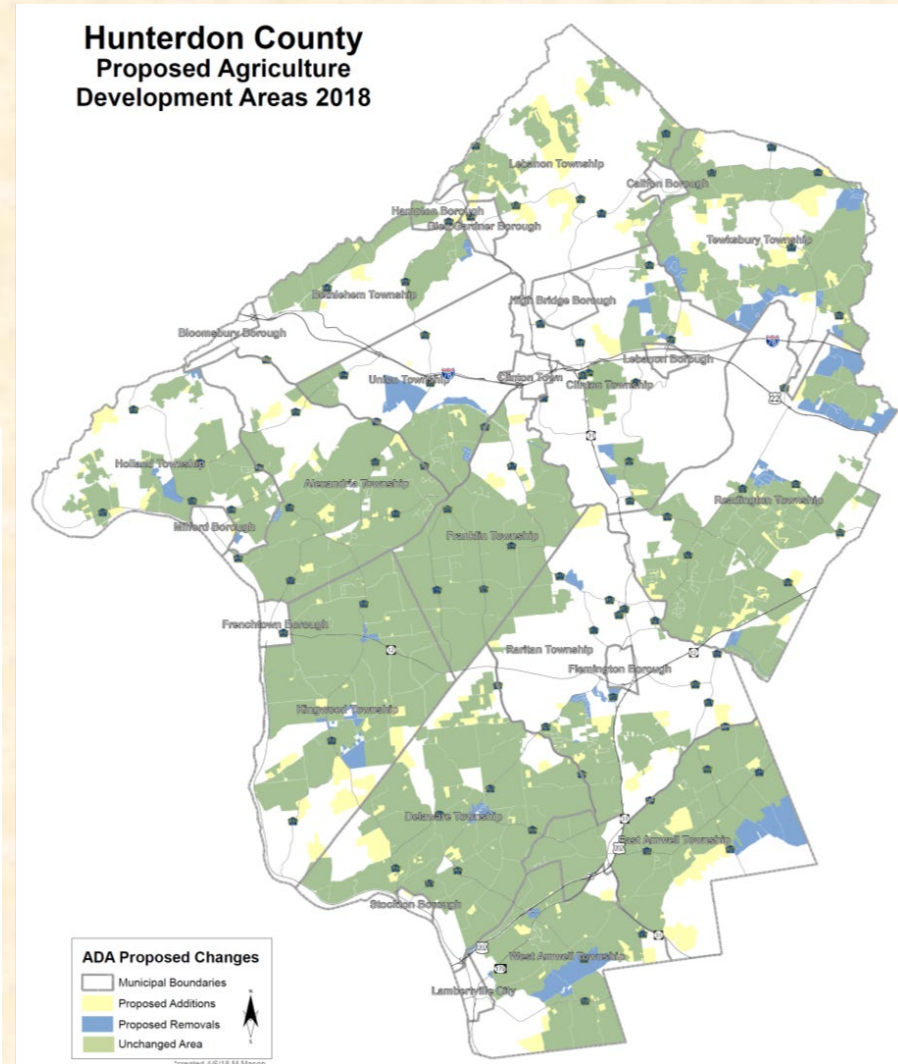
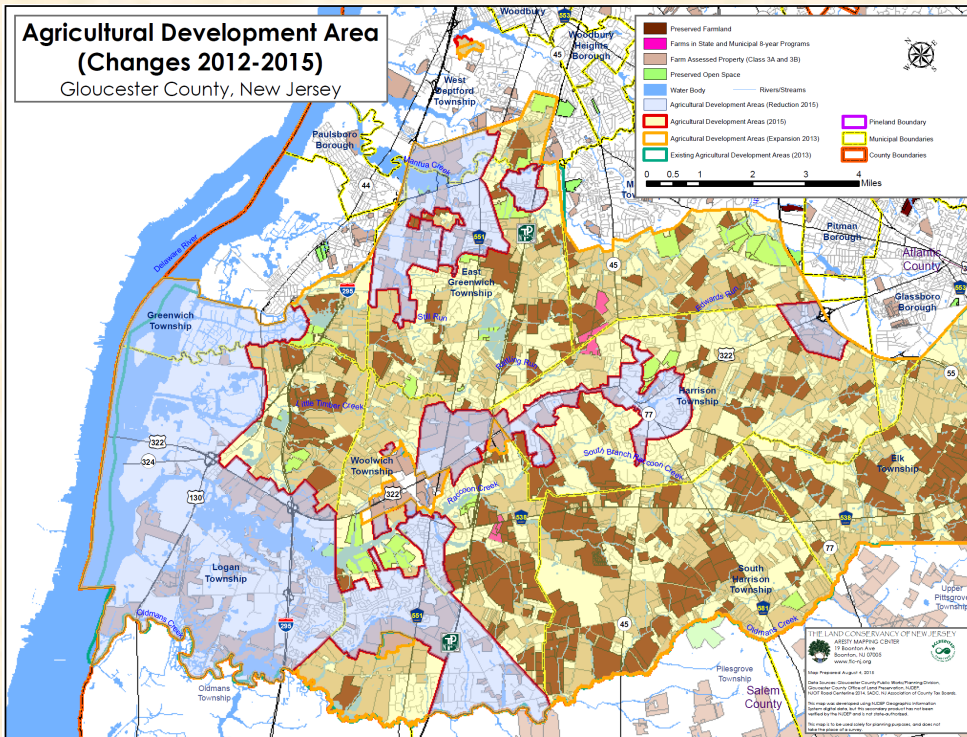
# Delegation of Authority: Agricultural Development Areas (ADAs)

Minor ADA Map Amendments  
<10% of ADA Area: Applicable





**Amendments (Criteria Amendments or Map Amendments >10%):**  
**Not Applicable**



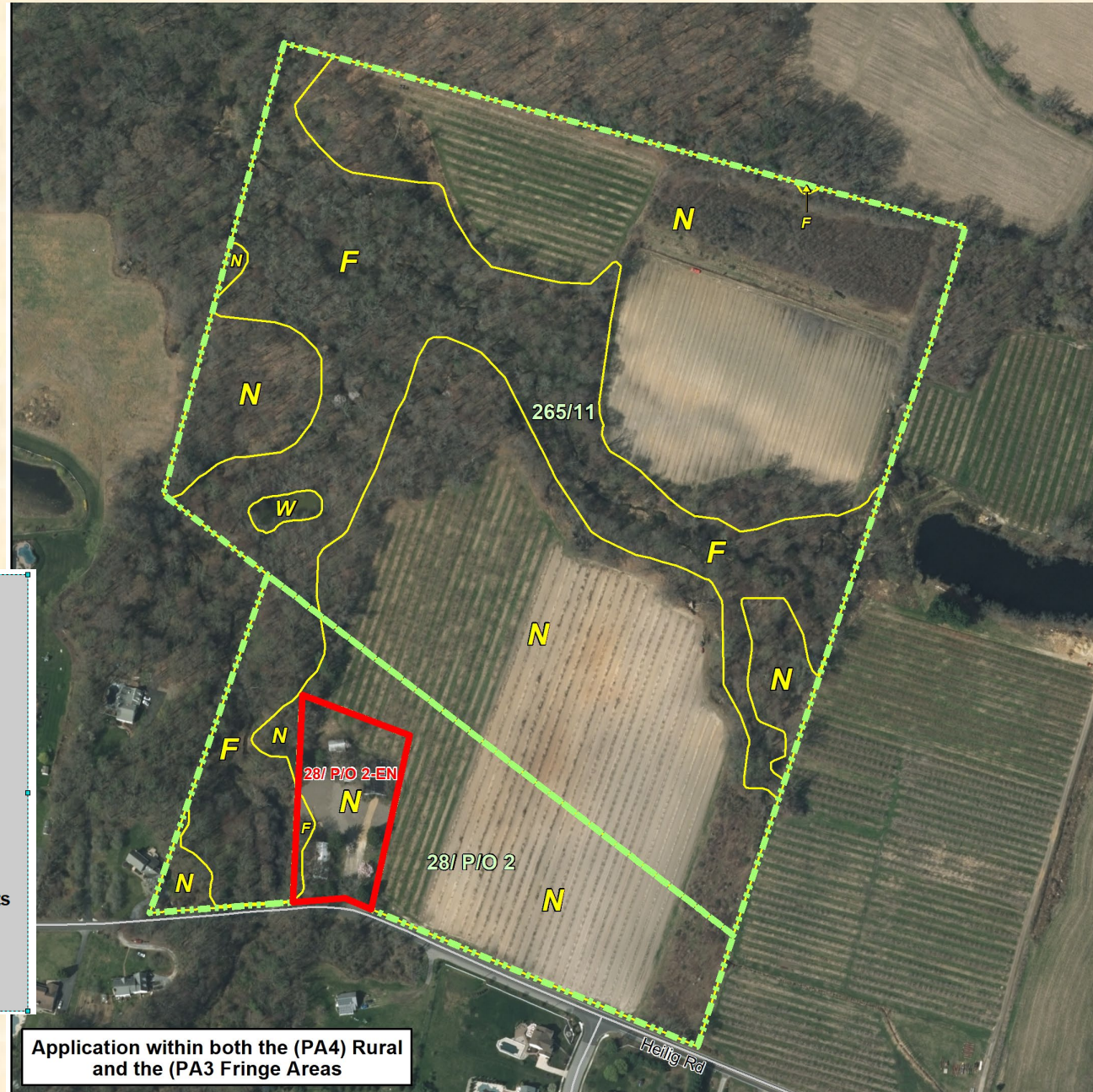


16 year Term Preservation Enrollment – Ward Eachus Farm  
 95.635 net ac - Harrison Twp, Gloucester County 91% in corn production





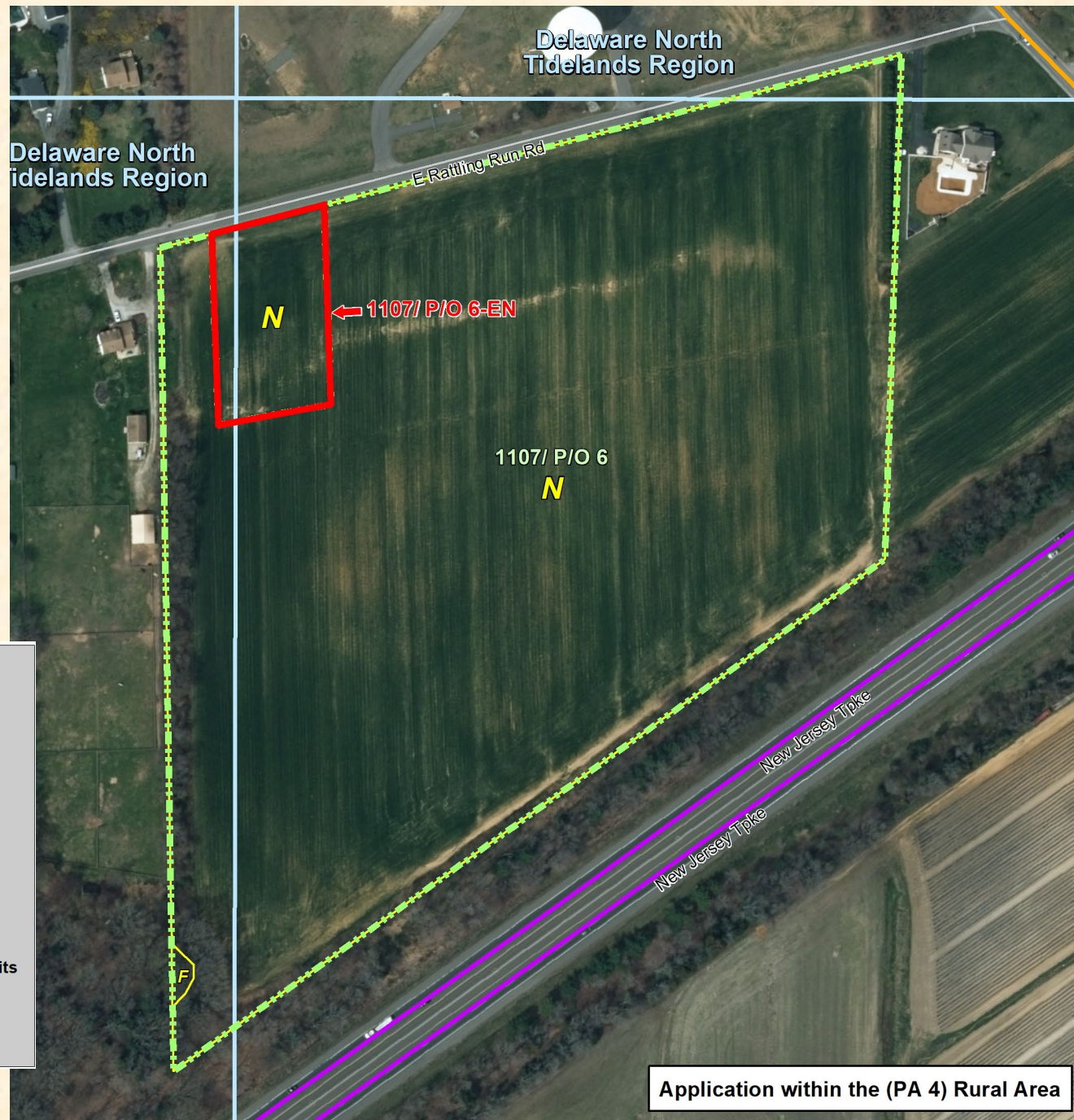
Charles Datz &  
Laura Lopez – Pelayo  
57.4 ac in Harrison & Mantua Twp  
Gloucester County  
48% in peach trees  
2 ac nonseverable exception



- Property In Question
- EN - (Non-Severable) Exception
- Wetlands Boundaries
- Primary - Limited Access
- Federal or State Hwys
- County Roads
- Municipal/Local Roads
- Highlands (or Pinelands) Development Credits
- Municipal, County and Non-Profit Preserved Open Space, State Owned Conservation Easements, & State Owned O/S & Recreation Easements



Lynda Juall Carpenito  
 21.16 ac in East Greenwich Twp,  
 Gloucester County  
 95% in soybean production  
 1 ac nonseverable exception



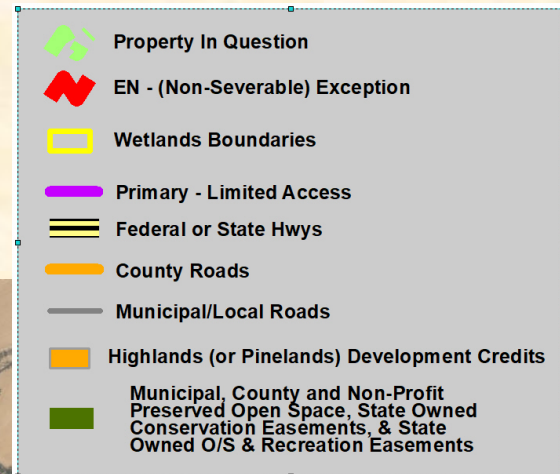
- Property In Question
- EN - (Non-Severable) Exception
- Wetlands Boundaries
- Primary - Limited Access
- Federal or State Hwys
- County Roads
- Municipal/Local Roads
- Tideland Boundary
- Highlands (or Pinelands) Development Credits
- Municipal, County and Non-Profit Preserved Open Space, State Owned Conservation Easements, & State Owned O/S & Recreation Easements



Carol Beatty (North)  
85 ac in Greenwich Twp, Warren County  
98% in corn production  
1 ac nonseverable exception

Application in the Highlands Planning Area (Non-Conforming)

Application within the (PA4b) Rural Env Sens Area



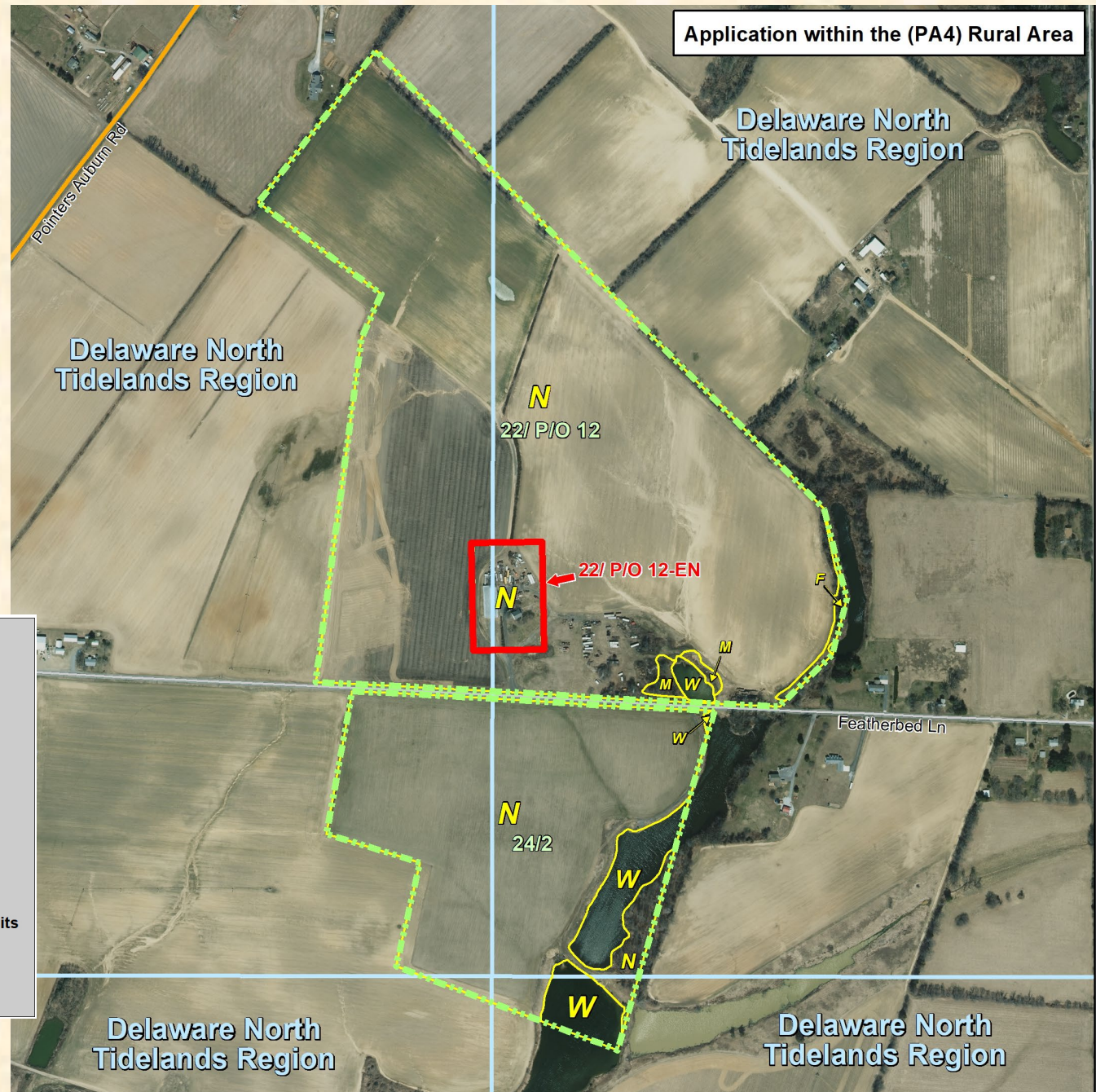


Earl & Robert Moore  
24.1 ac in Mannington Twp,  
Salem County  
96% in hay  
1 existing residence





Kelly et al (Powers)  
 159.4 ac in Pilesgrove Twp,  
 Salem County  
 89% in hay and soybean  
 4 ac non-severable exception  
 1 RDSO





Kelly et al (Sharp)  
 116.2 acres in Pilesgrove Twp,  
 Salem County  
 96% in soybean  
 4 ac non-severable exception  
 1 RDSO



- Property In Question
- EN - (Non-Severable) Exception
- Wetlands Boundaries
- Primary - Limited Access
- Federal or State Hwys
- County Roads
- Municipal/Local Roads
- Tideland Boundary
- Highlands (or Pinelands) Development Credits
- Municipal, County and Non-Profit Preserved Open Space, State Owned Conservation Easements, & State Owned O/S & Recreation Easements

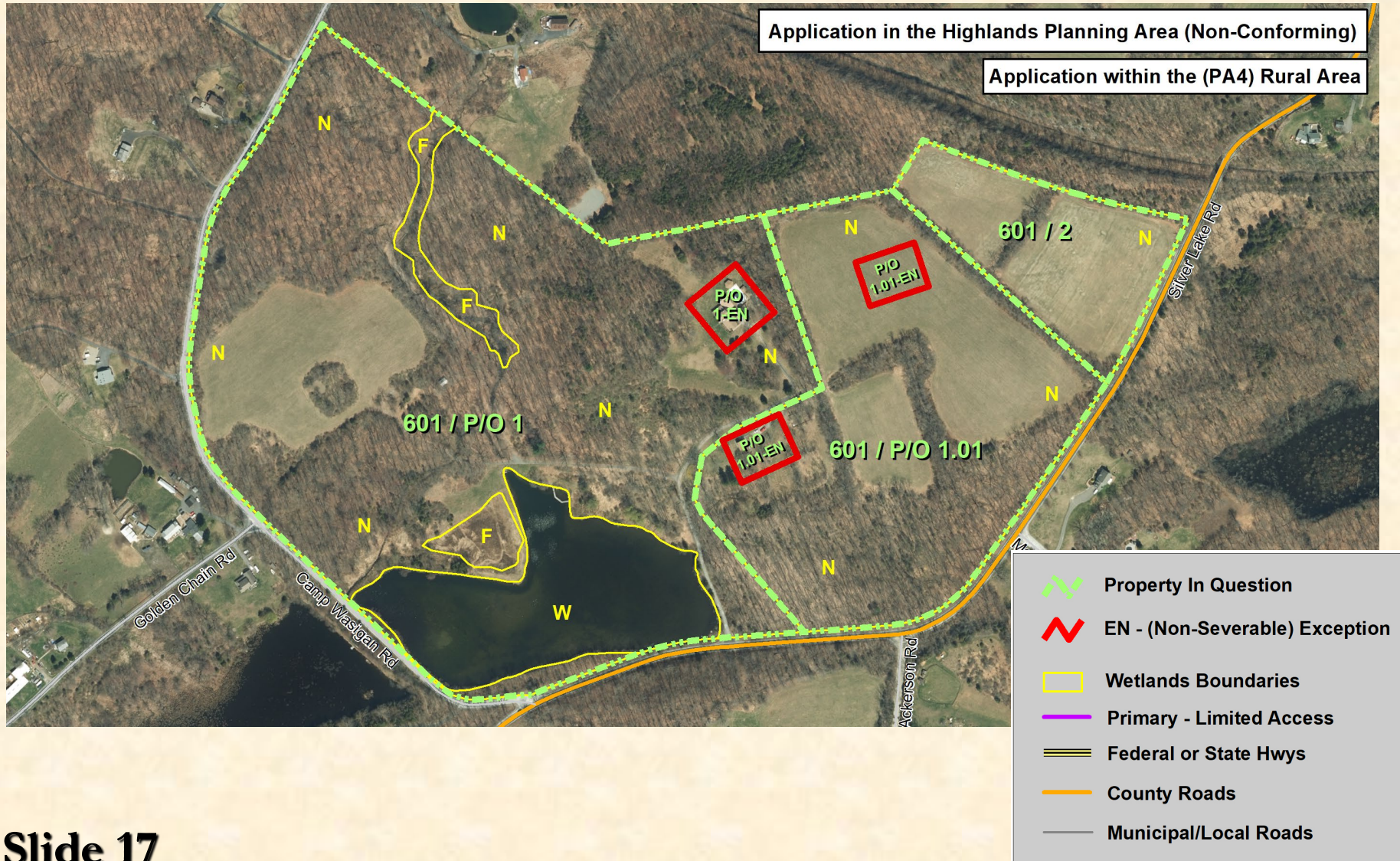


Daniel Rogers & Sioban Flaherty (Hidden Woods) TLC-NJ FY20

105.03 ac in Frelinghuysen Twp., Warren Co.

30% in hay

3, 1 ac nonseverable exceptions




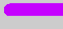

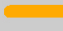
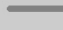

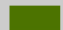









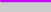



David & Shannon Black  
TLC-NJ – FY20  
35.51 ac in Hardwick Twp  
Warren County  
75% in hay, grain & small livestock  
1 ac nonseverable exception

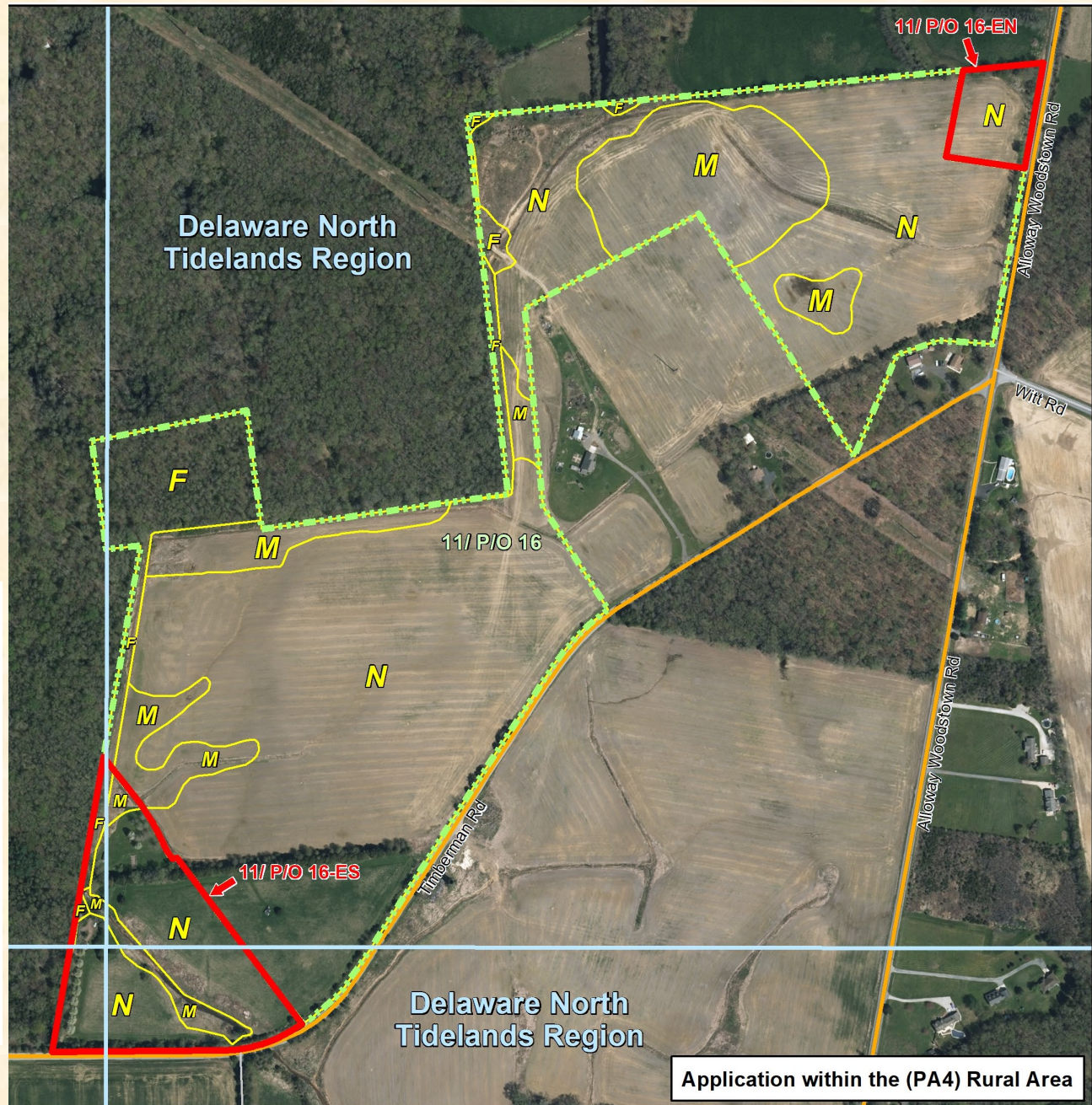
Application within the (PA 5) Environmentally Sensitive Area



-  Property In Question
-  EN - (Non-Severable) Exception
-  Wetlands Boundaries
-  Primary - Limited Access
-  Federal or State Hwys
-  County Roads
-  Municipal/Local Roads
-  Highlands (or Pinelands) Development Credits
-  Municipal, County and Non-Profit Preserved Open Space, State Owned Conservation Easements, & State Owned O/S & Recreation Easements



-  Property In Question
-  EN - (Non-Severable) Exception
-  ES - (Severable) Exception
-  Wetlands Boundaries
-  Primary - Limited Access
-  Federal or State Hwys
-  County Roads
-  Municipal/Local Roads
-  Municipal, County and Non-Profit Preserved Open Space, State Owned Conservation Easements, & State Owned O/S & Recreation Easements





Anthony & Joseph Cerbo  
38.45 ac in Hampton Twp.,  
Sussex County  
50 % in nursery production  
1.25 ac nonseverable exception



- Property In Question
- EN - (Non-Severable) Exception
- Wetlands Boundaries
- Primary - Limited Access
- Federal or State Hwys
- County Roads
- Municipal/Local Roads
- Highlands (or Pinelands) Development Credits
- Municipal, County and Non-Profit Preserved Open Space, State Owned Conservation Easements, & State Owned O/S & Recreation Easements



**STATE AGRICULTURE DEVELOPMENT COMMITTEE**

**RESOLUTION #FY2020R4( )**

**Delegation of Certain Actions to the Executive Director**

**April 23, 2020**

WHEREAS, the Right to Farm Act (Act), which created the State Agriculture Development Committee (SADC), contains language at N.J.S.A. 4:1C-5e. enabling the Committee to "perform any act or thing necessary, convenient, or desirable for the purposes of the committee to carry out any power expressly given" in the Act, which would include the authority to delegate certain actions to the Executive Director; and

WHEREAS, Part IV, Section 3 of the SADC By-Laws states that "The Executive Director shall have all the power and authority delegated to him/her in accordance with these By-Laws, actions of the Committee or otherwise pursuant to the 'Right to Farm Act' and the 'Agriculture Retention and Development Act'"; and

WHEREAS, by Executive Order No. 103 (2020) issued March 16, 2020, Governor Murphy declared that a public health emergency and state of emergency existed due to the COVID-19 pandemic and, among other things, authorized the executive head of any state agency to waive, suspend or modify any existing rule, subject to the Governor's prior approval in consultation with the State Director of Emergency Management and the Commissioner of the Department of Health; and

WHEREAS, by Executive Order No. 127 (2020) issued April 14, 2020, Governor Murphy extended statutory deadlines under which Executive Branch agencies must act for the period of time equal to the number of days during which the public health emergency exists; and

WHEREAS, the myriad statutory and regulatory duties of the SADC are ongoing, and must continue to be effectively administered and discharged, during the public health emergency,

NOW, THEREFORE, BE IT RESOLVED that:

1. The WHEREAS paragraphs above are incorporated herein by reference.
2. The SADC has determined that circumstances warrant the delegation of, and it so delegates, consistent with Executive Orders Nos. 103 and 127 and to the extent permitted by law, authority to the Executive Director, in consultation with and subject to the approval of the Secretary of Agriculture, to:
  - a. extend or waive any deadlines or due dates set forth in SADC regulations;
  - b. extend or waive any deadlines or due dates set forth in any SADC program or policy administered pursuant to the Agriculture Retention and Development Act, the Right to Farm Act, the Garden State Preservation Trust Act, and the Preserve New Jersey Act;



- c. extend or waive and deadlines or due dates in any contract or agreement in which the SADC is a party;
  - d. certify the values of development easements;
  - e. manage and direct, in consultation with the Office of the Attorney General, litigation in which the agency is a party.
- 3. Such delegated actions may be taken without the further approval of the SADC unless deemed necessary or appropriate by the Executive Director and/or the Secretary of Agriculture.
- 4. SADC staff shall provide notification of the exercise of any such delegated action in a written report to the SADC at regular monthly meetings.
- 5. The foregoing delegation shall remain in effect until Executive Order 103 is rescinded by the Governor and this resolution is rescinded by the SADC at a meeting physically attended by its members and convened in accordance with the Open Public Meetings Act.
- 6. This Resolution shall not be effective until the Governor's review period expires pursuant to N.J.S.A. 4:1C-4f.

\_\_\_\_\_  
Date

\_\_\_\_\_  
Susan E. Payne, Executive Director  
State Agriculture Development Committee

**VOTE WAS RECORDED AS FOLLOWS:**