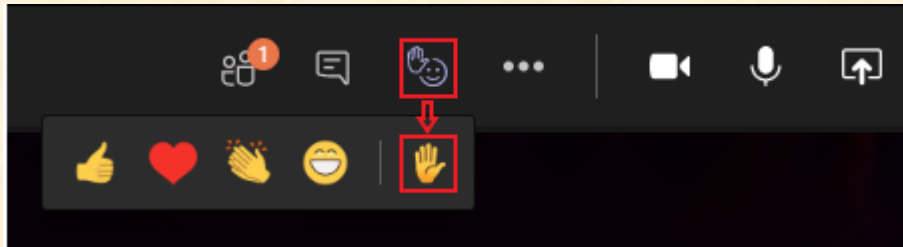




THE SADC HAS CHANGED HOW THE PUBLIC PARTICIPATES IN OUR MONTHLY MEETING

IF A MEMBER OF THE PUBLIC, WHO ATTENDS THE MEETING BY USING TEAMS OR THE URL LINK, WOULD LIKE TO ADDRESS THE COMMITTEE DURING THE PUBLIC PORTION OF THE MEETING, THEY CAN DO SO BY “RAISING YOUR HAND”



SIMPLY CLICK ON THE HAND AND FACE ICON AT THE TOP OF YOUR SCREEN WHILE IN THE MEETING AND THEN CLICK THE RAISE HAND. <https://youtu.be/xRi0hxL4yHo>

PLEASE WAIT FOR YOUR NAME TO BE CALLED BEFORE YOU BEGIN SPEAKING.

IF A MEMBER OF THE PUBLIC, WHO ATTENDS THE MEETING BY USING THE CALL-IN FEATURE, WOULD LIKE TO ADDRESS THE COMMITTEE DURING THE PUBLIC PORTION OF THE MEETING, THEY WILL BE GIVEN AN OPPORTUNITY AFTER ALL THE “RAISED HANDS” HAVE SPOKEN.

Slide 2



Please email Jessica Uttal, Jessica.uttal@ag.nj.gov, if you need further instructions.

TERM AGREEMENT DELEGATION REPORT

From: Stefanie Miller, Acquisition Team Leader

Date: June 16, 2021

Approximately one year ago the Acquisition Team took over processing Term Agreements and the SADC delegated routine SADC actions for acquisition, including new enrollments to the Term Program.



As of June 2021, there are:

- 18 expired Term Agreements, which staff is working on terminating or renewing.
- 42 active Term Agreements
- 2 new applications for enrollment and a number of renewals being explored

Active Term Agreements*

Atlantic	618.52 acres	18 Agreements	\$275,876 in Soil & Water Grant Eligibility
Burlington	1,453 acres	6 Agreements	\$170,034 in Soil & Water Grant Eligibility
Gloucester	390 acres	10 Agreements	\$198,962 in Soil & Water Grant Eligibility
Monmouth	5.48 acres	1 Agreement	\$3,288 in Soil & Water Grant Eligibility
Morris	97 acres	6 Agreements	\$57,654 in Soil & Water Grant Eligibility
Salem	34 acres	1 Agreement	\$20,400 in Soil & Water Grant Eligibility
Total Term Agreements	2,598 acres	42 Agreements	\$722,926 in Soil & Water Grant Eligibility

* Does not include expired Agreements in need of termination or renewal

Approvals for Acquisition












Slide 3

Stella Farms Inc
53 Easement Acres
Winslow Twp, Camden County
No exception areas or
residential opportunities
69% in corn

County Planning Incentive Grant
Minimum Eligibility Waiver





-  Property In Question
-  Exceptions
-  Preserved Easements
-  Transfer Development Rights (TDR)
Preserved: Highlands,
Pinelands and Municipal
-  Active Applications
-  County Boundaries
-  Municipal Boundaries
-  Pinelands (or Highlands) Development Credits
-  Municipal, County and Non-Profit
Preserved Open Space, State Owned
Conservation Easements, & State
Owned O/S & Recreation Easements

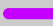
Stella Farms Inc
53 Easement Acres
Winslow Twp, Camden County
No exception areas or
residential opportunities
69% in corn


County Planning Incentive Grant
Minimum Eligibility Waiver

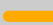
 Property In Question

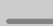
 Wetlands Boundaries


 300 ft Buffered Wetlands

 Primary - Limited Access

 Federal or State Hwys

 County Roads

 Municipal/Local Roads

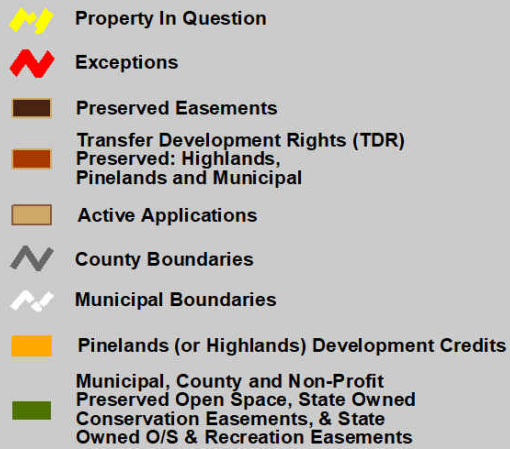
 Highlands (or Pinelands) Development Credits

 Municipal, County and Non-Profit Preserved Open Space, State Owned Conservation Easements, & State Owned O/S & Recreation Easements



Gruber, Barry W. et al
37.045 Easement Acres
East Greenwich Twp
Gloucester County
1 ac nonseverable exception
58% in corn

County Planning Incentive Grant

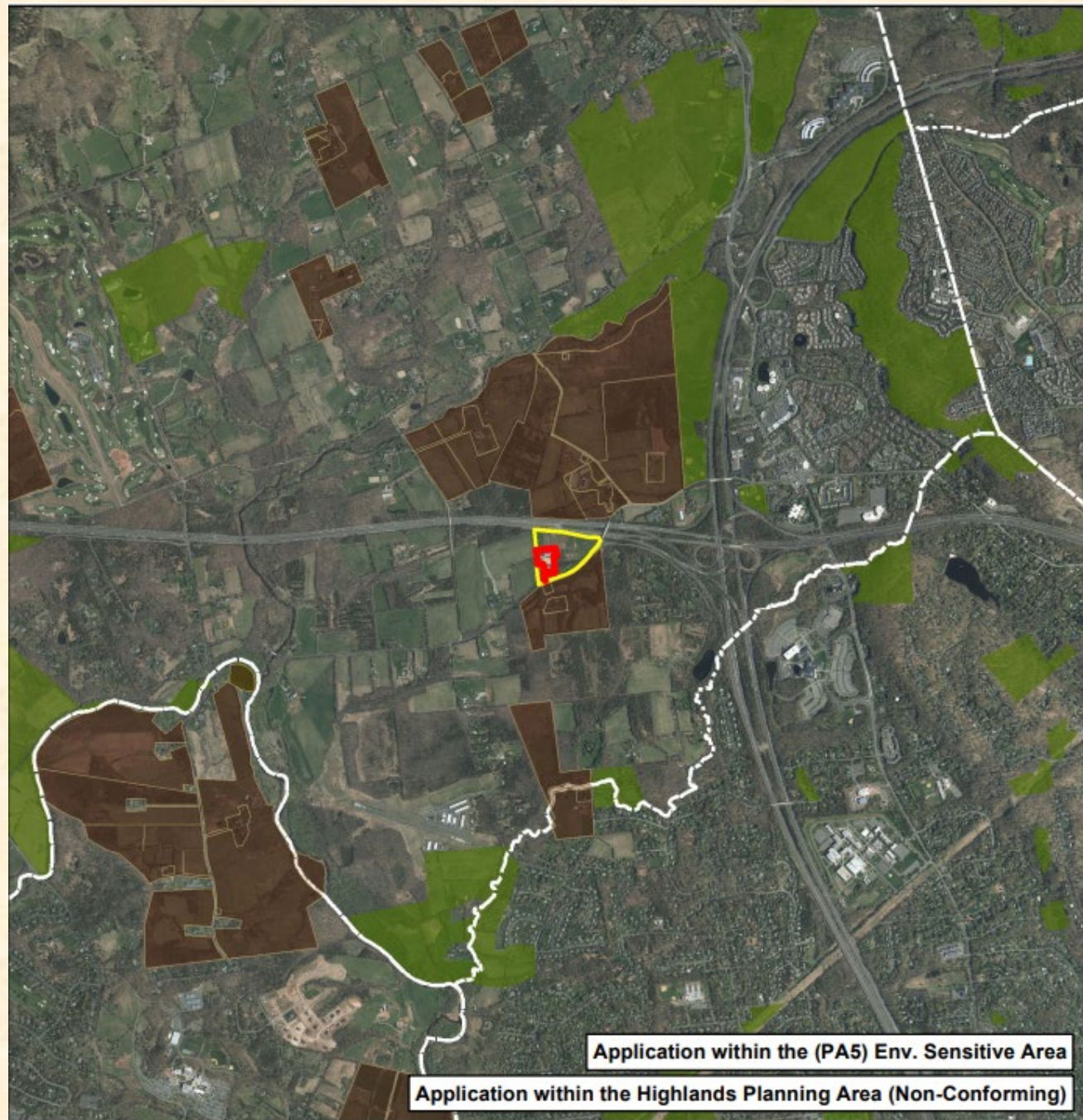
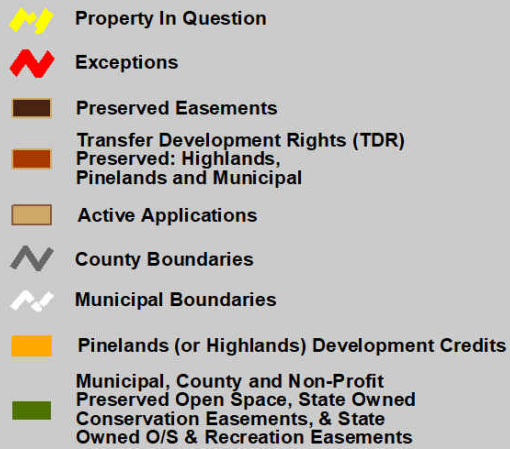


Gruber, Barry W. et al
37.045 Easement Acres East Greenwich Twp, Gloucester County
1 ac nonseverable exception 58% in corn
County Planning Incentive Grant



Palermo Show Stable, LLC
NJCF – FY2019
21 Easement Acres
Bedminster Twp
Somerset County
4 ac nonseverable exception
80% in hay & pasture

Nonprofit FY2019 Grant



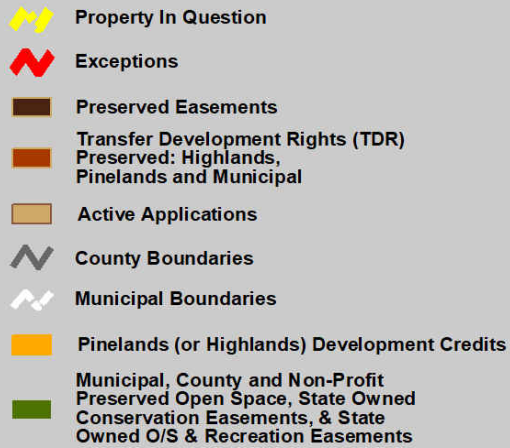
Palermo Show Stable, LLC
NJCF – FY2019
21 Easement Acres
Bedminster Twp
Somerset County
4 ac nonseverable exception
80% in hay & pasture

Nonprofit FY2019 Grant

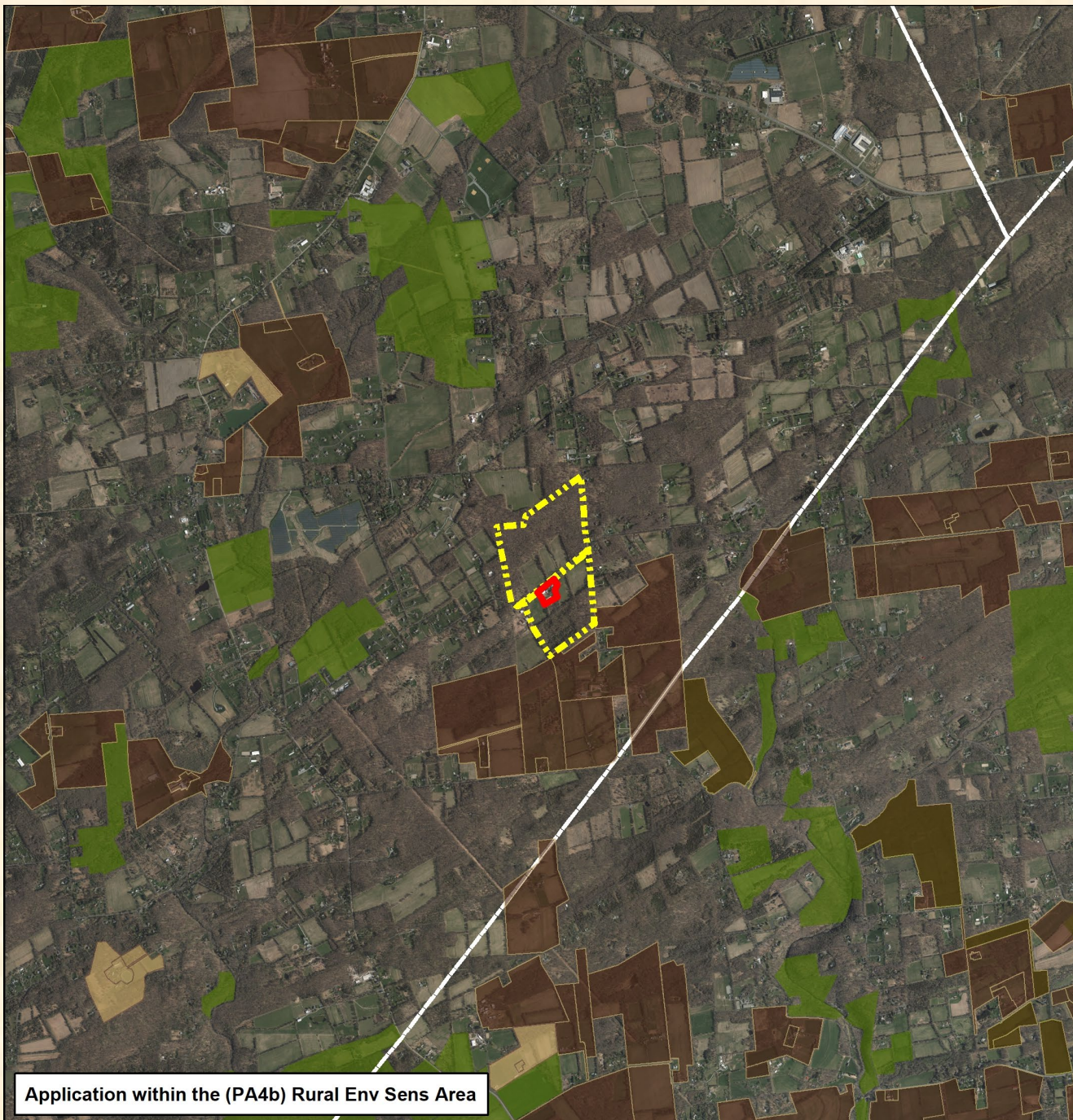


Christopher & Deirdre Ely
149.7 Easement Acres
Kingwood Twp
Hunterdon County
4 ac nonseverable exception
26% in hay

Direct Easement Purchase

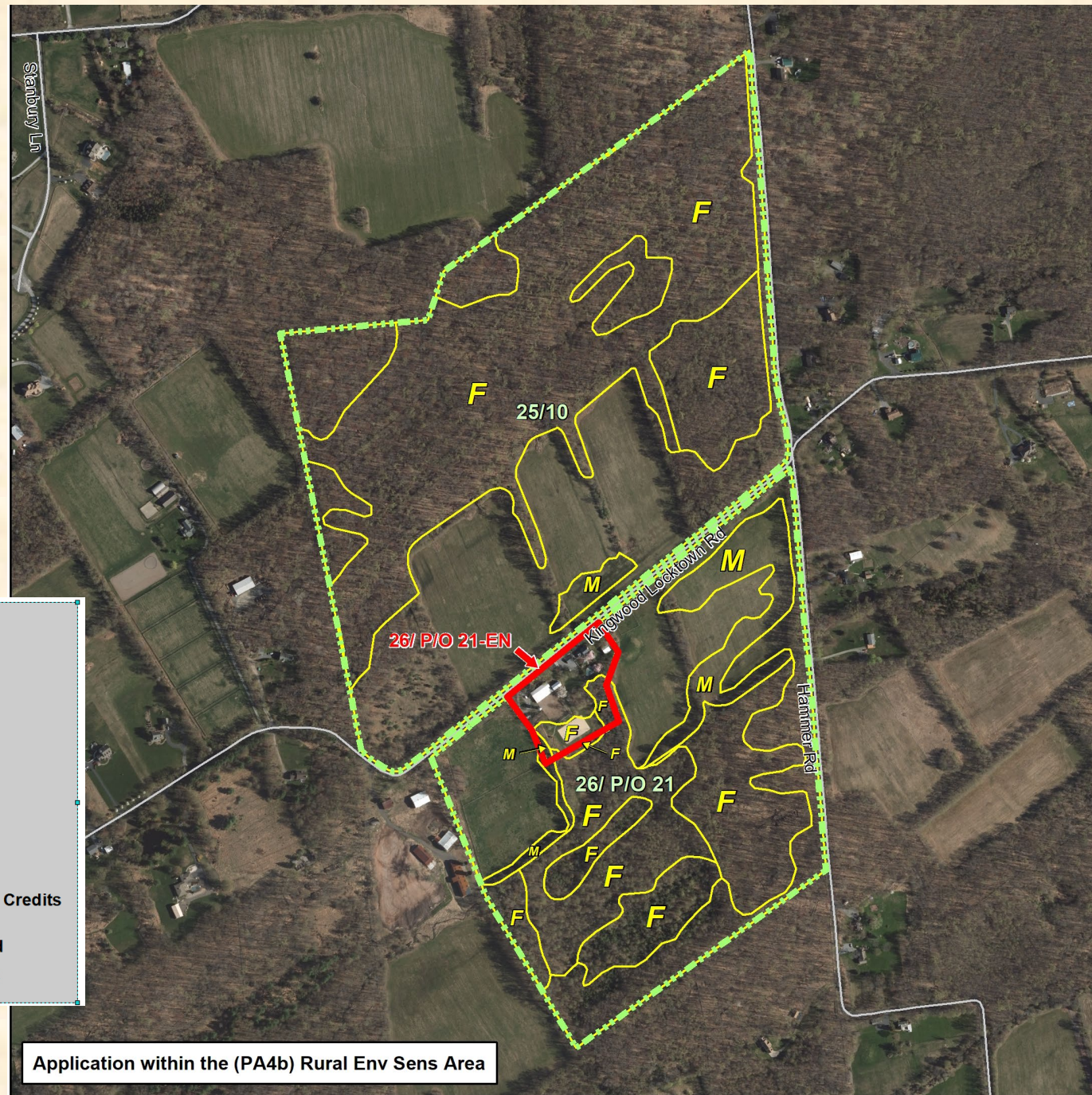


Slide 10



Christopher & Deirdre Ely
149.7 Easement Acres
Kingwood Twp
Hunterdon County
4 ac nonseverable exception
26% in hay

Direct Easement Purchase



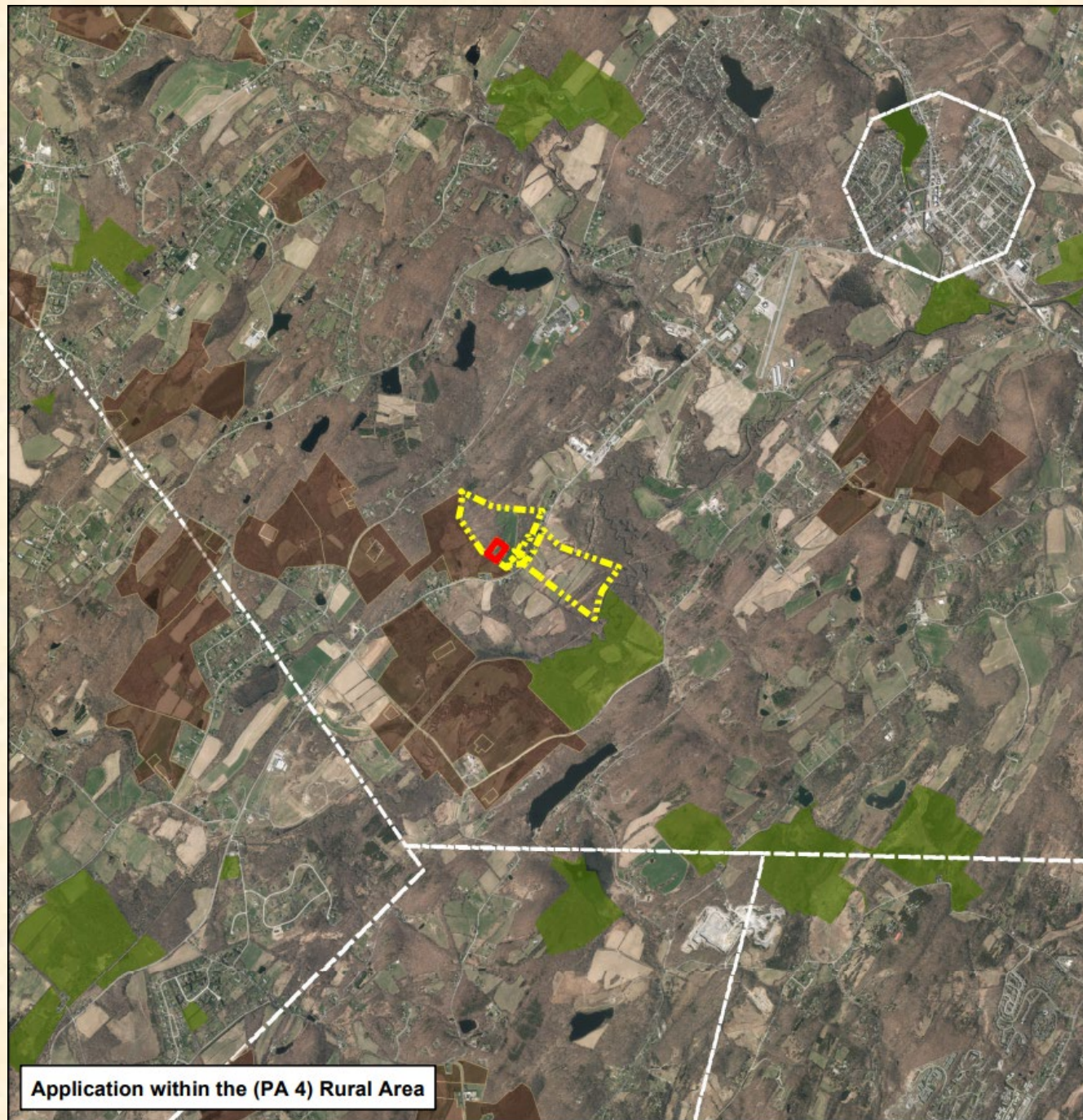
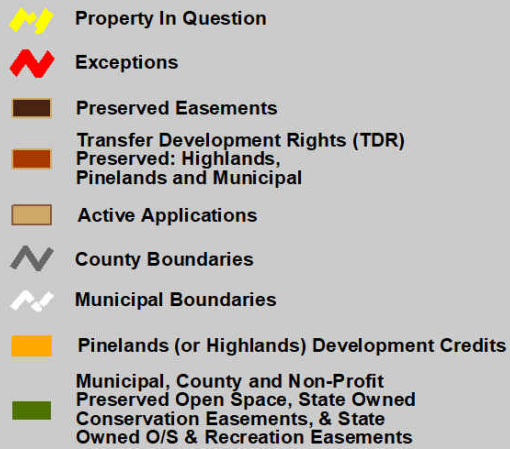
- Property In Question
- EN - (Non-Severable) Exception
- Wetlands Boundaries
- Primary - Limited Access
- Federal or State Hwys
- County Roads
- Municipal/Local Roads
- Highlands (or Pinelands) Development Credits
- Municipal, County and Non-Profit Preserved Open Space, State Owned Conservation Easements, & State Owned O/S & Recreation Easements

Slide 11

Application within the (PA4b) Rural Env Sens Area


Estate of Donald Elston Jr.
108.6 Easement Acres
Wantage Twp, Sussex County
3 ac nonseverable exception
43% in corn & hay

Direct Easement Purchase




Estate of Donald Elston Jr.
108.6 Easement Acres
Wantage Twp, Sussex County
3 ac nonseverable exception
43% in corn & hay

Direct Easement Purchase




Property In Question




EN - (Non-Severable) Exception




Wetlands Boundaries




Primary - Limited Access



Federal or State Hwys



County Roads



Municipal/Local Roads



Highlands (or Pinelands) Development Credits



Municipal, County and Non-Profit Preserved Open Space, State Owned Conservation Easements, & State Owned O/S & Recreation Easements

