

# **NEW JERSEY DEPARTMENT OF CORRECTIONS**

Gary M. Lanigan, Commissioner



## **OFFENDER CHARACTERISTICS REPORT**

**ON JANUARY 1, 2011**

Office of Policy and Planning

March 2011

## INTRODUCTION

*This report has been developed to provide information regarding offender characteristics in each correctional complex, major institution, and satellite housing-unit under the jurisdiction of the New Jersey Department of Corrections on January 1, 2011. The selected characteristics compiled in this report are Base Offense at Admission, Total Term at Admission, Ethnicity, Age, County of Commitment, and Mandatory Minimum Term.*

*The Prison Complex includes, New Jersey State Prison, Central Reception and Assignment Facility, East Jersey State Prison, Bayside State Prison, Midstate, Southern State, Northern State Prison, South Woods, Edna Mahan Correctional Facility for Women and the Adult Diagnostic and Treatment Center (ADTC), a facility for adult male sex offenders.*

*NOTE: In the data tables, separate subtotals are provided for ADTC and Edna Mahan Correctional Facility for Women due to the interest in these unique populations. The remainder of the Prison Complex is labeled "Prison Males".*

*The Youth Correctional Complex consists of Garden State Youth Correctional Facility, Albert C. Wagner Youth Correctional Facility and Mountainview Youth Correctional Facility.*

*"Offenders in Other Facilities" include state-sentenced inmates housed in county jails, Halfway Houses, and Central Medical Unit (St. Francis Hospital).*

*"Not Coded" are records for offenders in the correctional system for whom admission characteristics data had not been entered into the computerized information system as of January 1, 2011.*

## HIGHLIGHTS

- *Fifty-one percent (51%) of all New Jersey Department of Corrections inmates were committed for crimes against persons which include Homicide, Sexual Assault, Aggravated/Simple Assault, Robbery, Kidnapping, Other Sex Offenses and Other Person Offenses.*
- *Twenty-four percent (24%) of all Department of Corrections inmates have been committed for narcotics law violations, including possession, sale and distribution. Seventy-nine percent (79%) of all narcotics law violations are sale/distribution offenses.*
- *The median total term for Department of Corrections' inmates is 5.7 years.*
- *Thirty-four percent (34%) of all New Jersey Department of Corrections inmates were committed with total terms of 10 years or more. Of the total, five percent (5%) are serving Life Sentences with parole eligibility, and 62 offenders are serving Life Sentences without parole.*
- *Seventy-one percent (71%) of New Jersey Department of Corrections inmates housed in the State System have sentences that include mandatory minimum terms.*
- *Thirty-nine percent (39%) of all inmates in the New Jersey Department of Corrections are 30 years of age or younger. The median age for inmates in our adult facilities is 33.*
- *Sixty-one percent (61%) of New Jersey Department of Corrections' inmates are Black, while 21% are White and 17% are Hispanic.*
- *Of the 21 New Jersey counties, ten (Atlantic, Bergen, Camden, Essex, Hudson, Mercer, Middlesex, Monmouth, Passaic and Union) account for 79% of total Department of Corrections inmates. Essex County is the highest contributor with 15%.*

## NOTES

### **DUE TO SOFTWARE AND ROUNDING:**

- **WORKSHEET ROW AND COLUMN TOTALS DO NOT ALWAYS EQUAL 100 PERCENT.**
- **PIE CHART PERCENTAGES DO NOT ALWAYS EQUAL 100%.**
- **PIE CHART PERCENTAGES MAY DIFFER SLIGHTLY FROM WORKSHEET PERCENTAGES.**
- **ACCOMPANYING NARRATIVES REFLECT PIE CHART PERCENTAGES.**

**TOTAL INMATES IN NEW JERSEY STATE CORRECTIONAL INSTITUTIONS AND SATELLITES**

<b>TOTAL INMATES</b>		<b>25,139</b>
<b>PRISON COMPLEX</b>	<b>17,407</b>	<b>YOUTH COMPLEX</b>
<b>ADTC</b>	<b>700</b>	<b>GARDEN STATE TOTAL</b>
Bayside – Main	1,333	<b>MOUNTAINVIEW TOTAL</b>
Bayside – Farm	659	Wagner – Main
Bayside – Ancora	298	Wagner – Ad Seg
<b>BAYSIDE TOTAL</b>	<b>2,290</b>	Wagner – Minimum Units
CRAF – Jones Farm	269	<b>WAGNER TOTAL</b>
CRAF – Reception	606	<b>OTHER FACILITIES</b>
<b>CRAF TOTAL</b>	<b>875</b>	Central Medical
East Jersey – Main	1,369	County Jail
East Jersey – Camp	111	Halfway Houses
<b>EAST JERSEY TOTAL</b>	<b>1,480</b>	
<b>EDNA MAHAN TOTAL</b>	<b>825</b>	
<b>MIDSTATE TOTAL</b>	<b>697</b>	
NJ State Prison – Ad Seg Female	30	
NJ State Prison – Main	1,921	
<b>NJ STATE PRISON TOTAL</b>	<b>1,951</b>	
Northern State – Main	2,301	
Northern State – Ad Seg Male	599	
<b>NORTHERN STATE TOTAL</b>	<b>2,900</b>	
<b>SOUTHERN STATE TOTAL</b>	<b>2,315</b>	
<b>SOUTH WOODS TOTAL</b>	<b>3,374</b>	

## TABLE OF CONTENTS

<b><u>REPORT NAME</u></b>	<b><u>PAGE</u></b>
<i>OFFENDERS IN NEW JERSEY CORRECTIONAL INSTITUTIONS BY BASE OFFENSE</i>	7
<i>Prison Complex Offenders</i>	8-11
<i>Youth Complex Offenders</i>	12
<i>Adult Offenders in Other Facilities</i>	13
<i>OFFENDERS IN NEW JERSEY CORRECTIONAL INSTITUTIONS BY TOTAL TERM AT ADMISSION</i>	14
<i>Prison Complex Offenders</i>	15-18
<i>Youth Complex Offenders</i>	19
<i>Adult Offenders in Other Facilities</i>	20
<i>OFFENDERS IN NEW JERSEY CORRECTIONAL INSTITUTIONS BY MANDATORY MINIMUM TERM</i>	21
<i>Prison Complex Offenders</i>	22-25
<i>Youth Complex Offenders</i>	26
<i>Adult Offenders in Other Facilities</i>	27
<i>OFFENDERS IN NEW JERSEY CORRECTIONAL INSTITUTIONS BY AGE</i>	28
<i>Prison Complex Offenders</i>	29-32
<i>Youth Complex Offenders</i>	33
<i>Adult Offenders in Other Facilities</i>	34
<i>OFFENDERS IN NEW JERSEY CORRECTIONAL INSTITUTIONS BY ETHNIC IDENTIFICATION</i>	35
<i>Prison Complex Offenders</i>	36-39
<i>Youth Complex Offenders</i>	40
<i>Adult Offenders in Other Facilities</i>	41
<i>OFFENDERS IN NEW JERSEY CORRECTIONAL INSTITUTIONS BY COUNTY OF COMMITMENT</i>	42
<i>Prison Complex Offenders</i>	43-46
<i>Youth Complex Offenders</i>	47
<i>Adult Offenders in Other Facilities</i>	48

***BASE OFFENSE***

**OFFENDERS IN NEW JERSEY CORRECTIONAL INSTITUTIONS  
ON JANUARY 1, 2011, BY BASE OFFENSE**

In these tabulations, the base offense is the most serious offense at the time of admission. These figures reflect base or controlling offenses at admission only, and do not include any offenses in addition to the base offense in the case of multiple sentences at admission. Additional sentences imposed following initial admission to the state correctional system are not included in these data.

- Violent offenses include homicide, sexual assault, aggravated and simple assault, robbery, kidnapping, other sex offenses and other person offenses (i.e. terroristic threats, coercion, larceny from a person, death by auto and negligent manslaughter).
- Property offenses include burglary, arson, theft, forgery, embezzlement, and receiving / possessing stolen property.
- Public policy offenses include racketeering, gambling, corruption, perjury, escape, bail jumping, juvenile and family related offenses, and conspiracy.
- Weapons offenses include weapon possession and operation.
- Drug violations include distribution, manufacture, possession, and use of drugs. Virtually all drug offenses are for sale and distribution rather than for mere possession.

**OFFENDERS IN CORRECTIONAL INSTITUTIONS BY BASE OFFENSE**

Base Offense	Total		Prison Males		Youth Complex		ADTC		Edna Mahan		Other Facilities	
	#	%	#	%	#	%	#	%	#	%	#	%
TOTAL OFFENDERS	25,139	100%	15,882	100%	4,353	100%	700	100%	825	100%	3,379	100%
Violent Offenses	12,777	51%	8,960	56%	2,066	47%	679	97%	407	49%	665	20%
Property Offenses	2,632	10%	1,699	11%	375	9%	2	0%	135	16%	421	12%
Public Policy	1,080	4%	666	4%	204	5%	12	2%	66	8%	132	4%
Weapons	1,982	8%	939	6%	672	15%	0	0%	16	2%	355	11%
Drugs	6,135	24%	3,542	22%	1,032	24%	6	1%	193	23%	1,362	40%
Not Coded	533	2%	76	0%	4	0%	1	0%	8	1%	444	13%

- Inmates with violent offenses comprise 56% of the prison complex, 47% of the youth complex, 97% of ADTC, 49% of Edna Mahan, and 20% of other adult facilities.



### Prison Complex Offenders By Base Offense

Institution	Total	Violent Offenses	Homicide	Sexual Assault	Assault	Robbery	Kidnap	Other Sex	Other Person	Property	Public Policy	Weapons	Drugs	Not Coded
<b>Bayside Main</b>	1,333 100%	558 42%	89 7%	22 2%	165 12%	258 19%	2 0%	21 2%	1 0%	173 13%	72 5%	145 11%	383 29%	2 0%
<b>Bayside Farm</b>	659 100%	300 46%	75 11%	0 0%	90 14%	127 19%	2 0%	3 0%	3 0%	104 16%	37 6%	44 7%	174 26%	0 0%
<b>Bayside Ancora</b>	298 100%	11 4%	0 0%	0 0%	4 1%	7 2%	0 0%	0 0%	0 0%	72 24%	15 5%	33 11%	167 56%	0 0%
<b>Bayside Total</b>	2,290 100%	869 38%	164 7%	22 1%	259 11%	392 17%	4 0%	24 1%	4 0%	349 15%	124 5%	222 10%	724 32%	2 0%
<b>CRAF Jones Farm</b>	269 100%	1 0%	0 0%	0 0%	1 0%	0 0%	0 0%	0 0%	0 0%	107 40%	13 5%	0 0%	148 55%	0 0%
<b>CRAF Reception</b>	606 100%	175 29%	17 3%	27 4%	55 9%	58 10%	2 0%	16 3%	0 0%	103 17%	41 7%	33 5%	200 33%	54 9%
<b>CRAF Total</b>	875 100%	176 20%	17 2%	27 3%	56 6%	58 7%	2 0%	16 2%	0 0%	210 24%	54 6%	33 4%	348 40%	54 6%
<b>East Jersey Main</b>	1,369 100%	1,180 86%	603 44%	70 5%	73 5%	374 27%	58 4%	2 0%	0 0%	22 2%	18 1%	34 2%	114 8%	1 0%
<b>East Jersey Camp</b>	111 100%	38 34%	0 0%	0 0%	12 11%	25 23%	0 0%	1 1%	0 0%	17 15%	7 6%	6 5%	43 39%	0 0%
<b>East Jersey Total</b>	1,480 100%	1,218 82%	603 41%	70 5%	85 6%	399 27%	58 4%	3 0%	0 0%	39 3%	25 2%	40 3%	157 11%	1 0%

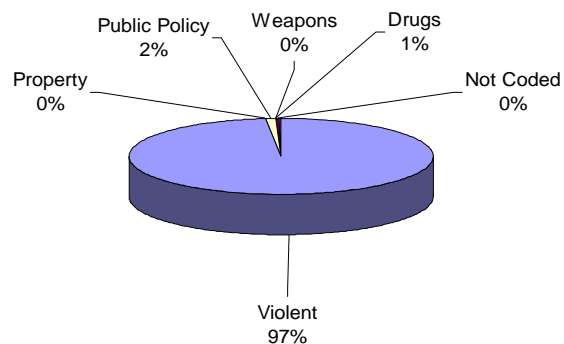
### Prison Complex Offenders By Base Offense

Institution	Total	Violent Offenses	Homicide	Sexual Assault	Assault	Robbery	Kidnap	Other Sex	Other Person	Property	Public Policy	Weapons	Drugs	Not Coded
Midstate	697 100%	368 53%	18 3%	125 18%	67 10%	47 7%	8 1%	98 14%	5 1%	119 17%	44 6%	32 5%	132 19%	2 0%
NJ State Prison Ad Seg Female	30 100%	23 77%	3 10%	0 0%	9 30%	10 33%	0 0%	1 3%	0 0%	4 13%	0 0%	0 0%	3 10%	0 0%
NJ State Prison Main	1,921 100%	1,684 88%	1,094 57%	89 5%	103 5%	323 17%	69 4%	3 0%	3 0%	42 2%	30 2%	32 2%	124 6%	9 0%
NJ State Prison Total	1,951 100%	1,707 87%	1,097 56%	89 5%	112 6%	333 17%	69 4%	4 0%	3 0%	46 2%	30 2%	32 2%	127 7%	9 0%
Northern Main	2,301 100%	1,385 60%	387 17%	147 6%	236 10%	549 24%	39 2%	24 1%	3 0%	200 9%	102 4%	129 6%	481 21%	4 0%
Northern Ad Seg Male	599 100%	332 55%	67 11%	14 2%	77 13%	161 27%	8 1%	4 1%	1 0%	53 9%	25 4%	65 11%	124 21%	0 0%
Northern Total	2,900 100%	1,717 59%	454 16%	161 6%	313 11%	710 24%	47 2%	28 1%	4 0%	253 9%	127 4%	194 7%	605 21%	4 0%
Southern	2,315 100%	709 31%	69 3%	42 2%	257 11%	309 13%	3 0%	27 1%	2 0%	384 17%	144 6%	189 8%	887 38%	2 0%
South Woods	3,374 100%	2,196 65%	561 17%	330 10%	356 11%	812 24%	53 2%	76 2%	8 0%	299 9%	118 3%	197 6%	562 17%	2 0%
<b>SUBTOTAL PRISON MALES</b>	<b>15,882 100%</b>	<b>8,960 56%</b>	<b>2,983 19%</b>	<b>866 5%</b>	<b>1,505 9%</b>	<b>3,060 19%</b>	<b>244 2%</b>	<b>276 2%</b>	<b>26 0%</b>	<b>1,699 11%</b>	<b>666 4%</b>	<b>939 6%</b>	<b>3,542 22%</b>	<b>76 0%</b>

## Prison Complex Offenders By Base Offense

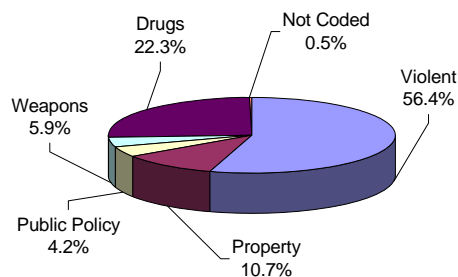
Institution	Total	Violent Offenses	Homicide	Sexual Assault	Assault	Robbery	Kidnap	Other Sex	Other Person	Property	Public Policy	Weapons	Drugs	Not Coded
ADTC	700	679	4	584	3	4	21	56	7	2	12	0	6	1
	100%	97%	1%	83%	0%	1%	3%	8%	1%	0%	2%	0%	1%	0%
<b>SUBTOTAL</b>	<b>16,582</b>	<b>9,639</b>	<b>2,987</b>	<b>1,450</b>	<b>1,508</b>	<b>3,064</b>	<b>265</b>	<b>332</b>	<b>33</b>	<b>1,701</b>	<b>678</b>	<b>939</b>	<b>3,548</b>	<b>77</b>
	<b>100%</b>	<b>58%</b>	<b>18%</b>	<b>9%</b>	<b>9%</b>	<b>18%</b>	<b>2%</b>	<b>2%</b>	<b>0%</b>	<b>10%</b>	<b>4%</b>	<b>6%</b>	<b>21%</b>	<b>0%</b>
Mahan - Female Prison	825	407	176	11	78	112	8	21	1	135	66	16	193	8
	100%	49%	21%	1%	9%	14%	1%	3%	0%	16%	8%	2%	23%	1%
<b>Total Prison Complex</b>	<b>17,407</b>	<b>10,046</b>	<b>3,163</b>	<b>1,461</b>	<b>1,586</b>	<b>3,176</b>	<b>273</b>	<b>353</b>	<b>34</b>	<b>1,836</b>	<b>744</b>	<b>955</b>	<b>3,741</b>	<b>85</b>
	<b>100%</b>	<b>58%</b>	<b>18%</b>	<b>8%</b>	<b>9%</b>	<b>18%</b>	<b>2%</b>	<b>2%</b>	<b>0%</b>	<b>11%</b>	<b>4%</b>	<b>5%</b>	<b>21%</b>	<b>0%</b>

### ADTC



Virtually all offenders at ADTC were committed for violent offenses.

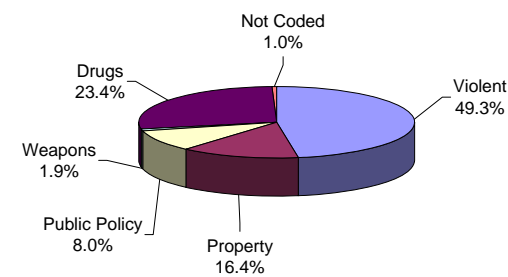
### PRISON MALES



Fifty-six percent (56%) of male offenders in the prison complex were convicted of a violent offense (ADTC excluded).

Twenty-two percent (22%) of all male prison complex offenders were convicted of drug offenses.

### FEMALE FACILITIES



Violent offenses were the most frequent commitment-offenses at Edna Mahan (49%).

Twenty-three percent (23%) of female inmates were committed for drug offenses.

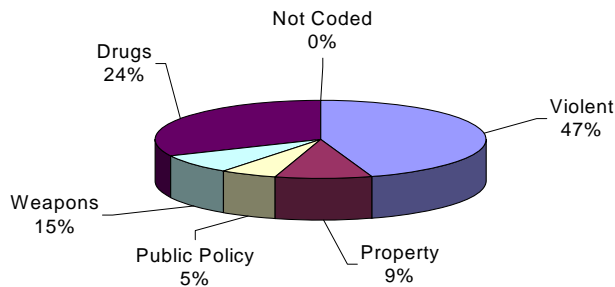
### Youth Complex Offenders By Base Offense

Institution	Total	Violent Offenses	Homicide	Sexual Assault	Assault	Robbery	Kidnap	Other Sex	Other Person	Property	Public Policy	Weapons	Drugs	Not Coded
<b>Garden State</b>	1,864	1005	123	97	254	477	12	39	3	141	80	252	384	2
	100%	54%	7%	5%	14%	26%	1%	2%	0%	8%	4%	14%	21%	0%
<b>Mountainview</b>	1,154	359	28	15	107	195	3	11	0	129	70	220	375	1
	100%	31%	2%	1%	9%	17%	0%	1%	0%	11%	6%	19%	32%	0%
<b>Wagner Main</b>	887	495	65	13	141	259	5	11	1	62	37	120	172	1
	100%	56%	7%	1%	16%	29%	1%	1%	0%	7%	4%	14%	19%	0%
<b>Wagner Ad Seg</b>	282	146	16	1	41	84	0	3	1	29	11	44	52	0
	100%	52%	6%	0%	15%	30%	0%	1%	0%	10%	4%	16%	18%	0%
<b>Wagner Minimum Units</b>	166	61	7	0	18	33	2	0	1	14	6	36	49	0
	100%	37%	4%	0%	11%	20%	1%	0%	1%	8%	4%	22%	30%	0%
<b>Wagner Total</b>	1,335	702	88	14	200	376	7	14	3	105	54	200	273	1
	100%	53%	7%	1%	15%	28%	1%	1%	0%	8%	4%	15%	20%	0%
<b>Total Youth</b>	<b>4,353</b>	<b>2,066</b>	<b>239</b>	<b>126</b>	<b>561</b>	<b>1,048</b>	<b>22</b>	<b>64</b>	<b>6</b>	<b>375</b>	<b>204</b>	<b>672</b>	<b>1,032</b>	<b>4</b>
	<b>100%</b>	<b>47%</b>	<b>5%</b>	<b>3%</b>	<b>13%</b>	<b>24%</b>	<b>1%</b>	<b>1%</b>	<b>0%</b>	<b>9%</b>	<b>5%</b>	<b>15%</b>	<b>24%</b>	<b>0%</b>

### Offenders In Other Facilities By Base Offense

Institution	Total	Violent Offenses	Homicide	Sexual Assault	Assault	Robbery	Kidnap	Other Sex	Other Person	Property	Public Policy	Weapons	Drugs	Not Coded
Central Medical	10	6	1	2	2	1	0	0	0	1	2	0	1	0
	100%	60%	10%	20%	20%	10%	0%	0%	0%	10%	20%	0%	10%	0%
County Jail	529	35	9	1	6	15	1	3	0	12	2	2	37	441
	100%	7%	2%	0%	1%	3%	0%	1%	0%	2%	0%	0%	7%	83%
Halfway House	2,840	624	73	0	197	326	4	22	2	408	128	353	1,324	3
	100%	22%	3%	0%	7%	11%	0%	1%	0%	14%	5%	12%	47%	0%
<b>Total Other Facilities</b>	<b>3,379</b>	<b>665</b>	<b>83</b>	<b>3</b>	<b>205</b>	<b>342</b>	<b>5</b>	<b>25</b>	<b>2</b>	<b>421</b>	<b>132</b>	<b>355</b>	<b>1,362</b>	<b>444</b>
	<b>100%</b>	<b>20%</b>	<b>2%</b>	<b>0%</b>	<b>6%</b>	<b>10%</b>	<b>0%</b>	<b>1%</b>	<b>0%</b>	<b>12%</b>	<b>4%</b>	<b>11%</b>	<b>40%</b>	<b>13%</b>

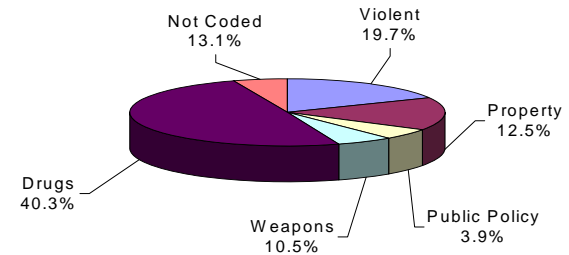
#### YOUTH COMPLEX



Forty-seven percent (47%) of offenders housed in the youth complex were incarcerated for violent offenses.

Twenty-four percent (24%) of offenders housed in the youth complex were incarcerated for drug offenses and 9% for property offenses

#### OFFENDERS IN OTHER FACILITIES



Offenders housed in county jails and halfway houses are less serious offenders than those found in the prison complex facilities (i.e. 20% violent offenses vs. 56% violent offenses in prison complex).

Forty percent (40%) of offenders housed in 'other facilities' were committed for drug offenses.

***TOTAL MAXIMUM TERM AT ADMISSION***

**OFFENDERS IN NEW JERSEY CORRECTIONAL INSTITUTIONS  
ON JANUARY 1, 2011, BY TOTAL TERM AT ADMISSION**

Total term at admission is the total maximum term imposed for each offender at the time of commitment from the community or from parole. This includes the aggregate term for those admitted with multiple sentences. Additional sentences received following initial admission are not reflected or included in the data.

**OFFENDERS IN NEW JERSEY CORRECTIONAL INSTITUTIONS BY TOTAL TERM AT ADMISSION**

Total Term	Total		Prison Males		Youth Complex		ADTC		Edna Mahan		Other Facilities	
	#	%	#	%	#	%	#	%	#	%	#	%
TOTAL OFFENDERS	25,139	100%	15,882	100%	4,353	100%	700	100%	825	100%	3,379	100%
1-2 Years	814	3%	570	4%	142	3%	5	1%	43	5%	54	2%
3 Years	3,609	14%	1,927	12%	947	22%	25	4%	164	20%	546	16%
4 Years	2,602	10%	1,457	9%	582	13%	27	4%	101	12%	435	13%
5 Years	4,369	17%	2,338	15%	1,045	24%	67	10%	120	15%	799	24%
6 Years	1,326	5%	689	4%	307	7%	40	6%	38	5%	252	7%
7 Years	1,546	6%	850	5%	342	8%	84	12%	39	5%	231	7%
8-9 Years	1,518	6%	911	6%	299	7%	63	9%	37	4%	208	6%
10 Years	1,546	6%	986	6%	228	5%	105	15%	53	6%	174	5%
11-14 Years	1,431	6%	1,037	7%	179	4%	77	11%	43	5%	95	3%
15 Years	712	3%	535	3%	77	2%	45	6%	28	3%	27	1%
16-20 Years	1,225	5%	1,003	6%	91	2%	61	9%	41	5%	29	1%
21+ Years	2,358	9%	2,116	13%	34	1%	96	14%	68	8%	44	1%
Life With Parole	1,158	5%	1,131	7%	0	0%	3	0%	23	3%	1	0%
Life Without Parole	62	0%	61	0%	0	0%	0	0%	0	0%	1	0%
Not Coded	863	3%	271	2%	80	2%	2	0%	27	3%	483	14%

Among New Jersey Adult Correctional Offenders:

- The median term for adult offenders is 5.7 years.
- Forty-four percent (44%) are serving terms of 1-5 years.
- Seventeen percent (17%) are serving terms of 6-9 years.
- Thirty-four percent (34%) are serving terms of 10 years or more, which includes 1,158 offenders serving life and 62 life without parole sentences.
- Three percent (3%) were not coded.

### Prison Complex Offenders By Total Term At Admission

Institution	Total	1-2 Years	3 Years	4 Years	5 Years	6 Years	7 Years	8-9 Years	10 Years	11-14 Years	15 Years	16-20 Years	20+ Years	Life With Parole	Life Without Parole	Not Coded
<b>Bayside Main</b>	1,333 100%	61 5%	192 14%	140 11%	269 20%	69 5%	104 8%	129 10%	120 9%	89 7%	30 2%	42 3%	43 3%	16 1%	0 0%	29 2%
<b>Bayside Farm</b>	659 100%	34 5%	144 22%	84 13%	103 16%	26 4%	30 5%	34 5%	38 6%	63 10%	14 2%	33 5%	36 5%	0 0%	0 0%	20 3%
<b>Bayside Ancora</b>	298 100%	25 8%	73 24%	64 21%	60 20%	16 5%	17 6%	17 6%	7 2%	6 2%	1 0%	1 0%	0 0%	0 0%	0 0%	11 4%
<b>Bayside Total</b>	2,290 100%	120 5%	409 18%	288 13%	432 19%	111 5%	151 7%	180 8%	165 7%	158 7%	45 2%	76 3%	79 3%	16 1%	0 0%	60 3%
<b>CRAF Jones Farm</b>	269 100%	25 9%	113 42%	70 26%	34 13%	7 3%	7 3%	0 0%	2 1%	0 0%	0 0%	0 0%	0 0%	0 0%	0 0%	11 4%
<b>CRAF Reception</b>	606 100%	62 10%	126 21%	96 16%	130 21%	26 4%	30 5%	29 5%	19 3%	11 2%	5 1%	3 0%	8 1%	0 0%	0 0%	61 10%
<b>CRAF Total</b>	875 100%	87 10%	239 27%	166 19%	164 19%	33 4%	37 4%	29 3%	21 2%	11 1%	5 1%	3 0%	8 1%	0 0%	0 0%	72 8%
<b>East Jersey Main</b>	1,369 100%	4 0%	13 1%	9 1%	21 2%	8 1%	12 1%	38 3%	73 5%	136 10%	106 8%	238 17%	463 34%	247 18%	0 0%	1 0%
<b>East Jersey Camp</b>	111 100%	6 5%	24 22%	11 10%	19 17%	8 7%	1 1%	2 2%	7 6%	16 14%	6 5%	7 6%	2 2%	0 0%	0 0%	2 2%
<b>East Jersey Total</b>	1,480 100%	10 1%	37 3%	20 1%	40 3%	16 1%	13 1%	40 3%	80 5%	152 10%	112 8%	245 17%	465 31%	247 17%	0 0%	3 0%



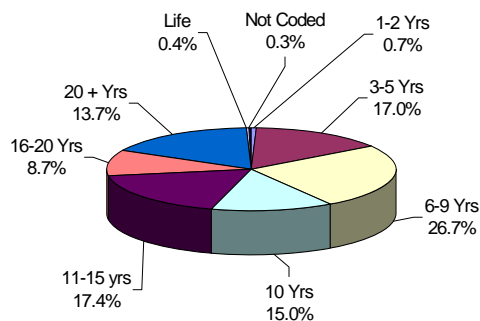
### Prison Complex Offenders By Total Term At Admission

Institution	Total	1-2 Years	3 Years	4 Years	5 Years	6 Years	7 Years	8-9 Years	10 Years	11-14 Years	15 Years	16-20 Years	20+ Years	Life With Parole	Life Without Parole	Not Coded
<b>Midstate</b>	697 100%	63 9%	173 25%	120 17%	147 21%	44 6%	56 8%	36 5%	26 4%	11 2%	5 1%	3 0%	3 0%	1 0%	0 0%	9 1%
<b>NJ State Prison Ad Seg Female</b>	30 100%	0 0%	7 23%	4 13%	7 23%	3 10%	3 10%	2 7%	1 3%	1 3%	1 3%	1 3%	0 0%	0 0%	0 0%	0 0%
<b>NJ State Prison Main</b>	1,921 100%	15 1%	52 3%	37 2%	86 4%	21 1%	33 2%	29 2%	40 2%	37 2%	21 1%	52 3%	809 42%	616 32%	61 3%	12 1%
<b>NJ State Prison Total</b>	1,951 100%	15 1%	59 3%	41 2%	93 5%	24 1%	36 2%	31 2%	41 2%	38 2%	22 1%	53 3%	809 41%	616 32%	61 3%	12 1%
<b>Northern Main</b>	2,301 100%	54 2%	234 10%	163 7%	310 13%	119 5%	138 6%	134 6%	200 9%	218 9%	103 4%	207 9%	307 13%	95 4%	0 0%	19 1%
<b>Northern Ad Seg Male</b>	599 100%	14 2%	75 13%	66 11%	115 19%	35 6%	28 5%	34 6%	61 10%	47 8%	19 3%	45 8%	46 8%	9 2%	0 0%	5 1%
<b>Northern Total</b>	2,900 100%	68 2%	309 11%	229 8%	425 15%	154 5%	166 6%	168 6%	261 9%	265 9%	122 4%	252 9%	353 12%	104 4%	0 0%	24 1%
<b>Southern</b>	2,315 100%	120 5%	429 19%	374 16%	538 23%	134 6%	175 8%	190 8%	129 6%	83 4%	18 1%	34 1%	18 1%	4 0%	0 0%	69 3%
<b>South Woods</b>	3,374 100%	87 3%	272 8%	219 6%	499 15%	173 5%	216 6%	237 7%	263 8%	319 9%	206 6%	337 10%	381 11%	143 4%	0 0%	22 1%
<b>SUBTOTAL PRISON MALES</b>	<b>15,882 100%</b>	<b>570 4%</b>	<b>1,927 12%</b>	<b>1,457 9%</b>	<b>2,338 15%</b>	<b>689 4%</b>	<b>850 5%</b>	<b>911 6%</b>	<b>986 6%</b>	<b>1,037 7%</b>	<b>535 3%</b>	<b>1,003 6%</b>	<b>2,116 13%</b>	<b>1,131 7%</b>	<b>61 0%</b>	<b>271 2%</b>

## Prison Complex Offenders By Total Term At Admission

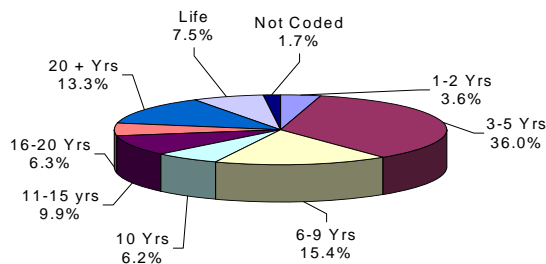
Institution	Total	1-2 Years	3 Years	4 Years	5 Years	6 Years	7 Years	8-9 Years	10 Years	11-14 Years	15 Years	16-20 Years	20+ Years	Life With Parole	Life Without Parole	Not Coded
ADTC	700 100%	5 1%	25 4%	27 4%	67 10%	40 6%	84 12%	63 9%	105 15%	77 11%	45 6%	61 9%	96 14%	3 0%	0 0%	2 0%
<b>SUBTOTAL</b>	<b>16,582</b> <b>100%</b>	<b>575</b> <b>3%</b>	<b>1,952</b> <b>12%</b>	<b>1,484</b> <b>9%</b>	<b>2,405</b> <b>15%</b>	<b>729</b> <b>4%</b>	<b>934</b> <b>6%</b>	<b>974</b> <b>6%</b>	<b>1,091</b> <b>7%</b>	<b>1,114</b> <b>7%</b>	<b>580</b> <b>3%</b>	<b>1,064</b> <b>6%</b>	<b>2,212</b> <b>13%</b>	<b>1,134</b> <b>7%</b>	<b>61</b> <b>0%</b>	<b>273</b> <b>2%</b>
Mahan - Female Prison	825 100%	43 5%	164 20%	101 12%	120 15%	38 5%	39 5%	37 4%	53 6%	43 5%	28 3%	41 5%	68 8%	23 3%	0 0%	27 3%
<b>Total Prison Complex</b>	<b>17,407</b> <b>100%</b>	<b>618</b> <b>4%</b>	<b>2,116</b> <b>12%</b>	<b>1,585</b> <b>9%</b>	<b>2,525</b> <b>15%</b>	<b>767</b> <b>4%</b>	<b>973</b> <b>6%</b>	<b>1,011</b> <b>6%</b>	<b>1,144</b> <b>7%</b>	<b>1,157</b> <b>7%</b>	<b>608</b> <b>3%</b>	<b>1,105</b> <b>6%</b>	<b>2,280</b> <b>13%</b>	<b>1,157</b> <b>7%</b>	<b>61</b> <b>0%</b>	<b>300</b> <b>2%</b>

**ADTC**



The median term at ADTC is 10 years.

**PRISON MALES**

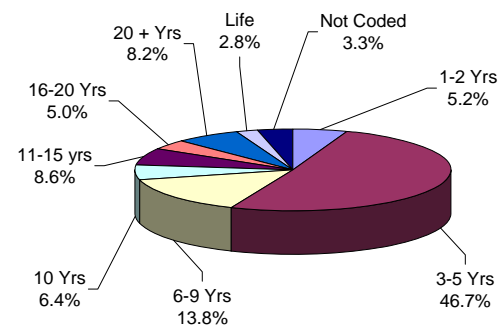


The median term for prison males is 7 years.

Twenty-seven percent (27%) of all prison males are serving sentences of 16 years or more.

Seventy-nine percent (79%) of all offenders at New Jersey State Prison are serving sentences of 16 years or more, with 616 life with parole and 61 life without parole.

**FEMALE FACILITIES**



The median term at Edna Mahan is 5 years.

Fifty-two per cent (52%) of the female offenders at Edna Mahan Correctional Facility for Women are serving sentences of 5 years or less.

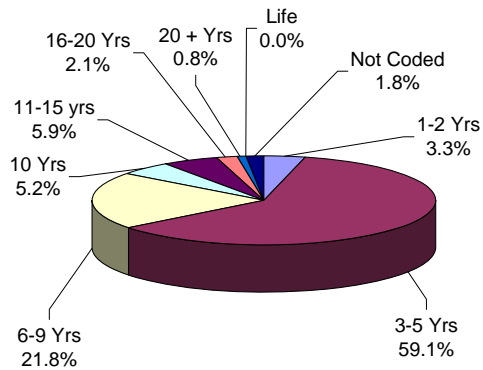
### Youth Complex Offenders By Total Term At Admission

Institution	Total	1-2 Years	3 Years	4 Years	5 Years	6 Years	7 Years	8-9 Years	10 Years	11-14 Years	15 Years	16-20 Years	20+ Years	Life With Parole	Life Without Parole	Not Coded
<b>Garden State</b>	1,864 100%	68 4%	317 17%	226 12%	445 24%	127 7%	163 9%	163 9%	119 6%	98 5%	37 2%	53 3%	22 1%	0 0%	0 0%	26 1%
<b>Mountainview</b>	1,154 100%	41 4%	366 32%	187 16%	304 26%	82 7%	63 5%	57 5%	23 2%	4 0%	0 0%	2 0%	0 0%	0 0%	0 0%	25 2%
<b>Wagner Main</b>	887 100%	21 2%	168 19%	106 12%	185 21%	63 7%	88 10%	53 6%	60 7%	60 7%	30 3%	26 3%	9 1%	0 0%	0 0%	18 2%
<b>Wagner Ad Seg</b>	282 100%	6 2%	57 20%	45 16%	77 27%	17 6%	16 6%	17 6%	13 5%	8 3%	10 4%	10 4%	3 1%	0 0%	0 0%	3 1%
<b>Wagner Minimum Units</b>	166 100%	6 4%	39 23%	18 11%	34 20%	18 11%	12 7%	9 5%	13 8%	9 5%	0 0%	0 0%	0 0%	0 0%	0 0%	8 5%
<b>Wagner Total</b>	1,335 100%	33 2%	264 20%	169 13%	296 22%	98 7%	116 9%	79 6%	86 6%	77 6%	40 3%	36 3%	12 1%	0 0%	0 0%	29 2%
<b>Total Youth</b>	<b>4,353 100%</b>	<b>142 3%</b>	<b>947 22%</b>	<b>582 13%</b>	<b>1,045 24%</b>	<b>307 7%</b>	<b>342 8%</b>	<b>299 7%</b>	<b>228 5%</b>	<b>179 4%</b>	<b>77 2%</b>	<b>91 2%</b>	<b>34 1%</b>	<b>0 0%</b>	<b>0 0%</b>	<b>80 2%</b>

## Offenders In Other Facilities By Total Term At Admission

Institution	Total	1-2 Years	3 Years	4 Years	5 Years	6 Years	7 Years	8-9 Years	10 Years	11-14 Years	15 Years	16-20 Years	20+ Years	Life	Capital	Not Coded
Central Medical	10 100%	0 0%	0 0%	0 0%	3 30%	1 10%	1 10%	0 0%	1 10%	1 10%	0 0%	2 20%	1 10%	0 0%	0 0%	0 0%
County Jail	529 100%	6 1%	16 3%	9 2%	8 2%	2 0%	3 1%	6 1%	0 0%	0 0%	0 0%	0 0%	2 0%	1 0%	1 0%	475 90%
Halfway House	2,840 100%	48 2%	530 19%	426 15%	788 28%	249 9%	227 8%	202 7%	173 6%	94 3%	27 1%	27 1%	41 1%	0 0%	0 0%	8 0%
<b>Total Other Facilities</b>	<b>3,379 100%</b>	<b>54 2%</b>	<b>546 16%</b>	<b>435 13%</b>	<b>799 24%</b>	<b>252 7%</b>	<b>231 7%</b>	<b>208 6%</b>	<b>174 5%</b>	<b>95 3%</b>	<b>27 1%</b>	<b>29 1%</b>	<b>44 1%</b>	<b>1 0%</b>	<b>1 0%</b>	<b>483 14%</b>

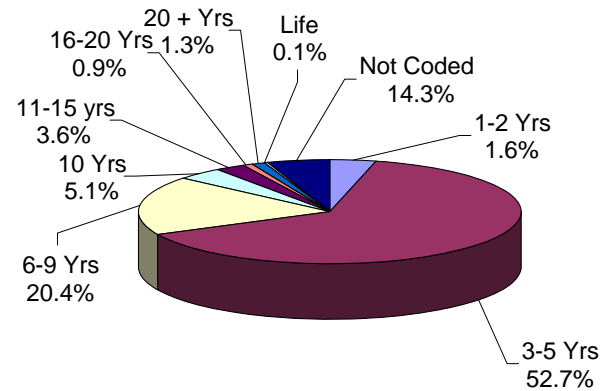
### YOUTH COMPLEX



The median youth complex term is 5 years.

No youth complex offenders are currently serving life sentences.

### OFFENDERS IN OTHER FACILITIES



The median term for offenders housed in 'other facilities' is 5 years.

Fifty-four percent (54%) of offenders housed in 'other facilities' are serving terms of 5 years or less.

***MANDATORY MINIMUM TERM***

**OFFENDERS IN NEW JERSEY CORRECTIONAL INSTITUTIONS  
ON JANUARY 1, 2011, BY MANDATORY MINIMUM TERM**

In New Jersey, since 1979, the courts have utilized mandatory minimum sentences. This means that an offender must serve the entire minimum sentence before being eligible for parole consideration. Mandatory minimum terms are not reduced by earned credits (commutation, minimum security or work).

**OFFENDERS IN CORRECTIONAL INSTITUTIONS BY MANDATORY MINIMUM TERM**

Mandatory Minimum Term	Total		Prison Males		Youth Complex		ADTC		Edna Mahan		Other Facilities	
	#	%	#	%	#	%	#	%	#	%	#	%
TOTAL OFFENDERS	17,875	100%	11,568	100%	3,133	100%	545	100%	489	100%	2,140	100%
<18 Months	1,030	6%	416	4%	365	12%	1	0%	23	5%	225	11%
18 Months	587	3%	318	3%	135	4%	1	0%	9	2%	124	6%
2 Years	1,047	6%	577	5%	150	5%	2	0%	24	5%	294	14%
3 Years	3,074	17%	1,548	13%	744	24%	13	2%	68	14%	701	33%
4 Years	1,072	6%	595	5%	221	7%	10	2%	26	5%	220	10%
5 Years	1,955	11%	1,098	9%	486	16%	57	10%	65	13%	249	12%
6-9 Years	3,483	19%	2,156	19%	731	23%	260	48%	92	19%	244	11%
10 Years	251	1%	187	2%	25	1%	23	4%	3	1%	13	1%
11-14 Years	1,645	9%	1261	11%	184	6%	94	17%	59	12%	47	2%
15 Years	323	2%	261	2%	15	0%	23	4%	12	2%	12	1%
16-19 Years	872	5%	746	6%	58	2%	28	5%	36	7%	4	0%
20-24 Years	477	3%	430	4%	14	0%	13	2%	14	3%	6	0%
25-29 Years	369	2%	348	3%	3	0%	12	2%	5	1%	1	0%
30 Years	847	5%	806	7%	2	0%	4	1%	35	7%	0	0%
30+ Years	843	5%	821	7%	0	0%	4	1%	18	4%	0	0%

- Seventy-one percent (71%) of all adult offenders have mandatory minimum terms (17,875 out of 25,139).
- The median mandatory minimum term is 5 years.
- Twenty-two percent (22%) of those with mandatory minimum terms have mandatory minimum terms of 15 years or more.

### Prison Complex Offenders By Mandatory Minimum Term

Institution	Total	< 18 Months	18 Months	2 Years	3 Years	4 Years	5 Years	6-9 Years	10 Years	11-14 Years	15 Years	16-19 Years	20-24 Years	25-29 Years	30 Years	30+ Years
<b>Bayside Main</b>	901 100%	34 4%	23 3%	64 7%	171 19%	100 11%	163 18%	226 25%	14 2%	57 6%	14 2%	18 2%	6 1%	3 0%	8 1%	0 0%
<b>Bayside Farm</b>	408 100%	27 7%	24 6%	30 7%	68 17%	23 6%	43 11%	84 21%	15 4%	57 14%	16 4%	9 2%	6 1%	0 0%	6 1%	0 0%
<b>Bayside Ancora</b>	166 100%	30 18%	16 10%	23 14%	52 31%	18 11%	19 11%	8 5%	0 0%	0 0%	0 0%	0 0%	0 0%	0 0%	0 0%	0 0%
<b>Bayside Total</b>	1,475 100%	91 6%	63 4%	117 8%	291 20%	141 10%	225 15%	318 22%	29 2%	114 8%	30 2%	27 2%	12 1%	3 0%	14 1%	0 0%
<b>CRAF Jones Farm</b>	66 100%	17 26%	10 15%	22 33%	16 24%	1 2%	0 0%	0 0%	0 0%	0 0%	0 0%	0 0%	0 0%	0 0%	0 0%	0 0%
<b>CRAF Reception</b>	287 100%	44 15%	15 5%	32 11%	94 33%	21 7%	37 13%	30 10%	2 1%	7 2%	1 0%	1 0%	3 1%	0 0%	0 0%	0 0%
<b>CRAF Total</b>	353 100%	61 17%	25 7%	54 15%	110 31%	22 6%	37 10%	30 8%	2 1%	7 2%	1 0%	1 0%	3 1%	0 0%	0 0%	0 0%
<b>East Jersey Main</b>	1,293 100%	2 0%	2 0%	7 1%	17 1%	6 0%	45 3%	161 12%	25 2%	250 19%	56 4%	212 16%	131 10%	78 6%	215 17%	86 7%
<b>East Jersey Camp</b>	66 100%	4 6%	2 3%	5 8%	10 15%	3 5%	8 12%	14 21%	1 2%	18 27%	1 2%	0 0%	0 0%	0 0%	0 0%	0 0%
<b>East Jersey Total</b>	1,359 100%	6 0%	4 0%	12 1%	27 2%	9 1%	53 4%	175 13%	26 2%	268 20%	57 4%	212 16%	131 10%	78 6%	215 16%	86 6%

### Prison Complex Offenders By Mandatory Minimum Term

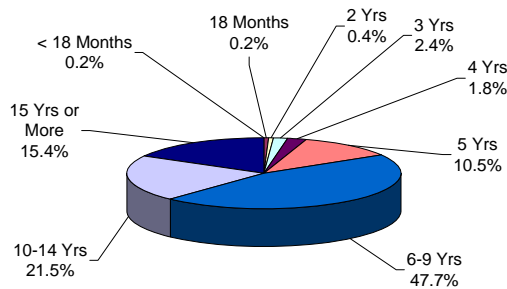
Institution	Total	< 18 Months	18 Months	2 Years	3 Years	4 Years	5 Years	6-9 Years	10 Years	11-14 Years	15 Years	16-19 Years	20-24 Years	25-29 Years	30 Years	30+ Years
Midstate	304 100%	23 8%	18 6%	27 9%	89 29%	22 7%	52 17%	64 21%	3 1%	5 2%	0 0%	0 0%	1 0%	0 0%	0 0%	0 0%
NJ State Prison Ad Seg Female	21 100%	0 0%	1 0%	0 0%	2 0%	1 0%	5 0%	9 1%	0 0%	2 0%	0 0%	1 0%	0 0%	0 0%	0 0%	0 0%
NJ State Prison Main	1,716 100%	17 1%	12 1%	19 1%	35 2%	17 1%	43 2%	103 6%	9 1%	68 4%	23 1%	73 4%	92 5%	177 10%	347 20%	681 39%
NJ State Prison Total	1,737 100%	17 1%	13 1%	19 1%	37 2%	18 1%	48 3%	112 6%	9 1%	70 4%	23 1%	74 4%	92 5%	177 10%	347 20%	681 39%
Northern Main	1,807 100%	45 2%	44 2%	72 4%	224 12%	94 5%	159 9%	413 23%	38 2%	282 16%	56 3%	143 8%	74 4%	35 2%	109 6%	19 1%
Northern Ad Seg Male	454 100%	21 5%	15 3%	32 7%	66 15%	18 4%	62 14%	116 26%	10 2%	45 10%	6 1%	32 7%	19 4%	4 1%	5 1%	3 1%
Northern Total	2,261 100%	66 3%	59 3%	104 5%	290 13%	112 5%	221 10%	529 23%	48 2%	327 14%	62 3%	175 8%	93 4%	39 2%	114 5%	22 1%
Southern	1,399 100%	92 7%	87 6%	163 12%	411 29%	142 10%	190 14%	238 17%	12 1%	46 3%	4 0%	10 1%	0 0%	3 0%	1 0%	0 0%
South Woods	2,680 100%	60 2%	49 2%	81 3%	293 11%	129 5%	272 10%	690 26%	58 2%	424 16%	84 3%	247 9%	98 4%	48 2%	115 4%	32 1%
<b>SUBTOTAL PRISON MALES</b>	<b>11,568 100%</b>	<b>416 4%</b>	<b>318 3%</b>	<b>577 5%</b>	<b>1,548 13%</b>	<b>595 5%</b>	<b>1,098 9%</b>	<b>2,156 19%</b>	<b>187 2%</b>	<b>1,261 11%</b>	<b>261 2%</b>	<b>746 6%</b>	<b>430 4%</b>	<b>348 3%</b>	<b>806 7%</b>	<b>821 7%</b>



## Prison Complex Offenders By Mandatory Minimum Term

Institution	Total	< 18 Months	18 Months	2 Years	3 Years	4 Years	5 Years	6-9 Years	10 Years	11-14 Years	15 Years	16-19 Years	20-24 Years	25-29 Years	30 Years	30+ Years
ADTC	545 100%	1 0%	1 0%	2 0%	13 2%	10 2%	57 10%	260 48%	23 4%	94 17%	23 4%	28 5%	13 2%	12 2%	4 1%	4 1%
<b>Subtotal</b>	<b>12,113</b> <b>100%</b>	<b>417</b> <b>3%</b>	<b>319</b> <b>3%</b>	<b>579</b> <b>5%</b>	<b>1,561</b> <b>13%</b>	<b>605</b> <b>5%</b>	<b>1,155</b> <b>10%</b>	<b>2,416</b> <b>20%</b>	<b>210</b> <b>2%</b>	<b>1,355</b> <b>11%</b>	<b>284</b> <b>2%</b>	<b>774</b> <b>6%</b>	<b>443</b> <b>4%</b>	<b>360</b> <b>3%</b>	<b>810</b> <b>7%</b>	<b>825</b> <b>7%</b>
Mahan - Female Prison	489 100%	23 5%	9 2%	24 5%	68 14%	26 5%	65 13%	92 19%	3 1%	59 12%	12 2%	36 7%	14 3%	5 1%	35 7%	18 4%
<b>Total Prison Complex</b>	<b>12,602</b> <b>100%</b>	<b>440</b> <b>3%</b>	<b>328</b> <b>3%</b>	<b>603</b> <b>5%</b>	<b>1,629</b> <b>13%</b>	<b>631</b> <b>5%</b>	<b>1,220</b> <b>10%</b>	<b>2,508</b> <b>20%</b>	<b>213</b> <b>2%</b>	<b>1,414</b> <b>11%</b>	<b>296</b> <b>2%</b>	<b>810</b> <b>6%</b>	<b>457</b> <b>4%</b>	<b>365</b> <b>3%</b>	<b>845</b> <b>7%</b>	<b>843</b> <b>7%</b>

### ADTC

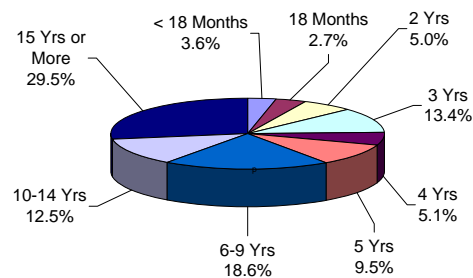


The median mandatory minimum term at ADTC is 8 years 4 months.

Seventy-eight percent (78%) of the ADTC population have mandatory minimum sentences (545 of 700).

Thirty-seven percent (37%) have mandatory minimum terms of 10 years or longer.

### PRISON MALES

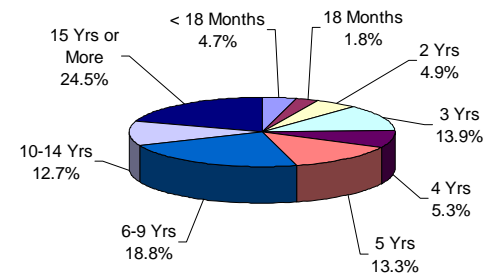


Of the 15,882 prison complex males, 73% (11,568) have mandatory minimum terms.

The median mandatory minimum term for prison complex males is 6 years (ADTC excluded).

Eighty-nine percent (89%) of New Jersey State Prison inmates have mandatory minimum terms and 79% percent of those have minimum terms of 15 years or more.

### FEMALE FACILITIES



The median mandatory minimum term at Edna Mahan is 6 years.

At Edna Mahan, 59% of the females housed have minimum terms (489 of 825).

Forty-four percent (44%) of the females with mandatory minimum terms have terms of 5 years or less.

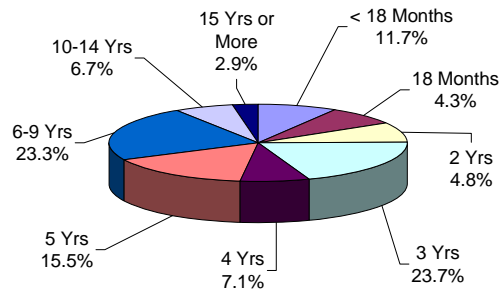
### Youth Complex Offenders By Mandatory Minimum Term

Institution	Total	< 18 Months	18 Months	2 Years	3 Years	4 Years	5 Years	6-9 Years	10 Years	11-14 Years	15 Years	16-19 Years	20-24 Years	25-29 Years	30 Years	30+ Years
Garden State	1,400 100%	108 8%	46 3%	65 5%	314 22%	108 8%	230 16%	365 26%	12 1%	93 7%	12 1%	37 3%	7 1%	2 0%	1 0%	0 0%
Mountainview	748 100%	164 22%	44 6%	50 7%	239 32%	58 8%	96 13%	96 13%	0 0%	0 0%	0 0%	1 0%	0 0%	0 0%	0 0%	0 0%
Wagner Main	663 100%	51 8%	27 4%	25 4%	117 18%	41 6%	103 16%	192 29%	12 2%	74 11%	2 0%	13 2%	5 1%	1 0%	0 0%	0 0%
Wagner Ad Seg	210 100%	24 11%	7 3%	5 2%	44 21%	12 6%	44 21%	49 23%	1 0%	13 6%	1 0%	7 3%	2 1%	0 0%	1 0%	0 0%
Wagner Minimum Units	112 100%	18 16%	11 10%	5 4%	30 27%	2 2%	13 12%	29 26%	0 0%	4 4%	0 0%	0 0%	0 0%	0 0%	0 0%	0 0%
Wagner Total	985 100%	93 9%	45 5%	35 4%	191 19%	55 6%	160 16%	270 27%	13 1%	91 9%	3 0%	20 2%	7 1%	1 0%	1 0%	0 0%
<b>Total Youth</b>	<b>3,133 100%</b>	<b>365 12%</b>	<b>135 4%</b>	<b>150 5%</b>	<b>744 24%</b>	<b>221 7%</b>	<b>486 16%</b>	<b>731 23%</b>	<b>25 1%</b>	<b>184 6%</b>	<b>15 0%</b>	<b>58 2%</b>	<b>14 0%</b>	<b>3 0%</b>	<b>2 0%</b>	<b>0 0%</b>

## Offenders In Other Facilities By Mandatory Minimum Term

Institution	Total	< 18 Months	18 Months	2 Years	3 Years	4 Years	5 Years	6-9 Years	10 Years	11-14 Years	15 Years	16-19 Years	20-24 Years	25-29 Years	30 Years	30+ Years
Central Medical	8	0	0	0	1	0	1	3	0	1	1	0	1	0	0	0
	100%	0%	0%	0%	13%	0%	13%	38%	0%	13%	13%	0%	13%	0%	0%	0%
County Jail	24	3	1	4	4	1	3	6	1	1	0	0	0	0	0	0
	100%	13%	4%	17%	17%	4%	13%	25%	4%	4%	0%	0%	0%	0%	0%	0%
Halfway House	2,108	222	123	290	696	219	245	235	12	45	11	4	5	1	0	0
	100%	11%	6%	14%	33%	10%	12%	11%	1%	2%	1%	0%	0%	0%	0%	0%
<b>Total Other Facilities</b>	<b>2,140</b>	<b>225</b>	<b>124</b>	<b>294</b>	<b>701</b>	<b>220</b>	<b>249</b>	<b>244</b>	<b>13</b>	<b>47</b>	<b>12</b>	<b>4</b>	<b>6</b>	<b>1</b>	<b>0</b>	<b>0</b>
	<b>100%</b>	<b>11%</b>	<b>6%</b>	<b>14%</b>	<b>33%</b>	<b>10%</b>	<b>12%</b>	<b>11%</b>	<b>1%</b>	<b>2%</b>	<b>1%</b>	<b>0%</b>	<b>0%</b>	<b>0%</b>	<b>0%</b>	<b>0%</b>

### YOUTH COMPLEX

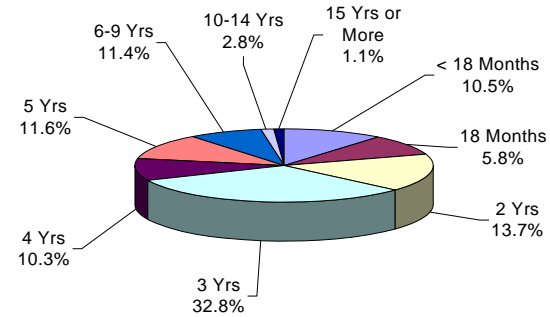


The median mandatory minimum term for youth complex offenders is 4 years.

Among youth complex offenders, 72% have mandatory minimum terms (3,133 of 4,353).

Of these, 67% have mandatory minimum terms of 5 years or less.

### OFFENDERS IN OTHER FACILITIES



The median mandatory minimum term for inmates in 'other facilities' is 3 years.

Sixty-three percent (63%) of the offenders in 'other facilities' have mandatory minimum terms (2,140 of 3,379).

Of these, 85% have mandatory minimum terms of 5 years or less.

***AGE GROUP***

**OFFENDERS IN NEW JERSEY CORRECTIONAL INSTITUTIONS  
ON JANUARY 1, 2011, BY AGE**

The age of the offender is the chronological age as of January 1, 2011.

**OFFENDERS IN CORRECTIONAL INSTITUTIONS BY AGE**

Age	Total		Prison Males		Youth Complex		ADTC		Edna Mahan		Other Facilities	
	#	%	#	%	#	%	#	%	#	%	#	%
TOTAL OFFENDERS	25,139	100%	15,882	100%	4,353	100%	700	100%	825	100%	3,379	100%
< 17 Years	1	0%	0	0%	0	0%	0	0%	1	0%	0	0%
17 Years	5	0%	0	0%	4	0%	0	0%	1	0%	0	0%
18-20 Years	707	3%	59	0%	583	13%	8	1%	10	1%	47	1%
21-22 Years	1,614	6%	295	2%	1,123	26%	8	1%	37	4%	151	4%
23-24 Years	1,804	7%	539	3%	1,022	23%	19	3%	47	6%	177	5%
25-27 Years	2,953	12%	1,352	9%	1,190	27%	26	4%	70	8%	315	9%
28-30 Years	2,835	11%	1,950	12%	398	9%	36	5%	103	12%	348	10%
31-33 Years	2,618	10%	2,096	13%	28	1%	45	6%	84	10%	365	11%
34-36 Years	2,103	8%	1,666	10%	2	0%	45	6%	71	9%	319	9%
37-39 Years	2,031	8%	1,618	10%	1	0%	57	8%	70	8%	285	8%
40-44 Years	2,939	12%	2,309	15%	1	0%	96	14%	118	14%	415	12%
45-49 Years	2,344	9%	1,803	11%	1	0%	122	17%	112	14%	306	9%
50-54 Years	1,429	6%	1,118	7%	0	0%	83	12%	64	8%	164	5%
55-59 Years	703	3%	567	4%	0	0%	64	9%	16	2%	56	2%
60-64 Years	374	1%	296	2%	0	0%	44	6%	12	1%	22	1%
65+ Years	282	1%	214	1%	0	0%	47	7%	9	1%	12	0%
Not Coded	397	2%	0	0%	0	0%	0	0%	0	0%	397	12%

- The median age for adult inmates is 33 years.
- Three percent (3%) of all adult offenders are 20 years of age or younger.
- Thirty-six percent (36%) of all adult offenders are between the ages of 21-30.
- Twenty-six percent (26%) of all adult offenders are 31 to 39 years of age.
- Thirty-two percent (32%) of all adult offenders are 40 years of age and older.

### Prison Complex Offenders By Age

Institution	Total	< 17 Years	17 Years	18-20 Years	21-22 Years	23-24 Years	25-27 Years	28-30 Years	31-33 Years	34-36 Years	37-39 Years	40-44 Years	45-49 Years	50-54 Years	55-59 Years	60-64 Years	65+ Years	Unspec
<b>Bayside</b>	1,333	0	0	2	20	37	113	190	222	153	153	193	131	71	29	14	5	0
<b>  Main</b>	100%	0%	0%	0%	2%	3%	8%	14%	17%	11%	11%	14%	10%	5%	2%	1%	0%	0%
<b>Bayside</b>	659	0	0	0	4	11	27	81	73	75	72	121	107	61	18	7	2	0
<b>  Farm</b>	100%	0%	0%	0%	1%	2%	4%	12%	11%	11%	11%	18%	16%	9%	3%	1%	0%	0%
<b>Bayside</b>	298	0	0	0	8	12	22	38	36	43	45	47	31	11	4	1	0	0
<b>  Ancora</b>	100%	0%	0%	0%	3%	4%	7%	13%	12%	14%	15%	16%	10%	4%	1%	0%	0%	0%
<b>Bayside Total</b>	2,290	0	0	2	32	60	162	309	331	271	270	361	269	143	51	22	7	0
	100%	0%	0%	0%	1%	3%	7%	13%	14%	12%	12%	16%	12%	6%	2%	1%	0%	0%
<b>CRAF</b>	269	0	0	0	1	8	25	43	34	29	19	46	32	19	11	2	0	0
<b>  Jones Farm</b>	100%	0%	0%	0%	0%	3%	9%	16%	13%	11%	7%	17%	12%	7%	4%	1%	0%	0%
<b>CRAF</b>	606	0	0	16	30	41	63	78	87	49	69	71	51	29	10	9	3	0
<b>  Reception</b>	100%	0%	0%	3%	5%	7%	10%	13%	14%	8%	11%	12%	8%	5%	2%	1%	0%	0%
<b>CRAF Total</b>	875	0	0	16	31	49	88	121	121	78	88	117	83	48	21	11	3	0
	100%	0%	0%	2%	4%	6%	10%	14%	14%	9%	10%	13%	9%	5%	2%	1%	0%	0%
<b>East Jersey</b>	1,369	0	0	3	3	16	83	147	158	168	133	199	180	138	67	37	37	0
<b>  Main</b>	100%	0%	0%	0%	0%	1%	6%	11%	12%	12%	10%	15%	13%	10%	5%	3%	3%	0%
<b>East Jersey</b>	111	0	0	0	0	0	5	9	16	10	10	24	23	12	1	1	0	0
<b>  Camp</b>	100%	0%	0%	0%	0%	0%	5%	8%	14%	9%	9%	22%	21%	11%	1%	1%	0%	0%
<b>East Jersey Total</b>	1,480	0	0	3	3	16	88	156	174	178	143	223	203	150	68	38	37	0
	100%	0%	0%	0%	0%	1%	6%	11%	12%	12%	10%	15%	14%	10%	5%	3%	3%	0%

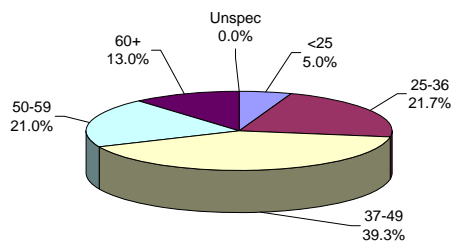
### Prison Complex Offenders By Age

Institution	Total	< 17 Years	17 Years	18-20 Years	21-22 Years	23-24 Years	25-27 Years	28-30 Years	31-33 Years	34-36 Years	37-39 Years	40-44 Years	45-49 Years	50-54 Years	55-59 Years	60-64 Years	65+ Years	Unspec
Midstate	697	0	0	2	4	15	44	66	81	75	75	121	109	58	32	12	3	0
	100%	0%	0%	0%	1%	2%	6%	9%	12%	11%	11%	17%	16%	8%	5%	2%	0%	0%
NJ State Prison Ad Seg Female	30	0	0	2	4	4	4	7	1	3	0	3	0	2	0	0	0	0
	100%	0%	0%	7%	13%	13%	13%	23%	3%	10%	0%	10%	0%	7%	0%	0%	0%	0%
NJ State Prison Main	1,921	0	0	4	39	81	168	155	196	177	224	268	241	155	100	61	52	0
	100%	0%	0%	0%	2%	4%	9%	8%	10%	9%	11%	14%	12%	8%	5%	3%	3%	0%
NJ State Prison Total	1,951	0	0	6	43	85	172	162	197	180	224	271	241	157	100	61	52	0
	100%	0%	0%	0%	2%	4%	9%	8%	10%	9%	11%	14%	12%	8%	5%	3%	3%	0%
Northern Main	2,301	0	0	6	36	70	170	274	339	256	253	353	227	164	81	45	27	0
	100%	0%	0%	0%	2%	3%	7%	12%	15%	11%	11%	15%	10%	7%	4%	2%	1%	0%
Northern Ad Seg Male	599	0	0	5	56	68	101	94	87	44	48	52	21	13	6	3	1	0
	100%	0%	0%	1%	9%	11%	17%	16%	15%	7%	8%	9%	4%	2%	1%	1%	0%	0%
Northern Total	2,900	0	0	11	92	138	271	368	426	300	301	405	248	177	87	48	28	0
	100%	0%	0%	0%	3%	5%	9%	13%	15%	10%	10%	14%	9%	6%	3%	2%	1%	0%
Southern	2,315	0	0	2	23	61	209	341	362	267	212	368	249	134	55	23	9	0
	100%	0%	0%	0%	1%	3%	9%	15%	16%	12%	9%	16%	11%	6%	2%	1%	0%	0%
South Woods	3,374	0	0	17	67	115	318	427	404	317	305	443	401	251	153	81	75	0
	100%	0%	0%	1%	2%	3%	9%	13%	12%	9%	9%	13%	12%	7%	5%	2%	2%	0%
<b>SUBTOTAL PRISON MALES</b>	<b>15,882</b>	<b>0</b>	<b>0</b>	<b>59</b>	<b>295</b>	<b>539</b>	<b>1,352</b>	<b>1,950</b>	<b>2,096</b>	<b>1,666</b>	<b>1,618</b>	<b>2,309</b>	<b>1,803</b>	<b>1,118</b>	<b>567</b>	<b>296</b>	<b>214</b>	<b>0</b>
	<b>100%</b>	<b>0%</b>	<b>0%</b>	<b>0%</b>	<b>2%</b>	<b>3%</b>	<b>9%</b>	<b>12%</b>	<b>13%</b>	<b>10%</b>	<b>10%</b>	<b>15%</b>	<b>11%</b>	<b>7%</b>	<b>4%</b>	<b>2%</b>	<b>1%</b>	<b>0%</b>

## Prison Complex Offenders By Age

Institution	Total	< 17 Years	17 Years	18-20 Years	21-22 Years	23-24 Years	25-27 Years	28-30 Years	31-33 Years	34-36 Years	37-39 Years	40-44 Years	45-49 Years	50-54 Years	55-59 Years	60-64 Years	65+ Years	Unspec
ADTC	700 100%	0 0%	0 0%	8 1%	8 1%	19 3%	26 4%	36 5%	45 6%	45 6%	57 8%	96 14%	122 17%	83 12%	64 9%	44 6%	47 7%	0 0%
<b>Subtotal</b>	<b>16,582</b> <b>100%</b>	<b>0</b> <b>0%</b>	<b>0</b> <b>0%</b>	<b>67</b> <b>0%</b>	<b>303</b> <b>2%</b>	<b>558</b> <b>3%</b>	<b>1,378</b> <b>8%</b>	<b>1,986</b> <b>12%</b>	<b>2,141</b> <b>13%</b>	<b>1,711</b> <b>10%</b>	<b>1,675</b> <b>10%</b>	<b>2,405</b> <b>15%</b>	<b>1,925</b> <b>12%</b>	<b>1,201</b> <b>7%</b>	<b>631</b> <b>4%</b>	<b>340</b> <b>2%</b>	<b>261</b> <b>2%</b>	<b>0</b> <b>0%</b>
Mahan - Female Prison	825 100%	1 0%	1 0%	10 1%	37 4%	47 6%	70 8%	103 12%	84 10%	71 9%	70 8%	118 14%	112 14%	64 8%	16 2%	12 1%	9 1%	0 0%
<b>Total Prison Complex</b>	<b>17,407</b> <b>100%</b>	<b>1</b> <b>0%</b>	<b>1</b> <b>0%</b>	<b>77</b> <b>0%</b>	<b>340</b> <b>2%</b>	<b>605</b> <b>3%</b>	<b>1,448</b> <b>8%</b>	<b>2,089</b> <b>12%</b>	<b>2,225</b> <b>13%</b>	<b>1,782</b> <b>10%</b>	<b>1,745</b> <b>10%</b>	<b>2,523</b> <b>14%</b>	<b>2,037</b> <b>12%</b>	<b>1,265</b> <b>7%</b>	<b>647</b> <b>4%</b>	<b>352</b> <b>2%</b>	<b>270</b> <b>2%</b>	<b>0</b> <b>0%</b>

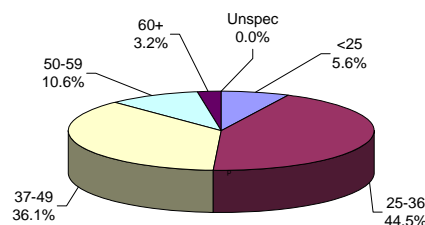
**ADTC**



The median age at ADTC is 45 years.

Thirty-four percent (34%) of the ADTC offenders are 50 years of age or older. This may be compared with 14% of male prison complex offenders and 12% of female (Edna Mahan) offenders.

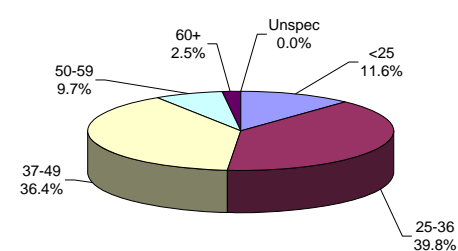
**PRISON MALES**



The median age for prison complex males (excluding ADTC) is 36 years.

Forty-five percent (45%) of the male prison complex population are age 25 to 36.

**FEMALE FACILITIES**



The median age for female inmates (Edna Mahan) is 36 years.

Forty percent (40%) of the women at Edna Mahan are age 25 to 36.



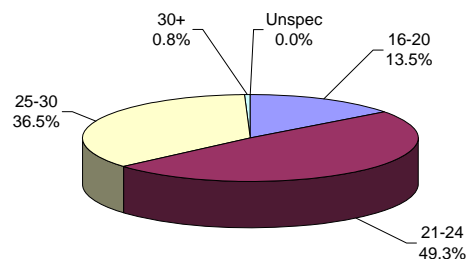
### Youth Complex Offenders By Age

Institution	Total	< 17 Years	17 Years	18-20 Years	21-22 Years	23-24 Years	25-27 Years	28-30 Years	31-33 Years	34-36 Years	37-39 Years	40-44 Years	45-49 Years	50-54 Years	55-59 Years	60-64 Years	65+ Years	Unspec
<b>Garden State</b>	1,864 100%	0 0%	3 0%	215 12%	429 23%	437 23%	555 30%	203 11%	18 1%	2 0%	1 0%	0 0%	1 0%	0 0%	0 0%	0 0%	0 0%	0 0%
<b>Mountainview</b>	1,154 100%	0 0%	0 0%	202 18%	323 28%	268 23%	294 25%	63 5%	3 0%	0 0%	0 0%	1 0%	0 0%	0 0%	0 0%	0 0%	0 0%	0 0%
<b>Wagner Main</b>	887 100%	0 0%	0 0%	101 11%	236 27%	215 24%	244 28%	87 10%	4 0%	0 0%	0 0%	0 0%	0 0%	0 0%	0 0%	0 0%	0 0%	0 0%
<b>Wagner Ad Seg</b>	282 100%	0 0%	1 0%	56 20%	100 35%	66 23%	41 15%	17 6%	1 0%	0 0%	0 0%	0 0%	0 0%	0 0%	0 0%	0 0%	0 0%	0 0%
<b>Wagner Minimum Units</b>	166 100%	0 0%	0 0%	9 5%	35 21%	36 22%	56 34%	28 17%	2 1%	0 0%	0 0%	0 0%	0 0%	0 0%	0 0%	0 0%	0 0%	0 0%
<b>Wagner Total</b>	1,335 100%	0 0%	1 0%	166 12%	371 28%	317 24%	341 26%	132 10%	7 1%	0 0%	0 0%	0 0%	0 0%	0 0%	0 0%	0 0%	0 0%	0 0%
<b>Total Youth</b>	<b>4,353 100%</b>	<b>0 0%</b>	<b>4 0%</b>	<b>583 13%</b>	<b>1,123 26%</b>	<b>1,022 23%</b>	<b>1,190 27%</b>	<b>398 9%</b>	<b>28 1%</b>	<b>2 0%</b>	<b>1 0%</b>	<b>1 0%</b>	<b>1 0%</b>	<b>0 0%</b>	<b>0 0%</b>	<b>0 0%</b>	<b>0 0%</b>	<b>0 0%</b>

### Offenders In Other Facilities By Age

Institution	Total	< 17 Years	17 Years	18-20 Years	21-22 Years	23-24 Years	25-27 Years	28-30 Years	31-33 Years	34-36 Years	37-39 Years	40-44 Years	45-49 Years	50-54 Years	55-59 Years	60-64 Years	65+ Years	Unspec
Central Medical	10	0	0	0	0	0	2	0	0	0	0	1	3	3	1	0	0	0
	100%	0%	0%	0%	0%	0%	20%	0%	0%	0%	0%	10%	30%	30%	10%	0%	0%	0%
County Jail	529	0	0	5	13	12	15	18	18	9	6	11	11	6	3	4	1	397
	100%	0%	0%	1%	2%	2%	3%	3%	3%	2%	1%	2%	2%	1%	1%	1%	0%	75%
Halfway House	2,840	0	0	42	138	165	298	330	347	310	279	403	292	155	52	18	11	0
	100%	0%	0%	1%	5%	6%	10%	12%	12%	11%	10%	14%	10%	5%	2%	1%	0%	0%
<b>Total Other Facilities</b>	<b>3,379</b>	<b>0</b>	<b>0</b>	<b>47</b>	<b>151</b>	<b>177</b>	<b>315</b>	<b>348</b>	<b>365</b>	<b>319</b>	<b>285</b>	<b>415</b>	<b>306</b>	<b>164</b>	<b>56</b>	<b>22</b>	<b>12</b>	<b>397</b>
	<b>100%</b>	<b>0%</b>	<b>0%</b>	<b>1%</b>	<b>4%</b>	<b>5%</b>	<b>9%</b>	<b>10%</b>	<b>11%</b>	<b>9%</b>	<b>8%</b>	<b>12%</b>	<b>9%</b>	<b>5%</b>	<b>2%</b>	<b>1%</b>	<b>0%</b>	<b>12%</b>

#### YOUTH COMPLEX

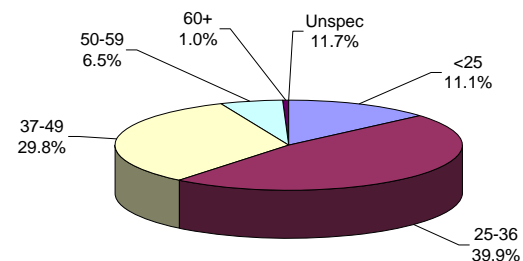


The median age for the youth complex is 23 years.

Eighty-six percent (86%) of all youth complex inmates are between the ages of 21 and 30.

Sixty-three percent (63%) are less than 25 years of age.

#### OFFENDERS IN OTHER FACILITIES



The median age for offenders in 'other facilities' is 34 years.

The median age for offenders housed in county jail is 31 years; while offenders in halfway houses have a median age of 35 years.

***RACE/ETHNIC IDENTIFICATION***

**OFFENDERS IN NEW JERSEY CORRECTIONAL INSTITUTIONS  
ON JANUARY 1, 2011, BY RACE/ETHNIC IDENTIFICATION**

In these tabulations, a Hispanic is a person of Mexican, Puerto Rican, Cuban, South American or other Spanish culture or origin (Spain or Portugal) regardless of complexion.

**OFFENDERS IN CORRECTIONAL INSTITUTIONS BY RACE/ETHNIC IDENTIFICATION**

Ethnic Identification	Total		Prison Males		Youth Complex		ADTC		Edna Mahan		Other Facilities	
	#	%	#	%	#	%	#	%	#	%	#	%
TOTAL OFFENDERS	25,139	100%	15,882	100%	4,353	100%	700	100%	825	100%	3,379	100%
Black	15,236	61%	9,836	62%	2,811	65%	158	23%	430	52%	2,001	59%
White	5,158	21%	3,238	20%	750	17%	355	51%	283	34%	532	16%
Hispanic	4,203	17%	2,718	17%	767	18%	180	26%	103	12%	435	13%
Asian	135	0%	84	1%	23	1%	7	1%	9	1%	12	0%
American Indian	7	0%	5	0%	0	0%	0	0%	0	0%	2	0%
Other or Unspecified	400	2%	1	0%	2	0%	0	0%	0	0%	397	12%

- Sixty-one (61%) percent of all state correctional institution offenders were Black, 21% were White and 17% were Hispanic.

### Prison Complex Offenders By Race/Ethnic Identification

Institution	Total	Black	White	Hispanic	Asian	American Indian	Other or Unspecified
<b>Bayside Main</b>	1,333 100%	865 65%	257 19%	203 15%	8 1%	0 0%	0 0%
<b>Bayside Farm</b>	659 100%	410 62%	148 22%	99 15%	2 0%	0 0%	0 0%
<b>Bayside Ancora</b>	298 100%	209 70%	49 16%	40 13%	0 0%	0 0%	0 0%
<b>Bayside Total</b>	2,290 100%	1,484 65%	454 20%	342 15%	10 0%	0 0%	0 0%
<b>CRAF Jones Farm</b>	269 100%	112 42%	121 45%	35 13%	1 0%	0 0%	0 0%
<b>CRAF Reception</b>	606 100%	356 59%	137 23%	107 18%	6 1%	0 0%	0 0%
<b>CRAF Total</b>	875 100%	468 53%	258 29%	142 16%	7 1%	0 0%	0 0%
<b>East Jersey Main</b>	1,369 100%	912 67%	210 15%	245 18%	2 0%	0 0%	0 0%
<b>East Jersey Camp</b>	111 100%	78 70%	24 22%	8 7%	1 1%	0 0%	0 0%
<b>East Jersey Total</b>	1,480 100%	990 67%	234 16%	253 17%	3 0%	0 0%	0 0%

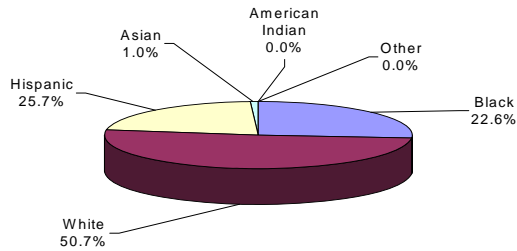
### Prison Complex Offenders By Race/Ethnic Identification

Institution	Total	Black	White	Hispanic	Asian	American Indian	Other or Unspecified
Midstate	697 100%	331 47%	210 30%	148 21%	7 1%	1 0%	0 0%
NJ State Prison Ad Seg Female	30 100%	26 1%	3 0%	1 0%	0 0%	0 0%	0 0%
NJ State Prison Main	1,921 100%	1,258 64%	371 19%	277 14%	15 1%	0 0%	0 0%
NJ State Prison Total	1,951 100%	1,284 66%	374 19%	278 14%	15 1%	0 0%	0 0%
Northern Main	2,301 100%	1,490 65%	298 13%	501 22%	12 1%	0 0%	0 0%
Northern Ad Seg Male	599 100%	422 70%	72 12%	102 17%	2 0%	1 0%	0 0%
Northern Total	2,900 100%	1,912 66%	370 13%	603 21%	14 0%	1 0%	0 0%
Southern	2,315 100%	1,414 61%	541 23%	350 15%	10 0%	0 0%	0 0%
South Woods	3,374 100%	1,953 58%	797 24%	602 18%	18 1%	3 0%	1 0%
<b>SUBTOTAL PRISON MALES</b>	<b>15,882 100%</b>	<b>9,836 62%</b>	<b>3,238 20%</b>	<b>2,718 17%</b>	<b>84 1%</b>	<b>5 0%</b>	<b>1 0%</b>

## Prison Complex Offenders By Race/Ethnic Identification

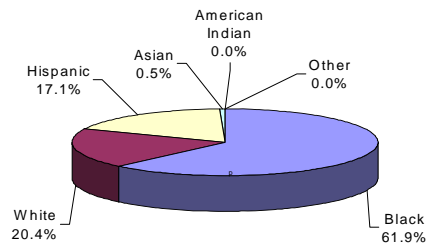
Institution	Total	Black	White	Hispanic	Asian	American Indian	Other or Unspecified
ADTC	700 100%	158 23%	355 51%	180 26%	7 1%	0 0%	0 0%
<b>Subtotal</b>	<b>16,582</b> <b>100%</b>	<b>9,994</b> <b>60%</b>	<b>3,593</b> <b>22%</b>	<b>2,898</b> <b>17%</b>	<b>91</b> <b>1%</b>	<b>5</b> <b>0%</b>	<b>1</b> <b>0%</b>
Mahan - Female Prison	825 100%	430 52%	283 34%	103 12%	9 1%	0 0%	0 0%
<b>Total Prison Complex</b>	<b>17,407</b> <b>100%</b>	<b>10,424</b> <b>60%</b>	<b>3,876</b> <b>22%</b>	<b>3,001</b> <b>17%</b>	<b>100</b> <b>1%</b>	<b>5</b> <b>0%</b>	<b>1</b> <b>0%</b>

### ADTC



White offenders comprised 51% of the offenders at ADTC.

### PRISON MALES

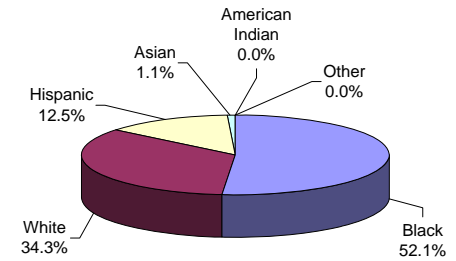


The largest proportion of Black male offenders in a major facility was at East Jersey State Prison (67%).

The largest proportion of White male offenders at a major facility was at Midstate Correctional Facility (30%).

The largest proportion of Hispanic male offenders at a major facility was at Midstate and Northern (21%).

### FEMALE FACILITIES



Black offenders comprised 52% of the population at Edna Mahan. This may be compared with Black offenders comprising 62% of prison complex males.

### Youth Complex Offenders By Race/Ethnic Identification

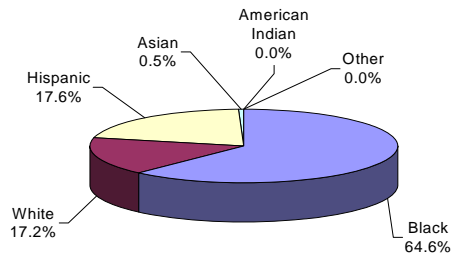
Institution	Total	Black	White	Hispanic	Asian	American Indian	Other or Unspecified
<b>Garden State</b>	1,864 100%	1,170 63%	338 18%	344 18%	10 1%	0 0%	2 0%
<b>Mountainview</b>	1,154 100%	693 60%	260 23%	190 16%	11 1%	0 0%	0 0%
<b>Wagner Main</b>	887 100%	628 71%	103 12%	154 17%	2 0%	0 0%	0 0%
<b>Wagner Ad Seg</b>	282 100%	197 70%	28 10%	57 20%	0 0%	0 0%	0 0%
<b>Wagner Minimum Units</b>	166 100%	123 74%	21 13%	22 13%	0 0%	0 0%	0 0%
<b>Wagner Total</b>	1,335 100%	948 71%	152 11%	233 17%	2 0%	0 0%	0 0%
<b>Total Youth</b>	<b>4,353</b> <b>100%</b>	<b>2,811</b> <b>65%</b>	<b>750</b> <b>17%</b>	<b>767</b> <b>18%</b>	<b>23</b> <b>1%</b>	<b>0</b> <b>0%</b>	<b>2</b> <b>0%</b>



## Offenders In Other Facilities By Race/Ethnic Identification

Institution	Total	Black	White	Hispanic	Asian	American Indian	Other or Unspecified
Central Medical	10 100%	7 70%	2 20%	1 10%	0 0%	0 0%	0 0%
County Jail	529 100%	76 14%	39 7%	17 3%	0 0%	0 0%	397 75%
Halfway House	2,840 100%	1,918 68%	491 17%	417 15%	12 0%	2 0%	0 0%
<b>Total Other Facilities</b>	<b>3,379 100%</b>	<b>2,001 59%</b>	<b>532 16%</b>	<b>435 13%</b>	<b>12 0%</b>	<b>2 0%</b>	<b>397 12%</b>

### YOUTH COMPLEX

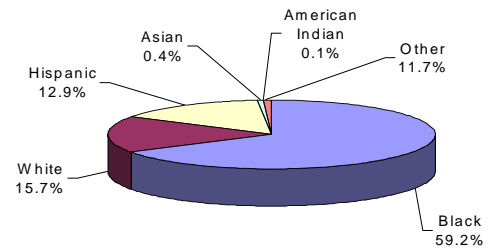


The largest proportion of Black offenders in the youth complex facilities was housed at Wagner (71%).

The largest proportion of White offenders in the youth complex facilities was housed at Mountainview (23%).

The largest proportion of Hispanic offenders in the youth complex facilities was housed at Garden State (18%).

### OFFENDERS IN OTHER FACILITIES



Race and ethnicity for inmates assigned to 'other facilities' was roughly equivalent to that for the total adult inmate population.

***COUNTY OF COMMITMENT***

**OFFENDERS IN NEW JERSEY CORRECTIONAL INSTITUTIONS  
ON JANUARY 1, 2011, BY COUNTY OF COMMITMENT**

**OFFENDERS IN NEW JERSEY CORRECTIONAL INSTITUTIONS BY COUNTY OF COMMITMENT**

County of Commitment	Total		Prison Males		Youth Complex		ADTC		Edna Mahan		Other Facilities	
	#	%	#	%	#	%	#	%	#	%	#	%
TOTAL OFFENDERS	25,139	100%	15,882	100%	4,353	100%	700	100%	825	100%	3,379	100%
Atlantic	1,768	7%	1,123	7%	297	7%	34	5%	69	8%	245	7%
Bergen	907	4%	602	4%	130	3%	46	7%	40	5%	89	3%
Burlington	822	3%	505	3%	157	4%	34	5%	33	4%	93	3%
Camden	2,894	12%	1,821	11%	548	13%	61	9%	77	9%	387	11%
Cape May	448	2%	292	2%	66	2%	14	2%	22	3%	54	2%
Cumberland	698	3%	470	3%	105	2%	20	3%	11	1%	92	3%
Essex	3,843	15%	2,656	17%	643	15%	45	6%	86	10%	413	12%
Gloucester	445	2%	278	2%	76	2%	16	2%	24	3%	51	2%
Hudson	2,173	9%	1,378	9%	402	9%	41	6%	61	7%	291	9%
Hunterdon	145	1%	83	1%	29	1%	7	1%	7	1%	19	1%
Mercer	1,309	5%	850	5%	251	6%	25	4%	49	6%	134	4%
Middlesex	1,560	6%	975	6%	292	7%	66	9%	64	8%	163	5%
Monmouth	1,265	5%	795	5%	210	5%	45	6%	64	8%	151	4%
Morris	385	2%	240	2%	69	2%	22	3%	22	3%	32	1%
Ocean	867	3%	549	3%	142	3%	53	8%	39	5%	84	2%
Passaic	2,073	8%	1,251	8%	403	9%	71	10%	53	6%	295	9%
Salem	252	1%	149	1%	49	1%	14	2%	8	1%	32	1%
Somerset	440	2%	272	2%	83	2%	11	2%	13	2%	61	2%
Sussex	172	1%	101	1%	37	1%	9	1%	9	1%	16	0%
Union	1,985	8%	1,298	8%	327	8%	48	7%	58	7%	254	8%
Warren	176	1%	95	1%	34	1%	13	2%	9	1%	25	1%
Not Coded	512	2%	99	1%	3	0%	5	1%	7	1%	398	12%

- Essex County has the highest percentage of commitments at the prison complex (17%); and the youth complex (15%).
- Essex County has the highest percentage of commitments at Edna Mahan (10%).
- Passaic County has the highest percentage of commitments at ADTC (10%).
- Essex County has the highest percentage of commitments (12%) at other adult facilities.
- Two counties, Essex and Camden, combine to comprise roughly a third of total DOC commitments.

### Prison Complex Offenders By County Of Commitment

Institution	Total	Atl	Ber	Burl	Cam	Cape May	Cum	Ess	Glou	Hud	Hunt	Mer	Mid	Mon	Mor	Oc	Pas	Sal	Som	Sus	Un	War	Not Coded
<b>Bayside Main</b>	1,333 100%	100 8%	44 3%	46 3%	198 15%	31 2%	47 4%	202 15%	30 2%	120 9%	6 0%	62 5%	69 5%	66 5%	18 1%	44 3%	97 7%	14 1%	24 2%	5 0%	101 8%	8 1%	1 0%
<b>Bayside Farm</b>	659 100%	56 8%	20 3%	15 2%	108 16%	14 2%	22 3%	104 16%	13 2%	54 8%	4 1%	29 4%	32 5%	27 4%	3 0%	22 3%	56 8%	10 2%	10 2%	3 0%	52 8%	3 0%	2 0%
<b>Bayside Ancora</b>	298 100%	30 10%	7 2%	6 2%	51 17%	9 3%	7 2%	44 15%	5 2%	23 8%	0 0%	14 5%	17 6%	8 3%	4 1%	12 4%	30 10%	3 1%	5 2%	4 1%	18 6%	1 0%	0 0%
<b>Bayside Total</b>	2,290 100%	186 8%	71 3%	67 3%	357 16%	54 2%	76 3%	350 15%	48 2%	197 9%	10 0%	105 5%	118 5%	101 4%	25 1%	78 3%	183 8%	27 1%	39 2%	12 1%	171 7%	12 1%	3 0%
<b>CRAF Jones Farm</b>	269 100%	14 5%	12 4%	6 2%	38 14%	4 1%	9 3%	16 6%	3 1%	21 8%	1 0%	10 4%	22 8%	27 10%	8 3%	22 8%	20 7%	1 0%	4 1%	4 1%	22 8%	5 2%	0 0%
<b>CRAF Reception</b>	606 100%	34 6%	31 5%	24 4%	78 13%	11 2%	14 2%	77 13%	18 3%	56 9%	2 0%	25 4%	49 8%	28 5%	8 1%	19 3%	43 7%	10 2%	12 2%	11 2%	52 9%	1 0%	3 0%
<b>CRAF Total</b>	875 100%	48 5%	43 5%	30 3%	116 13%	15 2%	23 3%	93 11%	21 2%	77 9%	3 0%	35 4%	71 8%	55 6%	16 2%	41 5%	63 7%	11 1%	16 2%	15 2%	74 8%	6 1%	3 0%
<b>East Jersey Main</b>	1,369 100%	62 5%	52 4%	42 3%	111 8%	6 0%	29 2%	335 24%	16 1%	116 8%	7 1%	76 6%	74 5%	88 6%	18 1%	28 2%	118 9%	1 0%	26 2%	6 0%	138 10%	5 0%	15 1%
<b>East Jersey Camp</b>	111 100%	7 6%	2 2%	1 1%	3 3%	0 0%	0 0%	21 19%	0 0%	16 14%	1 1%	6 5%	9 8%	2 2%	2 2%	4 4%	22 20%	0 0%	3 3%	1 1%	11 10%	0 0%	0 0%
<b>East Jersey Total</b>	1,480 100%	69 5%	54 4%	43 3%	114 8%	6 0%	29 2%	356 24%	16 1%	132 9%	8 1%	82 6%	83 6%	90 6%	20 1%	32 2%	140 9%	1 0%	29 2%	7 0%	149 10%	5 0%	15 1%

### Prison Complex Offenders By County Of Commitment

Institution	Total	Atl	Ber	Burl	Cam	Cape May	Cum	Ess	Glou	Hud	Hunt	Mer	Mid	Mon	Mor	Oc	Pas	Sal	Som	Sus	Un	War	Not Coded
Midstate	697 100%	30 4%	29 4%	34 5%	59 8%	17 2%	21 3%	73 10%	9 1%	58 8%	12 2%	48 7%	59 8%	52 7%	16 2%	28 4%	62 9%	5 1%	13 2%	4 1%	62 9%	6 1%	0 0%
NJ State Prison Ad Seg Female	30 100%	1 0%	1 0%	1 0%	5 0%	0 0%	1 0%	4 0%	0 0%	3 0%	0 0%	4 0%	3 0%	0 0%	0 0%	1 0%	1 0%	0 0%	1 0%	1 0%	3 0%	0 0%	0 0%
NJ State Prison Main	1,921 100%	125 6%	94 5%	68 3%	174 9%	25 1%	40 2%	385 20%	11 1%	114 6%	2 0%	146 7%	130 7%	94 5%	33 2%	77 4%	128 7%	12 1%	30 2%	10 1%	153 8%	10 1%	60 3%
NJ State Prison Total	1,951 100%	126 6%	95 5%	69 4%	179 9%	25 1%	41 2%	389 20%	11 1%	117 6%	2 0%	150 8%	133 7%	94 5%	33 2%	78 4%	129 7%	12 1%	31 2%	11 1%	156 8%	10 1%	60 3%
Northern Main	2,301 100%	79 3%	117 5%	43 2%	153 7%	16 1%	39 2%	492 21%	11 0%	303 13%	14 1%	97 4%	166 7%	114 5%	31 1%	64 3%	248 11%	6 0%	55 2%	8 0%	227 10%	14 1%	4 0%
Northern Ad Seg Male	599 100%	46 8%	17 3%	17 3%	63 11%	11 2%	13 2%	134 22%	4 1%	69 12%	3 1%	31 5%	25 4%	24 4%	3 1%	14 2%	43 7%	9 2%	8 1%	5 1%	52 9%	3 1%	5 1%
Northern Total	2,900 100%	125 4%	134 5%	60 2%	216 7%	27 1%	52 2%	626 22%	15 1%	372 13%	17 1%	128 4%	191 7%	138 5%	34 1%	78 3%	291 10%	15 1%	63 2%	13 0%	279 10%	17 1%	9 0%
Southern	2,315 100%	216 9%	69 3%	76 3%	314 14%	66 3%	95 4%	290 13%	65 3%	197 9%	17 1%	119 5%	130 6%	111 5%	30 1%	91 4%	172 7%	32 1%	22 1%	16 1%	172 7%	13 1%	2 0%
South Woods	3,374 100%	323 10%	107 3%	126 4%	466 14%	82 2%	133 4%	479 14%	93 3%	228 7%	14 0%	183 5%	190 6%	154 5%	66 2%	123 4%	211 6%	46 1%	59 2%	23 1%	235 7%	26 1%	7 0%
<b>SUBTOTAL PRISON MALES</b>	<b>15,882 100%</b>	<b>1,123 7%</b>	<b>602 4%</b>	<b>505 3%</b>	<b>1,821 11%</b>	<b>292 2%</b>	<b>470 3%</b>	<b>2,656 17%</b>	<b>278 2%</b>	<b>1,378 9%</b>	<b>83 1%</b>	<b>850 5%</b>	<b>975 6%</b>	<b>795 5%</b>	<b>240 2%</b>	<b>549 3%</b>	<b>1,251 8%</b>	<b>149 1%</b>	<b>272 2%</b>	<b>101 1%</b>	<b>1,298 8%</b>	<b>95 1%</b>	<b>99 1%</b>

### Prison Complex Offenders By County Of Commitment

Institution	Total	Atl	Ber	Burl	Cam	Cape May	Cum	Ess	Glou	Hud	Hunt	Mer	Mid	Mon	Mor	Oc	Pas	Sal	Som	Sus	Un	War	Not Coded
ADTC	700 100%	34 5%	46 7%	34 5%	61 9%	14 2%	20 3%	45 6%	16 2%	41 6%	7 1%	25 4%	66 9%	45 6%	22 3%	53 8%	71 10%	14 2%	11 2%	9 1%	48 7%	13 2%	5 1%
<b>Subtotal</b>	<b>16,582</b> <b>100%</b>	<b>1,157</b> <b>7%</b>	<b>648</b> <b>4%</b>	<b>539</b> <b>3%</b>	<b>1,882</b> <b>11%</b>	<b>306</b> <b>2%</b>	<b>490</b> <b>3%</b>	<b>2,701</b> <b>16%</b>	<b>294</b> <b>2%</b>	<b>1,419</b> <b>9%</b>	<b>90</b> <b>1%</b>	<b>875</b> <b>5%</b>	<b>1,041</b> <b>6%</b>	<b>840</b> <b>5%</b>	<b>262</b> <b>2%</b>	<b>602</b> <b>4%</b>	<b>1,322</b> <b>8%</b>	<b>163</b> <b>1%</b>	<b>283</b> <b>2%</b>	<b>110</b> <b>1%</b>	<b>1,346</b> <b>8%</b>	<b>108</b> <b>1%</b>	<b>104</b> <b>1%</b>
Mahan - Female Prison	825 100%	69 8%	40 5%	33 4%	77 9%	22 3%	11 1%	86 10%	24 3%	61 7%	7 1%	49 6%	64 8%	64 8%	22 3%	39 5%	53 6%	8 1%	13 2%	9 1%	58 7%	9 1%	7 1%
<b>Total Prison Complex</b>	<b>17,407</b> <b>100%</b>	<b>1,226</b> <b>7%</b>	<b>688</b> <b>4%</b>	<b>572</b> <b>3%</b>	<b>1,959</b> <b>11%</b>	<b>328</b> <b>2%</b>	<b>501</b> <b>3%</b>	<b>2,787</b> <b>16%</b>	<b>318</b> <b>2%</b>	<b>1,480</b> <b>9%</b>	<b>97</b> <b>1%</b>	<b>924</b> <b>5%</b>	<b>1105</b> <b>6%</b>	<b>904</b> <b>5%</b>	<b>284</b> <b>2%</b>	<b>641</b> <b>4%</b>	<b>1,375</b> <b>8%</b>	<b>171</b> <b>1%</b>	<b>296</b> <b>2%</b>	<b>119</b> <b>1%</b>	<b>1,404</b> <b>8%</b>	<b>117</b> <b>1%</b>	<b>111</b> <b>1%</b>

### Youth Complex Offenders By County Of Commitment

Institution	Total	Atl	Ber	Burl	Cam	Cape May	Cum	Ess	Glou	Hud	Hunt	Mer	Mid	Mon	Mor	Oc	Pas	Sal	Som	Sus	Un	War	Not Coded
<b>Garden State</b>	1,864 100%	139 7%	48 3%	77 4%	265 14%	35 2%	49 3%	231 12%	42 2%	154 8%	8 0%	102 5%	123 7%	102 5%	26 1%	73 4%	174 9%	22 1%	42 2%	15 1%	121 6%	15 1%	1 0%
<b>Mountainview</b>	1,154 100%	67 6%	47 4%	38 3%	105 9%	14 1%	21 2%	189 16%	19 2%	113 10%	11 1%	41 4%	81 7%	52 5%	31 3%	31 3%	115 10%	10 1%	27 2%	16 1%	114 10%	11 1%	1 0%
<b>Wagner Main</b>	887 100%	63 7%	26 3%	29 3%	112 13%	14 2%	14 2%	141 16%	11 1%	99 11%	6 1%	78 9%	56 6%	42 5%	9 1%	26 3%	82 9%	12 1%	10 1%	3 0%	47 5%	6 1%	1 0%
<b>Wagner Ad Seg</b>	282 100%	15 5%	6 2%	6 2%	33 12%	2 1%	12 4%	60 21%	1 0%	26 9%	2 1%	19 7%	19 7%	10 4%	2 1%	8 3%	21 7%	2 1%	3 1%	3 1%	30 11%	2 1%	0 0%
<b>Wagner Minimum Units</b>	166 100%	13 8%	3 2%	7 4%	33 20%	1 1%	9 5%	22 13%	3 2%	10 6%	2 1%	11 7%	13 8%	4 2%	1 1%	4 2%	11 7%	3 2%	1 1%	0 0%	15 9%	0 0%	0 0%
<b>Wagner Total</b>	1,335 100%	91 7%	35 3%	42 3%	178 13%	17 1%	35 3%	223 17%	15 1%	135 10%	10 1%	108 8%	88 7%	56 4%	12 1%	38 3%	114 9%	17 1%	14 1%	6 0%	92 7%	8 1%	1 0%
<b>Total Youth</b>	<b>4,353 100%</b>	<b>297 7%</b>	<b>52 1%</b>	<b>42 1%</b>	<b>111 3%</b>	<b>6 0%</b>	<b>29 1%</b>	<b>335 8%</b>	<b>16 0%</b>	<b>116 3%</b>	<b>7 0%</b>	<b>76 2%</b>	<b>74 2%</b>	<b>88 2%</b>	<b>18 0%</b>	<b>28 1%</b>	<b>118 3%</b>	<b>1 0%</b>	<b>26 1%</b>	<b>6 0%</b>	<b>138 3%</b>	<b>5 0%</b>	<b>15 0%</b>

### Offenders In Other Facilities By County Of Commitment

Institution	Total	Atl	Ber	Burl	Cam	Cape May	Cum	Ess	Glou	Hud	Hunt	Mer	Mid	Mon	Mor	Oc	Pas	Sal	Som	Sus	Un	War	Not Coded
Central Medical	10 100%	0 0%	0 0%	1 10%	1 10%	0 0%	0 0%	1 10%	0 0%	3 30%	0 0%	1 10%	1 10%	0 0%	0 0%	0 0%	0 0%	1 10%	0 0%	0 0%	0 0%	1 10%	0 0%
County Jail	529 100%	7 1%	3 1%	2 0%	11 2%	2 0%	10 2%	20 4%	3 1%	5 1%	1 0%	5 1%	8 2%	24 5%	1 0%	7 1%	8 2%	4 1%	5 1%	2 0%	3 1%	1 0%	397 75%
Halfway House	2,840 100%	238 8%	86 3%	90 3%	375 13%	52 2%	82 3%	392 14%	48 2%	283 10%	18 1%	128 5%	154 5%	127 4%	31 1%	77 3%	287 10%	27 1%	56 2%	14 0%	251 9%	23 1%	1 0%
<b>Total Other Facilities</b>	<b>3,379 100%</b>	<b>245 7%</b>	<b>89 3%</b>	<b>93 3%</b>	<b>387 11%</b>	<b>54 2%</b>	<b>92 3%</b>	<b>413 12%</b>	<b>51 2%</b>	<b>291 9%</b>	<b>19 1%</b>	<b>134 4%</b>	<b>163 5%</b>	<b>151 4%</b>	<b>32 1%</b>	<b>84 2%</b>	<b>295 9%</b>	<b>32 1%</b>	<b>61 2%</b>	<b>16 0%</b>	<b>254 8%</b>	<b>25 1%</b>	<b>398 12%</b>