



**SIX FLAGS GREAT ADVENTURE & SAFARI
NOW THE WORLD'S LARGEST THEME PARK!**

NEW JERSEY CIVIL SERVICES

Purchase Your Tickets and Season Passes Today!
Great Savings when you make a purchase through your organization!

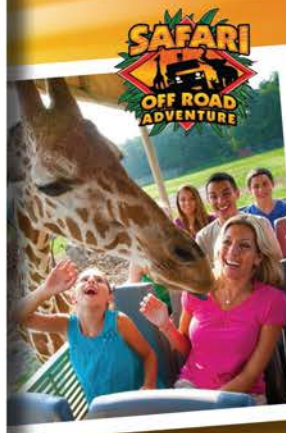
GO TO THIS LINK:

www.sixflags.com/partnerlogin

ENTER THE USER NAME: CSCGA

PASSWORD: SixFlags1

(password is case + numeric sensitive)



ENJOY THE THRILLING SAVINGS ALL SEASON LONG!

One-Day Theme Park Admission 3/23/13 – 5/31/13: \$34.99*

One-Day Theme Park Admission 6/1/13 – 10/13/13: \$35.99*

Fright Fest Admission 10/14/13- 10/31/13: \$37.99*

Hurricane Harbor Admission: \$27.99 all season

Season Passes: \$62.99*

Premium Season Passes: \$72.99*

*NJ state tax is not included
\$5.99 processing fee per order

sixflags.com

GREEN LANTERN and all related characters and elements are trademarks of an © DC Comics. Due to maintenance and other circumstances, certain rides, shows and attractions (including new rides, shows and attractions) may not be open to the public.
(s13) ppi 13839



WHEN TO GO AND HOW TO GET HERE



2013 OPERATING CALENDARS

MARCH

S	M	T	W	T	F	S
					1	2
3	4	5	6	7	8	9
10	11	12	13	14	15	16
17	18	19	20	21	22	23
24	25	26	27	28	29	30
31						

APRIL

S	M	T	W	T	F	S
	1	2	3	4	5	6
7	8	9	10	11	12	13
14	15	16	17	18	19	20
21	22	23	24	25	26	27
28	29	30				

MAY

S	M	T	W	T	F	S
			1	2	3	4
5	6	7	8	9	10	11
12	13	14	15	16	17	18
19	20	21	22	23	24	25
26	27	28	29	30	31	

JUNE

S	M	T	W	T	F	S
						1
2	3	4	5	6	7	8
9	10	11	12	13	14	15
16	17	18	19	20	21	22
23	24	25	26	27	28	29
30						

JULY

S	M	T	W	T	F	S
	1	2	3	4	5	6
7	8	9	10	11	12	13
14	15	16	17	18	19	20
21	22	23	24	25	26	27
28	29	30	31			

AUGUST

S	M	T	W	T	F	S
				1	2	3
4	5	6	7	8	9	10
11	12	13	14	15	16	17
18	19	20	21	22	23	24
25	26	27	28	29	30	31

SEPTEMBER

S	M	T	W	T	F	S
1	2	3	4	5	6	7
8	9	10	11	12	13	14
15	16	17	18	19	20	21
22	23	24	25	26	27	28
29	30					

OCTOBER

S	M	T	W	T	F	S
		1	2	3	4	5
6	7	8	9	10	11	12
13	14	15	16	17	18	19
20	21	22	23	24	25	26
27	28	29	30	31		

- 10:30AM-6PM
- 10:30AM-9PM
- 10:30AM-11PM
- 5:30PM-11PM
- CLOSED FOR PRIVATE EVENT
- DATES & HOURS SUBJECT TO CHANGE WITHOUT NOTICE.
- 10:30AM-8PM
- 10:30AM-10PM
- 5:30PM-10PM
- PARK CLOSED



MAY

S	M	T	W	T	F	S
			1	2	3	4
5	6	7	8	9	10	11
12	13	14	15	16	17	18
19	20	21	22	23	24	25
26	27	28	29	30	31	

JUNE

S	M	T	W	T	F	S
						1
2	3	4	5	6	7	8
9	10	11	12	13	14	15
16	17	18	19	20	21	22
23	24	25	26	27	28	29
30						

JULY

S	M	T	W	T	F	S
	1	2	3	4	5	6
7	8	9	10	11	12	13
14	15	16	17	18	19	20
21	22	23	24	25	26	27
28	29	30	31			

AUGUST

S	M	T	W	T	F	S
				1	2	3
4	5	6	7	8	9	10
11	12	13	14	15	16	17
18	19	20	21	22	23	24
25	26	27	28	29	30	31

SEPTEMBER

S	M	T	W	T	F	S
1	2	3	4	5	6	7
8	9	10	11	12	13	14
15	16	17	18	19	20	21
22	23	24	25	26	27	28
29	30					



Exit 7A - NJ Turnpike or Exit 98 Garden State Parkway

DRIVING DIRECTIONS:

Six Flags is located approximately one hour between New York and Philadelphia. Take the NJ Turnpike to Exit 7A to I-195 East, to Exit 16A (Rt. 537 West) and follow to Six Flags entrance, on right. Or, take the Garden State Parkway to Exit 98 to I-195 West, to Exit 16 (Rt. 537 West) and follow to Six Flags entrance, on right.

TRANSPORTATION:

NJ Transit offers bus service from New York City, Philadelphia, Newark and Camden, NJ. Call 1-973-275-5555.

Six Flags Great Adventure & Hurricane Harbor
Rt. 537 P.O. Box 120
Jackson, NJ 08527
P: 732.928.2000 ext. 2859
F: 732.833.0116

sixflags.com

- 10:30AM-5PM
- 10:30AM-6PM
- 10:30AM-6:30PM
- 10:30AM-7PM
- PARK CLOSED
- DATES & HOURS SUBJECT TO CHANGE WITHOUT NOTICE.

NEW FOR 2013



OPENING LATE SPRING

Six Flags Great Adventure will undergo its most dramatic transformation in 13 years as the 160-acre theme park and 350-acre Wild Safari animal park unite as one property to become the world's largest theme park. Get ready for the most intense animal experience ever on Safari Off Road Adventure where your group will climb aboard a rugged open-air safari vehicle and embark upon an off road adventure up close to the animals as you splash through ponds, climb hills, cross bridges and venture over rugged terrain.

Coming this summer, experience the all-new Big Wave Racer at Hurricane Harbor. Get ready to plunge down a four story, multi-lane, aerodynamically designed water toboggan racing adventure that lets your group finish with a splash.

