

The New Jersey
**CONSTRUCTION
REPORTER**

FEBRUARY 2013 DATA

CHRIS CHRISTIE, Governor
STATE OF NEW JERSEY

RICHARD E. CONSTABLE III, Commissioner
DEPARTMENT OF COMMUNITY AFFAIRS

EDWARD M. SMITH, Director
DIVISION OF CODES AND STANDARDS

DISTRIBUTED BY THE

New Jersey Department of
COMMUNITY AFFAIRS
DIVISION OF CODES AND STANDARDS
101 South Broad Street,
PO Box 802
Trenton, NJ 08625-0802
www.nj.gov/dca/divisions/codes/reporter/



THE NEW JERSEY CONSTRUCTION REPORTER

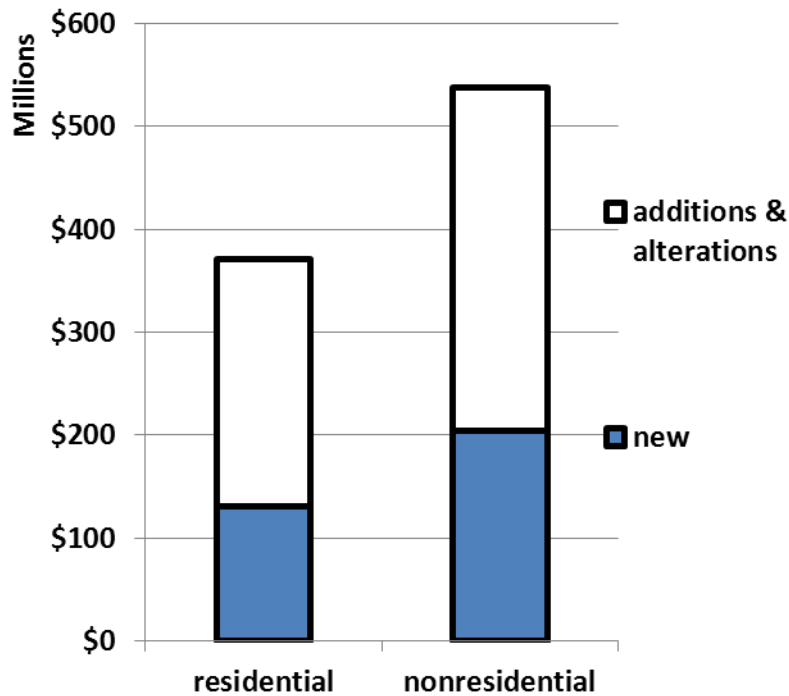
TABLE OF CONTENTS

Contents	Description	Pages
INTRODUCTION		
Highlights	Analysis of data in this month's report	i-ii
Foreword	Background information	1
Exhibits A - C	Definition of terms used throughout the tables	2 - 4
RESIDENTIAL CONSTRUCTION		
Tables 1 - 6	Housing units authorized and certified, housing units demolished, monthly and year-to-date figures	5 - 14
OFFICE SPACE		
Tables 7 - 8	Square feet of office space authorized and certified, monthly and year-to-date figures	15 - 19
RETAIL SPACE		
Tables 9 - 10	Square feet of retail space authorized and certified, monthly and year-to-date figures	20 - 24
DOLLAR AMOUNTS		
Tables 11 - 13	Dollar amount of construction authorized by county and top municipalities, monthly and year to date; dollar amount of construction authorized by use group and permit type, New Jersey totals, monthly and year to date	25 - 30
MUNICIPAL SUMMARY DATA		
	Housing units authorized and certified, office and retail space authorized, and dollar amount of construction authorized by municipality, monthly totals	MSD-1 - MSD-12
ILLUSTRATIONS		
Map 1	Housing units authorized by municipality, year to date	9
Map 2	Office space authorized by municipality, year to date	18
Map 3	Retail space authorized by municipality, year to date	23
Map 4	Estimated cost of construction authorized by municipality, year to date	28

FEBRUARY 2013 HIGHLIGHTS

- New Jersey municipalities issued building permits for \$908.2 million of construction in February. 550 of the State's 565 municipalities reported.
- Residential work accounted for \$370.7 million or 40.8 percent of all activity. Office, retail, and other nonresidential construction totaled \$537.4 million (59.2 percent).
- Work on existing buildings (additions and alterations) amounted to \$573.8 million, making up 63.2 percent of the dollar amount of construction authorized by building permits in February.

**Dollar Amount of Construction, February
2013**



- 829 housing units were authorized by permits. For the second month in a row, Weehawken in Hudson County had the most new houses with 227 authorized units in February and 363 in the previous month.

Top Municipalities

- Newark had the most work in February with \$134.7 million of construction. Two big office developments accounted for over \$117 million. Work began on a new, 733,000 square foot building for Prudential Insurance with an estimated construction cost of \$75.5 million. Another \$41.6 million was authorized to convert the old Macy's department store building to a data center facility.

- Teaneck (Bergen County) ranked second with \$56.2 million of construction in February. A \$52 million addition to a private school accounted for most of this.
- Lawrence Township in Mercer County had \$49.3 million of construction, \$44.1 million of which was for a new 155,000 square foot office building for the Educational Testing Service.

Year-to-Date

- Four months after Hurricane Sandy, one sign of its effects is the number and location of housing demolitions.
- Between January and February 2013, demolition permits were issued to remove 628 dwelling units. Half this total was in twenty municipalities, nine of which were in Ocean County.
- Toms River Township had the most demolitions (49 dwellings) in the first two months of 2013.
- Preliminary data for March, which are not due until next month, indicate there will be a spike in housing demolitions. Union Beach in Monmouth County will likely have over 100 demolitions in March and Little Egg Harbor in Atlantic County will have over 50.

Housing Units Demolished, Selected Municipalities

	2012			2013		March 2013*
	Oct	Nov	Dec	Jan	Feb	* (reports not yet due)
New Jersey	434	215	280	318	308	489
Toms River Township	8	2	6	17	32	
Stafford Township	2	0	6	11	11	23
Brick Township	3	1	21	11	17	14
Long Beach Township	14	3	3	8	12	15
Little Egg Harbor Township	0	2	0	3	11	59
Union Beach Borough	0	0	0	0	0	109

THE NEW JERSEY CONSTRUCTION REPORTER contains statistics on construction activity in New Jersey. Information in the report comes from construction officials who administer the State Uniform Construction Code (UCC) (N.J.A.C. 5:23-1 et seq.) in New Jersey's 566 municipalities.

Each month, construction officials send to the New Jersey Department of Community Affairs (DCA) reports on the permits and certificates they issue. Permits authorize the start of construction and cover four types of activity: (1) New construction permits authorize the start of a new structure. (2) Permits for additions refer to work that will add space (volume and square feet) to an existing building. (3) Alterations also involve existing structures, but the work authorized will not add space. Typically, construction officials issue permits for alterations when the work is subject to one or more of the UCC's major subcodes (building, electrical, plumbing, fire protection). (4) Demolition permits authorize the removal of a building or some other structure. The *CONSTRUCTION REPORTER* identifies only those demolitions that will result in the loss of housing.

In addition to permits, the *CONSTRUCTION REPORTER* has information on the certificates issued by construction officials. While permits authorize the start of construction, certificates are issued for work completed and ready for occupancy. Each month, the *CONSTRUCTION REPORTER* will report on the number of housing units and the amount of office and retail space authorized for construction, along with the number of housing units and the amount of office and retail space completed.

Data Comparability

The *CONSTRUCTION REPORTER* contains information on authorized housing units that is tabulated two different ways. The DCA tabulates Tables 1 through 3 and Tables 8 through 13 based on the use of buildings, defined in "groups" by New Jersey's UCC. Exhibit B on page 3 summarizes these groups.

Tables 4, 5, and 6 show authorized housing units as defined and tabulated by the United States Census Bureau. The New Jersey Department of Labor and Workforce Development prepares these tables for publication in the *CONSTRUCTION REPORTER*. Exhibit C on page 4 describes the housing definitions used by the Census Bureau.

The DCA series and the Census Bureau series on authorized housing units differ two important ways. First, the DCA series includes housing units created as a result of permits issued to alter or make additions to existing structures. The Census Bureau counts only those housing units authorized from permits issued for new construction.

Second, the Census Bureau imputes data for localities that fail to submit monthly reports on time. An asterisk in the Census column of data appearing in the Municipal Summary Data table at the back of the *CONSTRUCTION REPORTER* indicates those towns with imputed data. The Census Bureau bases these imputations on historic trends. The DCA series shows information for only those towns that submitted monthly reports. If a municipality failed to submit a monthly report on time, "No report" appears in the appropriate columns in the Municipal Summary Data table.

Additional Terms

A number of other terms appear in the tables throughout the *CONSTRUCTION REPORTER*. Exhibit A on page 2 defines additional construction permit and certificate terms.

Exhibit A

Summary of Building Permit and Certificate Terms	
Addition	Permit type issued for construction work that adds space (volume and square feet) to an existing structure.
Alteration	Permit type involving one or more subcodes (building, electrical, fire protection, and plumbing). The work is authorized for an existing structure and does not add new space.
Certificate	A document issued by a construction official indicating completion of work for which a permit was issued.
Dollar Amount of Construction	Estimated cost of work, as reported by the permit applicant to the construction official.
Demolition	Permit type authorizing the demolition of an existing structure.
Housing Units Certified	A rental or for-sale unit completed and certified by the construction official for conforming to the standards in the New Jersey UCC.
Housing Units Authorized by Building Permits	A rental or for-sale dwelling unit authorized by a construction permit. See Exhibits B and C for explanations of the different definitions of housing structures. The Table 1 series and Tables 2 and 3 show housing units as classified by the residential use groups defined in Exhibit B. Tables 4, 5, and 6 identify authorized housing as defined by the U.S. Census Bureau. (See Exhibit C.)
Housing Unit Demolitions	Rental or for-sale housing to be demolished, as reported to the construction official by permit applicants.
New Construction	Permit type authorizing the start of a new structure.
Permit	A document issued by construction officials that authorizes the construction of a new structure or an addition, alteration, or demolition of an existing structure.
Square Feet	Estimated building area, as reported on permits for new construction and additions.
State Buildings	Buildings or structures constructed or owned by the State or any of its instrumentalities. Construction activity reported in this category includes State offices, colleges, hospitals, prisons, facilities operated by New Jersey Transit and the New Jersey Sports and Exposition Authority, and other State authorities.

Exhibit B

Building Groups	
Residential	Buildings where members of households live. Examples of residential groups include: one- and two-family houses (R-3 and R-5); apartments, dormitories, other multifamily houses (R-2); and mixed-use housing, where the house is a relatively smaller part of a building that has another use (e.g., an apartment over a store). Therapeutic residences (R-4) for 6 to 16 occupants are also included in this category. The Table 1 series and Tables 2 and 3 show authorized housing units by group definition.
----- The following groups refer to industrial, commercial, and other nonresidential structures. -----	
Assembly	Structures where people gather for civic, social, or religious purposes. Examples include: theaters and concert halls (group A-1); night clubs, dance halls, casino gaming areas, restaurants, taverns, and bars (A-2); churches, libraries, amusement arcades, community halls, gymnasiums, indoor swimming pools, art galleries, and museums (A-3); arenas, skating rinks, swimming pools, tennis courts (A-4); and grandstands, bleachers stadiums, and amusement park structures (A-5).
Business	Office buildings (group B) for business transactions of all kinds including banks, corporate offices, professional offices, government buildings, beauty shops, motor vehicle showrooms, and out-patient clinics.
Educational	Buildings for educational purposes through the 12th grade (group E).
High Hazard	Buildings used to manufacture, process, or store materials that constitute a high fire, explosion, or health hazard (group H).
Hotels, Motels, Guest Houses	Buildings for shelter and sleeping where the primary occupants use the facility on a temporary basis, staying less than 30 days (group R-1).
Industrial	Factory buildings where the occupants make, process, or assemble products that are not highly combustible, flammable, or explosive. Includes automotive, appliance, and furniture manufacturers; electric power plants; food processing plants; foundries; and water pumping, solid waste disposal, and incineration plants (group F).
Institutional	Buildings for people who suffer from physical limitations because of age or health; buildings for people detained for penal or correction purposes. Includes: supervised residential homes for six or more people (group I-1); medical and nursing-care facilities (I-2); jails, reformatories, and asylums (I-3); and day care for six or more occupants (I-4).
Mercantile	Buildings for display and sale purposes. Includes retail stores, automotive service stations, drug stores, shops, salesrooms, and markets (group M).
Storage	Buildings used to store goods that are not highly combustible or explosive. Includes warehouses, open parking garages, lumberyards, livestock shelters, and mausoleums (group S).
Signs, Fences, Miscellaneous	Accessory buildings and miscellaneous structures including fences over six feet in height, signs, private garages, sheds, agricultural buildings, carports, retaining walls, tanks, and swimming pools (group U).

Exhibit C

Residential Structures (U.S. Census Bureau Definitions)

Tables 4, 5, and 6 show authorized housing units based on the structure types defined below by the U.S. Census Bureau. The number of units shown in these tables refers to those authorized by building permits issued for new construction only.

Single-Family Houses

Include all detached one-family houses and all attached one-family houses separated by a wall that extends from ground to roof with no common heating system or inter-structural public utilities. Include prefabricated, sectionalized, panelized, and modular homes that are manufactured partially off site, but are transported and assembled at the construction site.

Two-Family Buildings

Include all buildings with two housing units that may be above one another or side by side. If built side by side, the structures (1) do not have a wall that extends from ground to roof; or (2) share a heating system; or (3) have inter-structural public utilities, such as water supply and sewage disposal.

Three- and Four-Family Buildings

Include all buildings with three or four housing units. If built side by side, the structures (1) do not have a wall that extends from ground to roof; or (2) share a heating system; or (3) have inter-structural public utilities, such as water supply and sewage disposal.

Five-or-More-Family Buildings

Include all buildings with five or more housing units. If built side by side, the structures (1) do not have a wall that extends from ground to roof; or (2) share a heating system; or (3) have inter-structural public utilities, such as water supply and sewage disposal.

Private Housing Units

Housing owned by a private company or individual during the period of construction. This includes all housing built by nonprofit organizations and "turnkey" housing; for example, housing that will be sold to a local public housing authority when completed.

Public Housing Units

Housing owned by a governmental body during the period of construction.

Table 1a HOUSE 4/8/13

Housing Units Authorized by Building Permits: New Jersey Counties, February 2013								
County	February 2013				Year-to-Date			
	Total	1 & 2 Family	Multifamily	Mixed Use	Total	1 & 2 Family	Multifamily	Mixed Use
ATLANTIC	23	23	0	0	53	53	0	0
BERGEN	59	31	28	0	222	60	162	0
BURLINGTON	21	21	0	0	56	52	4	0
CAMDEN	31	31	0	0	70	36	34	0
CAPE MAY	29	29	0	0	78	68	10	0
CUMBERLAND	16	16	0	0	26	24	0	2
ESSEX	67	12	55	0	79	24	55	0
GLOUCESTER	34	34	0	0	74	72	2	0
HUDSON	246	15	231	0	634	18	616	0
HUNTERDON	4	4	0	0	7	7	0	0
MERCER	5	5	0	0	143	16	127	0
MIDDLESEX	29	29	0	0	142	136	0	6
MONMOUTH	53	50	0	3	180	141	36	3
MORRIS	17	17	0	0	329	36	293	0
OCEAN	88	88	0	0	190	165	24	1
PASSAIC	11	1	10	0	216	26	190	0
SALEM	0	0	0	0	2	2	0	0
SOMERSET	16	16	0	0	163	62	101	0
SUSSEX	3	3	0	0	4	4	0	0
UNION	70	7	63	0	94	31	63	0
WARREN	7	7	0	0	9	9	0	0
STATE BUILDINGS*	0	0	0	0	0	0	0	0
NEW JERSEY	829	439	387	3	2,771	1,042	1,717	12
NJ Feb 2012	932	417	460	55	1,836	890	888	58

The definition of housing units in the Table 1 series and Table 2 do not match those in Tables 4, 5, and 6. See "Data Comparability" section on page 1, and Exhibits B and C on pages 3 and 4 for details.

*State buildings refer to structures owned or constructed by the State or any of its instrumentalities. See Exhibit A, Summary of Building Permit and Certificate Terms, on page 2.

Table 1b HSEMUN1 4/8/13

Housing Units Authorized by Building Permits: Top Municipalities, February 2013						
Rank	Municipality	County	Total	1 & 2 Family	Multifamily	Mixed Use
1	Weehawken Township	Hudson	227	0	227	0
2	Bloomfield Township	Essex	50	0	50	0
3	Linden City	Union	49	1	48	0
4	Montvale Borough	Bergen	28	0	28	0
5	Lakewood Township	Ocean	23	23	0	0
6	Camden City	Camden	17	17	0	0
7	Plainfield City	Union	15	0	15	0
8	Vineland City	Cumberland	14	14	0	0
9	Monroe Township	Gloucester	14	14	0	0
10	Monroe Township	Middlesex	13	13	0	0
11	Ocean City	Cape May	12	12	0	0
12	Barneгат Township	Ocean	11	11	0	0
13	Woodland Park Borough	Passaic	10	0	10	0
14	Egg Harbor Township	Atlantic	9	9	0	0
15	Jersey City	Hudson	9	9	0	0
16	Ocean Township	Monmouth	9	9	0	0
17	Mount Olive Township	Morris	9	9	0	0
18	Manalapan Township	Monmouth	8	8	0	0
19	Brick Township	Ocean	8	8	0	0
20	Franklin Township	Somerset	8	8	0	0
	TOP MUNICIPALITIES		316	165	151	0
	NEW JERSEY		829	439	387	3
	TOP AS % OF STATE		38.1%	37.6%	39.0%	0.0%

The definition of housing units in the Table 1 series and Table 2 do not match those in Tables 4, 5, and 6. See "Data Comparability" section on page 1, and Exhibits B and C on pages 3 and 4 for details.

Table 1c HSEMUN2 4/8/13

Housing Units Authorized by Building Permits: Top Municipalities, January through February 2013						
Rank	Municipality	County	Total	1 & 2 Family	Multifamily	Mixed Use
1	Weehawken Township	Hudson	590	0	590	0
2	Morristown Town	Morris	269	1	268	0
3	Fair Lawn Borough	Bergen	135	1	134	0
4	Trenton City	Mercer	126	0	126	0
5	Franklin Township	Somerset	124	23	101	0
6	Bloomington Borough	Passaic	84	0	84	0
7	Long Branch City	Monmouth	62	26	36	0
8	Passaic City	Passaic	62	0	62	0
9	Monroe Township	Middlesex	53	53	0	0
10	Bloomfield Township	Essex	50	0	50	0
11	Linden City	Union	49	1	48	0
12	Sayreville Borough	Middlesex	35	35	0	0
13	Collingswood Borough	Camden	34	0	34	0
14	Stafford Township	Ocean	31	7	24	0
15	Clifton City	Passaic	30	0	30	0
16	Montvale Borough	Bergen	29	1	28	0
17	West New York Town	Hudson	24	0	24	0
18	Barneget Township	Ocean	24	24	0	0
19	Lakewood Township	Ocean	23	23	0	0
20	Hillsborough Township	Somerset	23	23	0	0
	TOP MUNICIPALITIES		1,857	218	1,639	0
	NEW JERSEY		2,771	1,042	1,717	12
	TOP AS % OF STATE		67.0%	20.9%	95.5%	0.0%

The definition of housing units in the Table 1 series and Table 2 do not match those in Tables 4, 5, and 6. See "Data Comparability" section on page 1, and Exhibits B and C on pages 3 and 4 for details.

Table 1d NEWHSE 4/8/13

Housing Units Authorized by New Construction Building Permits: New Jersey Counties, February 2013								
County	February 2013				Year-to-Date			
	Total	1 & 2 Family	Multifamily	Mixed Use	Total	1 & 2 Family	Multifamily	Mixed Use
ATLANTIC	23	23	0	0	51	51	0	0
BERGEN	59	31	28	0	220	58	162	0
BURLINGTON	21	21	0	0	56	52	4	0
CAMDEN	31	31	0	0	35	35	0	0
CAPE MAY	29	29	0	0	76	66	10	0
CUMBERLAND	16	16	0	0	20	20	0	0
ESSEX	67	12	55	0	78	23	55	0
GLOUCESTER	34	34	0	0	71	71	0	0
HUDSON	246	15	231	0	633	17	616	0
HUNTERDON	4	4	0	0	7	7	0	0
MERCER	5	5	0	0	143	16	127	0
MIDDLESEX	29	29	0	0	106	100	0	6
MONMOUTH	53	50	0	3	179	140	36	3
MORRIS	17	17	0	0	328	35	293	0
OCEAN	88	88	0	0	185	160	24	1
PASSAIC	11	1	10	0	216	26	190	0
SALEM	0	0	0	0	2	2	0	0
SOMERSET	16	16	0	0	163	62	101	0
SUSSEX	3	3	0	0	4	4	0	0
UNION	70	7	63	0	94	31	63	0
WARREN	7	7	0	0	9	9	0	0
STATE BUILDINGS*	0	0	0	0	0	0	0	0
NEW JERSEY	829	439	387	3	2,676	985	1,681	10
NJ Feb 2012	927	414	460	53	1,803	883	865	55

The definition of housing units in the Table 1 series and Table 2 do not match those in Tables 4, 5, and 6. See "Data Comparability" section on page 1, and Exhibits B and C on pages 3 and 4 for details.

*State buildings refer to structures owned or constructed by the State or any of its instrumentalities. See Exhibit A, Summary of Building Permit and Certificate Terms, on page 2.

Housing Units Authorized by Building Permits, January-February 2013

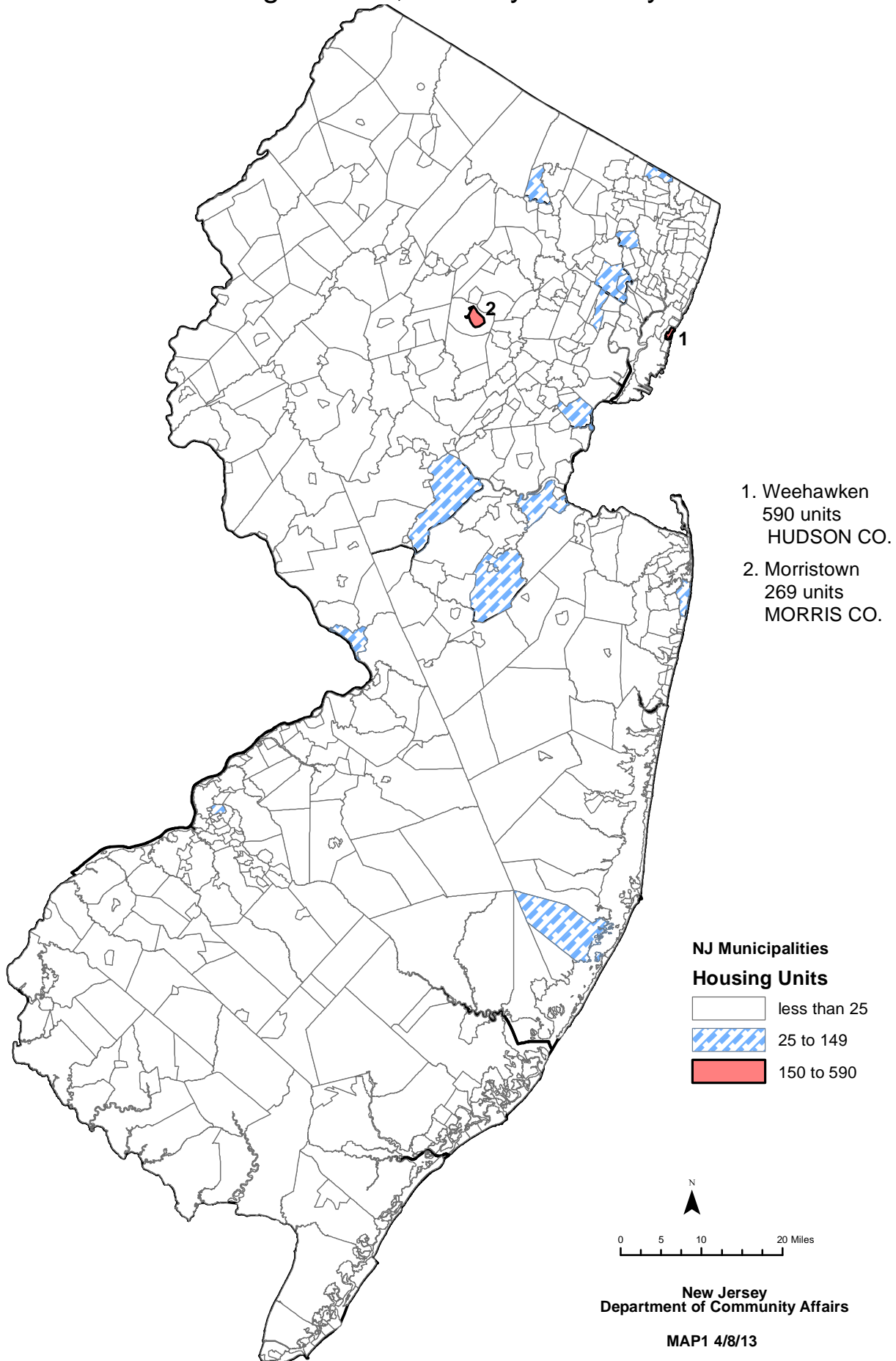


Table 2 CERTS 4/8/13

Housing Units Certified: New Jersey Counties, February 2013								
County	February 2013				Year-to-Date			
	Total	1 & 2 Family	Multi- family	Mixed Use	Total	1 & 2 Family	Multi- family	Mixed Use
ATLANTIC	10	9	1	0	37	36	1	0
BERGEN	41	41	0	0	204	88	116	0
BURLINGTON	9	9	0	0	61	61	0	0
CAMDEN	27	15	12	0	108	26	82	0
CAPE MAY	29	27	2	0	55	52	3	0
CUMBERLAND	13	13	0	0	25	25	0	0
ESSEX	16	9	7	0	45	24	21	0
GLOUCESTER	20	20	0	0	41	41	0	0
HUDSON	78	3	75	0	92	8	84	0
HUNTERDON	12	8	4	0	29	15	14	0
MERCER	28	4	24	0	36	12	24	0
MIDDLESEX	66	49	17	0	322	99	223	0
MONMOUTH	30	28	2	0	78	68	10	0
MORRIS	26	23	3	0	99	53	46	0
OCEAN	96	56	40	0	144	93	51	0
PASSAIC	40	4	36	0	58	10	48	0
SALEM	1	1	0	0	4	4	0	0
SOMERSET	80	8	72	0	117	22	94	1
SUSSEX	2	2	0	0	9	9	0	0
UNION	17	17	0	0	24	24	0	0
WARREN	2	2	0	0	15	15	0	0
STATE BUILDINGS*	0	0	0	0	0	0	0	0
NEW JERSEY	643	348	295	0	1,603	785	817	1
NJ Feb 2012	839	383	455	1	1,600	859	735	6

The definition of housing units in the Table 1 series and Table 2 do not match those in Tables 4, 5, and 6. See "Data Comparability" section on page 1, and Exhibits B and C on pages 3 and 4 for details.

*State buildings refer to structures owned or constructed by the State or any of its instrumentalities. See Exhibit A, Summary of Building Permit and Certificate Terms, on page 2.

Table 3 DEMOS 4/8/13

Housing Units Demolished: New Jersey Counties, January-February 2013								
County	February				Year-to-Date			
	Total	1 & 2 Family	Multifamily	Mixed Use	Total	1 & 2 Family	Multifamily	Mixed Use
ATLANTIC	16	16	0	0	46	44	2	0
BERGEN	26	25	0	1	47	46	0	1
BURLINGTON	1	1	0	0	6	5	0	1
CAMDEN	6	6	0	0	13	13	0	0
CAPE MAY	29	26	3	0	80	77	3	0
CUMBERLAND	5	5	0	0	11	10	0	1
ESSEX	14	14	0	0	24	21	3	0
GLOUCESTER	3	3	0	0	6	6	0	0
HUDSON	13	5	8	0	20	11	9	0
HUNTERDON	0	0	0	0	3	3	0	0
MERCER	0	0	0	0	14	14	0	0
MIDDLESEX	9	9	0	0	19	19	0	0
MONMOUTH	32	31	0	1	52	50	0	2
MORRIS	12	12	0	0	31	30	0	1
OCEAN	126	119	0	7	207	188	5	14
PASSAIC	1	1	0	0	6	6	0	0
SALEM	1	1	0	0	2	2	0	0
SOMERSET	3	3	0	0	3	3	0	0
SUSSEX	3	3	0	0	7	7	0	0
UNION	2	2	0	0	21	18	3	0
WARREN	6	6	0	0	10	10	0	0
STATE BUILDINGS*	0	0	0	0	0	0	0	0
NEW JERSEY	308	288	11	9	628	583	25	20
NJ Feb 2012	275	219	32	24	510	429	40	41

*State buildings refer to structures owned or constructed by the State or any of its instrumentalities. See Exhibit A, Summary of Building Permit and Certificate Terms, on page 2.

Table 4

Residential Construction Authorized by Building Permits (Census Definitions) New Jersey, February 2013						
Type of Construction	January 2013	February 2013	Year to Date*			
			2012	2013	Change	
					Number	Percent
Total Private Units Authorized	1,623	928	2,093	2,551	458	21.9
Single Family	634	507	885	1,141	256	28.9
Two Family	38	48	70	86	16	22.9
Three or Four Family	18	66	78	84	6	7.7
Five or More Family	933	307	1,060	1,240	180	17.0
CENSUS1						

*Year-to-date totals include data received too late for monthly tabulation. The Census Bureau allocates revisions to prior months and therefore monthly year-to-date totals reflect these changes.

Authorized dwelling units in the Table 1 series and Table 2 do not match those in Tables 4, 5, and 6 due to definitional differences. See "Data Comparability" section on page 1, and Exhibits B and C on pages 3 and 4 for details.

Source: U.S. Census Bureau, Manufacturing and Construction Division
Prepared by: N.J. Department of Labor and Workforce Development, March, 2013

Table 5

Residential Construction Authorized by Building Permits (Census Definitions) New Jersey, 1991 to Present						
Year and Month	Number of Municipalities	Total	Single Family	Two Family	3 or 4 Family	5 or More Family
1991	567	14,856	12,869	402	101	1,484
1992	567	19,072	16,506	510	74	1,982
1993	567	25,188	21,340	758	129	2,961
1994	567	25,388	22,437	722	121	2,108
1995	567	21,521	18,341	670	158	2,352
1996	567	24,173	20,853	880	211	2,229
1997	566	28,018	23,472	916	324	3,306
1998	566	31,345	25,459	1,172	221	4,493
1999	566	31,976	25,129	1,468	290	5,089
2000	566	34,585	25,260	1,844	305	7,176
2001	566	28,267	21,503	1,827	779	4,158
2002	566	30,441	22,379	2,110	742	5,210
2003	566	32,984	22,163	2,870	912	7,039
2004	566	35,936	22,429	3,300	1,476	8,731
2005	566	38,588	22,264	3,212	1,437	11,675
2006	566	34,323	17,113	3,088	1,708	12,414
2007	566	25,389	13,066	1,692	1,311	9,320
2008	566	18,363	9,169	664	411	8,119
2009	566	12,421	7,211	400	206	4,604
2010	566	13,540	7,383	680	276	5,201
2011	566	13,079	6,509	438	178	5,954
2012	566	17,988	7,290	566	365	9,767
2013						
January †	565	1,623	634	38	18	933
February	565	928	507	48	66	307
<u>Year to Date*</u>						
February 2012	---	2,093	885	70	78	1,060
February 2013	---	2,551	1,141	86	84	1,240

†Revised – Monthly data are revised to reflect changes in the year-to-date total.

*Year-to-date totals include data received too late for monthly tabulation. The Census Bureau allocates revisions to prior months and therefore monthly year-to-date totals reflect these changes.

Authorized dwelling units in the Table 1 series and Table 2 do not match those in Tables 4, 5, and 6 due to definitional differences. See "Data Comparability" section on page 1, and Exhibits B and C on pages 3 and 4 for details.

Source: U.S. Census Bureau, Manufacturing and Construction Division

Prepared by: N.J. Department of Labor and Workforce Development, March, 2013

Table 6

Residential Construction Authorized by Building Permits (Census Definitions) New Jersey Counties, 2013						
County	February					Total Year to Date* 2013
	Total	Single Family	Two Family	3 or 4 Family	5 or More Family	
ATLANTIC	30	23	2	0	5	50
BERGEN	102	57	10	0	35	183
BURLINGTON	43	27	0	0	16	87
CAMDEN	42	19	0	0	23	80
CAPE MAY	33	19	14	0	0	81
CUMBERLAND	22	22	0	0	0	31
ESSEX	39	12	2	12	13	103
GLOUCESTER	79	29	2	48	0	119
HUDSON	64	3	12	3	46	225
HUNTERDON	24	14	0	0	10	34
MERCER	18	10	0	3	5	43
MIDDLESEX	75	38	0	0	37	190
MONMOUTH	57	45	0	0	12	181
MORRIS	44	39	0	0	5	378
OCEAN	86	79	2	0	5	176
PASSAIC	26	11	0	0	15	177
SALEM	1	1	0	0	0	3
SOMERSET	30	20	0	0	10	200
SUSSEX	10	10	0	0	0	24
UNION	88	14	4	0	70	155
WARREN	15	15	0	0	0	31
NEW JERSEY	928	507	48	66	307	2,551

CENSUS3 7/20/01

*Year-to-date totals include data received too late for monthly tabulation. See Table 5 for revised statewide data for prior months.

Authorized dwelling units in the Table 1 series and Table 2 do not match those in Tables 4, 5, and 6 due to definitional differences. See "Data Comparability" section on page 1, and Exhibits B and C on pages 3 and 4 for details.

Source: U.S. Census Bureau, Manufacturing and Construction Division

Prepared by: N.J. Department of Labor and Workforce Development, March, 2013

Table 7a OFFCSPC 4/8/13

Office Square Feet Authorized by Building Permits: New Jersey Counties, February 2013						
County	February			Year-to-Date		
	Total	New Construction	Additions	Total	New Construction	Additions
ATLANTIC	0	0	0	1,200	1,200	0
BERGEN	111,636	111,514	122	111,638	111,516	122
BURLINGTON	3,103	3,103	0	3,103	3,103	0
CAMDEN	2,444	0	2,444	2,444	0	2,444
CAPE MAY	60	0	60	22,168	22,108	60
CUMBERLAND	0	0	0	2,880	2,880	0
ESSEX	745,138	733,006	12,132	745,138	733,006	12,132
GLOUCESTER	9,335	9,335	0	11,755	11,755	0
HUDSON	0	0	0	1,578	1,578	0
HUNTERDON	0	0	0	0	0	0
MERCER	0	0	0	15,286	0	15,286
MIDDLESEX	19,505	0	19,505	41,810	22,305	19,505
MONMOUTH	7,229	118	7,111	16,376	9,265	7,111
MORRIS	1,075	0	1,075	14,998	10,553	4,445
OCEAN	11,856	11,856	0	70,368	27,811	42,557
PASSAIC	0	0	0	1,800	0	1,800
SALEM	0	0	0	0	0	0
SOMERSET	0	0	0	1	0	1
SUSSEX	0	0	0	24,290	24,290	0
UNION	13,454	4,341	9,113	14,360	5,076	9,284
WARREN	1	0	1	1	0	1
STATE BUILDINGS*	0	0	0	0	0	0
NEW JERSEY	924,836	873,273	51,563	1,101,194	986,446	114,748
NJ Feb 2012	580,908	553,073	27,835	880,978	730,942	150,036

*State buildings refer to structures owned or constructed by the State or any of its instrumentalities. See Exhibit A, Summary of Building Permit and Certificate Terms, on page 2.

Table 7b OFFCMUN1 4/8/13

Office Square Feet Authorized by Building Permits: New Jersey Top Municipalities, February 2013					
Rank	Municipality	County	Total	New Construction	Additions
1	Newark City	Essex	733,006	733,006	0
2	Maywood Borough	Bergen	111,514	111,514	0
3	Livingston Township	Essex	12,132	0	12,132
4	Toms River Township	Ocean	11,856	11,856	0
5	South Brunswick Township	Middlesex	10,205	0	10,205
6	South Plainfield Borough	Middlesex	9,300	0	9,300
7	Cranford Township	Union	9,113	0	9,113
8	Monroe Township	Gloucester	7,200	7,200	0
9	Hazlet Township	Monmouth	7,111	0	7,111
10	Garwood Borough	Union	4,341	4,341	0
11	Bordentown Township	Burlington	3,103	3,103	0
12	Haddon Township	Camden	2,444	0	2,444
13	Mantua Township	Gloucester	2,135	2,135	0
14	Roxbury Township	Morris	1,074	0	1,074
15	Lodi Borough	Bergen	122	0	122
16	West Long Branch Borough	Monmouth	118	118	0
17	Lower Township	Cape May	60	0	60
18	Pequannock Township	Morris	1	0	1
19	Greenwich Township	Warren	1	0	1
20					
	TOP MUNICIPALITIES		924,836	873,273	51,563
	NEW JERSEY		924,836	873,273	51,563
	TOP AS % OF STATE		100.0%	100.0%	100.0%

Table 7c OFFCMUN2 4/8/13

Office Square Feet Authorized by Building Permits: New Jersey Top Municipalities, January-February 2013					
Rank	Municipality	County	Total	New Construction	Additions
1	Newark City	Essex	733,006	733,006	0
2	Maywood Borough	Bergen	111,514	111,514	0
3	Toms River Township	Ocean	56,813	14,256	42,557
4	Hampton Township	Sussex	24,290	24,290	0
5	South Brunswick Township	Middlesex	17,683	7,478	10,205
6	Ewing Township	Mercer	15,286	0	15,286
7	Middle Township	Cape May	12,736	12,736	0
8	Livingston Township	Essex	12,132	0	12,132
9	Dunellen Borough	Middlesex	12,012	12,012	0
10	Monroe Township	Gloucester	9,620	9,620	0
11	South Plainfield Borough	Middlesex	9,300	0	9,300
12	Cranford Township	Union	9,113	0	9,113
13	Jackson Township	Ocean	8,160	8,160	0
14	Morristown Town	Morris	8,153	8,153	0
15	Hazlet Township	Monmouth	7,111	0	7,111
16	Aberdeen Township	Monmouth	6,319	6,319	0
17	Sea Isle City	Cape May	5,172	5,172	0
18	Brick Township	Ocean	4,435	4,435	0
19	Garwood Borough	Union	4,341	4,341	0
20	Dennis Township	Cape May	4,200	4,200	0
TOP MUNICIPALITIES			1,071,396	965,692	105,704
NEW JERSEY			1,101,194	986,446	114,748
TOP AS % OF STATE			97.3%	97.9%	92.1%

Office Square Feet Authorized by Building Permits January-February 2013

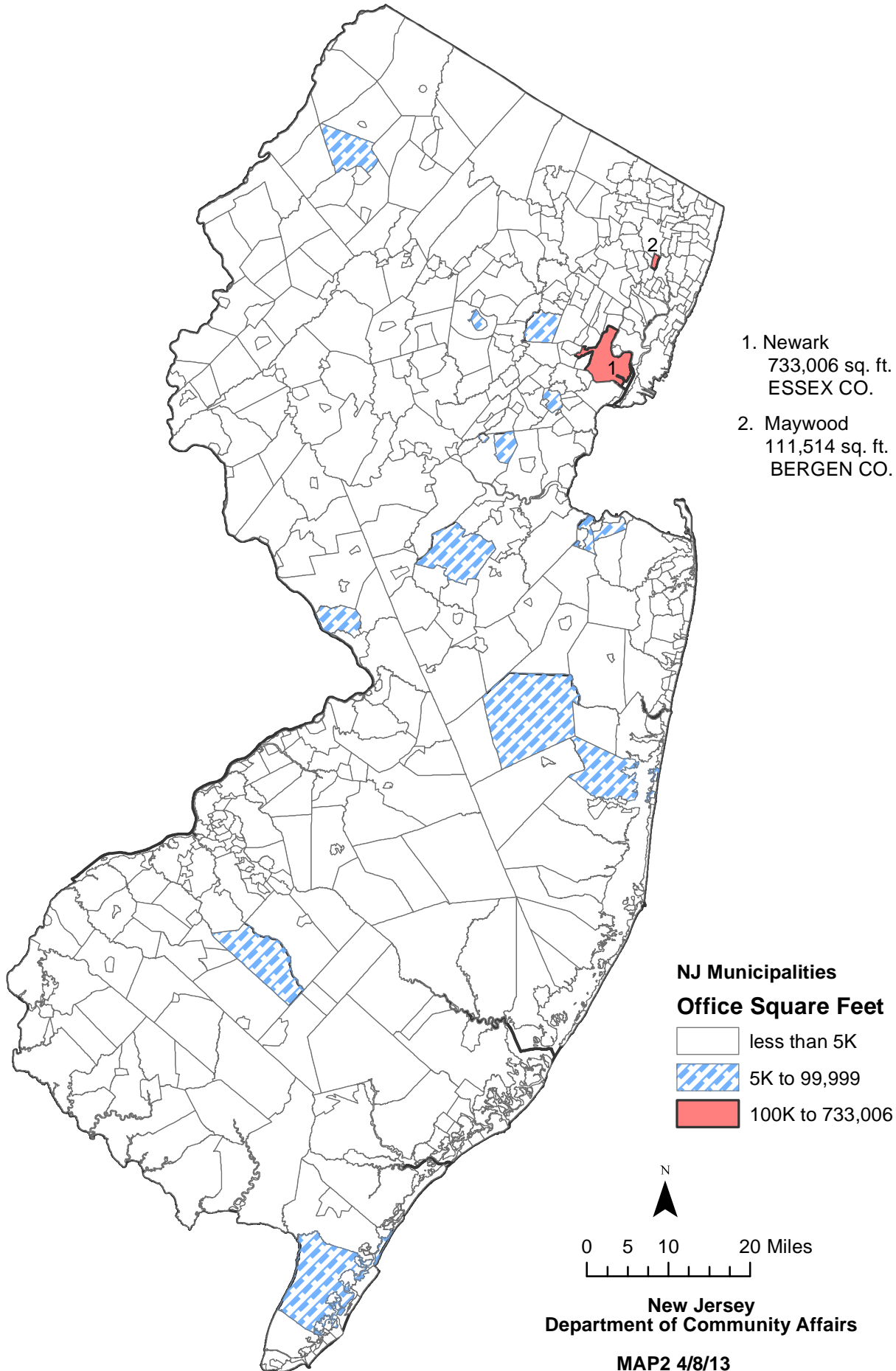


Table 8 CERTOFF 4/8/13

Office Square Feet Certified: New Jersey Counties, February 2013						
County	February 2013			Year-to-Date		
	Total	New Construction	Additions	Total	New Construction	Additions
ATLANTIC	200	200		12,729	200	12,529
BERGEN	19,882	18,582	1,300	26,921	20,133	6,788
BURLINGTON	1,876	1,588	288	3,716	1,588	2,128
CAMDEN	2,928	2,928		117,228	117,228	
CAPE MAY	0	0	0	4,128	2,928	1,200
CUMBERLAND	0	0	0	0	0	0
ESSEX	4,329	3,334	995	5,950	4,955	995
GLOUCESTER	0	0	0	5,586		5,586
HUDSON	0	0	0	0	0	0
HUNTERDON	12,000	8,121	3,879	13,801	9,921	3,880
MERCER	249,716	249,716		251,878	251,878	
MIDDLESEX	241,849	144,330	97,519	255,649	144,330	111,319
MONMOUTH	11,192	2,520	8,672	14,467	4,332	10,135
MORRIS	12,703		12,703	36,569	23,866	12,703
OCEAN	0	0	0	0	0	0
PASSAIC	1,141	429	712	22,852	22,140	712
SALEM	720		720	720		720
SOMERSET	80		80	80		80
SUSSEX	0	0	0	0	0	0
UNION	35,522	33,220	2,302	35,522	33,220	2,302
WARREN	0	0	0	3,095	3,095	
STATE BUILDINGS*	0	0	0	0	0	0
NEW JERSEY	594,138	464,968	129,170	810,891	639,814	171,077
NJ Feb 2012	179,405	164,488	14,917	609,451	468,702	140,749

*State buildings refer to structures owned or constructed by the State or any of its instrumentalities. See Exhibit A, Summary of Building Permit and Certificate Terms, on page 2.

Table 9a RETSPACE 4/8/13

Retail Square Feet Authorized by Building Permits: New Jersey Counties, February 2013						
County	February			Year-to-Date		
	Total	New Construction	Additions	Total	New Construction	Additions
ATLANTIC	0	0	0	0	0	0
BERGEN	5,874	0	5,874	5,874	0	5,874
BURLINGTON	23,844	23,844	0	23,844	23,844	0
CAMDEN	0	0	0	0	0	0
CAPE MAY	0	0	0	0	0	0
CUMBERLAND	0	0	0	0	0	0
ESSEX	0	0	0	2,668	2,668	0
GLOUCESTER	0	0	0	0	0	0
HUDSON	0	0	0	0	0	0
HUNTERDON	21,600	21,600	0	21,600	21,600	0
MERCER	0	0	0	0	0	0
MIDDLESEX	178,910	178,910	0	178,910	178,910	0
MONMOUTH	0	0	0	1,210	1,210	0
MORRIS	0	0	0	17,398	17,398	0
OCEAN	1,286	0	1,286	1,286	0	1,286
PASSAIC	0	0	0	0	0	0
SALEM	0	0	0	0	0	0
SOMERSET	0	0	0	0	0	0
SUSSEX	0	0	0	0	0	0
UNION	0	0	0	6,971	6,971	0
WARREN	1	1	0	1	1	0
STATE BUILDINGS*	0	0	0	0	0	0
NEW JERSEY	231,515	224,355	7,160	259,762	252,602	7,160
NJ Feb 2012	33,024	21,943	11,081	100,095	84,289	15,806

*State buildings refer to structures owned or constructed by the State or any of its instrumentalities. See Exhibit A, Summary of Building Permit and Certificate Terms, on page 2.

Table 9b RETMUN1 4/8/13

Retail Square Feet Authorized by Building Permits: New Jersey Top Municipalities, February 2013					
Rank	Municipality	County	Total	New Construction	Additions
1	Old Bridge Township	Middlesex	178,910	178,910	0
2	Evesham Township	Burlington	23,844	23,844	0
3	Flemington Borough	Hunterdon	21,600	21,600	0
4	Paramus Borough	Bergen	5,874	0	5,874
5	Stafford Township	Ocean	1,286	0	1,286
6	Washington Township	Warren	1	1	0
7					
8					
9					
10					
11					
12					
13					
14					
15					
16					
17					
18					
19					
20					
	TOP MUNICIPALITIES		231,515	224,355	7,160
	NEW JERSEY		231,515	224,355	7,160
	TOP AS % OF STATE		100.0%	100.0%	100.0%

Table 9c RETMUN2 4/8/13

Retail Square Feet Authorized by Building Permits: New Jersey Top Municipalities, January-February 2013					
Rank	Municipality	County	Total	New Construction	Additions
1	Old Bridge Township	Middlesex	178,910	178,910	0
2	Evesham Township	Burlington	23,844	23,844	0
3	Flemington Borough	Hunterdon	21,600	21,600	0
4	Randolph Township	Morris	17,398	17,398	0
5	Paramus Borough	Bergen	5,874	0	5,874
6	Linden City	Union	4,345	4,345	0
7	West Orange Township	Essex	2,668	2,668	0
8	Rahway City	Union	2,626	2,626	0
9	Stafford Township	Ocean	1,286	0	1,286
10	Keyport Borough	Monmouth	1,210	1,210	0
11	Washington Township	Warren	1	1	0
12	Lyndhurst Township	Bergen	28,890	28,890	0
13	Linden City	Union	27,615	27,615	0
14	Toms River Township	Ocean	26,411	11	26,400
15	Hamilton Township	Atlantic	26,000	0	26,000
16	Barnegat Township	Ocean	24,876	24,876	0
17	Deptford Township	Gloucester	24,276	24,276	0
18	Quinton Township	Salem	24,200	24,200	0
19	Pleasantville City	Atlantic	23,289	23,289	0
20	Washington Township	Warren	22,547	22,547	0
TOP MUNICIPALITIES			259,762	252,602	7,160
NEW JERSEY			259,762	252,602	7,160
TOP AS % OF STATE			100.0%	100.0%	100.0%

Retail Square Feet Authorized by Building Permits January-February 2013

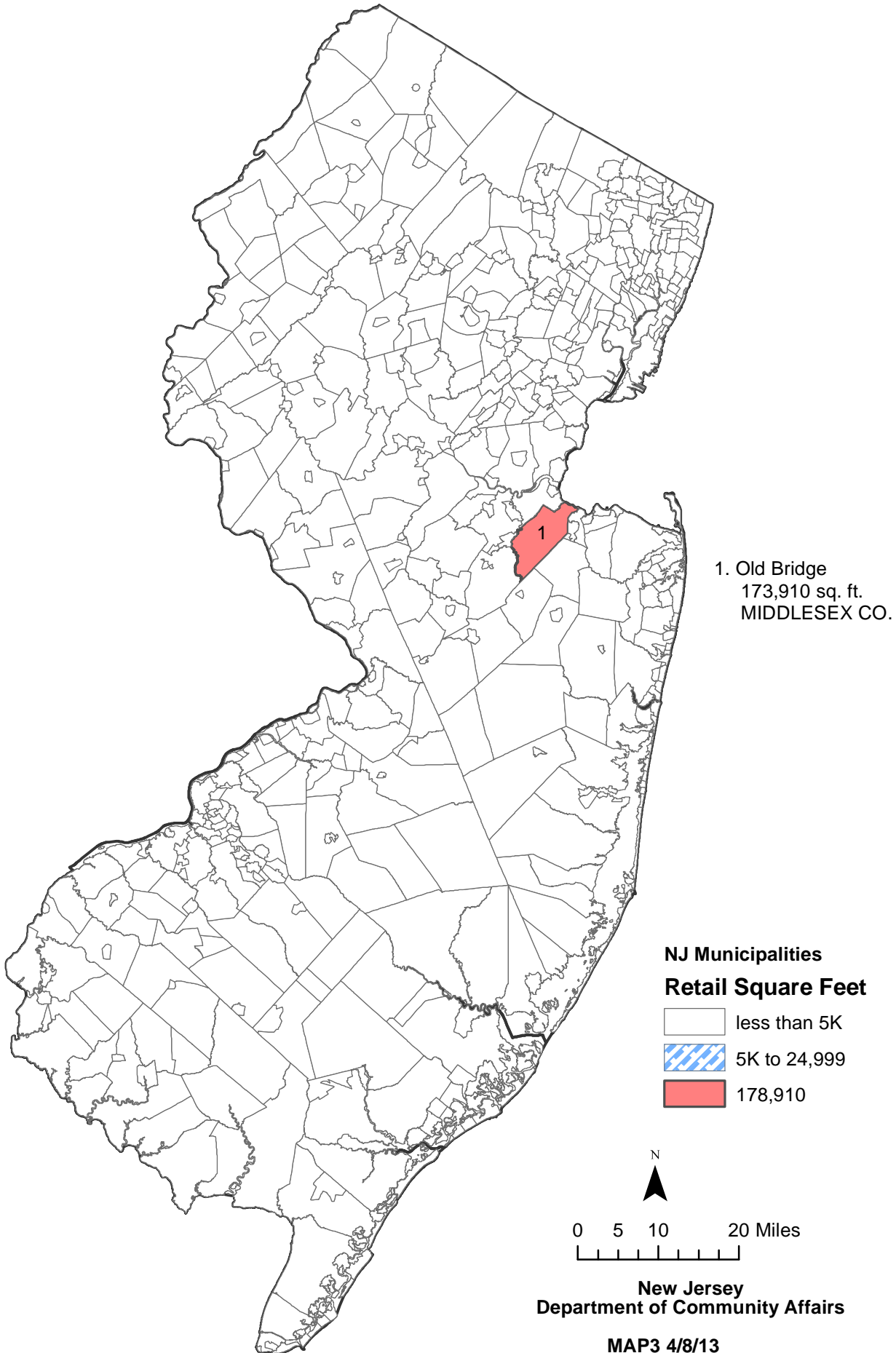


Table 10 CERTRET 4/8/13

Retail Square Feet Certified: New Jersey Counties, February 2013						
County	February			Year-to-Date		
	Total	New Construction	Additions	Total	New Construction	Additions
ATLANTIC	0	0	0	0	0	0
BERGEN	0	0	0	29,364	29,364	0
BURLINGTON	0	0	0	2,115	2,115	0
CAMDEN	0	0	0	0	0	0
CAPE MAY	0	0	0	0	0	0
CUMBERLAND	0	0	0	2,275	2,275	0
ESSEX	0	0	0	2,244	2,244	0
GLOUCESTER	0	0	0	0	0	0
HUDSON	0	0	0	12,288	12,288	0
HUNTERDON	0	0	0	0	0	0
MERCER	0	0	0	200		200
MIDDLESEX	6,552	6,552	0	6,552	6,552	0
MONMOUTH	0	0	0	0	0	0
MORRIS	0	0	0	0	0	0
OCEAN	9,220	9,220	0	9,220	9,220	0
PASSAIC	0	0	0	0	0	0
SALEM	0	0	0	24,200	24,200	0
SOMERSET	0	0	0	16,240	0	16,240
SUSSEX	0	0	0	12,651	12,651	0
UNION	0	0	0	0	0	0
WARREN	0	0	0	0	0	0
STATE BUILDINGS*	0	0	0	0	0	0
NEW JERSEY	15,772	15,772	0	117,349	100,909	16,440
NJ Feb 2012	39,501	30,657	8,844	105,086	95,332	9,754

*State buildings refer to structures owned or constructed by the State or any of its instrumentalities. See Exhibit A, Summary of Building Permit and Certificate Terms, on page 2.

Table 11a WORK 4/8/13

Dollar Amount of Construction Authorized by Building Permits: New Jersey Counties, February 2013						
County	February			Year-to-Date		
	Total	Residential	Nonresidential	Total	Residential	Nonresidential
ATLANTIC	\$24,850,419	\$15,779,716	\$9,070,703	\$57,135,599	\$32,120,544	\$25,015,055
BERGEN	128,787,301	39,376,143	89,411,158	217,968,256	87,232,713	130,735,543
BURLINGTON	28,206,956	9,648,420	18,558,536	56,345,600	23,819,004	32,526,596
CAMDEN	40,070,212	18,059,590	22,010,622	61,870,007	27,981,609	33,888,398
CAPE MAY	15,932,782	13,342,853	2,589,929	40,715,388	34,640,934	6,074,454
CUMBERLAND	10,014,656	2,569,343	7,445,313	23,771,326	4,491,800	19,279,526
ESSEX	174,407,558	28,088,027	146,319,531	257,081,497	56,114,278	200,967,219
GLOUCESTER	18,684,062	15,697,830	2,986,232	35,662,006	25,014,302	10,647,704
HUDSON	37,765,536	23,847,353	13,918,183	204,826,466	144,862,138	59,964,328
HUNTERDON	7,104,881	3,940,475	3,164,406	16,278,693	9,831,305	6,447,388
MERCER	87,341,357	10,870,124	76,471,233	136,741,099	36,135,793	100,605,306
MIDDLESEX	58,358,309	21,845,671	36,512,638	125,059,731	52,150,468	72,909,263
MONMOUTH	58,188,051	42,512,999	15,675,052	144,378,649	109,055,855	35,322,794
MORRIS	51,672,698	20,212,554	31,460,144	134,320,027	82,137,318	52,182,709
OCEAN	60,047,442	50,517,981	9,529,461	124,206,257	98,901,747	25,304,510
PASSAIC	13,335,836	9,563,454	3,772,382	42,065,432	27,065,903	14,999,529
SALEM	855,884	417,128	438,756	2,959,267	1,227,611	1,731,656
SOMERSET	27,429,382	17,797,521	9,631,861	118,506,163	53,382,800	65,123,363
SUSSEX	11,428,349	3,946,418	7,481,931	20,477,737	8,065,726	12,412,011
UNION	26,437,045	19,322,822	7,114,223	66,745,804	43,779,674	22,966,130
WARREN	4,240,547	3,390,898	849,649	8,182,351	5,781,319	2,401,032
STATE BUILDINGS*	23,022,108	0	23,022,108	39,239,050	0	39,239,050
NEW JERSEY	\$908,181,371	\$370,747,320	\$537,434,051	\$1,934,536,405	\$963,792,841	\$970,743,564
NJ Feb 2012	\$703,279,835	\$326,051,500	\$377,228,335	\$1,499,254,045	\$689,828,081	\$809,425,964

*State buildings refer to structures owned or constructed by the State or any of its instrumentalities. See Exhibit A, Summary of Building Permit and Certificate Terms, on page 2.

Table 11c WORK1 4/8/13

Dollar Amount Construction Authorized by Building Permits: Top Municipalities, February 2013					
Rank	Municipality	County	Total	Residential	Nonresidential
1	Newark City	Essex	\$134,686,812	\$2,897,024	\$131,789,788
2	Teaneck Township	Bergen	56,241,506	2,851,229	53,390,277
3	Lawrence Township	Mercer	49,284,962	992,609	48,292,353
4	Jersey City	Hudson	20,257,637	12,538,884	7,718,753
5	Gloucester Township	Camden	18,841,487	7,816,771	11,024,716
6	Parsippany-Troy Hills	Morris	13,847,338	1,176,963	12,670,375
7	Princeton (1114)	Mercer	13,800,552	2,392,611	11,407,941
8	Woodbridge Township	Middlesex	13,624,530	1,910,456	11,714,074
9	Maywood Borough	Bergen	11,908,414	463,394	11,445,020
10	Hopewell Township	Mercer	11,406,615	773,080	10,633,535
11	Old Bridge Township	Middlesex	9,783,667	857,497	8,926,170
12	Long Beach Township	Ocean	8,859,804	6,573,154	2,286,650
13	Mantua Township	Gloucester	8,490,950	8,318,355	172,595
14	Moorestown Township	Burlington	7,647,710	620,142	7,027,568
15	Morris Township	Morris	6,845,254	1,782,886	5,062,368
16	West Orange	Essex	6,410,350	1,019,334	5,391,016
17	Paramus Borough	Bergen	6,386,721	933,987	5,452,734
18	Hopatcong Borough	Sussex	5,930,421	514,071	5,416,350
19	Lakewood Township	Ocean	5,903,966	4,573,718	1,330,248
20	City of Orange	Essex	5,887,145	5,853,745	33,400
	TOP MUNICIPALITIES		410,158,696	64,859,910	351,185,931
	NEW JERSEY		\$908,181,371	\$370,747,320	\$537,434,051
	TOP AS % OF STATE		45.2%	17.5%	65.3%

Table 11c WORK2 4/8/13

Dollar Amount Construction Authorized by Building Permits: Top Municipalities, January-February 2013					
Rank	Municipality	County	Total	Residential	Nonresidential
1	Newark City	Essex	\$177,573,466	\$4,862,292	\$172,711,174
2	Weehawken Township	Hudson	106,470,060	104,326,552	2,143,508
3	Teaneck Township	Bergen	60,150,766	6,283,900	53,866,866
4	Lawrence Township	Mercer	51,469,681	1,637,934	49,831,747
5	Branchburg Township	Somerset	44,512,814	1,195,568	43,317,246
6	Jersey City	Hudson	40,781,843	22,602,789	18,179,054
7	Morristown Town	Morris	38,557,492	30,309,096	8,248,396
8	Princeton (1114)	Mercer	28,450,560	5,618,094	22,832,466
9	Harrison Town	Hudson	27,489,893	924,115	26,565,778
10	Franklin Township	Somerset	21,419,714	18,184,737	3,234,977
11	Long Branch City	Monmouth	21,378,113	18,476,564	2,901,549
12	Woodbridge Township	Middlesex	20,193,895	4,038,902	16,154,993
13	Gloucester Township	Camden	20,042,323	8,746,767	11,295,556
14	Trenton City	Mercer	19,415,867	18,697,800	718,067
15	Toms River Township	Ocean	18,949,556	7,894,822	11,054,734
16	Piscataway Township	Middlesex	18,247,899	3,482,798	14,765,101
17	Paramus Borough	Bergen	17,640,412	2,394,397	15,246,015
18	Parsippany-Troy Hills	Morris	17,347,639	2,458,667	14,888,972
19	Hackensack City	Bergen	16,800,030	1,664,863	15,135,167
20	Atlantic City	Atlantic	16,097,088	5,180,831	10,916,257
TOP MUNICIPALITIES			782,989,111	268,981,488	514,007,623
NEW JERSEY			\$1,934,536,405	\$963,792,841	\$970,743,564
TOP AS % OF STATE			40.5%	27.9%	52.9%

Estimated Dollar Amount of Construction Authorized by Building Permits, January-February 2013

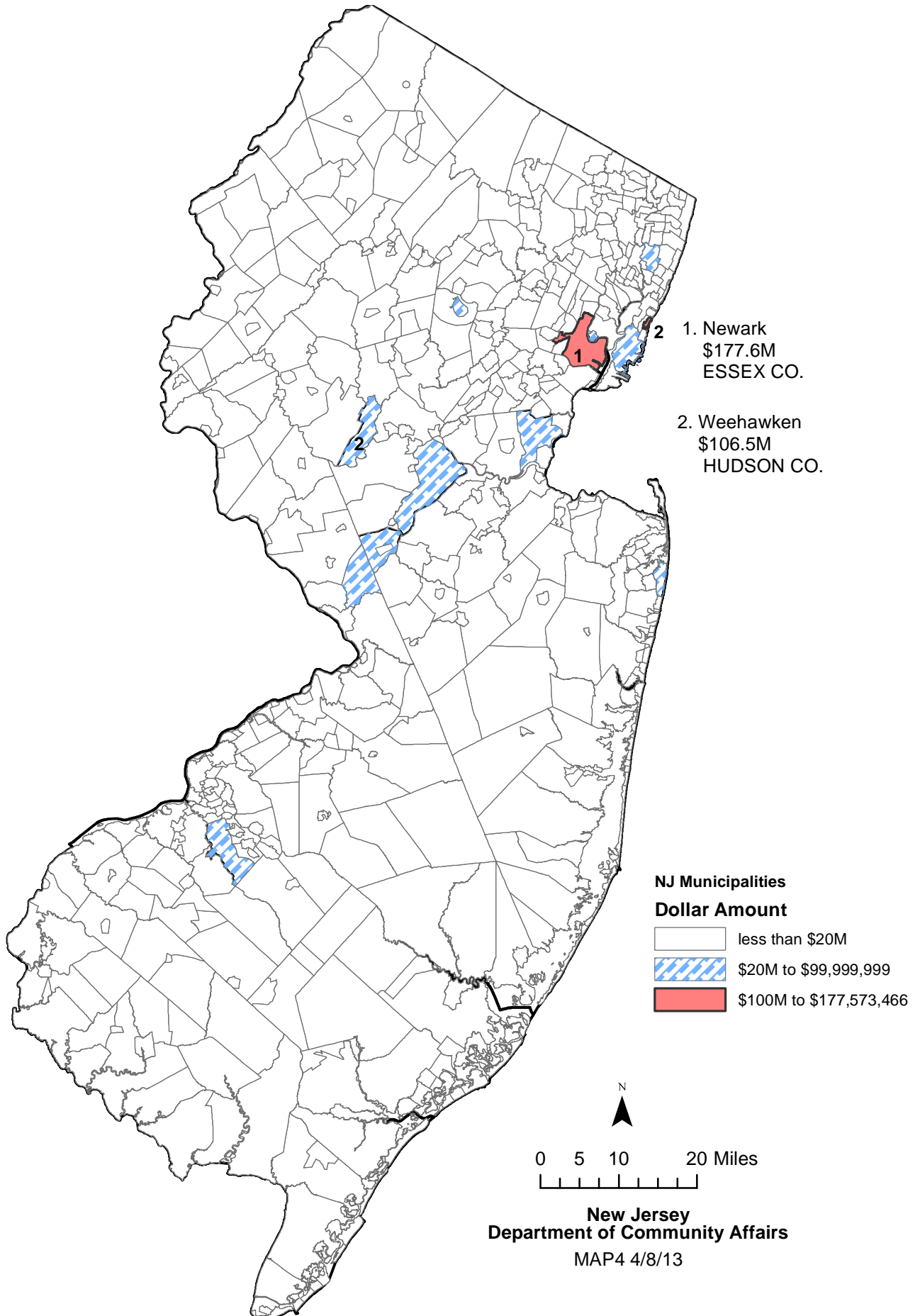


Table 12 USEGROUP 4/8/13

Dollar Amount of Construction Authorized by Building Permits by Use Group: New Jersey, February 2013						
Use Group	February			Year-to-Date		
	Permits	Construction Costs	Square Feet	Permits	Construction Costs	Square Feet
RESIDENTIAL	25,837	\$370,747,320	2,561,992	59,030	\$963,792,841	6,649,334
1 & 2 Family	24,285	304,540,759	1,768,655	55,512	673,006,377	3,732,441
Multifamily	1,552	66,206,561	793,337	3,518	290,786,464	2,916,893
NONRESIDENTIAL	5,266	\$537,434,051	2,009,341	11,359	970,743,564	3,081,715
Hotels, Motels, Guest Houses	68	5,369,530	4,716	166	35,684,885	128,287
Assembly	392	38,327,395	83,114	868	80,138,686	340,052
Business	1,995	284,301,437	932,466	4,288	484,550,355	1,108,824
Educational	126	65,655,594	12,634	268	80,250,141	17,408
Hazardous Use	7	165,018	144	16	961,485	144
Industrial	55	14,215,703	63,698	122	33,945,291	128,995
Institutional	78	8,804,072	0	151	30,463,964	29,304
Retail	324	35,125,898	231,515	699	59,701,210	259,762
Storage	143	22,716,543	459,275	325	34,940,398	613,712
Signs, Fences, Miscellaneous	2,078	62,752,861	221,779	4,456	130,107,149	455,227
NEW JERSEY	31,103	\$908,181,371	4,571,333	70,389	\$1,934,536,405	9,731,049
NJ Feb 2012	27,086	\$703,279,835	4,176,129	56,586	\$1,499,254,045	8,051,834

Table 13 PARTIC 4/8/13

Dollar Amount of Construction Authorized by Building Permits: New Jersey, January 2013					
Month	Number of Municipalities Reporting	Total	New Construction	Additions	Alterations
JANUARY	564	1,026,355,034	435,970,089	87,215,442	503,169,503
FEBRUARY	550	908,181,371	334,390,082	90,754,887	483,036,402
MARCH					
APRIL					
MAY					
JUNE					
JULY					
AUGUST					
SEPTEMBER					
OCTOBER					
NOVEMBER					
DECEMBER					
TOTAL		\$1,934,536,405	\$770,360,171	\$177,970,329	\$986,205,905
NJ Feb 2012		\$1,499,254,045	\$489,082,965	\$123,134,677	\$887,036,403

NOTE:

Users of the monthly *CONSTRUCTION REPORTER* may notice that year-to-date figures in a particular issue may not be obtained by merely summing the monthly totals that appear in previous issues. This is because the construction data compiled by the New Jersey Department of Community Affairs are continuously updated. Monthly construction reports submitted too late to make the January issue of the *CONSTRUCTION REPORTER*, for example, are included in the year-to-date totals that appear in the February issue.

MUNICIPAL SUMMARY DATA, February 2013

AREA NAME	AUTHORIZED HOUSING UNITS	AUTHORIZED HOUSING UNITS (CENSUS DEFINITIONS)	HOUSING UNITS CERTIFIED	OFFICE SPACE AUTHORIZED BY BUILDING PERMITS	RETAIL SPACE AUTHORIZED BY BUILDING PERMITS	RESIDENTIAL (\$ AMOUNT)	NONRESIDENTIAL (\$ AMOUNT)
Atlantic County	23	30	10	0	0	15,779,716	9,070,703
Bergen County	59	102	41	111,636	5,874	39,376,143	89,411,158
Burlington County	21	43	9	3,103	23,844	9,648,420	18,558,536
Camden County	31	42	27	2,444	0	18,059,590	22,010,622
Cape May County	29	33	29	60	0	13,342,853	2,589,929
Cumberland County	16	22	13	0	0	2,569,343	7,445,313
Essex County	67	39	16	745,138	0	28,088,027	146,319,531
Gloucester County	34	79	20	9,335	0	15,697,830	2,986,232
Hudson County	246	64	78	0	0	23,847,353	13,918,183
Hunterdon County	4	24	12	0	21,600	3,940,475	3,164,406
Mercer County	5	18	28	0	0	10,870,124	76,471,233
Middlesex County	29	75	66	19,505	178,910	21,845,671	36,512,638
Monmouth County	53	57	30	7,229	0	42,512,999	15,675,052
Morris County	17	44	26	1,075	0	20,212,554	31,460,144
Ocean County	88	86	96	11,856	1,286	50,517,981	9,529,461
Passaic County	11	26	40	0	0	9,563,454	3,772,382
Salem County	0	1	1	0	0	417,128	438,756
Somerset County	16	30	80	0	0	17,797,521	9,631,861
Sussex County	3	10	2	0	0	3,946,418	7,481,931
Union County	70	88	17	13,454	0	19,322,822	7,114,223
Warren County	7	15	2	1	1	3,390,898	849,649
State Buildings	0		0	0	0	0	23,022,108
New Jersey	829	928	643	924,836	231,515	370,747,320	537,434,051
NEW JERSEY 2011	11,882	12,952	10,352	4,915,544	1,680,445	\$4,832,350,928	\$6,107,458,821
NEW JERSEY 2010	11,885	13,535	11,625	5,496,579	2,192,231	4,879,205,601	4,889,436,742
NEW JERSEY 2009	11,145	10,827	14,460	4,253,888	2,248,935	4,506,768,272	5,010,957,124
NEW JERSEY 2008	16,338	18,369	18,699	7,962,998	5,557,101	5,915,342,801	8,029,191,777
NEW JERSEY 2007	25,948	25,389	23,138	9,569,501	5,423,889	8,047,734,107	7,308,838,713
NEW JERSEY 2006	32,050	34,323	28,564	11,113,555	5,186,662	8,320,885,749	7,354,222,206
NEW JERSEY 2005	39,688	38,375	31,047	11,038,132	5,965,258	9,127,194,950	6,270,312,197
NEW JERSEY 2004	39,254	35,936	27,950	12,219,068	4,961,257	7,972,659,530	6,301,672,320
NEW JERSEY 2003	35,171	32,984	26,932	9,744,146	6,038,428	6,674,318,674	5,474,429,133
NEW JERSEY 2002	34,589	30,411	29,174	9,261,054	7,560,913	6,210,486,721	5,869,455,378
NEW JERSEY 2001	35,680	28,267	30,054	19,134,533	7,244,833	5,756,546,492	6,250,910,138
NEW JERSEY 2000	38,065	34,585	29,705	15,531,039	6,063,412	5,575,603,576	5,812,079,758
NEW JERSEY 1999	37,536	31,976	28,109	13,237,891	6,226,471	5,377,163,097	5,207,004,433
NEW JERSEY 1998	35,676	31,345	28,008	12,703,824	7,921,892	4,812,845,052	4,583,910,465
NEW JERSEY 1997	30,017	28,018	34,670	10,490,171	5,688,955	4,083,041,927	4,263,491,187
Atlantic County							
Absecon City	0	0	0	0	0	86,006	44,899
Atlantic City	0	2 *	0	0	0	2,484,372	1,670,913
Brigantine City	0	0	0	0	0	801,978	139,015
Buena Borough	1	0	0	0	0	123,355	0
Buena Vista Township	0	0	0	0	0	123,583	82,240
Corbin City	0	0 *	0	0	0	0	10,000
Egg Harbor City	0	2 *	0	0	0	8,000	2,243,650
Egg Harbor Township	9	5	1	0	0	1,310,479	672,199
Estell Manor City	1	0	0	0	0	160,153	32,100
Folsom Borough	0	0	0	0	0	7,275	4,000
Galloway Township	3	3	1	0	0	861,482	489,850
Hamilton Township	1	0	0	0	0	305,789	2,537,025
Hammonton Township	0	0	4	0	0	73,362	383,800
Linwood City	0	1 *	0	0	0	382,073	52,600

MUNICIPAL SUMMARY DATA, February 2013

AREA NAME	AUTHORIZED	AUTHORIZED	HOUSING	OFFICE SPACE	RETAIL SPACE	RESI-	NONRESI-
	HOUSING	HOUSING UNITS	UNITS	AUTHORIZED	AUTHORIZED	DENTIAL	DENTIAL
	UNITS	(CENSUS	CERTIFIED	BY BUILDING	BY BUILDING	(\$ AMOUNT)	(\$ AMOUNT)
		DEFINITIONS)		PERMITS	PERMITS		
Longport City	1	0	1	0	0	3,784,335	0
Margate City	6	6	2	0	0	2,854,993	334,691
Mullica City	0	1 *	0	0	0	110,136	43,050
Northfield City	0	1 *	0	0	0	55,017	34,445
Pleasantville City	0	8 *	1	0	0	112,730	260,508
Port Republic City	0	0	0	0	0	78,900	0
Somers Point City	1	1	0	0	0	145,231	30,718
Ventnor City	0	0	0	0	0	1,811,843	0
Weymouth Township	0	0	0	0	0	98,624	5,000
Bergen County							
Allendale Borough	0	0	3	0	0	398,020	41,000
Alpine Borough	0	1 *	0	0	0	65,400	150,464
Bergenfield Borough	1	0	0	0	0	1,362,185	228,593
Bogota Borough	0	1 *	0	0	0	166,507	8,750
Carlstadt Borough	0	3 *	0	0	0	153,491	252,868
Cliffside Park Borough	2	1 *	1	0	0	1,367,485	48,250
Closter Borough	1	1	1	0	0	851,339	46,050
Cresskill Borough	0	1 *	0	0	0	176,492	11,750
Demarest Borough	0	1 *	1	0	0	295,257	123,375
Dumont Borough	0	0 *	0	0	0	149,902	0
Elmwood Park Borough	No report	5 *	No report	No report	No report	No report	No report
East Rutherford Borough	0	0 *	0	0	0	87,297	1,125,875
Edgewater Borough	0	9 *	0	0	0	288,792	191,280
Emerson Borough	1	1	0	0	0	411,116	478,951
Englewood City	1	1	0	0	0	1,296,846	676,537
Englewood Cliffs Borough	1	1	2	0	0	1,210,124	44,540
Fair Lawn Borough	1	1	1	0	0	892,290	114,619
Fairview Borough	0	2 *	0	0	0	50,930	30,160
Fort Lee Borough	2	2	1	0	0	1,149,862	563,569
Franklin Lakes Borough	0	0	2	0	0	878,691	3,227,767
Garfield City	2	2	0	0	0	399,067	30,160
Glen Rock Borough	0	2 *	0	0	0	526,674	125,200
Hackensack City	0	0	0	0	0	632,381	463,859
Harrington Park Borough	0	1 *	0	0	0	241,175	19,150
Hasbrouck Heights Borough	1	1	1	0	0	352,670	42,850
Haworth Borough	1	1	0	0	0	408,974	12,100
Hillsdale Borough	0	0 *	0	0	0	212,896	13,300
Ho-Ho-Kus Borough	0	1 *	0	0	0	289,669	42,300
Leonia Borough	0	0 *	0	0	0	80,962	11,100
Little Ferry Borough	0	0	0	0	0	450,650	166,850
Lodi Borough	0	0	1	122	0	281,627	244,800
Lyndhurst Township	0	11 *	0	0	0	1,155,647	486,668
Mahwah Township	1	1	0	0	0	866,387	3,701,393
Maywood Borough	1	1	0	111,514	0	463,394	11,445,020
Midland Park Borough	0	0	0	0	0	112,795	5,850
Montvale Borough	28	0	0	0	0	4,247,720	191,128
Moonachie Borough	0	0	1	0	0	123,150	375,095
New Milford Borough	0	1 *	2	0	0	211,788	37,711
North Arlington Borough	0	0	0	0	0	189,606	45,500
Northvale Borough	0	6 *	1	0	0	46,418	106,500
Norwood Borough	1	1	0	0	0	468,739	0
Oakland Borough	0	0	3	0	0	232,657	355,732
Old Tappan Borough	0	2 *	3	0	0	235,652	525,001
Oradell Borough	0	0 *	0	0	0	397,151	55,025
Palisades Park Borough	2	2	10	0	0	889,731	74,800

MUNICIPAL SUMMARY DATA, February 2013

AREA NAME	AUTHORIZED	AUTHORIZED	HOUSING	OFFICE SPACE	RETAIL SPACE	RESI-	NONRESI-
	HOUSING	HOUSING UNITS	UNITS	AUTHORIZED	AUTHORIZED	DENTIAL	DENTIAL
	UNITS	(CENSUS	CERTIFIED	BY BUILDING	BY BUILDING	(\$ AMOUNT)	(\$ AMOUNT)
		DEFINITIONS)		PERMITS	PERMITS		
Paramus Borough	0	2	1	0	5,874	933,987	5,452,734
Park Ridge Borough	0	6 *	0	0	0	234,857	67,598
Ramsey Borough	0	2 *	1	0	0	239,526	94,789
Ridgefield Borough	0	3 *	0	0	0	88,837	456,480
Ridgefield Park Village	0	0 *	0	0	0	326,810	19,077
Ridgewood Village	0	1 *	0	0	0	1,082,549	133,030
River Edge Borough	0	1 *	0	0	0	166,101	135,714
River Vale Township	1	1	0	0	0	682,947	83,900
Rochelle Park Township	0	0	0	0	0	69,904	154,248
Rockleigh Borough	0	0	0	0	0	40,000	199,100
Rutherford Borough	0	0 *	0	0	0	472,671	41,945
Saddle Brook Township	2	11	0	0	0	863,246	347,850
Saddle River Borough	0	1 *	0	0	0	1,518,301	414,394
South Hackensack Twp	0	0	0	0	0	51,014	932,527
Teaneck Township	2	1	0	0	0	2,851,229	53,390,277
Tenafly Borough	0	0	1	0	0	731,085	46,525
Teterboro Borough	0	0	0	0	0	0	29,180
Upper Saddle River Borough	0	0 *	0	0	0	319,899	18,000
Waldwick Borough	2	2	0	0	0	605,259	229,900
Wallington Borough	2	2 *	3	0	0	300,703	0
Washington Township	1	1	0	0	0	680,689	61,700
Westwood Borough	1	1	0	0	0	799,547	501,499
Woodcliff Lake Borough	0	1 *	0	0	0	306,923	253,600
Wood-Ridge Borough	1	1	0	0	0	417,188	101,401
Wyckoff Township	0	1 *	1	0	0	823,265	304,200
Burlington County							
Bass River Township	No report	0 *	No report	No report	No report	No report	No report
Beverly City	0	0 *	0	0	0	3,130	0
Bordentown City	0	0	0	0	0	62,394	2,975
Bordentown Township	6	6	1	3,103	0	1,548,816	746,405
Burlington City	0	0	0	0	0	46,633	2,940,100
Burlington Township	5	2 *	0	0	0	730,591	835,120
Chesterfield Township	3	3	0	0	0	904,246	0
Cinnaminson Township	0	15 *	4	0	0	306,445	282,883
Delanco Township	0	0 *	0	0	0	33,421	200
Delran Township	0	0 *	0	0	0	233,226	338,630
Eastampton Township	0	0	0	0	0	76,951	26,700
Edgewater Park Township	0	0	0	0	0	61,900	29,373
Evesham Township	0	7 *	1	0	23,844	114,906	2,900,051
Fieldsboro Borough	0	0 *	0	0	0	6,601	0
Florence Township	1	1	0	0	0	231,975	1,167,309
Hainesport Township	0	0	0	0	0	80,119	272,789
Lumberton Township	0	0	1	0	0	203,533	120,860
Mansfield Township	0	2 *	0	0	0	106,507	68,700
Maple Shade Borough	0	1 *	1	0	0	131,385	71,074
Medford Township	2	2	0	0	0	718,448	66,247
Medford Lakes Borough	0	0 *	0	0	0	75,105	0
Moorestown Township	0	0	0	0	0	620,142	7,027,568
Mount Holly Township	0	0	0	0	0	114,415	13,756
Mount Laurel Township	2	0	0	0	0	1,150,356	1,150,468
New Hanover Township	No report	0 *	1	No report	No report	No report	No report
North Hanover Township	0	1 *	0	0	0	86,175	62,082
Palmyra Borough	0	0 *	0	0	0	51,457	55,800
Pemberton Borough	0	0	0	0	0	10,150	0
Pemberton Township	1	1	0	0	0	425,737	25,625

MUNICIPAL SUMMARY DATA, February 2013

AREA NAME	AUTHORIZED	AUTHORIZED	HOUSING	OFFICE SPACE	RETAIL SPACE	RESI-	NONRESI-
	HOUSING	HOUSING UNITS		AUTHORIZED	AUTHORIZED		
	UNITS	(CENSUS	UNITS	BY BUILDING	BY BUILDING	(\$ AMOUNT)	(\$ AMOUNT)
		DEFINITIONS)	CERTIFIED	PERMITS	PERMITS		
Riverside Township	0	0 *	0	0	0	83,155	5,250
Riverton Borough	0	0 *	0	0	0	24,325	0
Shamong Township	0	1 *	0	0	0	106,682	25,660
Southampton Township	0	0 *	0	0	0	49,611	1,800
Springfield Township	0	1 *	0	0	0	105,511	95,610
Tabernacle Township	0	0 *	0	0	0	201,541	103,780
Washington Township	0	0 *	0	0	0	0	3,900
Westampton Township	0	0	0	0	0	280,562	90,051
Willingboro Township	0	0	0	0	0	519,269	7,770
Woodland Township	1	0 *	0	0	0	143,000	20,000
Wrightstown Borough	No report	0 *	No report	No report	No report	No report	No report
Camden County							
Audubon Borough	0	0	0	0	0	69,846	44,500
Audubon Park Borough	0	0 *	0	0	0	1	0
Barrington Borough	0	0	0	0	0	100,361	90,987
Bellmawr Borough	0	0	0	0	0	182,816	856,400
Berlin Borough	0	0	0	0	0	87,450	314,850
Berlin Township	1	1	1	0	0	147,068	17,374
Brooklawn Borough	0	0	0	0	0	14,601	6,200
Camden City	17	0	8	0	0	1,993,077	1,495,870
Cherry Hill Township	2	11 *	14	0	0	2,161,791	685,502
Chesilhurst Borough	0	0	0	0	0	25,054	11,200
Clementon Borough	0	1 *	0	0	0	15,460	0
Collingswood Borough	0	0 *	0	0	0	942,856	1,800
Gibbsboro Borough	0	0 *	0	0	0	43,905	14,000
Gloucester City	0	1 *	0	0	0	77,862	1,500
Gloucester Township	0	0 *	0	0	0	7,816,771	11,024,716
Haddon Township	0	0 *	0	2,444	0	182,807	141,200
Haddonfield Borough	1	1	0	0	0	687,440	202,859
Haddon Heights Borough	0	1 *	0	0	0	333,972	4,949
Hi-nella Borough	No report	0 *	0	No report	No report	No report	No report
Laurel Springs Borough	0	0 *	0	0	0	20,412	12,100
Lawnside Borough	0	0	0	0	0	13,194	3,960,822
Lindenwold Borough	0	5 *	0	0	0	106,319	461,067
Magnolia Borough	0	0 *	0	0	0	113,130	12,300
Merchantville Borough	0	0 *	0	0	0	40,178	8,900
Mount Ephraim Borough	0	0 *	0	0	0	28,616	5,000
Oaklyn Borough	0	0	0	0	0	31,914	0
Pennsauken Township	0	0	0	0	0	217,111	436,509
Pine Hill Borough	0	11 *	0	0	0	46,431	42,200
Pine Valley Borough	0	0 *	0	0	0	21,150	0
Runnemede Borough	0	0	0	0	0	238,824	109,856
Somerdale Borough	6	6	1	0	0	747,778	130,580
Stratford Borough	0	0	1	0	0	49,961	14,000
Tavistock Borough	0	0 0	0	0	0	0	0
Voorhees Township	0	0 *	0	0	0	420,725	1,661,283
Waterford Township	4	4	2	0	0	623,273	27,218
Winslow Township	0	0	0	0	0	451,736	214,880
Woodlynne Borough	0	0	0	0	0	5,700	0
Cape May County							
Avalon Borough	1	1	3	0	0	1,276,772	481,176
Cape May City	0	0 *	0	0	0	598,634	141,291
Cape May Point Borough	0	0	0	0	0	10,750	14,000
Dennis Township	0	0 *	0	0	0	92,118	127,102
Lower Township	2	2	3	60	0	708,074	80,400

MUNICIPAL SUMMARY DATA, February 2013

AREA NAME	AUTHORIZED	AUTHORIZED	HOUSING	OFFICE SPACE	RETAIL SPACE	RESI-	NONRESI-
	HOUSING	HOUSING UNITS	UNITS	AUTHORIZED	AUTHORIZED	DENTIAL	DENTIAL
	UNITS	(CENSUS	CERTIFIED	BY BUILDING	BY BUILDING	(\$ AMOUNT)	(\$ AMOUNT)
		DEFINITIONS)		PERMITS	PERMITS		
Middle Township	7	8	6	0	0	1,367,365	254,202
North Wildwood City	1	0	4	0	0	351,720	44,210
Ocean City	12	12	4	0	0	4,642,046	412,756
Sea Isle City	3	3	3	0	0	1,383,855	603,246
Stone Harbor Borough	1	1	3	0	0	1,339,954	121,945
Upper Township	1	1 *	1	0	0	468,064	69,500
West Cape May Borough	1	1	0	0	0	331,585	5,000
West Wildwood Borough	0	0	0	0	0	47,402	15,100
Wildwood City	0	0	0	0	0	39,846	164,751
Wildwood Crest Borough	0	4	2	0	0	677,506	28,100
Woodbine Borough	0	0	0	0	0	7,162	27,150
Cumberland County							
Bridgeton City	0	1 *	0	0	0	47,643	4,863,025
Commercial Township	0	1 *	0	0	0	62,212	4,500
Deerfield Township	0	0 *	0	0	0	6,383	50,330
Downe Township	0	0	0	0	0	48,646	10,900
Fairfield Township	0	0	0	0	0	0	90,226
Greenwich Township	0	0 *	0	0	0	5,000	4,150
Hopewell Township	0	0 *	0	0	0	97,500	12,700
Lawrence Township	0	0	0	0	0	148,745	0
Maurice River Township	0	1 *	0	0	0	50,900	5,700
Millville City	1	3 *	1	0	0	358,722	764,701
Shiloh Borough	0	0 *	0	0	0	0	0
Stow Creek Township	1	1	0	0	0	172,500	6,725
Upper Deerfield Township	0	1 *	0	0	0	45,550	244,125
Vineland City	14	14	12	0	0	1,525,542	1,388,231
Essex County							
Belleville Town	0	0	0	0	0	1,048,946	1,239,850
Bloomfield Township	50	3	0	0	0	1,854,060	0
Caldwell Township	0	0 *	0	0	0	116,403	9,400
Cedar Grove Township	1	1	2	0	0	1,425,502	180,200
East Orange City	3	5	0	0	0	721,072	1,051,241
Essex Fells Township	0	0	0	0	0	87,199	0
Fairfield Township	0	0	0	0	0	180,647	569,286
Glen Ridge Borough	0	0 *	0	0	0	159,472	110,800
Irvington Township	0	0 *	0	0	0	339,274	172,311
Livingston Township	1	1	2	12,132	0	2,514,412	3,058,552
Maplewood Township	0	5 *	0	0	0	1,298,032	112,878
Millburn Township	7	2 *	2	0	0	3,979,119	30,476
Montclair Township	0	0	0	0	0	1,896,862	431,780
Newark City	4	6	6	733,006	0	2,897,024	131,789,788
North Caldwell Borough	0	1 *	1	0	0	639,090	0
Nutley Township	1	1	0	0	0	641,417	153,139
City of Orange Township	0	12 *	2	0	0	5,853,745	33,400
Roseland Borough	0	1 *	0	0	0	132,612	993,175
South Orange Village	0	0	0	0	0	566,101	221,239
Verona Township	0	1 *	1	0	0	316,623	65,000
West Caldwell Township	0	0 *	0	0	0	401,081	706,000
West Orange Township	0	0	0	0	0	1,019,334	5,391,016
Gloucester County							
Clayton Borough	0	0 *	0	0	0	190,743	4,795
Deptford Township	1	1	4	0	0	352,230	494,905
East Greenwich Township	4	4	3	0	0	673,076	92,284
Elk Township	0	0	0	0	0	22,050	64,751
Franklin Township	2	1	1	0	0	467,519	19,666

MUNICIPAL SUMMARY DATA, February 2013

AREA NAME	AUTHORIZED	AUTHORIZED	HOUSING UNITS CERTIFIED	OFFICE SPACE	RETAIL SPACE	RESI- DENTIAL (\$ AMOUNT)	NONRESI- DENTIAL (\$ AMOUNT)
	HOUSING UNITS	HOUSING UNITS (CENSUS DEFINITIONS)		AUTHORIZED BY BUILDING PERMITS	AUTHORIZED BY BUILDING PERMITS		
Glassboro Borough	6	6	5	0	0	853,351	65,075
Greenwich Township	0	0 *	0	0	0	81,588	540,444
Harrison Township	2	2	2	0	0	649,491	42,494
Logan Township	0	0 *	0	0	0	28,854	135,355
Mantua Township	0	48	0	2,135	0	8,318,355	172,595
Monroe Township	14	6 *	4	7,200	0	2,226,443	231,590
National Park Borough	0	0	0	0	0	16,640	0
Newfield Borough	0	0 *	0	0	0	40,795	10,000
Paulsboro Borough	0	0 *	0	0	0	26,000	9,000
Pitman Borough	0	1 *	0	0	0	134,725	16,100
South Harrison Township	0	0	0	0	0	72,683	9,075
Swedesborough Borough	0	3 *	0	0	0	0	65,286
Washington Township	0	0	0	0	0	711,352	557,120
Wenonah Borough	0	0 *	0	0	0	71,130	0
West Deptford Township	1	1	0	0	0	231,470	239,670
Westville Borough	0	0 *	0	0	0	39,299	29,200
Woodbury City	0	0 *	0	0	0	29,461	48,927
Woodbury Heights Borough	0	0	0	0	0	15,275	18,565
Woolwich Township	4	6	1	0	0	445,300	119,335
Hudson County							
Bayonne City	0	2 *	0	0	0	1,805,471	136,543
East Newark Borough	0	0	0	0	0	19,057	0
Guttenberg Town	0	0	0	0	0	39,978	56,250
Harrison Town	4	4	0	0	0	669,720	134,927
Hoboken City	0	23 *	48	0	0	2,074,031	2,089,587
Jersey City	9	8	3	0	0	12,538,884	7,718,753
Kearny Town	2	0	0	0	0	304,584	210,450
North Bergen Township	0	0 *	0	0	0	336,805	911,738
Secaucus Town	0	24 *	0	0	0	2,069,721	851,611
Union City	1	0 *	0	0	0	1,137,786	228,209
Weehawken Township	227	0	0	0	0	1,916,027	1,351,115
West New York Town	3	3	27	0	0	935,289	229,000
Hunterdon County							
Alexandria Township	0	0	0	0	0	157,731	1,000
Bethlehem Township	0	0	0	0	0	62,650	97,545
Bloomsbury Borough	0	0 *	0	0	0	0	21,300
Califon Borough	0	0	0	0	0	31,630	0
Clinton Town	0	0 *	0	0	0	64,800	551
Clinton Township	0	0	1	0	0	417,638	599,672
Delaware Township	1	1 *	1	0	0	351,144	39,400
East Amwell Township	0	1 *	0	0	0	81,015	37,895
Flemington Borough	0	5 *	0	0	21,600	99,900	1,354,100
Franklin Township	1	1	1	0	0	291,174	67,000
Frenchtown Borough	0	0	0	0	0	30,448	37,522
Glen Gardner Borough	0	0	0	0	0	8,428	7,160
Hampton Borough	0	0	0	0	0	22,000	14,825
High Bridge Borough	0	0 *	0	0	0	100	5,000
Holland Township	0	0	0	0	0	110,645	115,255
Kingwood Township	0	1 *	0	0	0	64,463	9,225
Lambertville City	0	0	0	0	0	141,516	202,250
Lebanon Borough	0	11 *	0	0	0	0	2,108
Lebanon Township	No report	1 *	No report	No report	No report	No report	No report
Milford Borough	0	0 *	0	0	0	0	48,587
Raritan Township	0	0	4	0	0	628,450	168,187
Readington Township	1	2	5	0	0	790,442	128,294

MUNICIPAL SUMMARY DATA, February 2013

AREA NAME	AUTHORIZED	AUTHORIZED	HOUSING	OFFICE SPACE	RETAIL SPACE	RESI-	NONRESI-
	HOUSING	HOUSING UNITS	UNITS	AUTHORIZED	AUTHORIZED	DENTIAL	DENTIAL
	UNITS	(CENSUS	CERTIFIED	BY BUILDING	BY BUILDING	(\$ AMOUNT)	(\$ AMOUNT)
		DEFINITIONS)		PERMITS	PERMITS		
Stockton Borough	No report	0 *	No report	No report	No report	No report	No report
Tewksbury Township	0	0	0	0	0	207,993	87,000
Union Township	0	0	0	0	0	104,060	91,574
West Amwell Township	1	1	0	0	0	274,248	28,956
Mercer County							
East Windsor Township	2	2	24	0	0	761,203	312,454
Ewing Township	0	0	1	0	0	525,305	1,843,337
Hamilton Township	0	6 *	0	0	0	146,696	1,000
Hightstown Borough	0	0	0	0	0	42,345	3,596
Hopewell Borough	0	0 *	0	0	0	154,750	74,894
Hopewell Township	1	1	0	0	0	773,080	10,633,535
Lawrence Township	0	0	0	0	0	992,609	48,292,353
Pennington Borough	0	0	0	0	0	152,090	19,600
Princeton Borough	See Princeton (C	1 *				0	0
Princeton (Consolidated 1114)	1	6 *	0	0	0	2,392,611	11,407,941
Trenton City	0	2 *	0	0	0	3,264,352	261,097
Robbinsville Township	1	0	1	0	0	536,429	1,082,202
West Windsor Township	0	0	2	0	0	1,128,654	2,539,224
Middlesex County							
Carteret Borough	0	7 *	0	0	0	1,284,072	1,959,347
Cranbury Township	0	0	0	0	0	99,249	134,154
Dunellen Borough	0	0 *	0	0	0	228,037	0
East Brunswick Township	0	0	0	0	0	1,101,552	807,484
Edison Township	0	3 *	0	0	0	282,644	314,459
Helmetta Borough	0	0	0	0	0	58,310	0
Highland Park Borough	0	5 *	1	0	0	0	312,178
Jamesburg Borough	0	0	0	0	0	32,301	27,980
Old Bridge Township	1	1	14	0	178,910	857,497	8,926,170
Metuchen Borough	3	3	0	0	0	1,073,517	198,876
Middlesex Borough	1	1 *	0	0	0	458,022	93,459
Milltown Borough	0	0 *	0	0	0	92,528	39,915
Monroe Township	13	13	34	0	0	2,908,586	197,866
New Brunswick City	0	6 *	0	0	0	1,125,074	1,657,219
North Brunswick Township	2	3	3	0	0	1,167,469	510,392
Perth Amboy City	0	0	1	0	0	1,319,818	1,249,975
Piscataway Township	1	26	2	0	0	2,086,078	2,422,125
Plainsboro Township	0	0	0	0	0	492,888	2,018,451
Sayreville Borough	0	0	4	0	0	1,465,337	128,520
South Amboy City	0	0 *	1	0	0	236,008	85,061
South Brunswick Township	6	6	2	10,205	0	2,393,075	2,071,848
South Plainfield Borough	1	1	2	9,300	0	134,550	1,566,836
South River Borough	0	0	0	0	0	956,007	56,804
Spotswood Borough	0	0 *	0	0	0	82,596	19,445
Woodbridge Township	1	0	2	0	0	1,910,456	11,714,074
Monmouth County							
Allenhurst Borough	0	0	0	0	0	81,800	31,500
Allentown Borough	0	0	0	0	0	48,332	7,985
Asbury Park City	0	0 *	0	0	0	144,966	88,720
Atlantic Highlands Borough	0	0	0	0	0	247,018	42,950
Avon-by-the-Sea Borough	0	1 *	0	0	0	116,010	7,000
Belmar Borough	0	0	1	0	0	1,114,851	330,168
Bradley Beach Borough	0	1 *	0	0	0	592,546	7,000
Brielle Borough	1	1	0	0	0	2,438,233	76,785
Colts Neck Township	0	0	1	0	0	919,534	0
Deal Borough	0	0	0	0	0	467,100	0

MUNICIPAL SUMMARY DATA, February 2013

AREA NAME	AUTHORIZED	AUTHORIZED	HOUSING	OFFICE SPACE	RETAIL SPACE	RESI- DENTIAL (\$ AMOUNT)	NONRESI- DENTIAL (\$ AMOUNT)
	HOUSING UNITS	HOUSING UNITS (CENSUS DEFINITIONS)	UNITS CERTIFIED	AUTHORIZED BY BUILDING PERMITS	AUTHORIZED BY BUILDING PERMITS		
Eatontown Borough	6	6	0	0	0	460,260	331,800
Englishtown Borough	0	0	0	0	0	20,013	74,860
Fair Haven Borough	0	0	2	0	0	287,760	1,600
Farmingdale Borough	0	0	0	0	0	9,000	2,900
Freehold Borough	0	1 *	0	0	0	127,173	101,698
Freehold Township	0	0 *	0	0	0	1,073,965	1,444,872
Highlands Borough	0	0	0	0	0	742,357	142,600
Holmdel Township	0	1 *	0	0	0	503,184	89,100
Howell Township	5	5	4	0	0	1,943,603	361,279
Interlaken Borough	0	0 *	0	0	0	24,880	0
Keansburg Borough	0	0 *	1	0	0	1,430,370	52,175
Keyport Borough	0	0 *	0	0	0	167,651	42,726
Little Silver Borough	1	1	0	0	0	744,905	119,200
Loch Arbour Village	0	0	0	0	0	141,840	8,500
Long Branch City	1	1	1	0	0	1,164,675	2,689,639
Manalapan Township	8	12 *	7	0	0	2,352,047	218,887
Manasquan Borough	1	1	0	0	0	938,326	110,075
Marlboro Township	0	0	3	0	0	1,436,589	3,267,447
Matawan Borough	0	0	0	0	0	103,260	88,200
Aberdeen Township	0	0	0	0	0	77,422	0
Middletown Township	5	4	2	0	0	3,627,233	99,089
Millstone Township	0	0	0	0	0	708,735	437,498
Monmouth Beach Borough	1	1 *	0	0	0	1,938,087	2,226,900
Neptune Township	2	0 *	0	0	0	811,001	226,136
Neptune City Borough	0	0	0	0	0	103,845	41,005
Tinton Falls Borough	No report	1 *	0	No report	No report	No report	No report
Ocean Township	9	2 *	0	0	0	3,329,074	422,590
Oceanport Borough	0	0	0	0	0	2,722,429	43,050
Hazlet Township	0	0	0	7,111	0	288,085	217,470
Red Bank Borough	1	1 *	1	0	0	208,049	715,143
Roosevelt Borough	0	0	0	0	0	8,900	0
Rumson Borough	7	5	1	0	0	4,499,617	462,650
Sea Bright Borough	No report	1 *	No report	No report	No report	No report	No report
Sea Girt Borough	0	0	0	0	0	140,887	28,100
Shrewsbury Borough	1	1	3	0	0	360,230	24,400
Shrewsbury Township	0	0	0	0	0	500	0
Lake Como Borough	0	0 *	1	0	0	230,807	0
Spring Lake Borough	1	1	1	0	0	1,050,328	43,300
Spring Lake Heights Boro	1	1	0	0	0	193,540	0
Union Beach Borough	0	0	0	0	0	680,633	0
Upper Freehold Township	1	1	0	0	0	310,095	220,599
Wall Township	1	1	1	0	0	1,034,339	547,206
West Long Branch Borough	0	6 *	0	118	0	346,915	180,250
Morris County							
Boonton Town	0	1 *	0	0	0	154,450	18,300
Boonton Township	0	1 *	0	0	0	100,335	25,000
Butler Borough	0	0	0	0	0	126,955	52,500
Chatham Borough	0	1 *	0	0	0	369,522	0
Chatham Township	0	3 *	1	0	0	848,801	61,025
Chester Borough	0	1 *	0	0	0	93,350	61,546
Chester Township	0	0	0	0	0	466,761	34,650
Denville Township	0	0	3	0	0	434,730	546,984
Dover Town	0	0	0	0	0	135,168	76,180
East Hanover Township	0	0 *	0	0	0	230,370	1,396,300
Florham Park Borough	0	3 *	1	0	0	388,283	117,385

MUNICIPAL SUMMARY DATA, February 2013

AREA NAME	AUTHORIZED	AUTHORIZED	HOUSING	OFFICE SPACE	RETAIL SPACE	RESI-	NONRESI-
	HOUSING	HOUSING UNITS	UNITS	AUTHORIZED	AUTHORIZED	DENTIAL	DENTIAL
	UNITS	(CENSUS	CERTIFIED	BY BUILDING	BY BUILDING	(\$ AMOUNT)	(\$ AMOUNT)
		DEFINITIONS)		PERMITS	PERMITS		
Hanover Township	2	2	0	0	0	1,083,744	996,814
Harding Township	0	0	0	0	0	48,801	314,585
Jefferson Township	0	1 *	1	0	0	389,406	50,432
Kinnelon Borough	0	1 *	0	0	0	391,791	1,025
Lincoln Park Borough	0	0	0	0	0	147,502	37,050
Madison Borough	0	2 *	0	0	0	671,317	771,682
Mendham Borough	0	0	0	0	0	612,295	99,079
Mendham Township	0	0	0	0	0	162,979	113,550
Mine Hill Township	0	0	0	0	0	797,695	0
Montville Township	3	3	2	0	0	1,655,519	481,800
Morris Township	0	2 *	0	0	0	1,782,886	5,062,368
Morris Plains Borough	0	6 *	0	0	0	122,372	5,100
Morristown Town	0	0	4	0	0	260,348	4,808,185
Mountain Lakes Borough	0	1 *	1	0	0	190,930	9,900
Mount Arlington Borough	0	1 *	0	0	0	212,153	0
Mount Olive Township	9	9	5	0	0	2,000,381	2,030,955
Netcong Borough	0	1 *	0	0	0	30,550	26,900
Parsippany-Troy Hills Twp	0	0 *	1	0	0	1,176,963	12,670,375
Long Hill Township	0	0	1	0	0	405,348	62,356
Pequannock Township	0	1 *	0	1	0	1,174,026	132,635
Randolph Township	1	0 *	2	0	0	944,931	267,588
Riverdale Borough	0	0	1	0	0	84,910	43,025
Rockaway Borough	0	0 *	0	0	0	53,001	69,360
Rockaway Township	0	1 *	1	0	0	489,286	801,613
Roxbury Township	0	1 *	2	1,074	0	401,891	210,696
Victory Gardens Borough	0	0	0	0	0	6,300	0
Washington Township	2	2	0	0	0	1,498,582	2,901
Wharton Borough	0	0 *	0	0	0	67,922	300
Ocean County							
Barnegat Light Borough	2	2	0	0	0	1,301,800	8,960
Bay Head Borough	0	0	1	0	0	2,491,880	87,630
Beach Haven Borough	4	4	0	0	0	1,535,265	225,800
Beachwood Borough	0	0	0	0	0	113,479	37,500
Berkeley Township	5	5	6	0	0	2,827,428	21,001
Brick Township	8	6	0	0	0	4,085,137	676,079
Toms River Township	4	12 *	3	11,856	0	3,486,532	1,820,315
Eagleswood Township	0	1 *	0	0	0	25,500	87,800
Harvey Cedars Borough	1	1	0	0	0	848,290	0
Island Heights Borough	0	0	0	0	0	128,283	99,000
Jackson Township	0	0	3	0	0	774,300	241,507
Lacey Township	5	4 *	1	0	0	1,702,744	41,234
Lakehurst Borough	0	0	0	0	0	85,090	8,000
Lakewood Township	23	21	32	0	0	4,573,718	1,330,248
Lavallette Borough	1	1	0	0	0	4,657,010	474,850
Little Egg Harbor Township	4	4	0	0	0	1,957,546	20,450
Long Beach Township	5	4	3	0	0	6,573,154	2,286,650
Manchester Township	1	0	2	0	0	589,954	181,400
Mantoloking Borough	0	0 *	0	0	0	2,314,112	31,200
Ocean Township	4	0	3	0	0	733,867	361,751
Ocean Gate Borough	0	0	0	0	0	83,686	0
Pine Beach Borough	0	0	0	0	0	56,983	0
Plumsted Township	0	1 *	1	0	0	99,611	25,000
Point Pleasant Borough	2	2 *	0	0	0	875,635	24,975
Point Pleasant Beach Boro	2	2	1	0	0	1,934,794	291,186
Seaside Heights Borough	No report	0	0	No report	No report	No report	No report

MUNICIPAL SUMMARY DATA, February 2013

AREA NAME	AUTHORIZED	AUTHORIZED	HOUSING	OFFICE SPACE	RETAIL SPACE	RESI-	NONRESI-
	HOUSING	HOUSING UNITS	UNITS	AUTHORIZED	AUTHORIZED	DENTIAL	DENTIAL
	UNITS	(CENSUS	CERTIFIED	BY BUILDING	BY BUILDING	(\$ AMOUNT)	(\$ AMOUNT)
		DEFINITIONS)		PERMITS	PERMITS		
Seaside Park Borough	1	1	0	0	0	1,734,049	69,000
Ship Bottom Borough	1	1	0	0	0	903,135	86,026
South Toms River Borough	0	0	0	0	0	20,806	55,900
Stafford Township	4	4	40	0	1,286	1,695,702	558,170
Surf City Borough	0	0	0	0	0	618,996	0
Tuckerton Borough	0	0 *	0	0	0	0	218,438
Barneget Township	11	10	0	0	0	1,689,495	159,391
Passaic County							
Bloomington Borough	0	0	1	0	0	122,477	62,000
Clifton City	0	9 *	36	0	0	2,225,773	498,999
Haledon Borough	No report	1 *	No report	No report	No report	No report	No report
Hawthorne Borough	0	0	0	0	0	288,760	141,752
Little Falls Township	0	0	0	0	0	109,288	89,085
North Haledon Borough	0	0	0	0	0	203,762	0
Passaic City	0	1 *	0	0	0	988,716	1,629,679
Paterson City	No report	1 *	No report	No report	No report	No report	No report
Pompton Lakes Borough	0	0 *	1	0	0	208,230	48,600
Prospect Park Borough	0	0 *	0	0	0	53,799	0
Ringwood Borough	0	1 *	0	0	0	177,991	72,500
Totowa Borough	0	1 *	0	0	0	86,305	177,800
Wanaque Borough	0	0	0	0	0	293,005	109,550
Wayne Township	1	1	0	0	0	2,890,334	735,487
West Milford Township	0	1 *	1	0	0	500,177	192,430
Woodland Park Borough	10	10	1	0	0	1,414,837	14,500
Salem County							
Alloway Township	0	0	0	0	0	0	27,000
Elmer Borough	No report	0	0	No report	No report	No report	No report
Elsinboro Township	0	0	0	0	0	6,185	0
Lower Alloways Creek Twp	0	0	0	0	0	1,750	15,000
Mannington Township	0	0	0	0	0	8,000	38,000
Oldmans Township	0	0	0	0	0	27,000	34,500
Penns Grove Borough	0	0	0	0	0	20,243	5,500
Pennsville Township	0	0 *	0	0	0	81,610	70,590
Pilesgrove Township	0	0	1	0	0	27,850	11,725
Pittsgrove Township	0	0	0	0	0	52,525	76,434
Quinton Township	0	0	0	0	0	4,000	10,100
Salem City	0	0	0	0	0	23,900	10,377
Carneys Point Township	0	1 *	0	0	0	110,765	126,895
Upper Pittsgrove Township	0	0	0	0	0	7,800	12,635
Woodstown Borough	0	0	0	0	0	45,500	0
Somerset County							
Bedminster Township	0	0	0	0	0	528,400	1,493,875
Bernards Township	1	1	1	0	0	1,987,018	159,336
Bernardsville Borough	0	0 *	0	0	0	1,183,611	689,520
Bound Brook Borough	0	6 *	0	0	0	86,147	28,320
Branchburg Township	0	0	0	0	0	613,076	892,109
Bridgewater Township	0	0	0	0	0	2,147,707	2,027,733
Far Hills Borough	0	0	0	0	0	2,125,429	1
Franklin Township	8	8	4	0	0	2,642,283	1,442,914
Green Brook Township	0	0	0	0	0	262,672	23,055
Hillsborough Township	4	4	1	0	0	2,561,017	843,766
Manville Borough	0	0	0	0	0	159,881	14,849
Millstone Borough	0	0	0	0	0	18,960	39,880
Montgomery Township	1	1	0	0	0	940,160	263,010
North Plainfield Borough	0	0 *	0	0	0	389,069	152,333

MUNICIPAL SUMMARY DATA, February 2013

AREA NAME	AUTHORIZED	AUTHORIZED	HOUSING	OFFICE SPACE	RETAIL SPACE	RESI-	NONRESI-
	HOUSING	HOUSING UNITS		AUTHORIZED	AUTHORIZED		
	UNITS	(CENSUS	UNITS	BY BUILDING	BY BUILDING	(\$ AMOUNT)	(\$ AMOUNT)
		DEFINITIONS)	CERTIFIED	PERMITS	PERMITS		
Peapack-Gladstone Borough	0	1 *	0	0	0	181,875	28,200
Raritan Borough	0	5 *	72	0	0	185,272	163,992
Rocky Hill Borough	0	0 *	0	0	0	0	17,299
Somerville Borough	0	0 *	0	0	0	134,465	148,535
South Bound Brook Boro	0	2 *	0	0	0	153,339	0
Warren Township	2	2	2	0	0	1,436,100	1,003,329
Watchung Borough	0	0	0	0	0	61,040	199,805
Sussex County							
Andover Borough	0	0	0	0	0	510	0
Andover Township	0	0	0	0	0	35,524	35,475
Branchville Borough	0	0	0	0	0	15,750	11,850
Byram Township	0	0 *	0	0	0	224,408	36,150
Frankford Township	1	1	0	0	0	350,415	4,300
Franklin Borough	0	0	0	0	0	94,600	70,305
Fredon Township	0	0	0	0	0	84,095	0
Green Township	0	1 *	0	0	0	49,300	58,403
Hamburg Borough	0	0	0	0	0	89,899	4,415
Hampton Township	0	0 *	0	0	0	39,560	317,000
Hardyston Township	0	0	1	0	0	112,988	137,805
Hopatcong Borough	0	1 *	0	0	0	514,071	5,416,350
Lafayette Township	0	0	0	0	0	21,700	1,200
Montague Township	1	1	0	0	0	84,793	10,000
Newton Town	0	0	0	0	0	113,424	148,419
Ogdensburg Borough	0	0	0	0	0	61,650	16,150
Sandyston Township	0	0	0	0	0	14,275	0
Sparta Township	0	3 *	0	0	0	1,105,464	365,741
Stanhope Borough	0	0 *	0	0	0	41,362	600,000
Stillwater Township	0	1 *	1	0	0	61,609	0
Sussex Borough	0	0	0	0	0	23,907	1
Vernon Township	0	1 *	0	0	0	317,938	81,900
Walpack Township	No report	0	No report	No report	No report	No report	No report
Wantage Township	1	1	0	0	0	489,176	166,467
Union County							
Berkeley Heights Township	2	2	0	0	0	556,115	43,910
Clark Township	0	1 *	0	0	0	467,316	376,472
Cranford Township	0	1 *	2	9,113	0	800,509	924,603
Elizabeth City	No report	7 *	No report	No report	No report	No report	No report
Fanwood Borough	1	1	2	0	0	537,579	111,501
Garwood Borough	0	7 *	0	4,341	0	110,564	296,900
Hillside Township	0	0 *	0	0	0	373,714	75,300
Kenilworth Borough	2	2	0	0	0	749,376	645,903
Linden City	49	49	1	0	0	2,248,503	1,787,131
Mountainside Borough	0	0 *	0	0	0	906,925	89,883
New Providence Borough	0	2 *	0	0	0	787,945	68,131
Plainfield City	15	0 *	0	0	0	2,215,008	33,663
Rahway City	0	0	1	0	0	1,436,763	723,359
Roselle Borough	0	0	0	0	0	367,445	35,500
Roselle Park Borough	0	1 *	0	0	0	316,461	18,300
Scotch Plains Township	0	1 *	1	0	0	1,263,862	100
Springfield Township	1	12 *	8	0	0	1,147,218	537,045
Summit City	0	0	1	0	0	2,626,936	556,500
Union Township	0	0	1	0	0	871,634	711,307
Westfield Town	0	2 *	0	0	0	1,521,749	78,715
Winfield Township	0	0	0	0	0	17,200	0
Warren County							

MUNICIPAL SUMMARY DATA, February 2013

AREA NAME	AUTHORIZED	AUTHORIZED	HOUSING	OFFICE SPACE	RETAIL SPACE	RESI-	NONRESI-
	HOUSING	HOUSING UNITS	UNITS	AUTHORIZED	AUTHORIZED	DENTIAL	DENTIAL
	UNITS	(CENSUS	CERTIFIED	BY BUILDING	BY BUILDING	(\$ AMOUNT)	(\$ AMOUNT)
		DEFINITIONS)		PERMITS	PERMITS		
Allamuchy Township	0	0	1	0	0	0	61,417
Alpha Borough	0	0	0	0	0	101,498	4,000
Belvidere Town	0	0 *	0	0	0	50,050	500
Blairstown Township	0	0	0	0	0	51,402	9,550
Franklin Township	0	0	0	0	0	54,280	3,000
Frelinghuysen Township	0	0 *	0	0	0	650	35,722
Greenwich Township	0	0	0	1	0	35,049	23,224
Hackettstown Town	0	3 *	0	0	0	27,080	125,034
Hardwick Township	0	0	0	0	0	21,100	31,800
Harmony Township	0	0	0	0	0	18,000	42,444
Hope Township	0	0	0	0	0	75,815	100
Independence Township	0	1 *	0	0	0	63,700	9,000
Knowlton Township	0	0	0	0	0	48,817	12,500
Liberty Township	0	0	0	0	0	44,227	500
Lopatcong Township	1	5 *	1	0	0	1,255,689	37,550
Mansfield Township	0	0	0	0	0	131,305	35,000
Oxford Township	0	0	0	0	0	28,895	34,058
Pahaquary Township	See Hardwick Twp.						
Phillipsburg Town	0	0 *	0	0	0	163,472	126,281
Pohatcong Township	0	0 *	0	0	0	6,438	199
Washington Borough	6	6	0	0	0	830,582	12,180
Washington Township	0	0	0	0	1	239,728	91,250
White Township	0	0	0	0	0	143,121	154,340
State Buildings	0		0	0	0	0	23,022,108

The New Jersey
CONSTRUCTION REPORTER

FEBRUARY 2013 DATA

DISTRIBUTED BY THE

New Jersey Department of
COMMUNITY AFFAIRS
DIVISION OF CODES AND STANDARDS
101 South Broad Street,
PO Box 802
Trenton, NJ 08625-0802
(609) 292-7898
www.nj.gov/dca/divisions/codes/reporter/



In cooperation with the
STATE DATA CENTER of the
NEW JERSEY DEPARTMENT OF LABOR AND
WORKFORCE DEVELOPMENT

Production and Distribution Staff

RICHARD BYRNE
CYNTHIA CORDERO
LYNN FERRARA
AMY FENWICK FRANK
JOHN LAGO
CHARLES PIERSON, JR.
ANTHONY SCHIAVINO
SUSAN WOIDILL

2013