

The New Jersey
**CONSTRUCTION
REPORTER**

AUGUST 2013 DATA

CHRIS CHRISTIE, Governor
STATE OF NEW JERSEY

RICHARD E. CONSTABLE III, Commissioner
DEPARTMENT OF COMMUNITY AFFAIRS

EDWARD M. SMITH, Director
DIVISION OF CODES AND STANDARDS

DISTRIBUTED BY THE

New Jersey Department of
COMMUNITY AFFAIRS
DIVISION OF CODES AND STANDARDS
101 South Broad Street,
PO Box 802
Trenton, NJ 08625-0802
www.nj.gov/dca/divisions/codes/reporter/



THE NEW JERSEY CONSTRUCTION REPORTER

TABLE OF CONTENTS

Contents	Description	Pages
INTRODUCTION		
Highlights	Analysis of data in this month's report	i-iv
Foreword	Background information	1
Exhibits A - C	Definition of terms used throughout the tables	2 - 4
RESIDENTIAL CONSTRUCTION		
Tables 1 - 6	Housing units authorized and certified, housing units demolished, monthly and year-to-date figures	5 - 14
OFFICE SPACE		
Tables 7 - 8	Square feet of office space authorized and certified, monthly and year-to-date figures	15 - 19
RETAIL SPACE		
Tables 9 - 10	Square feet of retail space authorized and certified, monthly and year-to-date figures	20 - 24
DOLLAR AMOUNTS		
Tables 11 - 13	Dollar amount of construction authorized by county and top municipalities, monthly and year to date; dollar amount of construction authorized by use group and permit type, New Jersey totals, monthly and year to date	25 - 30
MUNICIPAL SUMMARY DATA		
	Housing units authorized and certified, office and retail space authorized, and dollar amount of construction authorized by municipality, monthly totals	MSD-1 - MSD-12
ILLUSTRATIONS		
Map 1	Housing units authorized by municipality, year to date	9
Map 2	Office space authorized by municipality, year to date	18
Map 3	Retail space authorized by municipality, year to date	23
Map 4	Estimated cost of construction authorized by municipality, year to date	28

AUGUST 2013 HIGHLIGHTS

- The dollar amount of construction authorized by building permits in August was \$1.244 billion. The last time activity was this high was three months ago, May 2013, when authorized work was \$1.275 billion. The time before that was more than five years ago, June 2008, when work totaled \$1.282 billion.
- August activity is based on permit reports from 548 of New Jersey's 565 municipalities.
- New construction accounted for \$609.1 million, or 49 percent of all authorized construction. Residential work totaled \$595.9 million (47.9 percent); office, retail, and other nonresidential activity totaled \$648.1 million (52.1 percent).
- The City of Newark in Essex County led all municipalities with \$179 million. Nearly \$152 million was for work begun in February on the new Prudential Insurance office building. The City's construction office expects total costs on the 733,000 square foot headquarters to exceed \$300 million. This will make it the largest new project thus far in 2013.
- Hoboken ranked second among municipalities with \$73.9 million of work in August. The big development in this Hudson County city was Park Place, a 12 story, mixed-use building with commercial space and 212 luxury condominiums. The estimated cost of work is \$67.5 million. Hoboken had 223 authorized dwellings in August, more than any other locality.
- Construction in Paramus Borough (Bergen County) totaled \$29.5 million. Renovations to the Garden State Plaza shopping mall accounted for \$23.2 million.
- State Buildings had \$52.1 million of work in August. \$42.9 million of this was for a new center for environmental and life sciences at Montclair State University. Next month, Montclair State University will break ground on a new business school, which is expected to have an estimated cost of \$47.7 million.

Year-to-Date

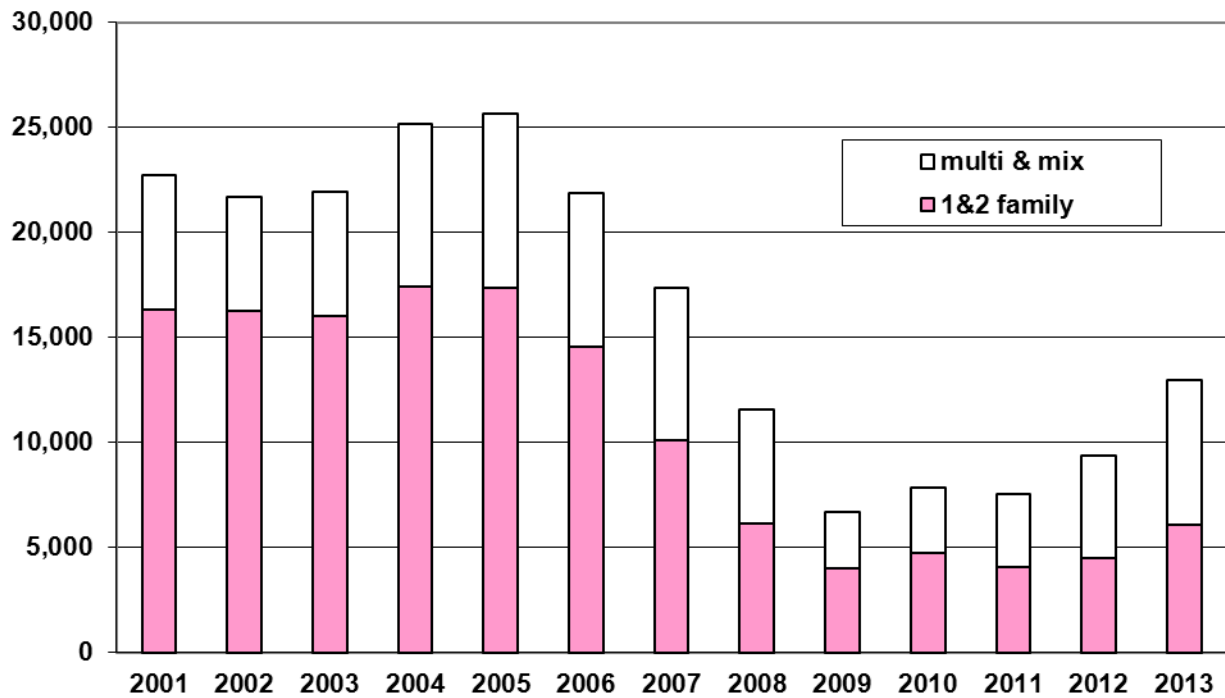
- The dollar amount of construction between January and August 2013 is \$1.324 billion more than this time last year. This is an increase of 17.7 percent.
- New home construction also is significantly higher than last year at this time. Between January and August 2013, New Jersey municipalities issued building permits for 12,973 new dwellings; this was 38.2 percent more than last year at this time.
- Office and retail construction remain sluggish. New office space is down by 34.6 percent, while new retail space is down by 26.5 percent compared to last year.

Major Construction Indicators, New Jersey: Year-to-Date Trends				
Period	Estimated Cost of Construction	Authorized Housing Units	Authorized Office Space (square feet)	Authorized Retail Space (square feet)
Jan – August 2013	\$8,787,643,928	12,973	3,379,548	1,177,279
Jan – August 2012	7,463,637,436	9,387	5,164,501	1,602,605
Jan – August 2011	7,338,959,063	7,563	3,604,894	1,203,938
Jan – August 2010	6,477,115,400	7,823	3,603,879	1,593,867
Jan – August 2009	6,433,888,059	6,667	2,409,405	1,573,697
Jan – August 2008	9,881,873,384	11,584	5,145,483	4,826,935
Jan – August 2007	10,024,136,462	17,371	6,137,178	2,942,040
Jan – August 2006	10,450,657,277	21,884	7,315,171	4,375,293
Jan – August 2005	9,875,901,592	25,615	7,349,034	4,920,026
Jan – August 2004	8,864,794,829	25,153	7,191,451	3,603,455
<i>Difference Between 2012 and 2013 year to date</i>				
2012 - 2013	\$1,324,006,492.0	3,586	-1,784,953	-425,326
Percent Change	17.7%	38.2%	-34.6%	-26.5%
<i>Difference Between 2011 and 2012 year to date</i>				
2011 - 2012	\$124,678,373	1,824	1,559,607	398,667
Percent Change	1.7%	24.1%	43.3%	33.1%
<i>Difference Between 2010 and 2011 year to date</i>				
2010 - 2011	\$861,843,663	-260	1,015	-389,929
Percent Change	13.3%	-3.3%	0.0%	-24.5%
Source: N.J. Department of Community Affairs, 10/7/13				

- New Jersey's two largest cities, Newark and Jersey City, had the most construction between January and August. Newark ranks at the top with \$434.3 million. Jersey City has \$413.5 million.
- New offices account for most of the work in Newark. In addition to the Prudential Insurance building, the other big office development is for Panasonic Electronics.
- Housing accounts for more than half of the work in Jersey City. Between January and August, Jersey City's construction office issued building permits for 1,121 new dwellings, more than any other municipality. The City of Weehawken, also in Hudson County, ranks second with 742 authorized dwellings.
- Princeton and Robbinsville, both in Mercer County, had \$169.7 million and \$139.4 million of activity, respectively.
- Much of the work in Princeton is for new apartments. The recently consolidated municipality had 452 authorized dwellings through August, ranking third among all localities.
- The big development in Robbinsville is a new warehouse for internet retailer Amazon.com. The warehouse's floor area exceeds 1.9 million square feet.

- More than half (53.3 percent) of the 12,973 dwelling units authorized by permits between January and August 2013 are attached to other dwellings or in buildings with office, retail, and other commercial space. This is a departure in the type of housing that was built. Detached, single-family houses account for less than half of the new dwellings authorized for construction.

Authorized Housing Units, Jan-Aug. 2001-13



THE NEW JERSEY CONSTRUCTION REPORTER contains statistics on construction activity in New Jersey. Information in the report comes from construction officials who administer the State Uniform Construction Code (UCC) (N.J.A.C. 5:23-1 et seq.) in New Jersey's 566 municipalities.

Each month, construction officials send to the New Jersey Department of Community Affairs (DCA) reports on the permits and certificates they issue. Permits authorize the start of construction and cover four types of activity: (1) New construction permits authorize the start of a new structure. (2) Permits for additions refer to work that will add space (volume and square feet) to an existing building. (3) Alterations also involve existing structures, but the work authorized will not add space. Typically, construction officials issue permits for alterations when the work is subject to one or more of the UCC's major subcodes (building, electrical, plumbing, fire protection). (4) Demolition permits authorize the removal of a building or some other structure. The *CONSTRUCTION REPORTER* identifies only those demolitions that will result in the loss of housing.

In addition to permits, the *CONSTRUCTION REPORTER* has information on the certificates issued by construction officials. While permits authorize the start of construction, certificates are issued for work completed and ready for occupancy. Each month, the *CONSTRUCTION REPORTER* will report on the number of housing units and the amount of office and retail space authorized for construction, along with the number of housing units and the amount of office and retail space completed.

Data Comparability

The *CONSTRUCTION REPORTER* contains information on authorized housing units that is tabulated two different ways. The DCA tabulates Tables 1 through 3 and Tables 8 through 13 based on the use of buildings, defined in "groups" by New Jersey's UCC. Exhibit B on page 3 summarizes these groups.

Tables 4, 5, and 6 show authorized housing units as defined and tabulated by the United States Census Bureau. The New Jersey Department of Labor and Workforce Development prepares these tables for publication in the *CONSTRUCTION REPORTER*. Exhibit C on page 4 describes the housing definitions used by the Census Bureau.

The DCA series and the Census Bureau series on authorized housing units differ two important ways. First, the DCA series includes housing units created as a result of permits issued to alter or make additions to existing structures. The Census Bureau counts only those housing units authorized from permits issued for new construction.

Second, the Census Bureau imputes data for localities that fail to submit monthly reports on time. An asterisk in the Census column of data appearing in the Municipal Summary Data table at the back of the *CONSTRUCTION REPORTER* indicates those towns with imputed data. The Census Bureau bases these imputations on historic trends. The DCA series shows information for only those towns that submitted monthly reports. If a municipality failed to submit a monthly report on time, "No report" appears in the appropriate columns in the Municipal Summary Data table.

Additional Terms

A number of other terms appear in the tables throughout the *CONSTRUCTION REPORTER*. Exhibit A on page 2 defines additional construction permit and certificate terms.

Exhibit A

Summary of Building Permit and Certificate Terms	
Addition	Permit type issued for construction work that adds space (volume and square feet) to an existing structure.
Alteration	Permit type involving one or more subcodes (building, electrical, fire protection, and plumbing). The work is authorized for an existing structure and does not add new space.
Certificate	A document issued by a construction official indicating completion of work for which a permit was issued.
Dollar Amount of Construction	Estimated cost of work, as reported by the permit applicant to the construction official.
Demolition	Permit type authorizing the demolition of an existing structure.
Housing Units Certified	A rental or for-sale unit completed and certified by the construction official for conforming to the standards in the New Jersey UCC.
Housing Units Authorized by Building Permits	A rental or for-sale dwelling unit authorized by a construction permit. See Exhibits B and C for explanations of the different definitions of housing structures. The Table 1 series and Tables 2 and 3 show housing units as classified by the residential use groups defined in Exhibit B. Tables 4, 5, and 6 identify authorized housing as defined by the U.S. Census Bureau. (See Exhibit C.)
Housing Unit Demolitions	Rental or for-sale housing to be demolished, as reported to the construction official by permit applicants.
New Construction	Permit type authorizing the start of a new structure.
Permit	A document issued by construction officials that authorizes the construction of a new structure or an addition, alteration, or demolition of an existing structure.
Square Feet	Estimated building area, as reported on permits for new construction and additions.
State Buildings	Buildings or structures constructed or owned by the State or any of its instrumentalities. Construction activity reported in this category includes State offices, colleges, hospitals, prisons, facilities operated by New Jersey Transit and the New Jersey Sports and Exposition Authority, and other State authorities.

Exhibit B

Building Groups	
Residential	Buildings where members of households live. Examples of residential groups include: one- and two-family houses (R-3 and R-5); apartments, dormitories, other multifamily houses (R-2); and mixed-use housing, where the house is a relatively smaller part of a building that has another use (e.g., an apartment over a store). Therapeutic residences (R-4) for 6 to 16 occupants are also included in this category. The Table 1 series and Tables 2 and 3 show authorized housing units by group definition.
----- The following groups refer to industrial, commercial, and other nonresidential structures. -----	
Assembly	Structures where people gather for civic, social, or religious purposes. Examples include: theaters and concert halls (group A-1); night clubs, dance halls, casino gaming areas, restaurants, taverns, and bars (A-2); churches, libraries, amusement arcades, community halls, gymnasiums, indoor swimming pools, art galleries, and museums (A-3); arenas, skating rinks, swimming pools, tennis courts (A-4); and grandstands, bleachers stadiums, and amusement park structures (A-5).
Business	Office buildings (group B) for business transactions of all kinds including banks, corporate offices, professional offices, government buildings, beauty shops, motor vehicle showrooms, and out-patient clinics.
Educational	Buildings for educational purposes through the 12th grade (group E).
High Hazard	Buildings used to manufacture, process, or store materials that constitute a high fire, explosion, or health hazard (group H).
Hotels, Motels, Guest Houses	Buildings for shelter and sleeping where the primary occupants use the facility on a temporary basis, staying less than 30 days (group R-1).
Industrial	Factory buildings where the occupants make, process, or assemble products that are not highly combustible, flammable, or explosive. Includes automotive, appliance, and furniture manufacturers; electric power plants; food processing plants; foundries; and water pumping, solid waste disposal, and incineration plants (group F).
Institutional	Buildings for people who suffer from physical limitations because of age or health; buildings for people detained for penal or correction purposes. Includes: supervised residential homes for six or more people (group I-1); medical and nursing-care facilities (I-2); jails, reformatories, and asylums (I-3); and day care for six or more occupants (I-4).
Mercantile	Buildings for display and sale purposes. Includes retail stores, automotive service stations, drug stores, shops, salesrooms, and markets (group M).
Storage	Buildings used to store goods that are not highly combustible or explosive. Includes warehouses, open parking garages, lumberyards, livestock shelters, and mausoleums (group S).
Signs, Fences, Miscellaneous	Accessory buildings and miscellaneous structures including fences over six feet in height, signs, private garages, sheds, agricultural buildings, carports, retaining walls, tanks, and swimming pools (group U).

Exhibit C

Residential Structures (U.S. Census Bureau Definitions)

Tables 4, 5, and 6 show authorized housing units based on the structure types defined below by the U.S. Census Bureau. The number of units shown in these tables refers to those authorized by building permits issued for new construction only.

Single-Family Houses

Include all detached one-family houses and all attached one-family houses separated by a wall that extends from ground to roof with no common heating system or inter-structural public utilities. Include prefabricated, sectionalized, panelized, and modular homes that are manufactured partially off site, but are transported and assembled at the construction site.

Two-Family Buildings

Include all buildings with two housing units that may be above one another or side by side. If built side by side, the structures (1) do not have a wall that extends from ground to roof; or (2) share a heating system; or (3) have inter-structural public utilities, such as water supply and sewage disposal.

Three- and Four-Family Buildings

Include all buildings with three or four housing units. If built side by side, the structures (1) do not have a wall that extends from ground to roof; or (2) share a heating system; or (3) have inter-structural public utilities, such as water supply and sewage disposal.

Five-or-More-Family Buildings

Include all buildings with five or more housing units. If built side by side, the structures (1) do not have a wall that extends from ground to roof; or (2) share a heating system; or (3) have inter-structural public utilities, such as water supply and sewage disposal.

Private Housing Units

Housing owned by a private company or individual during the period of construction. This includes all housing built by nonprofit organizations and "turnkey" housing; for example, housing that will be sold to a local public housing authority when completed.

Public Housing Units

Housing owned by a governmental body during the period of construction.

Table 1a HOUSE 10/7/13

Housing Units Authorized by Building Permits: New Jersey Counties, August 2013								
County	August				Year-to-Date			
	Total	1 & 2 Family	Multifamily	Mixed Use	Total	1 & 2 Family	Multifamily	Mixed Use
ATLANTIC	48	40	8	0	240	226	9	5
BERGEN	86	32	54	0	1,017	378	638	1
BURLINGTON	38	37	0	1	361	281	79	1
CAMDEN	102	18	84	0	409	150	141	118
CAPE MAY	44	44	0	0	391	370	17	4
CUMBERLAND	9	9	0	0	99	97	0	2
ESSEX	27	26	0	1	584	188	395	1
GLOUCESTER	99	33	66	0	482	370	112	0
HUDSON	318	14	304	0	2,557	126	2,427	4
HUNTERDON	3	3	0	0	46	46	0	0
MERCER	25	5	20	0	708	87	621	0
MIDDLESEX	170	68	102	0	886	563	315	8
MONMOUTH	121	118	2	1	847	760	81	6
MORRIS	37	25	12	0	667	261	405	1
OCEAN	326	318	6	2	1,392	1,306	80	6
PASSAIC	29	5	24	0	567	98	469	0
SALEM	4	4	0	0	25	25	0	0
SOMERSET	82	33	49	0	827	365	462	0
SUSSEX	11	11	0	0	48	38	10	0
UNION	236	26	138	72	720	219	428	73
WARREN	1	1	0	0	100	99	0	1
STATE BUILDINGS*	0	0	0	0	0	0	0	0
NEW JERSEY	1,816	870	869	77	12,973	6,053	6,689	231
NJ August 2012	1,081	605	473	3	9,376	4,489	4,865	22

The definition of housing units in the Table 1 series and Table 2 do not match those in Tables 4, 5, and 6. See "Data Comparability" section on page 1, and Exhibits B and C on pages 3 and 4 for details.

*State buildings refer to structures owned or constructed by the State or any of its instrumentalities. See Exhibit A, Summary of Building Permit and Certificate Terms, on page 2.

Table 1b HSEMUN1 10/7/13

Housing Units Authorized by Building Permits: Top Municipalities, August 2013						
Rank	Municipality	County	Total	1 & 2 Family	Multifamily	Mixed Use
1	Hoboken City	Hudson	223	0	223	0
2	Rahway City	Union	117	1	116	0
3	Lakewood Township	Ocean	102	96	6	0
4	Woodbridge Township	Middlesex	80	3	77	0
5	Garwood Borough	Union	72	0	0	72
6	Bayonne City	Hudson	63	9	54	0
7	Woolwich Township	Gloucester	58	3	55	0
8	Toms River Township	Ocean	58	58	0	0
9	Elmwood Park Borough	Bergen	56	2	54	0
10	Raritan Borough	Somerset	48	0	48	0
11	Cherry Hill Township	Camden	41	4	37	0
12	Stafford Township	Ocean	39	39	0	0
13	Monroe Township	Middlesex	34	34	0	0
14	Jersey City	Hudson	32	5	27	0
15	Elizabeth City	Union	32	10	22	0
16	Lindenwold Borough	Camden	24	0	24	0
17	East Brunswick Township	Middlesex	24	0	24	0
18	Pine Hill Borough	Camden	23	0	23	0
19	Howell Township	Monmouth	23	23	0	0
20	Little Egg Harbor Township	Ocean	23	22	0	1
	TOP MUNICIPALITIES		1,172	309	790	73
	NEW JERSEY		1,816	870	869	77
	TOP AS % OF STATE		64.5%	35.5%	90.9%	94.8%

The definition of housing units in the Table 1 series and Table 2 do not match those in Tables 4, 5, and 6. See "Data Comparability" section on page 1, and Exhibits B and C on pages 3 and 4 for details.

Table 1c HSEMUN2 10/7/13

Housing Units Authorized by Building Permits: Top Municipalities, January through August 2013						
Rank	Municipality	County	Total	1 & 2 Family	Multifamily	Mixed Use
1	Jersey City	Hudson	1,121	49	1,072	0
2	Weehawken Township	Hudson	742	0	742	0
3	Princeton (1114)	Mercer	452	10	442	0
4	Lakewood Township	Ocean	345	325	20	0
5	Monroe Township	Middlesex	299	299	0	0
6	Bayonne City	Hudson	295	37	258	0
7	Morristown Town	Morris	270	2	268	0
8	Lyndhurst Township	Bergen	269	11	258	0
9	Hoboken City	Hudson	256	9	247	0
10	Bound Brook Borough	Somerset	241	1	240	0
11	Franklin Township	Somerset	215	113	102	0
12	Elizabeth City	Union	213	58	154	1
13	Toms River Township	Ocean	190	189	0	1
14	Woolwich Township	Gloucester	175	80	95	0
15	Bloomington Borough	Passaic	168	0	168	0
16	Trenton City	Mercer	148	0	148	0
17	City of Orange Township	Essex	146	2	144	0
18	Ocean City	Cape May	144	141	0	3
19	Newark City	Essex	143	8	135	0
20	Stafford Township	Ocean	136	112	24	0
	TOP MUNICIPALITIES		5,968	1,446	4,517	5
	NEW JERSEY		12,973	6,053	6,689	231
	TOP AS % OF STATE		46.0%	23.9%	67.5%	2.2%

The definition of housing units in the Table 1 series and Table 2 do not match those in Tables 4, 5, and 6. See "Data Comparability" section on page 1, and Exhibits B and C on pages 3 and 4 for details.

Table 1d NEWHSE 10/7/13

Housing Units Authorized by New Construction Building Permits: New Jersey Counties, August 2013								
County	August				Year-to-Date			
	Total	1 & 2 Family	Multifamily	Mixed Use	Total	1 & 2 Family	Multifamily	Mixed Use
ATLANTIC	47	39	8	0	228	216	9	3
BERGEN	85	31	54	0	921	372	548	1
BURLINGTON	37	37	0	0	357	280	77	0
CAMDEN	99	15	84	0	367	142	107	118
CAPE MAY	44	44	0	0	374	356	17	1
CUMBERLAND	6	6	0	0	80	80	0	0
ESSEX	27	26	0	1	583	187	395	1
GLOUCESTER	99	33	66	0	474	366	108	0
HUDSON	318	14	304	0	2,465	118	2,343	4
HUNTERDON	3	3	0	0	46	46	0	0
MERCER	25	5	20	0	708	87	621	0
MIDDLESEX	168	66	102	0	841	522	313	6
MONMOUTH	118	115	2	1	837	750	81	6
MORRIS	37	25	12	0	664	259	405	0
OCEAN	308	300	6	2	1,348	1,262	80	6
PASSAIC	28	4	24	0	565	96	469	0
SALEM	3	3	0	0	24	24	0	0
SOMERSET	82	33	49	0	826	364	462	0
SUSSEX	11	11	0	0	48	38	10	0
UNION	236	26	138	72	710	218	419	73
WARREN	1	1	0	0	99	99	0	0
STATE BUILDINGS*	0	0	0	0	0	0	0	0
NEW JERSEY	1,782	837	869	76	12,565	5,882	6,464	219
NJ August 2012	1,074	599	473	2	9,274	4,419	4,838	17

The definition of housing units in the Table 1 series and Table 2 do not match those in Tables 4, 5, and 6. See "Data Comparability" section on page 1, and Exhibits B and C on pages 3 and 4 for details.

*State buildings refer to structures owned or constructed by the State or any of its instrumentalities. See Exhibit A, Summary of Building Permit and Certificate Terms, on page 2.

Housing Units Authorized by Building Permits, January-August 2013

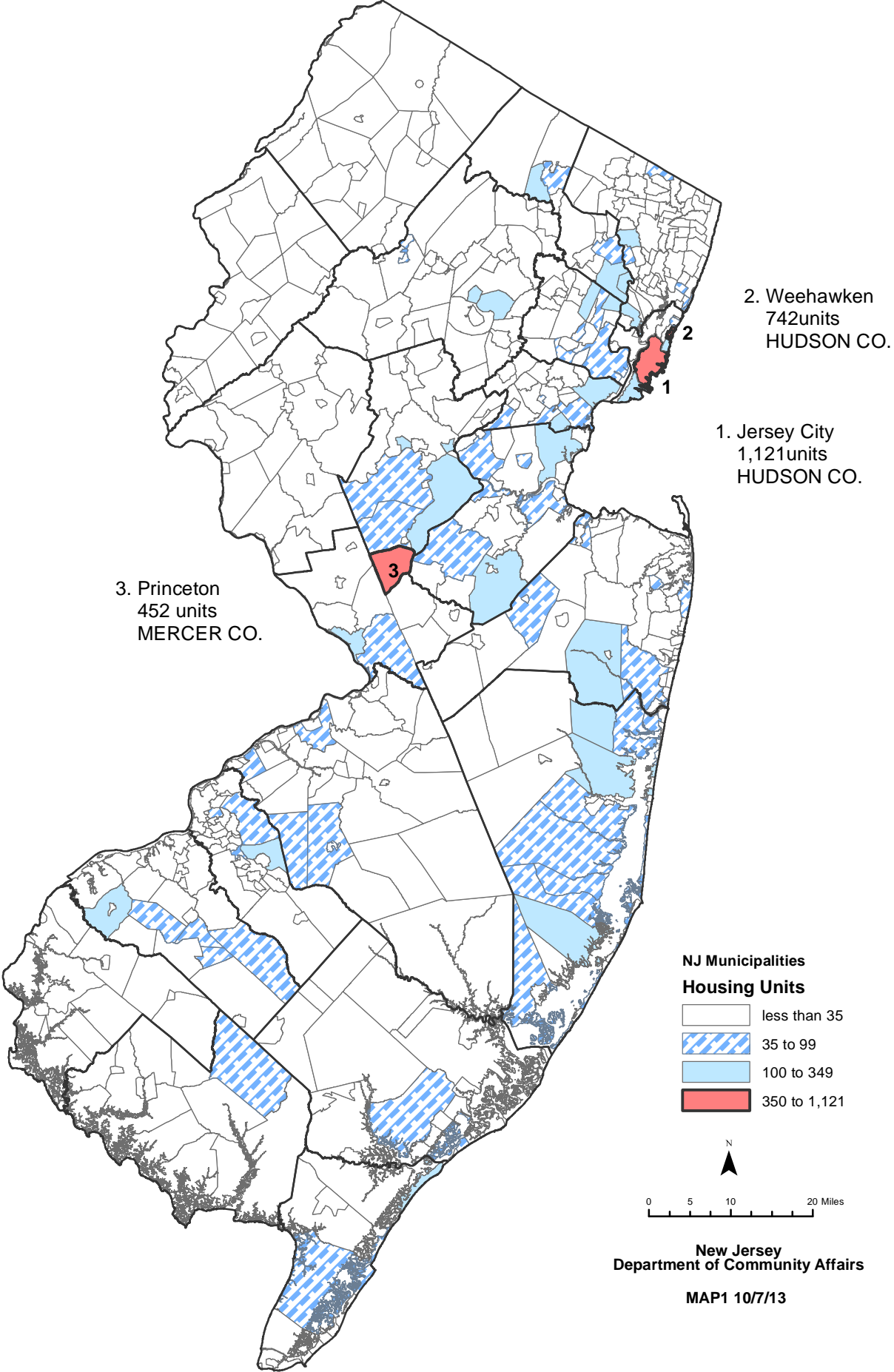


Table 2 CERTS 10/7/13

Housing Units Certified: New Jersey Counties, August 2013								
County	August				Year-to-Date			
	Total	1 & 2 Family	Multi-family	Mixed Use	Total	1 & 2 Family	Multi-family	Mixed Use
ATLANTIC	34	34	0	0	222	218	2	2
BERGEN	77	45	32	0	566	304	259	3
BURLINGTON	24	21	3	0	240	230	10	0
CAMDEN	99	25	74	0	399	124	275	0
CAPE MAY	54	53	1	0	374	357	12	5
CUMBERLAND	16	16	0	0	96	96	0	0
ESSEX	39	36	3	0	323	162	161	0
GLOUCESTER	45	45	0	0	315	293	22	0
HUDSON	495	136	359	0	794	188	606	0
HUNTERDON	11	9	1	1	72	49	22	1
MERCER	27	9	18	0	385	61	324	0
MIDDLESEX	74	50	24	0	785	410	375	0
MONMOUTH	123	81	42	0	603	404	196	3
MORRIS	41	35	6	0	312	224	86	2
OCEAN	119	116	3	0	862	648	212	2
PASSAIC	20	4	16	0	183	45	137	1
SALEM	3	3	0	0	28	28	0	0
SOMERSET	23	23	0	0	654	151	502	1
SUSSEX	17	7	10	0	71	44	25	2
UNION	24	15	9	0	256	121	135	0
WARREN	11	11	0	0	71	71	0	0
STATE BUILDINGS*	0	0	0	0	0	0	0	0
NEW JERSEY	1,376	774	601	1	7,611	4,228	3,361	22
NJ August 2012	1,170	583	582	5	7,522	4,144	3,355	23

The definition of housing units in the Table 1 series and Table 2 do not match those in Tables 4, 5, and 6. See "Data Comparability" section on page 1, and Exhibits B and C on pages 3 and 4 for details.

*State buildings refer to structures owned or constructed by the State or any of its instrumentalities. See Exhibit A, Summary of Building Permit and Certificate Terms, on page 2.

Table 3 DEMOS10/7/13

Housing Units Demolished: New Jersey Counties, August 2013								
County	August				Year-to-Date			
	Total	1 & 2 Family	Multifamily	Mixed Use	Total	1 & 2 Family	Multifamily	Mixed Use
ATLANTIC	15	15	0	0	168	156	7	5
BERGEN	44	42	1	1	256	245	6	5
BURLINGTON	6	6	0	0	38	37	0	1
CAMDEN	19	19	0	0	121	121	0	0
CAPE MAY	18	16	2	0	299	285	14	0
CUMBERLAND	6	6	0	0	53	45	4	4
ESSEX	23	16	6	1	128	100	27	1
GLOUCESTER	5	5	0	0	36	36	0	0
HUDSON	24	24	0	0	108	92	16	0
HUNTERDON	4	3	0	1	14	13	0	1
MERCER	11	11	0	0	103	103	0	0
MIDDLESEX	17	17	0	0	157	151	4	2
MONMOUTH	66	63	0	3	551	520	20	11
MORRIS	27	27	0	0	140	139	0	1
OCEAN	373	373	0	0	2,251	2,223	6	22
PASSAIC	22	22	0	0	96	77	17	2
SALEM	0	0	0	0	8	8	0	0
SOMERSET	17	17	0	0	45	45	0	0
SUSSEX	4	4	0	0	28	27	0	1
UNION	15	15	0	0	107	98	6	3
WARREN	2	2	0	0	28	28	0	0
STATE BUILDINGS*	0	0	0	0	0	0	0	0
NEW JERSEY	718	703	9	6	4,735	4,549	127	59
NJ August 2012	228	203	24	1	1,961	1,658	248	55

*State buildings refer to structures owned or constructed by the State or any of its instrumentalities. See Exhibit A, Summary of Building Permit and Certificate Terms, on page 2.

Table 4

Residential Construction Authorized by Building Permits (Census Definitions)New Jersey, August 2013						
Type of Construction	July 2013	August 2013	Year to Date*			
			2012	2013	Change	
					Number	Percent
Total Private Units Authorized	2,245	2,686	11,420	15,820	4,400	38.5
Single Family	990	878	4,744	6,348	1,604	33.8
Two Family	66	50	386	452	66	17.1
Three or Four Family	13	23	277	225	-52	-18.8
Five or More Family	1,176	1,735	6,013	8,695	2,682	44.6
CENSUS1 7/20/01						

*Year-to-date totals include data received too late for monthly tabulation. The Census Bureau allocates revisions to prior months and therefore monthly year-to-date totals reflect these changes.

Authorized dwelling units in the Table 1 series and Table 2 do not match those in Tables 4, 5, and 6 due to definitional differences. See "Data Comparability" section on page 1, and Exhibits B and C on pages 3 and 4 for details.

Source: U.S. Census Bureau, Manufacturing and Construction Division
Prepared by: N.J. Department of Labor and Workforce Development, September, 2013

Table 5

Residential Construction Authorized by Building Permits (Census Definitions) New Jersey, 1991 to Present						
Year and Month	Number of Municipalities	Total	Single Family	Two Family	3 or 4 Family	5 or More Family
1991	567	14,856	12,869	402	101	1,484
1992	567	19,072	16,506	510	74	1,982
1993	567	25,188	21,340	758	129	2,961
1994	567	25,388	22,437	722	121	2,108
1995	567	21,521	18,341	670	158	2,352
1996	567	24,173	20,853	880	211	2,229
1997	566	28,018	23,472	916	324	3,306
1998	566	31,345	25,459	1,172	221	4,493
1999	566	31,976	25,129	1,468	290	5,089
2000	566	34,585	25,260	1,844	305	7,176
2001	566	28,267	21,503	1,827	779	4,158
2002	566	30,441	22,379	2,110	742	5,210
2003	566	32,984	22,163	2,870	912	7,039
2004	566	35,936	22,429	3,300	1,476	8,731
2005	566	38,588	22,264	3,212	1,437	11,675
2006	566	34,323	17,113	3,088	1,708	12,414
2007	566	25,389	13,066	1,692	1,311	9,320
2008	566	18,363	9,169	664	411	8,119
2009	566	12,421	7,211	400	206	4,604
2010	566	13,540	7,383	680	276	5,201
2011	566	13,079	6,509	438	178	5,954
2012	566	17,988	7,290	566	365	9,767
2013						
January ‡	565	1,724	642	42	18	1,022
February ‡	565	1,089	502	44	74	469
March ‡	565	1,684	660	64	8	952
April ‡	565	1,807	882	58	15	852
May ‡	565	2,557	955	84	23	1,495
June ‡	565	2,028	939	44	51	994
July ‡	565	2,245	990	66	13	1,176
August	565	2,686	878	50	23	1,735
<u>Year to Date*</u>						
August 2012	---	11,420	4,744	386	277	6,013
August 2013	---	15,820	6,348	452	225	8,695

‡Revised – Monthly data are revised to reflect changes in the year-to-date total.

*Year-to-date totals include data received too late for monthly tabulation. The Census Bureau allocates revisions to prior months and therefore monthly year-to-date totals reflect these changes.

Authorized dwelling units in the Table 1 series and Table 2 do not match those in Tables 4, 5, and 6 due to definitional differences. See "Data Comparability" section on page 1, and Exhibits B and C on pages 3 and 4 for details.

Source: U.S. Census Bureau, Manufacturing and Construction Division

Prepared by: N.J. Department of Labor and Workforce Development, September, 2013

Table 6

Residential Construction Authorized by Building Permits (Census Definitions) New Jersey Counties, 2013						
County	August					Total Year to Date* 2013
	Total	Single Family	Two Family	3 or 4 Family	5 or More Family	
ATLANTIC	47	39	0	8	0	280
BERGEN	271	71	10	3	187	1,731
BURLINGTON	63	39	0	0	24	428
CAMDEN	255	25	0	0	230	713
CAPE MAY	45	41	4	0	0	375
CUMBERLAND	20	15	0	0	5	147
ESSEX	160	35	4	9	112	1,060
GLOUCESTER	321	47	0	3	271	779
HUDSON	539	11	4	0	524	2,333
HUNTERDON	17	7	0	0	10	136
MERCER	50	10	0	0	40	774
MIDDLESEX	136	77	2	0	57	990
MONMOUTH	173	104	0	0	69	1,033
MORRIS	89	53	0	0	36	1,286
OCEAN	219	193	20	0	6	1,134
PASSAIC	78	21	0	0	57	636
SALEM	5	5	0	0	0	28
SOMERSET	86	27	0	0	59	918
SUSSEX	19	19	0	0	0	170
UNION	69	26	6	0	37	668
WARREN	24	13	0	0	11	201
NEW JERSEY	2,686	878	50	23	1,735	15,820

CENSUS3 7/20/01

*Year-to-date totals include data received too late for monthly tabulation. See Table 5 for revised statewide data for prior months.

Authorized dwelling units in the Table 1 series and Table 2 do not match those in Tables 4, 5, and 6 due to definitional differences. See "Data Comparability" section on page 1, and Exhibits B and C on pages 3 and 4 for details.

Source: U.S. Census Bureau, Manufacturing and Construction Division
Prepared by: N.J. Department of Labor and Workforce Development, August, 2013

Table 7a OFFCSPC 10/7/13

Office Square Feet Authorized by Building Permits: New Jersey Counties, August 2013						
County	August			Year-to-Date		
	Total	New Construction	Additions	Total	New Construction	Additions
ATLANTIC	10,350	0	10,350	79,989	69,639	10,350
BERGEN	8,351	8,224	127	294,907	280,878	14,029
BURLINGTON	2,083	2,083	0	315,011	313,811	1,200
CAMDEN	19,604	9,090	10,514	45,652	24,158	21,494
CAPE MAY	99	0	99	22,267	22,108	159
CUMBERLAND	0	0	0	28,871	2,880	25,991
ESSEX	43,674	40,455	3,219	873,759	830,673	43,086
GLOUCESTER	10,886	10,886	0	76,613	64,436	12,177
HUDSON	16,190	15,400	790	27,823	23,963	3,860
HUNTERDON	1,708	1,708	0	57,860	47,748	10,112
MERCER	406	1	405	59,685	41,184	18,501
MIDDLESEX	12,685	9,966	2,719	497,577	387,054	110,523
MONMOUTH	301	0	301	212,836	129,452	83,384
MORRIS	6,117	0	6,117	75,512	30,930	44,582
OCEAN	10,147	4,227	5,920	180,273	119,687	60,586
PASSAIC	3,598	3,598	0	33,642	27,628	6,014
SALEM	0	0	0	14,300	14,300	0
SOMERSET	0	0	0	82,346	81,001	1,345
SUSSEX	1,000	0	1,000	29,782	28,410	1,372
UNION	2,726	0	2,726	207,910	183,345	24,565
WARREN	81	0	81	7,798	6,966	832
STATE BUILDINGS*	107,500	107,500	0	155,135	155,135	0
NEW JERSEY	257,506	213,138	44,368	3,379,548	2,885,386	494,162
NJ August 2012	986,944	926,198	60,746	5,164,501	4,137,443	1,027,058

*State buildings refer to structures owned or constructed by the State or any of its instrumentalities. See Exhibit A, Summary of Building Permit and Certificate Terms, on page 2.

Table 7b OFFCMUN1 10/7/13

Office Square Feet Authorized by Building Permits: New Jersey Top Municipalities, August 2013					
Rank	Municipality	County	Total	New Construction	Additions
1	Cedar Grove Township	Essex	40,455	40,455	0
2	Bayonne City	Hudson	15,400	15,400	0
3	Egg Harbor Township	Atlantic	10,350	0	10,350
4	Deptford Township	Gloucester	9,586	9,586	0
5	Ramsey Borough	Bergen	8,224	8,224	0
6	Magnolia Borough	Camden	7,381	0	7,381
7	Monroe Township	Middlesex	6,966	6,966	0
8	Lakewood Township	Ocean	5,920	0	5,920
9	Runnemede Borough	Camden	4,798	4,798	0
10	Mount Ephraim Borough	Camden	4,292	4,292	0
11	Little Egg Harbor Township	Ocean	4,225	4,225	0
12	Pequannock Township	Morris	3,384	0	3,384
13	Newark City	Essex	3,219	0	3,219
14	Cherry Hill Township	Camden	3,133	0	3,133
15	South Plainfield Borough	Middlesex	3,000	3,000	0
16	Kenilworth Borough	Union	2,726	0	2,726
17	South Brunswick Township	Middlesex	2,719	0	2,719
18	Mount Laurel Township	Burlington	2,083	2,083	0
19	Wayne Township	Passaic	2,062	2,062	0
20	Clinton Township	Hunterdon	1,708	1,708	0
TOP MUNICIPALITIES			141,631	102,799	38,832
NEW JERSEY			257,506	213,138	44,368
TOP AS % OF STATE			55.0%	48.2%	87.5%
State Buildings			107,500	107,500	0

Table 7c OFFCMUN2 10/7/13

Office Square Feet Authorized by Building Permits: New Jersey Top Municipalities, January-August 2013					
Rank	Municipality	County	Total	New Construction	Additions
1	Newark City	Essex	748,109	742,830	5,279
2	Florence Township	Burlington	218,425	218,425	0
3	Piscataway Township	Middlesex	210,469	129,815	80,654
4	Clark Township	Union	157,040	157,040	0
5	Maywood Borough	Bergen	111,963	111,834	129
6	Howell Township	Monmouth	74,459	67,004	7,455
7	Bordentown Township	Burlington	73,303	73,303	0
8	Franklin Township	Somerset	70,100	70,100	0
9	Livingston Township	Essex	68,064	34,103	33,961
10	Toms River Township	Ocean	67,368	24,811	42,557
11	Marlboro Township	Monmouth	57,179	3,263	53,916
12	Monroe Township	Middlesex	56,966	56,966	0
13	River Edge Borough	Bergen	52,351	52,351	0
14	Woodbridge Township	Middlesex	51,493	51,493	0
15	Mahwah Township	Bergen	50,500	50,500	0
16	South Brunswick Township	Middlesex	46,007	26,858	19,149
17	Hamilton Township	Atlantic	42,475	42,475	0
18	Raritan Township	Hunterdon	41,180	41,180	0
19	Cedar Grove Township	Essex	40,455	40,455	0
20	Hamilton Township	Mercer	39,493	37,819	1,674
TOP MUNICIPALITIES			2,277,399	2,032,625	244,774
NEW JERSEY			3,379,548	2,885,386	494,162
TOP AS % OF STATE			67.4%	70.4%	49.5%
State Buildings			155,135	155,135	0

Office Square Feet Authorized by Building Permits January-August 2013

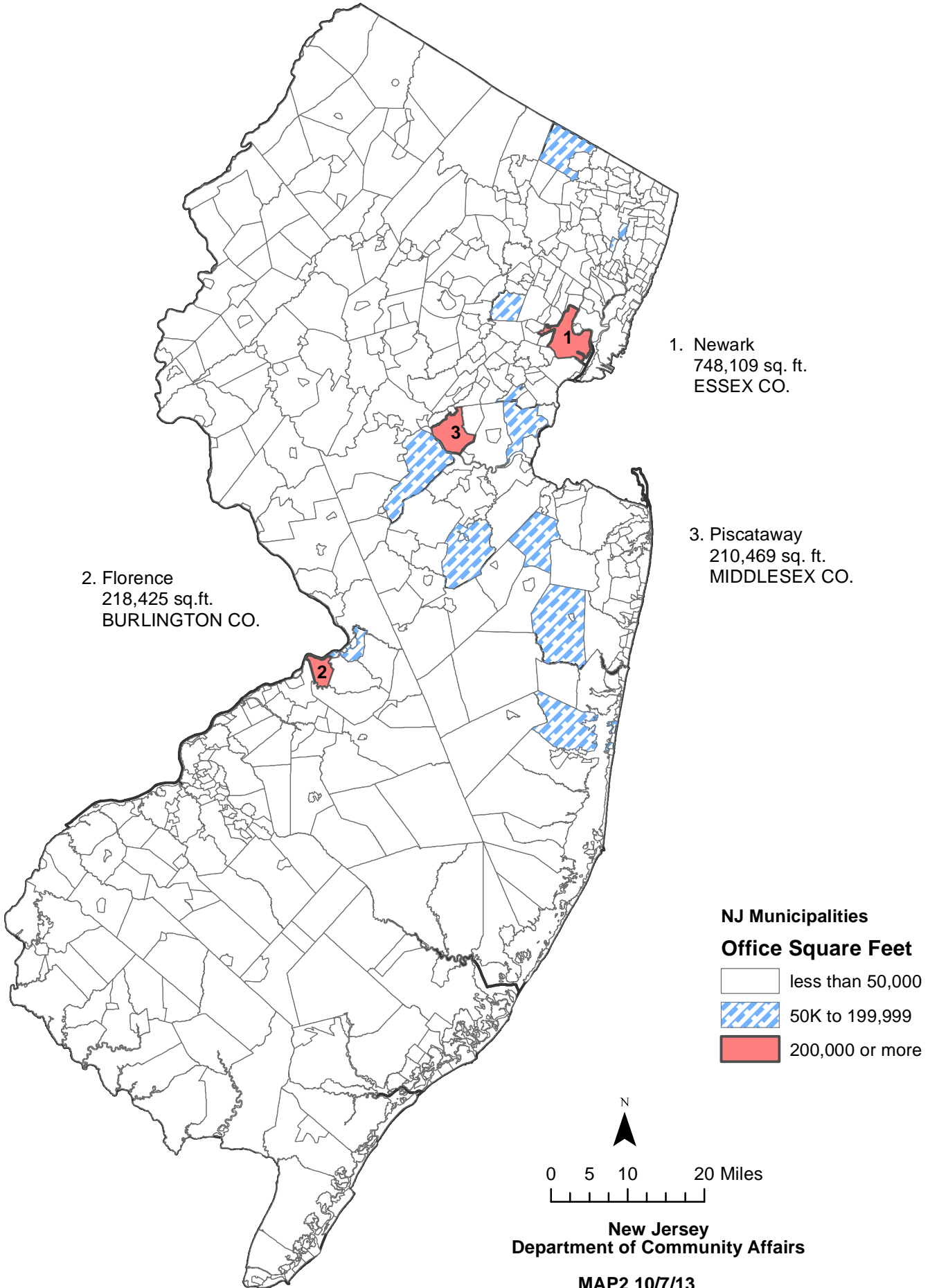


Table 8 CERTOFF 10/7/13

Office Square Feet Certified: New Jersey Counties, August 2013						
County	August			Year-to-Date		
	Total	New Construction	Additions	Total	New Construction	Additions
ATLANTIC	2,453	2,453	0	36,393	20,612	15,781
BERGEN	3,032	0	3,032	165,655	140,619	25,036
BURLINGTON	3,103	3,103		55,150	52,427	2,723
CAMDEN	0	0	0	433,210	433,210	0
CAPE MAY	0	0	0	48,327	40,565	7,762
CUMBERLAND	3,295	3,295	0	6,375	6,175	200
ESSEX	616	616	0	75,175	66,447	8,728
GLOUCESTER	10,043	9,966	77	26,703	17,556	9,147
HUDSON	0	0	0	60,902	48,497	12,405
HUNTERDON	0	0	0	47,626	43,744	3,882
MERCER	3,728	3,728	0	305,606	288,806	16,800
MIDDLESEX	70,088	70,088	0	1,209,536	1,069,151	140,385
MONMOUTH	34,319	34,319	0	223,341	207,642	15,699
MORRIS	30,632	2,400	28,232	205,963	157,934	48,029
OCEAN	14,158	8,760	5,398	49,271	43,872	5,399
PASSAIC	71,480	68,730	2,750	317,627	309,679	7,948
SALEM	0	0	0	720		720
SOMERSET	0	0	0	17,337	17,257	80
SUSSEX	0	0	0	0	0	0
UNION	1,200	1,200	0	191,912	34,420	157,492
WARREN	0	0	0	3,191	3,191	0
STATE BUILDINGS*	696	696	0	67,782	67,782	0
NEW JERSEY	248,843	209,354	39,489	3,547,802	3,069,586	478,216
NJ August 2012	209,080	159,281	49,799	2,199,632	1,736,009	463,623

*State buildings refer to structures owned or constructed by the State or any of its instrumentalities. See Exhibit A, Summary of Building Permit and Certificate Terms, on page 2.

Table 9a RETSPACE 10/7/13

Retail Square Feet Authorized by Building Permits: New Jersey Counties, August 2013						
County	August			Year-to-Date		
	Total	New Construction	Additions	Total	New Construction	Additions
ATLANTIC	0	0	0	718	0	718
BERGEN	2,263	2,263	0	65,043	55,167	9,876
BURLINGTON	17,250	0	17,250	45,869	23,845	22,024
CAMDEN	0	0	0	21,508	21,508	0
CAPE MAY	0	0	0	0	0	0
CUMBERLAND	0	0	0	0	0	0
ESSEX	3,330	3,330	0	140,038	23,325	116,713
GLOUCESTER	108,938	108,938	0	117,699	113,087	4,612
HUDSON	0	0	0	0	0	0
HUNTERDON	0	0	0	55,587	55,587	0
MERCER	0	0	0	14,800	14,800	0
MIDDLESEX	7,323	5,535	1,788	245,527	243,739	1,788
MONMOUTH	0	0	0	64,834	63,064	1,770
MORRIS	0	0	0	109,758	108,860	898
OCEAN	4,000	4,000	0	36,581	35,295	1,286
PASSAIC	19,656	0	19,656	28,344	6,598	21,746
SALEM	0	0	0	3,034	0	3,034
SOMERSET	0	0	0	208,772	160,708	48,064
SUSSEX	0	0	0	0	0	0
UNION	0	0	0	17,245	7,538	9,707
WARREN	0	0	0	1,922	2	1,920
STATE BUILDINGS*	0	0	0	0	0	0
NEW JERSEY	162,760	124,066	38,694	1,177,279	933,123	244,156
NJ August 2012	580,779	566,902	13,877	1,602,605	938,504	664,101

*State buildings refer to structures owned or constructed by the State or any of its instrumentalities. See Exhibit A, Summary of Building Permit and Certificate Terms, on page 2.

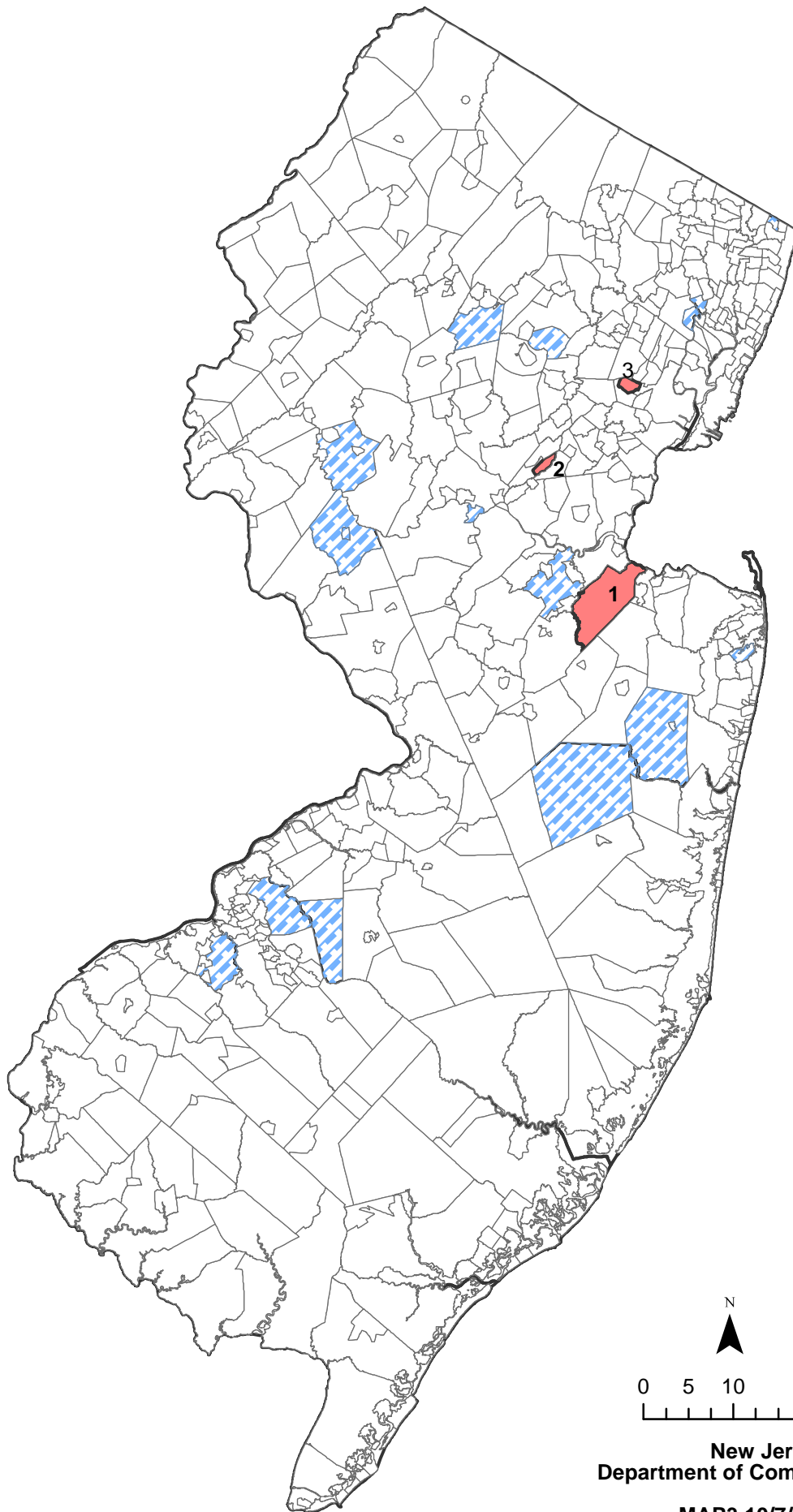
Table 9b RETMUN1 10/7/13

Retail Square Feet Authorized by Building Permits: New Jersey Top Municipalities, July 2013					
Rank	Municipality	County	Total	New Construction	Additions
1	Deptford Township	Gloucester	99,827	99,827	0
2	Passaic City	Passaic	19,656	0	19,656
3	Evesham Township	Burlington	17,250	0	17,250
4	Greenwich Township	Gloucester	9,111	9,111	0
5	Monroe Township	Middlesex	5,535	5,535	0
6	Jackson Township	Ocean	4,000	4,000	0
7	West Orange Township	Essex	3,330	3,330	0
8	Northvale Borough	Bergen	2,263	2,263	0
9	Woodbridge Township	Middlesex	1,788	0	1,788
10					
11					
12					
13					
14					
15					
16					
17					
18					
19					
20					
	TOP MUNICIPALITIES		162,760	124,066	38,694
	NEW JERSEY		162,760	124,066	38,694
	TOP AS % OF STATE		100.0%	100.0%	100.0%

Table 9c RETMUN2 10/7/13

Retail Square Feet Authorized by Building Permits: New Jersey Top Municipalities, January-August 2013					
Rank	Municipality	County	Total	New Construction	Additions
1	Old Bridge Township	Middlesex	178,910	178,910	0
2	North Plainfield Borough	Somerset	156,166	156,166	0
3	South Orange Village	Essex	116,713	0	116,713
4	Deptford Township	Gloucester	99,827	99,827	0
5	Hanover Township	Morris	77,052	77,052	0
6	East Brunswick Township	Middlesex	59,294	59,294	0
7	Evesham Township	Burlington	45,869	23,845	22,024
8	Manville Borough	Somerset	43,479	0	43,479
9	Oceanport Borough	Monmouth	41,737	41,737	0
10	Garfield City	Bergen	27,720	27,720	0
11	Northvale Borough	Bergen	26,809	26,809	0
12	Flemington Borough	Hunterdon	21,600	21,600	0
13	Howell Township	Monmouth	19,960	19,960	0
14	Passaic City	Passaic	19,656	0	19,656
15	Cherry Hill Township	Camden	18,568	18,568	0
16	Randolph Township	Morris	17,398	17,398	0
17	Raritan Township	Hunterdon	17,325	17,325	0
18	Jackson Township	Ocean	16,931	16,931	0
19	Clinton Township	Hunterdon	16,662	16,662	0
20	Robbinsville Township	Mercer	14,800	14,800	0
TOP MUNICIPALITIES			1,036,476	834,604	201,872
NEW JERSEY			1,177,279	933,123	244,156
TOP AS % OF STATE			88.0%	89.4%	82.7%




Retail Square Feet Authorized by Building Permits January-August 2013

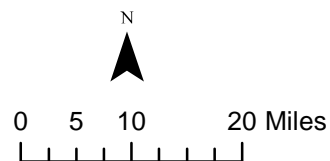


1. Old Bridge
178,910 sq ft
MIDDLESEX CO.
2. North Plainfield Boro
156,166 sq ft
SOMERSET CO.
3. South Orange
116,713
ESSEX CO.

NJ Municipalities

Retail Square Feet

-  less than 15,000
-  15K to 99,999
-  over 100K



New Jersey
Department of Community Affairs

MAP3 10/7/13

Table 10 CERTRET 10/7/13

Retail Square Feet Certified: New Jersey Counties, July 2013						
County	August			Year-to-Date		
	Total	New Construction	Additions	Total	New Construction	Additions
ATLANTIC	0	0	0	56,514	30,514	26,000
BERGEN	18,981	16,915	2,066	68,112	61,117	6,995
BURLINGTON	0	0	0	19,629	19,629	0
CAMDEN	0	0	0	16,000	6,000	10,000
CAPE MAY	0	0	0	5,025	5,025	0
CUMBERLAND	0	0	0	19,562	16,765	2,797
ESSEX	0	0	0	2,244	2,244	0
GLOUCESTER	0	0	0	17,842	17,842	0
HUDSON	0	0	0	17,467	17,467	0
HUNTERDON	21,600	21,600	0	21,600	21,600	0
MERCER	0	0	0	200		200
MIDDLESEX	0	0	0	7,192	6,552	640
MONMOUTH	0	0	0	3,235	1,210	2,025
MORRIS	0	0	0	4,230	4,230	0
OCEAN	3,435	3,435	0	12,655	12,655	0
PASSAIC	0	0	0	0	0	0
SALEM	0	0	0	24,200	24,200	0
SOMERSET	0	0	0	16,240	0	16,240
SUSSEX	14,045	14,045	0	53,511	53,511	0
UNION	13,839	13,839	0	19,422	19,422	0
WARREN	3,200	3,200	0	3,200	3,200	0
STATE BUILDINGS*	0	0	0	0	0	0
NEW JERSEY	75,100	73,034	2,066	388,080	323,183	64,897
NJ August 2012	47,183	0	47,183	791,040	766,348	24,692

*State buildings refer to structures owned or constructed by the State or any of its instrumentalities. See Exhibit A, Summary of Building Permit and Certificate Terms, on page 2.

Table 11a WORK 10/7/13

Dollar Amount of Construction Authorized by Building Permits: New Jersey Counties, August 2013						
County	August			Year-to-Date		
	Total	Residential	Nonresidential	Total	Residential	Nonresidential
ATLANTIC	\$29,669,619	\$14,600,662	\$15,068,957	\$231,450,843	\$120,331,038	\$111,119,805
BERGEN	112,232,280	59,751,269	52,481,011	996,479,701	508,400,528	488,079,173
BURLINGTON	31,170,511	16,937,406	14,233,105	269,073,972	129,027,508	140,046,464
CAMDEN	41,479,717	16,174,529	25,305,188	267,255,232	106,120,375	161,134,857
CAPE MAY	23,706,865	18,334,193	5,372,672	189,605,654	153,312,825	36,292,829
CUMBERLAND	5,214,227	2,585,410	2,628,817	65,383,207	20,437,944	44,945,263
ESSEX	217,237,983	32,876,755	184,361,228	815,645,261	294,922,577	520,722,684
GLOUCESTER	41,721,895	23,738,070	17,983,825	192,438,771	117,042,976	75,395,795
HUDSON	142,317,137	109,379,750	32,937,387	908,885,921	551,636,631	357,249,290
HUNTERDON	9,102,814	6,057,885	3,044,929	102,645,313	53,061,984	49,583,329
MERCER	58,590,058	21,367,958	37,222,100	602,756,961	208,857,438	393,899,523
MIDDLESEX	91,454,617	36,663,699	54,790,918	719,381,078	267,861,660	451,519,418
MONMOUTH	76,186,296	53,793,546	22,392,750	737,317,513	501,259,991	236,057,522
MORRIS	48,612,765	29,473,350	19,139,415	492,163,834	286,972,904	205,190,930
OCEAN	89,950,607	76,574,439	13,376,168	622,515,111	484,451,113	138,063,998
PASSAIC	30,345,922	12,682,160	17,663,762	238,743,756	122,760,797	115,982,959
SALEM	15,280,908	1,334,767	13,946,141	36,930,529	11,477,347	25,453,182
SOMERSET	42,001,389	25,229,171	16,772,218	465,029,213	227,079,670	237,949,543
SUSSEX	15,522,032	6,863,851	8,658,181	94,400,494	45,144,101	49,256,393
UNION	65,449,109	28,589,902	36,859,207	375,461,015	213,188,821	162,272,194
WARREN	4,668,634	2,844,913	1,823,721	50,285,903	30,821,700	19,464,203
STATE BUILDINGS*	52,058,116	0	52,058,116	313,794,646	4,168,811	309,625,835
NEW JERSEY	\$1,243,973,501	\$595,853,685	\$648,119,816	\$8,787,643,928	\$4,458,338,739	\$4,329,305,189
NJ August 2012	\$865,438,345	\$439,161,681	\$426,276,664	\$7,463,637,436	\$3,545,012,379	\$3,918,625,057

*State buildings refer to structures owned or constructed by the State or any of its instrumentalities. See Exhibit A, Summary of Building Permit and Certificate Terms, on page 2.

Table 11c WORK1 10/7/13

Dollar Amount Construction Authorized by Building Permits: Top Municipalities, August 2013					
Rank	Municipality	County	Total	Residential	Nonresidential
1	Newark City	Essex	\$178,966,196	\$2,783,511	\$176,182,685
2	Hoboken City	Hudson	73,939,720	73,260,619	679,101
3	Paramus Borough	Bergen	29,531,836	2,693,088	26,838,748
4	Jersey City	Hudson	26,220,684	7,968,539	18,252,145
5	Princeton (1114)	Mercer	18,585,738	8,274,481	10,311,257
6	Bayonne City	Hudson	17,457,909	13,326,011	4,131,898
7	Toms River Township	Ocean	16,116,527	13,629,545	2,486,982
8	Lakewood Township	Ocean	15,986,200	12,016,904	3,969,296
9	Garwood Borough	Union	15,968,230	225,730	15,742,500
10	Deptford Township	Gloucester	14,408,896	874,829	13,534,067
11	South Brunswick Township	Middlesex	14,095,844	2,975,137	11,120,707
12	Harrison Town	Hudson	13,789,574	12,267,150	1,522,424
13	Carneys Point Township	Salem	13,750,263	331,792	13,418,471
14	Piscataway Township	Middlesex	12,692,440	1,514,401	11,178,039
15	Marlboro Township	Monmouth	12,437,344	7,314,775	5,122,569
16	Monroe Township	Middlesex	12,123,832	6,054,410	6,069,422
17	Monroe Township	Gloucester	12,101,714	11,741,386	360,328
18	Cherry Hill Township	Camden	11,689,281	4,944,047	6,745,234
19	Linden City	Union	11,618,145	1,205,586	10,412,559
20	Summit City	Union	10,763,738	7,796,088	2,967,650
TOP MUNICIPALITIES			521,480,373	191,198,029	341,046,082
NEW JERSEY			\$1,243,973,501	\$595,853,685	\$648,119,816
TOP AS % OF STATE			41.9%	32.1%	52.6%

Table 11c WORK2 10/7/13

Dollar Amount Construction Authorized by Building Permits: Top Municipalities, January-August 2013					
Rank	Municipality	County	Total	Residential	Nonresidential
1	Newark City	Essex	\$434,307,342	\$45,480,657	\$388,826,685
2	Jersey City	Hudson	413,488,889	219,601,864	193,887,025
3	Princeton (1114)	Mercer	169,662,341	99,153,529	70,508,812
4	Robbinsville Township	Mercer	139,368,686	8,983,048	130,385,638
5	Weehawken Township	Hudson	134,766,784	130,283,176	4,483,608
6	Piscataway Township	Middlesex	120,393,782	18,726,084	101,667,698
7	Paramus Borough	Bergen	119,475,726	18,307,272	101,168,454
8	Hoboken City	Hudson	117,876,099	101,259,881	16,616,218
9	Woodbridge Township	Middlesex	99,075,735	24,806,384	74,269,351
10	Lawrence Township	Mercer	96,346,213	8,687,509	87,658,704
11	Franklin Township	Somerset	95,151,999	42,333,594	52,818,405
12	Toms River Township	Ocean	89,456,433	61,955,005	27,501,428
13	Secaucus Town	Hudson	82,787,545	8,395,321	74,392,224
14	Monroe Township	Middlesex	82,221,333	59,143,108	23,078,225
15	Teaneck Township	Bergen	81,140,805	20,297,410	60,843,395
16	Lakewood Township	Ocean	78,754,379	48,566,794	30,187,585
17	South Brunswick	Middlesex	63,680,699	24,193,577	39,487,122
18	Atlantic City	Atlantic	63,448,379	10,955,393	52,492,986
19	Branchburg Township	Somerset	59,477,004	6,038,022	53,438,982
20	Parsippany-Troy Hills	Morris	59,476,366	20,006,459	39,469,907
TOP MUNICIPALITIES			2,600,356,539	977,174,087	1,623,182,452
NEW JERSEY			\$8,787,643,928	\$4,458,338,739	\$4,329,305,189
TOP AS % OF STATE			29.6%	21.9%	37.5%

Estimated Dollar Amount of Construction Authorized by Building Permits, January to August 2013

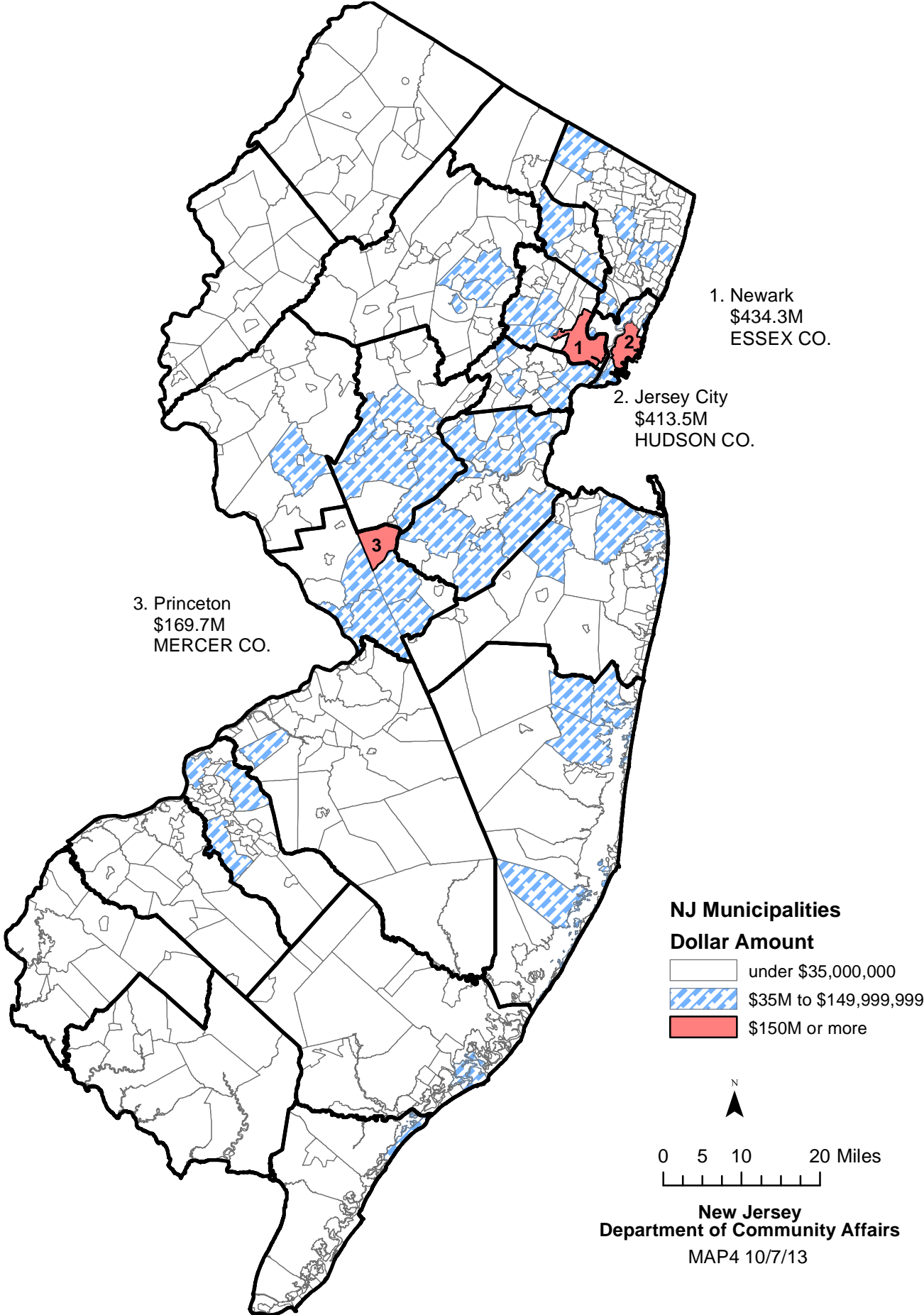


Table 12 USEGROUP 10/7/13

Dollar Amount of Construction Authorized by Building Permits by Use Group: New Jersey, August 2013						
Use Group	August			Year-to-Date		
	Permits	Construction Costs	Square Feet	Permits	Construction Costs	Square Feet
RESIDENTIAL	33,392	\$595,853,685	5,011,533	260,244	\$4,458,338,739	34,678,506
1 & 2 Family	31,470	430,068,786	3,068,757	243,933	3,337,360,129	24,247,727
Multifamily	1,922	165,784,899	1,942,776	16,311	1,120,978,610	10,430,779
NONRESIDENTIAL	6,794	\$648,119,816	2,225,462	55,393	4,329,305,189	16,306,902
Hotels, Motels, Guest Houses	77	2,291,140	3,139	764	71,238,201	274,726
Assembly	494	68,422,794	431,315	4,122	438,846,114	1,725,310
Business	2,338	330,979,710	257,506	18,692	1,805,771,116	3,379,548
Educational	390	50,475,017	21,839	2,191	444,086,279	694,985
Hazardous Use	9	10,344,422	21,938	74	38,195,621	110,641
Industrial	59	18,055,601	59,150	474	106,002,674	285,122
Institutional	82	25,614,077	134,237	810	158,572,179	549,428
Retail	398	49,097,085	162,760	3,206	295,887,290	1,177,279
Storage	196	32,561,356	891,217	1,513	429,115,617	6,161,028
Signs, Fences, Miscellaneous	2,751	60,278,614	242,361	23,547	541,590,098	1,948,835
NEW JERSEY	40,186	\$1,243,973,501	7,236,995	315,637	\$8,787,643,928	50,985,408
NJ August 2012	37,174	\$865,438,345	5,580,898	271,999	\$7,463,637,436	41,724,766

Table 13 PARTIC 10/7/13

Dollar Amount of Construction Authorized by Building Permits: New Jersey, August 2013					
Month	Number of Municipalities Reporting	Total	New Construction	Additions	Alterations
JANUARY	565	\$1,042,341,857	\$440,469,246	\$88,256,697	\$513,615,914
FEBRUARY	561	947,620,891	345,695,982	91,884,388	510,040,521
MARCH	561	883,453,545	284,195,667	62,572,392	536,685,486
APRIL	561	1,138,601,837	416,523,076	91,195,236	630,883,525
MAY	562	1,307,693,502	549,592,179	135,198,204	622,903,119
JUNE	558	1,173,935,925	443,352,031	106,289,957	624,293,937
JULY	546	1,050,022,870	334,355,216	99,915,792	615,751,862
AUGUST	548	1,243,973,501	609,107,746	80,247,446	554,618,309
SEPTEMBER					
OCTOBER					
NOVEMBER					
DECEMBER					
TOTAL		\$8,787,643,928	\$3,423,291,143	\$755,560,112	\$4,608,792,673
		\$7,463,637,436	\$2,343,973,081	\$764,034,961	\$4,355,629,394
NJ August 2012					

NOTE:

Users of the monthly *CONSTRUCTION REPORTER* may notice that year-to-date figures in a particular issue may not be obtained by merely summing the monthly totals that appear in previous issues. This is because the construction data compiled by the New Jersey Department of Community Affairs are continuously updated. Monthly construction reports submitted too late to make the January issue of the *CONSTRUCTION REPORTER*, for example, are included in the year-to-date totals that appear in the February issue.

MUNICIPAL SUMMARY DATA, August 2013

AREA NAME	AUTHORIZED HOUSING UNITS	AUTHORIZED HOUSING UNITS (CENSUS DEFINITIONS)	HOUSING UNITS CERTIFIED	OFFICE SPACE AUTHORIZED BY BUILDING PERMITS	RETAIL SPACE AUTHORIZED BY BUILDING PERMITS	RESI-DENTIAL (\$ AMOUNT)	NONRESI-DENTIAL (\$ AMOUNT)
	UNITS	UNITS	UNITS	PERMITS	PERMITS		
Atlantic County	48	47	34	10,350	0	14,600,662	15,068,957
Bergen County	86	271	77	8,351	2,263	59,751,269	52,481,011
Burlington County	38	63	24	2,083	17,250	16,937,406	14,233,105
Camden County	102	255	99	19,604	0	16,174,529	25,305,188
Cape May County	44	45	54	99	0	18,334,193	5,372,672
Cumberland County	9	20	16	0	0	2,585,410	2,628,817
Essex County	27	160	39	43,674	3,330	32,876,755	184,361,228
Gloucester County	99	321	45	10,886	108,938	23,738,070	17,983,825
Hudson County	318	539	495	16,190	0	109,379,750	32,937,387
Hunterdon County	3	17	11	1,708	0	6,057,885	3,044,929
Mercer County	25	49	27	406	0	21,367,958	37,222,100
Middlesex County	170	136	74	12,685	7,323	36,663,699	54,790,918
Monmouth County	121	173	123	301	0	53,793,546	22,392,750
Morris County	37	89	41	6,117	0	29,473,350	19,139,415
Ocean County	326	219	119	10,147	4,000	76,574,439	13,376,168
Passaic County	29	78	20	3,598	19,656	12,682,160	17,663,762
Salem County	4	5	3	0	0	1,334,767	13,946,141
Somerset County	82	86	23	0	0	25,229,171	16,772,218
Sussex County	11	19	17	1,000	0	6,863,851	8,658,181
Union County	236	69	24	2,726	0	28,589,902	36,859,207
Warren County	1	24	11	81	0	2,844,913	1,823,721
State Buildings	0		0	107,500	0	0	52,058,116
New Jersey	1,816	2,685	1,376	257,506	162,760	595,853,685	648,119,816
NEW JERSEY 2012	15,270	17,939	11,118	7,395,704	2,088,658	\$5,349,696,724	\$5,592,013,272
NEW JERSEY 2011	11,882	12,952	10,352	4,915,544	1,680,445	4,832,350,928	6,107,458,821
NEW JERSEY 2010	11,885	13,535	11,625	5,496,579	2,192,231	4,879,205,601	4,889,436,742
NEW JERSEY 2009	11,145	10,827	14,460	4,253,888	2,248,935	4,506,768,272	5,010,957,124
NEW JERSEY 2008	16,338	18,369	18,699	7,962,998	5,557,101	5,915,342,801	8,029,191,777
NEW JERSEY 2007	25,948	25,389	23,138	9,569,501	5,423,889	8,047,734,107	7,308,838,713
NEW JERSEY 2006	32,050	34,323	28,564	11,113,555	5,186,662	8,320,885,749	7,354,222,206
NEW JERSEY 2005	39,688	38,375	31,047	11,038,132	5,965,258	9,127,194,950	6,270,312,197
NEW JERSEY 2004	39,254	35,936	27,950	12,219,068	4,961,257	7,972,659,530	6,301,672,320
NEW JERSEY 2003	35,171	32,984	26,932	9,744,146	6,038,428	6,674,318,674	5,474,429,133
NEW JERSEY 2002	34,589	30,411	29,174	9,261,054	7,560,913	6,210,486,721	5,869,455,378
NEW JERSEY 2001	35,680	28,267	30,054	19,134,533	7,244,833	5,756,546,492	6,250,910,138
NEW JERSEY 2000	38,065	34,585	29,705	15,531,039	6,063,412	5,575,603,576	5,812,079,758
NEW JERSEY 1999	37,536	31,976	28,109	13,237,891	6,226,471	5,377,163,097	5,207,004,433
NEW JERSEY 1998	35,676	31,345	28,008	12,703,824	7,921,892	4,812,845,052	4,583,910,465
NEW JERSEY 1997	30,017	28,018	34,670	10,490,171	5,688,955	4,083,041,927	4,263,491,187
Atlantic County							
Absecon City	0	0	0	0	0	95,307	1,180,200
Atlantic City	1	3 *	1	0	0	925,984	5,835,836
Brigantine City	4	4	2	0	0	2,271,751	67,400
Buena Borough	2	0	2	0	0	189,455	5,075
Buena Vista Township	2	2	1	0	0	247,772	60,508
Corbin City	0	1 *	0	0	0	0	0
Egg Harbor City	1	1	2	0	0	180,291	17,551
Egg Harbor Township	11	9	6	10,350	0	1,550,360	926,496
Estell Manor City	0	0	0	0	0	21,870	22,110
Folsom Borough	0	0	0	0	0	15,238	202,700
Galloway Township	3	3	2	0	0	1,105,674	1,316,895
Hamilton Township	3	0	5	0	0	723,253	1,603,737
Hammonton Township	0	0	0	0	0	198,090	774,249

MUNICIPAL SUMMARY DATA, August 2013

AREA NAME	AUTHORIZED	AUTHORIZED	HOUSING	OFFICE SPACE	RETAIL SPACE	RESI-	NONRESI-
	HOUSING	HOUSING UNITS	UNITS	AUTHORIZED	AUTHORIZED	DENTIAL	DENTIAL
	UNITS	(CENSUS	CERTIFIED	BY BUILDING	BY BUILDING	(\$ AMOUNT)	(\$ AMOUNT)
		DEFINITIONS)		PERMITS	PERMITS		
Linwood City	0	1 *	1	0	0	426,579	38,400
Longport City	1	2	2	0	0	555,014	0
Margate City	16	15	7	0	0	2,993,155	163,103
Mullica City	0	2 *	1	0	0	100,852	101,000
Northfield City	0	1 *	0	0	0	189,803	74,440
Pleasantville City	2	2	2	0	0	377,165	712,254
Port Republic City	0	0	0	0	0	22,230	0
Somers Point City	2	1 *	0	0	0	1,793,722	1,882,202
Ventnor City	0	0 *	0	0	0	562,759	0
Weymouth Township	0	0	0	0	0	54,338	84,801
Bergen County							
Allendale Borough	0	9	3	0	0	3,083,160	211,200
Alpine Borough	0	1 *	0	0	0	258,223	37,950
Bergenfield Borough	3	3	0	0	0	1,215,491	160,133
Bogota Borough	0	0 *	0	0	0	175,273	14,450
Carlstadt Borough	0	3 *	0	0	0	90,329	193,900
Cliffside Park Borough	1	1	3	0	0	1,956,124	716,260
Closter Borough	0	0	0	0	0	267,979	25,002
Cresskill Borough	1	7 *	0	0	0	666,772	293,643
Demarest Borough	0	2	1	0	0	610,877	14,900
Dumont Borough	0	0 *	0	0	0	604,799	0
Elmwood Park Borough	56	5 *	0	0	0	5,826,088	445,600
East Rutherford Borough	0	55 *	0	0	0	135,593	130,780
Edgewater Borough	2	2	7	0	0	748,727	122,510
Emerson Borough	0	9 *	0	0	0	399,318	75,219
Englewood City	1	1	0	0	0	1,663,101	902,956
Englewood Cliffs Borough	3	3	1	0	0	3,164,026	154,400
Fair Lawn Borough	0	0 *	0	0	0	770,503	868,347
Fairview Borough	0	14 *	34	0	0	122,204	132,206
Fort Lee Borough	2	2	1	0	0	3,309,322	889,398
Franklin Lakes Borough	1	1	0	0	0	1,309,780	201,751
Garfield City	0	0	2	0	0	380,713	500,852
Glen Rock Borough	No report	3 *	No report	No report	No report	No report	No report
Hackensack City	0	1 *	2	0	0	609,944	2,311,940
Harrington Park Borough	0	1 *	1	0	0	122,543	1,000
Hasbrouck Heights Borough	0	0	0	0	0	274,412	62,445
Haworth Borough	0	0	0	0	0	197,945	33,700
Hillsdale Borough	0	0 *	0	0	0	775,723	307,967
Ho-Ho-Kus Borough	1	1 *	0	0	0	171,090	63,559
Leonia Borough	0	0 *	0	0	0	497,583	173,904
Little Ferry Borough	0	0	0	0	0	216,113	82,640
Lodi Borough	0	0	0	0	0	391,510	222,677
Lyndhurst Township	0	61 *	0	0	0	667,016	409,583
Mahwah Township	0	0	0	0	0	1,445,883	1,700,035
Maywood Borough	0	0	0	127	0	241,197	135,168
Midland Park Borough	0	0	0	0	0	404,280	1,596,002
Montvale Borough	1	1	1	0	0	995,360	316,925
Moonachie Borough	0	0	1	0	0	102,875	2,000
New Milford Borough	1	1 *	0	0	0	832,084	26,600
North Arlington Borough	0	0	0	0	0	389,622	375,440
Northvale Borough	0	7 *	0	0	2,263	160,030	725,422
Norwood Borough	0	1 *	0	0	0	468,481	600
Oakland Borough	0	0	0	0	0	480,438	336,300
Old Tappan Borough	0	1 *	0	0	0	334,010	153,228
Oradell Borough	0	2 *	0	0	0	414,317	51,879

MUNICIPAL SUMMARY DATA, August 2013

AREA NAME	AUTHORIZED	AUTHORIZED	HOUSING	OFFICE SPACE	RETAIL SPACE	RESI-	NONRESI-
	HOUSING	HOUSING UNITS	UNITS	AUTHORIZED	AUTHORIZED	DENTIAL	DENTIAL
	UNITS	(CENSUS	CERTIFIED	BY BUILDING	BY BUILDING	(\$ AMOUNT)	(\$ AMOUNT)
		DEFINITIONS)		PERMITS	PERMITS		
Palisades Park Borough	6	6	6	0	0	1,621,052	152,900
Paramus Borough	2	2	1	0	0	2,693,088	26,838,748
Park Ridge Borough	0	8 *	1	0	0	214,453	117,237
Ramsey Borough	0	2 *	1	8,224	0	772,359	2,734,104
Ridgefield Borough	0	3 *	0	0	0	128,081	137,150
Ridgefield Park Village	0	1 *	0	0	0	242,754	1,433,045
Ridgewood Village	0	2 *	1	0	0	2,053,304	260,697
River Edge Borough	0	1 *	0	0	0	830,933	315,100
River Vale Township	0	0	0	0	0	999,161	41,855
Rochelle Park Township	1	1	0	0	0	196,580	15,430
Rockleigh Borough	0	0	0	0	0	18,700	165,800
Rutherford Borough	0	1 *	0	0	0	683,673	898,067
Saddle Brook Township	0	10 *	0	0	0	701,494	801,533
Saddle River Borough	0	0	0	0	0	436,550	635,243
South Hackensack Twp	0	0	0	0	0	9,986	70,950
Teaneck Township	1	0	0	0	0	2,197,505	888,938
Tenafly Borough	1	0	4	0	0	2,499,924	383,934
Teterboro Borough	0	0	0	0	0	0	316,850
Upper Saddle River Borough	2	1	1	0	0	1,257,788	46,400
Waldwick Borough	0	1 *	1	0	0	354,022	111,060
Wallington Borough	0	4 *	3	0	0	43,277	35,950
Washington Township	0	1 *	0	0	0	1,058,570	267,414
Westwood Borough	0	0	0	0	0	349,298	235,171
Woodcliff Lake Borough	0	3 *	1	0	0	1,276,233	33,100
Wood-Ridge Borough	0	25 *	0	0	0	341,956	36,875
Wyckoff Township	0	1 *	0	0	0	1,819,670	326,989
Burlington County							
Bass River Township	0	0 *	0	0	0	32,760	51,800
Beverly City	0	0 *	0	0	0	28,945	2,150
Bordentown City	1	1	0	0	0	212,741	175
Bordentown Township	0	1 *	1	0	0	319,803	224,840
Burlington City	0	0	0	0	0	52,648	72,100
Burlington Township	12	7 *	0	0	0	1,552,542	304,025
Chesterfield Township	1	1	1	0	0	405,733	44,649
Cinnaminson Township	0	22 *	1	0	0	344,690	713,113
Delanco Township	0	8 *	0	0	0	70,665	7,050
Delran Township	0	1 *	2	0	0	1,020,893	1,109,248
Eastampton Township	0	0	1	0	0	70,412	5,200
Edgewater Park Township	0	0 *	0	0	0	117,641	4,301
Evesham Township	3	0	3	0	17,250	836,918	2,785,529
Fieldsboro Borough	0	0	0	0	0	1,299	0
Florence Township	2	2	0	0	0	599,691	314,775
Hainesport Township	0	0	0	0	0	165,012	52,574
Lumberton Township	0	0	0	0	0	207,089	531,820
Mansfield Township	1	2 *	0	0	0	165,650	75,000
Maple Shade Borough	1	1	0	0	0	304,827	2,814,519
Medford Township	5	5	5	0	0	2,035,437	299,832
Medford Lakes Borough	1	1	0	0	0	159,293	0
Moorestown Township	3	3	3	0	0	2,097,295	1,911,017
Mount Holly Township	0	0	0	0	0	194,556	282,133
Mount Laurel Township	6	0	5	2,083	0	3,095,064	1,721,336
New Hanover Township	0	0	0	0	0	7,500	7,000
North Hanover Township	0	2 *	0	0	0	117,208	67,115
Palmyra Borough	1	1 *	0	0	0	191,809	6,720
Pemberton Borough	0	0	0	0	0	21,700	1

MUNICIPAL SUMMARY DATA, August 2013

AREA NAME	AUTHORIZED	AUTHORIZED	HOUSING	OFFICE SPACE	RETAIL SPACE	RESI-	NONRESI-
	HOUSING	HOUSING UNITS	UNITS	AUTHORIZED	AUTHORIZED	DENTIAL	DENTIAL
	UNITS	(CENSUS	CERTIFIED	BY BUILDING	BY BUILDING	(\$ AMOUNT)	(\$ AMOUNT)
		DEFINITIONS)		PERMITS	PERMITS		
Pemberton Township	0	0	0	0	0	352,292	111,750
Riverside Township	0	0 *	0	0	0	89,168	26,800
Riverton Borough	0	1 *	0	0	0	50,867	1,550
Shamong Township	0	1 *	0	0	0	210,750	52,720
Southampton Township	0	1 *	1	0	0	291,768	70,704
Springfield Township	0	0 *	0	0	0	101,078	4,925
Tabernacle Township	1	1 *	0	0	0	402,755	69,195
Washington Township	0	0	0	0	0	79,050	65,750
Westampton Township	0	0	0	0	0	191,531	66,729
Willingboro Township	0	0	0	0	0	732,186	352,960
Woodland Township	0	1 *	1	0	0	3,640	0
Wrightstown Borough	0	0 *	0	0	0	2,500	2,000
Camden County							
Audubon Borough	No report	0 *	No report	No report	No report	No report	No report
Audubon Park Borough	0	0 *	0	0	0	0	7,200
Barrington Borough	0	0	0	0	0	66,713	715
Bellmawr Borough	0	0	0	0	0	127,110	922,250
Berlin Borough	0	0	2	0	0	77,836	85,839
Berlin Township	3	3 *	1	0	0	410,710	56,252
Brooklawn Borough	0	0	0	0	0	20,152	11,145
Camden City	1	140	10	0	0	233,550	1,617,505
Cherry Hill Township	41	41	74	3,133	0	4,944,047	6,745,234
Chesilhurst Borough	0	1 *	0	0	0	0	8,776
Clementon Borough	1	1	0	0	0	265,257	42,800
Collingswood Borough	0	0 *	0	0	0	409,162	95,050
Gibbsboro Borough	0	0	0	0	0	15,100	2,000
Gloucester City	0	0 *	0	0	0	138,769	228,500
Gloucester Township	0	0 *	1	0	0	1,152,492	8,603,003
Haddon Township	0	0 *	0	0	0	400,489	233,892
Haddonfield Borough	0	2 *	2	0	0	671,896	544,874
Haddon Heights Borough	0	8 *	0	0	0	219,999	115,650
Hi-nella Borough	0	0 *	0	0	0	1,011	0
Laurel Springs Borough	No report	0 *	No report	No report	No report	No report	No report
Lawnside Borough	0	0	0	0	0	34,777	0
Lindenwold Borough	24	24	0	0	0	1,433,557	27,200
Magnolia Borough	0	1 *	0	7,381	0	134,168	625,074
Merchantville Borough	0	1 *	0	0	0	83,697	88,850
Mount Ephraim Borough	0	0 *	1	4,292	0	45,059	418,795
Oaklyn Borough	0	0 *	0	0	0	40,218	56,500
Pennsauken Township	0	0	1	0	0	482,290	1,126,023
Pine Hill Borough	23	23	1	0	0	1,797,629	477,100
Pine Valley Borough	0	0 *	0	0	0	300	0
Runnemede Borough	0	1	0	4,798	0	337,666	604,727
Somerdale Borough	5	5	3	0	0	551,497	1,074
Stratford Borough	2	0	0	0	0	176,015	0
Tavistock Borough	0	0 0	0	0	0	0	0
Voorhees Township	0	0	0	0	0	486,585	849,629
Waterford Township	2	4 *	3	0	0	520,066	31,854
Winslow Township	0	0	0	0	0	884,712	1,677,677
Woodlynne Borough	0	0	0	0	0	12,000	0
Cape May County							
Avalon Borough	6	6	6	0	0	3,083,976	96,300
Cape May City	0	1 *	1	0	0	1,078,541	172,641
Cape May Point Borough	0	0	0	0	0	31,720	0
Dennis Township	1	1	0	0	0	289,940	73,970

MUNICIPAL SUMMARY DATA, August 2013

AREA NAME	AUTHORIZED	AUTHORIZED	HOUSING	OFFICE SPACE	RETAIL SPACE	RESI-	NONRESI-
	HOUSING	HOUSING UNITS		AUTHORIZED	AUTHORIZED		
	UNITS	(CENSUS	UNITS	BY BUILDING	BY BUILDING	(\$ AMOUNT)	(\$ AMOUNT)
		DEFINITIONS)	CERTIFIED	PERMITS	PERMITS		
Lower Township	2	1 *	4	0	0	1,006,113	2,974,154
Middle Township	6	6	15	99	0	1,114,952	146,518
North Wildwood City	0	0	1	0	0	271,035	13,500
Ocean City	11	11	15	0	0	3,881,887	1,409,373
Sea Isle City	12	12	6	0	0	2,799,768	135,801
Stone Harbor Borough	3	3	2	0	0	3,518,978	123,950
Upper Township	1	1 *	2	0	0	444,034	68,797
West Cape May Borough	0	1 *	0	0	0	15,541	0
West Wildwood Borough	0	0	2	0	0	4,159	0
Wildwood City	1	1	0	0	0	303,583	76,318
Wildwood Crest Borough	0	0	0	0	0	384,216	1,200
Woodbine Borough	1	1	0	0	0	105,750	80,150
Cumberland County							
Bridgeton City	0	2 *	1	0	0	199,185	267,797
Commercial Township	0	1 *	0	0	0	128,555	79,450
Deerfield Township	0	1 *	2	0	0	78,977	20,409
Downe Township	0	0	0	0	0	40,675	36,000
Fairfield Township	1	0 *	0	0	0	187,745	21,000
Greenwich Township	0	0 *	0	0	0	21,125	37,800
Hopewell Township	0	1 *	0	0	0	18,425	26,501
Lawrence Township	0	0	0	0	0	30,465	0
Maurice River Township	1	1	0	0	0	218,106	121,296
Millville City	1	3 *	1	0	0	525,018	404,698
Shiloh Borough	0	0 *	0	0	0	780	0
Stow Creek Township	0	0	2	0	0	13,950	0
Upper Deerfield Township	0	7 *	1	0	0	84,427	119,924
Vineland City	6	4	9	0	0	1,037,977	1,493,942
Essex County							
Belleville Town	0	0 *	0	0	0	950,538	82,650
Bloomfield Township	0	1 *	0	0	0	1,086,838	33,850
Caldwell Township	0	0 *	0	0	0	177,930	143,700
Cedar Grove Township	1	7 *	0	40,455	0	568,389	674,495
East Orange City	0	2	0	0	0	1,721,974	534,272
Essex Fells Township	0	1 *	0	0	0	582,308	0
Fairfield Township	0	0	0	0	0	1,364,798	596,306
Glen Ridge Borough	0	1 *	1	0	0	569,594	0
Irvington Township	0	0	0	0	0	204,497	253,763
Livingston Township	3	3	0	0	0	3,589,085	236,728
Maplewood Township	0	27 *	1	0	0	1,166,899	363,763
Millburn Township	11	11	6	0	0	4,685,107	1,613,778
Montclair Township	0	0	0	0	0	3,843,427	808,347
Newark City	0	8	3	3,219	0	2,783,511	176,182,685
North Caldwell Borough	4	10 *	14	0	0	1,719,335	2
Nutley Township	0	2 *	2	0	0	848,379	182,320
City of Orange Township	2	58 *	0	0	0	626,774	264,253
Roseland Borough	0	1 *	1	0	0	89,859	555,375
South Orange Village	0	0	0	0	0	1,443,817	705,625
Verona Township	0	22 *	1	0	0	1,169,701	63,300
West Caldwell Township	5	5	8	0	0	2,130,347	168,360
West Orange Township	1	1	2	0	3,330	1,553,648	897,656
Gloucester County							
Clayton Borough	7	7	7	0	0	947,737	18,200
Deptford Township	4	5	0	9,586	99,827	874,829	13,534,067
East Greenwich Township	2	2	5	0	0	697,225	100,300
Elk Township	0	0	0	0	0	3,300	82,300

MUNICIPAL SUMMARY DATA, August 2013

AREA NAME	AUTHORIZED	AUTHORIZED		HOUSING	OFFICE SPACE	RETAIL SPACE		
	HOUSING	HOUSING UNITS		UNITS	AUTHORIZED	AUTHORIZED	RESI-	NONRESI-
	UNITS	(CENSUS		CERTIFIED	BY BUILDING	BY BUILDING	DENTIAL	DENTIAL
		DEFINITIONS)			PERMITS	PERMITS	(\$ AMOUNT)	(\$ AMOUNT)
Franklin Township	4	2 *		2	1,300	0	655,109	97,796
Glassboro Borough	2	11 *		6	0	0	501,281	221,752
Greenwich Township	0	1 *		1	0	9,111	139,829	715,789
Harrison Township	6	6		5	0	0	1,898,575	143,079
Logan Township	0	0 *		0	0	0	111,901	323,887
Mantua Township	0	0 *		0	0	0	317,776	68,100
Monroe Township	15	220		5	0	0	11,741,386	360,328
National Park Borough	0	0		0	0	0	30,271	4,254
Newfield Borough	0	0 *		0	0	0	22,608	0
Paulsboro Borough	0	1 *		0	0	0	65,000	578,000
Pitman Borough	0	0 *		0	0	0	205,403	9,621
South Harrison Township	0	2		0	0	0	260,175	0
Swedesborough Borough	0	5 *		0	0	0	5,700	42,572
Washington Township	0	0		0	0	0	975,942	178,419
Wenonah Borough	0	0		0	0	0	54,718	27,800
West Deptford Township	1	1		1	0	0	451,377	438,185
Westville Borough	0	0		0	0	0	89,016	53,600
Woodbury City	0	0		0	0	0	213,588	31,045
Woodbury Heights Borough	0	0		0	0	0	54,379	72,158
Woolwich Township	58	58		13	0	0	3,420,945	882,573
Hudson County								
Bayonne City	63	63		48	15,400	0	13,326,011	4,131,898
East Newark Borough	0	0		0	0	0	6,300	17,300
Guttenberg Town	0	0		0	0	0	248,702	23,678
Harrison Town	0	0		2	0	0	12,267,150	1,522,424
Hoboken City	223	223		0	0	0	73,260,619	679,101
Jersey City	32	99 *		444	0	0	7,968,539	18,252,145
Kearny Town	0	0 *		1	0	0	259,429	117,376
North Bergen Township	0	0		0	0	0	610,180	1,595,106
Secaucus Town	0	109 *		0	0	0	379,789	6,137,647
Union City	No report	9 *		No report	No report	No report	No report	No report
Weehawken Township	0	36 *		0	0	0	281,681	324,395
West New York Town	0	0		0	790	0	771,350	136,317
Hunterdon County								
Alexandria Township	0	0		0	0	0	112,730	262,797
Bethlehem Township	0	0		0	0	0	81,840	104,986
Bloomsbury Borough	0	0 *		0	0	0	0	14,267
Califon Borough	0	0		0	0	0	118,038	0
Clinton Town	0	0 *		0	0	0	101,286	41,801
Clinton Township	0	0		0	1,708	0	523,002	703,042
Delaware Township	0	4		1	0	0	356,192	139,569
East Amwell Township	0	0 *		0	0	0	150,981	400
Flemington Borough	0	10 *		0	0	0	54,549	88,726
Franklin Township	0	0		0	0	0	143,709	23,000
Frenchtown Borough	0	0		0	0	0	7,470	39,800
Glen Gardner Borough	0	0		0	0	0	11,450	43,390
Hampton Borough	0	0		0	0	0	27,459	9,021
High Bridge Borough	0	0		0	0	0	71,689	5,600
Holland Township	0	0		1	0	0	90,310	92,640
Kingwood Township	0	1 *		0	0	0	0	3,495
Lambertville City	1	1		1	0	0	796,325	76,166
Lebanon Borough	0	0		0	0	0	32,745	12,133
Lebanon Township	0	0		0	0	0	244,761	3,001
Milford Borough	0	0		0	0	0	18,500	37,514
Raritan Township	1	1		4	0	0	1,119,152	729,778

MUNICIPAL SUMMARY DATA, August 2013

AREA NAME	AUTHORIZED	AUTHORIZED	HOUSING	OFFICE SPACE	RETAIL SPACE	RESI-	NONRESI-
	HOUSING	HOUSING UNITS	UNITS	AUTHORIZED	AUTHORIZED	DENTIAL	DENTIAL
	UNITS	(CENSUS	CERTIFIED	BY BUILDING	BY BUILDING	(\$ AMOUNT)	(\$ AMOUNT)
		DEFINITIONS)		PERMITS	PERMITS		
Readington Township	1	0	2	0	0	1,081,324	360,630
Stockton Borough	0	0 *	0	0	0	2,960	0
Tewksbury Township	0	0	1	0	0	692,421	45,446
Union Township	0	0	0	0	0	152,735	138,327
West Amwell Township	0	0	1	0	0	66,257	69,400
Mercer County							
East Windsor Township	0	3 *	1	0	0	571,254	930,476
Ewing Township	0	0	1	0	0	970,574	1,688,024
Hamilton Township	2	2 *	2	0	0	4,200,564	3,166,891
Hightstown Borough	0	0 *	0	0	0	65,976	81,184
Hopewell Borough	0	0	0	0	0	339,359	85,691
Hopewell Township	0	11 *	0	0	0	1,097,528	860,225
Lawrence Township	0	0	0	0	0	1,095,793	3,906,693
Pennington Borough	0	0	0	1	0	263,964	107,295
Princeton Borough	See Princeton (1'	1*					
Princeton (Consolidated 1114)	1	2** *	0	0	0	8,274,481	10,311,257
Trenton City	0	13 *	0	0	0	806,688	2,343,442
Robbinsville Township	2	0 *	8	0	0	1,043,465	7,299,479
West Windsor Township	20	20	15	405	0	2,638,312	6,441,443
Middlesex County							
Carteret Borough	0	27 *	0	0	0	454,062	776,692
Cranbury Township	1	1	0	0	0	616,075	36,155
Dunellen Borough	No report	2 *	No report	No report	No report	No report	No report
East Brunswick Township	24	0	0	0	0	1,224,330	2,309,982
Edison Township	3	3	3	0	0	4,320,449	2,338,319
Helmetta Borough	0	0	0	0	0	19,729	0
Highland Park Borough	0	7 *	0	0	0	0	235,000
Jamesburg Borough	0	0	0	0	0	98,513	9,000
Old Bridge Township	8	8	2	0	0	4,163,358	566,258
Metuchen Borough	1	1	2	0	0	1,181,066	783,849
Middlesex Borough	0	0 *	0	0	0	302,277	79,956
Milltown Borough	1	0 *	0	0	0	289,063	194,595
Monroe Township	34	34	30	6,966	5,535	6,054,410	6,069,422
New Brunswick City	1	31	0	0	0	1,770,137	2,707,243
North Brunswick Township	1	0	8	0	0	832,706	424,927
Perth Amboy City	1	0	15	0	0	716,130	1,749,781
Piscataway Township	0	0	1	0	0	1,514,401	11,178,039
Plainsboro Township	0	0	0	0	0	1,041,653	7,002,555
Sayreville Borough	6	6	0	0	0	2,351,637	878,962
South Amboy City	1	1	0	0	0	218,992	376,391
South Brunswick Township	8	8	9	2,719	0	2,975,137	11,120,707
South Plainfield Borough	0	2 *	1	3,000	0	93,849	1,301,642
South River Borough	0	3 *	1	0	0	370,300	269,079
Spotswood Borough	0	2 *	0	0	0	102,690	21,605
Woodbridge Township	80	0	2	0	1,788	5,952,735	4,360,759
Monmouth County							
Allenhurst Borough	0	0	0	0	0	625	12,460
Allentown Borough	0	0 *	0	0	0	61,715	1,000
Asbury Park City	0	1 *	0	0	0	572,974	264,650
Atlantic Highlands Borough	0	0	0	0	0	440,974	241,900
Avon-by-the-Sea Borough	No report	7 *	No report	No report	No report	No report	No report
Belmar Borough	3	3	1	0	0	1,406,420	176,256
Bradley Beach Borough	0	1 *	0	0	0	376,841	200
Brielle Borough	0	0	3	0	0	87,722	24,603
Colts Neck Township	0	1 *	0	0	0	796,906	87,501

MUNICIPAL SUMMARY DATA, August 2013

AREA NAME	AUTHORIZED	AUTHORIZED	HOUSING	OFFICE SPACE	RETAIL SPACE	RESI-	NONRESI-
	HOUSING	HOUSING UNITS		AUTHORIZED	AUTHORIZED		
	UNITS	(CENSUS	UNITS	BY BUILDING	BY BUILDING	(\$ AMOUNT)	(\$ AMOUNT)
		DEFINITIONS)	CERTIFIED	PERMITS	PERMITS		
Deal Borough	0	0 *	1	0	0	78,649	4,100
Eatontown Borough	4	8 *	0	0	0	741,382	1,544,877
Englishtown Borough	1	1	0	0	0	211,040	18,850
Fair Haven Borough	2	2	2	0	0	1,322,120	0
Farmingdale Borough	0	0	1	0	0	13,429	0
Freehold Borough	1	1	0	0	0	903,090	1,080,743
Freehold Township	No report	0 *	No report	No report	No report	No report	No report
Highlands Borough	6	4	0	0	0	1,215,494	53,750
Holmdel Township	4	1 *	1	0	0	1,366,216	214,689
Howell Township	23	35 *	47	0	0	4,249,183	1,155,545
Interlaken Borough	0	0	0	0	0	12,850	0
Keansburg Borough	1	1	2	0	0	756,850	934,045
Keyport Borough	0	1 *	0	0	0	143,916	1,041,065
Little Silver Borough	3	2 *	4	0	0	953,398	536,831
Loch Arbour Village	0	0 *	0	0	0	42,100	0
Long Branch City	2	2	4	0	0	1,814,560	470,178
Manalapan Township	9	0	10	0	0	3,619,002	355,592
Manasquan Borough	6	6	4	0	0	1,695,037	60,380
Marlboro Township	4	22	7	0	0	7,314,775	5,122,569
Matawan Borough	0	0 *	0	0	0	210,795	112,779
Aberdeen Township	7	7	10	0	0	1,182,069	640,936
Middletown Township	0	4 *	4	0	0	3,270,589	560,157
Millstone Township	0	0	0	0	0	651,779	254,943
Monmouth Beach Borough	No report	1 *	No report	No report	No report	No report	No report
Neptune Township	0	0 *	0	0	0	919,308	1,665,262
Neptune City Borough	0	0	0	0	0	197,425	8,375
Tinton Falls Borough	0	13 *	0	0	0	336,865	112,157
Ocean Township	2	4 *	9	0	0	1,504,717	1,213,525
Oceanport Borough	3	3	0	0	0	879,438	9,567
Hazlet Township	0	1 *	0	0	0	653,244	0
Red Bank Borough	0	3 *	1	0	0	212,781	373,329
Roosevelt Borough	0	0	0	0	0	11,200	18,000
Rumson Borough	3	3	0	301	0	3,317,474	210,700
Sea Bright Borough	No report	0 *	0	No report	No report	No report	No report
Sea Girt Borough	1	1	1	0	0	1,145,747	41,001
Shrewsbury Borough	8	7 *	4	0	0	1,232,268	72,694
Shrewsbury Township	0	0 *	0	0	0	0	8,848
Lake Como Borough	0	0	0	0	0	33,923	91,101
Spring Lake Borough	0	0	3	0	0	314,869	36,200
Spring Lake Heights Boro	0	0	2	0	0	218,590	500
Union Beach Borough	18	17	0	0	0	4,556,856	52,701
Upper Freehold Township	0	0	0	0	0	153,160	257,200
Wall Township	10	10	2	0	0	2,239,850	2,918,494
West Long Branch Borough	0	0 *	0	0	0	353,331	332,497
Morris County							
Boonton Town	0	2 *	0	0	0	274,455	27,600
Boonton Township	2	2	0	0	0	1,241,019	0
Butler Borough	0	0	1	0	0	137,835	22,279
Chatham Borough	0	1 *	0	0	0	98,475	750
Chatham Township	3	3	1	0	0	3,877,348	39,702
Chester Borough	0	6 *	0	0	0	19,770	27,500
Chester Township	No report	0 *	No report	No report	No report	No report	No report
Denville Township	No report	1 *	No report	No report	No report	No report	No report
Dover Town	0	0	1	0	0	128,708	527,723
East Hanover Township	0	2 *	0	0	0	308,910	499,550

MUNICIPAL SUMMARY DATA, August 2013

AREA NAME	AUTHORIZED	AUTHORIZED	HOUSING UNITS CERTIFIED	OFFICE SPACE	RETAIL SPACE	RESI- DENTIAL (\$ AMOUNT)	NONRESI- DENTIAL (\$ AMOUNT)
	HOUSING UNITS	HOUSING UNITS (CENSUS DEFINITIONS)		AUTHORIZED BY BUILDING PERMITS	AUTHORIZED BY BUILDING PERMITS		
Florham Park Borough	1	9 *	1	0	0	1,209,042	1,604,495
Hanover Township	12	20 *	5	0	0	1,376,144	404,600
Harding Township	0	0	1	0	0	825,434	260,374
Jefferson Township	2	0 *	2	0	0	1,198,037	765,221
Kinnelon Borough	0	2 *	0	0	0	411,207	0
Lincoln Park Borough	0	0	0	1,700	0	188,546	48,719
Madison Borough	1	1	1	0	0	1,025,358	2,023,412
Mendham Borough	0	0	0	0	0	462,067	330,985
Mendham Township	0	0	0	0	0	454,795	107,690
Mine Hill Township	0	0 *	0	0	0	95,509	0
Montville Township	1	1	2	0	0	1,608,783	973,548
Morris Township	0	3 *	0	0	0	2,300,434	560,522
Morris Plains Borough	0	12 *	5	0	0	328,668	379,545
Morristown Town	0	0	1	1,033	0	588,297	2,498,882
Mountain Lakes Borough	0	1 *	2	0	0	261,452	128,000
Mount Arlington Borough	1	1	1	0	0	205,340	118,000
Mount Olive Township	4	4	6	0	0	1,309,669	682,059
Netcong Borough	0	1 *	0	0	0	29,146	13,866
Parsippany-Troy Hills Twp	5	5	1	0	0	3,298,366	2,940,894
Long Hill Township	0	0	0	0	0	707,518	0
Pequannock Township	2	2	0	3,384	0	1,279,601	1,045,367
Randolph Township	1	1	2	0	0	1,118,273	1,965,330
Riverdale Borough	0	0	4	0	0	79,817	0
Rockaway Borough	0	0 *	0	0	0	225,651	142,780
Rockaway Township	0	7 *	1	0	0	521,014	484,628
Roxbury Township	2	2	1	0	0	938,599	185,759
Victory Gardens Borough	0	0	0	0	0	1,074	0
Washington Township	0	0 *	1	0	0	1,234,216	327,635
Wharton Borough	0	0 *	1	0	0	104,773	2,000
Ocean County							
Barneget Light Borough	1	1	0	0	0	412,355	800
Bay Head Borough	0	0	0	0	0	2,176,096	9,500
Beach Haven Borough	0	0	0	0	0	695,765	36,850
Beachwood Borough	1	1	1	0	0	295,731	15,600
Berkeley Township	13	8	3	0	0	2,823,231	76,340
Brick Township	15	1	3	0	0	6,674,526	1,527,136
Toms River Township	58	8 *	3	2	0	13,629,545	2,486,982
Eagleswood Township	0	1 *	0	0	0	41,650	58,201
Harvey Cedars Borough	0	0	2	0	0	102,400	31,000
Island Heights Borough	0	0	0	0	0	43,350	0
Jackson Township	7	7	0	0	4,000	2,635,316	1,754,752
Lacey Township	13	6 *	6	0	0	3,231,157	374,877
Lakehurst Borough	0	0	7	0	0	39,402	0
Lakewood Township	102	100	39	5,920	0	12,016,904	3,969,296
Lavallette Borough	10	8	4	0	0	2,523,101	67,350
Little Egg Harbor Township	23	10	4	4,225	0	3,129,454	907,750
Long Beach Township	9	10	7	0	0	4,323,816	500
Manchester Township	7	0	6	0	0	1,851,630	258,326
Mantoloking Borough	3	0 *	0	0	0	3,489,233	42,175
Ocean Township	3	0	10	0	0	1,027,674	43,100
Ocean Gate Borough	2	2	0	0	0	863,919	31,500
Pine Beach Borough	1	0	0	0	0	209,503	0
Plumsted Township	2	2 *	1	0	0	807,935	55,913
Point Pleasant Borough	1	3 *	5	0	0	987,761	137,340
Point Pleasant Beach Boro	6	1 *	1	0	0	2,349,282	85,664

MUNICIPAL SUMMARY DATA, August 2013

AREA NAME	AUTHORIZED	AUTHORIZED	HOUSING	OFFICE SPACE	RETAIL SPACE	RESI-	NONRESI-
	HOUSING	HOUSING UNITS	UNITS	AUTHORIZED	AUTHORIZED	DENTIAL	DENTIAL
	UNITS	(CENSUS	CERTIFIED	BY BUILDING	BY BUILDING	(\$ AMOUNT)	(\$ AMOUNT)
		DEFINITIONS)		PERMITS	PERMITS		
Seaside Heights Borough	0	3	0	0	0	68,485	40,786
Seaside Park Borough	0	0 *	1	0	0	472,771	4,000
Ship Bottom Borough	3	3	0	0	0	1,248,529	341,750
South Toms River Borough	0	0	0	0	0	73,481	5,000
Stafford Township	39	37	8	0	0	6,482,574	340,586
Surf City Borough	0	0	1	0	0	243,494	0
Tuckerton Borough	0	0	0	0	0	0	612,352
Barneгат Township	7	7	7	0	0	1,604,369	60,742
Passaic County							
Bloomington Borough	0	0	0	0	0	372,975	51,950
Clifton City	6	6	6	0	0	2,550,463	3,749,770
Haledon Borough	18	18	0	0	0	946,744	2,491
Hawthorne Borough	0	0	1	0	0	407,972	242,295
Little Falls Township	0	0	0	1,536	0	306,044	6,827,424
North Haledon Borough	0	0	0	0	0	220,468	0
Passaic City	0	18 *	0	0	19,656	1,116,202	2,696,687
Paterson City	No report	5 *	No report	No report	No report	No report	No report
Pompton Lakes Borough	0	1 *	0	0	0	277,545	80,546
Prospect Park Borough	0	0 *	0	0	0	21,365	0
Ringwood Borough	0	1 *	0	0	0	443,129	46,420
Totowa Borough	0	1 *	0	0	0	347,037	1,499,148
Wanaque Borough	4	4	1	0	0	548,739	518,730
Wayne Township	1	1	1	2,062	0	4,084,046	1,706,171
West Milford Township	0	2 *	1	0	0	805,340	81,200
Woodland Park Borough	0	21 *	10	0	0	234,091	160,930
Salem County							
Alloway Township	2	2	0	0	0	125,000	17,500
Elmer Borough	0	0	0	0	0	26,550	15,500
Elsinboro Township	0	0	0	0	0	25,855	0
Lower Alloways Creek Twp	0	0	0	0	0	103,514	33,580
Mannington Township	0	0	0	0	0	58,958	104,650
Oldmans Township	0	0	0	0	0	77,600	39,650
Penns Grove Borough	0	0	0	0	0	34,138	0
Pennsville Township	0	0 *	0	0	0	107,877	131,294
Pilesgrove Township	0	0	0	0	0	113,039	8,400
Pittsgrove Township	0	0	1	0	0	273,673	60,639
Quinton Township	0	0	1	0	0	15,297	46,986
Salem City	0	0	0	0	0	21,058	1,700
Carneys Point Township	1	2 *	0	0	0	331,792	13,418,471
Upper Pittsgrove Township	1	1	1	0	0	10,467	67,771
Woodstown Borough	0	0	0	0	0	9,949	0
Somerset County							
Bedminster Township	0	0	0	0	0	344,980	3,536,928
Bernards Township	1	1	1	0	0	2,633,045	648,749
Bernardsville Borough	1	0 *	0	0	0	1,097,963	144,141
Bound Brook Borough	0	8 *	0	0	0	25,256	0
Branchburg Township	0	0	1	0	0	836,457	2,072,792
Bridgewater Township	3	0 *	3	0	0	3,119,347	2,527,287
Far Hills Borough	0	0 *	0	0	0	87,475	0
Franklin Township	9	8	5	0	0	3,353,505	3,860,895
Green Brook Township	0	0	0	0	0	317,840	136,170
Hillsborough Township	8	8	6	0	0	3,397,966	741,129
Manville Borough	0	0	0	0	0	241,212	194,422
Millstone Borough	0	0	0	0	0	86,000	4,725
Montgomery Township	9	2 *	2	0	0	2,721,734	196,728

MUNICIPAL SUMMARY DATA, August 2013

AREA NAME	AUTHORIZED	AUTHORIZED	HOUSING	OFFICE SPACE	RETAIL SPACE	RESI-	NONRESI-
	HOUSING	HOUSING UNITS	UNITS	AUTHORIZED	AUTHORIZED	DENTIAL	DENTIAL
	UNITS	(CENSUS	CERTIFIED	BY BUILDING	BY BUILDING	(\$ AMOUNT)	(\$ AMOUNT)
		DEFINITIONS)		PERMITS	PERMITS		
North Plainfield Borough	No report	0 *	No report	No report	No report	No report	No report
Peapack-Gladstone Borough	1	1	0	0	0	466,211	64,855
Raritan Borough	48	48	0	0	0	3,299,448	451,455
Rocky Hill Borough	0	0	0	0	0	7,600	22,250
Somerville Borough	0	0 *	0	0	0	253,278	116,015
South Bound Brook Boro	0	8 *	0	0	0	86,855	533,100
Warren Township	2	2	5	0	0	2,755,209	1,284,746
Watchung Borough	0	0	0	0	0	97,790	235,831
Sussex County							
Andover Borough	0	0	0	0	0	0	5,600
Andover Township	0	0	0	0	0	126,549	56,935
Branchville Borough	0	0	0	0	0	46,200	251,100
Byram Township	0	0 *	0	0	0	251,756	40,842
Frankford Township	2	2	1	0	0	941,393	13,070
Franklin Borough	0	0 *	0	0	0	43,715	29,249
Fredon Township	0	0	0	0	0	89,631	2,840,761
Green Township	4	4	1	0	0	943,956	219,058
Hamburg Borough	0	0	0	0	0	48,897	44,695
Hampton Township	0	0 *	0	0	0	137,995	207,180
Hardyston Township	2	2	1	0	0	624,664	190,507
Hopatcong Borough	2	2 *	1	0	0	622,476	118,150
Lafayette Township	0	0 *	0	0	0	39,487	61,995
Montague Township	0	0	1	1,000	0	72,688	90,825
Newton Town	0	0 *	0	0	0	64,525	3,710,320
Ogdensburg Borough	0	0	0	0	0	47,436	5,760
Sandyston Township	0	0 *	0	0	0	36,699	42,000
Sparta Township	0	5 *	2	0	0	1,207,548	411,030
Stanhope Borough	0	0 *	0	0	0	265,128	0
Stillwater Township	0	1 *	0	0	0	17,700	117,490
Sussex Borough	0	0 *	0	0	0	33,580	20,000
Vernon Township	0	2 *	0	0	0	593,854	18,101
Walpack Township	No report	0	No report	No report	No report	No report	No report
Wantage Township	1	1	10	0	0	607,974	163,513
Union County							
Berkeley Heights Township	0	2 *	0	0	0	316,623	2,848,727
Clark Township	0	12 *	0	0	0	791,108	459,900
Cranford Township	0	17 *	0	0	0	1,290,323	110,412
Elizabeth City	32	8 *	12	0	0	2,116,331	958,585
Fanwood Borough	0	1 *	0	0	0	310,330	206,000
Garwood Borough	72	8 *	0	0	0	225,730	15,742,500
Hillside Township	0	2 *	0	0	0	252,512	36,657
Kenilworth Borough	0	0	1	2,726	0	481,690	246,760
Linden City	1	1	0	0	0	1,205,586	10,412,559
Mountainside Borough	0	1 *	1	0	0	825,507	101,928
New Providence Borough	0	2 *	0	0	0	784,141	529,250
Plainfield City	4	0 *	0	0	0	778,146	60,431
Rahway City	117	1	0	0	0	1,622,609	285,331
Roselle Borough	0	0	0	0	0	516,975	2,105
Roselle Park Borough	0	2 *	0	0	0	84,343	34,245
Scotch Plains Township	0	3 *	0	0	0	2,059,461	12,900
Springfield Township	1	1	2	0	0	907,900	767,299
Summit City	2	2	8	0	0	7,796,088	2,967,650
Union Township	2	2	0	0	0	1,810,700	761,275
Westfield Town	5	4 *	0	0	0	4,409,199	314,693
Winfield Township	0	0	0	0	0	4,600	0

MUNICIPAL SUMMARY DATA, August 2013

AREA NAME	AUTHORIZED	AUTHORIZED	HOUSING	OFFICE SPACE	RETAIL SPACE	RESI-	NONRESI-
	HOUSING	HOUSING UNITS	UNITS	AUTHORIZED	AUTHORIZED	DENTIAL	DENTIAL
	UNITS	(CENSUS	CERTIFIED	BY BUILDING	BY BUILDING	(\$ AMOUNT)	(\$ AMOUNT)
		DEFINITIONS)		PERMITS	PERMITS		
Warren County							
Allamuchy Township	1	1	0	0	0	248,891	11,800
Alpha Borough	0	0	0	0	0	23,299	3,000
Belvidere Town	0	0 *	0	0	0	74,803	200
Blairstown Township	0	0	0	81	0	97,205	41,612
Franklin Township	0	0 *	0	0	0	32,550	113,300
Frelinghuysen Township	0	1 *	0	0	0	3,915	74,509
Greenwich Township	0	0	0	0	0	44,605	44,416
Hackettstown Town	0	14 *	0	0	0	448,570	135,446
Hardwick Township	0	0	1	0	0	40,775	19,250
Harmony Township	0	0	0	0	0	216,618	182,632
Hope Township	0	0	0	0	0	8,585	30,000
Independence Township	0	1 *	0	0	0	60,204	21,450
Knowlton Township	0	0	0	0	0	84,450	121,975
Liberty Township	0	0	0	0	0	96,065	27,000
Lopatcong Township	0	6 *	4	0	0	95,364	137,892
Mansfield Township	0	0	0	0	0	220,970	97,051
Oxford Township	0	0	1	0	0	25,400	29,960
Pahaquary Township	See Hardwick Twp.						
Phillipsburg Town	0	1 *	0	0	0	286,487	199,808
Pohatcong Township	No report	0 *	No report	No report	No report	No report	No report
Washington Borough	0	0	5	0	0	583,426	183,150
Washington Township	0	0	0	0	0	106,084	69,350
White Township	0	0	0	0	0	46,647	279,920
State Buildings	0		0	107,500	0	0	52,058,116

The New Jersey
CONSTRUCTION REPORTER

AUGUST 2013 DATA

DISTRIBUTED BY THE

New Jersey Department of
COMMUNITY AFFAIRS
DIVISION OF CODES AND STANDARDS
101 South Broad Street,
PO Box 802
Trenton, NJ 08625-0802
(609) 292-7898
www.nj.gov/dca/divisions/codes/reporter/



DEPARTMENT OF
Community
AFFAIRS

In cooperation with the
STATE DATA CENTER of the
NEW JERSEY DEPARTMENT OF LABOR AND
WORKFORCE DEVELOPMENT

Production and Distribution Staff

RICHARD BYRNE
CYNTHIA CORDERO
LYNN FERRARA
AMY FENWICK FRANK
JOHN LAGO
CHARLES PIERSON, JR.
ANTHONY SCHIAVINO
SUSAN WOIDILL

2013