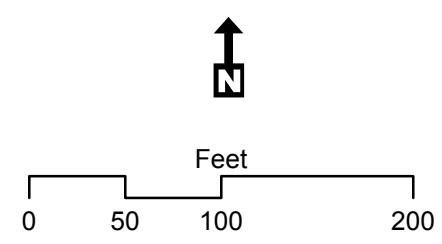




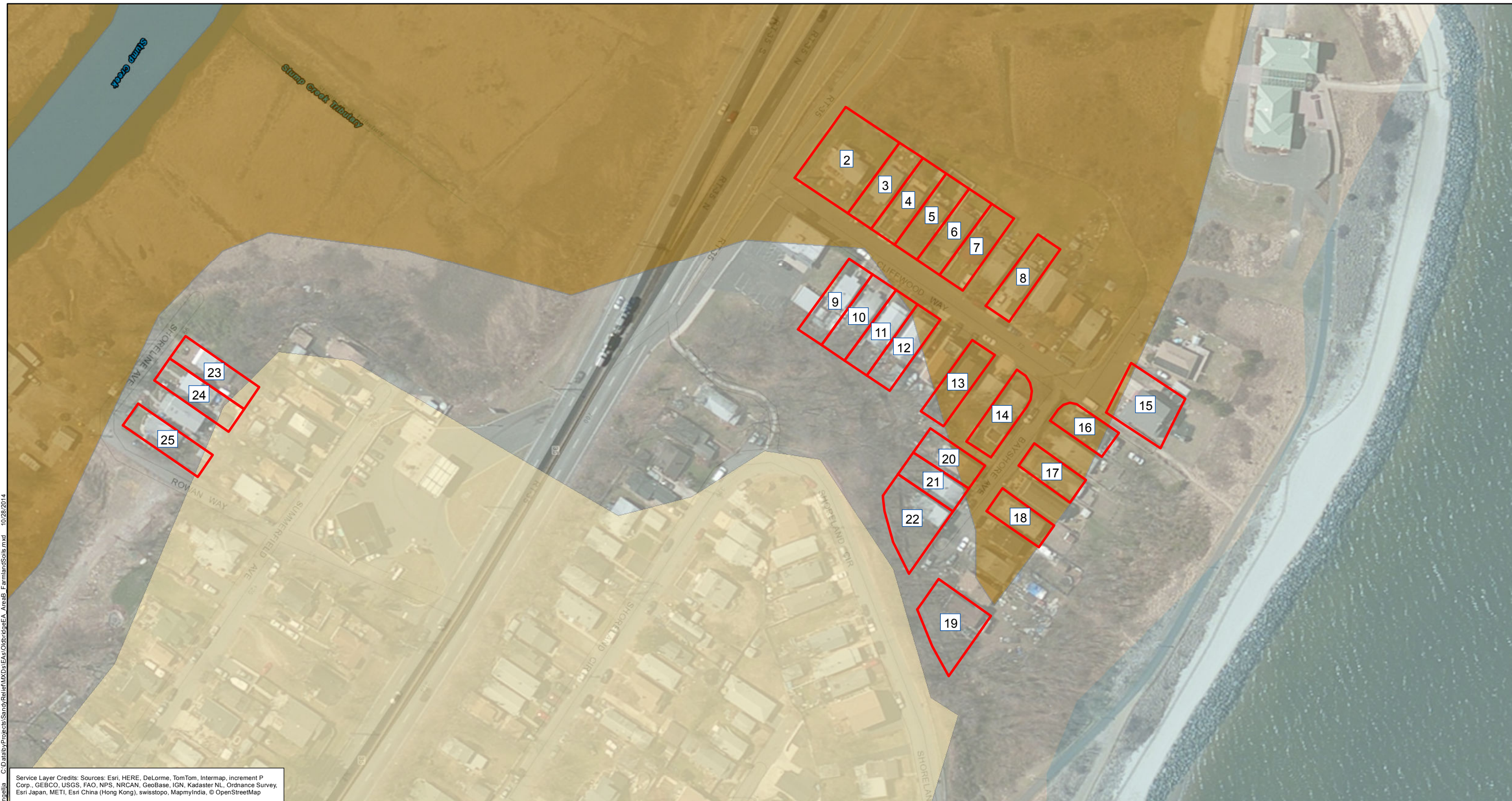
C:\Data\Projects\SandyRelief\MXD\AreaA\FarmlandSoils.mxd 10/28/2014

Service Layer Credits: Sources: Esri, HERE, DeLorme, TomTom, Intermap, increment P Corp., GEBCO, USGS, FAO, NPS, NRCAN, GeoBase, IGN, Kadaster NL, Ordnance Survey, Esri Japan, METI, Esri China (Hong Kong), swisstopo, MapmyIndia, © OpenStreetMap

- Proposed Activity Site
- Prime Farmland Soils
- All areas are prime farmland
- Farmland of statewide importance
- Farmland of unique importance



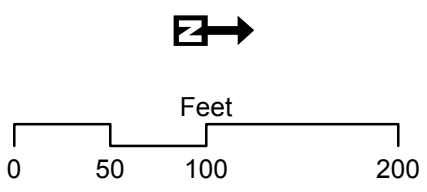
**Blue Acres - Old Bridge
Area A
Farmland Protection
Old Bridge Township, Middlesex County**



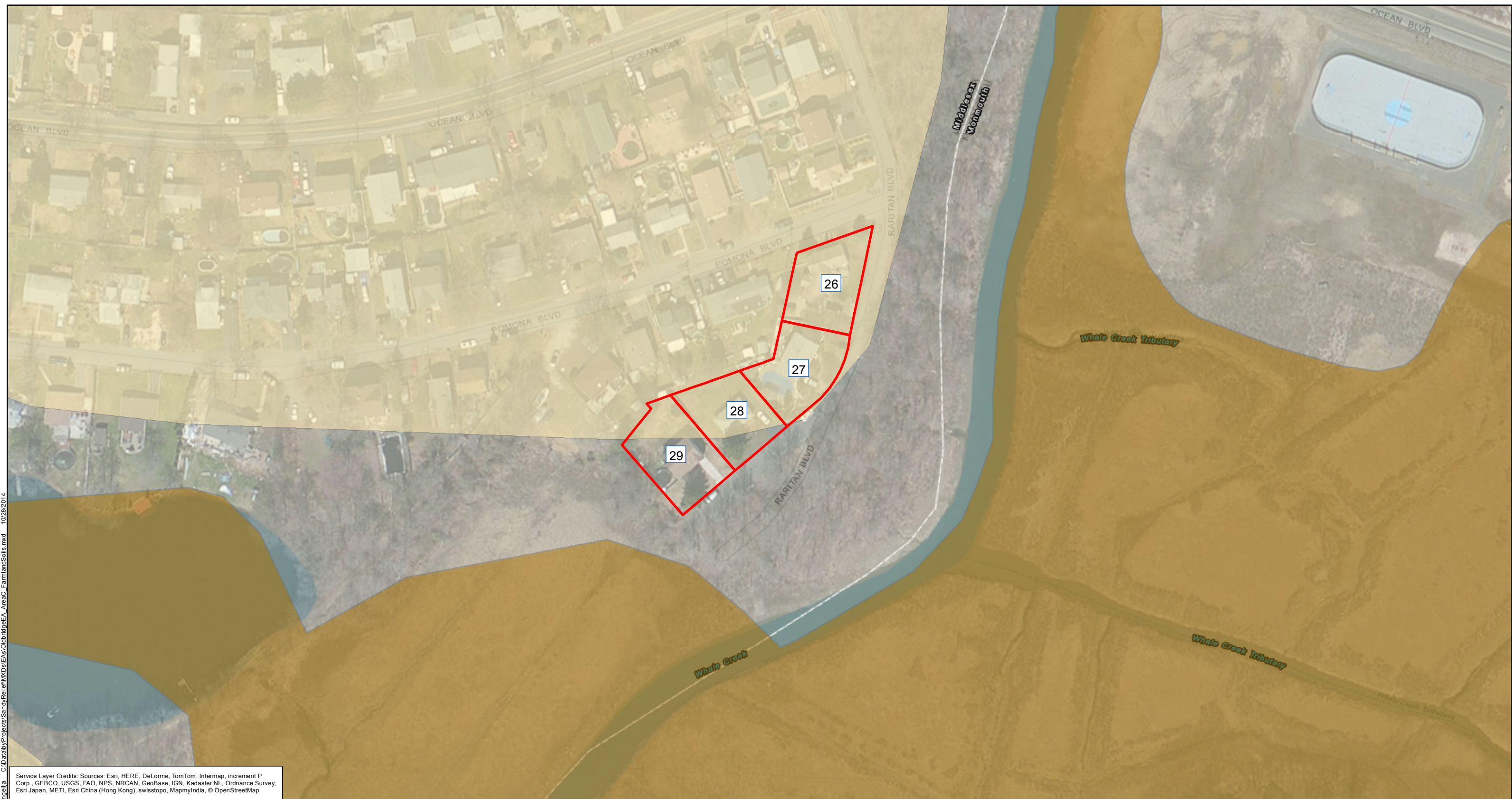
C:\Data\Projects\SandyRelief\MXD\AsOlb\bridgeEA_AreaB_FarmlandSoils.mxd 10/28/2014

Service Layer Credits: Sources: Esri, HERE, DeLorme, TomTom, Intermap, increment P Corp., GEBCO, USGS, FAO, NPS, NRCAN, GeoBase, IGN, Kadaster NL, Ordnance Survey, Esri Japan, METI, Esri China (Hong Kong), swisstopo, MapmyIndia, © OpenStreetMap

- Proposed Activity Site
- Prime Farmland Soils
- All areas are prime farmland
- Farmland of statewide importance
- Farmland of unique importance



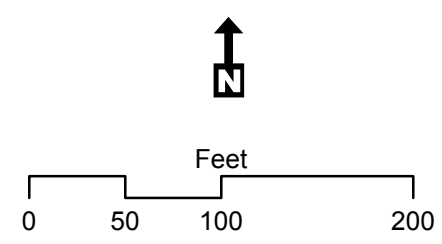
**Blue Acres - Old Bridge
Area B
Farmland Protection
Old Bridge Township, Middlesex County**



C:\Data\Projects\SandyRelief\MXD\AsEs\OldBridgeEA_AreaC_FarmlandSoils.mxd 10/28/2014
 Angella

Service Layer Credits: Sources: Esri, HERE, DeLorme, TomTom, Intermap, increment P Corp., GEBCO, USGS, FAO, NPS, NRCAN, GeoBase, IGN, Kadaster NL, Ordnance Survey, Esri Japan, METI, Esri China (Hong Kong), swisstopo, MapmyIndia, © OpenStreetMap

- Proposed Activity Site
- Prime Farmland Soils
 - All areas are prime farmland
 - Farmland of statewide importance
 - Farmland of unique importance



Blue Acres - Old Bridge
Area C
Farmland Protection
Old Bridge Township, Middlesex County