



U.S. Fish and Wildlife Service

Natural Resources of Concern

This resource list is to be used for planning purposes only — it is not an official species list.

Endangered Species Act species list information for your project is available online and listed below for the following FWS Field Offices:

New Jersey Ecological Services Field Office
927 NORTH MAIN STREET, BUILDING D
PLEASANTVILLE, NJ 8232
(609) 646-9310
<http://www.fws.gov/northeast/njfieldoffice/Endangered/consultation.html>

Project Name:

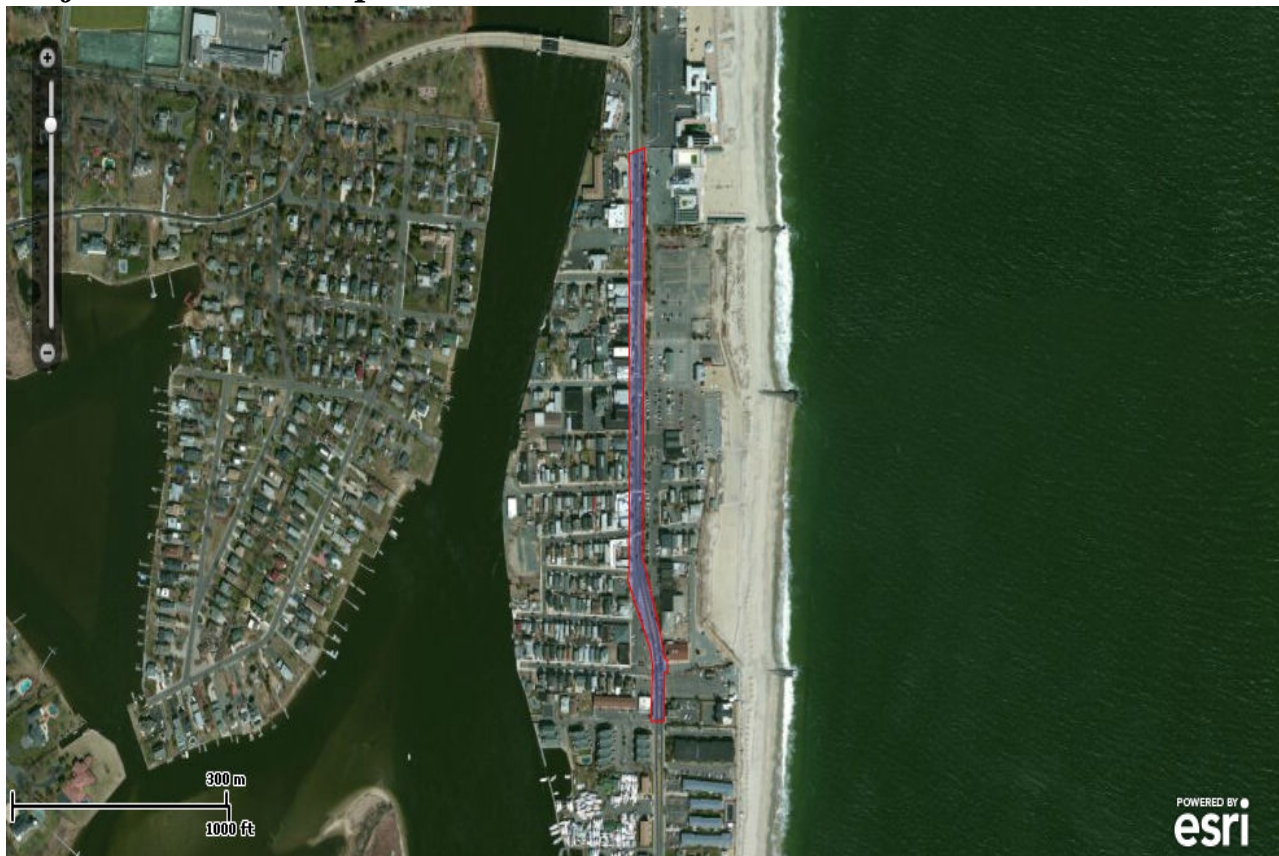
NCR39452



U.S. Fish and Wildlife Service

Natural Resources of Concern

Project Location Map:



Project Counties:

Monmouth, NJ

Geographic coordinates (Open Geospatial Consortium Well-Known Text, NAD83):

MULTIPOLYGON (((-73.9739808 40.3647976, -73.9740131 40.3607837, -73.9737234 40.3600459, -73.9736644 40.359817, -73.9736081 40.359774, -73.9736001 40.3596596, -73.9736618 40.3596575, -73.9736616 40.3591753, -73.9738816 40.3591794, -73.9738547 40.3597394, -73.973895 40.3598927, -73.9742598 40.3605517, -73.9742223 40.3642826, -73.9742411 40.3647424, -73.9739808 40.3647976)))

Project Type:

** Other **



Natural Resources of Concern

Endangered Species Act Species List ([USFWS Endangered Species Program](#))

There are a total of 2 threatened, endangered, or candidate species on your species list. Species on this list should be considered in an effects analysis for your project and could include species that exist in another geographic area. For example, certain fishes may appear on the species list because a project could cause downstream effects on the species. Critical habitats listed under the **Has Critical Habitat** column may or may not lie within your project area. See the **Critical habitats within your project area** section below for critical habitat that lies within your project area. Please contact the designated FWS office if you have questions.

Species that should be considered in an effects analysis for your project:

Birds	Status		Has Critical Habitat	Contact
Piping Plover (<i>Charadrius melodus</i>) Population: except Great Lakes watershed	Threatened	species info	Final designated critical habitat Final designated critical habitat	New Jersey Ecological Services Field Office
Flowering Plants				
Seabeach amaranth (<i>Amaranthus pumilus</i>)	Threatened	species info		New Jersey Ecological Services Field Office

Critical habitats within your project area:

There are no critical habitats within your project area.

FWS National Wildlife Refuges ([USFWS National Wildlife Refuges Program](#))

There are no refuges found within the vicinity of your project.

FWS Migratory Birds ([USFWS Migratory Bird Program](#))

Most species of birds, including eagles and other raptors, are protected under the Migratory Bird Treaty Act (16 U.S.C. 703). Bald eagles and golden eagles receive additional protection under the [Bald and Golden Eagle Protection Act](#) (16 U.S.C. 668). The Service's [Birds of Conservation Concern \(2008\)](#) report identifies species, subspecies, and populations of all migratory nongame birds that, without additional



U.S. Fish and Wildlife Service

Natural Resources of Concern

conservation actions, are likely to become listed under the Endangered Species Act as amended (16 U.S.C 1531 et seq.).

Migratory bird information is not available for your project location.

NWI Wetlands ([USFWS National Wetlands Inventory](#)).

The U.S. Fish and Wildlife Service is the principal Federal agency that provides information on the extent and status of wetlands in the U.S., via the National Wetlands Inventory Program (NWI). In addition to impacts to wetlands within your immediate project area, wetlands outside of your project area may need to be considered in any evaluation of project impacts, due to the hydrologic nature of wetlands (for example, project activities may affect local hydrology within, and outside of, your immediate project area). It may be helpful to refer to the USFWS National Wetland Inventory website. The designated FWS office can also assist you. Impacts to wetlands and other aquatic habitats from your project may be subject to regulation under Section 404 of the Clean Water Act, or other State/Federal Statutes. Project Proponents should discuss the relationship of these requirements to their project with the Regulatory Program of the appropriate [U.S. Army Corps of Engineers District](#).

There are no wetlands found within the vicinity of your project.