

CITY: MILLERSVILLE/CRANBURY DIV/GROUP: ENV/CAD DB/JG/TEATTO LD: PIC: PM: G.BRAUN TM: JLUCCINI LVR: ON: OFF-REF
 C:\ENV\CAD\CRANBURY\ACT\TWD\00076\0002\00010\RAWP\MAR2011\MD00076\005.dwg LAYOUT: A. SAVED: 12/17/2014 9:21 AM ACADVER: 18.1 S (LMS TECH) PAGES: 18. PLOTSTYLETABLE: GRU-CAPE_MAY.CTB PLOTTED: 12/17/2014 9:24 AM BY: FATTO, TRACEY
 XREFS: IMAGES: PROJECTNAME: MDD0076\00076\005.jpg

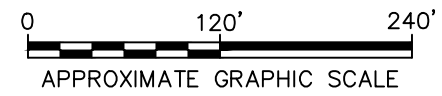
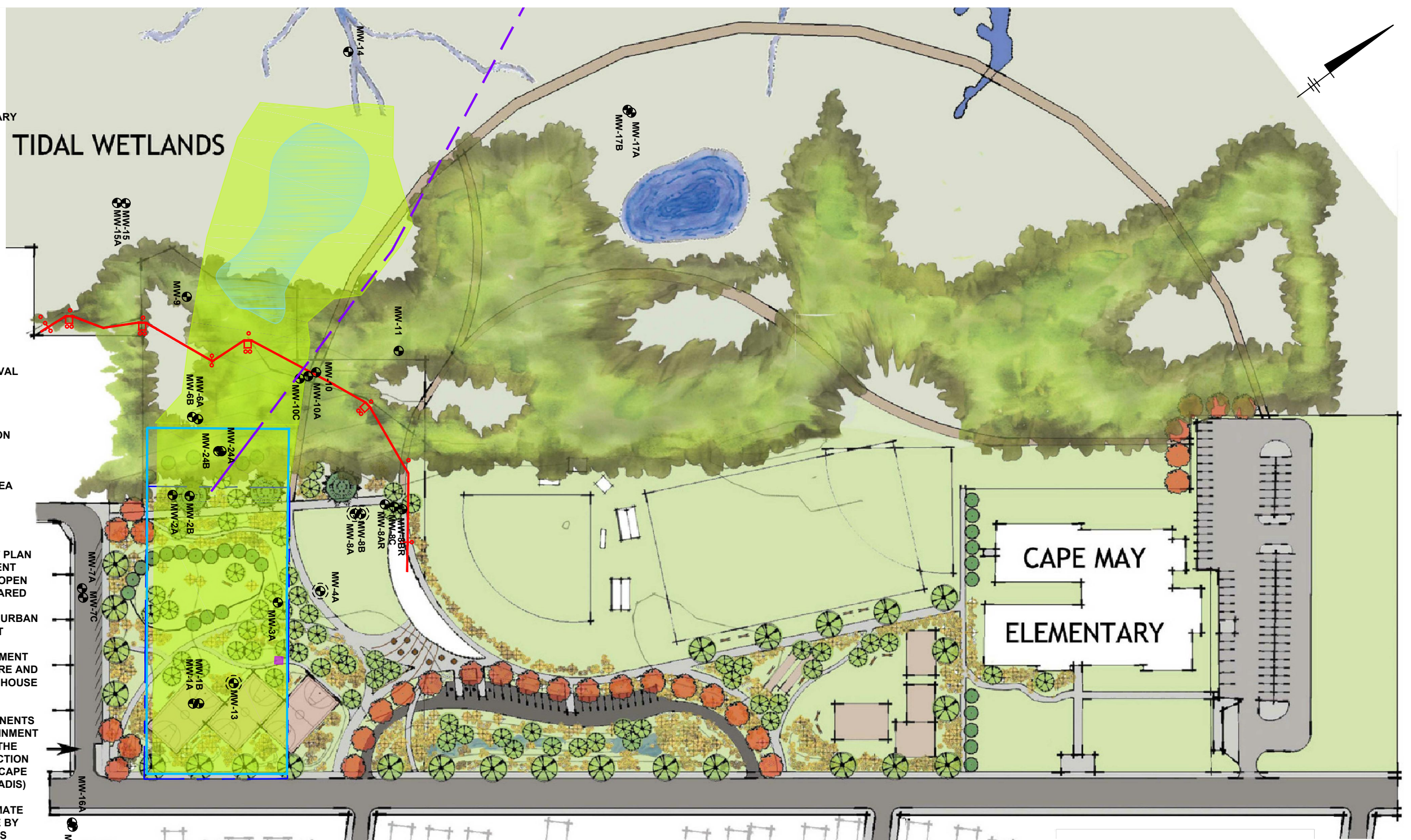
LEGEND

- FORMER MGP SITE BOUNDARY
- PROPOSED PRIMARY CONTAINMENT WALL
- PROPOSED SECONDARY CONTAINMENT/TREATMENT WALL
- PUMPING WELL
- MONITORING WELL (EXISTING)
- ⊙ MONITORING WELL (ABANDONED)
- CLAY PIPE TO BE REMOVED DURING PHASE II
- CLAY PIPE TO BE REMOVED DURING PHASE I
- AREA OF SOIL REMOVAL TO 3.5 FEET BGS TO ADDRESS VISIBLE MGP-IMPACTS
- SURFACE EXCAVATION AREA (0 TO 2 FEET BGS)
- UST EXCAVATION AREA

NOTES:

1. PROPOSED DEVELOPMENT PLAN FROM UNDATED PDF DOCUMENT TITLED "LAFAYETTE STREET OPEN SPACE-ROTARY PARK" PREPARED BY WELLS APPEL PLANNING. LANDSCAPE ARCHITECTURE. URBAN DESIGN, 1516 LOCUST STREET PHILADELPHIA, PA 19102 AND TEMPLE UNIVERSITY DEPARTMENT OF LANDSCAPE ARCHITECTURE AND HORTICULTURE, 580 MEETINGHOUSE ROAD, AMBLER PA, 19002.
2. REMEDIAL SYSTEM COMPONENTS (MONITORING WELLS, CONTAINMENT WALLS) FROM FIGURE 12 OF THE FEBRUARY 2011 REMEDIAL ACTION WORK PLAN FOR THE JCP&L CAPE MAY FORMER MGP SITE (ARCADIS)
3. ALL LOCATIONS APPROXIMATE AND PLACED ON THIS FIGURE BY ALIGNING COMMON FEATURES FROM THE SOURCES LISTED IN NOTES 1 AND 2.

TIDAL WETLANDS



Lafayette Street Open Space

Rotary Park
City of Cape May,
Cape May County, NJ

JERSEY CENTRAL POWER & LIGHT COMPANY
 CAPE MAY FORMER MANUFACTURED GAS PLANT SITE
 CAPE MAY, NEW JERSEY
REMEDIAL ACTION WORK PLAN - MARCH 2011

**CITY OF CAPE MAY DEVELOPMENT
 PLANS IN VICINITY OF
 FORMER MGP SITE**

ARCADIS

FIGURE
A