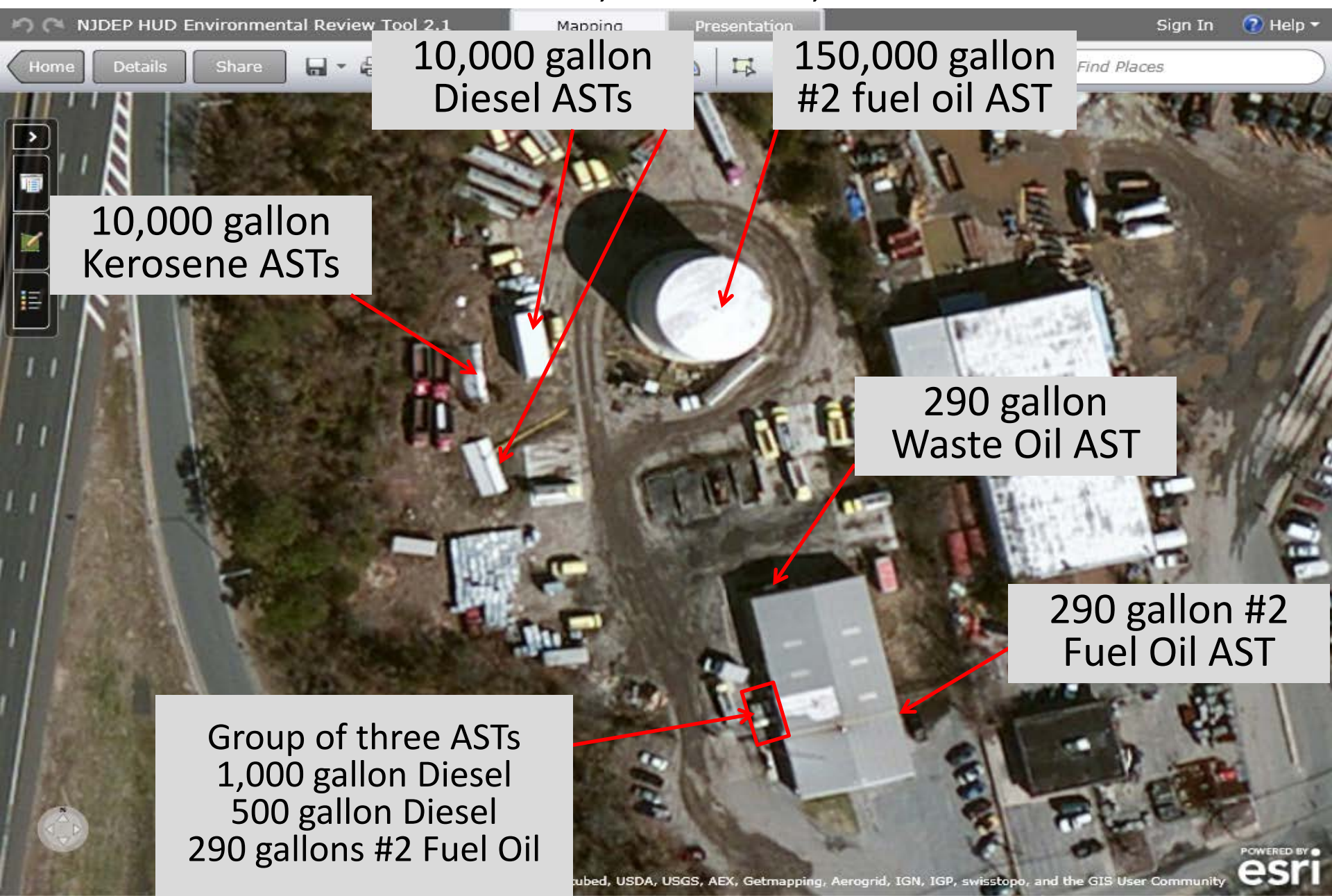


1530\_12\_38 – Dover Oil Company  
239 Dover Rd, Toms River, NJ 08757

Site visit 2/20/2014



10,000 gallon  
Diesel ASTs

150,000 gallon  
#2 fuel oil AST

10,000 gallon  
Kerosene ASTs

290 gallon  
Waste Oil AST

290 gallon #2  
Fuel Oil AST

Group of three ASTs  
1,000 gallon Diesel  
500 gallon Diesel  
290 gallons #2 Fuel Oil

- 150,000 gallon steel tank with secondary containment.
- Three 10,000 gallon tanks are steel tanks with secondary containment.
- Three 290 gallon tanks are double walled steel tanks.
- 1,000 gallon tank is a double walled steel tank.
- 500 gallon tank is a steel tank with secondary containment.