

NJDEP HUD Environmental Review Tool

New Jersey Dept of Environmental Protection - HUD Environmental Review Tool
Prime Farmland Soils

Application ID#:

RRE0018837MF

PAMS PIN:

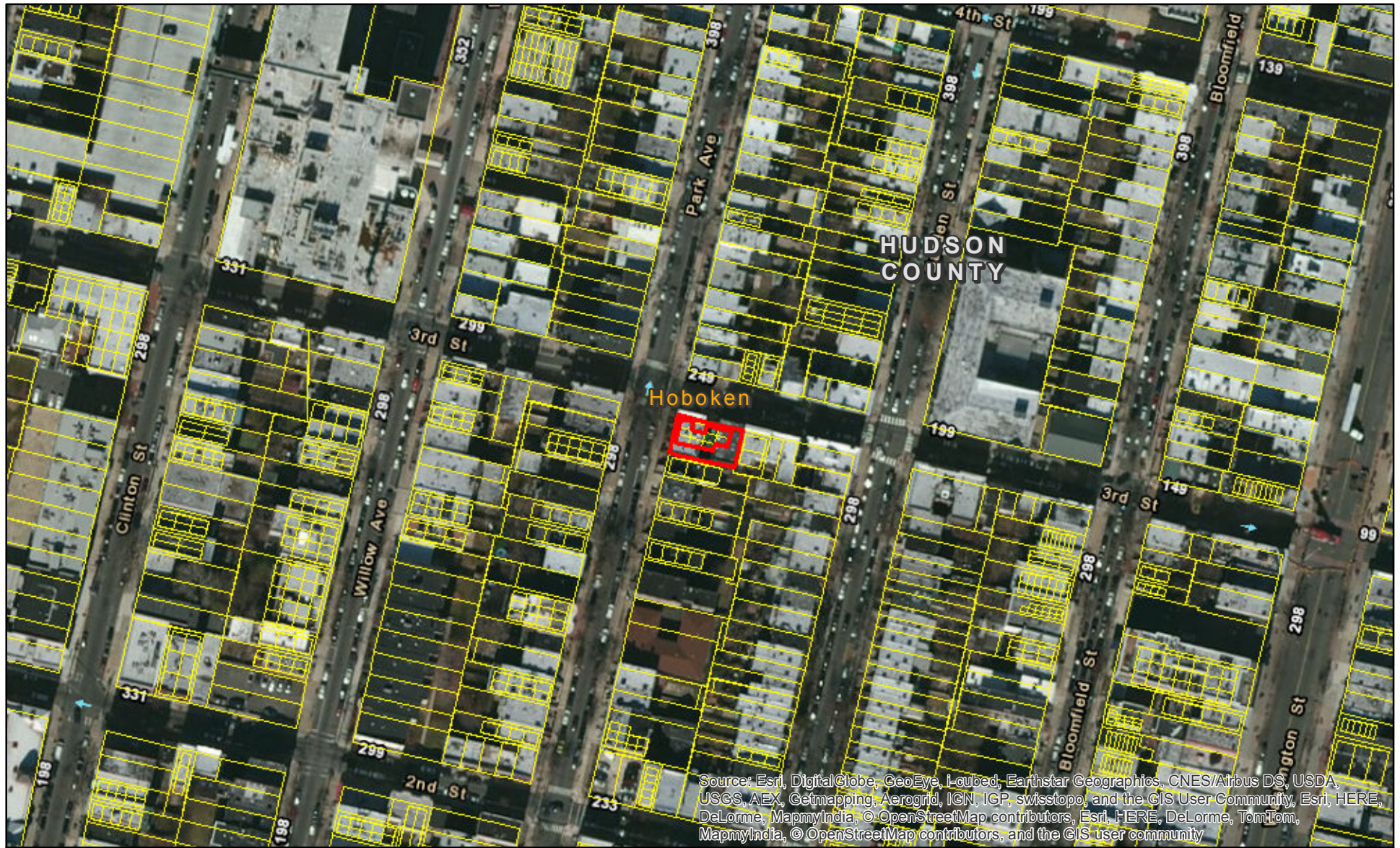
0905_178_12.1_C001B



Address:




235 Park Ave, Apt 1B

Municipality:

Hoboken City



 Proposed Action Site
 HUD Review Parcels

 All areas are prime farmland
 Farmland of statewide importance
 Farmland of unique importance

1:2,400

1 inch = 200 feet

0 200 400 Feet

