

NJDEP HUD Environmental Review Tool

New Jersey Dept of Environmental Protection - HUD Environmental Review Tool
Coastal Zone Management Act Map

Application ID#:

RRE0027856MF

PAMS PIN:

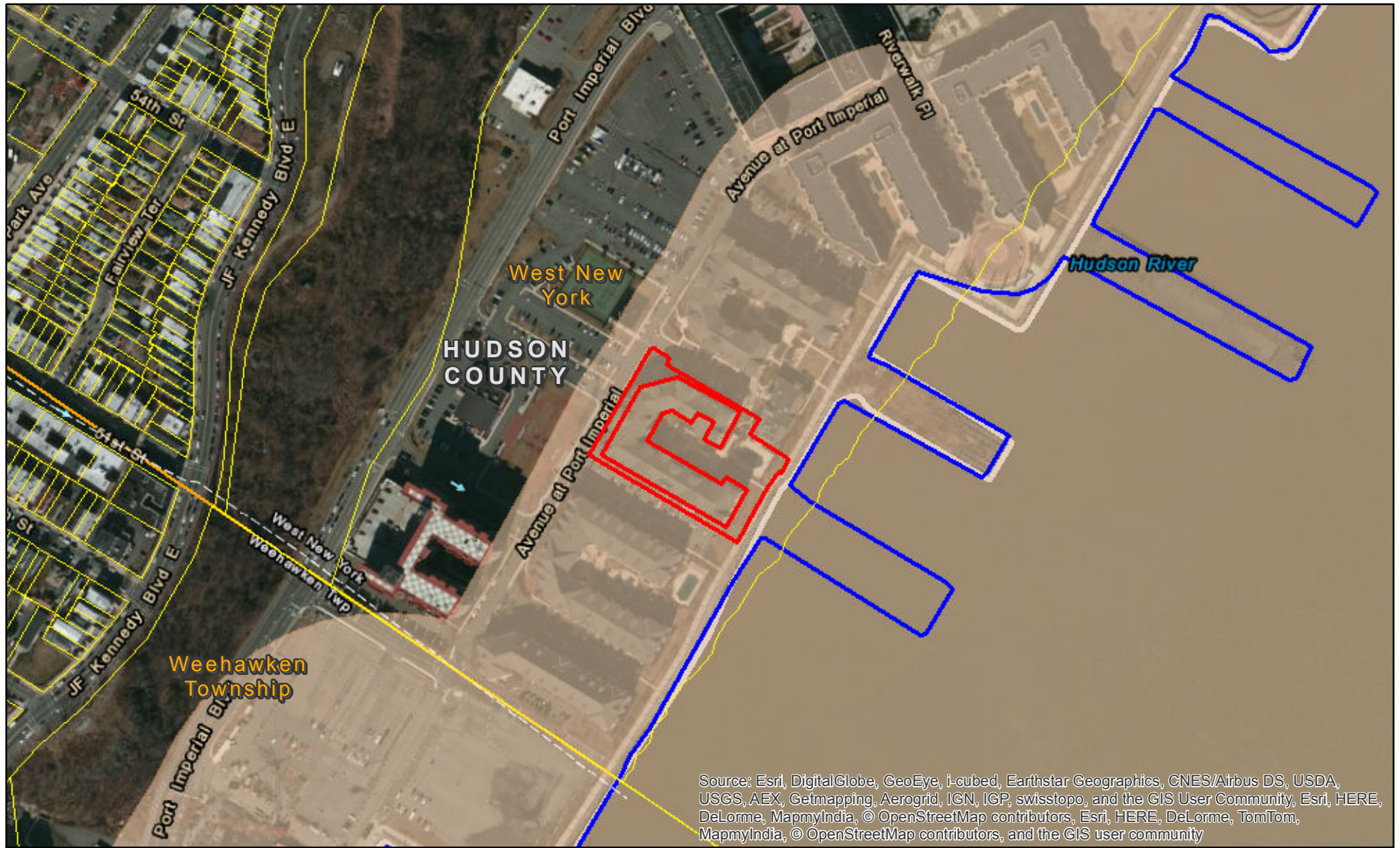
0912_168.01_8.03

Address:

26 Ave At Port Imperial, Apt B37

Municipality:

West New York Town



Source: Esri, DigitalGlobe, GeoEye, i-cubed, Earthstar Geographics, CNES/Airbus DS, USDA, USGS, AEX, Getmapping, Aerogrid, IGN, IGP, swisstopo, and the GIS User Community, Esri, HERE, DeLorme, MapmyIndia, © OpenStreetMap contributors, Esri, HERE, DeLorme, TomTom, MapmyIndia, © OpenStreetMap contributors, and the GIS user community

Proposed Action Site

Mean High Water Line

Hackensack Meadowlands

HUD Review Parcels

Mean High Water Line Buffer Zone (150 ft)

CAFRA Zone

Upland Waterfront Development Zone

1:4,800

1 inch = 400 feet

