

NJDEP HUD Environmental Review Tool

New Jersey Dept of Environmental Protection - HUD Environmental Review Tool
Floodplain Management - FEMA Preliminary FIRM

Application ID#:

RRE0032126MF

PAMS PIN:

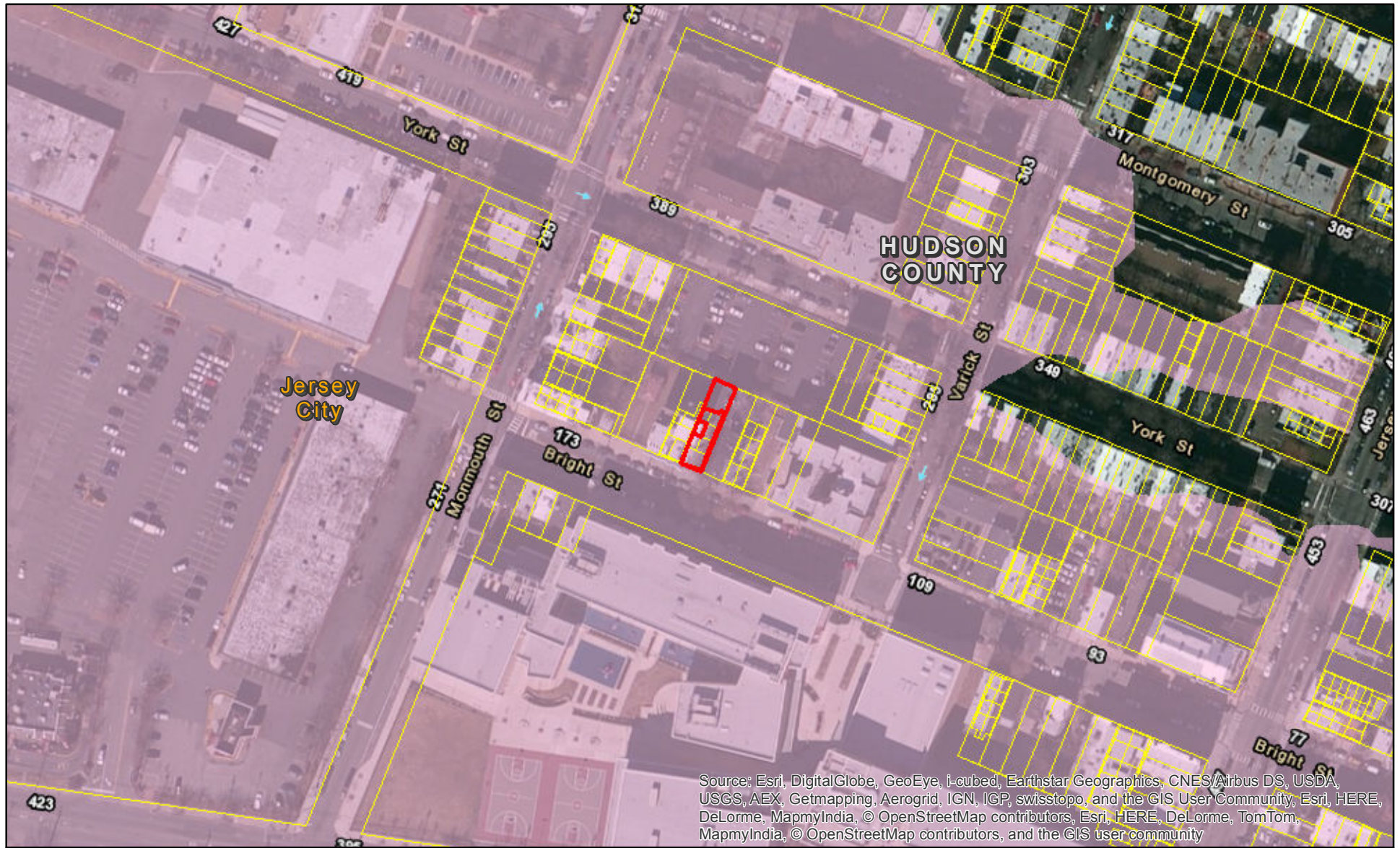
0906_342_25.103_C0103

Address:





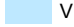
126 Bright St, Apt 103

Municipality:

Jersey City



Source: Esri, DigitalGlobe, GeoEye, i-cubed, Earthstar Geographics, CNES/Airbus DS, USDA, USGS, AEX, Getmapping, Aerogrid, IGN, IGP, swisstopo, and the GIS User Community, Esri, HERE, DeLorme, MapmyIndia, © OpenStreetMap contributors, Esri, HERE, DeLorme, TomTom, MapmyIndia, © OpenStreetMap contributors, and the GIS user community

- | | |
|--|---|
|  Proposed Action Site | FEMA Preliminary FIRMs |
|  HUD Review Parcels |  A |
|  Floodways |  V |

