

# NJDEP HUD Environmental Review Tool

New Jersey Dept of Environmental Protection - HUD Environmental Review Tool  
 Prime Farmland Soils

Application ID#:

SBL39430

PAMS PIN:

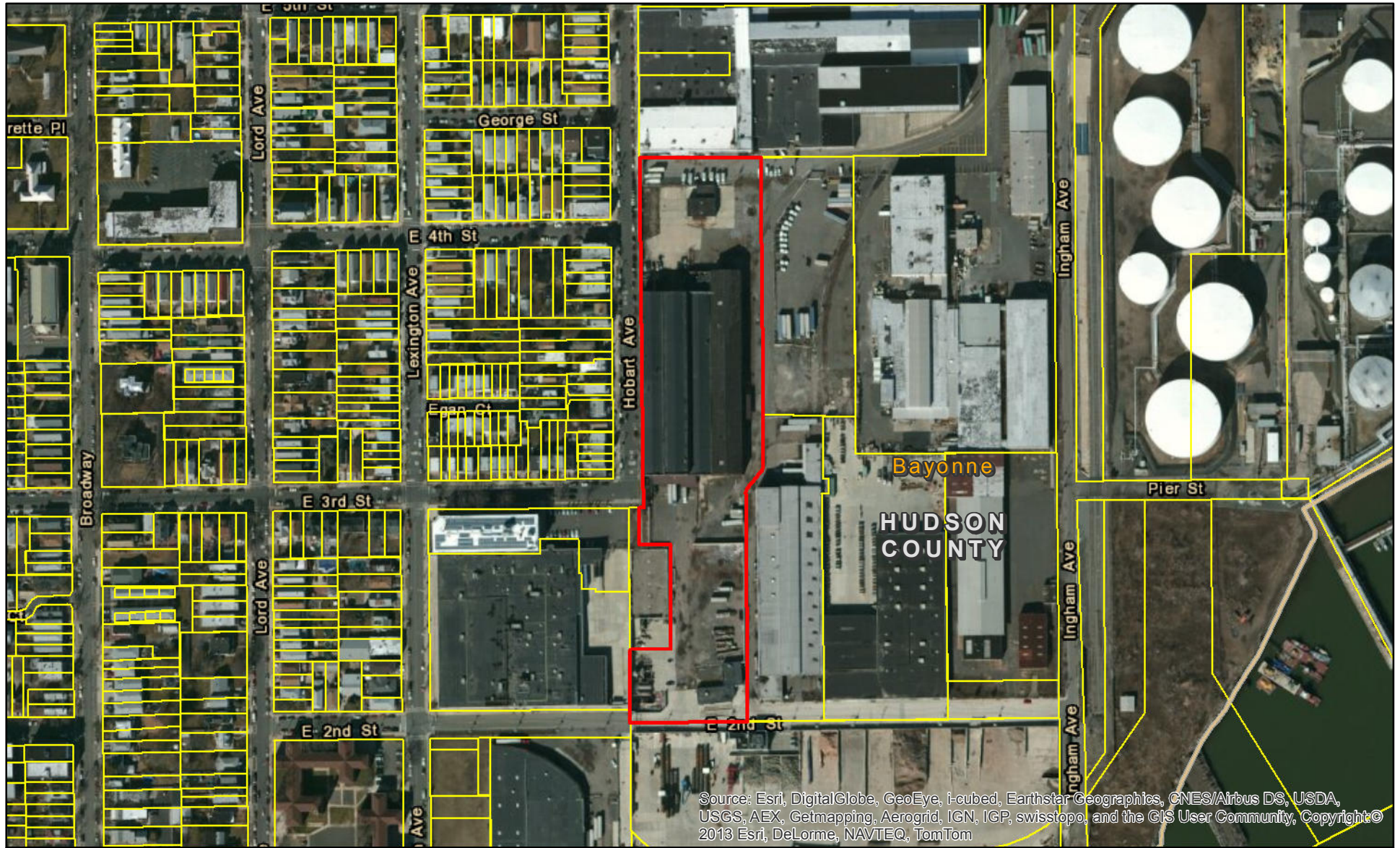
0901\_359\_10

Address:

70-86 Hobart Street

Municipality:

Bayonne City



Source: Esri, DigitalGlobe, GeoEye, i-cubed, Earthstar Geographics, CNES/Airbus DS, USDA, USGS, AEX, Getmapping, Aerogrid, IGN, IGP, swisstopo, and the GIS User Community, Copyright © 2013 Esri, DeLorme, NAVTEQ, TomTom

- Proposed Action Site
- HUD Review Parcels
- All areas are prime farmland
- Farmland of statewide importance
- Farmland of unique importance

1:4,800

1 inch = 400 feet

