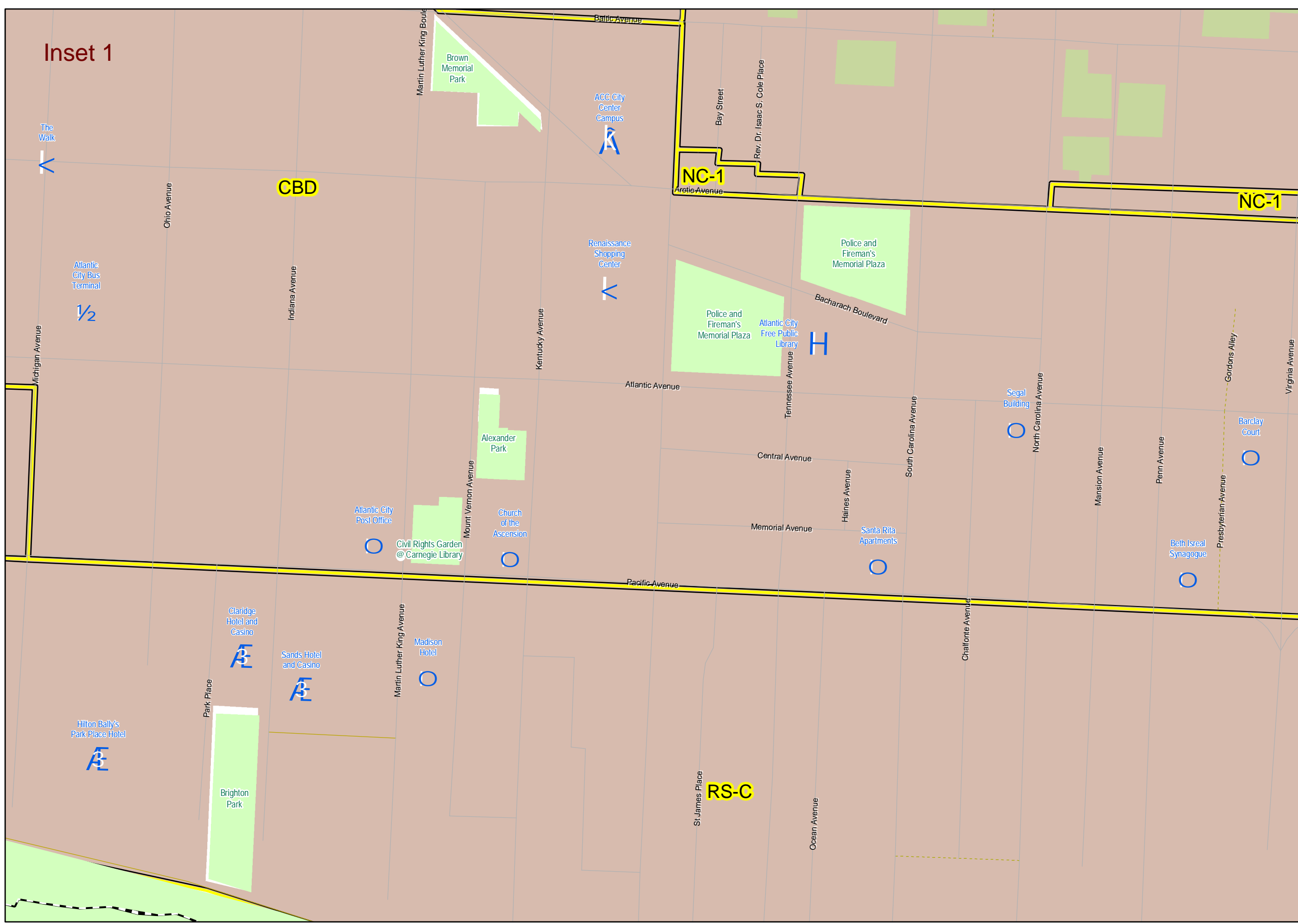


# Atlantic City Municipal Zoning Boundaries Atlantic County, NJ



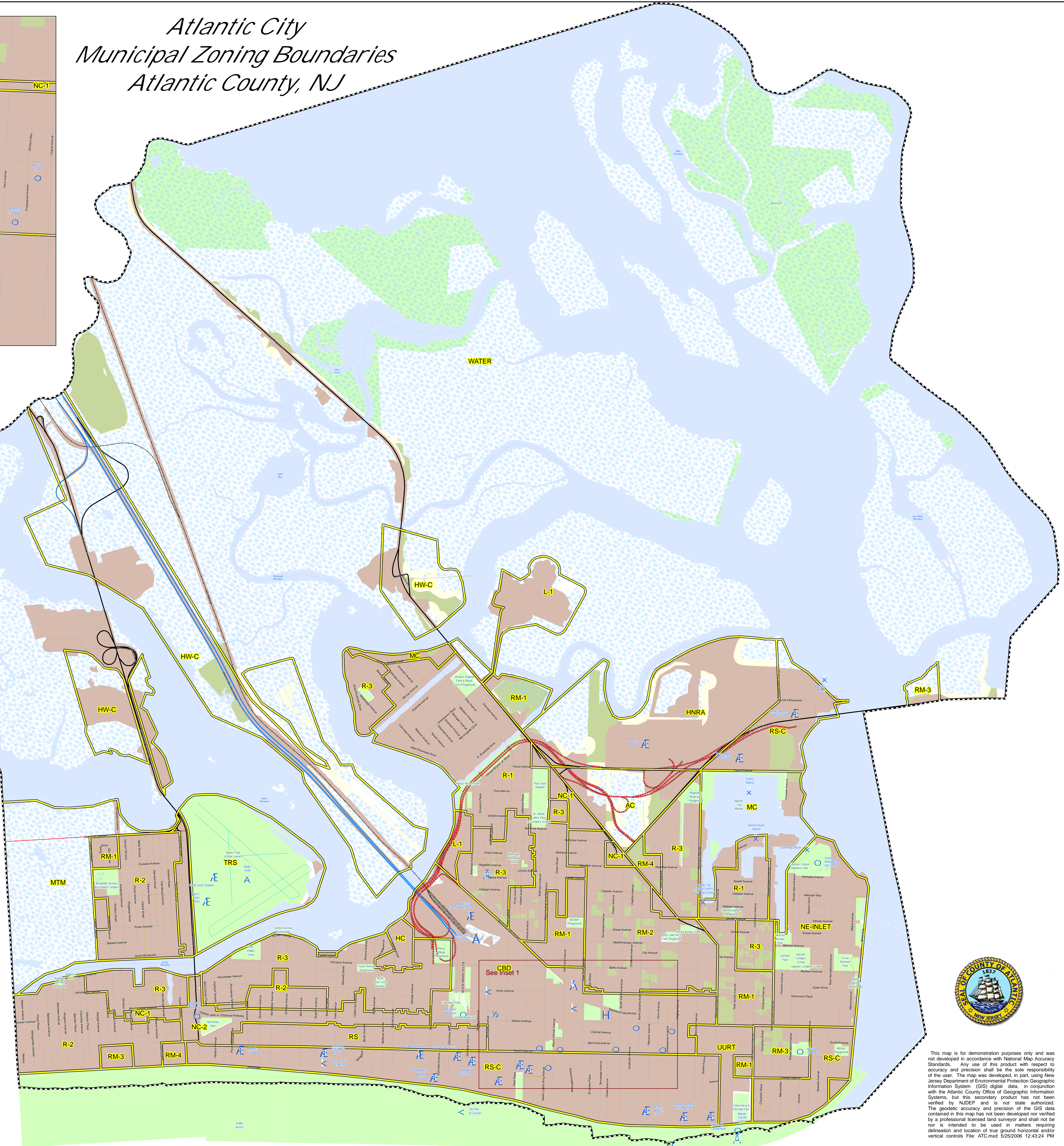
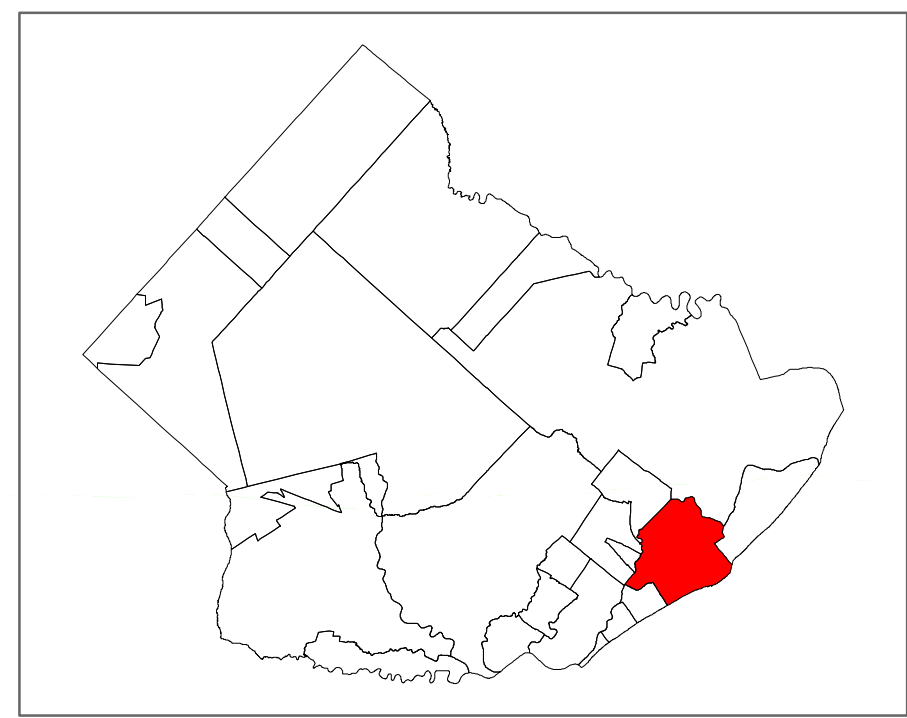
Zone Description Key

Zone	Zone Description	Base Lot Size	Min Lot Size	Min Density	Max Density
AC	Area Commercial	40,000 sf		0.00	0.00
CBD	Central Business District	10,000 sf		0.00	0.00
HC	Heavy Commercial	NA		0.00	0.00
HNRA	Huron North Redevelopment Area	NA		0.00	0.00
HW-C	Highway Commercial	NA		0.00	0.00
L-1	Light Industrial	NA		0.00	0.00
MC	Marine Commercial	6,000 sf		0.00	0.00
MTM	Marine Tidal Marsh	NA		0.00	0.00
NC-1	Neighborhood Commercial - 1	3,000 sf		0.00	0.00
NC-2	Neighborhood Commercial - 2	NA		0.00	0.00
NE-INLET	Northeast Inlet Renewal Area	NA		0.00	0.00
R-1	Single-Family Detached	4,500 sf		9.68	9.68
R-2	Single-Family Detached	3,000 sf		14.52	14.52
R-3	Single-Family Attached (townhouse)	3,000 sf		24.20	24.20
RM-1	Multi-Family Walk-up	20,000 sf		28.00	28.00
RM-2	Multi-Family Low-rise	3,200 sf		45.00	45.00
RM-3	Multi-Family Medium-Rise Apartments	20,000 sf		60.00	60.00
RM-4	Multi-Family High-rise	NA		0.00	0.00
RM-C	Multi-Family High-rise Commercial	30,000 sf		0.00	0.00
RS	Resort Service	20,000 sf		0.00	0.00
RS-C	Resort Commercial Development	NA		0.00	0.00
TRS	Transportation (Bader Field)	NA		0.00	0.00
UURT	Urban Renewal Tract	NA		0.00	0.00
WATER	Water	NA		0.00	0.00

The 2006 zoning updates reflect zoning changes as per revision date on the zoning map received from each municipality. Atlantic City, NJ zoning updates were received for this municipality.

0 0.10 0.1  
Miles

- Legend**
- Municipal Boundary
  - Zoning Boundary
  - Developed Land
  - Unconstrained Land
  - Maximum Wetlands Buffer
  - Open Space
  - Wetlands
  - Water
  - Streams
  - Academic Center
  - Airport
  - Bus Terminal
  - Casino
  - Library
  - Marina
  - Museum
  - Points of Interest
  - Shopping Center
  - Sporting/Convention Complex
  - Train Station



This map is for demonstration purposes only and was not developed in accordance with National Map Accuracy Standards. Any use of this product with respect to accuracy and precision shall be the sole responsibility of the user. The map was developed, in part, using New Jersey Department of Environmental Protection Geographic Information System (GIS) digital data, in conjunction with the Atlantic County Office of Geographic Information Systems, but this secondary product has not been verified by NJDEP and is not state authorized. The geospatial accuracy and precision of the GIS data contained in this map has not been developed nor verified by a professional licensed land surveyor and shall not be used in matters requiring precise location and location of true ground horizontal and vertical controls. File: ATC.mxd 5/25/2008 12:43:24 PM