

Celebrating Past, Present & Future



2014 NJ History and Historic Preservation CONFERENCE

June 4–5, 2014 | www.njpreservationconference.org

BROOKDALE COMMUNITY COLLEGE | LINCROFT

2014 NJ History and Historic Preservation Conference Has Gone Mobile!

Dear Attendees,

The 2014 NJ History and Historic Preservation Conference has gone mobile using Guidebook!

We strongly encourage you to download our mobile guide to enhance your experience at the 2014 NJ History and Historic Preservation Conference. You'll be able to plan your day with a personalized schedule and browse exhibitors, maps and general show info.

The app is compatible with iPhones, iPads, iPod Touches and Android devices. Windows Phone 7 and Blackberry users can access the same information via our mobile site at m.guidebook.com.

To get the guide, choose one of the methods below:

- Scan the image below with your mobile phone (QR-Code reader required, e.g. 'Red Laser', 'Barcode Scanner')
- Download 'Guidebook' from the Apple App Store or the Android Marketplace
- Visit <http://guidebook.com/getit> from your phone's browser

The guide will be listed under the "Download Guides" section of the application.



Follow the Conference on Twitter for up to the minute information before and during the event!

@NJHistPresConf

Enjoy the Conference!

2014 NJ History and
Historic Preservation Conference
Planning Committee

**Thanks to
HMR Architects,
the 2014 Conference
App Sponsor**



Welcome to the 2014 New Jersey History and Historic Preservation Conference at Brookdale Community College!

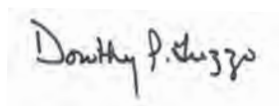
Celebrating Past, Present & Future

is the theme of this year's conference during New Jersey's 350th Anniversary year. It provides us with an opportunity to celebrate past accomplishments while continuing to learn about the current practices of history and historic preservation. Plenary speakers author Dr. Ned Kaufman and museum consultant John Durel will help conference attendees to envision future goals for making historic preservation and history relevant in the 21st century.

Special educational tracks this year address the challenges and achievements of Hurricane Sandy recovery and the opportunities to create effective heritage tourism programs throughout the state. Uniquely-designed field workshops will bring attendees directly to Shore communities affected by the storm and explore 20th century landmarks that few have seen up close—Camp Evans military site and Bell Labs Headquarters. Additional offerings will engage planners, preservationists, museum managers, historic preservation commissioners, and more.

During the day please visit with the sponsors and vendors in the Marketplace exhibit area. The sponsors' financial support for the History and Historic Preservation Conference is vital in making this a self-supporting event.

Best wishes for a successful conference!



**Dorothy P.
Guzzo**

*Executive Director
NJ Historic Trust*



Meme Omogbai

*Chair
NJ Historic Trust
Board of Trustees*

Conference Agenda

TIME	ACTIVITY	LOCATION
8:00 to 9:00 am	Conference Registration Breakfast <i>Marketplace Exhibits Open</i>	<i>Brookdale Recreation Center</i>
9:00 to 10:15 am	Welcome and Opening Plenary Welcome: Monmouth County Freeholder Director Lillian G. Burry Plenary Speaker: Dr. Ned Kaufman	<i>Warner Student Life Center Navesink Room</i>
10:45 am to noon	Choice of Educational Sessions:	
	S-1 Preserving Historic Integrity in a Post-Sandy World	<i>Student Life Center—Twin Lights I</i>
	S-2 Economic Impact of Heritage Tourism in New Jersey	<i>Student Life Center—Navesink I</i>
	S-3 A Legislative Legacy to Commemorate New Jersey's 350th Anniversary	<i>Student Life Center—Navesink III</i>
	S-4 Preservation through Noncontiguous Cluster Zoning A New and Improved Tool for the Kit	<i>Student Life Center—Fort Hancock</i>
	S-5 Discovering and Sharing Monmouth's Rich and Varied History	<i>Student Life Center— Monmouth Battlefield</i>
	S-6 All Roads lead to New Jersey: Teaching US History through the Garden State	<i>Student Life Center—Twin Lights II</i>
	S-7 Regarding Modern New Jersey: A Selection of Docomomo Presentations	<i>Student Life Center—Atlantic</i>
noon to 1:30 pm	Lunch <i>Marketplace Exhibits Open</i> <i>Book Signing by Ned Kaufman</i>	<i>Brookdale Recreation Center</i>
	Choice of Afternoon Workshops	
1:00 to 4:15 pm	W-1 Post Sandy Tour of Monmouth County Shore Towns (<i>bus/walking tour</i>)	<i>Meet bus outside Brookdale Recreation Center at 1:00 pm</i>
1:00 to 4:15 pm	W-2 Camp Evans: Revealing the History and Preservation of a Military Research Site (<i>bus/walking tour</i>)	<i>Meet bus outside Brookdale Recreation Center at 1:00 pm</i>
1:00 to 4:15 pm	W-3 Bell Laboratories: A Rare Walk Into Its Past and Glimpse Into Its Future (<i>bus/walking tour</i>)	<i>Meet bus outside Brookdale Recreation Center at 1:00 pm</i>
1:30 to 4:15 pm	W-4 Tales of Sandy Recovery; Archaeology on the Land and in the Water (<i>classroom</i>)	<i>Student Life Center—Twin Lights I</i>
1:00 to 4:15 pm	W-5 Preserving Historic Buildings through Recording: Hands-on Workshop (<i>walking tour</i>)	<i>Meet guide outside Brookdale Recreation Center at 1:00 pm for walk or drive to workshop location at Thompson Park</i>

TIME	ACTIVITY	LOCATION
1:30 to 2:45 pm	Choice of Educational Session	
	S-8 What does it mean to be "Visitor Ready?" Advice for Volunteer-Based Organizations	<i>Student Life Center—Fort Hancock</i>
	S-9 Best Practices for Historic Preservation Commissions	<i>Student Life Center—Navesink III</i>
	S-10 Climate Change, Disaster Planning and Cultural Landscapes	<i>Student Life Center—Navesink I</i>
	S-11 CAPES at 25: The Intersection of Archival and Historic Preservation	<i>Student Life Center—Twin Lights II</i>
1:30 to 2:45 pm	Choice of Educational Session	
	S-12 Making the Connections in Heritage Tourism	<i>Student Life Center—Navesink I</i>
	S-13 Redefining Historic Sustainability in the Largest Historic District in the State	<i>Student Life Center—Twin Lights II</i>
	S-14 Lighting for Historic Buildings: Design and Technology	<i>Student Life Center—Navesink III</i>
	S-15 Is Collecting a Thing of the Past?	<i>Student Life Center—Fort Hancock</i>
4:30 to 5:15 pm	Closing Plenary Speaker: Jophn Durel	<i>Student Life Center—Navesink Room</i>
5:30 to 7:00 pm	Reception	<i>Student Life Center—Lounge</i>

Please respect that Brookdale Community College promotes and enforces a tobacco-free environment. Use of tobacco products is prohibited anywhere on campus, except in private vehicles.

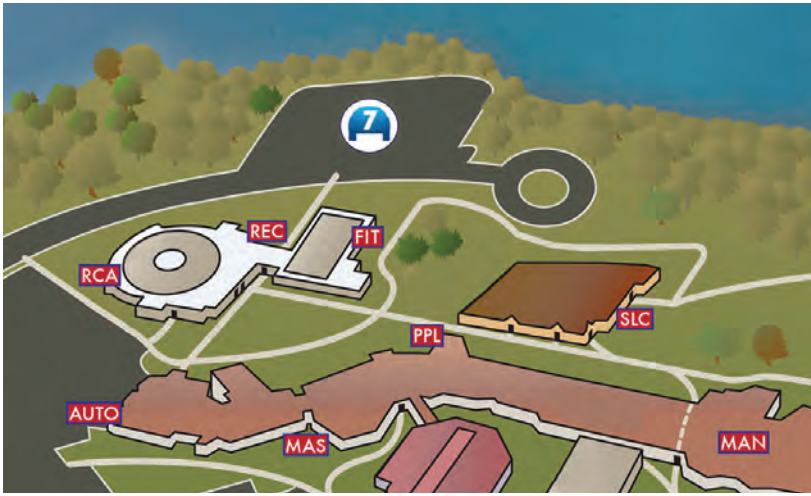
Conference Hosts



COMMON WEALTH
of New Jersey



CELEBRATING PAST, PRESENT & FUTURE
Brookdale Community College | Lincroft Campus



Getting Around

LOT 7—Parking

Bus pick up for afternoon field workshops

REC—Brookdale Recreation Center

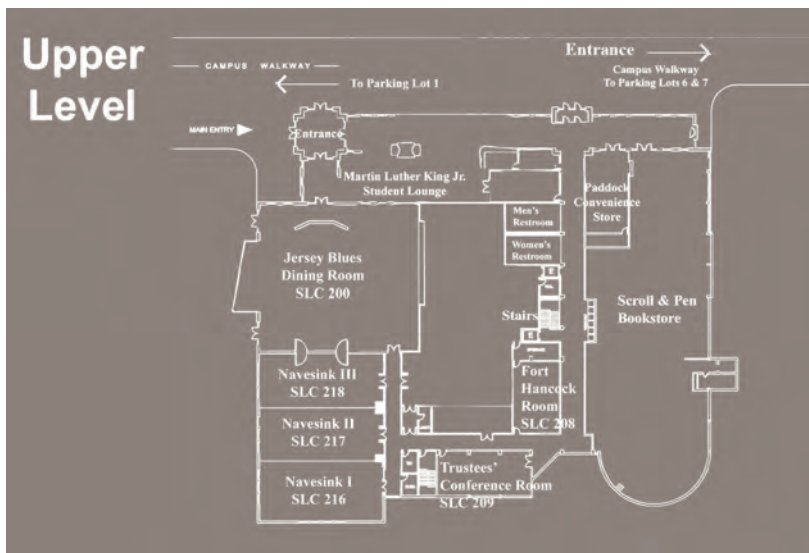
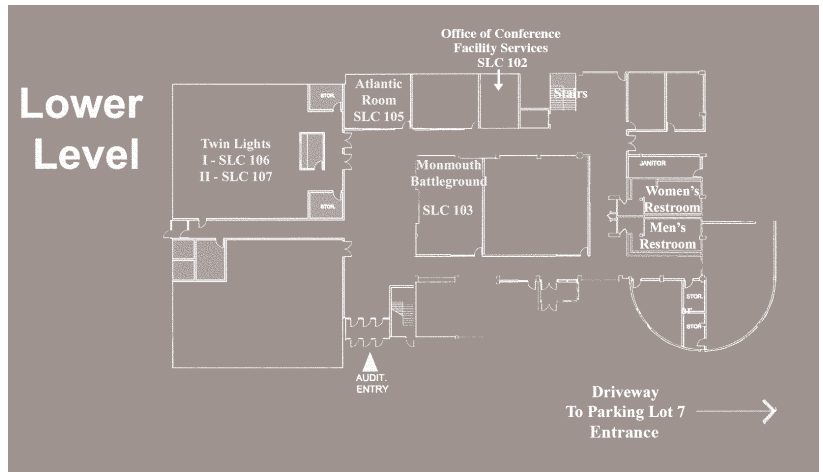
Registration, lunch, Marketplace exhibits

SLC —Student Life Center

All classroom educational sessions

Student Life Center Lower Level

Classroom sessions in Twin Lights I and II, Atlantic and Monmouth Battleground rooms



Student Life Center Upper Level

Opening and Closing Plenary session in Navesink room;
Classroom sessions in Navesink I and III and Fort Hancock rooms;
Closing Reception in Student Lounge

CELEBRATING PAST, PRESENT & FUTURE

Featured Speakers



Ned Kaufman, Ph.D., is an independent practice offering a wide range of professional services in heritage conservation. Based in New York City since 2001, the firm specializes in projects involving innovative interpretation, program design, research, and policy development with an emphasis on community character, social equity, and sense of place. While retaining the advantages of a small practice, Ned Kaufman is able to manage large multidisciplinary projects by forming project-based partnerships and retaining sub-consultants. Clients include government agencies and neighborhood non-profits, advocacy groups and foundations, law firms and corporations, architects and designers, land trusts and community centers.

From 1989 through 2000, Ned Kaufman served as director of historic preservation for the Municipal Art Society of New York. In 1998, he founded Place Matters, a non-profit program to discover and protect places that matter to New York's diverse communities. Before coming to the Municipal Art Society, he taught architectural history at the University of Chicago and Columbia University's Historic Preservation program, and served as a guest curator for the inaugural exhibition of Montreal's Canadian Centre for Architecture. He earned his doctorate at Yale University.

In addition to his consulting work, Dr. Kaufman serves as Adjunct Associate Professor in Pratt Institute's Graduate Program in Historic Preservation, which he helped establish in 2003, and as Director of Research and Training Programs at Rafael Vinoly Architects. His essays on heritage and place have been widely published, and Dr. Kaufman is a regular lecturer around the country, as well as in Argentina, Canada, and the U.K.



John Durel is a consultant to museums and cultural organizations nationwide, helping leaders with executive coaching, strategic planning, business planning, and board and staff development. He also serves as the Coordinator of the Seminar for Historical Administration, a leadership development program for emerging leaders in history organizations. Dr. Durel is especially interested in the practice of leadership in museums, and each year works closely with more than thirty museum directors as they strive to advance their organizations. His recent published works include Building a Sustainable Nonprofit Organization, (American Association of Museums, 2010), "Entrepreneurship in Historical Organizations," (History News, 2009), "Curiosity and Discipline: Reflections on the Words of Jim Collins, (Hand to Hand, 2008), and "A Golden Age for Historic Properties," written with Anita N. Durel, CFRE (History News, 2007.) He received a B.S. in mathematics from the University of Notre Dame, and a Ph.D. in American History from the University of New Hampshire. Johns Hopkins

Qm² is a community of consultants. Our shared mission is to help nonprofit organizations, particularly museums and cultural groups, build successful futures by implementing powerful concepts of learning, leadership, management, and design.

Although we each operate our own business, we share values, our talents are complementary, and we care for and support one another.

John Durel combines practical experience from more than thirty years in museums and cultural organizations, with a keen understanding of how people and organizations function. He has assisted hundreds of nonprofit leaders in developing and executing realistic plans for building highly valued and financially sustainable organizations

CELEBRATING PAST, PRESENT & FUTURE

Advocates Opening Reception

Last night June 4, 2014, the Advocates for New Jersey History hosted an Opening Reception to the History and Historic Preservation Conference at Historic Thompson Park. The event celebrated New Jersey's 350th Anniversary and acknowledged key accomplishments of the history and preservation communities that have improved the lives of state residents in the last 45 years.

The reception's featured speaker was Mark Di Ionno, column writer for the Newark Star-Ledger and life-long history enthusiast. However at this event, Mr. Di Ionno explored the future, suggesting what the state of the State's historic preservation movement would be at New Jersey's 400th Anniversary.

Next, the Advocates recognized the National Historic Preservation Act of 1966 as a piece of landmark legislation intended to preserve historical and archaeological sites in the United States. The Act created the National Register of Historic Places, the list of National Historic Landmarks, and the State Historic Preservation Offices. In New Jersey three state entities and a statewide non-profit were created as a result of the National Historic Preservation Act.

At the reception, the Advocates chose to acknowledge the establishment of these four entities and enumerate their accomplishments:

- The New Jersey Historical Commission enriches the lives of the public by preserving the historical record and advancing interest in and awareness of New Jersey's past.
- The New Jersey Historic Trust advances historic preservation in New Jersey for the benefit of future generations through education, stewardship and financial investment programs that save our heritage and strengthen our communities.
- The New Jersey Historic Sites Council reviews proposed "encroachments" at open public meetings, and makes a recommendation to the Commissioner of the Department of Environmental Protection for final action. The Historic Preservation Office acts as staff to the Historic Sites Council.
- The League of Historical Societies of New Jersey promotes and furthers the improvement, interpretation, and preservation of our historical heritage in New Jersey.

The Advocates for New Jersey History seeks to build awareness of public history activities in the state, to increase support for high quality responsive and professional state and private agencies engaged in public history, to advocate for public support of historical agencies, and to serve public history and history education, heritage tourism, and historic preservation.

Reception Sponsors



Monmouth
County
Historical
Association



KEYNOTE SPEAKER

Mark Di Ionno, *The Star-Ledger*



Mark Di Ionno is a lifetime newspaperman and a 2013 Pulitzer Prize finalist in news commentary, primarily for his work on Hurricane Sandy. He is also a four-time winner of the New Jersey Press Association's first-place award for column writing. His columns appear regularly in *The Star-Ledger*, and its online partner, nj.com.

Di Ionno is the author of three award-winning nonfiction books that include *New Jersey's Coastal Heritage*, and *A Guide to New Jersey's Revolutionary War Trail* which received the New Jersey Academic Alliance Award. *Backroads, New Jersey*

was named among the most notable New Jersey books (1995–2005) by the New Jersey Center for the Book.

Di Ionno's first novel and most recent publication is *The Last Newspaperman*, which along with the Revolutionary War book, was placed on NJ 350's "101 Greatest New Jersey Books."

CELEBRATING PAST, PRESENT & FUTURE 2014 Planning Committee

Judith F. Adams, AICP, NJ Historic Trust

Janice Armstrong, Preservation Consultant

Michael Calafati, AIA, LEED AP,
Michael Calafati Architect, LLC

Glenn Ceponis, NJ Historic Trust

Sara R. Cureton, NJ Historical Commission &
NJ Cultural Trust

Erin Dougherty, Historical Society of Princeton

Bonnie N. Flynn, AICP PP, Stafford Township

Lauren Giannullo, NJ Historic Trust

Lisa Ginther, MBI GluckShaw

Catherine Goulet, NJ Historic Trust

Ilene Grossman-Bailey, Ph.D., RPA,
Richard Grubb & Associates, Inc.

Dorothy P. Guzzo, NJ Historic Trust

Timothy G. Hart, Ocean County Cultural and
Heritage Commission

Dorothy Hartman, *History in the Making*

Margaret M. Hickey, R.A., Connolly & Hickey
Historical Architects

Vivian James, *Museum of Early Trades
and Crafts*

Deborah Marquis Kelly, *Preservation Partners*

Kathleen John-Alder, ASLA,
Rutgers University

Cate Litvack, *Advocates for New Jersey History*

Evelyn C. Murphy, Ph.D., Monmouth County
Historical Association

William Neumann,
William Neumann Photography

Niquole Primiani, NJ Historical Commission

Dan Saunders, NJ—Historic Preservation Office

Andrea Tingey, NJ—Historic Preservation Office

Katy Weidel, FASLA, LLA,
New Jersey Meadowlands Commission

CELEBRATING PAST, PRESENT & FUTURE

2014 HPO Preservation Awards



Each May during National Historic Preservation Month, the Historic Preservation Office and Historic Sites Council recognize outstanding people, projects and publications that celebrate New Jersey's rich history. Read more about this year's award recipients on the HPO web site: www.nj.gov/dep/hpo/4sustain/awdsprogram.htm

Individuals, Organizations, and Agencies

Phyllis Catanoso, *left* | North Wildwood Preservation Advocates | Cape May County |

The driving force behind the reconstruction of the Historical Hereford Inlet Lighthouse, her efforts began in 1963 and culminated with the completion of the 4th and final phase in 2011.

James Van Zandt Mansion, *left* | 1010 Route 601 | Skillman, Somerset County | OWNER:

SAVE—A Friend to Homeless Animals | PROJECT TEAM | Piper Burrows, Cheryl and Bradford Mills, John Sayer, Roberta Ellsworth and the staff and Board of SAVE—A Friend to the Homeless Animal | Donald Twomey of Twomey Builders | Charles Donohue of Charles Donohue Construction | Lori Savron, Joseph Palmer, Gail Smith, and the support staff of Montgomery Township Planning, Zoning, Engineering, Health and Administrative offices | Max Hayden of Maximillian Hayden Architect, Inc.



Projects

Lawnside School, *below left* | 23 North Warwick Road | Borough of Lawnside, Camden County

| OWNER: Conifer Realty, LLC | PROJECT TEAM | Conifer Realty, LLC/*Developer*, Nicholas Cangelosi, Conifer Realty, LLC | Camden County Housing Association/*Non-Profit Partner*, Craig Knaup, Esq., Camden County Housing Association, Inc. | Borough of Lawnside/*Municipal Sponsor*, Mary Ann Wardlow, Mayor | Kitchen & Associates/*Architect* | Mary M. Johannesen, AIA, LEED AP, Principal-In-Charge | Keystone Preservation Group/*Historic Tax Credit Consultant* Shelby Weaver Splain, Keystone Preservation Group, Inc. | Conifer-LeChase/*General Contractor*, Brian Russo, *Operations Manager*

Petty's Run Archaeological Explorations and Site Preservation, *below center* | Capitol State

Park | City of Trenton, Mercer County | OWNER: State of New Jersey | PROJECT TEAM | Robert Martin, Commissioner, New Jersey Department of Environmental Protection | Brian Hughes, Mercer County Executive | Kathleen Crotty, Executive Director (retired), State Capitol Joint Management Commission | Pasquale Papero, Project Manager, Division of Property Management and Construction, New Jersey Department of the Treasury | Anthony Mazzella, Jr., Project Manager, Division of Property Management and Construction, New Jersey Department of the Treasury | Ed Mulvan, Project Manager, Division of Parks and Forestry, New Jersey Department of Environmental Protection | Al Payne, Project Manager (retired), Division of Parks and Forestry, New Jersey Department of Environmental Protection | Sally Lane, Project Manager, Division of





Parks and Forestry, New Jersey Department of Environmental Protection | Donna Lewis, Director, Planning Division, County of Mercer | Eric Tamulonis, Principal, Wallace Roberts & Todd, LLC | Janine Hildebrand, P.E., S. Harris Ltd. | Lahbib Chibani, Ph.D., P.E., President, Sadat Associates, Inc. | Richard W. Hunter, Ph.D., Principal, Hunter Research, Inc. | Ian Burrow, Ph.D., Principal, Hunter Research, Inc

Old Atlantic County Jail, top left | Mays Landing, Atlantic County | OWNER | Atlantic County | PROJECT TEAM | LWDMMR Architects, Alice Deupree, RA LEED AP BD+C, Project Manager; Peter Krenicki, RA, Project Architect | Atlantic County Facilities Management, Leslie MacDonnell, Assistant Chief of Administrative Services | Aliano Brothers General Contractors Inc. | Czar Engineering, Lamont Czar PE, Structural Engineer

Adaptive Reuse of the Ballantine Barn, top right | 1500 Littleton Road | Parsippany, Morris County | OWNER | GlaxoSmithKline | PROJECT TEAM | GlaxoSmithKline | Henderson Constructors | Eclectic Architecture, LLC | Restoration Technologies, Inc.

Port Colden United Methodist Church, top center | 64 Port Colden Road | Port Colden, Warren County | OWNER | Port Colden United Methodist Church Congregation | PROJECT TEAM | Port Colden United Methodist Church, Howard Huff; Trustee | *Architect:* Clarke Caton Hintz, John D.S. Hatch, AIA; Principal; Michael Hanrahan, AIA; Associate Partner/Project Manager | *General Contractor:* Phase 1—Scozzari Builders, Nicholas Scozzari, President; Phase 2—Charles Mann General Contracting, Charles Mann, President | *Structural Consultant:* Harrison Hamnett, PC, John Harrison, PE; Principal

GG Green, facing page, bottom right | 108 South Broad Street | Woodbury, Gloucester County | OWNER | RPM Development, LLC | PROJECT TEAM | *Developer:* RPM Development, LLC, Kevin Kavanaugh, VP of Development | *Architect:* Inglese Architecture and Engineering, John Inglese | *Environmental Consultant:* A.T. Cameron | *Historical Consultant:* Ulana Zakalak | City of Woodbury: Randi Woerner, Director, Economic Development

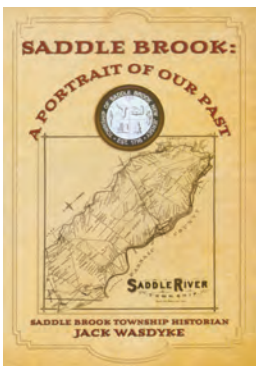
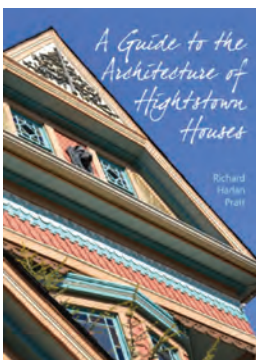
Preservation Documents

A Guide to the Architecture of Hightstown Houses, above left | *Author:* Richard Harlan Pratt, Hightstown, Mercer County | PROJECT TEAM | *Author and Photographer:* Richard Pratt | *Photographers:* Julie Ely and Doug Mariboe

Saddle Brook: A Portrait of Our Past, above left | *Author:* Jack Wasdyke, Saddle Brook, Bergen County | PROJECT TEAM | Jack Wasdyke

Innovations

Restoration of the Rocket Ice Yacht, left | 26 Union Street | Red Bank, Monmouth County | OWNER | North Shrewsbury Ice Boat & Yacht Club | PROJECT TEAM | John Holian, President of the Rocket Ice Yacht Foundation, *Vision, Project Leader, Fund Raising* | Frank Johnson, *Member & Faithful Work Party Support* | Jeff Morton, *Member & Faithful Work Party Support* | Mark Peterson, *Member & Epoxy and Finishing Work* | Bob Pulsch, *Member & Boat Builder, Plans, Drawings, Methods, and Leadership of Construction Activity*



Sponsors

Art Deco Level

AIA New Jersey

Beaux Arts Level

HMR Architects, PA

Neo Classical Level

Home Mortgage Finance Agency (HMFA)
Michael Calafati Architect, LLC
RPM Development, LLC

Gothic Level

Beyer Blinder Belle
Clarke Caton Hintz
Connolly & Hickey Historical Architects, LLC
Consigli Construction Co., Inc.
Crossroads of the American Revolution NHA
Dr. and Mrs. Joseph E. Salvatore
ESCA Special Clean
Hunter Research
Keller & Kirkpatrick, Inc.
Iwdmr & Associates, PC
MBI Gluckshaw
Mills & Schnoering Architects, LLC
Ms. Bonnie N. Flynn

MuseumRails
Richard Grubb & Associates
Wu & Associates

Italianate Level

Barnegat Bay Decoy & Baymen's Museum
Bregenzer Brothers, Inc.
Dewberry
Eclectic Architecture, LLC
Ford 3 Architects
Gladding, McBean
Heritage Consulting, Inc.
Historic Building Architects, LLC
Limeworks.us
Mary Delaney Krugman Associates, Inc.
Mercer Planning Association
Preservation Partners
Public History Partners
URS Corporation
William Neumann Photography
Zinno Construction

Georgian Level

History in the Making
Jan Hird Pokorny Architects, PC

Federal Sponsors

American Planning Association, NJ Chapter
Monmouth County Historical Association
Preservation New Jersey

Marketplace Exhibitors

Advocates for New Jersey History
American Planning Association, NJ Chapter
Barnegat Bay Decoy & Baymen's Museum
Bucks County College Historic Preservation Program
Christ Church Shrewsbury
Clark Caton Hintz
Crossroads of the American Revolution
Dewberry
Eclectic Architecture, LLC
ESCA Special Clean
Ford 3 Architects
Garden State Gardens
Gladding, McBean
History Press
HMR Architects, PA
Hunter Research
Kean University
Keller & Kirkpatrick, Inc.
Lamb Studios
LimeWorks.us
Materials Conservation Co. LLC
MBI Gluckshaw

Middletown Historic Preservation Commission
Monmouth County Historical Association
Mon-Ray, Inc.
Morris County Tourism Bureau
MuseumRails
New Jersey Department of Environmental Protection/
Historic Preservation Office
New Jersey Historic Trust
New Jersey Historical Commission
New Jersey State Archives
Preservation New Jersey
Pure History
Quill & Pen Bookstore
Richard Grubb & Associates
Thomas Fortune House Project
URS Corporation
Women's Heritage Trail
Wu & Associates
Your Town Apps LLC

Poster Presentation: "Promoting Student
Awareness of Preservation Resources"

Celebrating
Past, Present & Future



2014 NJ History and
Historic Preservation
CONFERENCE

SESSIONS

Morning Sessions

Opening Plenary | Connecting Our Shared Past in Preservation

Navesink Room

Within the context of New Jersey celebrating its 350th anniversary, **Dr. Ned Kaufman** will discuss the role that historic preservation has played in our society and challenge us to rethink the future of the movement. A variety of influences will shape how we approach issues to come—climate change, technological advancements, and heightened awareness of social impacts. Participants will be encouraged to think about preserving our heritage in a more global way that connects us with our shared past.

S-1 | Preserving Historic Integrity in a Post-Sandy World

Twin Lights I Room

Although historic integrity is an essential element of preservation practice, opinions vary as to how much damage destroys it, and how best to preserve it while retrofitting buildings to be more resilient. This panel will explore issues of integrity, mitigation and rehabilitation of historic buildings. Attendees will learn about the integrity criteria used by the National Park Service's National Register program, examining specific applications of these criteria and how they can vary. The question posed is whether historic preservation professionals need to seek greater consensus on what constitutes "sufficient integrity" in advance of disaster responses. Panelists will discuss the effects of elevating buildings—a major form of flood mitigation—and its design challenges to historic buildings. Finally, two speakers will present a case study of the historic Bay Head Yacht Club, which required rehabilitation after Superstorm Sandy, and discuss how a new elevation, retention and recreation of features, and historic context are reconciled.

MODERATOR

Mary Delaney Krugman, President and Principal Preservation Specialist of Mary Delaney Krugman Associates, Inc. (MDKA)

PRESENTERS

Bill Bolger, *National Park Service Northeast Regional manager for the National Historic Landmarks Program*

Brigitte Cook, *AIA, LEED AP, Platt Byard Dovell White Architects, LLP*

Linda Weber, *Program Director of the NJ Resiliency Network at the Sustainability Institute in The College of New Jersey*

Milton Lanier "Beau" Woodrum, Jr. *AIA, LEED AP, Platt Byard Dover White Architects, LLP*

S-2 | Economic Impact of Heritage Tourism in New Jersey

Navesink I Room

Heritage tourism accounts for 8% of New Jersey's income generated by overall tourism yet efforts to augment our historic destinations and make them even more profitable are lagging. This session will present the findings of two recently completed studies that document the impact that heritage travelers have on the national and statewide economy, with insight into what we can expect for the near future. Participants will learn hands-on application for how to incorporate statistical data into marketing and promotion, and how local organizations can use the state-wide heritage tourism Master Plan as a framework for their tourism efforts.

MODERATOR

Dorothy P. Guzzo, *Executive Director, NJ Historic Trust*

PRESENTERS

Regina Binder, *President, The Binder Group*

Laura Mandala, *Mandala Research*

Michael Mariano, *Sr Economist & Director of Geospatial Analytics, Oxford Economics*

S-3 | A Legislative Legacy to Commemorate New Jersey's 350th Anniversary

Navesink III Room

As we celebrate our state's 350th anniversary in 2014, we should aim to leave an influential legacy that will positively affect the fields of history and historic preservation into the future. This session will present four current legislative initiatives, discuss their potential impact, and suggest effective ways to realize their passage. The legislative pieces

Photos, facing page: Allentown Public Library (above); Count Basie Theatre, Red Bank (below).



are the Historic Property Reinvestment Act, sustainable funding for the Garden State Preservation Trust, Leasing Program of State Owned Historic Properties and restoring to 2005 levels the annual appropriations from the hotel and motel occupancy fee revenues that fund historical, arts, cultural, and tourism-related projects. Presenters will show successful examples from other states, including creating collaborative coalitions.

MODERATOR

Cate Litvack, *President, Advocates for New Jersey History*

PRESENTERS

- Jennifer Coffey**, *Policy Director, Stony Brook-Millstone Watershed Association*
- Lisa Ginther**, *Senior Associate, MBI-GluckShaw*
- John Hatch**, *AIA, Architect, Clarke Caton Hintz*
- Mark Texel**, *Director, Division of Parks and Forestry, NJ Department of Environmental Protection*

S-4 | Preservation through Noncontiguous Cluster Zoning: A New and Improved Tool for the Kit

Fort Hancock Room

In August 2013, the Governor signed a revision to the municipal land use law that improved local communities' ability to encourage the preservation of farmland, open space and historic sites by combining growth potential from two or more noncontiguous properties. While similar to the existing transfer of development rights, this new and improved tool simplifies the process and permanently protects designated parcels and historic sites through conservation and preservation easements. Through case studies, participants will learn how to implement this tool in their own communities and to protect properties in perpetuity with the use of deed restriction.

MODERATOR

Chris Sturm, *Senior Director of State Policy, New Jersey Future*

PRESENTERS

- James E. Hartling**, *Partner, Urban Partners*
- Courtenay Mercer**, *PP, AICP, Principal, Mercer Planning Associates*
- Robert Melvin**, *PP, AICP, Principal, Group Melvin Design*
- Glenn Ceponis**, *Principal Historic Preservation Specialist, New Jersey Historic Trust*



S-5 | Discovering and Sharing Monmouth's Rich and Varied History

Monmouth Battlefield Room

Some of Monmouth County's history leaders will introduce participants to the rich history of local communities, resources (both above and below ground), and collaborative efforts of private non-profits and municipalities to save regional treasures. The presentations will include discussions of early maritime history, the founding of a local historical museum and resources in the Middletown Village Historic District.

MODERATOR:

Randall Gabrielan, *Monmouth County Historian and Historical Commissioner*

PRESENTERS:

Paul Edelson, *President, Township of Ocean Historical Museum*

Richard Geffken, *Historian, Living History NJ*

Gerard P. Scharfenberger, *Ph.D., Archaeologist, Middletown Township*

S-6 | All Roads Lead to New Jersey: Teaching U.S. History through the Garden State

Twin Lights II Room

Participants will learn about two exciting curriculum development projects in New Jersey history that are planned to coordinate with the state's 350th anniversary, touch on broad themes of US History, and are tied to the Common Core Curriculum Standards. The "It Happened Here" series of digital episodes will be available on public television and online and offers resources for elementary and secondary level teachers to bring to the classroom. A compelling set of curriculum materials has been developed in coordination with the 350th anniversary that can be used by educators at museums or historic sites as well as for pre- or post-visit lessons for school groups. Panelists will explore how these new materials will help students connect with New Jersey's rich and exciting history well beyond this anniversary year.

MODERATOR

Erin Dougherty, *Executive Director, Historical Society of Princeton*

Andrew Clark, *Teacher of Social Studies, Bridgewater-Raritan High School*

Sara R. Cureton, *Director, New Jersey Historical Commission*

Arlene Gardner, *President, New Jersey Council for the Social Studies, Rutgers, The State University*

Michelle McDonald Ph.D., *Associate Professor of Historical Studies, Richard Stockton College*

S-7 | DOCOMOMO: Regarding Modern New Jersey

Atlantic Room

While New Jersey may be regarded as the Cradle of the Revolution, it also thrived during the era of Modernism. A range of nationally and internationally recognized architects contributed to the state's built environment and left a legacy of interesting projects and built works. With the help of interns from Rutgers University's Art History department who are working with DOCOMOMO (International Working Party for Documentation and Conservation of Buildings, Sites and Neighbourhoods of the Modern Movement), this session will present Modernism in Bergen County, Mies van der Rohe's Colonnade Apartments in Newark, and the coverage of Modern New Jersey in *Progressive Architecture* at mid-century.

MODERATOR

Meredith Arms Bzdak, *PhD, Partner, Mills + Schmoering Architects, LLC*

PRESENTERS

Alyson B. Goldman, *Graduate Student, Columbia University Teacher's College*

Marlana Moore, *Community Network Coordinator, The Collaborative, Rutgers University*

Michele Racioppi, *Program Assistant, NJ Historic Trust*

Photos, facing page: Marlpit Hall, Middleton (above); Asbury Park (below).



CELEBRATING PAST, PRESENT & FUTURE Afternoon Workshops

W-1 | Post-Sandy Tour of Monmouth County Shore Towns

Meet bus outside Brookdale Recreation

Center at 1:00 p.m.

The rebuilding process in communities afflicted by Superstorm Sandy and other flooding events poses particular challenges for historic preservation efforts. Requirements for elevating residential structures and flood-proofing commercial buildings may dramatically transform the look and function of older neighborhoods and historic districts. Historic integrity may be compromised when the spatial relationship between the structure, the parcel and the street are fundamentally altered.

This field workshop will visit selected Monmouth County communities affected by Sandy. A stop in Sea Bright, the site of devastated commercial and residential areas, will offer a discussion of both the opportunity to remedy long-standing planning mistakes and the deep concern for maintaining historic community character.

Note: This is a bus and walking tour. Please wear comfortable footwear and dress for the weather.

TOUR LEADER

Deborah Kelly, *Principal, Preservation Partners*

PRESENTERS

Gail Hunton, *Supervising Historic Preservation Specialist, Monmouth County Parks System*

Carlos Rodrigues, *PP, AICP, Independent Consultant*

W-2 | Camp Evans: Revealing the History and Preservation of a Military Research Site

Meet bus outside Brookdale Recreation

Center at 1:00 p.m.

The Camp Evans Historic District is a National Historic Landmark comprised of over 57 structures within a 37-acre campus, now preserved under the stewardship of a nonprofit organization. Its earliest buildings were constructed in 1914 for the Marconi Wireless Communication Company. During World War II, the U.S. Army Signal Corps acquired the site, and its confidential research played a key role in the development of radar. Radar and electronics study during the Cold War resulted in additional innovations and practical applications, such as satellite hurricane tracking. Army base operations were closed after 2005.



This field workshop will present Camp Evans in two parts. Following an overall tour and historic overview, participants will choose between:

- A walking tour that focuses on the site's history and technological advancements; or
- A hands-on tour presenting the complexities and methodologies of preparing of a preservation master plan for this unique site.

Note: This is a bus and walking tour. Please wear comfortable footwear and dress for the weather.

TOUR LEADERS/PRESENTERS:

Graham Caffisch, *Intern Architect, Historic*

Building Architects, LLC

Fred Carl, *Director, InfoAge Science History Center*

Sophia Jones, *Assoc. AIA, LEED AP, Associate,*

Project Manager, Historic Building Architects, LLC

Annabelle Radcliffe-Trenner, *AIA, RIBA, LEED*

AP, NCARB, Firm Principal, Historic Building Architects, LLC

W-3 | Bell Laboratories: A Rare Walk Into Its Past and Glimpse Into Its Future

Meet bus outside Brookdale Recreation Center at 1:00 p.m.

This important work of architecture was designed in 1957-1962 by the renowned architectural firm of Eero Saarinen and Associates. Sasaki, Walker & Associates, designed the complimentary 472-acre landscape. For more than four decades the two-million-square-foot complex housed nearly 6,000 scientists and staff including multiple Nobel Prize laureates. Saarinen's innovative design, in turn, fostered the many notable inventions of Bell Labs. The site is the birthplace of numerous technology advancements in telecommunications, some of these include data transmission over voice lines (otherwise known as the fax machine) and all of the necessary components that made the cell phone possible.

Now closed due to redevelopment, this tour provides a rare opportunity to visit the public areas and interior workspaces at Bell Labs. Research spaces and office design emphasized flexible layouts with a variety of contemplative and collaborative

spaces. The session will include presentations of its unique architecture and landscape, company history and the multi-year effort to preserve the complex and site. The discussion will invite Somerset Development, the current owner and developer who acquired the property from Alcatel-Lucent less than a year ago, to map the site's future mixed-use redevelopment.

Note: This is a bus and walking tour. Please wear comfortable footwear and dress for the weather.

TOUR LEADERS

Nina Rappaport, *Publications Director, Yale's School of Architecture*

Michael Calafati, *AIA, Principal,*

Michael Calafati Architect, LLC

TOUR HOST

Tom Michnewicz, *Vice President of Development, Somerset Development*

W-4 | Tales of Sandy Recovery: Archaeology on the Land and in the Water

Twin Lights I Room

Post Superstorm Sandy recovery efforts provided new information about the maritime and shoreline archaeological heritage of New Jersey. Beach replenishment and debris and sediment removal activities had the potential to impact significant historic and archaeological sites in and immediately adjacent to waterways. The archaeological work included historical research, side scan sonar and bathymetry analysis, and archaeological monitoring/reconnaissance, to identify known and potential historic resources. Decisions were made about the best ways to protect these resources and guide disaster recovery teams. During this session, maritime and terrestrial archaeologists will provide examples and anecdotes about efforts to locate historic resources (such as shipwrecks), monitor missions, and identify unanticipated discoveries.

MODERATOR

Michael Audin, *RPA, Environmental/Historic Preservation Manager,*

Federal Emergency Management Agency

PRESENTERS

Kelly Britt, *RPA, Archaeologist, Mitigation Division, Region II, U.S. Department of Homeland Security*

Brock A. Giordano, *RPA, Archaeologist, Dewberry*



Morgan MacKenzie, MA, RPA Maritime
Archaeologist, Dewberry

Katherine Marcopul, Supervising Historic Preservation
Specialist, Historic Preservation Office

Nicole (Nikki) Cooper Minnichbach, Cultural
Resource Specialist and Tribal Liaison, US Army
Corps of Engineers, Philadelphia District

Christopher P. Morris, Lead Maritime Archaeologist,
Dewberry

Lynn Rakos, M.A., R.P.A., Archaeologist, U.S. Army
Corps of Engineers, New York District

Raymond E. Tubby, Southeastern Archaeological
Research, Inc. (SEARCH) North Gulf Coast Office

W-5 | Preserving Historic Buildings through Recording

Meet guide outside Brookdale Recreation Center at 1:00 p.m. for walk to workshop location at Thompson Park. Participants may also drive to Thompson Park and meet the guide at 1:15 p.m.

In order to understand, contextualize, and preserve historic buildings, recording structures by measured drawings is a valuable and necessary tool. In spite of new digital techniques, this low-tech approach is practical, affordable and effective. Hand-drawn scaled field notes can stand as a final record of a building. This workshop will give participants a hands-on experience in the methodology of measuring buildings and creating scaled field notes as a means of preservation treatment. The presentation will cover the purposes and uses of measuring drawings, a history of the method, principles of measuring, and use of measuring tools.

Note: This workshop will be held at Thompson Park, a one-mile walk or very short drive from the conference location. Walking, standing, and bending will be required. Please wear safe footwear and clothing appropriate for outdoor work and weather. Bring a 25 or 30-foot tape measure, and mechanical pencils in .05mm and .07mm widths.

MODERATOR AND PRESENTER

Janet L. Sheridan, M. A. Historic Pres, Principal, Janet L. Sheridan

PRESENTER

Maria Cerda-Moreno, Architect

Photos, Fort Hancock and Sandy Hook Proving Ground Historic District (above); Bell Labs, Holmdel (below).

Afternoon Sessions

S-8 | What Does It Mean to be “Visitor Ready?”: Advice for Volunteer-Based Organizations

Fort Hancock Room

The NJ Heritage Tourism Master Plan notes that of 1,834 historic/cultural sites that have the potential to become tourism venues, only 333 are considered partially “visitor ready,” and only a third of that total who are full participants in the heritage tourism industry. Without big budgets and paid staff, many historic sites are managed by volunteers, and some are making great strides to be open more often and provide new means of interpreting their stories to the public. In this session, participants will learn about volunteer efforts at three historic sites to develop public outreach, promote visitation through web sites and electronic communication, expand programming, improve interpretation and open more hours for public events.

MODERATOR

Donna A. Harris, *MSHP, MPA, Principal, Heritage Consulting Inc*

PRESENTERS

Sean Blinn, *Board president, Jacobus Vanderveer House, Bedminster*

Tina Fiske, *Chair Donor Development Committee, Barrow Mansion Development Corporation, Jersey City*

Barbara Frake, *Chair of Vestry, St Mary’s Episcopal Church, Burlington*

S-9 | Best Practices for Historic Preservation Commissions

Navesink III Room

Chairs of several local historic preservation commissions will provide useful, practical information for commission members and a forum for lively discussion on topics relevant to good practice. No matter if their commissions are advisory or regulatory, participants will learn valuable lessons about good record keeping, meeting protocol, conflict of interest, community relations, and using the *Secretary of the Interior’s Standards for Historic Preservation* in decision making. The panel will

also explore commission related issues that have resulted from Superstorm Sandy and leave ample time for audience participation.

This session will fulfill continuing education requirements for the Certified Local Government program.

MODERATOR

Dorothy P. Guzzo, *Executive Director, New Jersey Historic Trust*

PRESENTERS

Daniel P. Barr, *Principal, Dan Barr Consulting*

Elaine Gold, *Hoboken Historic Preservation Commission*

Jeanette Lloyd, *Chair, Beach Haven Historic Preservation Committee*

Gerry Scharfenberger, *Ph.D., Director, Office for Planning Advocacy, New Jersey Department of State*

S-10 | Climate Change, Disaster Planning, and Cultural Landscapes

Navesink I Room

Traditional historic preservation approaches must be augmented with fresh thinking and new strategies for dealing with the escalating impacts of climate change. The National Park Service, aware that devastating storms and rising seas are rapidly becoming the new normal, is looking critically at its cultural resource management approaches. Using a cultural landscape lens, the session’s presentations will illuminate some of the disaster planning concepts, strategies, and decisions at work in the National Park Service.

MODERATOR

Shaun Eyring, *MLA, Historical Landscape Architect and Chief, Resource Planning and Compliance, National Park Service*

PRESENTERS

Sarah Killinger, *Historic Preservation Specialist and Hurricane Sandy Compliance Coordinator, National Park Service*

Jamie McGuane, *Olmsted Center for Landscape Preservation*

Cheryl Sams O'Neill, *Historical Landscape Architect and GIS Coordinator*

David Uschold, *Historical Landscape Architect and Regional Section 106 Coordinator, National Park Service*

S-11 | CAPES at 25: The Intersection of Archives, Collections Management and Preservation

Twin Lights II Room

For a quarter-century, the Caucus Archival Projects Evaluation Service (CAPES) has provided small- to mid-size institutions holding archival records with free professional archival consultants to begin assessing their preservation and collection management needs, and to recommend practical solutions. Many such repositories keep valuable manuscripts, books, photographs, film, video and sound recordings under conditions that endanger their survival, frequently within historic buildings. Moreover, the same institutions also face similar management and preservation challenges in caring for museum artifact collections. This session will review the past impact of CAPES, and explore how archivists, museum curators, and historic preservationists may take an interdisciplinary approach to assessing the needs of institutions that care for archival, library and artifact collections simultaneously.

MODERATOR

Karl J. Niederer, *Historic Preservation Strategic Planning and Project Manager, NJ Historic Preservation Office*

PRESENTERS

Sara R. Cureton, *Executive Director, NJ Historical Commission*

Fred Pachman, *MLS, CAPES Coordinator, NJ Caucus, Mid-Atlantic Regional Archives Conference*

Laura M. Poll, *Librarian/Archivist, Monmouth County Historical Association*

Nicholas J. Wood, *Vice President, NJ Association of Museums*

S-12 | Making the Connections in Heritage Tourism

Navesink I Room

This panel will present example-based approaches to Heritage Tourism that encourage historic and cultural sites to work outside their four walls and develop partnerships. Representatives from state, county and regional entities will discuss how historic sites in New Jersey engage the arts, cultural, and business communities in their efforts to increase participation and visitorship, and to improve the visitor experience. Participants will learn about the available tools to promote engagements between organizations and with sites' targeted audiences while also reaching a broader audience. At the end of the presentations, an interactive conversation with the audience will explore where Heritage Tourism will go into the future.

MODERATOR

Susan Coen, *Private Consultant*

PRESENTERS:

Noreen Bodman, *Executive Director, Crossroads of the American Revolution Association*

Leslie Bensley, *Executive Director, Morris County Tourism Bureau*

Adam Perle, *Vice President, Princeton Regional Chamber of Commerce*

S-13 Redefining Historic Sustainability in the Largest Historic District in the State

Twin Lights II Room

Using Bridgeton Historic District as its focus, this panel session will discuss different perspectives on historic preservation's role in creating a sustainable community that is capable of only surviving social changes and economic downturns and reinventing itself for a new generation of residents and community partners. Presenters will introduce the Center of Historic American Building Arts (CHABA), a preservation initiative that collaborates in bilingual "HomeFronts" workshops with recent immigrants living in Bridgeton's historic housing stock. Participants will gain knowledge of the impacts of new immigration on urban culture in New Jersey and learn new strategies to reach out to multicultural and low-income communities.

MODERATOR

Flavia Alaya, *PhD, Co-founder, Center for Historic American Building Arts*

PRESENTERS

Jaime Bustos-DeHaro, *CHABA intern*

Rev. David Rivera, *CHABA community liaison*

Rosemary DeQuinzio, *Chair, City of Bridgeton Historic District Commission*

Kevin Rabago, *Director of Development & Planning, City of Bridgeton*

Robyn M Rodriguez, *Ph.D., Professor, University of California/Davis*

S-14 Lighting for Historic Buildings: Design and Technology

Navesink III Room

Lighting is an important feature of any historic building and requires specific decisions about purpose and design, which should be balanced with choice of hardware and new technologies. Participants will learn about the history of lighting, basic design ideas, examples and rules of thumb for lighting the interior and exterior of historic buildings, and on the latest lighting advancements of an ever-changing industry. There will be project examples of appropriate lighting for historic buildings including a variety of venues including historic train stations, barns, theaters and historic house museums. The information will be accessible to architects, owners and designers.

MODERATOR

Margaret M. Hickey, R.A., *Historic Preservation Specialist, Connolly & Hickey Historical Architects*

PRESENTERS

Michael Barber, *Associate IALD, Principal, The Lighting Practice*

Robert Newell, *Principal, Robert Newell Lighting Design*

S-15 | Collecting: A Thing of the Past?

Fort Hancock Room

Do the objects of our affection, our beloved collections, prevent us from running successful institutions? The answer may have more to do with what an institution chooses to collect. Join the NJ Association of Museums for four case studies of collecting and presenting intuitions: a museum that utilizes an existing collection and collects rarely, one that relies on partnerships to manage its collection, and institutions that balance these models. Panelists will discuss the prerequisites for collaborative collecting efforts that may create more viable and sustainable institutions for the future.

MODERATOR

Nicholas J. Wood, *Art Program Assistant, Ocean County Cultural & Heritage Commission*

PRESENTERS:

Elizabeth G. Allan, *Curator, Morven Museum and Gardens*

Siobhan R. Fitzpatrick, *Curator, Museum of Early Trades and Crafts*

Sarah Hagarty, *Curator, New Jersey Vietnam Veterans' Memorial Foundation*

Bernadette M. Rogoff, *Curator, Monmouth County Historical Association*

Closing Plenary: The Relevance of History

Navesink Room

Why is history—both knowledge of the past and the practice of preserving, researching and interpreting evidence of the past – important to people, their communities, the nation, and the world? Is history crucially important to our future, or simply a pleasant pastime? Those who practice history are quick to assert its importance. For most Americans, history plays a relatively minor role in comparison to other concerns and recreational activities.

Dr. John W. Durel will discuss the founding, progress and future of the History Relevance Campaign. With direction from public historians, the campaign's intent is to articulate and demonstrate the relevance of history in the lives of individuals, communities and the nation in a way that resonates with both the general public and potential history funders.

Celebrating

Past, Present & Future



2014 NJ History and
Historic Preservation
CONFERENCE

SPEAKERS



CELEBRATING PAST, PRESENT & FUTURE

Speakers

Flavia Alaya, Ph.D., is a professor of cultural history at Ramapo College and an interdisciplinary scholar of place in public culture and urban development. The Center for Historic American Building Arts (CHABA), which she co-founded in 2009, has drawn attention for its multicultural and anti-gentrifying urban philosophy and has revived community support for preservation. She serves on the Bridgeton HPC, where she inaugurated the Bridgeton Rose Historic Preservation Awards and the Historic Preservation Trust Fund. Previously she chaired the Paterson HPC and worked to preserve Hinchliffe Stadium, the last of the Depression-era Negro Leagues ball fields in the metro area, and attain National Historic Park status for the city's Industrial District.

Elizabeth G. Allan received her M.S. in History of Art, Theory & Display from the University of Edinburgh, Scotland and her B.A. in History and Art History from the College of the Holy Cross in Massachusetts. She spent two years as the assistant in the Decorative Arts Department at Hirschl & Adler Galleries in Manhattan. At the International Print Center New York, the National Museum of Scotland, and the Lower East Side Tenement Museum, Ms. Allan cared for and expanded museum records and collections. Within the Visual Arts Research Institute (Edinburgh), and the American Antiquarian Society, Ms. Allan has actively participated in exhibition development. Since joining Morven as Curator of Collections and Exhibitions in January 2010, she has mounted three changing exhibitions a year.

Michael Audin, RPA, is a local archaeologist and currently the Environmental and Historic Preservation Advisor for the Sandy Recovery Office. He has established or assisted in establishing FEMA agreements with New Jersey SHPO, DEP, and the Army Corps of Engineers for Hurricane Sandy. He has been the primary historic preservation lead for the Sandy disaster in NJ for the past eight months. Prior to joining FEMA he worked for Langan Engineering and Environmental Services, Inc. in

the Natural and Cultural Resource Division where worked on all levels of cultural resource projects, including phase I, II and III archaeological investigations, Historic American Building Surveys, government agency coordination, environmental assessments, environmental impact statements, and natural resource permitting and reviews for the Mid-Atlantic region.

Michael A. Barber, LEED AP BD+C, joined The Lighting Practice in 1995 and became a principal of the firm in 2004. He serves as the firm's sustainable design coordinator, working with the staff to maximize their design vision while minimizing the impact to the environment. Mr. Barber has more than 18 years of experience in the lighting profession, designing for health care, academic, commercial, and retail environments. In addition, he has conducted lighting energy audits for approximately 20 million square feet of academic, hospitality, and manufacturing facilities. His professional activities include participation on the IALD's Energy and Sustainability committee.

Daniel P. Barr was raised in Hamburg and still lives in his childhood home. He is a former member of the Hamburg Board of Education, is in his third term as a Hamburg Councilman, and is currently serving as Deputy Mayor. As councilman, he formed the Hamburg Historic Preservation Commission (HPC) and worked to designate the Gingerbread Castle/Wheatworth Mill site as a protected historic site. Under his leadership, the HPC has achieved Certified Local Government status, designated multiple properties and is in the process of designating Main Street as a historic district. Mr. Barr enjoys lecturing at the school on local history, and was honored by the DAR as recipient of its National History award.

Leslie Bensley has been the Executive Director for the Morris County Tourism Bureau for sixteen years working to effectively market Morris County as a premiere heritage, cultural and eco-tourism destination. She has experience working with nonprofit organizations in the realms of public relations, strategic planning, marketing, and product development.



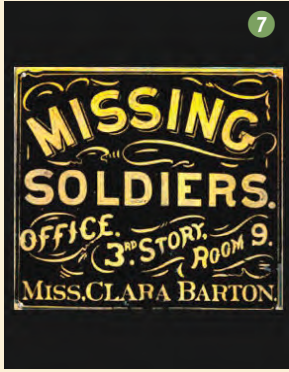
Photos, facing page, clockwise from top left: Asbury Park Convention Hall, Seabrook Wilson House, Middletown; Monmouth Battlefield State Park, Manalapan/Freehold; Ocean Grove Auditorium.

Continues on page 26



VISIT HISTORY IN

- 1 | Camp Evans National Historic Landmark** | InfoAge Science Center | The 37-acre site with 16 buildings is a time capsule of a WWII secret radar laboratory. Learn about early wireless and Naval communication, women's history, McCarthyism, space exploration, weather satellites, and Cold War innovation. | 2201 Marconi Rd | Wall, NJ 07719 | www.campevans.org | Hours: Wed, Sat, Sun 1–5 pm | ADA: Y | Parking: on site
- 2 | Christ Church, Shrewsbury** | Founded in 1702, the present church building dates from 1769 and was designed by noted colonial architect Robert Smith. It features canopied pews, a historic Odell tracker organ, a tower clock and bell, and mid-20th century stained glass windows. | 380 Sycamore Avenue | Shrewsbury, NJ 07702 | www.christchurchshrewsbury.org | 732-741-2220 | Hours: 9 am–2 pm T-Fr | ADA: Y | Parking: on site
- 3 | Eden Wooley House** | Township of Ocean | Historical Museum | Dating to the 1700s and later expanded, the building was saved from demolition, restored and opened as a museum in 2009. | 703 Deal Road | Ocean, NJ 07712 | www.OceanMuseum.org | 732-531-2136 | Hours: T-Th 1–4 pm | 1st & 2nd Sun. of Month 1–4 pm | Thurs 7–9 pm, April to Dec | ADA: Y | Parking: on site
- 4 | The Historic Village at Allaire** | The Historic Village at Allaire is a living history museum dedicated to interpreting and preserving the local history of the Howell Iron Works in the early 19th century. | 4263 Atlantic Avenue | Wall, NJ 07727 | www.allairvillage.org | 732-919-3500 | Hours: Varies by season, check website for most up to date information | ADA: Y, most buildings | Parking: on site
- 5 | St. Georges by the River Episcopal Church** | Rumson | Established in 1874, the present structure was consecrated in 1908 and expanded to eventually include the parish hall, rectory, cloister, offices, chantry and Chapel of the Resurrection. | 7 Lincoln Ave | Rumson, NJ 07760 | www.stgeorgesrumson.org | 732-842-0596 | Hours: 9 am-4:30 pm daily | ADA: Y, wheelchair ramp | Parking: Street
- 6 | Woodrow Wilson Hall National Historic** | Landmark | Monmouth University | This 1929 mansion was built for F.W. Woolworth Co. president Hubert Templeton Parson and designed by Horace Trumbauer and Julian Abele, the first professional African-American architect. | 400 Cedar Avenue | Long Branch, NJ 07764 | www.monmouth.edu | 732-571-3400 | Hours: Extensive, but varies over school year | ADA: Y | Parking: Lot 18 on Larchwood Ave
- 7 | National Guard Militia Museum of New Jersey** | The Museum was founded in 1992 at the Sea Girt National Guard Training Center, a training venue for the National Guard since 1885 and the summer residence of New Jersey's governors. | Sea Girt Ave & Camp Drive | Sea Girt, NJ 08750 | www.nj.gov/military/museum | 732-974-5966 | Hours: 7 Days/wk, 10 am-3 pm | ADA: Y | Parking: on site
- 8 | Keyport Fire Museum & Education Center** | In the heart of downtown, the former Raritan Hose Co. No. 2., built in 1900, allows visitors to learn about Keyport's fire-fighting history and view unique items, including its 1855 hose cart. | 86 Broad St | Keyport, NJ 07735 | www.keyportfd.org | 732-739-KFMA (4030) | Hours: Weekends only, March 7 – Dec. 14 | ADA: N | Parking: Municipal
- 9 | Historic Walking Tours of Ocean Grove** | Ocean Grove Historical Society | Ocean Grove was founded as a Camp Meeting site in 1869. The Society offers walking tours of its museum, Great Auditorium, Centennial Cottage and the interior of a tent. | 50 Pitman Avenue | Ocean Grove, NJ 07756 | www.oceangrovehistory.org | 732-571-3400 | Hours: M-Th 10-4, F-St 10-5 | ADA: Museum and Auditorium are accessible; Cottage & tents are not | Parking: Street
- 10 | Court Street School Education Community Center** | Constructed in 1921 and expanded in 1926, this Colonial Revival style brick schoolhouse was designed by locally prominent architect Warren H. Conover and is a major focal point of its African-American community. Today, the school houses educational programs. | 125 Court Street | Freehold, NJ 07728 | www.courtstreetschool.org | 732-462-1064 | Hours: M-F, 4:30-6:30pm | ADA: Y | Parking: on site



7



10



6



2



8



3

MONMOUTH COUNTY



4



5



1



9

Speakers (continued from page 23)

Regina Binder has more than 20 years of visitor planning and development experience, working with tourism and cultural ministries, NGOs, regional and federal authorities, and private entities to achieve their sustainable preservation, planning and development goals. Ms. Binder previously worked on Wall Street where she was research director for a large money management firm. She is an advisor to the United Nations, global real estate developers and all levels of government. She worked on projects ranging from international heritage sites such as Angkor Wat in Cambodia and the Markets of Trajan (100 AD) in Rome, to developing sustainable tourism routes in Northern Perú and Galicia in Spain. She is passionate about mitigating visitor impact while increasing tourism benefits to local communities.



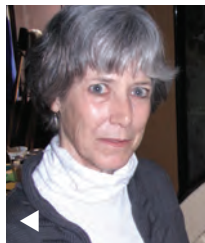
Sean Blinn is the Board President of the Jacobus Vanderveer House in Bedminster NJ. In four years as a board member, he has been instrumental in the development of a new web site, a new quarterly e-newsletter and Facebook postings for the organization in the last year. He helped guide the site's 2013 Heritage Tourism Assessment: Audience Research Study and Interpretive Plan, which was partially funded by the NJ Historic Trust and compiled by Heritage Consulting Inc and Dr. Emily Cooperman of ARCH Consulting of Philadelphia. The Assessment recommended a variety of outreach strategies and new interpretive tools to offer visitors a quality educational experience, and Mr. Blinn is proud to share these accomplishments.



Noreen Bodman is the former state tourism director. She has been involved with preservation and conservation issues through her work in hospitality, tourism and with the Jersey Shore Partnership. At the Jersey Shore Partnership, she was involved in branding, marketing, partnership programs and community outreach. Her experience also includes strategic planning and fundraising in the public and private sectors.



Bill Bolger is an architectural historian and the National Park Service Northeast Regional manager for the National Historic Landmarks Program for the past 25 years. His field work prior to the NPS was focused on South Jersey where he now resides in Mount Holly.



Kelly Britt, RPA, is currently a CORE Archaeologist in FEMA's Region II's Mitigation Division. Dr. Britt received her Ph.D. in Anthropology from Columbia University in 2009 where she focused her research on historical archaeology in the Northeast. Her historic preservation work has allowed Kelly to work in a variety of settings, including museums, academia and private cultural resource management firms, in addition to free lance projects and consulting. While still a graduate student, she worked at NY Uearthed, New York City's only archaeological museum dedicated to the city's archaeological past. She has taught a variety of courses at Columbia University, Lebanon Valley College and is currently an adjunct professor of Anthropology at Fordham University at Lincoln Center.

Jaime Bustos-DeHaro immigrated with his family to Bridgeton at the age of eleven and eventually graduated from Bridgeton High School. His artistic talent was recognized in an annual competition by Watson & Henry Associates of Bridgeton, who took him on as an architectural intern and set his sights toward an architectural career. He is currently pursuing his degree at Boston Architectural College, where he was the recent winner of the prestigious Ada Louise Huxtable Award, based on his work with CHABA and Maria Cerda-Moreno on the translation and editing of the Bridgeton Design Guidelines into a usable Spanish-language document.

Meredith Arms Bzdak, Ph.D., an architectural historian, is a Partner in the Princeton, NJ firm Mills + Schnoering Architects, LLC. As an Associate member of the Graduate Faculty at Rutgers University in the Art History Department, she teaches classes on the development of the modern city (specifically New York and Los Angeles), the preservation of the recent past, and modern Italian architecture. She is a member of the Board of Directors of DOCOMOMO US and the DOCOMOMO US New York/Tri-State chapter. She holds a B.A. in Art History from Mount Holyoke College and a Ph.D. in Art History from Rutgers University.

Michael Calafati, principal of Michael Calafati Architect, LLC, is an architect with extensive experience in the area of historic buildings and preservation. Located in Cape May, the practice's award winning projects are located throughout New Jersey. In addition to serving as a Trustee of the Monmouth County Historical Association and on the Planning Committee for the annual NJ History and Historic Preservation Conference, Mr. Calafati is the current chair of AIA-New Jersey's Historic Resources Committee and a past President of Preservation NJ. His award winning projects include the John F. Peto House and Studio in Island Heights, the Kennedy-Martin-Stelle Farmstead in Basking Ridge and the Charrette for Bell Labs.



Graham Calfisch joined the HBA team in 2013. He earned a B.A. in Archaeology and Art History from the University of Minnesota in 2010 and a M.A. in Architecture with a focus in Historic Preservation from the University of Wisconsin-Milwaukee in 2013. Mr. Calfisch is involved in various phases of building documentation and construction, including conducting building condition assessments and preparing Preservation Plans, Historic Structure Reports, producing design development and construction documents. He regularly assists the project manager during construction administration and is also responsible for graphic design in the preparation of reports and marketing materials.



Fred Carl has donated time, expertise and funds to save Camp Evans since 1993, founding InfoAge to inspire others to learn science and history. Under his leadership, InfoAge has grown from a concept to a science community center. Saved from demolition twice, Camp Evans is now a 37 acre National Historic Landmark in a historic district containing 16 buildings. In seven buildings, there are 17 museum spaces, a radar history archive and a library. Mr. Carl is a graduate of Monmouth University with a B.S. Degree in science education and a M.S. degree in computer science. During his professional career Mr. Carl was employed by Amdahl Corp., IBM and Micro Strategies as a software engineer and pre-sales support engineer.

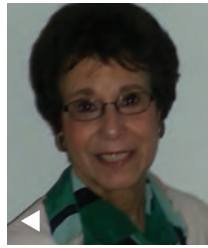


Glenn Ceponis has spent over twenty years in the field of cultural resource management, for the last ten years as a Principal Historic Preservation Specialist for the New Jersey Historic Trust. Mr. Ceponis helps grant recipients manage capital and planning preservation grants and coordinates the Historic Trust's preservation easement program. This includes writing and negotiating preservation easements, reviewing proposed projects, and conducting annual site visits. Prior to his work at the Trust, Mr. Ceponis completed a wide array of cultural resource projects including preparation of National Register nominations HABS/HAER reports, Historic Structure reports, and Design Guidelines, among others. A resident of New Jersey, Mr. Ceponis served nearly ten years on his local Historic Preservation Commission.

Maria E. Cerda-Moreno, AIA, is an architect and preservationist practicing in Cumberland County. Educated in Latin America and the UK, she worked in North Jersey for several architectural firms prior to becoming an associate for the historic preservation firm of Watson & Henry Associates in Bridgeton. Her consulting work on several National Register nominations led to board memberships for preservation organizations. She was resident architect for Paterson's Historic Preservation Commission and New Jersey Advisor to the National Trust for Historic Preservation. Ms. Cerda-Moreno currently serves on the Cumberland County Cultural and Heritage Commission and is a founding board member of Bridgeton's Center for Historic American Building Arts.

Andrew Clark has been teaching professionally for the past fourteen years currently at Bridgewater-Raritan High School in Somerset County where his classes are with U.S. European History honors and European History Advance Placement students. Mr. Clark graduated from Elizabethtown College with a B.S. degree in Social Studies Education, concentrating in History and received his M.A degree in History from Rutgers University-Newark. He has created, developed and implemented curriculum, as well as adapted courses to the new Common Core Standards. In addition to working on the NJ350 Project, he has been involved with programs associated with the Gilder-Lehrman Institute of American History and the Teaching American History Project through the U.S. Department of Education.

Susan P. Coen served as director of the Union County Division of Cultural and Heritage Affairs from 1992 until 2006, where she conceived and implemented high impact programs in history and the arts, and received commendations from both the NJ Historical Commission and the NJ State Council on the Arts. Ms. Coen serves on the Advocates for NJ History and ArtPride boards, was president of the Association of NJ Cultural and Heritage Agencies, and is a founding member of the NJ Cultural Access Network (formerly the Arts Access Task Force). Now a consultant, Ms. Coen continues to help develop robust and sustainable cultural organizations and continued to serve on the NJ Historical Commission.



Jennifer Coffey has been with the Stony Brook-Millstone Watershed Association for 10 years. As its Policy Director, she oversees projects that support proactive planning and environmental stewardship. Jennifer holds a B.A in Communication and M.A. degrees in Environmental Policy Studies and Environmental Science. She is the current Communications Chair for NJ Keep It Green, a coalition of more than 180 conservation, stewardship, farming, historic, hunting, and fishing organizations. She has worked with the U.S. Environmental Protection Agency, Region II and the North Jersey Transportation Planning Association as a researcher and program coordinator bringing key stakeholders together to revitalize brownfields in urban communities.



Brigitte Cook, AIA, LEED AP, is a registered architect at Platt Byard Dovell White Architects, LLP and an Adjunct Professor at Columbia University in the Graduate School of Architecture, Preservation and Planning. She holds a M.A. Architecture degree and a M.S. in Historic Preservation degree from Columbia University and a B.S. in Design from Clemson University.



Sara R. Cureton joined the staff of the NJ Historical Commission in 2004 and now serves as its director. Her career began with positions at several historic sites in the Garden State, working primarily on interpretation and historic preservation projects. Active professionally, she has served on the boards of the Mid-Atlantic Association of Museums, the



New Jersey Association of Museums, and South Jersey Cultural Alliance. Ms. Cureton earned a B.A. in Folklore and Mythology from Harvard University, and an M.A. in Medieval Studies from the University of York in the U.K. She was recognized by the NJ Historical Commission with an Award of Recognition in 2003, and received the John Cotton Dana Award from the NJ Association of Museums in 2002.

Erin Dougherty has been the Executive Director of the Historical Society of Princeton since 2007. During her tenure the institution has opened a second operating site, the Updike Farmstead, which has served to expand the Society's public programming and mission. She received her M.A. in Education from The College of William and Mary, and her B.A. from the University of Michigan. Her tenure in history and art museums has spanned over 20 years.

Paul G. Edelson has been the President of the Township of Ocean Historical Museum since 2013. Prior to that he was the House Manager for the Museum, and worked on the move of the Eden Woolley House to its current location and the renovation of the House into the Township of Ocean Historical Museum. Mr. Edelson's work has focused on the properties the Township has charged the Museum with maintaining and supervising, including the Eden Woolley House, the Pool House and other properties.

Shaun Eyring, MLA, manages the Resource Planning and Compliance Division in the National Park Service's Northeast Regional Office in Philadelphia, PA. She received a M.A. in Landscape Architecture with a Certificate in Historic Preservation from the University of Virginia. Shaun joined the National Park Service in 1992 to develop and implement a region-wide cultural landscape preservation program. Currently, she directs an interdisciplinary team that provides environmental compliance and policy technical expertise to national parks and partners in the Northeast Region. She is also National Park Service co-coordinator of Designing the Parks, an initiative which promotes healthy, vibrant, well-designed public parks as a core of civic life.

Tina Fiske is a Director on the Board of the Barrow Mansion Development Corporation in Jersey City NJ. Tina currently Chair's the Donor Development Committee. Ms. Fiske is managing the Heritage Tourism Assessment: Audience Research Study and Interpretive Plan partially funded by the New Jersey Historic Trust that was awarded to the Barrow Mansion in Fall 2013. Consultants for this project include Heritage Consulting Inc. and Dr. Emily Cooperman of ARCH Consulting in Philadelphia, PA. Ms. Fiske will talk about the early action projects of this grant including website improvements.

Siobhan R. Fitzpatrick has previously worked with the National Park Service and currently serves as the Curator of Collections and Exhibits for the Museum of Early Trades & Crafts in Madison, NJ. She has received grants for her exhibits and lecture series at the METC from the New Jersey Council for the Humanities and the New Jersey Historical Commission. Her latest article "Seeing Beyond the House: Historic Structures as Museums" will appear later this year in the Winter 2014 issue of Collections.

Barbara Frake is a warden and member of the Vestry of St. Mary's Church in Burlington, NJ. She has been a member of the Vestry for more than nine years and managed the Assessment of Heritage Tourism Potential for the church complex, undertaken by Heritage Consulting Inc. in Spring 2013. This assessment was part of a larger project, the preparation of a Preservation Plan partially funded by the New Jersey Historic Trust and undertaken by Westfield Architects and Preservation Consultants of Haddon Heights NJ. Ms. Frake is working on Church website upgrades and other outreach strategies recommended in the Assessment of Heritage Tourism Potential and will discuss progress to date.

Randall Gabrielan, after a long stint as an executive in the property-casualty insurance industry, turned an avocation into a second career through long-term leadership of the Middletown Township Historical Society and extensive writing and lecturing activities. His first local history, published in 1994, began a list that includes places in five counties in two states and the detailed study of a disaster forgotten by history, Explosion at Morgan. In 2000, Mr. Gabrielan became executive director of the Monmouth County Historical Commission in 2000, serving until he was appointed commissioner in 2014. He organized the annual self-guided history tour "A Weekend in Old Monmouth," lectures extensively and is the appointed historian of Monmouth County.

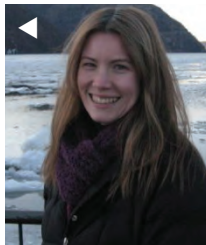
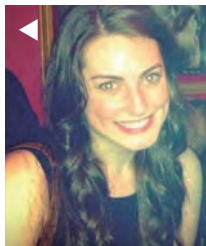


Arlene Gardner is the founder and executive director of the NJ Center for Civic Education at Rutgers, The State University of New Jersey. The Center provides institutes, workshops and conferences for teachers about the Bill of Rights, civics, government, history, humanities, interdisciplinary teaching, global education, controversial issues, conflict resolution and prejudice reduction, as well as statewide civic education competitions for middle and high school students. Ms. Gardner has practiced law in California and New Jersey; has worked as Assistant Counsel to the Governor of New Jersey; and more recently, she co-authored Conflict Resolution and United States History: The Colonial Period through Reconstruction and Conflict Resolution and United States History: The Gilded Age through the 20th Century (2008). This two-volume teacher resource guide provides an engaging methodology and rich historical background for middle and high school students to learn American history.

Rick Geffken is an archival historian who lives in Farmingdale, NJ. Retired from careers in the computer industry and teaching, he is researching the history of the original Shrewsbury Township and its connection to the founders of New Jersey. He is a member of local historical societies, including those in Farmingdale, the Borough of Shrewsbury, as well as the Monmouth County Historical Association. His articles have been published in The Howell Times, the on-line Patch blogs, The Crown (newsletter of Christ Church Shrewsbury), The Monmouth Connection (newsletter of the Monmouth County Genealogy Society; Rick is also the Publisher), and in various historical society publications. His website is Livinghistorynj.com.

Lisa Ginther is a Senior Associate with MBI-GluckShaw, a full service government relations firms representing the Advocates for NJ History for over a decade. Ms. Ginther represents a number of clients in pursuing their legislative, regulatory and executive branch initiatives. She also coordinates community outreach activities on large highway construction projects around the state, working with businesses, residents and elected officials. She serves as Executive Director of the NJ Public Sector Managers' Association, which represents career state government managers, and is a volunteer speaker at the National Breast Cancer Coalition's annual advocacy conference. Lisa earned an Associate's degree from Mercer County Community College and a B.A. from Rider University and is a Lead New Jersey Fellow.

Brock A. Giordano, *RPA*, has over 12 years experience as an archaeologist, with an interdisciplinary background in archaeology, architectural history, cultural and historic preservation, anthropology, and American studies. He has archaeological and architectural experience conducting numerous Phase IA, IB, II, and III cultural resource investigations in New Jersey, New York, Pennsylvania, Michigan, and Rhode Island. Mr. Giordano earned his M.A. in anthropology from Western Michigan University in 2005 where he concentrated his research on the French Fur Trade outpost, Fort St. Joseph (1691-1781). He received his B.A. in American Studies with a concentration in Cultural and Historic Preservation from Salve Regina, Newport. Mr. Giordano also teaches classes in archaeology, history, and cultural resource management as adjunct professor at Monmouth University.



Alyson B. Goldman is currently completing a M.A. in Arts Administration at Columbia University Teacher's College. She graduated with Honors from Rutgers University's School of Arts and Sciences in 2012 with a major in Art History and minor in Psychology, as well as a Certificate in Historic Preservation. In addition to her DOCOMOMO internship, she has held part time positions with a range of cultural organizations, including George Street Playhouse, the Museum of Jewish Heritage, Aperture Foundation, and the Whitney Museum of American Art. Ms. Goldman is currently working as a Development Intern for The Frick Collection.

Elaine Kiernan Gold is a historic preservation consultant for Bergen County's Division of Cultural and Historic Affairs. She received her Master's degree in Historic Preservation from the University of Georgia, with a focus on preservation planning and building materials conservation and holds a Masters in Library and Information Science from Rutgers University. As a preservation planner, Elaine has worked on a number of cultural resource investigations throughout the Mid-Atlantic and has worked as a Historic Preservationist for the New York City Landmarks Preservation Commission. Elaine currently resides in Hoboken with her husband Lloyd and their daughter Neva—who is herself a 5th generation Hobokenite. Elaine has served on the Hoboken Historic Preservation Commission since 2013.

Dorothy P. Guzzo was appointed Executive Director of the NJ Historic Trust in February, 2008 after serving for 13 years as the Deputy State Historic Preservation Officer, where she oversaw the NJ and National Registers of Historic Places, project certification to qualify for Investment Tax Credits, certifying local governments for implementing programs on the municipal level, historic and archaeological resource inventory and resource protection through state and federal regulations. Ms. Guzzo has served on the boards for the Crossroads of the American Revolution Association, NJ Historical Commission, NJ Historic Trust and Main Street NJ Board of Advisors and was the past Chair of the Alice Paul Institute. Ms. Guzzo was a member of the New Jersey Heritage Tourism Task Force, charged with creating a Heritage Tourism Masterplan for the state of New Jersey.

Sarah Hagarty is the Curator of the New Jersey Vietnam Veterans' Memorial Foundation in Holmdel, NJ. She manages the Foundation's collections, exhibitions, programming and volunteers. Ms. Hagarty has held various curatorial and management positions at cultural institutions throughout New Jersey and Pennsylvania including Independence National Historical Park, the Salem and Camden County Historical Societies and the University of Pennsylvania Museum.

Donna A. Harris, *MSHP, MPA*, is the principal of Heritage Consulting Inc., a Philadelphia, PA based consulting firm founded ten years ago, that provides assistance to non-profit organizations and government agencies nationwide in the following practice areas: downtown and commercial district revitalization, historic preservation, tourism product development and non-profit organizational development. AltaMira Press published her book *New Solutions for House Museums: Ensuring the Long-Term Preservation of America's Historic Houses* in 2007. For nine years Ms. Harris has been speaking about and consulting with historic house museums around the country about alternative uses and stewardship responsibilities. Preparing heritage tourism assessments and audience research studies have been a major focus of her practice for the last two years.

James E. Hartling, Partner, Urban Partners, has more than thirty years of experience in city planning and community and economic development. He is the founding partner of Urban Partners, a Center City Philadelphia-based professional consulting firm that assists public, nonprofit, and private clients in the planning and implementation of urban development projects. Prior to this, Mr. Hartling served as Deputy Director of Economic Development of Philadelphia's Community Development program and was a faculty member at the University of Texas. Mr. Hartling serves on the faculty of the Fels Institute of Government at the University of Pennsylvania and is also the elected Chairman of the Board of Entrepreneur Works.

John Hatch, AIA, has more than 20 years with Clarke Caton Hintz, managing the design and construction of an array of architecturally significant buildings including the restoration of Morven in Princeton, the Roebing Complex Re-development, and the restoration of the Hunterdon County Courthouse. In addition to his historic work, he has managed school projects and studies, and a variety of other projects that address issues of context, civic life and sustainability. Mr. Hatch is a registered architect, an AIA member and LEED accredited professional who received his B.A. from Princeton University, M.A. in Architecture from the University of Virginia and earned a Certificate in Historic Preservation from the University of Pennsylvania. He actively serves on the boards of both local and state-wide history and preservation organizations.

Rev. Connor Haynes has been rector of St. Mary's Church since 1996. As pastor of the congregation, he has been actively involved in plans for preservation of St. Mary's complex of historic buildings and grounds. He has personally conducted tours and given lectures regarding the history and architecture of the buildings to tour groups, school classes, professional educators' enrichment programs, and more. Along with Barbara Frake and other leaders of the congregation, he is interested in maximizing St. Mary's potential for interaction with the community, including as a historic tourism site.



Margaret M. Hickey, R.A., is the Principal Historic Preservation Specialist for Connolly & Hickey Historical Architects, located in Cranford. Connolly & Hickey is an architecture and historic preservation firm specializing in the restoration, rehabilitation and adaptive use of a variety of historic resources. She develops the overall preservation strategies for projects involving historic resources. Her experience includes the preparation of condition assessment reports, historic preservation plans, historic structure reports and interpretive plans, and the development of design and contract documents, including drawings and technical specifications for historic preservation projects. Ms. Hickey received her M.S. in Historic Preservation from Columbia University and her B. Arch. from the NJ Institute of Technology.

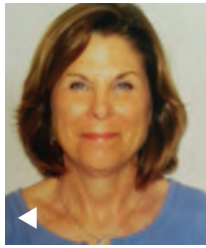
Gail Hunton is Supervising Historic Preservation Specialist with the Monmouth County Park System where her responsibilities include research and planning for historic sites and structures, project management for building restorations and archaeology, exhibitions, history projects and publications. Ms. Hunton also maintains a consulting practice in historic preservation, specializing in work with municipalities and historic preservation commissions. Among her publications are City of Plainfield Design Guidelines for Historic Districts and Sites; Town of Westfield, New Jersey: Design Guidelines for Historic Sites and Districts; Design Guidelines for Cranbury Village Historic District, Cranbury Township, NJ.; A Home Renovators' Guide to Historic Ocean Grove; and Built in Milwaukee: An Architectural View of the City.

Sophia Jones, Associate AIA, LEED AP O + M, joined the HBA team in 2005. She earned her Bachelor of Architecture from the University of Miami and a M.S. in Historic Preservation from the University of Pennsylvania. Ms. Jones is involved in all phases of building documentation and construction, including conducting Building Condition Assessments, producing Design Development and Construction Documents, and performing Construction Administration. She also participates in writing Preservation Plans, Historic Structures Reports, and Vision Plans. Ms. Jones has been active in the preservation community for over ten years and is currently the Chair for the New Jersey Historic Sites Council, an advisory board on historic preservation for the State of New Jersey.

Deborah Kelly is an independent historic preservation consultant with Preservation Partners, a firm in Crosswicks, NJ specializing in research, documentation and planning for historic sites. She is currently engaged as a consultant to Preservation New Jersey working on superstorm Sandy-related historic preservation activities, including providing assistance and funding information to communities whose historic resources were adversely affected by superstorm Sandy, and facilitating public involvement with federal and state agencies assisting with Sandy recovery programs. Ms. Kelly is also the co-creator of the New Jersey Women's Heritage Trail and is currently working as a consultant to the Alice Paul Institute on a project to redesign the New Jersey Women's History website, including the New Jersey Women's Heritage Trail sites.

Sarah Killinger is the compliance coordinator for Hurricane Sandy recovery projects for the Northeast Region of the National Park Service; she previously worked on compliance for the regional Line Item Construction program. Prior to joining the National Park Service, she worked as a liaison to the Army from the Advisory Council on Historic Preservation. Ms. Killinger has a B.A. in History and American Studies from Saint Olaf College and a M.A. from the University of Delaware in Urban Affairs and Public Policy with a specialization in Historic Preservation.

Mary D. Krugman, JD, MSHP, is President and Principal Preservation Specialist of Mary Delaney Krugman Associates, Inc. (MDKA), Historic Preservation Consultants, Montclair, NJ, founded in 1995. She holds a M.S. in Historic Preservation from Columbia University's Graduate School of Architecture, Planning, and Preservation, and a Juris Doctor degree from the Columbus School of Law, Catholic University of America. She specializes in architectural history, design consultations for compliance with the SOI Standards, and regulatory compliance for historic properties. She served as Historic Preservation Specialist with FEMA in Louisiana after Hurricane Rita (2006) and in NJ after Super Storm Sandy (2012-2013).



Cate Litvack became president of the Advocates for NJ History in January 2013 after serving for seven years as the first executive director of the Crossroads of the American Revolution Association. Ms. Litvack is an active land preservationist and a former chairman and trustee of the D&R Greenway Land Trust. She is a founder of the Princeton Area Community Foundation and a founder and former president of The Princeton-Pettoranello Sister City Foundation, for which she was awarded the Cavaliere Order of Merit of the Republic of Italy. Ms. Litvack has extensive marketing experience gained as a partner in Kea Wines, as vice president of marketing for govONE Solutions, LLP in New York and as vice president of J&M Advertising in Princeton.

Jeanette Lloyd is one of the founding members of the ten year old Beach Haven Historic Preservation Committee and is serving as the current Chair of the Committee. She is a retired grade school teacher of 44 years, having spent the last ten of those years teaching teachers how to teach. Ms. Lloyd also serves on the Board of Trustees for the Long Beach Island Museum, the Maritime Museum and the Beach Haven Public Library. The Beach Haven Committee has become the pioneer leaders in reclaiming its historic district following the disastrous effects of Superstorm Sandy.

Morgan MacKenzie, MA, RPA, holds a B.S. in Anthropology from Southern Connecticut State University and an M.A. in Maritime Archaeology from East Carolina University. Secretary of the Interior Qualified in Historic and Maritime Archaeology, Morgan is a Registered Professional Archaeologist and has worked on projects in the Mid-Atlantic, New England, Pacific Northwest, as well as internationally.

Laura Mandala is head of Mandala Research, one of the leading travel and tourism research firms in the world. She spends considerable time evaluating important emerging developments and that help destinations and travel companies make the right decisions to attract the right travelers. Appointed by the U.S. Department of Commerce Secretary to serve on the Travel and Tourism Advisory Board, Ms. Mandala has been providing input on the country's National Travel and Tourism Strategy. She has worked extensively with the U.S. Department of Commerce, and has conducted national studies for resorts, hotels, shopping malls, and

destinations, as well as multi-country brand equity and consumer tracking studies in over 25 international markets. She received her B.A. and M.A. in sociology from DePaul University and is receiving her Ph.D. from Northwestern University.

Katherine Marcopul is the Supervising Historic Preservation Specialist at the NJ Historic Preservation Office, and supervises its regulatory section. She has worked at the NJHPO since 1998 where she has supervised the National Register and Community Assistance section of the NJHPO, reviewed projects for impacts to archaeological resources under federal and state law, helped to organize trainings, conferences, and workshops for both professional and public audiences, assisted in the development of New Jersey's most recent Statewide Comprehensive Historic Preservation Plan, and coordinated with other NJDEP programs to ensure consideration of historic and archaeological resources in various program areas. Ms. Marcopul earned a Ph.D. and M.A. in Anthropology with a concentration in Archaeology from Temple University, and a B.A. in Anthropology with a concentration in Archaeology from Indiana University of Pennsylvania.

Michael Mariano is a Senior Economist & Director of Geospatial Analytics with Tourism Economics and Oxford Economics. Michael has over 13 years of experience in economic and statistical consulting, and his research interests include economic and fiscal impact modeling, econometric forecasting, retail market studies, and GIS (Geographic Information Systems) modeling and geospatial analytics. He has worked on economic impact studies for a variety of arts, culture, entertainment, and amusement clients. Prior to joining Tourism Economics, Michael was Managing Director of Geospatial Analytics and GIS Solutions at Econsult Corporation, an economic consulting firm based in Philadelphia. Mr. Mariano received a B.S. in economics and marketing from the Wharton School and a M.S. in Urban Spatial Analytics from The University of Pennsylvania.

Michelle McDonald, Ph.D. is Associate Professor of History at Richard Stockton College. She teaches in both the college's undergraduate History and Master's in American Studies programs, and has planned and organized several programs for faculty development. She has taught and published in early American history, Atlantic history, and material culture. She was the pedagogical coordinator for



Greater Egg Harbor Regional School District's 2007-2010 TAH grant, the One Nation, Many Americans Project and co-director of Revolution to the Republic: Philadelphia's Place in Early America for 2008, 2010 and 2011. Both programs encouraged participants to explore using historic sites and museums as classroom teaching tools. She holds a Ph.D. in American History from the University of Michigan, and an M.A. in Museum Studies from The George Washington University.

Jamie McGuane is a Work Leader for the Olmsted Center for Landscape Preservation, the cultural landscape program in the Northeast Region of the National Park Service. He helps to provide technical assistance on cultural landscape issues; performs comprehensive condition assessments of landscape features; organizes and coordinates field projects that promote the stabilization and preservation of important landscapes; and assists in the coordination of education and training programs for National Park Service staff to become skilled preservation maintenance professionals; and helps with the management of the Historic Plant Nursery Program. Mr. McGuane is a certified Arborist as well as a certified tree risk assessor through the International Society of Arboriculture and practices Preservation Arboriculture in the National Park Service.

Robert Melvin, AICP/PP, is a licensed professional planner in New Jersey and Principal of Group Melvin Design. Under Mr. Melvin's leadership, Group Melvin Design completed a Transfer of Development Rights plan based on neo-traditional design and sustainable principles for Woolwich Township. The plan is the first adopted under the statewide enabling legislation and the first such plan to receive Plan Endorsement from the State Planning Commission. In his previous position as Director of Planning for Washington Township in Mercer County, Mr. Melvin was responsible for planning and facilitating implementation of Washington Town Center, cited as the first "New Town" in the state since WWII to be fully designed and positioned for development by a municipality in partnership with the development community. Mr. Melvin holds a M.A. in City Planning and Urban Design from the University of Pennsylvania.

Courtenay Mercer, *AICP/PP*, is the Principal of Mercer Planning Associates, which provides comprehensive planning services to public sector clients seeking to implement smart growth planning principles. She has substantial public sector experience that has enabled her to provide assistance to diverse and complex planning projects, and to work with all types of communities. Her project experience ranges from rural conservation planning to urban redevelopment. In addition to public and private sector planning work, Ms. Mercer is involved with many civic and volunteer efforts, including public community boards and non-profit organizations. She has a Masters of City and Regional Planning from the Bloustein School at Rutgers University.



Nicole (Nikki) Cooper Minnichbach has over 20 years of Cultural Resource Management experience, 15 in the Private Sector and ten with the US Army Corps of Engineers. She received her BA in Anthropology from Bucknell University and her MSc from the University of Montana, Missoula. Although specialized in Plain Indian material culture, she has experience with maritime archaeology, forensic anthropology, historic archaeology and Native American Traditions. She has worked on various projects in the Rocky Mountains, Mid-Atlantic, Mid-West, Northeast, Southeast and Gulf Coastal regions as well. She was ceremonially adopted into the Crow Nation in 1991 and maintains her relationship with her Crow family today.



Marlana Moore is a 2013 Summa Cum Laude graduate of Rutgers University with a scholarly focus on architectural history and historic preservation. Her senior thesis, which received high honors, was entitled “Hope VI: the Architecture, Planning and Policy of Public Housing Since 1993.” She is currently working at The Collaborative: A Center for Community-Based Learning, Service & Public Scholarship, based at Rutgers University, where she coordinates the Community Research Assistant Program, facilitating student research projects with community organizations.



Christopher PMD Morris, *MSc*, has 17 years of experience working on professional archaeological projects and 13 years of experience directing projects in the United States and Caribbean. He has been working on and leading terrestrial and

maritime cultural resource management projects in the Great Lakes, Northeast, Southeast, Gulf-Coast, and Mid-Atlantic regions of the US, Southwest, Southeast, and North Sea regions of England, as well as the Eastern Yucatan Peninsula of Mexico, Isthmus of Panama, and several Caribbean Islands. Mr. Morris received his B.S. in Communications and Archaeology from Cornell University and M.Sc. in Maritime Archeology from the University of Southampton, UK.

Robert Newell is the Principal of Robert Newell Lighting Design and serves as a member of the International Association of Lighting Designers and the Illuminating Engineering Society of North America. He is an experienced lighting designer with an in-depth understanding of lighting design principals, techniques, and applications. He is frequently a guest lecturer on a variety of lighting design subjects for the Illuminating Engineering Society and design programs at local Universities. Mr. Newell is currently a staff instructor at the Philips Application Center in Somerset, New Jersey. He is active in planning and design in Westfield, New Jersey and is Vice-Chairman of the Westfield Planning Board.

Karl J. Niederer is currently assisting the New Jersey Historic Preservation Office as a facilitator on several projects, including the launch of a \$13 million grant program to provide recovery assistance to owners of historic properties damaged by Hurricane Sandy, and strategic relationship-building among the historical agencies and institutions in the state. He previously served as director of the New Jersey Division of Archives and Records Management in the Department of State (1994-2012). Richard Waldron, Maxine Lurie, and Niederer co-founded the CAPES program in 1989.

Cheryl Sams O'Neill is a historical landscape architect with the Northeast Regional Office of the National Park Service. She has a background of studying historic landscapes and documenting their significance and integrity. Ms. O'Neill has developed protocols for integrating diverse cultural resource databases utilizing GIS software. Currently, she works as a resource planning specialist in the Resource, Planning and Compliance Division, specializing in complying with the National Historic Preservation Act.

Frederic C. Pachman, *MLS*, serves as Coordinator of the Caucus Archival Projects Evaluation Service program, which, over the past twenty-five years, has provided archival consulting services to more than 450 libraries, churches, historical societies and organizations across New Jersey. He is a life member of historical organizations in the Garden State and currently serves as President of the New Jersey Scout Museum. He is Library Director of the Medical Library at Monmouth Medical Center.

Adam Perle is a non-profit executive professional committed to the advancement of the Princeton Regional Chamber of Commerce and where he speaks for local businesses in an effort to provide the opportunity for economic growth. He specializes in non-profit management, fundraising, grant writing, marketing and branding, social media, information technology, and special event planning.

Laura M. Poll has been the Librarian/Archivist at the Monmouth County Historical Association in Freehold, New Jersey since 2008. Previously, she was their Project Archivist and Assistant Librarian/Photograph Archivist. Prior to that she was the Registrar of Collections at Historic Allaire Village (Farmingdale, N.J.). Ms. Poll is a consultant for the Mid-Atlantic Regional Archives Conference's New Jersey Caucus Archival Projects Evaluation Service (CAPES), program coordinator for the New Jersey Studies Academic Alliance, member of the New Jersey Library Association, and judge for the regional contests at National History Day. She earned her M.L.I.S. at Rutgers.

Kevin Rabago A 24-year veteran of municipal government, Kevin has worked in the City of Bridgeton in a number of capacities since 1990. Currently the Director of Development & Planning and Special Assistant to the Mayor, he has served variously as Community Development Project Manager & Technical Writer, UEZ Coordinator, Supervisor of Housing & Inspections, and Parking Enforcement Officer. From 2006 until 2012, he was the Bridgeton Historic District Commission's Administrative Officer and is currently the administration's liaison to the Commission. Experience derived from his many roles through several Bridgeton administrations provide him with a unique perspective on Bridgeton's Historic New Frontier District and its relationship to the community at large.

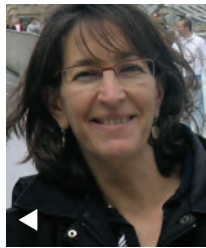


Michele Racioppi holds an M.A. in Art History with a focus on Cultural Heritage and Preservation Studies and a B.A. in Political Science and Art History, both from Rutgers University. Her Master's Thesis was entitled "The Preservation of American Youth Summer Camps." Ms. Racioppi has worked for a range of non-profits, including The Fund for the Public Interest and Housing and Neighborhood Development Services (HANDS), and is currently serving as the Program Assistant for the New Jersey Historic Trust.

Annabelle Radcliffe-Trenner, *AIA, RIBA, LEED AP, NCARB*, is the founding Principal of Historic Building Architects, LLC, Trenton, NJ, an award winning firm specializing in historic public buildings. She was trained as a preservation architect in Scotland and then at ICCROM in Rome, before moving to the United States in 1988. She has a keen interest in the long-term planning for historic buildings. She's especially interested in the ethics of intervention and adaptive use of existing buildings. The use of innovative technology and material science are key to the successful professional team collaboration that is the foundation of her work. Eager to educate the public, she lectures on preservation issues internationally. Ms. Radcliffe-Trenner is a licensed architect in the U.S. and Europe.

Lynn Rakos, *MA, RPA*, has been an archaeologist for two decades with the US Army Corps of Engineers, New York District. Prior to that time she worked for ten years in New Jersey and surrounding region for private cultural resource management firms and Rutgers University. She holds a B.A. and an M.A. in Anthropology from Rutgers University and is a Registered Professional Archaeologist. She is active on the boards of various professional organizations including Professional Archaeologists of New York City and the Society for Industrial Archeology. Her work at the Corps has included ensuring Section 106 compliance on navigation, flood damage reduction, beach renourishment and environmental restoration projects. While not trained as a maritime archaeologist Ms. Rakos has extensive experience addressing underwater cultural resources.

Nina Rappaport is an architectural critic, curator, and educator. As publications director at Yale's School of Architecture she is the editor of the biannual publication *Constructs*, the exhibition catalogs, and the school's studio book series. She is a founder of Docomomo-NY/Tri-State and its current Vice President where she initiated numerous programs, panel discussions, and advocacy projects including the Bell Labs Charrette and the Manhattan Modern Map. Ms. Rappaport is the director of the Vertical Urban Factory project, whose exhibit has traveled to New York, Toronto, and Detroit. Recently she co-edited the book, Ezra Stoller: Photographer and authored, *Support and Resist: Structural Engineers and Design Innovation*.



Rev. David Rivera, a native of Camden, New Jersey is currently stationed in Bridgeton at the Parish of the Holy Cross. A B.A. in philosophy from the Saint Charles Borromeo Seminary led to a sacred theology degree from Saint Thomas and a licentiate in moral theology from the Pontifical University of the Holy Cross in Rome. Growing up in one of the poorest and most dangerous cities in the country has made Father Rivera sensitive to the link between urban and spiritual transformation, and fostered the hope that churches may play a leadership role in motivating their congregations to work with local government and businesses in community rebuilding. He is currently workshop liaison between CHABA and Holy Cross's largely Spanish-speaking faithful.



Carlos Rodriguez, PP, AICP, is a Princeton-based urban designer, professional planner, writer and educator. His planning practice represents local governments, private development clients and civic groups involved in (re)development and preservation projects of merit. He also teaches a graduate planning studio, recently focusing on Sandy-afflicted communities at the Bloustein School at Rutgers. He has worked in senior management positions in the private, public and non-profit sectors, is a charter member of the Congress for the New Urbanism, Past President of APA-NJ, past board member of Preservation New Jersey and a current board member of the Society for American City and Regional Planning History.



Robyn Magalit Rodriguez, Ph.D., earned her Ph.D. in Sociology at the University of California, Berkeley. Her research is broadly concerned with understanding how processes of globalization, particularly international migration, impact the societies that migrants leave and the societies to which they move. Her book, "Migrants for Export: How the Philippines Brokers Labor to the World" (University of



Minnesota Press, 2010), won an Honorable Mention for Best Book in Social Science by the Association for Asian American Studies. Currently, she is completing "In Lady Liberty's Shadow: Race and Immigration in Post-9/11 New Jersey," to be published by Rutgers University Press in 2015. She intends to incorporate the Bridgeton experience, with its unusual folding-in of the politics of preservation, as a final chapter.

Bernadette M. Rogoff has been Curator of Museum Collections at Monmouth County Historical Association for more than 20 years. She has produced over 40 changing exhibitions and oversees 5 historic houses, 5 changing exhibition galleries, and a collection of more than 30,000 objects and artifacts. In 2013, Mrs. Rogoff completed years of research on portrait artist Micah Williams with an exhibition and catalogue, the first to examine the life and work of this exceptional artist. Mrs. Rogoff has lectured at Princeton University, and the American Folk Art Museum. She holds a B.A. in Fine Arts and History from The College of Mount Saint Vincent and a M.A. in Decorative Arts from The Cooper-Hewitt Museum/Parsons School of Design.

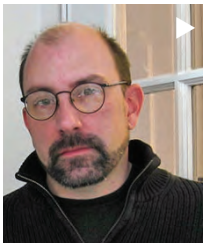
Gerard P. Scharfenberger, Ph.D., has been serving on the Township Committee since 2005. Dr. Scharfenberger served as Mayor from 2007 through 2009 and Deputy Mayor in 2009 and 2006. Dr. Scharfenberger has been a member of the Landmarks Commission since 1996. Dr. Scharfenberger, who has lived in Middletown for more than 15 years, is employed as Director of the Office For Planning Advocacy for the State of New Jersey. He holds a M.A. from Hunter College and received his Ph.D. in 2005 from the CUNY Graduate Center with a dual focus on historical archeology and cultural landscape studies. He currently is a member of the adjunct faculty of Monmouth University in West Long Branch.

Janet L. Sheridan, MA Historic Preservation, is a cultural landscape historian and historic preservation consultant in Salem County who specializes in historic building and landscape research in southwestern New Jersey. She holds a M.A. in historic preservation from the University of Delaware and is serving on the steering committee for the May 7-11, 2014 Vernacular Architecture Forum annual conference taking place in southern New Jersey. Her work includes cultural resource survey, National Register listings, and architectural drawings and photography.

Chris Sturm directs New Jersey Future’s policy development and advocacy across a host of issues including state and regional planning, sustainable infrastructure, resilient development and incentives for compact, equitable development. She spearheaded the adoption of legislation authorizing better cluster development tools, and is frequently quoted in the media. Chris serves as a trustee for the Council on Affordable Housing and the Environment, and is a member of the Clean Water Council of New Jersey and the NJ Climate Adaptation Alliance. Ms. Sturm holds a M.A. in Public Affairs from the Woodrow Wilson School at Princeton University, where she concentrated in Urban and Regional Planning.

Mark Texel serves as Director of the State Park Service, within the NJ Division of Parks and Forestry. He has oversight for all activities within the state’s 39 parks, 57 historic sites, 11 state forests, and 3 marinas encompassing over 440,000 acres of preserved park lands. He previously served as Director of the Historic Sites Division for the Morris County Park Commission from 2005–2012 after serving as Manager for six years. A native of Colorado, Mr. Texel began working in parks and living history when he was 14, starting as a costumed living history interpreter and later supervising programs at a ranching heritage site, historical society and historical museum. He holds B.A. in American history and music from the University of Colorado, and graduated Drew University’s Certificate in Historic Preservation program.

Raymond E. Tubby earned his M.A. in Maritime Studies from East Carolina University in 2000, his B.S. from the University of Maryland in 1986, and a Geographic Information Systems post-Baccalaureate certificate from Penn State in 2012. He has over 20 years of experience as a professional maritime archaeologist and is proficient in all aspects of underwater archaeology including remote sensing survey, data analysis, historic research, archaeological diving and site documentation. His research specialties include 18th–19th century New World ship construction, Civil War wreck sites, and small vernacular craft construction. Mr. Tubby has participated on archaeological projects across the Southeast, Southwest, Mid-Atlantic, Northeast, Gulf Coast, and the West Indies.



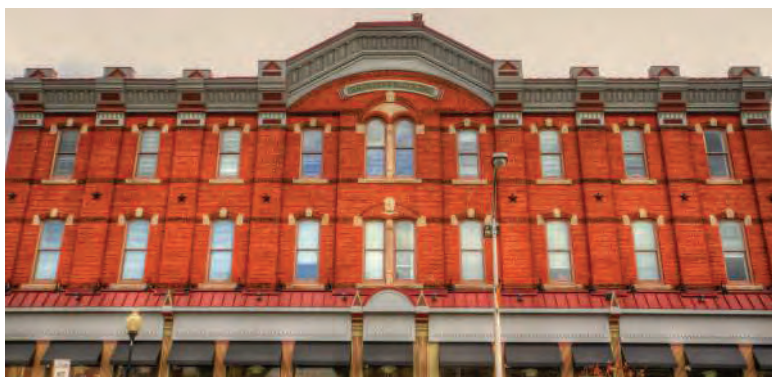
David Uschold, a historical landscape architect for the National Park Service Northeast Region, has been working in historic preservation for over twenty years. After ten years with the NPS Northeast Region’s Olmsted Center for Landscape Preservation, he currently serves as the Regional Section 106 Coordinator (National Historic Preservation Act) and as the compliance manager for the region’s construction program. Mr. Uschold education includes undergraduate degrees in architecture and landscape architecture as well as a master’s of landscape architecture concentrating in historic landscape preservation.

Linda B. Weber, PP, AICP, is a professional planner with 25 years of experience in municipal planning and a specialty in urban design and historic preservation. Her work includes the Lambertville Historic Preservation Master Plan and Historic District Guidelines, as well as numerous other guidelines and presentations in NJ and PA. Since Hurricane Sandy, Ms. Weber’s focus has turned to disaster recovery and resiliency, of which historic preservation continues to be a critical issue. She is the Program Director of the NJ Resiliency Network at the Sustainability Institute in The College of New Jersey.

Nicholas J. Wood manages the Arts & History regrant programs for the Ocean County Cultural & Heritage Commission and provides technical assistance to area nonprofits. Prior to work with the Commission, Mr. Wood was the Folklife Program Coordinator at the Tuckerton Seaport—a multi-faceted position with responsibilities ranging from public programming to collections care to development. He currently serves as the Vice President of the New Jersey Association of Museums and is an appointed member of the Tuckerton Landmarks Commission.

Milton Lanier “Beau” Woodrum, Jr., AIA, LEED AP, is a registered architect with Platt Byard Dover White Architects, LLP. He is a native of Virginia who received his BFA in Painting and Printmaking from Virginia Commonwealth University in 1991. He then worked for over a decade in the building trades including historic restoration and set building or theater and film. He returned to school at Virginia Tech, earning the degree of M. Arch. in 2006, and relocated with his family to NYC after accepting a position with Platt Byard Dovell White.

RPM is proud to create homes that preserve New Jersey's heritage.



RPM DEVELOPMENT GROUP

For more information, please contact
Kevin Kavanaugh, VP of Development • kkavanaugh@rpmdev.com



ENDURING ARCHITECTURE | LIVABLE PLACES | SUSTAINABLE ENVIRONMENTS



Cracker Factory, Trenton NJ



Golden Swan, Trenton NJ



Garretson Farm, Fair Lawn, NJ

Clarke Caton Hintz

Architecture
Planning
Landscape Architecture



clarkecatonhintz.com
609.883.8383



Old-World Skills, 21st Century Innovation

Trinity Church,
Boston, MA

Our award-winning, expert builders combine old-world craftsmanship with the innovative methods of a leading construction manager. With over 50 complex landmark projects — state capitols to historic chapels — we renew history.



CONSIGLI
Est. 1905

To learn more, scan here.



CONSIGLI.COM



**CROSSROADS of the
AMERICAN
REVOLUTION**
NATIONAL HERITAGE AREA
www.RevolutionaryNJ.org

Discover Revolutionary New Jersey

ESCA SPECIAL CLEAN
est. 1984 1330 Industry Road, Hatfield, PA 19440

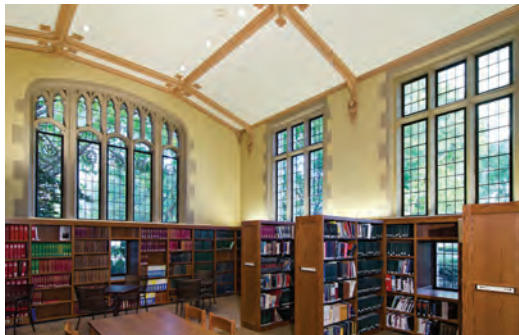
**No Harm Cleaning
Chemical-Free
Eco-Friendly**

escaspecialclean.com (800) 699-ESCA



HMR ARCHITECTS

Architecture • Planning • Interiors • Historic Preservation



609-452-1070

www.hmr-architects.com

MUSEUMRAILS™ Modular Reader Rail System



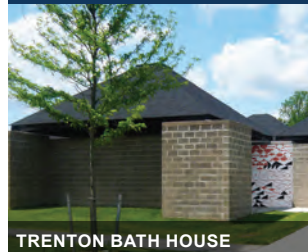
- Flexible, Reusable System
- Easily Changeable Graphics
- Quickly Reconfigured
- Interpretive Space and Separation

Monmouth County
Historical Association
Freehold, New Jersey

MUSEUMRAILS.COM
888-672-1890



SANDY HOOK QUARTERS



TRENTON BATH HOUSE



VOORHEES CHAPEL RUTGERS



GLASSBORO TRAIN STATION

- DESIGN-BUILD
- HISTORIC
- EDUCATION
- SUSTAINABILITY
- COMMUNITY
- COMMERCIAL

AWARD-WINNING EXCELLENCE IN
DESIGN AND CONSTRUCTION SINCE 1990

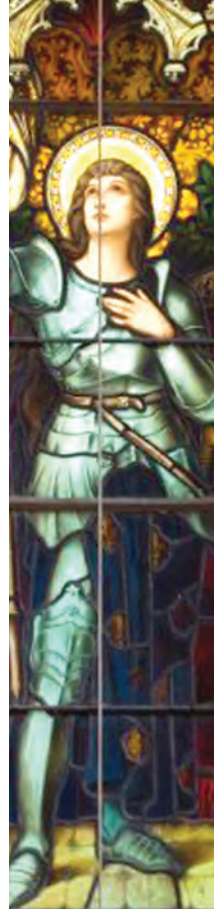
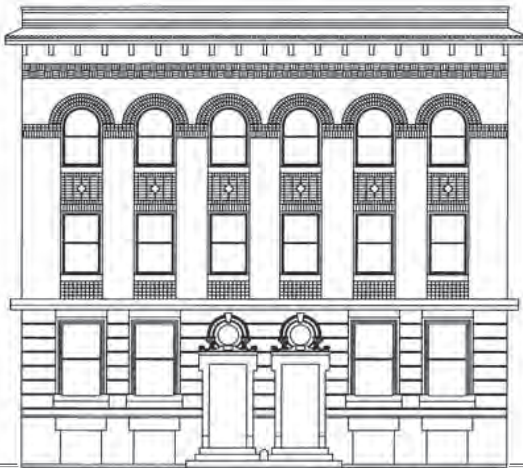
WUASSOCIATES.COM
INFO@WUASSOCIATES.COM | 856-857-1639

HUNTER RESEARCH HISTORICAL RESOURCE CONSULTANTS

offering services in:

Historical Research • Archaeological Investigations
Architectural Studies • Preservation Planning
Historic Exhibits • Educational Outreach

Hunter Research, Inc.
120 West State Street, Trenton, NJ 08608-1102
phone: 609.695.0122 fax: 609.695.0147
email: hri@hunterresearch.com
website: www.hunterresearch.com



RESTORATION *and* NEW STAINED GLASS

Chapels • public buildings
colleges and universities
private schools
religious institutions

Artists and craftsmen since 1857

Excellence through experience

See the Lamb Studios archives
at the Library of Congress
www.loc.gov

THE
J&R LAMB
STUDIOS

877-700-LAMB
www.lambstudios.com



lwdmr

ARCHITECTS



lwdmr.com

LINDEMOM WINKELMANN DEUPREE
MARTIN RUSSELL & ASSOCIATES P.C.

140 BAY STREET, SUITE 4
JERSEY CITY, NJ 07302
(T) 201 333 5017

224 NORTH HIGH STREET
MILLVILLE, NJ 08332
(T) 856 293 9564

MAIL@LWDMR.COM



ARCHITECTURE ■ ENGINEERING ■ URBAN DESIGN

Satisfaction by Design



Engineering

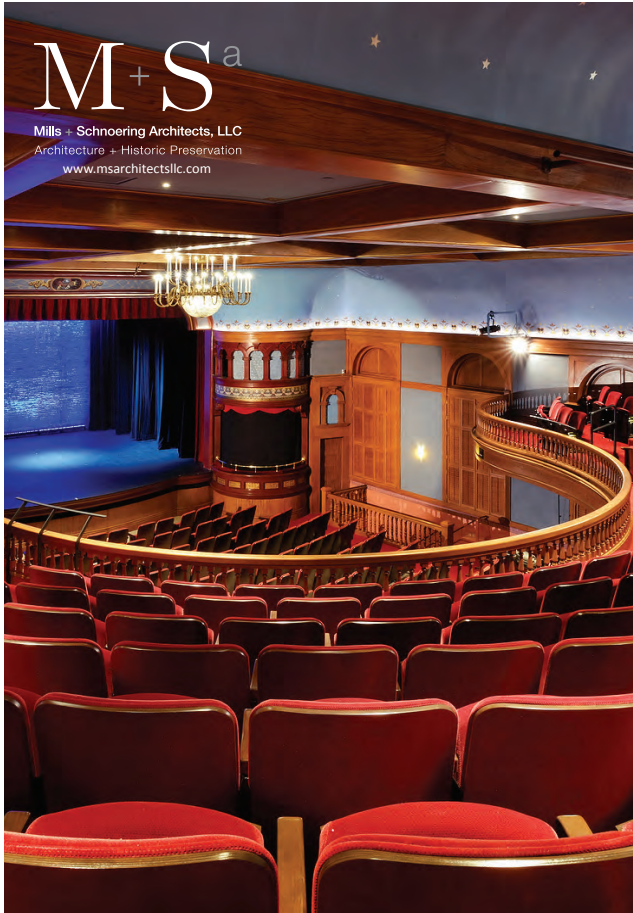
Surveying

Planning

Landscape Architecture

KELLER & KIRKPATRICK

301 Gibraltar Drive, Suite 2A, Morris Plains, NJ 07950
Tel: (973)377-8500 Fax: (973)887-0925



**Proud to sponsor the
 2014 NJ History &
 Historic Preservation Conference**



A full service governmental affairs firm based in historic Trenton representing clients for more than thirty years



**EXPERT FINANCING FOR
 MULTIFAMILY, SINGLE FAMILY &
 SUPPORTIVE HOUSING PROJECTS**



**OVER 40 YEARS' FINANCING EXPERIENCE
 NJ LOW INCOME HOUSING TAX CREDIT PROGRAM ADMINISTRATOR
 MULTIFAMILY POOLED FINANCING ISSUER
 HOLDS A BALANCE SHEET OF \$4+ BILLION**

WWW.NJHOUSING.GOV · 1-800-NJ-HOUSE



Historic Preservation Planning
 Cultural Resource Management
 Historic Architecture & Design

2 N. Union Avenue • P.O. Box 1726
 Cranford, NJ 07016 • 973-746-4911
 www.chhistoricalarchitects.com

Thomas B. Connolly, A.I.A. • Margaret M. Hickey, R.A.



Richard Grubb & Associates, Inc.
 Cultural Resource Consultants



Services include:

- 🏠 Historical Research
- 🏠 Architectural Surveys
- 🏠 Investment Tax Credits
- 🏠 Preservation Planning
- 🏠 HABS/HAER Services
- 🏠 Historic Structures Reports
- 🏠 Archaeological Investigations
- 🏠 Exhibits and Historic Interpretation
- 🏠 Public Relations and Educational Programs
- 🏠 National & State Register Nominations

Specializing in Historic Preservation

259 Prospect Plains Road • Bldg D • Cranbury • NJ • 08512
 609-655-0692 • Fax 609-655-3050 • mail@richardgrubb.com
 www.richardgrubb.com

*With appreciation to the
 NJ Historic Trust,
 NJ Historic Preservation Office,
 NJ Historical Commission,
 and Advocates for NJ History
 for presenting the 2014
 “Celebrating Past, Present & Future”
 Conference and in honor of
 New Jersey’s 350th Anniversary*



Dr. and Mrs. Joseph E. Salvatore



MERCER
PLANNING ASSOCIATES

344 Grove Street
Suite 256
Jersey City, NJ 07302
Tel • (732) 354-1316
Fax • (732) 289-6131
info@mercerplanning.com
www.mercerplanning.com

- Comprehensive Planning & Project Management
 - Public Engagement
 - Intergovernmental Coordination
 - Transfer of Development Rights
- DBE/WBE Certified*

Michelle K. Perez
Northeast Office
732.556.6411



GLADDING, McBEAN

FORD3
ARCHITECTS, LLC

- Architecture
- Historic Preservation
- Adaptive Reuse
- New Construction
- Sustainability
- Interior Design

32 Nassau Street Princeton, New Jersey 08542
609.924.0043 www.ford3.com

BREGENZER BROTHERS

SLATE. COPPER. MASONRY
HISTORIC RESTORATION AND REPAIR

OFFICE: 609.466.1296

www.bregenzerbrothers.com
The Slate and Copper Roofing Experts since 1919

Historic Preservation Planning through Design and Construction Administration

MCA

Michael Calafati Architect, LLC

609-884-4922

NJ RA # AI-09029

www.calafati.com

Certificate of Authorization # AC-845 Exp. 01/2016

Equitable Trust Building, Atlantic City, NJ



American Planning Association
New Jersey Chapter

Making Great Communities Happen

The New Jersey Chapter of the American Planning Association is proud to support the 2014 NJ History and Historic Preservation Conference

Visit us Online: www.NJPlanning.org

*Best Wishes
 for a successful
 2014 History and
 Historic Preservation
 Conference and
 Closing Reception
 from the
 New Jersey
 Historic Trust
 Board of Trustees*

A Proud Sponsor of the

2014 NJ HISTORY AND
 HISTORIC PRESERVATION
 CONFERENCE



Newark Liberty International Airport



Thomas Edison National Historical Park



Hoboken Ferry Terminal



**ARCHITECTURE
 HISTORIC PRESERVATION
 INTERIOR DESIGN
 URBAN DESIGN AND PLANNING**

NEW YORK, NY

BEYERBLINDERBELLE.COM

WASHINGTON, DC



General Contracting
www.zinnoconstruction.com

PO Box 333 Vernon, NJ 07462

Vincent Zinno Jr.
vzinno@zinnoconstruction.com

ph: 973-827-0039
fax: 973-764-3999

WILLIAM NEUMANN P H O T O G R A P H Y

96 CARMITA AVE. • RUTHERFORD, NEW JERSEY 07070 • (201)939-0370

*A historic preservationist who understands
your need for professional photography!*

People, Properties and Projects...



www.NeumannPhoto.com
fotogbill@aol.com



PE GROUP

Princeton Engineering Group, LLC
Consulting Engineers
100A Forrestal Road
Princeton, NJ 08540
Tel: (609) 243-9286
Fax: (609) 243-9287
E-mail: contact@pegllc.com
Web: WWW.PEGLLC.COM

*Making
Historic
Places
Comfortable.*

HVAC, Electrical, Plumbing and Fire Protection
Engineering Design Services

120 W Main St (9 Rt 9)
Tuckerton, NJ 08087
www.tuckertonseaport.org

E C L E C T I C ARCHITECTURE LLC

FINE DESIGN & HISTORIC PRESERVATION

2011, 2012 AND 2013 NEW JERSEY
STATE HISTORIC PRESERVATION AWARD

www.eclecticiture.com
info@eclecticiture.com

Phillipsburg, New Jersey
Phone: 908-387-8630



Give Heritage Tourism a Brake, Buy Your License Plate Today!

Call Motor Vehicle Services at 888.486.3339
to order your plate.

For more information, visit:

WWW.NJHT.ORG



Save the Date

2015 NJ HISTORY AND HISTORIC PRESERVATION CONFERENCE

June 4, 2015

10 MOST ENDANGERED HISTORIC SITES IN NEW JERSEY 2014



The New Jersey Palisades, *Bergen and Hudson Counties*



Asher Woolman Homestead, *Westampton Township, Burlington County*



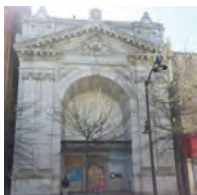
Community of Fortescue, *Downe Township, Cumberland County*



Maplewood Post Office, *Maplewood Township, Essex County*



Church of Saint Michael the Archangel, *Union City, Hudson County*



Giordano Diner, *Lawrence Township, Mercer County*



Trenton Savings Fund Society, *City of Trenton, Mercer County*



Suydam House, *Piscataway Township, Middlesex County*



Romer Shoal Light, *Highlands Borough, Monmouth County*

Horton Mansion, *Town of Newton, Sussex County*





Vision Planning
 Design & Adaptive Use
 Non-Destructive Testing
 Materials Conservation
 Bidding & Construction
 Administration
 Grant Funding Applications
 Preservation Advocacy

www.hba-llc.com
HISTORIC BUILDING ARCHITECTS, LLC

Research—Writing—Oral History—Exhibitions—Grant Proposals—Planning

Howard L. Green
 3 Grant Avenue
 Highland Park, NJ 08904

732.247.2578
hlgreen@optonline.net
www.publichistorypartners.com

**Public History
 Partners**

Preservation Partners

Deborah Marquis Kelly & Ellen Freedman Schultz
Historic Preservation Consultants

*Projects include: New Jersey Women's Heritage Trail;
 Assessment of State Historical Marker Programs;
 National Register nominations; and architectural surveys.*

P.O. Box 506, Crosswicks, NJ 08515
 609-291-9351 • kellybd1@verizon.net



**Donna Ann Harris
 Principal**

*Historic Preservation
 Heritage Tourism
 Downtown Revitalization
 Nonprofit Management*

422 South Camac Street, Philadelphia, PA. 19147
 Phone 215-546-1988 Cell 267-251-5444
donna@heritageconsultinginc.com
www.heritageconsultinginc.com



Mary Delaney Krugman Associates, Inc.
Historic Preservation Consultants
 62 Myrtle Avenue
 Montclair, NJ 07042
 973.746.2810

MDKA
www.mdka.com



Makers of **ecologic® Mortar**

For Ready to go Replication Mortars
 Historic Mortar Analysis Reports

Repoint - Build - Stucco - Plaster with NO Harmful Portland Cement
 215.536.6706

Brock Giordano, RPA
 Archaeologist

973.576.9699 • bgjordano@dewberry.com

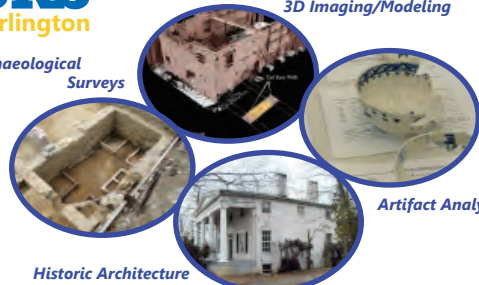
ARCHITECTS ENGINEERS CONSULTANTS
www.dewberry.com



**URS
 Burlington**

Archaeological
 Surveys

3D Imaging/Modeling



Artifact Analysis

Historic Architecture

www.urs-burlington.com



AIA New Jersey

The New Jersey Society of Architects
A Chapter and Region of the American Institute of Architects

SAVE THE DATE...

2014 NJ DESIGN CONFERENCE
OCTOBER 17 & 18
Hanover Marriott, Hanover, NJ

www.aia-nj.org

new jersey 350

innovation • diversity • liberty

NEW JERSEY
Historical
COMMISSION

New Jersey is a state of INNOVATION, DIVERSITY AND LIBERTY



CELEBRATING 350 YEARS OF NEW JERSEY HISTORY IN 2014

TO FIND OUT MORE, VISIT
www.officialnj350.com



The State of New Jersey

new jersey 350
innovation • diversity • liberty

Photos (clockwise): Alice Paul, Library of Congress; Ellis Island, National Archives; Molly Pitcher at the Battle of Monmouth, Monmouth County Historical Association, Freehold NJ; Gift of Delphine B. O'Donnell, 1932; Scientists working on first transistor, Alcatel-Lucent/Bell Labs; Paul Robeson and members of Rutgers baseball team, Rutgers Special Collection and University Archives; John Phillip Holland, U.S. Navy.