



Child Protection and Permanency

Monthly Screening and Investigation Report March 2015

Allison Blake, Ph.D., L.S.W.
Commissioner

April 20, 2015



NEW JERSEY DEPARTMENT OF
CHILDREN AND FAMILIES

Table of Contents

Table 1: NJ State Central Registry Activity: Monthly Child Abuse and Neglect Hotline Calls, Intakes and Assignments to Child Protection & Permanency (CP&P) Offices

Chart 1: CP&P Annual Trends in Child Protection Services (CPS) Reports and Child Welfare Services (CWS) Referrals

Table 2: Assignments to CP&P Offices: CPS Reports and CWS Referrals

Table 3: Source of CPS Reports and CWS Referrals

Table 4: Monthly Count of CPS Reports and CWS Referrals Assigned to Counties

Table 5: Monthly Count of CPS Reports and CWS Referrals Assigned to CP&P Local Offices

Table 1: NJ State Central Registry Activity: Monthly Child Abuse and Neglect Hotline Calls, Intakes and Assignments to CP&P Offices^{1,2,7}

2014 - 2015	Hotline Call Activity				Intakes Recorded in NJ SPIRIT ^{6,8}												Assignments to CP&P Offices				
	Total Calls to SCR ³	Abandon Calls ⁴	Average Time to Answer (seconds)	Resulting NJS Intakes ⁵	CPS Reports		CWS Referrals		No Action Required (NAR)		Related Information (RI)		Information & Referral (I&R)		Information Only (IO)		CPS Reports		CWS Referrals		Total
					n	%	n	%	n	%	n	%	n	%	n	%	n	%	n	%	
March 2014	15,236	439	23	16,707	5,408	32.4%	1,585	9.5%	363	2.2%	4,257	25.5%	1,774	10.6%	3,320	19.9%	5,408	77.3%	1,586	22.7%	6,994
April 2014	14,056	405	21	15,642	5,052	32.3%	1,467	9.4%	400	2.6%	3,846	24.6%	1,676	10.7%	3,201	20.5%	5,049	77.5%	1,467	22.5%	6,516
May 2014	15,690	717	31	17,101	5,501	32.2%	1,635	9.6%	396	2.3%	4,444	26.0%	1,816	10.6%	3,309	19.3%	5,501	77.1%	1,635	22.9%	7,136
June 2014	13,809	465	27	15,171	4,796	31.6%	1,516	10.0%	402	2.6%	4,028	26.6%	1,625	10.7%	2,804	18.5%	4,796	76.0%	1,517	24.0%	6,313
July 2014	12,308	344	21	13,784	4,202	30.5%	1,247	9.0%	384	2.8%	3,758	27.3%	1,487	10.8%	2,706	19.6%	4,202	77.1%	1,247	22.9%	5,449
August 2014	11,306	277	17	12,610	3,629	28.8%	1,222	9.7%	331	2.6%	3,314	26.3%	1,321	10.5%	2,793	22.1%	3,629	74.8%	1,222	25.2%	4,851
September 2014	13,664	359	22	15,190	4,668	30.7%	1,496	9.8%	393	2.6%	3,949	26.0%	1,792	11.8%	2,892	19.0%	4,668	75.7%	1,498	24.3%	6,166
October 2014	15,268	435	26	16,868	5,510	32.7%	1,584	9.4%	555	3.3%	4,259	25.2%	1,946	11.5%	3,014	17.9%	5,509	77.6%	1,586	22.4%	7,095
November 2014	12,649	391	28	13,938	4,254	30.5%	1,416	10.2%	297	2.1%	3,895	27.9%	1,473	10.6%	2,603	18.7%	4,254	75.0%	1,416	25.0%	5,670
December 2014	13,289	468	29	14,588	4,511	30.9%	1,449	9.9%	303	2.1%	3,888	26.7%	1,620	11.1%	2,817	19.3%	4,509	75.7%	1,447	24.3%	5,956
January 2015	13,991	761	34	15,030	4,549	30.3%	1,390	9.2%	387	2.6%	3,939	26.2%	1,591	10.6%	3,174	21.1%	4,549	76.6%	1,391	23.4%	5,940
February 2015	12,881	537	35	14,010	4,573	32.6%	1,342	9.6%	418	3.0%	3,494	24.9%	1,516	10.8%	2,667	19.0%	4,574	77.3%	1,345	22.7%	5,919
March 2015	14,805	486	30	16,174	5,187	32.1%	1,580	9.8%	363	2.2%	4,021	24.9%	1,811	11.2%	3,212	19.9%	5,187	76.7%	1,580	23.3%	6,767
Monthly Average	13,766	468	26	15,139	4,757	31.4%	1,456	9.6%	384	2.5%	3,930	26.0%	1,650	10.9%	2,962	19.6%	4,757	76.6%	1,457	23.4%	6,213
Overall Total	178,952	6,084		196,813	61,840		18,929		4,992		51,092		21,448		38,512		61,835	76.6%	18,937	23.4%	80,772

¹ Comes from three distinct sources: (1) the Automatic Call Distribution (ACD) phone system; which keeps a count of the number of calls and call routing; (2) Monthly NJSpirit Intakes; which record decision making on calls received by hotline screeners, and (3) NJSpirit extracts of assigned CWS Referrals and CPS Reports.

² The number of Intakes, CPS Reports, and CWS Referrals are based on an extract from NJSpirit. Data extracted by the Office of Research, Evaluation, and Reporting on **April 14, 2015** includes all Intakes, CPS Reports, and CWS Referrals received from March 1, 2015 through March 31, 2015.

³ The number calls received through the ACD System that were directed to a screener from any call-in phone number.

⁴ The number of calls received through the ACD System that are abandoned either while waiting in queue or while ringing.

⁵ The number of Intakes entered in NJSpirit from the number of calls received.

⁶ The number of Intakes recorded in NJSpirit, by type of Intake. There is not a one-to-one relationship between an ACD call and an Intake; multiple calls to State Central Registry (SCR) may result in a single Intake, or one call may result in multiple Intakes.

⁷ Intake: The process of documenting: a report of alleged abuse or neglect of a child (CPS); a request for services on behalf of a child, or a referral of a child for services (CWS); a call in which the caller provides additional or clarifying information about a current service case or active investigation (RI); informing a caller of, or referring a caller to, services available from other private or public sources (I&R); a call that requires no action by CP&P (NAR); or a response to a simple inquiry (IO).

⁸ NJ SPIRIT: NJ Statewide Protection Investigation and Reporting Information Tool case management system

CP&P Annual Trends in CPS Reports and CWS Referrals

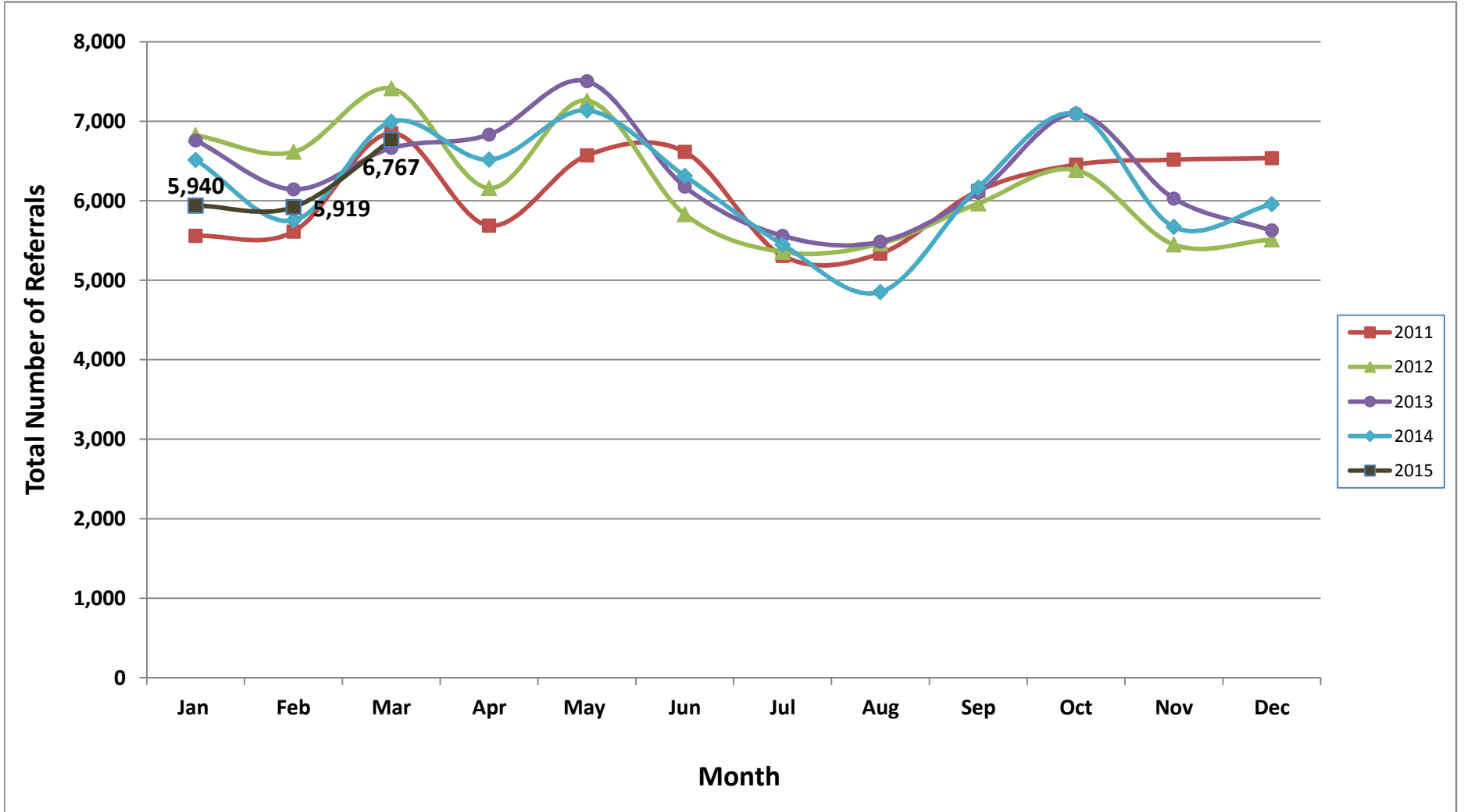


Table 2: Assignments to CP&P Offices: CPS Reports and CWS Referrals¹

Intake Date ³		CPS Reports ²	CWS Referrals ²	Total Assignments ²
2010	Jan 2010	5,154	963	6,117
	Feb 2010	4,446	804	5,250
	Mar 2010	6,314	1,147	7,461
	Apr 2010	5,465	1,040	6,505
	May 2010	5,797	1,177	6,974
	Jun 2010	5,734	1,157	6,891
	Jul 2010	4,270	1,017	5,287
	Aug 2010	4,110	1,028	5,138
	Sep 2010	4,922	1,012	5,934
	Oct 2010	5,105	1,136	6,241
	Nov 2010	4,842	1,028	5,870
	Dec 2010	4,472	909	5,381
	Total	60,631	12,418	73,049
2011	Jan 2011	4,616	942	5,558
	Feb 2011	4,672	939	5,611
	Mar 2011	5,701	1,148	6,849
	Apr 2011	4,682	1,005	5,687
	May 2011	5,362	1,207	6,569
	Jun 2011	5,299	1,315	6,614
	Jul 2011	4,200	1,108	5,308
	Aug 2011	4,170	1,166	5,336
	Sep 2011	4,872	1,253	6,125
	Oct 2011	5,322	1,132	6,454
	Nov 2011	5,220	1,296	6,516
	Dec 2011	5,363	1,173	6,536
	Total	59,479	13,684	73,163
2012	Jan 2012	5,530	1,294	6,824
	Feb 2012	5,358	1,255	6,613
	Mar 2012	5,985	1,428	7,413
	Apr 2012	4,899	1,259	6,158
	May 2012	5,874	1,385	7,259
	Jun 2012	4,640	1,190	5,830
	Jul 2012	4,254	1,101	5,355
	Aug 2012	4,325	1,135	5,460
	Sep 2012	4,769	1,196	5,965
	Oct 2012	5,178	1,207	6,385
	Nov 2012	4,310	1,138	5,448
	Dec 2012	4,394	1,116	5,510
	Total	59,516	14,704	74,220

Table 2: Assignments to CP&P Offices: CPS Reports and CWS Referrals¹

Intake Date ³		CPS Reports ²	CWS Referrals ²	Total Assignments ²
2013	Jan 2013	5,464	1,296	6,760
	Feb 2013	4,966	1,177	6,143
	Mar 2013	5,355	1,309	6,664
	Apr 2013	5,430	1,402	6,832
	May 2013	5,993	1,510	7,503
	Jun 2013	4,947	1,230	6,177
	Jul 2013	4,330	1,228	5,558
	Aug 2013	4,330	1,155	5,485
	Sep 2013	4,851	1,251	6,102
	Oct 2013	5,614	1,481	7,095
	Nov 2013	4,694	1,334	6,028
	Dec 2013	4,397	1,229	5,626
	Total	60,371	15,602	75,973
2014	Jan 2014	5,097	1,416	6,513
	Feb 2014	4,457	1,295	5,752
	Mar 2014	5,408	1,586	6,994
	Apr 2014	5,049	1,467	6,516
	May 2014	5,501	1,635	7,136
	Jun 2014	4,796	1,517	6,313
	Jul 2014	4,202	1,247	5,449
	Aug 2014	3,629	1,222	4,851
	Sep 2014	4,668	1,498	6,166
	Oct 2014	5,509	1,586	7,095
	Nov 2014	4,254	1,416	5,670
	Dec 2014	4,509	1,447	5,956
	Total	57,079	17,332	74,411
2015	Jan 2015	4,549	1,391	5,940
	Feb 2015	4,574	1,345	5,919
	Mar 2015	5,187	1,580	6,767
	Total	14,310	4,316	18,626
Grand Total		311,386	78,056	389,442

¹Source of Data: NJ SPIRIT

²A CPS Report or a CWS Referral may include multiple children in a family, with one or more allegation or request for services. In these cases, each CPS Report or CWS Referral is counted once - the CPS Report or the CWS Referral is the unit of analysis rather than the child.

³Prior to January 2014, the number of CPS Reports and CWS Referrals was based on the type of assignment of the CPS Report or CWS Referral. Beginning in January 2014, the number of CPS Reports and CWS Referrals is based on the number of CPS Reports and CWS Referrals received.

Table 3: Source of CPS Reports and CWS Referrals

	Source	Mar 2014	Apr 2014	May 2014	Jun 2014	Jul 2014	Aug 2014	Sep 2014	Oct 2014	Nov 2014	Dec 2014	Jan 2015	Feb 2015	March 2015	13 Month Total		
CPS Reports and CWS Referrals	School Staff	2,000	1,523	1,861	1,216	200	90	1,200	1,935	1,395	1,481	1,504	1,629	1,894	27%	17,928	22%
	Healthcare Provider	855	878	818	806	860	704	774	824	735	774	701	720	825	12%	10,274	13%
	Law Enforcement	900	853	994	955	961	934	922	898	835	820	870	783	933	13%	11,658	14%
	Government Agency	451	475	504	472	480	429	470	474	350	402	362	377	465	6%	5,711	7%
	Parent	526	525	666	554	593	549	591	603	517	520	510	506	539	9%	7,199	9%
	Relative/Friend/Neighbor	460	533	577	596	688	586	553	568	418	406	468	393	491	7%	6,737	8%
	Anonymous	803	740	741	723	609	640	661	772	614	659	612	607	687	10%	8,868	11%
	CP&P	126	111	128	148	139	111	119	113	94	113	109	120	110	2%	1,541	2%
	Court/Legal	145	142	116	120	138	122	111	129	78	114	118	95	108	2%	1,536	2%
	Community Group/Individual	248	275	269	241	274	241	271	270	209	211	233	263	260	4%	3,265	4%
	Facility Staff (incl Correctional Facility)	96	74	69	96	94	88	72	92	82	89	107	79	71	1%	1,109	1%
	Child (Self)	41	55	44	56	52	38	63	47	42	46	40	35	39	1%	598	1%
	Other	327	317	334	318	350	312	342	354	293	308	291	298	328	5%	4,172	5%
	Daycare/Babysitter	16	15	15	12	11	7	17	16	8	13	15	14	17	0%	176	0%
Total		6,994	6,516	7,136	6,313	5,449	4,851	6,166	7,095	5,670	5,956	5,940	5,919	6,767		80,772	

Table 4: Monthly Count of CPS Reports and CWS Referrals Assigned to Counties

County														Average # of Assignments the Last 12 Months	Mar 14 to Mar 15 Numerical Difference
	Mar 2014	Apr 2014	May 2014	Jun 2014	Jul 2014	Aug 2014	Sep 2014	Oct 2014	Nov 2014	Dec 2014	Jan 2015	Feb 2015	Mar 2015		
Atlantic	267	242	288	234	229	221	233	292	234	245	233	210	269	244	2
Bergen	342	334	378	295	228	235	337	392	328	323	323	324	386	324	44
Burlington	342	312	351	279	242	248	251	335	238	277	269	305	285	283	-57
Camden	495	547	567	528	490	400	537	594	502	464	487	505	534	513	39
Cape May	74	87	112	64	96	92	95	87	59	71	82	68	93	84	19
Cumberland	208	222	247	210	218	147	214	224	189	207	213	201	253	212	45
Essex	762	664	753	632	536	516	630	725	579	622	617	597	769	637	7
Gloucester	266	234	297	295	254	206	261	300	228	232	238	223	276	254	10
Hudson	537	437	509	466	338	275	446	532	349	398	414	396	442	417	-95
Hunterdon	68	50	59	41	57	39	50	47	33	65	30	52	45	47	-23
209	296	279	299	279	246	203	261	294	246	230	244	209	264	255	-32
Middlesex	499	438	475	400	336	284	413	458	341	418	424	464	479	411	-20
Monmouth	429	379	400	388	293	334	375	413	346	354	325	373	440	368	11
Morris	224	237	250	214	198	195	223	237	227	183	237	190	224	218	0
Ocean	429	369	411	416	372	316	384	456	387	381	374	364	398	386	-31
Passaic	471	472	478	402	340	299	384	427	382	417	361	387	443	399	-28
Salem	77	79	85	75	76	82	101	96	50	66	87	60	71	77	-6
Somerset	196	171	159	180	125	119	139	152	134	132	126	131	153	143	-43
Sussex	88	106	116	92	96	75	87	84	96	91	86	85	109	94	21
Union	337	347	306	303	245	204	286	354	311	288	322	278	360	300	23
Warren	111	103	99	99	77	73	93	113	87	102	97	119	92	96	-19
County Subtotals	6,518	6,109	6,639	5,892	5,092	4,563	5,800	6,612	5,346	5,566	5,589	5,541	6,385	5,761	-133
Central Region IAIU	60	60	75	60	54	40	55	70	54	61	48	50	50	56	-10
Metro Region IAIU	91	63	57	69	43	26	47	70	45	49	53	58	67	54	-24
Northern Region IAIU	88	60	85	59	50	41	58	80	47	67	62	61	73	62	-15
Southern Region IAIU	78	79	106	74	61	52	64	85	59	89	60	68	68	72	-10
IAIU Subtotals	317	262	323	262	208	159	224	305	205	266	223	237	258	244	-59
Unable to Determine¹	155	143	171	156	149	129	141	174	117	123	127	138	118	141	-37
Other Offices	4	2	3	3	0	0	1	4	2	1	1	3	6	2	2
Grand Total	6,994	6,516	7,136	6,313	5,449	4,851	6,166	7,095	5,670	5,956	5,940	5,919	6,767	6,148	-227

¹CPS Reports or CWS Referrals not assigned to an office through the Assignment Designee, but were assigned to an office for an assessment or investigation.

Table 5: Monthly Count of CPS Reports and CWS Referrals Assigned to CP&P Local Offices

County	Local Office	Type of Referral														Total
			Mar 2014	Apr 2014	May 2014	Jun 2014	Jul 2014	Aug 2014	Sep 2014	Oct 2014	Nov 2014	Dec 2014	Jan 2015	Feb 2015	Mar 2015	
ATLANTIC	Atlantic East	CPS	116	117	124	94	104	98	108	125	100	120	106	77	116	1,405
		CWS	36	28	32	27	23	32	23	35	36	24	29	26	32	383
		Total	152	145	156	121	127	130	131	160	136	144	135	103	148	1,788
	Atlantic West	CPS	94	75	107	89	75	71	82	103	75	77	76	85	101	1,110
		CWS	21	22	25	24	27	20	20	29	23	24	22	22	20	299
		Total	115	97	132	113	102	91	102	132	98	101	98	107	121	1,409
	County Totals	CPS	210	192	231	183	179	169	190	228	175	197	182	162	217	2,515
		CWS	57	50	57	51	50	52	43	64	59	48	51	48	52	682
		Total	267	242	288	234	229	221	233	292	234	245	233	210	269	3,197
BERGEN	Bergen Central	CPS	127	115	121	97	68	67	107	111	109	94	97	94	103	1,310
		CWS	35	39	45	31	23	24	38	51	49	39	39	32	37	482
		Total	162	154	166	128	91	91	145	162	158	133	136	126	140	1,792
	Bergen South	CPS	145	136	163	129	99	102	142	181	124	136	144	144	183	1,828
		CWS	35	44	49	38	38	42	50	49	46	54	43	54	63	605
		Total	180	180	212	167	137	144	192	230	170	190	187	198	246	2,433
	County Totals	CPS	272	251	284	226	167	169	249	292	233	230	241	238	286	3,138
		CWS	70	83	94	69	61	66	88	100	95	93	82	86	100	1,087
		Total	342	334	378	295	228	235	337	392	328	323	323	324	386	4,225
BURLINGTON	Burlington East	CPS	128	119	132	103	98	89	88	115	107	110	110	116	105	1,420
		CWS	40	23	37	32	27	35	32	38	25	30	25	33	29	406
		Total	168	142	169	135	125	124	120	153	132	140	135	149	134	1,826
	Burlington West	CPS	139	133	141	111	94	90	89	145	80	100	104	121	119	1,466
		CWS	35	37	41	33	23	34	42	37	26	37	30	35	32	442
		Total	174	170	182	144	117	124	131	182	106	137	134	156	151	1,908
	County Totals	CPS	267	252	273	214	192	179	177	260	187	210	214	237	224	2,886
		CWS	75	60	78	65	50	69	74	75	51	67	55	68	61	848
		Total	342	312	351	279	242	248	251	335	238	277	269	305	285	3,734
CAMDEN	Camden Central	CPS	100	127	110	127	111	97	109	151	100	103	123	127	1,508	
		CWS	23	37	48	39	34	30	35	26	28	23	35	28	23	409
		Total	123	164	158	166	145	127	144	177	128	126	158	151	150	1,917
	Camden East	CPS	97	112	118	101	94	82	92	116	91	93	74	93	89	1,252
		CWS	45	34	21	38	27	18	46	37	39	24	31	19	30	409
		Total	142	146	139	139	121	100	138	153	130	117	105	112	119	1,661
	Camden North	CPS	94	107	96	104	91	71	95	122	105	73	89	85	106	1,238
		CWS	27	39	41	31	27	15	25	23	28	33	31	29	33	382
		Total	121	146	137	135	118	86	120	145	133	106	120	114	139	1,620
	Camden South	CPS	77	75	101	62	82	64	94	92	88	84	78	96	97	1,090
		CWS	32	16	32	26	24	23	41	27	23	31	26	32	29	362
		Total	109	91	133	88	106	87	135	119	111	115	104	128	126	1,452
	County Totals	CPS	368	421	425	394	378	314	390	481	384	353	364	397	419	5,088
		CWS	127	126	142	134	112	86	147	113	118	111	123	108	115	1,562
		Total	495	547	567	528	490	400	537	594	502	464	487	505	534	6,650
CAPE MAY	Cape May	CPS	57	69	92	45	70	76	74	73	47	54	63	54	78	852
		CWS	17	18	20	19	26	16	21	14	12	17	19	14	15	228
		Total	74	87	112	64	96	92	95	87	59	71	82	68	93	1,080
	County Totals	CPS	57	69	92	45	70	76	74	73	47	54	63	54	78	852
		Total	74	87	112	64	96	92	95	87	59	71	82	68	93	1,080
CUMBERLAND	Cumberland East	CPS	48	51	64	57	67	30	55	69	56	43	51	52	63	706
		CWS	13	21	18	22	5	18	18	17	14	22	16	16	15	215
		Total	61	72	82	79	72	48	73	86	70	65	67	68	78	921
	Cumberland West	CPS	112	120	132	109	121	70	116	102	91	107	121	105	143	1,449
		CWS	35	30	33	22	25	29	25	36	28	35	25	28	32	383
		Total	147	150	165	131	146	99	141	138	119	142	146	133	175	1,832
	County Totals	CPS	160	171	196	166	188	100	171	171	147	150	172	157	206	2,155
		CWS	48	51	51	44	30	47	43	53	42	57	41	44	47	598
		Total	208	222	247	210	218	147	214	224	189	207	213	201	253	2,753



Table 5: Monthly Count of CPS Reports and CWS Referrals Assigned to CP&P Local Offices

County	Local Office	Type of Referral														Total
			Mar 2014	Apr 2014	May 2014	Jun 2014	Jul 2014	Aug 2014	Sep 2014	Oct 2014	Nov 2014	Dec 2014	Jan 2015	Feb 2015	Mar 2015	
ESSEX	Essex Central	CPS	101	93	95	98	76	67	84	104	73	77	97	68	92	1,125
		CWS	36	26	36	28	28	20	30	42	36	36	34	31	25	408
		Total	137	119	131	126	104	87	114	146	109	113	131	99	117	1,533
	Essex North	CPS	88	68	78	56	37	43	68	65	61	59	50	48	63	784
		CWS	16	18	29	26	13	14	21	25	20	16	14	23	26	261
		Total	104	86	107	82	50	57	89	90	81	75	64	71	89	1,045
	Essex South	CPS	80	64	63	66	42	55	50	61	48	61	70	70	95	825
		CWS	32	28	25	16	23	25	31	22	30	29	24	26	22	333
		Total	112	92	88	82	65	80	81	83	78	90	94	96	117	1,158
	Newark Center City	CPS	104	79	85	80	73	62	83	90	68	91	75	74	110	1,074
		CWS	28	26	46	28	19	30	33	40	28	24	19	21	33	375
		Total	132	105	131	108	92	92	116	130	96	115	94	95	143	1,449
	Newark Northeast	CPS	90	77	103	74	83	70	78	97	80	68	74	101	107	1,102
		CWS	29	34	39	41	22	25	27	28	25	40	36	27	45	418
		Total	119	111	142	115	105	95	105	125	105	108	110	128	152	1,520
	Newark South	CPS	99	114	112	88	91	69	93	124	80	88	94	81	120	1,253
		CWS	59	36	42	31	29	36	32	27	30	33	30	26	31	442
		Total	158	150	154	119	120	105	125	151	110	121	124	107	151	1,695
	Newark Adoption Office	CPS	0	1	0	0	0	0	0	0	0	0	0	0	0	1
		CWS	0	0	0	0	0	0	0	0	0	0	0	0	0	0
		Total	0	1	0	0	0	0	0	0	0	0	0	0	0	1
County Totals	CPS	562	496	536	462	402	366	456	541	410	444	460	442	587	6,164	
	CWS	200	168	217	170	134	150	174	184	169	178	157	154	182	2,237	
	Total	762	664	753	632	536	516	630	725	579	622	617	596	769	8,401	
GLOUCESTER	Gloucester East	CPS	97	82	114	112	94	73	90	101	85	95	96	110	1,234	
		CWS	32	27	31	22	21	25	28	37	39	28	18	20	29	357
		Total	129	109	145	134	115	98	118	138	124	113	113	116	139	1,591
	Gloucester West	CPS	112	107	116	125	103	82	119	126	74	96	96	80	113	1,349
		CWS	25	18	36	36	36	26	24	36	30	23	29	27	24	370
		Total	137	125	152	161	139	108	143	162	104	119	125	107	137	1,719
	County Totals	CPS	209	189	230	237	197	155	209	227	159	181	191	176	223	2,583
		CWS	57	45	67	58	57	51	52	73	69	51	47	47	53	727
		Total	266	234	297	295	254	206	261	300	228	232	238	223	276	3,310
HUDSON	Hudson Central	CPS	79	80	96	84	74	58	76	94	49	56	73	84	90	993
		CWS	21	22	32	19	28	28	34	33	31	29	27	25	30	359
		Total	100	102	128	103	102	86	110	127	80	85	100	109	120	1,352
	Hudson North	CPS	105	86	93	98	48	34	90	99	53	74	69	70	73	992
		CWS	25	19	25	32	19	17	25	33	23	26	30	22	29	325
		Total	130	105	118	130	67	51	115	132	76	100	99	92	102	1,317
	Hudson South	CPS	112	83	93	88	66	43	88	95	59	88	77	80	87	1,059
		CWS	44	33	41	29	19	31	21	36	30	17	23	32	31	387
		Total	156	116	134	117	85	74	109	131	89	105	100	112	118	1,446
	Hudson West	CPS	113	90	102	92	63	43	87	113	85	81	86	65	77	1,097
		CWS	38	24	27	24	21	21	25	29	19	27	29	18	25	327
		Total	151	114	129	116	84	64	112	142	104	108	115	83	102	1,424
	County Totals	CPS	409	339	384	362	251	178	341	401	246	299	305	299	327	4,141
		CWS	128	98	125	104	87	97	105	131	103	99	109	97	115	1,398
		Total	537	437	509	466	338	275	446	532	349	398	414	396	442	5,539
HUNTERDON	Hunterdon	CPS	55	39	40	33	44	32	34	38	23	46	19	39	28	470
		CWS	13	11	19	8	13	7	16	9	10	19	11	13	17	166
		Total	68	50	59	41	57	39	50	47	33	65	30	52	45	636
	County Totals	CPS	55	39	40	33	44	32	34	38	23	46	19	39	28	470
		CWS	13	11	19	8	13	7	16	9	10	19	11	13	17	166
Total	68	50	59	41	57	39	50	47	33	65	30	52	45	636		
MERCER	Mercer North	CPS	109	93	105	102	87	79	89	123	96	81	97	78	82	1,221
		CWS	23	28	43	38	25	27	35	28	42	30	30	29	43	421
		Total	132	121	148	140	112	106	124	151	138	111	127	107	125	1,642
	Mercer South	CPS	127	123	128	109	106	74	112	117	88	96	87	75	110	1,352
		CWS	37	35	23	30	28	23	25	26	20	23	30	27	29	356
		Total	164	158	151	139	134	97	137	143	108	119	117	102	139	1,708
	County Totals	CPS	236	216	233	211	193	153	201	240	184	177	184	153	192	2,573
CWS		60	63	66	68	53	50	60	54	62	53	60	56	72	777	
Total	296	279	299	279	246	203	261	294	246	230	244	209	264	3,350		

Data in this report is preliminary and may differ from any final report. This report is produced to ensure continuous quality improvement throughout DCF.

Table 5: Monthly Count of CPS Reports and CWS Referrals Assigned to CP&P Local Offices

County	Local Office	Type of Referral													Total	
			Mar 2014	Apr 2014	May 2014	Jun 2014	Jul 2014	Aug 2014	Sep 2014	Oct 2014	Nov 2014	Dec 2014	Jan 2015	Feb 2015		Mar 2015
MIDDLESEX	Middlesex Central	CPS	87	78	87	79	65	51	81	90	54	64	77	75	83	971
		CWS	21	22	20	19	19	22	22	24	14	24	27	16	20	270
		Total	108	100	107	98	84	73	103	114	68	88	104	91	103	1,241
	Middlesex Coastal	CPS	171	135	149	122	118	92	103	137	105	121	131	135	154	1,673
		CWS	37	34	28	34	20	17	47	38	36	37	32	46	49	455
		Total	208	169	177	156	138	109	150	175	141	158	163	181	203	2,128
	Middlesex West	CPS	143	136	162	109	87	81	119	134	86	124	129	155	139	1,604
		CWS	40	33	29	37	27	21	41	35	46	48	28	37	34	456
		Total	183	169	191	146	114	102	160	169	132	172	157	192	173	2,060
	County Totals	CPS	401	349	398	310	270	224	303	361	245	309	337	365	376	4,248
CWS		98	89	77	90	66	60	110	97	96	109	87	99	103	1,181	
Total		499	438	475	400	336	284	413	458	341	418	424	464	479	5,429	
MONMOUTH	Monmouth North	CPS	183	166	183	139	125	142	156	169	141	142	153	158	181	2,038
		CWS	51	57	35	52	39	41	45	49	32	50	30	50	47	578
		Total	234	223	218	191	164	183	201	218	173	192	183	208	228	2,616
	Monmouth South	CPS	150	117	131	153	111	119	134	153	129	118	109	122	171	1,717
		CWS	45	39	51	44	18	32	40	42	44	44	33	43	41	516
		Total	195	156	182	197	129	151	174	195	173	162	142	165	212	2,233
	County Totals	CPS	333	283	314	292	236	261	290	322	270	260	262	280	352	3,755
		CWS	96	96	86	96	57	73	85	91	76	94	63	93	88	1,094
		Total	429	379	400	388	293	334	375	413	346	354	325	373	440	4,849
	MORRIS	Morris East	CPS	77	85	82	66	70	53	87	80	69	62	70	70	80
CWS			24	17	39	29	22	25	19	24	28	25	30	21	28	331
Total			101	102	121	95	92	78	106	104	97	87	100	91	108	1,282
Morris West		CPS	97	102	97	87	80	87	85	108	91	67	101	83	84	1,169
		CWS	26	33	32	32	26	30	32	25	39	29	36	16	32	388
		Total	123	135	129	119	106	117	117	133	130	96	137	99	116	1,557
County Totals		CPS	174	187	179	153	150	140	172	188	160	129	171	153	164	2,120
		CWS	50	50	71	61	48	55	51	49	67	54	66	37	60	719
		Total	224	237	250	214	198	195	223	237	227	183	237	190	224	2,839
OCEAN		Ocean North	CPS	128	149	161	148	132	110	139	132	147	126	113	144	132
	CWS		44	30	38	36	33	35	36	46	42	39	32	36	54	501
	Total		172	179	199	184	165	145	175	178	189	165	145	180	186	2,262
	Ocean South	CPS	207	155	156	188	156	141	160	226	161	168	178	144	171	2,211
		CWS	50	35	56	44	51	30	49	52	37	48	51	40	41	584
		Total	257	190	212	232	207	171	209	278	198	216	229	184	212	2,795
	County Totals	CPS	335	304	317	336	288	251	299	358	308	294	291	288	303	3,972
		CWS	94	65	94	80	84	65	85	98	79	87	83	76	95	1,085
		Total	429	369	411	416	372	316	384	456	387	381	374	364	398	5,057
	PASSAIC	Passaic Central	CPS	200	184	203	159	128	112	140	182	161	179	132	149	161
CWS			71	50	55	60	49	34	53	53	53	59	44	45	77	703
Total			271	234	258	219	177	146	193	235	214	238	176	194	238	2,793
Passaic North		CPS	159	176	176	131	122	113	153	141	119	140	128	148	138	1,844
		CWS	41	62	44	52	41	40	38	51	49	39	57	45	67	626
		Total	200	238	220	183	163	153	191	192	168	179	185	193	205	2,470
County Totals		CPS	359	360	379	290	250	225	293	323	280	319	260	297	299	3,934
		CWS	112	112	99	112	90	74	91	104	102	98	101	90	144	1,329
		Total	471	472	478	402	340	299	384	427	382	417	361	387	443	5,263
SALEM		Salem	CPS	56	67	66	54	57	69	82	80	41	52	64	47	52
	CWS		21	12	19	21	19	13	19	16	9	14	23	13	19	218
	Total		77	79	85	75	76	82	101	96	50	66	87	60	71	1,005
	County Totals	CPS	56	67	66	54	57	69	82	80	41	52	64	47	52	787
		CWS	21	12	19	21	19	13	19	16	9	14	23	13	19	218
		Total	77	79	85	75	76	82	101	96	50	66	87	60	71	1,005
SOMERSET	Somerset	CPS	161	133	120	137	102	93	110	116	95	98	100	101	111	1,477
		CWS	35	38	39	43	23	26	29	36	39	34	26	30	42	440
		Total	196	171	159	180	125	119	139	152	134	132	126	131	153	1,917
	County Totals	CPS	161	133	120	137	102	93	110	116	95	98	100	101	111	1,477
		CWS	35	38	39	43	23	26	29	36	39	34	26	30	42	440
		Total	196	171	159	180	125	119	139	152	134	132	126	131	153	1,917

Table 5: Monthly Count of CPS Reports and CWS Referrals Assigned to CP&P Local Offices

County	Local Office	Type of Referral														Total	
			Mar 2014	Apr 2014	May 2014	Jun 2014	Jul 2014	Aug 2014	Sep 2014	Oct 2014	Nov 2014	Dec 2014	Jan 2015	Feb 2015	Mar 2015		
SUSSEX	Sussex	CPS	69	87	88	71	73	55	59	60	71	70	66	64	80	913	
		CWS	19	19	28	21	23	20	28	24	25	21	20	21	29	298	
		Total	88	106	116	92	96	75	87	84	96	91	86	85	109	1,211	
	County Totals	CPS	69	87	88	71	73	55	59	60	71	70	66	64	80	913	
		CWS	19	19	28	21	23	20	28	24	25	21	20	21	29	298	
	Total	88	106	116	92	96	75	87	84	96	91	86	85	109	1,211		
UNION	Union Central	CPS	79	93	69	73	59	36	63	94	81	67	91	75	86	966	
		CWS	34	19	20	21	24	20	21	37	17	15	21	19	30	298	
		Total	113	112	89	94	83	56	84	131	98	82	112	94	116	1,264	
	Union East	CPS	103	110	79	92	63	49	69	94	83	82	72	73	92	1,061	
		CWS	29	34	25	38	26	26	28	26	28	27	34	24	43	388	
		Total	132	144	104	130	89	75	97	120	111	109	106	97	135	1,449	
	Union West	CPS	59	67	88	59	47	58	83	78	80	69	75	66	81	910	
		CWS	33	24	25	20	26	15	22	25	22	28	29	21	28	318	
		Total	92	91	113	79	73	73	105	103	102	97	104	87	109	1,228	
	County Totals	CPS	241	270	236	224	169	143	215	266	244	218	238	214	259	2,937	
		CWS	96	77	70	79	76	61	71	88	67	70	84	64	101	1,004	
		Total	337	347	306	303	245	204	286	354	311	288	322	278	360	3,941	
	WARREN	Warren	CPS	81	76	76	72	66	54	72	96	64	74	68	87	66	952
CWS			30	27	23	27	11	19	21	17	23	28	29	32	26	313	
Total			111	103	99	99	77	73	93	113	87	102	97	119	92	1,265	
County Totals		CPS	81	76	76	72	66	54	72	96	64	74	68	87	66	952	
		CWS	30	27	23	27	11	19	21	17	23	28	29	32	26	313	
	Total	111	103	99	99	77	73	93	113	87	102	97	119	92	1,265		
County CPS Referral Total		CPS	5,015	4,751	5,097	4,472	3,922	3,406	4,387	5,122	3,973	4,164	4,252	4,250	4,849	57,660	
County CWS Referral Total		CWS	1,503	1,358	1,542	1,420	1,170	1,157	1,413	1,490	1,373	1,402	1,337	1,290	1,536	17,991	
County Referral Total		Total	6,518	6,109	6,639	5,892	5,092	4,563	5,800	6,612	5,346	5,566	5,589	5,540	6,385	75,651	
Central Region IAIU		CPS	60	60	75	60	54	40	55	70	54	61	48	50	50	737	
		CWS	0	0	0	0	0	0	0	0	0	0	0	0	0	0	0
		Total	60	60	75	60	54	40	55	70	54	61	48	50	50	737	
Metro Region IAIU		CPS	91	63	57	69	43	25	47	70	45	49	53	59	67	738	
		CWS	0	0	0	0	0	1	0	1	0	0	0	0	0	0	2
		Total	91	63	57	69	43	26	47	71	45	49	53	59	67	740	
Northern Region IAIU		CPS	88	60	85	59	50	41	58	80	47	67	62	61	73	831	
		CWS	0	0	0	0	0	0	0	0	0	0	0	0	0	0	0
		Total	88	60	85	59	50	41	58	80	47	67	62	61	73	831	
Southern Region IAIU		CPS	78	79	106	74	61	52	64	85	59	89	60	68	68	943	
		CWS	0	0	0	0	0	0	0	0	0	0	0	0	0	0	0
		Total	78	79	106	74	61	52	64	85	59	89	60	68	68	943	
IAIU CPS Subtotal		CPS	317	262	323	262	208	158	224	305	205	266	223	238	258	3,249	
IAIU CWS Subtotal		CWS	0	0	0	0	0	1	1	0	0	0	0	0	0	2	
IAIU Subtotal		Total	317	262	323	262	208	159	225	305	205	266	223	238	258	3,251	
County and IAIU CPS Subtotal		CPS	5,332	5,013	5,420	4,734	4,130	3,564	4,611	5,427	4,178	4,430	4,475	4,488	5,107	60,909	
County and IAIU CWS Subtotal		CWS	1,503	1,358	1,542	1,420	1,170	1,158	1,414	1,490	1,373	1,402	1,337	1,290	1,536	17,993	
Unable to Determine⁽¹⁾		Total	155	143	171	156	149	129	141	174	117	123	127	138	118	1,841	
Other Offices		Total	4	2	3	3	0	0	0	4	2	1	1	3	6	29	
Grand Total		Total	6,994	6,516	7,136	6,313	5,449	4,851	6,166	7,095	5,670	5,956	5,940	5,919	6,767	80,772	

⁽¹⁾CPS Reports or CWS Referrals not assigned to an office through the Assignment Designee, but were assigned to an office for an assessment or investigation.