



Child Protection and Permanency

Monthly Screening and Investigation Report April 2015

Allison Blake, Ph.D., L.S.W.
Commissioner

May 20, 2015



NEW JERSEY DEPARTMENT OF
CHILDREN AND FAMILIES

Table of Contents

Table 1: NJ State Central Registry Activity: Monthly Child Abuse and Neglect Hotline Calls, Intakes and Assignments to Child Protection & Permanency (CP&P) Offices

Chart 1: CP&P Annual Trends in Child Protection Services (CPS) Reports and Child Welfare Services (CWS) Referrals

Table 2: Assignments to CP&P Offices: CPS Reports and CWS Referrals

Table 3: Source of CPS Reports and CWS Referrals

Table 4: Monthly Count of CPS Reports and CWS Referrals Assigned to Counties

Table 5: Monthly Count of CPS Reports and CWS Referrals Assigned to CP&P Local Offices

Table 1: NJ State Central Registry Activity: Monthly Child Abuse and Neglect Hotline Calls, Intakes and Assignments to CP&P Offices^{1,2,7}

2014 - 2015	Hotline Call Activity				Intakes Recorded in NJ SPIRIT ^{6,8}												Assignments to CP&P Offices				
	Total Calls to SCR ³	Abandon Calls ⁴	Average Time to Answer (seconds)	Resulting NJS Intakes ⁵	CPS Reports		CWS Referrals		No Action Required (NAR)		Related Information (RI)		Information & Referral (I&R)		Information Only (IO)		CPS Reports		CWS Referrals		Total
					n	%	n	%	n	%	n	%	n	%	n	%	n	%	n	%	
April 2014	14,056	405	21	15,642	5,052	32.3%	1,467	9.4%	400	2.6%	3,846	24.6%	1,676	10.7%	3,201	20.5%	5,049	77.5%	1,467	22.5%	6,516
May 2014	15,690	717	31	17,101	5,501	32.2%	1,635	9.6%	396	2.3%	4,444	26.0%	1,816	10.6%	3,309	19.3%	5,501	77.1%	1,635	22.9%	7,136
June 2014	13,809	465	27	15,171	4,796	31.6%	1,516	10.0%	402	2.6%	4,028	26.6%	1,625	10.7%	2,804	18.5%	4,796	76.0%	1,517	24.0%	6,313
July 2014	12,308	344	21	13,784	4,202	30.5%	1,247	9.0%	384	2.8%	3,758	27.3%	1,487	10.8%	2,706	19.6%	4,202	77.1%	1,247	22.9%	5,449
August 2014	11,306	277	17	12,610	3,629	28.8%	1,222	9.7%	331	2.6%	3,314	26.3%	1,321	10.5%	2,793	22.1%	3,629	74.8%	1,222	25.2%	4,851
September 2014	13,664	359	22	15,190	4,668	30.7%	1,496	9.8%	393	2.6%	3,949	26.0%	1,792	11.8%	2,892	19.0%	4,668	75.7%	1,498	24.3%	6,166
October 2014	15,268	435	26	16,868	5,510	32.7%	1,584	9.4%	555	3.3%	4,259	25.2%	1,946	11.5%	3,014	17.9%	5,509	77.6%	1,586	22.4%	7,095
November 2014	12,649	391	28	13,938	4,254	30.5%	1,416	10.2%	297	2.1%	3,895	27.9%	1,473	10.6%	2,603	18.7%	4,254	75.0%	1,416	25.0%	5,670
December 2014	13,289	468	29	14,588	4,511	30.9%	1,449	9.9%	303	2.1%	3,888	26.7%	1,620	11.1%	2,817	19.3%	4,509	75.7%	1,447	24.3%	5,956
January 2015	13,991	761	34	15,030	4,549	30.3%	1,390	9.2%	387	2.6%	3,939	26.2%	1,591	10.6%	3,174	21.1%	4,549	76.6%	1,391	23.4%	5,940
February 2015	12,881	537	35	14,010	4,573	32.6%	1,342	9.6%	418	3.0%	3,494	24.9%	1,516	10.8%	2,667	19.0%	4,574	77.3%	1,345	22.7%	5,919
March 2015	14,805	486	30	16,174	5,187	32.1%	1,580	9.8%	363	2.2%	4,021	24.9%	1,811	11.2%	3,212	19.9%	5,187	76.7%	1,580	23.3%	6,767
April 2015	13,698	409	26	15,107	4,967	32.9%	1,381	9.1%	366	2.4%	3,900	25.8%	1,615	10.7%	2,878	19.1%	4,967	78.2%	1,384	21.8%	6,351
Monthly Average	13,647	466	27	15,016	4,723	31.5%	1,440	9.6%	384	2.6%	3,903	26.0%	1,638	10.9%	2,928	19.5%	4,723	76.6%	1,441	23.4%	6,164
Overall Total	177,414	6,054		195,213	61,399		18,725		4,995		50,735		21,289		38,070		61,394	76.6%	18,735	23.4%	80,129

¹Comes from three distinct sources: (1) the Automatic Call Distribution (ACD) phone system; which keeps a count of the number of calls and call routing; (2) Monthly NJSpirit Intakes; which record decision making on calls received by hotline screeners, and (3) NJSpirit extracts of assigned CWS Referrals and CPS Reports.

²The number of Intakes, CPS Reports, and CWS Referrals are based on an extract from NJSpirit. Data extracted by the Office of Research, Evaluation, and Reporting on May 11, 2015 includes all Intakes, CPS Reports, and CWS Referrals received from April 1, 2015 through April 30, 2015.

³The number calls received through the ACD System that were directed to a screener from any call-in phone number.

⁴The number of calls received through the ACD System that are abandoned either while waiting in queue or while ringing.

⁵The number of Intakes entered in NJSpirit from the number of calls received.

⁶The number of Intakes recorded in NJSpirit, by type of Intake. There is not a one-to-one relationship between an ACD call and an Intake; multiple calls to State Central Registry (SCR) may result in a single Intake, or one call may result in multiple Intakes.

⁷Intake: The process of documenting: a report of alleged abuse or neglect of a child (CPS); a request for services on behalf of a child, or a referral of a child for services (CWS); a call in which the caller provides additional or clarifying information about a current service case or active investigation (RI); informing a caller of, or referring a caller to, services available from other private or public sources (I&R); a call that requires no action by CP&P (NAR); or a response to a simple inquiry (IO).

⁸NJ SPIRIT: NJ Statewide Protection Investigation and Reporting Information Tool case management system

CP&P Annual Trends in CPS Reports and CWS Referrals

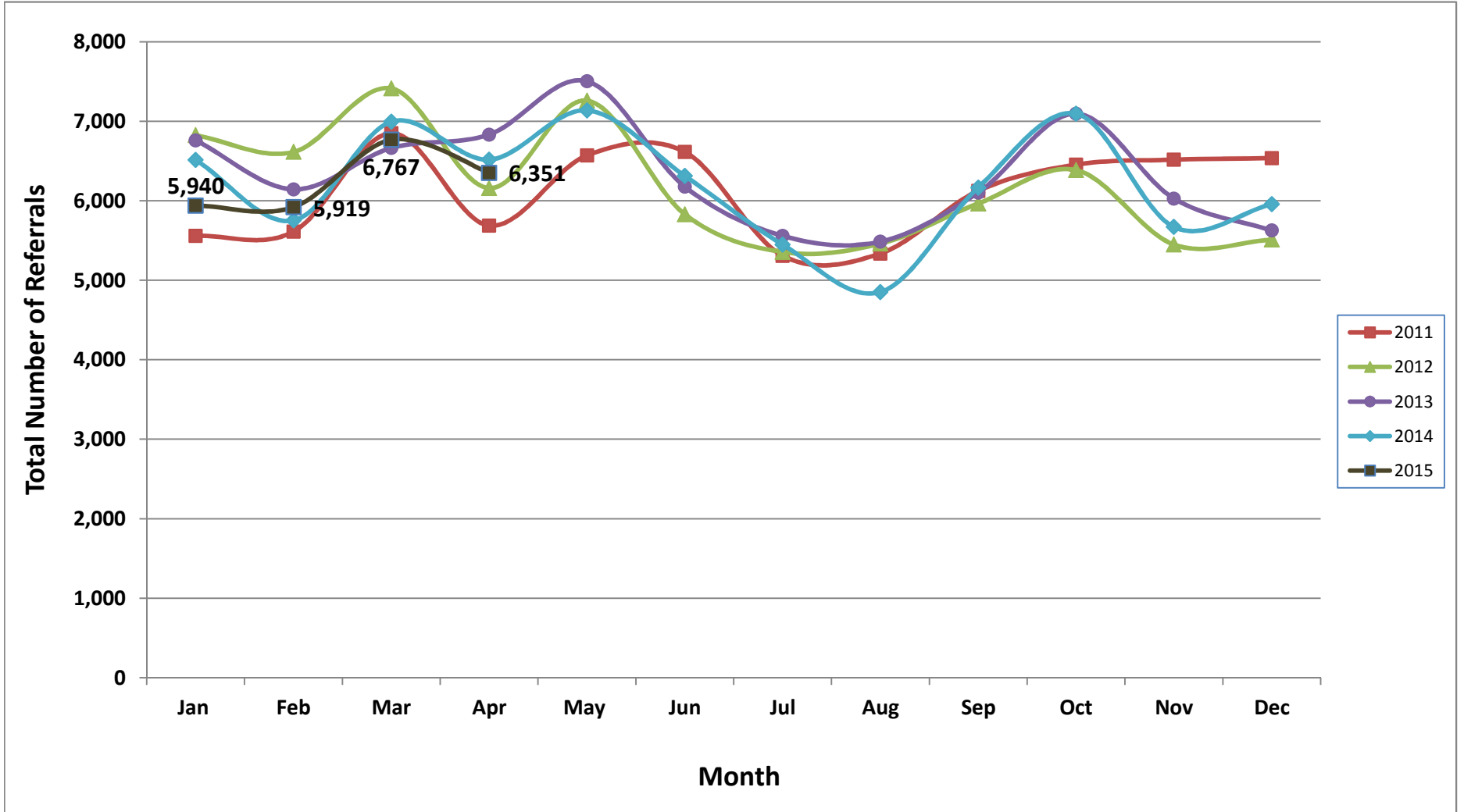


Table 2: Assignments to CP&P Offices: CPS Reports and CWS Referrals¹

Intake Date ³		CPS Reports ²	CWS Referrals ²	Total Assignments ²
2010	Jan 2010	5,154	963	6,117
	Feb 2010	4,446	804	5,250
	Mar 2010	6,314	1,147	7,461
	Apr 2010	5,465	1,040	6,505
	May 2010	5,797	1,177	6,974
	Jun 2010	5,734	1,157	6,891
	Jul 2010	4,270	1,017	5,287
	Aug 2010	4,110	1,028	5,138
	Sep 2010	4,922	1,012	5,934
	Oct 2010	5,105	1,136	6,241
	Nov 2010	4,842	1,028	5,870
	Dec 2010	4,472	909	5,381
	Total	60,631	12,418	73,049
2011	Jan 2011	4,616	942	5,558
	Feb 2011	4,672	939	5,611
	Mar 2011	5,701	1,148	6,849
	Apr 2011	4,682	1,005	5,687
	May 2011	5,362	1,207	6,569
	Jun 2011	5,299	1,315	6,614
	Jul 2011	4,200	1,108	5,308
	Aug 2011	4,170	1,166	5,336
	Sep 2011	4,872	1,253	6,125
	Oct 2011	5,322	1,132	6,454
	Nov 2011	5,220	1,296	6,516
	Dec 2011	5,363	1,173	6,536
	Total	59,479	13,684	73,163
2012	Jan 2012	5,530	1,294	6,824
	Feb 2012	5,358	1,255	6,613
	Mar 2012	5,985	1,428	7,413
	Apr 2012	4,899	1,259	6,158
	May 2012	5,874	1,385	7,259
	Jun 2012	4,640	1,190	5,830
	Jul 2012	4,254	1,101	5,355
	Aug 2012	4,325	1,135	5,460
	Sep 2012	4,769	1,196	5,965
	Oct 2012	5,178	1,207	6,385
	Nov 2012	4,310	1,138	5,448
	Dec 2012	4,394	1,116	5,510
	Total	59,516	14,704	74,220

Table 2: Assignments to CP&P Offices: CPS Reports and CWS Referrals¹

Intake Date ³		CPS Reports ²	CWS Referrals ²	Total Assignments ²
2013	Jan 2013	5,464	1,296	6,760
	Feb 2013	4,966	1,177	6,143
	Mar 2013	5,355	1,309	6,664
	Apr 2013	5,430	1,402	6,832
	May 2013	5,993	1,510	7,503
	Jun 2013	4,947	1,230	6,177
	Jul 2013	4,330	1,228	5,558
	Aug 2013	4,330	1,155	5,485
	Sep 2013	4,851	1,251	6,102
	Oct 2013	5,614	1,481	7,095
	Nov 2013	4,694	1,334	6,028
	Dec 2013	4,397	1,229	5,626
	Total	60,371	15,602	75,973
2014	Jan 2014	5,097	1,416	6,513
	Feb 2014	4,457	1,295	5,752
	Mar 2014	5,408	1,586	6,994
	Apr 2014	5,049	1,467	6,516
	May 2014	5,501	1,635	7,136
	Jun 2014	4,796	1,517	6,313
	Jul 2014	4,202	1,247	5,449
	Aug 2014	3,629	1,222	4,851
	Sep 2014	4,668	1,498	6,166
	Oct 2014	5,509	1,586	7,095
	Nov 2014	4,254	1,416	5,670
	Dec 2014	4,509	1,447	5,956
	Total	57,079	17,332	74,411
2015	Jan 2015	4,549	1,391	5,940
	Feb 2015	4,574	1,345	5,919
	Mar 2015	5,187	1,580	6,767
	Apr 2015	4,967	1,384	6,351
Total	19,277	5,700	24,977	
Grand Total		316,353	79,440	395,793

¹Source of Data: NJ SPIRIT

²A CPS Report or a CWS Referral may include multiple children in a family, with one or more allegation or request for services. In these cases, each CPS Report or CWS Referral is counted once - the CPS Report or the CWS Referral is the unit of analysis rather than the child.

³Prior to January 2014, the number of CPS Reports and CWS Referrals was based on the type of assignment of the CPS Report or CWS Referral. Beginning in January 2014, the number of CPS Reports and CWS Referrals is based on the number of CPS Reports and CWS Referrals received.

Table 3: Source of CPS Reports and CWS Referrals

	Source	Apr 2014	May 2014	Jun 2014	Jul 2014	Aug 2014	Sep 2014	Oct 2014	Nov 2014	Dec 2014	Jan 2015	Feb 2015	Mar 2015	April 2015	13 Month Total		
CPS Reports and CWS Referrals	School Staff	1,523	1,861	1,216	200	90	1,200	1,935	1,395	1,481	1,504	1,629	1,894	1,487	23%	17,415	22%
	Healthcare Provider	878	818	806	860	704	774	824	735	774	701	720	825	861	14%	10,280	13%
	Law Enforcement	853	994	955	961	934	922	898	835	820	870	783	933	925	15%	11,683	15%
	Government Agency	475	504	472	480	429	470	474	350	402	362	377	465	445	7%	5,705	7%
	Parent	525	666	554	593	549	591	603	517	520	510	506	539	493	8%	7,166	9%
	Relative/Friend/Neighbor	533	577	596	688	586	553	568	418	406	468	393	491	484	8%	6,761	8%
	Anonymous	740	741	723	609	640	661	772	614	659	612	607	687	641	10%	8,706	11%
	CP&P	111	128	148	139	111	119	113	94	113	109	120	110	117	2%	1,532	2%
	Court/Legal	142	116	120	138	122	111	129	78	114	118	95	108	116	2%	1,507	2%
	Community Group/Individual	275	269	241	274	241	271	270	209	211	233	263	260	295	5%	3,312	4%
	Facility Staff (incl Correctional Facility)	74	69	96	94	88	72	92	82	89	107	79	71	106	2%	1,119	1%
	Child (Self)	55	44	56	52	38	63	47	42	46	40	35	39	37	1%	594	1%
	Other	317	334	318	350	312	342	354	293	308	291	298	328	332	5%	4,177	5%
	Daycare/Babysitter	15	15	12	11	7	17	16	8	13	15	14	17	12	0%	172	0%
Total		6,516	7,136	6,313	5,449	4,851	6,166	7,095	5,670	5,956	5,940	5,919	6,767	6,351		80,129	

Table 4: Monthly Count of CPS Reports and CWS Referrals Assigned to Counties

County														Average # of Assignments the Last 12 Months	Apr 14 to Apr 15 Numerical Difference
	Apr 2014	May 2014	Jun 2014	Jul 2014	Aug 2014	Sep 2014	Oct 2014	Nov 2014	Dec 2014	Jan 2015	Feb 2015	Mar 2015	Apr 2015		
Atlantic	242	288	234	229	221	233	292	234	245	233	210	269	277	247	35
Bergen	334	378	295	228	235	337	392	328	323	323	324	386	335	324	1
Burlington	312	351	279	242	248	251	335	238	277	269	305	285	319	283	7
Camden	547	567	528	490	400	537	594	502	464	487	505	534	506	510	-41
Cape May	87	112	64	96	92	95	87	59	71	82	68	93	85	84	-2
Cumberland	222	247	210	218	147	214	224	189	207	213	201	253	217	212	-5
Essex	664	753	632	536	516	630	725	579	622	617	597	769	699	640	35
Gloucester	234	297	295	254	206	261	300	228	232	238	223	276	288	258	54
Hudson	437	509	466	338	275	446	532	349	398	414	396	442	382	412	-55
Hunterdon	50	59	41	57	39	50	47	33	65	30	52	45	50	47	0
209	279	299	279	246	203	261	294	246	230	244	209	264	244	252	-35
Middlesex	438	475	400	336	284	413	458	341	418	424	464	479	418	409	-20
Monmouth	379	400	388	293	334	375	413	346	354	325	373	440	374	368	-5
Morris	237	250	214	198	195	223	237	227	183	237	190	224	208	216	-29
Ocean	369	411	416	372	316	384	456	387	381	374	364	398	402	388	33
Passaic	472	478	402	340	299	384	427	382	417	361	387	443	389	392	-83
Salem	79	85	75	76	82	101	96	50	66	87	60	71	96	79	17
Somerset	171	159	180	125	119	139	152	134	132	126	131	153	154	142	-17
Sussex	106	116	92	96	75	87	84	96	91	86	85	109	104	93	-2
Union	347	306	303	245	204	286	354	311	288	322	278	360	307	297	-40
Warren	103	99	99	77	73	93	113	87	102	97	119	92	101	96	-2
County Subtotals	6,109	6,639	5,892	5,092	4,563	5,800	6,612	5,346	5,566	5,589	5,541	6,385	5,955	5,748	-154
Central Region IAIU	60	75	60	54	40	55	70	54	61	48	50	50	51	56	-9
Metro Region IAIU	63	57	69	43	26	47	70	45	49	53	58	67	54	53	-9
Northern Region IAIU	60	85	59	50	41	58	80	47	67	62	61	73	70	63	10
Southern Region IAIU	79	106	74	61	52	64	85	59	89	60	68	68	78	72	-1
IAIU Subtotals	262	323	262	208	159	224	305	205	266	223	237	258	253	244	-9
Unable to Determine¹	143	171	156	149	129	141	174	117	123	127	138	118	141	140	-2
Other Offices	2	3	3	0	0	1	4	2	1	1	3	6	2	2	0
Grand Total	6,516	7,136	6,313	5,449	4,851	6,166	7,095	5,670	5,956	5,940	5,919	6,767	6,351	6,134	-165

¹CPS Reports or CWS Referrals not assigned to an office through the Assignment Designee, but were assigned to an office for an assessment or investigation.

Table 5: Monthly Count of CPS Reports and CWS Referrals Assigned to CP&P Local Offices

County	Local Office	Type of Referral													Total	
			Apr 2014	May 2014	Jun 2014	Jul 2014	Aug 2014	Sep 2014	Oct 2014	Nov 2014	Dec 2014	Jan 2015	Feb 2015	Mar 2015		Apr 2015
ATLANTIC	Atlantic East	CPS	117	124	94	104	98	108	125	100	120	106	77	116	134	1,423
		CWS	28	32	27	23	32	23	35	36	24	29	26	32	32	379
		Total	145	156	121	127	130	131	160	136	144	135	103	148	166	1,802
	Atlantic West	CPS	75	107	89	75	71	82	103	75	77	76	85	101	86	1,102
		CWS	22	25	24	27	20	20	29	23	24	22	22	20	25	303
		Total	97	132	113	102	91	102	132	98	101	98	107	121	111	1,405
	County Totals	CPS	192	231	183	179	169	190	228	175	197	182	162	217	220	2,525
		CWS	50	57	51	50	52	43	64	59	48	51	48	52	57	682
		Total	242	288	234	229	221	233	292	234	245	233	210	269	277	3,207
BERGEN	Bergen Central	CPS	115	121	97	68	67	107	111	109	94	97	94	103	110	1,293
		CWS	39	45	31	23	24	38	51	49	39	39	32	37	36	483
		Total	154	166	128	91	91	145	162	158	133	136	126	140	146	1,776
	Bergen South	CPS	136	163	129	99	102	142	181	124	136	144	144	183	133	1,816
		CWS	44	49	38	38	42	50	49	46	54	43	54	63	56	626
		Total	180	212	167	137	144	192	230	170	190	187	198	246	189	2,442
	County Totals	CPS	251	284	226	167	169	249	292	233	230	241	238	286	243	3,109
		CWS	83	94	69	61	66	88	100	95	93	82	86	100	92	1,109
		Total	334	378	295	228	235	337	392	328	323	323	324	386	335	4,218
BURLINGTON	Burlington East	CPS	119	132	103	98	89	88	115	107	110	110	116	105	138	1,430
		CWS	23	37	32	27	35	32	38	25	30	25	33	29	28	394
		Total	142	169	135	125	124	120	153	132	140	135	149	134	166	1,824
	Burlington West	CPS	133	141	111	94	90	89	145	80	100	104	121	119	117	1,444
		CWS	37	41	33	23	34	42	37	26	37	30	35	32	36	443
		Total	170	182	144	117	124	131	182	106	137	134	156	151	153	1,887
	County Totals	CPS	252	273	214	192	179	177	260	187	210	214	237	224	255	2,874
		CWS	60	78	65	50	69	74	75	51	67	55	68	61	64	837
		Total	312	351	279	242	248	251	335	238	277	269	305	285	319	3,711
CAMDEN	Camden Central	CPS	127	110	127	111	97	109	151	100	103	123	123	127	115	1,523
		CWS	37	48	39	34	30	35	26	28	23	35	28	23	38	424
		Total	164	158	166	145	127	144	177	128	126	158	151	150	153	1,947
	Camden East	CPS	112	118	101	94	82	92	116	91	93	74	93	89	102	1,257
		CWS	34	21	38	27	18	46	37	39	24	31	19	30	31	395
		Total	146	139	139	121	100	138	153	130	117	105	112	119	133	1,652
	Camden North	CPS	107	96	104	91	71	95	122	105	73	89	85	106	89	1,233
		CWS	39	41	31	27	15	25	23	28	33	31	29	33	31	386
		Total	146	137	135	118	86	120	145	133	106	120	114	139	120	1,619
	Camden South	CPS	75	101	62	82	64	94	92	88	84	78	96	97	88	1,101
		CWS	16	32	26	24	23	41	27	23	31	26	32	29	12	342
		Total	91	133	88	106	87	135	119	111	115	104	128	126	100	1,443
	County Totals	CPS	421	425	394	378	314	390	481	384	353	364	397	419	394	5,114
		CWS	126	142	134	112	86	147	113	118	111	123	108	115	112	1,547
		Total	547	567	528	490	400	537	594	502	464	487	505	534	506	6,661
CAPE MAY	Cape May	CPS	69	92	45	70	76	74	73	47	54	63	54	78	63	858
		CWS	18	20	19	26	16	21	14	12	17	19	14	15	22	233
		Total	87	112	64	96	92	95	87	59	71	82	68	93	85	1,091
	County Totals	CPS	69	92	45	70	76	74	73	47	54	63	54	78	63	858
		Total	87	112	64	96	92	95	87	59	71	82	68	93	85	1,091
CUMBERLAND	Cumberland East	CPS	51	64	57	67	30	55	69	56	43	51	52	63	50	708
		CWS	21	18	22	5	18	18	17	14	22	16	16	15	12	214
		Total	72	82	79	72	48	73	86	70	65	67	68	78	62	922
	Cumberland West	CPS	120	132	109	121	70	116	102	91	107	121	105	143	117	1,454
		CWS	30	33	22	25	29	25	36	28	35	25	28	32	38	386
		Total	150	165	131	146	99	141	138	119	142	146	133	175	155	1,840
	County Totals	CPS	171	196	166	188	100	171	171	147	150	172	157	206	167	2,162
		CWS	51	51	44	30	47	43	53	42	57	41	44	47	50	600
		Total	222	247	210	218	147	214	224	189	207	213	201	253	217	2,762

Table 5: Monthly Count of CPS Reports and CWS Referrals Assigned to CP&P Local Offices

County	Local Office	Type of Referral	Apr	May	Jun	Jul	Aug	Sep	Oct	Nov	Dec	Jan	Feb	Mar	Apr	Total	
			2014	2014	2014	2014	2014	2014	2014	2014	2014	2014	2015	2015	2015		2015
MIDDLESEX	Middlesex Central	CPS	78	87	79	65	51	81	90	54	64	77	75	83	85	969	
		CWS	22	20	19	19	22	22	24	14	24	27	16	20	21	270	
		Total	100	107	98	84	73	103	114	68	88	104	91	103	106	1,239	
	Middlesex Coastal	CPS	135	149	122	118	92	103	137	105	121	131	135	154	122	1,624	
		CWS	34	28	34	20	17	47	38	36	37	32	46	49	34	452	
		Total	169	177	156	138	109	150	175	141	158	163	181	203	156	2,076	
	Middlesex West	CPS	136	162	109	87	81	119	134	86	124	129	155	139	122	1,583	
		CWS	33	29	37	27	21	41	35	46	48	28	37	34	34	450	
		Total	169	191	146	114	102	160	169	132	172	157	192	173	156	2,033	
	County Totals	CPS	349	398	310	270	224	303	361	245	309	337	365	376	329	4,176	
		Total	438	475	400	336	284	413	458	341	418	424	464	479	418	5,348	
	MONMOUTH	Monmouth North	CPS	166	183	139	125	142	156	169	141	142	153	158	181	156	2,011
CWS			57	35	52	39	41	45	49	32	50	30	50	47	40	567	
Total			223	218	191	164	183	201	218	173	192	183	208	228	196	2,578	
Monmouth South		CPS	117	131	153	111	119	134	153	129	118	109	122	171	146	1,713	
		CWS	39	51	44	18	32	40	42	44	44	33	43	41	32	503	
		Total	156	182	197	129	151	174	195	173	162	142	165	212	178	2,216	
County Totals		CPS	283	314	292	236	261	290	322	270	260	262	280	352	302	3,724	
		Total	379	400	388	293	334	375	413	346	354	325	373	440	374	4,794	
MORRIS		Morris East	CPS	85	82	66	70	53	87	80	69	62	70	70	80	84	958
			CWS	17	39	29	22	25	19	24	28	25	30	21	28	21	328
	Total		102	121	95	92	78	106	104	97	87	100	91	108	105	1,286	
	Morris West	CPS	102	97	87	80	87	85	108	91	67	101	83	84	70	1,142	
		CWS	33	32	32	26	30	32	25	39	29	36	16	32	33	395	
		Total	135	129	119	106	117	117	133	130	96	137	99	116	103	1,537	
	County Totals	CPS	187	179	153	150	140	172	188	160	129	171	153	164	154	2,100	
		Total	237	250	214	198	195	223	237	227	183	237	190	224	208	2,823	
	OCEAN	Ocean North	CPS	149	161	148	132	110	139	132	147	126	113	144	132	149	1,782
CWS			30	38	36	33	35	36	46	42	39	32	36	54	45	502	
Total			179	199	184	165	145	175	178	189	165	145	180	186	194	2,284	
Ocean South		CPS	155	156	188	156	141	160	226	161	168	178	144	171	161	2,165	
		CWS	35	56	44	51	30	49	52	37	48	51	40	41	47	581	
		Total	190	212	232	207	171	209	278	198	216	229	184	212	208	2,746	
County Totals		CPS	304	317	336	288	251	299	358	308	294	291	288	303	310	3,947	
		Total	369	411	416	372	316	384	456	387	381	374	364	398	402	5,030	
PASSAIC		Passaic Central	CPS	184	203	159	128	112	140	182	161	179	132	149	161	143	2,033
	CWS		50	55	60	49	34	53	53	53	59	44	45	77	63	695	
	Total		234	258	219	177	146	193	235	214	238	176	194	238	206	2,728	
	Passaic North	CPS	176	176	131	122	113	153	141	119	140	128	148	138	137	1,822	
		CWS	62	44	52	41	40	38	51	49	39	57	45	67	46	631	
	County Totals	CPS	360	379	290	250	225	293	323	280	319	260	297	299	280	3,855	
		Total	472	478	402	340	299	384	427	382	417	361	387	443	389	5,181	
	SALEM	Salem	CPS	67	66	54	57	69	82	80	41	52	64	47	52	84	815
CWS			12	19	21	19	13	19	16	9	14	23	13	19	12	209	
Total			79	85	75	76	82	101	96	50	66	87	60	71	96	1,024	
County Totals		CPS	67	66	54	57	69	82	80	41	52	64	47	52	84	815	
		Total	79	85	75	76	82	101	96	50	66	87	60	71	96	1,024	
SOMERSET	Somerset	CPS	133	120	137	102	93	110	116	95	98	100	101	111	117	1,433	
		CWS	38	39	43	23	26	29	36	39	34	26	30	42	37	442	
		Total	171	159	180	125	119	139	152	134	132	126	131	153	154	1,875	
	County Totals	CPS	133	120	137	102	93	110	116	95	98	100	101	111	117	1,433	
		Total	171	159	180	125	119	139	152	134	132	126	131	153	154	1,875	

Table 5: Monthly Count of CPS Reports and CWS Referrals Assigned to CP&P Local Offices

County	Local Office	Type of Referral													Total	
			Apr 2014	May 2014	Jun 2014	Jul 2014	Aug 2014	Sep 2014	Oct 2014	Nov 2014	Dec 2014	Jan 2015	Feb 2015	Mar 2015		Apr 2015
SUSSEX	Sussex	CPS	87	88	71	73	55	59	60	71	70	66	64	80	84	928
		CWS	19	28	21	23	20	28	24	25	21	20	21	29	20	299
		Total	106	116	92	96	75	87	84	96	91	86	85	109	104	1,227
	County Totals	CPS	87	88	71	73	55	59	60	71	70	66	64	80	84	928
		CWS	19	28	21	23	20	28	24	25	21	20	21	29	20	299
		Total	106	116	92	96	75	87	84	96	91	86	85	109	104	1,227
UNION	Union Central	CPS	93	69	73	59	36	63	94	81	67	91	75	86	81	968
		CWS	19	20	21	24	20	21	37	17	15	21	19	30	21	285
		Total	112	89	94	83	56	84	131	98	82	112	94	116	102	1,253
	Union East	CPS	110	79	92	63	49	69	94	83	82	72	73	92	85	1,043
		CWS	34	25	38	26	26	28	26	28	27	34	24	43	27	386
		Total	144	104	130	89	75	97	120	111	109	106	97	135	112	1,429
	Union West	CPS	67	88	59	47	58	83	78	80	69	75	66	81	64	915
		CWS	24	25	20	26	15	22	25	22	28	29	21	28	29	314
		Total	91	113	79	73	73	105	103	102	97	104	87	109	93	1,229
	County Totals	CPS	270	236	224	169	143	215	266	244	218	238	214	259	230	2,926
		CWS	77	70	79	76	61	71	88	67	70	84	64	101	77	985
		Total	347	306	303	245	204	286	354	311	288	322	278	360	307	3,911
WARREN	Warren	CPS	76	76	72	66	54	72	96	64	74	68	87	66	82	953
		CWS	27	23	27	11	19	21	17	23	28	29	32	26	19	302
		Total	103	99	99	77	73	93	113	87	102	97	119	92	101	1,255
	County Totals	CPS	76	76	72	66	54	72	96	64	74	68	87	66	82	953
		CWS	27	23	27	11	19	21	17	23	28	29	32	26	19	302
		Total	103	99	99	77	73	93	113	87	102	97	119	92	101	1,255
County CPS Referral Total		CPS	4,751	5,097	4,472	3,922	3,406	4,387	5,122	3,973	4,164	4,252	4,250	4,849	4,614	57,259
County CWS Referral Total		CWS	1,358	1,542	1,420	1,170	1,157	1,413	1,490	1,373	1,402	1,337	1,290	1,536	1,341	17,829
County Referral Total		Total	6,109	6,639	5,892	5,092	4,563	5,800	6,612	5,346	5,566	5,589	5,540	6,385	5,955	75,088
Central Region IAIU		CPS	60	75	60	54	40	55	70	54	61	48	50	50	51	728
		CWS	0	0	0	0	0	0	0	0	0	0	0	0	0	0
		Total	60	75	60	54	40	55	70	54	61	48	50	50	51	728
Metro Region IAIU		CPS	63	57	69	43	25	47	70	45	49	53	59	67	54	701
		CWS	0	0	0	0	1	0	1	0	0	0	0	0	0	2
		Total	63	57	69	43	26	47	71	45	49	53	59	67	54	703
Northern Region IAIU		CPS	60	85	59	50	41	58	80	47	67	62	61	73	70	813
		CWS	0	0	0	0	0	0	0	0	0	0	0	0	0	0
		Total	60	85	59	50	41	58	80	47	67	62	61	73	70	813
Southern Region IAIU		CPS	79	106	74	61	52	64	85	59	89	60	68	68	78	943
		CWS	0	0	0	0	0	0	0	0	0	0	0	0	0	0
		Total	79	106	74	61	52	64	85	59	89	60	68	68	78	943
IAIU CPS Subtotal		CPS	262	323	262	208	158	224	305	205	266	223	238	258	253	3,185
IAIU CWS Subtotal		CWS	0	0	0	0	1	1	0	0	0	0	0	0	2	
IAIU Subtotal		Total	262	323	262	208	159	225	305	205	266	223	238	258	253	3,187
County and IAIU CPS Subtotal		CPS	5,013	5,420	4,734	4,130	3,564	4,611	5,427	4,178	4,430	4,475	4,488	5,107	4,867	60,444
County and IAIU CWS Subtotal		CWS	1,358	1,542	1,420	1,170	1,158	1,414	1,490	1,373	1,402	1,337	1,290	1,536	1,341	17,831
Unable to Determine⁽¹⁾		Total	143	171	156	149	129	141	174	117	123	127	138	118	141	1,827
Other Offices		Total	2	3	3	0	0	0	4	2	1	1	3	6	2	27
Grand Total		Total	6,516	7,136	6,313	5,449	4,851	6,166	7,095	5,670	5,956	5,940	5,919	6,767	6,351	80,129

⁽¹⁾CPS Reports or CWS Referrals not assigned to an office through the Assignment Designee, but were assigned to an office for an assessment or investigation.