



Child Protection and Permanency

Monthly Screening and Investigation Report May 2015

Allison Blake, Ph.D., L.S.W.
Commissioner

June 19, 2015



Table of Contents

Table 1: NJ State Central Registry Activity: Monthly Child Abuse and Neglect Hotline Calls, Intakes and Assignments to Child Protection & Permanency (CP&P) Offices

Chart 1: CP&P Annual Trends in Child Protection Services (CPS) Reports and Child Welfare Services (CWS) Referrals

Table 2: Assignments to CP&P Offices: CPS Reports and CWS Referrals

Table 3: Source of CPS Reports and CWS Referrals

Table 4: Monthly Count of CPS Reports and CWS Referrals Assigned to Counties

Table 5: Monthly Count of CPS Reports and CWS Referrals Assigned to CP&P Local Offices

Table 1: NJ State Central Registry Activity: Monthly Child Abuse and Neglect Hotline Calls, Intakes and Assignments to CP&P Offices^{1,2,7}

2014 - 2015	Hotline Call Activity				Intakes Recorded in NJ SPIRIT ^{6,8}												Assignments to CP&P Offices				
	Total Calls to SCR ³	Abandon Calls ⁴	Average Time to Answer (seconds)	Resulting NJS Intakes ⁵	CPS Reports		CWS Referrals		No Action Required (NAR)		Related Information (RI)		Information & Referral (I&R)		Information Only (IO)		CPS Reports		CWS Referrals		Total
					n	%	n	%	n	%	n	%	n	%	n	%	n	%	n	%	
May 2014	15,690	717	31	17,101	5,501	32.2%	1,635	9.6%	396	2.3%	4,444	26.0%	1,816	10.6%	3,309	19.3%	5,501	77.1%	1,635	22.9%	7,136
June 2014	13,809	465	27	15,171	4,796	31.6%	1,516	10.0%	402	2.6%	4,028	26.6%	1,625	10.7%	2,804	18.5%	4,796	76.0%	1,517	24.0%	6,313
July 2014	12,308	344	21	13,784	4,202	30.5%	1,247	9.0%	384	2.8%	3,758	27.3%	1,487	10.8%	2,706	19.6%	4,202	77.1%	1,247	22.9%	5,449
August 2014	11,306	277	17	12,610	3,629	28.8%	1,222	9.7%	331	2.6%	3,314	26.3%	1,321	10.5%	2,793	22.1%	3,629	74.8%	1,222	25.2%	4,851
September 2014	13,664	359	22	15,190	4,668	30.7%	1,496	9.8%	393	2.6%	3,949	26.0%	1,792	11.8%	2,892	19.0%	4,668	75.7%	1,498	24.3%	6,166
October 2014	15,268	435	26	16,868	5,510	32.7%	1,584	9.4%	555	3.3%	4,259	25.2%	1,946	11.5%	3,014	17.9%	5,509	77.6%	1,586	22.4%	7,095
November 2014	12,649	391	28	13,938	4,254	30.5%	1,416	10.2%	297	2.1%	3,895	27.9%	1,473	10.6%	2,603	18.7%	4,254	75.0%	1,416	25.0%	5,670
December 2014	13,289	468	29	14,588	4,511	30.9%	1,449	9.9%	303	2.1%	3,888	26.7%	1,620	11.1%	2,817	19.3%	4,509	75.7%	1,447	24.3%	5,956
January 2015	13,991	761	34	15,030	4,549	30.3%	1,390	9.2%	387	2.6%	3,939	26.2%	1,591	10.6%	3,174	21.1%	4,549	76.6%	1,391	23.4%	5,940
February 2015	12,881	537	35	14,010	4,573	32.6%	1,342	9.6%	418	3.0%	3,494	24.9%	1,516	10.8%	2,667	19.0%	4,574	77.3%	1,345	22.7%	5,919
March 2015	14,805	486	30	16,174	5,187	32.1%	1,580	9.8%	363	2.2%	4,021	24.9%	1,811	11.2%	3,212	19.9%	5,187	76.7%	1,580	23.3%	6,767
April 2015	13,698	409	26	15,107	4,967	32.9%	1,381	9.1%	366	2.4%	3,900	25.8%	1,615	10.7%	2,878	19.1%	4,967	78.2%	1,384	21.8%	6,351
May 2015	15,466	583	39	16,769	5,457	32.5%	1,560	9.3%	340	2.0%	4,437	26.5%	1,874	11.2%	3,101	18.5%	5,457	77.8%	1,561	22.2%	7,018
Monthly Average	13,756	479	28	15,103	4,754	31.5%	1,448	9.6%	380	2.5%	3,948	26.1%	1,653	10.9%	2,921	19.3%	4,754	76.6%	1,448	23.4%	6,202
Overall Total	178,824	6,232		196,340	61,804		18,818		4,935		51,326		21,487		37,970		61,802	76.6%	18,829	23.4%	80,631

¹ Comes from three distinct sources: (1) the Automatic Call Distribution (ACD) phone system; which keeps a count of the number of calls and call routing; (2) Monthly NJSpirit Intakes; which record decision making on calls received by hotline screeners, and (3) NJSpirit extracts of assigned CWS Referrals and CPS Reports.

² The number of Intakes, CPS Reports, and CWS Referrals are based on an extract from NJSpirit. Data extracted by the Office of Research, Evaluation, and Reporting on **June 11, 2015** includes all Intakes, CPS Reports, and CWS Referrals received from **May 1, 2015 through May 31, 2015**.

³ The number calls received through the ACD System that were directed to a screener from any call-in phone number.

⁴ The number of calls received through the ACD System that are abandoned either while waiting in queue or while ringing.

⁵ The number of Intakes entered in NJSpirit from the number of calls received.

⁶ The number of Intakes recorded in NJSpirit, by type of Intake. There is not a one-to-one relationship between an ACD call and an Intake; multiple calls to State Central Registry (SCR) may result in a single Intake, or one call may result in multiple Intakes.

⁷ Intake: The process of documenting: a report of alleged abuse or neglect of a child (CPS); a request for services on behalf of a child, or a referral of a child for services (CWS); a call in which the caller provides additional or clarifying information about a current service case or active investigation (RI); informing a caller of, or referring a caller to, services available from other private or public sources (I&R); a call that requires no action by CP&P (NAR); or a response to a simple inquiry (IO).

⁸ NJ SPIRIT: NJ Statewide Protection Investigation and Reporting Information Tool case management system

CP&P Annual Trends in CPS Reports and CWS Referrals

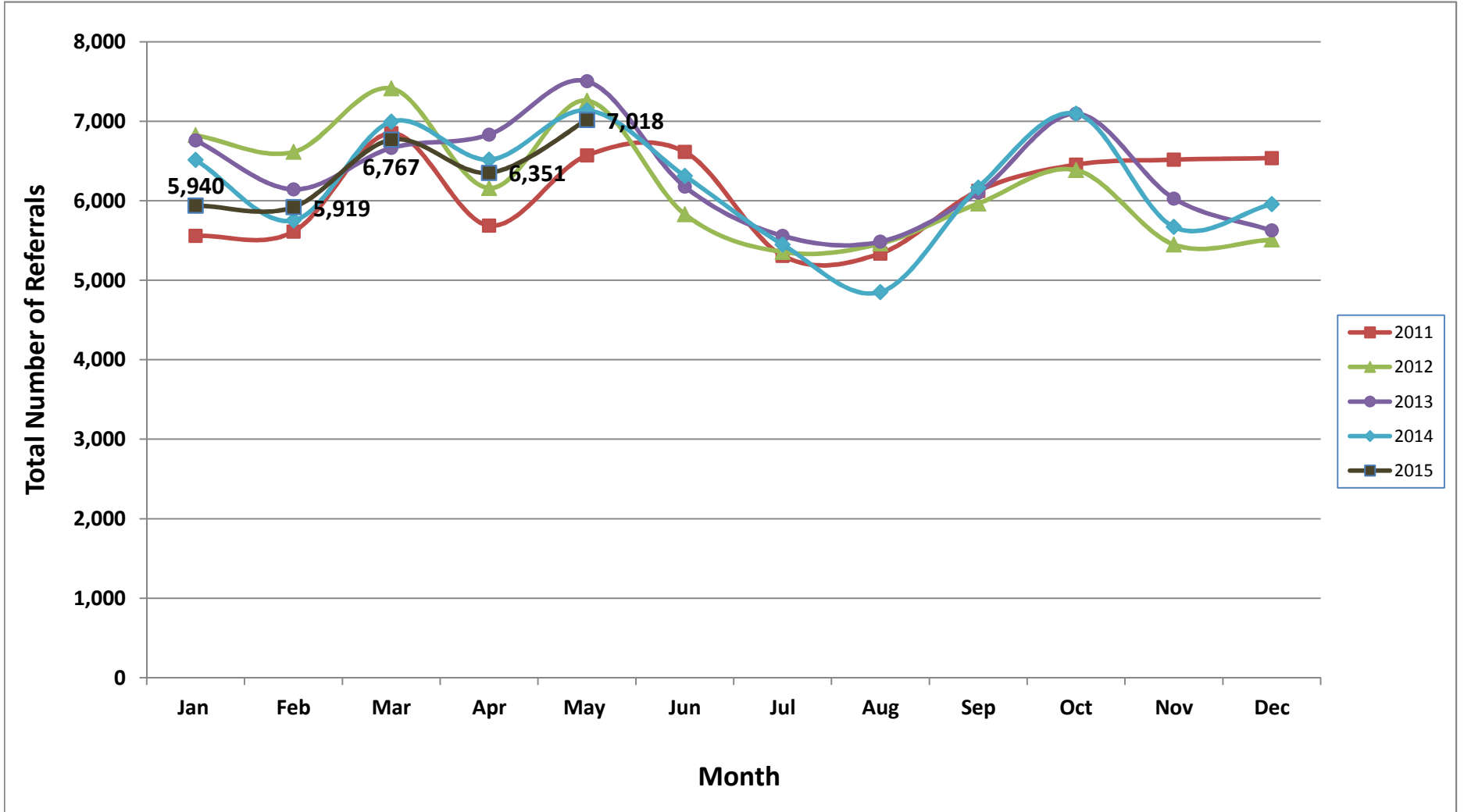


Table 2: Assignments to CP&P Offices: CPS Reports and CWS Referrals¹

Intake Date ³		CPS Reports ²	CWS Referrals ²	Total Assignments ²
2010	Jan 2010	5,154	963	6,117
	Feb 2010	4,446	804	5,250
	Mar 2010	6,314	1,147	7,461
	Apr 2010	5,465	1,040	6,505
	May 2010	5,797	1,177	6,974
	Jun 2010	5,734	1,157	6,891
	Jul 2010	4,270	1,017	5,287
	Aug 2010	4,110	1,028	5,138
	Sep 2010	4,922	1,012	5,934
	Oct 2010	5,105	1,136	6,241
	Nov 2010	4,842	1,028	5,870
	Dec 2010	4,472	909	5,381
	Total	60,631	12,418	73,049
2011	Jan 2011	4,616	942	5,558
	Feb 2011	4,672	939	5,611
	Mar 2011	5,701	1,148	6,849
	Apr 2011	4,682	1,005	5,687
	May 2011	5,362	1,207	6,569
	Jun 2011	5,299	1,315	6,614
	Jul 2011	4,200	1,108	5,308
	Aug 2011	4,170	1,166	5,336
	Sep 2011	4,872	1,253	6,125
	Oct 2011	5,322	1,132	6,454
	Nov 2011	5,220	1,296	6,516
	Dec 2011	5,363	1,173	6,536
	Total	59,479	13,684	73,163
2012	Jan 2012	5,530	1,294	6,824
	Feb 2012	5,358	1,255	6,613
	Mar 2012	5,985	1,428	7,413
	Apr 2012	4,899	1,259	6,158
	May 2012	5,874	1,385	7,259
	Jun 2012	4,640	1,190	5,830
	Jul 2012	4,254	1,101	5,355
	Aug 2012	4,325	1,135	5,460
	Sep 2012	4,769	1,196	5,965
	Oct 2012	5,178	1,207	6,385
	Nov 2012	4,310	1,138	5,448
	Dec 2012	4,394	1,116	5,510
	Total	59,516	14,704	74,220

Table 2: Assignments to CP&P Offices: CPS Reports and CWS Referrals¹

Intake Date ³		CPS Reports ²	CWS Referrals ²	Total Assignments ²
2013	Jan 2013	5,464	1,296	6,760
	Feb 2013	4,966	1,177	6,143
	Mar 2013	5,355	1,309	6,664
	Apr 2013	5,430	1,402	6,832
	May 2013	5,993	1,510	7,503
	Jun 2013	4,947	1,230	6,177
	Jul 2013	4,330	1,228	5,558
	Aug 2013	4,330	1,155	5,485
	Sep 2013	4,851	1,251	6,102
	Oct 2013	5,614	1,481	7,095
	Nov 2013	4,694	1,334	6,028
	Dec 2013	4,397	1,229	5,626
	Total	60,371	15,602	75,973
2014	Jan 2014	5,097	1,416	6,513
	Feb 2014	4,457	1,295	5,752
	Mar 2014	5,408	1,586	6,994
	Apr 2014	5,049	1,467	6,516
	May 2014	5,501	1,635	7,136
	Jun 2014	4,796	1,517	6,313
	Jul 2014	4,202	1,247	5,449
	Aug 2014	3,629	1,222	4,851
	Sep 2014	4,668	1,498	6,166
	Oct 2014	5,509	1,586	7,095
	Nov 2014	4,254	1,416	5,670
	Dec 2014	4,509	1,447	5,956
	Total	57,079	17,332	74,411
2015	Jan 2015	4,549	1,391	5,940
	Feb 2015	4,574	1,345	5,919
	Mar 2015	5,187	1,580	6,767
	Apr 2015	4,967	1,384	6,351
	May 2015	5,457	1,561	7,018
	Total	24,734	7,261	31,995
Grand Total		321,810	81,001	402,811

¹Source of Data: NJ SPIRIT

²A CPS Report or a CWS Referral may include multiple children in a family, with one or more allegation or request for services. In these cases, each CPS Report or CWS Referral is counted once - the CPS Report or the CWS Referral is the unit of analysis rather than the child.

³Prior to January 2014, the number of CPS Reports and CWS Referrals was based on the type of assignment of the CPS Report or CWS Referral. Beginning in January 2014, the number of CPS Reports and CWS Referrals is based on the number of CPS Reports and CWS Referrals received.

Table 3: Source of CPS Reports and CWS Referrals

	Source	May 2014	Jun 2014	Jul 2014	Aug 2014	Sep 2014	Oct 2014	Nov 2014	Dec 2014	Jan 2015	Feb 2015	Mar 2015	Apr 2015	May 2015		13 Month Total	
CPS Reports and CWS Referrals	School Staff	1,861	1,216	200	90	1,200	1,935	1,395	1,481	1,504	1,629	1,894	1,487	1,868	27%	17,760	22%
	Healthcare Provider	818	806	860	704	774	824	735	774	701	720	825	861	812	12%	10,214	13%
	Law Enforcement	994	955	961	934	922	898	835	820	870	783	933	925	1056	15%	11,886	15%
	Government Agency	504	472	480	429	470	474	350	402	362	377	465	445	370	5%	5,600	7%
	Parent	666	554	593	549	591	603	517	520	510	506	539	493	578	8%	7,219	9%
	Relative/Friend/Neighbor	577	596	688	586	553	568	418	406	468	393	491	484	540	8%	6,768	8%
	Anonymous	741	723	609	640	661	772	614	659	612	607	687	641	802	11%	8,768	11%
	CP&P	128	148	139	111	119	113	94	113	109	120	110	117	103	1%	1,524	2%
	Court/Legal	116	120	138	122	111	129	78	114	118	95	108	116	128	2%	1,493	2%
	Community Group/Individual	269	241	274	241	271	270	209	211	233	263	260	295	266	4%	3,303	4%
	Facility Staff (incl Correctional Facility)	69	96	94	88	72	92	82	89	107	79	71	106	76	1%	1,121	1%
	Child (Self)	44	56	52	38	63	47	42	46	40	35	39	37	49	1%	588	1%
	Other	334	318	350	312	342	354	293	308	291	298	328	332	353	5%	4,213	5%
	Daycare/Babysitter	15	12	11	7	17	16	8	13	15	14	17	12	17	0%	174	0%
	Total	7,136	6,313	5,449	4,851	6,166	7,095	5,670	5,956	5,940	5,919	6,767	6,351	7,018		80,631	

Table 4: Monthly Count of CPS Reports and CWS Referrals Assigned to Counties

County														Average # of Assignments the Last 12 Months
	May 2014	Jun 2014	Jul 2014	Aug 2014	Sep 2014	Oct 2014	Nov 2014	Dec 2014	Jan 2015	Feb 2015	Mar 2015	Apr 2015	May 2015	
Atlantic	288	234	229	221	233	292	234	245	233	210	269	277	275	246
Bergen	378	295	228	235	337	392	328	323	323	324	386	335	382	324
Burlington	351	279	242	248	251	335	238	277	269	305	285	319	322	281
Camden	567	528	490	400	537	594	502	464	487	505	534	506	551	508
Cape May	112	64	96	92	95	87	59	71	82	68	93	85	80	81
Cumberland	247	210	218	147	214	224	189	207	213	201	253	217	249	212
Essex	753	632	536	516	630	725	579	622	617	597	769	699	779	642
Gloucester	297	295	254	206	261	300	228	232	238	223	276	288	244	254
Hudson	509	466	338	275	446	532	349	398	414	396	442	382	546	415
Hunterdon	59	41	57	39	50	47	33	65	30	52	45	50	51	47
209	299	279	246	203	261	294	246	230	244	209	264	244	249	247
Middlesex	475	400	336	284	413	458	341	418	424	464	479	418	471	409
Monmouth	400	388	293	334	375	413	346	354	325	373	440	374	378	366
Morris	250	214	198	195	223	237	227	183	237	190	224	208	246	215
Ocean	411	416	372	316	384	456	387	381	374	364	398	402	418	389
Passaic	478	402	340	299	384	427	382	417	361	387	443	389	534	397
Salem	85	75	76	82	101	96	50	66	87	60	71	96	105	80
Somerset	159	180	125	119	139	152	134	132	126	131	153	154	178	144
Sussex	116	92	96	75	87	84	96	91	86	85	109	104	97	92
Union	306	303	245	204	286	354	311	288	322	278	360	307	299	296
Warren	99	99	77	73	93	113	87	102	97	119	92	101	117	98
County Subtotals	6,639	5,892	5,092	4,563	5,800	6,612	5,346	5,566	5,589	5,541	6,385	5,955	6,571	5,743
Central Region IAIU	75	60	54	40	55	70	54	61	48	50	50	51	54	54
Metro Region IAIU	57	69	43	26	47	70	45	49	53	58	67	54	70	54
Northern Region IAIU	85	59	50	41	58	80	47	67	62	61	73	70	80	62
Southern Region IAIU	106	74	61	52	64	85	59	89	60	68	68	78	97	71
IAIU Subtotals	323	262	208	159	224	305	205	266	223	237	258	253	301	242
Unable to Determine¹	171	156	149	129	141	174	117	123	127	138	118	141	144	138
Other Offices	3	3	0	0	1	4	2	1	1	3	6	2	2	2
Grand Total	7,136	6,313	5,449	4,851	6,166	7,095	5,670	5,956	5,940	5,919	6,767	6,351	7,018	6,125

¹CPS Reports or CWS Referrals not assigned to an office through the Assignment Designee, but were assigned to an office for an assessment or investigation.

Table 5: Monthly Count of CPS Reports and CWS Referrals Assigned to CP&P Local Offices

County	Local Office	Type of Referral	Apr 2014	May 2014	Jun 2014	Jul 2014	Aug 2014	Sep 2014	Oct 2014	Nov 2014	Dec 2014	Jan 2015	Feb 2015	Mar 2015	Apr 2015	May 2015	Total
ATLANTIC	Atlantic East	CPS	117	124	94	104	98	108	125	100	120	106	77	116	134	121	1,544
		CWS	28	32	27	23	32	23	35	36	24	29	26	32	32	38	417
		Total	145	156	121	127	130	131	160	136	144	135	103	148	166	159	1,961
	Atlantic West	CPS	75	107	89	75	71	82	103	75	77	76	85	101	86	96	1,198
		CWS	22	25	24	27	20	20	29	23	24	22	22	20	25	20	323
		Total	97	132	113	102	91	102	132	98	101	98	107	121	111	116	1,521
	County Totals	CPS	192	231	183	179	169	190	228	175	197	182	162	217	220	217	2,742
		CWS	50	57	51	50	52	43	64	59	48	51	48	52	57	58	740
		Total	242	288	234	229	221	233	292	234	245	233	210	269	277	275	3,482
BERGEN	Bergen Central	CPS	115	121	97	68	67	107	111	109	94	97	94	103	110	123	1,416
		CWS	39	45	31	23	24	38	51	49	39	39	32	37	36	34	517
		Total	154	166	128	91	91	145	162	158	133	136	126	140	146	157	1,933
	Bergen South	CPS	136	163	129	99	102	142	181	124	136	144	144	183	133	175	1,991
		CWS	44	49	38	38	42	50	49	46	54	43	54	63	56	50	676
		Total	180	212	167	137	144	192	230	170	190	187	198	246	189	225	2,667
	County Totals	CPS	251	284	226	167	169	249	292	233	230	241	238	286	243	298	3,407
		CWS	83	94	69	61	66	88	100	95	93	82	86	100	92	84	1,193
		Total	334	378	295	228	235	337	392	328	323	323	324	386	335	382	4,600
BURLINGTON	Burlington East	CPS	119	132	103	98	89	88	115	107	110	110	116	105	138	125	1,555
		CWS	23	37	32	27	35	32	38	25	30	25	33	29	28	37	431
		Total	142	169	135	125	124	120	153	132	140	135	149	134	166	162	1,986
	Burlington West	CPS	133	141	111	94	90	89	145	80	100	104	121	119	117	122	1,566
		CWS	37	41	33	23	34	42	37	26	37	30	35	32	36	38	481
		Total	170	182	144	117	124	131	182	106	137	134	156	151	153	160	2,047
	County Totals	CPS	252	273	214	192	179	177	260	187	210	214	237	224	255	247	3,121
		CWS	60	78	65	50	69	74	75	51	67	55	68	61	64	75	912
		Total	312	351	279	242	248	251	335	238	277	269	305	285	319	322	4,033
CAMDEN	Camden Central	CPS	127	110	127	111	97	109	151	100	103	123	123	127	115	122	1,645
		CWS	37	48	39	34	30	35	26	28	23	35	28	23	38	29	453
		Total	164	158	166	145	127	144	177	128	126	158	151	150	153	151	2,098
	Camden East	CPS	112	118	101	94	82	92	116	91	93	74	93	89	102	119	1,376
		CWS	34	21	38	27	18	46	37	39	24	31	19	30	31	30	425
		Total	146	139	139	121	100	138	153	130	117	105	112	119	133	149	1,801
	Camden North	CPS	107	96	104	91	71	95	122	105	73	89	85	106	89	101	1,334
		CWS	39	41	31	27	15	25	23	28	33	31	29	33	31	33	419
		Total	146	137	135	118	86	120	145	133	106	120	114	139	120	134	1,753
	Camden South	CPS	75	101	62	82	64	94	92	88	84	78	96	97	88	92	1,193
		CWS	16	32	26	24	23	41	27	23	31	26	32	29	12	25	367
		Total	91	133	88	106	87	135	119	111	115	104	128	126	100	117	1,560
	County Totals	CPS	421	425	394	378	314	390	481	384	353	364	397	419	394	434	5,548
		CWS	126	142	134	112	86	147	113	118	111	123	108	115	112	117	1,664
		Total	547	567	528	490	400	537	594	502	464	487	505	534	506	551	7,212
CAPE MAY	Cape May	CPS	69	92	45	70	76	74	73	47	54	63	54	78	63	66	924
		CWS	18	20	19	26	16	21	14	12	17	19	14	15	22	14	247
		Total	87	112	64	96	92	95	87	59	71	82	68	93	85	80	1,171
	County Totals	CPS	69	92	45	70	76	74	73	47	54	63	54	78	63	66	924
		CWS	18	20	19	26	16	21	14	12	17	19	14	15	22	14	247
		Total	87	112	64	96	92	95	87	59	71	82	68	93	85	80	1,171
CUMBERLAND	Cumberland East	CPS	51	64	57	67	30	55	69	56	43	51	52	63	50	70	778
		CWS	21	18	22	5	18	18	17	14	22	16	16	15	12	25	239
		Total	72	82	79	72	48	73	86	70	65	67	68	78	62	95	1,017
	Cumberland West	CPS	120	132	109	121	70	116	102	91	107	121	105	143	117	123	1,577
		CWS	30	33	22	25	29	25	36	28	35	25	28	32	38	31	417
		Total	150	165	131	146	99	141	138	119	142	146	133	175	155	154	1,994
	County Totals	CPS	171	196	166	188	100	171	171	147	150	172	157	206	167	193	2,355
		CWS	51	51	44	30	47	43	53	42	57	41	44	47	50	56	656
		Total	222	247	210	218	147	214	224	189	207	213	201	253	217	249	3,011

Table 5: Monthly Count of CPS Reports and CWS Referrals Assigned to CP&P Local Offices

County	Local Office	Type of Referral	Month														Total
			Apr 2014	May 2014	Jun 2014	Jul 2014	Aug 2014	Sep 2014	Oct 2014	Nov 2014	Dec 2014	Jan 2015	Feb 2015	Mar 2015	Apr 2015	May 2015	
ESSEX	Essex Central	CPS	93	95	98	76	67	84	104	73	77	97	68	92	105	118	1,247
		CWS	26	36	28	28	20	30	42	36	36	34	31	25	32	36	440
		Total	119	131	126	104	87	114	146	109	113	131	99	117	137	154	1,687
	Essex North	CPS	68	78	56	37	43	68	65	61	59	50	48	63	78	75	849
		CWS	18	29	26	13	14	21	25	20	16	14	23	26	20	20	285
		Total	86	107	82	50	57	89	90	81	75	64	71	89	98	95	1,134
	Essex South	CPS	64	63	66	42	55	50	61	48	61	70	70	95	75	71	891
		CWS	28	25	16	23	25	31	22	30	29	24	26	22	17	16	334
		Total	92	88	82	65	80	81	83	78	90	94	96	117	92	87	1,225
	Newark Center City	CPS	79	85	80	73	62	83	90	68	91	75	74	110	90	106	1,166
		CWS	26	46	28	19	30	33	40	28	24	19	21	33	15	40	402
		Total	105	131	108	92	92	116	130	96	115	94	95	143	105	146	1,568
	Newark Northeast	CPS	77	103	74	83	70	78	97	80	68	74	101	107	106	94	1,212
		CWS	34	39	41	22	25	27	28	25	40	36	27	45	27	34	450
		Total	111	142	115	105	95	105	125	105	108	110	128	152	133	128	1,662
Newark South	CPS	114	112	88	91	69	93	124	80	88	94	81	120	97	127	1,378	
	CWS	36	42	31	29	36	32	27	30	33	30	26	31	37	42	462	
	Total	150	154	119	120	105	125	151	110	121	124	107	151	134	169	1,840	
County Totals	CPS	495	536	462	402	366	456	541	410	444	460	442	587	551	591	6,743	
	CWS	168	217	170	134	150	174	184	169	178	157	154	182	148	188	2,373	
	Total	663	753	632	536	516	630	725	579	622	617	596	769	699	779	9,116	
GLOUCESTER	Gloucester East	CPS	82	114	112	94	73	90	101	85	85	95	96	110	114	1,339	
		CWS	27	31	22	21	25	28	37	39	28	18	20	29	34	377	
		Total	109	145	134	115	98	118	138	124	113	113	116	139	148	106	1,716
	Gloucester West	CPS	107	116	125	103	82	119	126	74	96	96	80	113	115	114	1,466
		CWS	18	36	36	36	26	24	36	30	23	29	27	24	25	24	394
		Total	125	152	161	139	108	143	162	104	119	125	107	137	140	138	1,860
	County Totals	CPS	189	230	237	197	155	209	227	159	181	191	176	223	229	202	2,805
CWS		45	67	58	57	51	52	73	69	51	47	47	53	59	42	771	
Total		234	297	295	254	206	261	300	228	232	238	223	276	288	244	3,576	
HUDSON	Hudson Central	CPS	80	96	84	74	58	76	94	49	56	73	84	90	89	1,115	
		CWS	22	32	19	28	28	34	33	31	29	27	25	30	30	390	
		Total	102	128	103	102	86	110	127	80	85	100	109	120	119	134	1,505
	Hudson North	CPS	86	93	98	48	34	90	99	53	74	69	70	73	65	107	1,059
		CWS	19	25	32	19	17	25	33	23	26	30	22	29	19	28	347
		Total	105	118	130	67	51	115	132	76	100	99	92	102	84	135	1,406
	Hudson South	CPS	83	93	88	66	43	88	95	59	88	77	80	87	70	103	1,120
		CWS	33	41	29	19	31	21	36	30	17	23	32	31	23	46	412
		Total	116	134	117	85	74	109	131	89	105	100	112	118	93	149	1,532
	Hudson West	CPS	90	102	92	63	43	87	113	85	81	86	65	77	71	103	1,158
		CWS	24	27	24	21	21	25	29	19	27	29	18	25	15	25	329
		Total	114	129	116	84	64	112	142	104	108	115	83	102	86	128	1,487
County Totals	CPS	339	384	362	251	178	341	401	246	299	305	299	327	295	425	4,452	
	CWS	98	125	104	87	97	105	131	103	99	109	97	115	87	121	1,478	
	Total	437	509	466	338	275	446	532	349	398	414	396	442	382	546	5,930	
HUNTERDON	Hunterdon	CPS	39	40	33	44	32	34	38	23	46	19	39	28	33	480	
		CWS	11	19	8	13	7	16	9	10	19	11	13	17	17	189	
		Total	50	59	41	57	39	50	47	33	65	30	52	45	50	51	669
	County Totals	CPS	39	40	33	44	32	34	38	23	46	19	39	28	33	480	
CWS		11	19	8	13	7	16	9	10	19	11	13	17	17	189		
Total		50	59	41	57	39	50	47	33	65	30	52	45	50	51	669	
MERCER	Mercer North	CPS	93	105	102	87	79	89	123	96	81	97	78	82	98	1,304	
		CWS	28	43	38	25	27	35	28	42	30	30	29	43	23	448	
		Total	121	148	140	112	106	124	151	138	111	127	107	125	121	121	1,752
	Mercer South	CPS	123	128	109	106	74	112	117	88	96	87	75	110	94	96	1,415
		CWS	35	23	30	28	23	25	26	20	23	30	27	29	29	32	380
		Total	158	151	139	134	97	137	143	108	119	117	102	139	123	128	1,795
	County Totals	CPS	216	233	211	193	153	201	240	184	177	184	153	192	192	190	2,719
CWS		63	66	68	53	50	60	54	62	53	60	56	72	52	59	828	
Total		279	299	279	246	203	261	294	246	230	244	209	264	244	249	3,547	

Table 5: Monthly Count of CPS Reports and CWS Referrals Assigned to CP&P Local Offices

County	Local Office	Type of Referral	Apr 2014	May 2014	Jun 2014	Jul 2014	Aug 2014	Sep 2014	Oct 2014	Nov 2014	Dec 2014	Jan 2015	Feb 2015	Mar 2015	Apr 2015	May 2015	Total
MIDDLESEX	Middlesex Central	CPS	78	87	79	65	51	81	90	54	64	77	75	83	85	89	1,058
		CWS	22	20	19	19	22	22	24	14	24	27	16	20	21	27	297
		Total	100	107	98	84	73	103	114	68	88	104	91	103	106	116	1,355
	Middlesex Coastal	CPS	135	149	122	118	92	103	137	105	121	131	135	154	122	151	1,775
		CWS	34	28	34	20	17	47	38	36	37	32	46	49	34	37	489
		Total	169	177	156	138	109	150	175	141	158	163	181	203	156	188	2,264
	Middlesex West	CPS	136	162	109	87	81	119	134	86	124	129	155	139	122	138	1,721
		CWS	33	29	37	27	21	41	35	46	48	28	37	34	34	29	479
		Total	169	191	146	114	102	160	169	132	172	157	192	173	156	167	2,200
	County Totals	CPS	349	398	310	270	224	303	361	245	309	337	365	376	329	378	4,554
		CWS	89	77	90	66	60	110	97	96	109	87	99	103	89	93	1,265
		Total	438	475	400	336	284	413	458	341	418	424	464	479	418	471	5,819
MONMOUTH	Monmouth North	CPS	166	183	139	125	142	156	169	141	142	153	158	181	156	164	2,175
		CWS	57	35	52	39	41	45	49	32	50	30	50	47	40	43	610
		Total	223	218	191	164	183	201	218	173	192	183	208	228	196	207	2,785
	Monmouth South	CPS	117	131	153	111	119	134	153	129	118	109	122	171	146	128	1,841
		CWS	39	51	44	18	32	40	42	44	44	33	43	41	32	43	546
		Total	156	182	197	129	151	174	195	173	162	142	165	212	178	171	2,387
	County Totals	CPS	283	314	292	236	261	290	322	270	260	262	280	352	302	292	4,016
		CWS	96	86	96	57	73	85	91	76	94	63	93	88	72	86	1,156
		Total	379	400	388	293	334	375	413	346	354	325	373	440	374	378	5,172
	MORRIS	Morris East	CPS	85	82	66	70	53	87	80	69	62	70	70	80	84	74
CWS			17	39	29	22	25	19	24	28	25	30	21	28	21	23	351
Total			102	121	95	92	78	106	104	97	87	100	91	108	105	97	1,383
Morris West		CPS	102	97	87	80	87	85	108	91	67	101	83	84	70	102	1,244
		CWS	33	32	32	26	30	32	25	39	29	36	16	32	33	47	442
		Total	135	129	119	106	117	117	133	130	96	137	99	116	103	149	1,686
County Totals		CPS	187	179	153	150	140	172	188	160	129	171	153	164	154	176	2,276
		CWS	50	71	61	48	55	51	49	67	54	66	37	60	54	70	793
		Total	237	250	214	198	195	223	237	227	183	237	190	224	208	246	3,069
OCEAN		Ocean North	CPS	149	161	148	132	110	139	132	147	126	113	144	132	149	144
	CWS		30	38	36	33	35	36	46	42	39	32	36	54	45	52	554
	Total		179	199	184	165	145	175	178	189	165	145	180	186	194	196	2,480
	Ocean South	CPS	155	156	188	156	141	160	226	161	168	178	144	171	161	172	2,337
		CWS	35	56	44	51	30	49	52	37	48	51	40	41	47	50	631
		Total	190	212	232	207	171	209	278	198	216	229	184	212	208	222	2,968
	County Totals	CPS	304	317	336	288	251	299	358	308	294	291	288	303	310	316	4,263
		CWS	65	94	80	84	65	85	98	79	87	83	76	95	92	102	1,185
		Total	369	411	416	372	316	384	456	387	381	374	364	398	402	418	5,448
	PASSAIC	Passaic Central	CPS	184	203	159	128	112	140	182	161	179	132	149	161	143	221
CWS			50	55	60	49	34	53	53	53	59	44	45	77	63	67	762
Total			234	258	219	177	146	193	235	214	238	176	194	238	206	288	3,016
Passaic North		CPS	176	176	131	122	113	153	141	119	140	128	148	138	137	190	2,012
		CWS	62	44	52	41	40	38	51	49	39	57	45	67	46	56	687
		Total	238	220	183	163	153	191	192	168	179	185	193	205	183	246	2,699
County Totals		CPS	360	379	290	250	225	293	323	280	319	260	297	299	280	411	4,266
		CWS	112	99	112	90	74	91	104	102	98	101	90	144	109	123	1,449
		Total	472	478	402	340	299	384	427	382	417	361	387	443	389	534	5,715
SALEM		Salem	CPS	67	66	54	57	69	82	80	41	52	64	47	52	84	78
	CWS		12	19	21	19	13	19	16	9	14	23	13	19	12	27	236
	Total		79	85	75	76	82	101	96	50	66	87	60	71	96	105	1,129
	County Totals	CPS	67	66	54	57	69	82	80	41	52	64	47	52	84	78	893
		CWS	12	19	21	19	13	19	16	9	14	23	13	19	12	27	236
		Total	79	85	75	76	82	101	96	50	66	87	60	71	96	105	1,129
SOMERSET	Somerset	CPS	133	120	137	102	93	110	116	95	98	100	101	111	117	131	1,564
		CWS	38	39	43	23	26	29	36	39	34	26	30	42	37	47	489
		Total	171	159	180	125	119	139	152	134	132	126	131	153	154	178	2,053
	County Totals	CPS	133	120	137	102	93	110	116	95	98	100	101	111	117	131	1,564
		Total	171	159	180	125	119	139	152	134	132	126	131	153	154	178	2,053

Table 5: Monthly Count of CPS Reports and CWS Referrals Assigned to CP&P Local Offices

County	Local Office	Type of Referral	Month													Total	
			Apr 2014	May 2014	Jun 2014	Jul 2014	Aug 2014	Sep 2014	Oct 2014	Nov 2014	Dec 2014	Jan 2015	Feb 2015	Mar 2015	Apr 2015		May 2015
SUSSEX	Sussex	CPS	87	88	71	73	55	59	60	71	70	66	64	80	84	74	1,002
		CWS	19	28	21	23	20	28	24	25	21	20	21	29	20	23	322
		Total	106	116	92	96	75	87	84	96	91	86	85	109	104	97	1,324
	County Totals	CPS	87	88	71	73	55	59	60	71	70	66	64	80	84	74	1,002
		CWS	19	28	21	23	20	28	24	25	21	20	21	29	20	23	322
		Total	106	116	92	96	75	87	84	96	91	86	85	109	104	97	1,324
UNION	Union Central	CPS	93	69	73	59	36	63	94	81	67	91	75	86	81	85	1,053
		CWS	19	20	21	24	20	21	37	17	15	21	19	30	21	19	304
		Total	112	89	94	83	56	84	131	98	82	112	94	116	102	104	1,357
	Union East	CPS	110	79	92	63	49	69	94	83	82	72	73	92	85	69	1,112
		CWS	34	25	38	26	26	28	26	28	27	34	24	43	27	33	419
		Total	144	104	130	89	75	97	120	111	109	106	97	135	112	102	1,531
	Union West	CPS	67	88	59	47	58	83	78	80	69	75	66	81	64	71	986
		CWS	24	25	20	26	15	22	25	22	28	29	21	28	29	22	336
		Total	91	113	79	73	73	105	103	102	97	104	87	109	93	93	1,322
	County Totals	CPS	270	236	224	169	143	215	266	244	218	238	214	259	230	225	3,151
		CWS	77	70	79	76	61	71	88	67	70	84	64	101	77	74	1,059
		Total	347	306	303	245	204	286	354	311	288	322	278	360	307	299	4,210
WARREN	Warren	CPS	76	76	72	66	54	72	96	64	74	68	87	66	82	84	1,037
		CWS	27	23	27	11	19	21	17	23	28	29	32	26	19	33	335
		Total	103	99	99	77	73	93	113	87	102	97	119	92	101	117	1,372
	County Totals	CPS	76	76	72	66	54	72	96	64	74	68	87	66	82	84	1,037
		CWS	27	23	27	11	19	21	17	23	28	29	32	26	19	33	335
		Total	103	99	99	77	73	93	113	87	102	97	119	92	101	117	1,372
County CPS Referral Total		CPS	4,750	5,097	4,472	3,922	3,406	4,387	5,122	3,973	4,164	4,252	4,849	4,614	5,060	62,318	
County CWS Referral Total		CWS	1,358	1,542	1,420	1,170	1,157	1,413	1,490	1,373	1,402	1,337	1,290	1,536	1,341	1,511	19,340
County Referral Total		Total	6,108	6,639	5,892	5,092	4,563	5,800	6,612	5,346	5,566	5,589	6,385	6,385	6,571	81,658	
Central Region IAIU	CPS	60	75	60	54	40	55	70	54	61	48	50	50	51	54	782	
	CWS	0	0	0	0	0	0	0	0	0	0	0	0	0	0	0	
	Total	60	75	60	54	40	55	70	54	61	48	50	50	51	54	782	
Metro Region IAIU	CPS	63	57	69	43	25	47	70	45	49	53	59	67	54	70	771	
	CWS	0	0	0	0	1	0	1	0	0	0	0	0	0	0	2	
	Total	63	57	69	43	26	47	71	45	49	53	59	67	54	70	773	
Northern Region IAIU	CPS	60	85	59	50	41	58	80	47	67	62	61	73	70	80	893	
	CWS	0	0	0	0	0	0	0	0	0	0	0	0	0	0	0	
	Total	60	85	59	50	41	58	80	47	67	62	61	73	70	80	893	
Southern Region IAIU	CPS	79	106	74	61	52	64	85	59	89	60	68	68	78	97	1,040	
	CWS	0	0	0	0	0	0	0	0	0	0	0	0	0	0	0	
	Total	79	106	74	61	52	64	85	59	89	60	68	68	78	97	1,040	
IAIU CPS Subtotal		CPS	262	323	262	208	158	224	305	205	266	223	238	258	253	301	3,486
IAIU CWS Subtotal		CWS	0	0	0	0	1	1	0	0	0	0	0	0	0	2	
IAIU Subtotal		Total	262	323	262	208	159	225	305	205	266	223	238	258	253	301	3,488
County and IAIU CPS Subtotal		CPS	5,012	5,420	4,734	4,130	3,564	4,611	5,427	4,178	4,430	4,475	4,488	5,107	4,867	5,361	65,804
County and IAIU CWS Subtotal		CWS	1,358	1,542	1,420	1,170	1,158	1,414	1,490	1,373	1,402	1,337	1,290	1,536	1,341	1,511	19,342
Unable to Determine⁽¹⁾		Total	143	171	156	149	129	141	174	117	123	127	138	118	141	144	1,971
Other Offices		Total	2	3	3	0	0	0	4	2	1	1	3	6	2	2	29
Grand Total		Total	6,515	7,136	6,313	5,449	4,851	6,166	7,095	5,670	5,956	5,940	5,919	6,767	6,351	7,018	87,146

⁽¹⁾CPS Reports or CWS Referrals not assigned to an office through the Assignment Designee, but were assigned to an office for an assessment or investigation.