



Monthly Screening and Investigation Report June 2014

Allison Blake, Ph.D., L.S.W.
Commissioner

July 16, 2014



NEW JERSEY DEPARTMENT OF
CHILDREN AND FAMILIES

Table of Contents

Table 1: NJ State Central Registry Activity: Monthly Child Abuse and Neglect Hotline Calls, Intakes and Assignments to CP&P Offices

Chart 1: CP&P Annual Trends in CPS Reports and CWS Referrals

Table 2: Assignments to CP&P Offices: CPS Reports and CWS Referrals

Table 3: Source of CPS Reports and CWS Referrals

Table 4: Monthly Count of CPS Reports and CWS Referrals Assigned to Counties

Table 5: Monthly Count of CPS Reports and CWS Referrals Assigned to CP&P Local Offices

Table 1: NJ State Central Registry Activity: Monthly Child Abuse and Neglect Hotline Calls, Intakes and Assignments to CP&P Offices^{1,2,6}

2013 - 2014	Hotline Call Activity		Intakes Recorded in NJ SPIRIT ^{5,7}												Assignments to CP&P Offices				
	Total Calls ³	Resulting Intakes ⁴	CPS Reports		CWS Referrals		No Action Required (NAR)		Related Information (RI)		Information & Referral (I&R)		Information Only (IO)		CPS Reports		CWS Referrals		Total Assignments
			n	%	n	%	n	%	n	%	n	%	n	%	n	%	n	%	
June 2013	14,230	15,609	4,915	31.5%	1,263	8.1%	348	2.2%	4,133	26.5%	1,681	10.8%	3,269	20.9%	4,914	79.6%	1,263	20.4%	6,177
July 2013	12,870	14,377	4,302	29.9%	1,255	8.7%	375	2.6%	3,703	25.8%	1,591	11.1%	3,151	21.9%	4,301	77.4%	1,257	22.6%	5,558
August 2013	12,375	14,994	4,288	28.6%	1,198	8.0%	377	2.5%	3,934	26.2%	2,133	14.2%	3,064	20.4%	4,287	78.2%	1,198	21.8%	5,485
September 2013	14,201	15,762	4,814	30.5%	1,291	8.2%	395	2.5%	4,059	25.8%	1,957	12.4%	3,246	20.6%	4,813	78.9%	1,289	21.1%	6,102
October 2013	15,671	17,315	5,563	32.1%	1,530	8.8%	483	2.8%	4,308	24.9%	1,999	11.5%	3,432	19.8%	5,563	78.4%	1,532	21.6%	7,095
November 2013	13,950	15,260	4,687	30.7%	1,343	8.8%	261	1.7%	4,277	28.0%	1,586	10.4%	3,106	20.4%	4,686	77.7%	1,342	22.3%	6,028
December 2013	12,568	13,962	4,365	31.3%	1,260	9.0%	391	2.8%	3,445	24.7%	1,554	11.1%	2,947	21.1%	4,365	77.6%	1,261	22.4%	5,626
January 2014	15,091	16,412	5,097	31.1%	1,416	8.6%	346	2.1%	4,233	25.8%	1,728	10.5%	3,592	21.9%	5,097	78.3%	1,416	21.7%	6,513
February 2014	13,092	14,377	4,458	31.0%	1,293	9.0%	306	2.1%	3,838	26.7%	1,395	9.7%	3,087	21.5%	4,457	77.5%	1,295	22.5%	5,752
March 2014	15,236	16,707	5,408	32.4%	1,585	9.5%	363	2.2%	4,257	25.5%	1,774	10.6%	3,320	19.9%	5,408	77.3%	1,586	22.7%	6,994
April 2014	14,056	15,642	5,052	32.3%	1,467	9.4%	400	2.6%	3,846	24.6%	1,676	10.7%	3,201	20.5%	5,049	77.5%	1,467	22.5%	6,516
May 2014	15,690	17,101	5,501	32.2%	1,635	9.6%	396	2.3%	4,444	26.0%	1,816	10.6%	3,309	19.3%	5,501	77.1%	1,635	22.9%	7,136
June 2014	13,809	15,171	4,796	31.6%	1,516	10.0%	402	2.6%	4,028	26.6%	1,625	10.7%	2,804	18.5%	4,796	76.0%	1,517	24.0%	6,313
<i>Monthly Average</i>	<i>14,065</i>	<i>15,591</i>	<i>4,865</i>	<i>31.2%</i>	<i>1,389</i>	<i>8.9%</i>	<i>373</i>	<i>2.4%</i>	<i>4,039</i>	<i>25.9%</i>	<i>1,732</i>	<i>11.1%</i>	<i>3,194</i>	<i>20.5%</i>	<i>4,864</i>	<i>77.8%</i>	<i>1,389</i>	<i>22.2%</i>	<i>6,253</i>
Overall Total	182,839		63,246		18,052		4,843		52,505		22,515		41,528		63,237	77.8%	18,058	22.2%	81,295

¹The data in this table comes from three distinct sources: (1) the ACD phone system which keeps a count of the number of calls and call routing; (2) Monthly NJSpirit Intakes which record decision making on calls received by hotline screeners, and (3) NJSpirit extracts of assigned CWS Referrals and CPS Reports.

²The number of Intakes, CPS Reports, and CWS Referrals are based on an extract from NJSpirit. The data extracted by the Office of Research, Evaluation, and Reporting on **July 9, 2014** includes all Intakes, CPS Reports, and CWS Referrals received from June 1, 2014 through June 30, 2014.

³The number calls received through the Automatic Call Distribution (ACD) System that were directed to a screener from any call-in phone number.

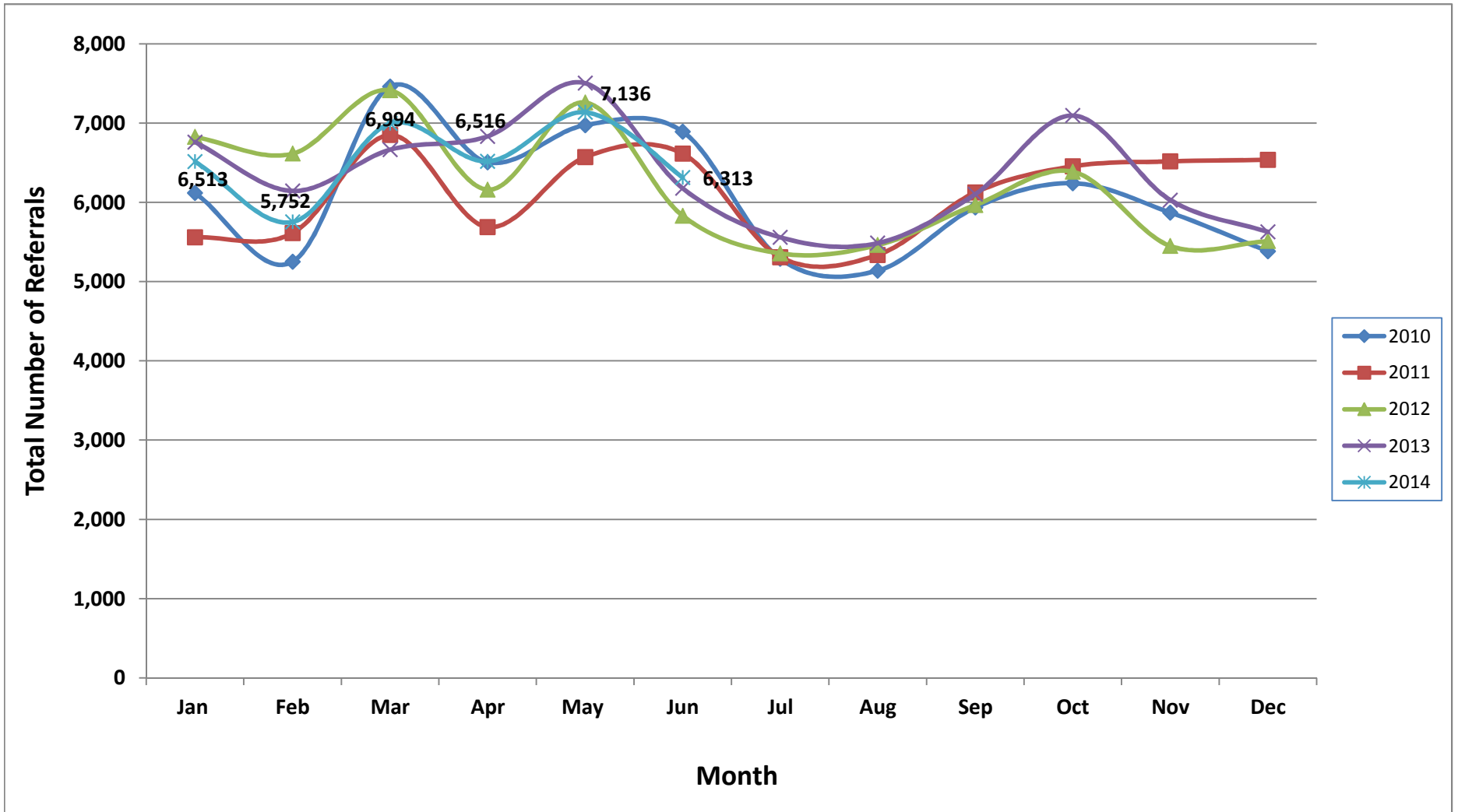
⁴The number of Intakes entered in NJSpirit from the number of calls received.

⁵The number of Intakes recorded in NJSpirit, by type of Intake. There is not a one-to-one relationship between an ACD call and an Intake; multiple calls to SCR may result in a single Intake, or one call may result in multiple Intakes.

⁶Intake: The process of documenting: a report of alleged abuse or neglect of a child (CPS); a request for services on behalf of a child, or a referral of a child for services (CWS); a call in which the caller provides additional or clarifying information about a current service case or active investigation (RI); informing a caller of, or referring a caller to, services available from other private or public sources (I&R); a call that requires no action by CP&P (NAR); or a response to a simple inquiry (IO).

⁷NJ SPIRIT: NJ Statewide Protection Investigation and Reporting Information Tool case management system

CP&P Annual Trends in CPS Reports and CWS Referrals



The data contained in this report is considered preliminary and as a result, these figures might be different than the final reported figures. The data is produced for continuous quality improvement.

Table 2: Assignments to CP&P Offices: CPS Reports and CWS Referrals¹

Intake Date		CPS Reports ^{2,3}	CWS Referrals ^{2,3}	Total Assignments ^{2,3}
2010	Jan 2010	5,154	963	6,117
	Feb 2010	4,446	804	5,250
	Mar 2010	6,314	1,147	7,461
	Apr 2010	5,465	1,040	6,505
	May 2010	5,797	1,177	6,974
	Jun 2010	5,734	1,157	6,891
	Jul 2010	4,270	1,017	5,287
	Aug 2010	4,110	1,028	5,138
	Sep 2010	4,922	1,012	5,934
	Oct 2010	5,105	1,136	6,241
	Nov 2010	4,842	1,028	5,870
	Dec 2010	4,472	909	5,381
	Total	60,631	12,418	73,049
2011	Jan 2011	4,616	942	5,558
	Feb 2011	4,672	939	5,611
	Mar 2011	5,701	1,148	6,849
	Apr 2011	4,682	1,005	5,687
	May 2011	5,362	1,207	6,569
	Jun 2011	5,299	1,315	6,614
	Jul 2011	4,200	1,108	5,308
	Aug 2011	4,170	1,166	5,336
	Sep 2011	4,872	1,253	6,125
	Oct 2011	5,322	1,132	6,454
	Nov 2011	5,220	1,296	6,516
	Dec 2011	5,363	1,173	6,536
	Total	59,479	13,684	73,163
2012	Jan 2012	5,530	1,294	6,824
	Feb 2012	5,358	1,255	6,613
	Mar 2012	5,985	1,428	7,413
	Apr 2012	4,899	1,259	6,158
	May 2012	5,874	1,385	7,259
	June 2012	4,640	1,190	5,830
	July 2012	4,254	1,101	5,355
	Aug 2012	4,325	1,135	5,460
	Sep 2012	4,769	1,196	5,965
	Oct 2012	5,178	1,207	6,385
	Nov 2012	4,310	1,138	5,448
	Dec 2012	4,394	1,116	5,510
	Total	59,516	14,704	74,220

Table 2: Assignments to CP&P Offices: CPS Reports and CWS Referrals¹

Intake Date		CPS Reports ^{2,3}	CWS Referrals ^{2,3}	Total Assignments ^{2,3}
2013	Jan 2013	5,464	1,296	6,760
	Feb 2013	4,966	1,177	6,143
	Mar 2013	5,355	1,309	6,664
	Apr 2013	5,430	1,402	6,832
	May 2013	5,993	1,510	7,503
	June 2013	4,947	1,230	6,177
	July 2013	4,330	1,228	5,558
	Aug 2013	4,330	1,155	5,485
	Sep 2013	4,851	1,251	6,102
	Oct 2013	5,614	1,481	7,095
	Nov 2013	4,694	1,334	6,028
	Dec 2013	4,397	1,229	5,626
	Total	60,371	15,602	75,973
2014	Jan 2014	5,138	1,375	6,513
	Feb 2014	4,499	1,253	5,752
	Mar 2014	5,438	1,556	6,994
	Apr 2014	5,105	1,411	6,516
	May 2014	5,541	1,595	7,136
	June 2014	4,842	1,471	6,313
	Total	30,563	8,661	39,224
Grand Total		270,560	65,069	335,629

¹Source of Data: NJ SPIRIT

²A CPS Report or a CWS Referral may include multiple children in a family, with one or more allegation or request for services. In these cases, each CPS Report or CWS Referral is counted once - the CPS Report or the CWS Referral is the unit of analysis rather than the child.

³Includes CPS Reports and CWS Referrals with an assignment to an office via the Assignment Designee process.

Table 3: Source of CPS Reports and CWS Referrals

	Source	June 2013	July 2013	Aug 2013	Sep 2013	Oct 2013	Nov 2013	Dec 2013	Jan 2014	Feb 2014	Mar 2014	Apr 2014	May 2014	June 2014		13 Month Total	
CPS Reports and CWS Referrals	School Staff	1,063	151	68	1,071	1,854	1,455	1,222	1,672	1,488	2,000	1,523	1,861	1,216	19%	16,644	20%
	Healthcare Provider	767	827	818	777	863	751	696	850	699	855	878	818	806	13%	10,405	13%
	Law Enforcement	940	947	978	913	840	855	756	845	760	900	853	994	955	15%	11,536	14%
	Government Agency	437	511	503	399	520	445	417	437	402	451	475	504	472	7%	5,973	7%
	Parent	602	624	666	591	561	523	561	561	477	526	525	666	554	9%	7,437	9%
	Relative/Friend/Neighbor	560	607	629	581	548	424	446	494	415	460	533	577	596	9%	6,870	8%
	Anonymous	831	795	786	879	903	742	683	776	661	803	740	741	723	11%	10,063	12%
	CP&P	117	136	119	106	116	91	93	109	100	126	111	128	148	2%	1,500	2%
	Court/Legal	119	128	135	118	148	84	108	102	110	145	142	116	120	2%	1,575	2%
	Community Group/Individual	237	273	247	208	238	218	188	249	224	248	275	269	241	4%	3,115	4%
	Facility Staff (incl Correctional Facility)	111	106	94	66	95	81	72	79	91	96	74	69	96	2%	1,130	1%
	Child (Self)	55	49	51	51	52	49	45	46	38	41	55	44	56	1%	632	1%
	Other	316	384	371	332	336	294	321	283	279	327	317	334	318	5%	4,212	5%
	Daycare/Babysitter	22	20	20	10	21	16	18	10	8	16	15	15	12	0%	203	0%
	Total	6,177	5,558	5,485	6,102	7,095	6,028	5,626	6,513	5,752	6,994	6,516	7,136	6,313		81,295	

Table 4: Monthly Count of CPS Reports and CWS Referrals Assigned to Counties

County														Average # of Assignments the Last 12 Months	May 14 to Jun 14 Numerical Difference	Jun 13 to Jun 14 Numerical Difference
	Jun 2013	Jul 2013	Aug 2013	Sep 2013	Oct 2013	Nov 2013	Dec 2013	Jan 2014	Feb 2014	Mar 2014	Apr 2014	May 2014	Jun 2014			
Atlantic	235	231	199	264	280	223	218	256	233	267	242	288	234	245	-54	-1
Bergen	384	240	275	296	385	344	314	359	307	342	334	378	295	322	-83	-89
Burlington	277	291	269	281	362	256	233	318	278	342	312	351	279	298	-72	2
Camden	477	456	542	522	553	485	494	483	464	495	547	567	528	511	-39	51
Cape May	85	109	99	93	94	61	82	89	84	74	87	112	64	87	-48	-21
Cumberland	201	198	198	205	262	210	183	197	214	208	222	247	210	213	-37	9
Essex	651	596	607	657	712	653	574	651	563	762	664	753	632	652	-121	-19
Gloucester	241	231	266	296	261	248	213	259	258	266	234	297	295	260	-2	54
Hudson	440	386	384	407	506	441	429	493	399	537	437	509	466	450	-43	26
Hunterdon	53	50	32	36	64	44	43	65	51	68	50	59	41	50	-18	-12
Mercer	232	207	225	235	253	237	215	251	228	296	279	299	279	250	-20	47
Middlesex	416	302	319	420	503	395	366	454	366	499	438	475	400	411	-75	-16
Monmouth	363	321	297	329	386	354	337	373	357	429	379	400	388	363	-12	25
Morris	215	188	169	207	231	206	206	242	209	224	237	250	214	215	-36	-1
Ocean	426	385	339	380	448	385	340	432	350	429	369	411	416	390	5	-10
Passaic	390	354	320	363	467	381	388	394	328	471	472	478	402	402	-76	12
Salem	83	82	84	84	97	74	72	85	76	77	79	85	75	81	-10	-8
Somerset	140	137	106	160	190	148	132	174	159	196	171	159	180	159	21	40
Sussex	102	120	78	88	102	110	73	115	86	88	106	116	92	98	-24	-10
Union	267	202	206	258	360	295	302	329	303	337	347	306	303	296	-3	36
Warren	93	89	96	94	105	85	96	95	106	111	103	99	99	98	0	6
County Subtotals	5,771	5,175	5,110	5,675	6,621	5,635	5,310	6,114	5,419	6,518	6,109	6,639	5,892	5,851	-747	121
Central Region IAIU	55	66	61	57	80	61	35	63	54	60	60	75	60	61	-15	5
Metro Region IAIU	59	37	38	50	59	49	47	42	44	91	63	57	69	54	12	10
Northern Region IAIU	61	61	46	68	83	67	63	77	66	88	60	85	59	69	-26	-2
Southern Region IAIU	75	74	69	65	108	70	54	69	50	78	79	106	74	75	-32	-1
IAIU Subtotals	250	238	214	240	330	247	199	251	214	317	262	323	262	258	-61	12
Unable to Determine¹	156	143	161	183	142	144	115	146	119	155	143	171	156	148	-15	0
Other Offices	0	2	0	4	2	2	2	2	0	4	2	3	3	2		3
Grand Total	6,177	5,558	5,485	6,102	7,095	6,028	5,626	6,513	5,752	6,994	6,516	7,136	6,313	6,260	-823	136

¹CPS Reports or CWS Referrals not assigned to an office through the Assignment Designee, but were assigned to an office for an assessment or investigation.

Greatest One Month County Decrease (Numeric)

Greatest One Month County Increase (Numeric)


The data contained in this report is considered preliminary and as a result, these figures might be different than the final reported figures. The data is produced for continuous quality improvement across DCF.

Table 5: Monthly Count of CPS Reports and CWS Referrals Assigned to CP&P Local Offices

County	Local Office	Type of Referral	Referral Month												Total	
			Jun 2013	Jul 2013	Aug 2013	Sep 2013	Oct 2013	Nov 2013	Dec 2013	Jan 2014	Feb 2014	Mar 2014	Apr 2014	May 2014		Jun 2014
ATLANTIC	Atlantic East	CPS	113	91	106	112	142	107	94	118	93	116	117	124	94	1,427
		CWS	23	38	13	25	32	30	25	31	36	36	28	32	27	376
		Total	136	129	119	137	174	137	119	149	129	152	145	156	121	1,803
	Atlantic West	CPS	73	81	65	112	82	75	76	80	84	94	75	107	89	1,093
		CWS	26	21	15	15	24	11	23	27	20	21	22	25	24	274
		Total	99	102	80	127	106	86	99	107	104	115	97	132	113	1,367
	County Total	CPS	186	172	171	224	224	182	170	198	177	210	192	231	183	2,520
CWS		49	59	28	40	56	41	48	58	56	57	50	57	51	650	
Total		235	231	199	264	280	223	218	256	233	267	242	288	234	3,170	
BERGEN	Bergen Central	CPS	112	72	79	104	127	115	90	114	97	127	115	121	97	1,370
		CWS	47	17	32	22	55	33	29	39	25	35	39	45	31	449
		Total	159	89	111	126	182	148	119	153	122	162	154	166	128	1,819
	Bergen South	CPS	183	117	126	125	158	149	149	162	137	145	136	163	129	1,879
		CWS	42	34	38	45	45	47	46	44	48	35	44	49	38	555
		Total	225	151	164	170	203	196	195	206	185	180	180	212	167	2,434
	County Total	CPS	295	189	205	229	285	264	239	276	234	272	251	284	226	3,249
CWS		89	51	70	67	100	80	75	83	73	70	83	94	69	1,004	
Total		384	240	275	296	385	344	314	359	307	342	334	378	295	4,253	
BURLINGTON	Burlington East	CPS	120	105	93	115	150	99	89	120	104	128	119	132	103	1,477
		CWS	27	30	28	30	38	21	31	29	27	40	23	37	32	393
		Total	147	135	121	145	188	120	120	149	131	168	142	169	135	1,870
	Burlington West	CPS	116	124	113	98	142	113	83	139	108	139	133	141	111	1,560
		CWS	14	32	35	38	32	23	30	30	39	35	37	41	33	419
		Total	130	156	148	136	174	136	113	169	147	174	170	182	144	1,979
	County Total	CPS	236	229	206	213	292	212	172	259	212	267	252	273	214	3,037
CWS		41	62	63	68	70	44	61	59	66	75	60	78	65	812	
Total		277	291	269	281	362	256	233	318	278	342	312	351	279	3,849	
CAMDEN	Camden Central	CPS	101	99	108	128	112	99	107	119	115	100	127	110	127	1,452
		CWS	30	22	39	29	29	38	31	28	23	23	37	48	39	416
		Total	131	121	147	157	141	137	138	147	138	123	164	158	166	1,868
	Camden East	CPS	110	89	133	96	109	101	100	96	85	97	112	118	101	1,347
		CWS	29	26	30	34	28	29	36	25	29	45	34	21	38	404
		Total	139	115	163	130	137	130	136	121	114	142	146	139	139	1,751
	Camden North	CPS	82	104	91	91	107	86	93	94	95	94	107	96	104	1,244
		CWS	26	25	32	26	35	26	28	22	30	27	39	41	31	388
		Total	108	129	123	117	142	112	121	116	125	121	146	137	135	1,632
	Camden South	CPS	86	73	93	101	100	84	80	82	63	77	75	101	62	1,077
		CWS	13	18	16	17	33	22	19	17	24	32	16	32	26	285
		Total	99	91	109	118	133	106	99	99	87	109	91	133	88	1,362
	County Total	CPS	379	365	425	416	428	370	380	391	358	368	421	425	394	5,120
CWS		98	91	117	106	125	115	114	92	106	127	126	142	134	1,493	
Total		477	456	542	522	553	485	494	483	464	495	547	567	528	6,613	
CAPE MAY	Cape May	CPS	60	82	79	77	73	46	61	67	61	57	69	92	45	869
		CWS	25	27	20	16	21	15	21	22	23	17	18	20	19	264
		Total	85	109	99	93	94	61	82	89	84	74	87	112	64	1,133
	County Total	CPS	60	82	79	77	73	46	61	67	61	57	69	92	45	869
		CWS	25	27	20	16	21	15	21	22	23	17	18	20	19	264
Total	85	109	99	93	94	61	82	89	84	74	87	112	64	1,133		
CUMBERLAND	Cumberland East	CPS	54	57	63	55	61	49	59	45	60	48	51	64	57	723
		CWS	12	11	15	23	22	16	9	16	12	13	21	18	22	210
		Total	66	68	78	78	83	65	68	61	72	61	72	82	79	933
	Cumberland West	CPS	109	107	98	96	146	107	93	107	109	112	120	132	109	1,445
		CWS	26	23	22	31	33	38	22	29	33	35	30	33	22	377
		Total	135	130	120	127	179	145	115	136	142	147	150	165	131	1,822
	County Total	CPS	163	164	161	151	207	156	152	152	169	160	171	196	166	2,168
CWS		38	34	37	54	55	54	31	45	45	48	51	51	44	587	
Total	201	198	198	205	262	210	183	197	214	208	222	247	210	2,755		

The data contained in this report is considered preliminary and as a result, these figures might be different than the final reported figures. The data is produced for continuous quality improvement across DCF.

Table 5: Monthly Count of CPS Reports and CWS Referrals Assigned to CP&P Local Offices

County	Local Office	Type of Referral	Referral Month												Total	
			Jun 2013	Jul 2013	Aug 2013	Sep 2013	Oct 2013	Nov 2013	Dec 2013	Jan 2014	Feb 2014	Mar 2014	Apr 2014	May 2014		Jun 2014
MIDDLESEX	Middlesex Central	CPS	86	38	64	80	100	74	73	82	71	87	78	87	79	999
		CWS	18	25	15	17	28	22	13	22	19	21	22	20	19	261
		Total	104	63	79	97	128	96	86	104	90	108	100	107	98	1,260
	Middlesex Coastal	CPS	126	103	107	149	145	112	96	131	97	171	135	149	122	1,643
		CWS	25	33	29	26	42	22	35	32	21	37	34	28	34	398
		Total	151	136	136	175	187	134	131	163	118	208	169	177	156	2,041
	Middlesex West	CPS	131	86	82	120	150	127	107	153	124	143	136	162	109	1,630
		CWS	30	17	22	28	38	38	42	34	34	40	33	29	37	422
		Total	161	103	104	148	188	165	149	187	158	183	169	191	146	2,052
	County Total	CPS	343	227	253	349	395	313	276	366	292	401	349	398	310	4,272
		Total	416	302	319	420	503	395	366	454	366	499	438	475	400	5,353
	MONMOUTH	Monmouth North	CPS	157	128	132	141	179	167	151	147	147	183	166	183	139
CWS			40	33	29	33	32	41	50	36	40	51	57	35	52	529
Total			197	161	161	174	211	208	201	183	187	234	223	218	191	2,549
Monmouth South		CPS	131	128	103	129	138	112	104	144	136	150	117	131	153	1,676
		CWS	35	32	33	26	37	34	32	46	34	45	39	51	44	488
		Total	166	160	136	155	175	146	136	190	170	195	156	182	197	2,164
County Total		CPS	288	256	235	270	317	279	255	291	283	333	283	314	292	3,696
		Total	363	321	297	329	386	354	337	373	357	429	379	400	388	4,713
MORRIS	Morris West	CPS	97	76	73	88	103	101	94	110	108	97	102	97	87	1,233
		CWS	33	28	33	35	31	23	29	26	26	26	33	32	32	387
		Total	130	104	106	123	134	124	123	136	134	123	135	129	119	1,620
	Morris East	CPS	60	63	52	65	81	62	64	76	49	77	85	82	66	882
		CWS	25	21	11	19	16	20	19	30	26	24	17	39	29	296
		Total	85	84	63	84	97	82	83	106	75	101	102	121	95	1,178
	County Total	CPS	157	139	125	153	184	163	158	186	157	174	187	179	153	2,115
		Total	215	188	169	207	231	206	206	242	209	224	237	250	214	2,798
OCEAN	Ocean North	CPS	151	131	123	147	179	149	127	146	134	128	149	161	148	1,873
		CWS	39	31	22	30	56	34	29	45	31	44	30	38	36	465
		Total	190	162	145	177	235	183	156	191	165	172	179	199	184	2,338
	Ocean South	CPS	203	160	154	173	176	159	150	198	145	207	155	156	188	2,224
		CWS	33	63	40	30	37	43	34	43	40	50	35	56	44	548
		Total	236	223	194	203	213	202	184	241	185	257	190	212	232	2,772
	County Total	CPS	354	291	277	320	355	308	277	344	279	335	304	317	336	4,097
		Total	426	385	339	380	448	385	340	432	350	429	369	411	416	5,110
PASSAIC	Passaic Central	CPS	158	144	128	131	194	161	139	165	152	200	184	203	159	2,118
		CWS	34	29	27	39	57	37	47	41	44	71	50	55	60	591
		Total	192	173	155	170	251	198	186	206	196	271	234	258	219	2,709
	Passaic North	CPS	160	136	130	151	160	137	162	136	104	159	176	176	131	1,918
		CWS	38	45	35	42	56	46	40	52	28	41	62	44	52	581
		Total	198	181	165	193	216	183	202	188	132	200	238	220	183	2,499
	County Total	CPS	318	280	258	282	354	298	301	301	256	359	360	379	290	4,036
		Total	390	354	320	363	467	381	388	394	328	471	472	478	402	5,208
SALEM	Salem	CPS	67	63	65	67	80	52	58	66	59	56	67	66	54	820
		CWS	16	19	19	17	17	22	14	19	17	21	12	19	21	233
		Total	83	82	84	84	97	74	72	85	76	77	79	85	75	1,053
	County Total	CPS	67	63	65	67	80	52	58	66	59	56	67	66	54	820
		Total	83	82	84	84	97	74	72	85	76	77	79	85	75	1,053
	SOMERSET	Somerset	CPS	113	114	86	133	140	122	103	142	125	161	133	120	137
CWS			27	23	20	27	50	26	29	32	34	35	38	39	43	423
Total			140	137	106	160	190	148	132	174	159	196	171	159	180	2,052
County Total		CPS	113	114	86	133	140	122	103	142	125	161	133	120	137	1,629
		Total	140	137	106	160	190	148	132	174	159	196	171	159	180	2,052

The data contained in this report is considered preliminary and as a result, these figures might be different than the final reported figures. The data is produced for continuous quality improvement across DCF.

Table 5: Monthly Count of CPS Reports and CWS Referrals Assigned to CP&P Local Offices

County	Local Office	Type of Referral	Referral Month												Total	
			Jun 2013	Jul 2013	Aug 2013	Sep 2013	Oct 2013	Nov 2013	Dec 2013	Jan 2014	Feb 2014	Mar 2014	Apr 2014	May 2014		Jun 2014
SUSSEX	Sussex	CPS	79	89	62	73	80	82	58	86	71	69	87	88	71	995
		CWS	23	31	16	15	22	28	15	29	15	19	19	28	21	281
		Total	102	120	78	88	102	110	73	115	86	88	106	116	92	1,276
	County Total	CPS	79	89	62	73	80	82	58	86	71	69	87	88	71	995
		CWS	23	31	16	15	22	28	15	29	15	19	19	28	21	281
UNION	Union Central	CPS	59	53	46	56	91	76	75	69	73	79	93	69	73	912
		CWS	17	17	17	18	27	20	20	18	27	34	19	20	21	275
		Total	76	70	63	74	118	96	95	87	100	113	112	89	94	1,187
	Union East	CPS	87	69	64	82	100	87	96	109	77	103	110	79	92	1,155
		CWS	15	13	15	21	28	29	24	30	20	29	34	25	38	321
		Total	102	82	79	103	128	116	120	139	97	132	144	104	130	1,476
	Union West	CPS	73	32	54	65	88	67	70	80	77	59	67	88	59	879
		CWS	16	18	10	16	26	16	17	23	29	33	24	25	20	273
		Total	89	50	64	81	114	83	87	103	106	92	91	113	79	1,152
	County Total	CPS	219	154	164	203	279	230	241	258	227	241	270	236	224	2,946
		CWS	48	48	42	55	81	65	61	71	76	96	77	70	79	869
		Total	267	202	206	258	360	295	302	329	303	337	347	306	303	3,815
WARREN	Warren	CPS	80	69	77	71	78	70	77	70	82	81	76	76	72	979
		CWS	13	20	19	23	27	15	19	25	24	30	27	23	27	292
		Total	93	89	96	94	105	85	96	95	106	111	103	99	99	1,271
	County Total	CPS	80	69	77	71	78	70	77	70	82	81	76	76	72	979
		CWS	13	20	19	23	27	15	19	25	24	30	27	23	27	292
Total	93	89	96	94	105	85	96	95	106	111	103	99	99	1,271		
County CPS Referral Total	CPS	4,592	4,006	4,009	4,480	5,196	4,347	4,120	4,787	4,208	5,015	4,751	5,097	4,472	59,080	
County CWS Referral Total	CWS	1,179	1,169	1,101	1,195	1,425	1,288	1,190	1,327	1,211	1,503	1,358	1,542	1,420	16,908	
County Referral Total	Total	5,771	5,175	5,110	5,675	6,621	5,635	5,310	6,114	5,419	6,518	6,109	6,639	5,892	75,988	
Central Region IAIU	CPS	55	66	61	57	80	61	35	63	54	60	60	75	60	787	
	CWS	0	0	0	0	0	0	0	0	0	0	0	0	0	0	
	Total	55	66	61	57	80	61	35	63	54	60	60	75	60	787	
Metro Region IAIU	CPS	59	37	38	50	59	49	47	42	44	91	63	57	69	705	
	CWS	0	0	0	0	0	0	0	0	0	0	0	0	0	0	
	Total	59	37	38	50	59	49	47	42	44	91	63	57	69	705	
Northern Region IAIU	CPS	61	61	46	68	83	65	63	77	66	88	60	85	59	882	
	CWS	0	0	0	0	0	2	0	0	0	0	0	0	0	2	
	Total	61	61	46	68	83	67	63	77	66	88	60	85	59	884	
Southern Region IAIU	CPS	75	74	69	65	108	70	54	69	50	78	79	106	74	971	
	CWS	0	0	0	0	0	0	0	0	0	0	0	0	0	0	
	Total	75	74	69	65	108	70	54	69	50	78	79	106	74	971	
IAIU CPS Subtotal	CPS	250	238	214	240	330	245	199	251	214	317	262	323	262	3,345	
IAIU CWS Subtotal	CWS	0	0	0	0	0	2	0	0	0	0	0	0	0	2	
IAIU Subtotal	Total	250	238	214	240	330	247	199	251	214	317	262	323	262	3,347	
County and IAIU CPS Subtotal	CPS	4,842	4,244	4,223	4,720	5,526	4,592	4,319	5,038	4,422	5,332	5,013	5,420	4,734	62,425	
County and IAIU CWS Subtotal	CWS	1,179	1,169	1,101	1,195	1,425	1,290	1,190	1,327	1,211	1,503	1,358	1,542	1,420	16,910	
Unable to Determine⁽¹⁾	Total	156	143	161	183	142	144	115	146	119	155	143	171	156	1,934	
Other Offices	Total	0	2	0	4	2	2	2	2	0	4	2	3	3	26	
Grand Total	Total	6,177	5,558	5,485	6,102	7,095	6,028	5,626	6,513	5,752	6,994	6,516	7,136	6,313	81,295	

⁽¹⁾CPS Reports or CWS Referrals not assigned to an office through the Assignment Designee, but were assigned to an office for an assessment or investigation.