



Child Protection and Permanency

Monthly Screening and Investigation Report September 2014

Allison Blake, Ph.D., L.S.W.
Commissioner

October 17, 2014



NEW JERSEY DEPARTMENT OF
CHILDREN AND FAMILIES

Table of Contents

Table 1: NJ State Central Registry Activity: Monthly Child Abuse and Neglect Hotline Calls, Intakes and Assignments to Child Protection & Permanency (CP&P) Offices

Chart 1: CP&P Annual Trends in Child Protection Services (CPS) Reports and Child Welfare Services (CWS) Referrals

Table 2: Assignments to CP&P Offices: CPS Reports and CWS Referrals

Table 3: Source of CPS Reports and CWS Referrals

Table 4: Monthly Count of CPS Reports and CWS Referrals Assigned to Counties

Table 5: Monthly Count of CPS Reports and CWS Referrals Assigned to CP&P Local Offices

Table 1: NJ State Central Registry Activity: Monthly Child Abuse and Neglect Hotline Calls, Intakes and Assignments to CP&P Offices^{1,2,6}

2013 - 2014	Hotline Call Activity		Intakes Recorded in NJ SPIRIT ^{5,7}												Assignments to CP&P Offices				
	Total Calls ³	Resulting Intakes ⁴	CPS Reports		CWS Referrals		No Action Required (NAR)		Related Information (RI)		Information & Referral (I&R)		Information Only (IO)		CPS Reports		CWS Referrals		Total Assignments
			n	%	n	%	n	%	n	%	n	%	n	%	n	%	n	%	
September 2013	14,201	15,762	4,814	30.5%	1,291	8.2%	395	2.5%	4,059	25.8%	1,957	12.4%	3,246	20.6%	4,813	78.9%	1,289	21.1%	6,102
October 2013	15,671	17,315	5,563	32.1%	1,530	8.8%	483	2.8%	4,308	24.9%	1,999	11.5%	3,432	19.8%	5,563	78.4%	1,532	21.6%	7,095
November 2013	13,950	15,260	4,687	30.7%	1,343	8.8%	261	1.7%	4,277	28.0%	1,586	10.4%	3,106	20.4%	4,686	77.7%	1,342	22.3%	6,028
December 2013	12,568	13,962	4,365	31.3%	1,260	9.0%	391	2.8%	3,445	24.7%	1,554	11.1%	2,947	21.1%	4,365	77.6%	1,261	22.4%	5,626
January 2014	15,091	16,412	5,097	31.1%	1,416	8.6%	346	2.1%	4,233	25.8%	1,728	10.5%	3,592	21.9%	5,097	78.3%	1,416	21.7%	6,513
February 2014	13,092	14,377	4,458	31.0%	1,293	9.0%	306	2.1%	3,838	26.7%	1,395	9.7%	3,087	21.5%	4,457	77.5%	1,295	22.5%	5,752
March 2014	15,236	16,707	5,408	32.4%	1,585	9.5%	363	2.2%	4,257	25.5%	1,774	10.6%	3,320	19.9%	5,408	77.3%	1,586	22.7%	6,994
April 2014	14,056	15,642	5,052	32.3%	1,467	9.4%	400	2.6%	3,846	24.6%	1,676	10.7%	3,201	20.5%	5,049	77.5%	1,467	22.5%	6,516
May 2014	15,690	17,101	5,501	32.2%	1,635	9.6%	396	2.3%	4,444	26.0%	1,816	10.6%	3,309	19.3%	5,501	77.1%	1,635	22.9%	7,136
June 2014	13,809	15,171	4,796	31.6%	1,516	10.0%	402	2.6%	4,028	26.6%	1,625	10.7%	2,804	18.5%	4,796	76.0%	1,517	24.0%	6,313
July 2014	12,308	13,784	4,202	30.5%	1,247	9.0%	384	2.8%	3,758	27.3%	1,487	10.8%	2,706	19.6%	4,202	77.1%	1,247	22.9%	5,449
August 2014	11,306	12,610	3,629	28.8%	1,222	9.7%	331	2.6%	3,314	26.3%	1,321	10.5%	2,793	22.1%	3,629	74.8%	1,222	25.2%	4,851
September 2014	13,664	15,190	4,668	30.7%	1,496	9.8%	393	2.6%	3,949	26.0%	1,792	11.8%	2,892	19.0%	4,668	75.7%	1,498	24.3%	6,166
Monthly Average	13,896	15,330	4,788	31.2%	1,408	9.2%	373	2.4%	3,981	26.0%	1,670	10.9%	3,110	20.3%	4,787	77.3%	1,408	22.7%	6,195
Overall Total	180,642		62,240		18,301		4,851		51,756		21,710		40,435		62,234	77.3%	18,307	22.7%	80,541

¹Comes from three distinct sources: (1) the Automatic Call Distribution (ACD) phone system; which keeps a count of the number of calls and call routing; (2) Monthly NJSpirit Intakes; which record decision making on calls received by hotline screeners, and (3) NJSpirit extracts of assigned CWS Referrals and CPS Reports.

²The number of Intakes, CPS Reports, and CWS Referrals are based on an extract from NJSpirit. Data extracted by the Office of Research, Evaluation, and Reporting on **October 9, 2014** includes all Intakes, CPS Reports, and CWS Referrals received from September 1, 2014 through September 30, 2014.

³The number calls received through the ACD System that were directed to a screener from any call-in phone number.

⁴The number of Intakes entered in NJSpirit from the number of calls received.

⁵The number of Intakes recorded in NJSpirit, by type of Intake. There is not a one-to-one relationship between an ACD call and an Intake; multiple calls to State Central Registry (SCR) may result in a single Intake, or one call may result in multiple Intakes.

⁶Intake: The process of documenting: a report of alleged abuse or neglect of a child (CPS); a request for services on behalf of a child, or a referral of a child for services (CWS); a call in which the caller provides additional or clarifying information about a current service case or active investigation (RI); informing a caller of, or referring a caller to, services available from other private or public sources (I&R); a call that requires no action by CP&P (NAR); or a response to a simple inquiry (IO).

⁷NJ SPIRIT: NJ Statewide Protection Investigation and Reporting Information Tool case management system

CP&P Annual Trends in CPS Reports and CWS Referrals

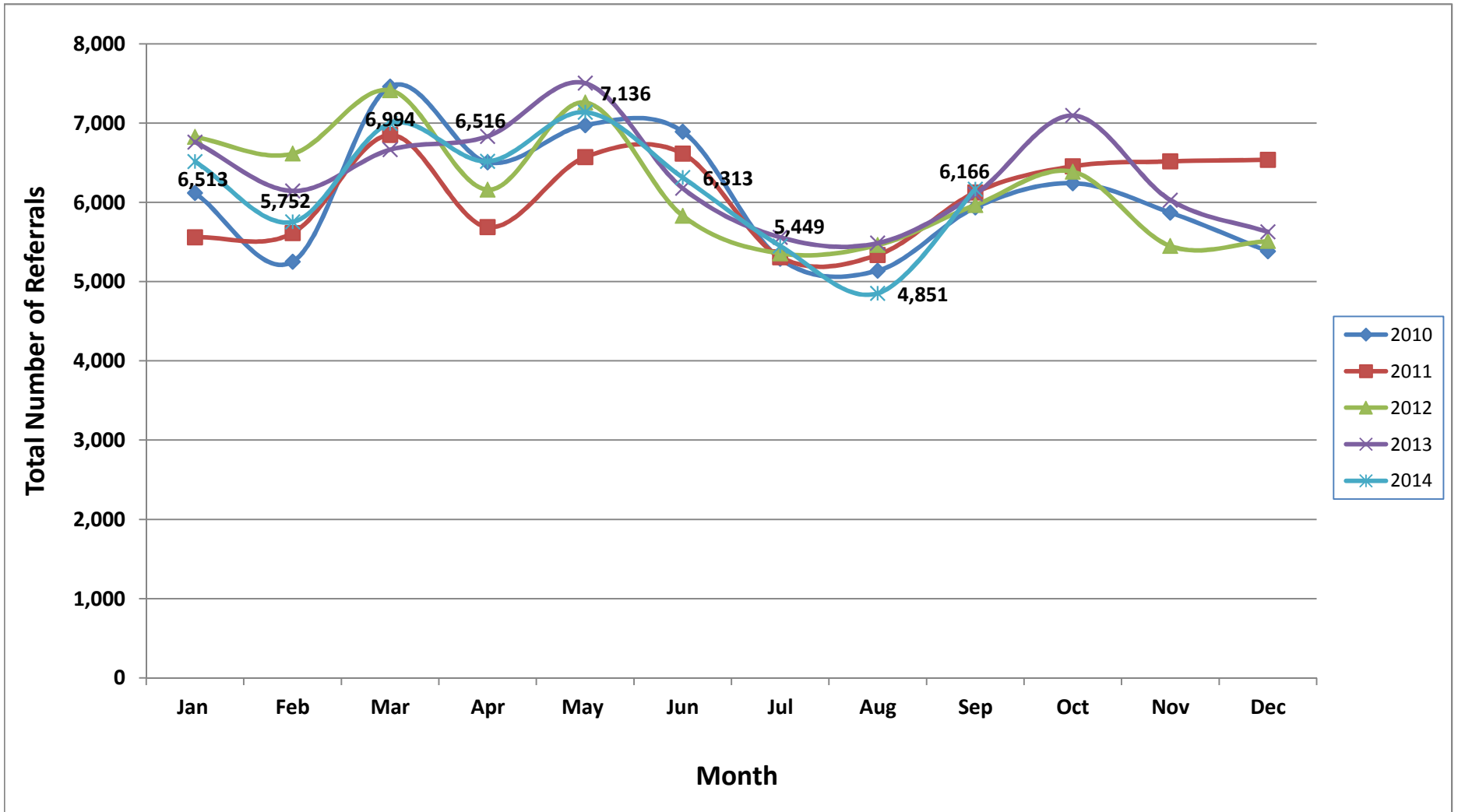


Table 2: Assignments to CP&P Offices: CPS Reports and CWS Referrals¹

Intake Date		CPS Reports ^{2,3}	CWS Referrals ^{2,3}	Total Assignments ^{2,3}
2010	Jan 2010	5,154	963	6,117
	Feb 2010	4,446	804	5,250
	Mar 2010	6,314	1,147	7,461
	Apr 2010	5,465	1,040	6,505
	May 2010	5,797	1,177	6,974
	Jun 2010	5,734	1,157	6,891
	Jul 2010	4,270	1,017	5,287
	Aug 2010	4,110	1,028	5,138
	Sep 2010	4,922	1,012	5,934
	Oct 2010	5,105	1,136	6,241
	Nov 2010	4,842	1,028	5,870
	Dec 2010	4,472	909	5,381
	Total	60,631	12,418	73,049
2011	Jan 2011	4,616	942	5,558
	Feb 2011	4,672	939	5,611
	Mar 2011	5,701	1,148	6,849
	Apr 2011	4,682	1,005	5,687
	May 2011	5,362	1,207	6,569
	Jun 2011	5,299	1,315	6,614
	Jul 2011	4,200	1,108	5,308
	Aug 2011	4,170	1,166	5,336
	Sep 2011	4,872	1,253	6,125
	Oct 2011	5,322	1,132	6,454
	Nov 2011	5,220	1,296	6,516
	Dec 2011	5,363	1,173	6,536
	Total	59,479	13,684	73,163
2012	Jan 2012	5,530	1,294	6,824
	Feb 2012	5,358	1,255	6,613
	Mar 2012	5,985	1,428	7,413
	Apr 2012	4,899	1,259	6,158
	May 2012	5,874	1,385	7,259
	June 2012	4,640	1,190	5,830
	July 2012	4,254	1,101	5,355
	Aug 2012	4,325	1,135	5,460
	Sep 2012	4,769	1,196	5,965
	Oct 2012	5,178	1,207	6,385
	Nov 2012	4,310	1,138	5,448
	Dec 2012	4,394	1,116	5,510
	Total	59,516	14,704	74,220

Table 2: Assignments to CP&P Offices: CPS Reports and CWS Referrals¹

Intake Date		CPS Reports ^{2,3}	CWS Referrals ^{2,3}	Total Assignments ^{2,3}
2013	Jan 2013	5,464	1,296	6,760
	Feb 2013	4,966	1,177	6,143
	Mar 2013	5,355	1,309	6,664
	Apr 2013	5,430	1,402	6,832
	May 2013	5,993	1,510	7,503
	June 2013	4,947	1,230	6,177
	July 2013	4,330	1,228	5,558
	Aug 2013	4,330	1,155	5,485
	Sep 2013	4,851	1,251	6,102
	Oct 2013	5,614	1,481	7,095
	Nov 2013	4,694	1,334	6,028
	Dec 2013	4,397	1,229	5,626
	Total	60,371	15,602	75,973
2014	Jan 2014	5,138	1,375	6,513
	Feb 2014	4,499	1,253	5,752
	Mar 2014	5,438	1,556	6,994
	Apr 2014	5,105	1,411	6,516
	May 2014	5,541	1,595	7,136
	June 2014	4,842	1,471	6,313
	July 2014	4,228	1,221	5,449
	Aug 2014	3,652	1,199	4,851
	Sep 2014	4,705	1,461	6,166
	Total	43,148	12,542	55,690
Grand Total		283,145	68,950	352,095

¹Source of Data: NJ SPIRIT

²A CPS Report or a CWS Referral may include multiple children in a family, with one or more allegation or request for services. In these cases, each CPS Report or CWS Referral is counted once - the CPS Report or the CWS Referral is the unit of analysis rather than the child.

³Includes CPS Reports and CWS Referrals with an assignment to an office via the Assignment Designee process.

Table 3: Source of CPS Reports and CWS Referrals

	Source	Sep 2013	Oct 2013	Nov 2013	Dec 2013	Jan 2014	Feb 2014	Mar 2014	Apr 2014	May 2014	Jun 2014	Jul 2014	Aug 2014	Sep 2014		13 Month Total	
CPS Reports and CWS Referrals	School Staff	1,071	1,854	1,455	1,222	1,672	1,488	2,000	1,523	1,861	1,216	200	90	1,200	19%	16,852	21%
	Healthcare Provider	777	863	751	696	850	699	855	878	818	806	860	704	774	13%	10,331	13%
	Law Enforcement	913	840	855	756	845	760	900	853	994	955	961	934	922	15%	11,488	14%
	Government Agency	399	520	445	417	437	402	451	475	504	472	480	429	470	8%	5,901	7%
	Parent	591	561	523	561	561	477	526	525	666	554	593	549	591	10%	7,278	9%
	Relative/Friend/Neighbor	581	548	424	446	494	415	460	533	577	596	688	586	553	9%	6,901	9%
	Anonymous	879	903	742	683	776	661	803	740	741	723	609	640	661	11%	9,561	12%
	CP&P	106	116	91	93	109	100	126	111	128	148	139	111	119	2%	1,497	2%
	Court/Legal	118	148	84	108	102	110	145	142	116	120	138	122	111	2%	1,564	2%
	Community Group/Individual	208	238	218	188	249	224	248	275	269	241	274	241	271	4%	3,144	4%
	Facility Staff (incl Correctional Facility)	66	95	81	72	79	91	96	74	69	96	94	88	72	1%	1,073	1%
	Child (Self)	51	52	49	45	46	38	41	55	44	56	52	38	63	1%	630	1%
	Other	332	336	294	321	283	279	327	317	334	318	350	312	342	6%	4,145	5%
	Daycare/Babysitter	10	21	16	18	10	8	16	15	15	12	11	7	17	0%	176	0%
	Total	6,102	7,095	6,028	5,626	6,513	5,752	6,994	6,516	7,136	6,313	5,449	4,851	6,166		80,541	

Table 4: Monthly Count of CPS Reports and CWS Referrals Assigned to Counties

County														Average # of Assignments the Last 12 Months	Aug 14 to Sep 14 Numerical Difference	Sep 13 to Sep 14 Numerical Difference
	Sep 2013	Oct 2013	Nov 2013	Dec 2013	Jan 2014	Feb 2014	Mar 2014	Apr 2014	May 2014	Jun 2014	Jul 2014	Aug 2014	Sep 2014			
Atlantic	264	280	223	218	256	233	267	242	288	234	229	221	233	244	12	-31
Bergen	296	385	344	314	359	307	342	334	378	295	228	235	337	322	102	41
Burlington	281	362	256	233	318	278	342	312	351	279	242	248	251	289	3	-30
Camden	522	553	485	494	483	464	495	547	567	528	490	400	537	504	137	15
Cape May	93	94	61	82	89	84	74	87	112	64	96	92	95	86	3	2
Cumberland	205	262	210	183	197	214	208	222	247	210	218	147	214	211	67	9
Essex	657	712	653	574	651	563	762	664	753	632	536	516	630	637	114	-27
Gloucester	296	261	248	213	259	258	266	234	297	295	254	206	261	254	55	-35
Hudson	407	506	441	429	493	399	537	437	509	466	338	275	446	440	171	39
Hunterdon	36	64	44	43	65	51	68	50	59	41	57	39	50	53	11	14
Mercer	235	253	237	215	251	228	296	279	299	279	246	203	261	254	58	26
Middlesex	420	503	395	366	454	366	499	438	475	400	336	284	413	411	129	-7
Monmouth	329	386	354	337	373	357	429	379	400	388	293	334	375	367	41	46
Morris	207	231	206	206	242	209	224	237	250	214	198	195	223	220	28	16
Ocean	380	448	385	340	432	350	429	369	411	416	372	316	384	388	68	4
Passaic	363	467	381	388	394	328	471	472	478	402	340	299	384	400	85	21
Salem	84	97	74	72	85	76	77	79	85	75	76	82	101	82	19	17
Somerset	160	190	148	132	174	159	196	171	159	180	125	119	139	158	20	-21
Sussex	88	102	110	73	115	86	88	106	116	92	96	75	87	96	12	-1
Union	258	360	295	302	329	303	337	347	306	303	245	204	286	301	82	28
Warren	94	105	85	96	95	106	111	103	99	99	77	73	93	95	20	-1
County Subtotals	5,675	6,621	5,635	5,310	6,114	5,419	6,518	6,109	6,639	5,892	5,092	4,563	5,800	5,809	1,237	125
Central Region IAIU	57	80	61	35	63	54	60	60	75	60	54	40	55	58	15	-2
Metro Region IAIU	50	59	49	47	42	44	91	63	57	69	43	26	47	53	21	-3
Northern Region IAIU	68	83	67	63	77	66	88	60	85	59	50	41	58	66	17	-10
Southern Region IAIU	65	108	70	54	69	50	78	79	106	74	61	52	64	72	12	-1
IAIU Subtotals	240	330	247	199	251	214	317	262	323	262	208	159	224	250	65	-16
Unable to Determine¹	183	142	144	115	146	119	155	143	171	156	149	129	141	143	12	-42
Other Offices	4	2	2	2	2	0	4	2	3	3	0	0	1	2		-3
Grand Total	6,102	7,095	6,028	5,626	6,513	5,752	6,994	6,516	7,136	6,313	5,449	4,851	6,166	6,203	1,315	64

¹CPS Reports or CWS Referrals not assigned to an office through the Assignment Designee, but were assigned to an office for an assessment or investigation.

Greatest One Month County Decrease (Numeric)



Greatest One Month County Increase (Numeric)



Table 5: Monthly Count of CPS Reports and CWS Referrals Assigned to CP&P Local Offices

County	Local Office	Type of Referral	Referral Month													Total
			Sep 2013	Oct 2013	Nov 2013	Dec 2013	Jan 2014	Feb 2014	Mar 2014	Apr 2014	May 2014	Jun 2014	Jul 2014	Aug 2014	Sep 2014	
ATLANTIC	Atlantic East	CPS	112	142	107	94	118	93	116	117	124	94	104	98	108	1,427
		CWS	25	32	30	25	31	36	36	28	32	27	23	32	23	380
		Total	137	174	137	119	149	129	152	145	156	121	127	130	131	1,807
	Atlantic West	CPS	112	82	75	76	80	84	94	75	107	89	75	71	82	1,102
		CWS	15	24	11	23	27	20	21	22	25	24	27	20	20	279
		Total	127	106	86	99	107	104	115	97	132	113	102	91	102	1,381
	County Totals	CPS	224	224	182	170	198	177	210	192	231	183	179	169	190	2,529
		CWS	40	56	41	48	58	56	57	50	57	51	50	52	43	659
		Total	264	280	223	218	256	233	267	242	288	234	229	221	233	3,188
BERGEN	Bergen Central	CPS	104	127	115	90	114	97	127	115	121	97	68	67	107	1,349
		CWS	22	55	33	29	39	25	35	39	45	31	23	24	38	438
		Total	126	182	148	119	153	122	162	154	166	128	91	91	145	1,787
	Bergen South	CPS	125	158	149	149	162	137	145	136	163	129	99	102	142	1,796
		CWS	45	45	47	46	44	48	35	44	49	38	38	42	50	571
		Total	170	203	196	195	206	185	180	180	212	167	137	144	192	2,367
	County Totals	CPS	229	285	264	239	276	234	272	251	284	226	167	169	249	3,145
		CWS	67	100	80	75	83	73	70	83	94	69	61	66	88	1,009
		Total	296	385	344	314	359	307	342	334	378	295	228	235	337	4,154
BURLINGTON	Burlington East	CPS	115	150	99	89	120	104	128	119	132	103	98	89	88	1,434
		CWS	30	38	21	31	29	27	40	23	37	32	27	35	32	402
		Total	145	188	120	120	149	131	168	142	169	135	125	124	120	1,836
	Burlington West	CPS	98	142	113	83	139	108	139	133	141	111	94	90	89	1,480
		CWS	38	32	23	30	30	39	35	37	41	33	23	34	42	437
		Total	136	174	136	113	169	147	174	170	182	144	117	124	131	1,917
	County Totals	CPS	213	292	212	172	259	212	267	252	273	214	192	179	177	2,914
		CWS	68	70	44	61	59	66	75	60	78	65	50	69	74	839
		Total	281	362	256	233	318	278	342	312	351	279	242	248	251	3,753
CAMDEN	Camden Central	CPS	128	112	99	107	119	115	100	127	110	127	111	97	109	1,461
		CWS	29	29	38	31	28	23	23	37	48	39	34	30	35	424
		Total	157	141	137	138	147	138	123	164	158	166	145	127	144	1,885
	Camden East	CPS	96	109	101	100	96	85	97	112	118	101	94	82	92	1,283
		CWS	34	28	29	36	25	29	45	34	21	38	27	18	46	410
		Total	130	137	130	136	121	114	142	146	139	139	121	100	138	1,693
	Camden North	CPS	91	107	86	93	94	95	94	107	96	104	91	71	95	1,224
		CWS	26	35	26	28	22	30	27	39	41	31	27	15	25	372
		Total	117	142	112	121	116	125	121	146	137	135	118	86	120	1,596
	Camden South	CPS	101	100	84	80	82	63	77	75	101	62	82	64	94	1,065
		CWS	17	33	22	19	17	24	32	16	32	26	24	23	41	326
		Total	118	133	106	99	99	87	109	91	133	88	106	87	135	1,391
	County Totals	CPS	416	428	370	380	391	358	368	421	425	394	378	314	390	5,033
		CWS	106	125	115	114	92	106	127	126	142	134	112	86	147	1,532
		Total	522	553	485	494	483	464	495	547	567	528	490	400	537	6,565
CAPE MAY	Cape May	CPS	77	73	46	61	67	61	57	69	92	45	70	76	74	868
		CWS	16	21	15	21	22	23	17	18	20	19	26	16	21	255
		Total	93	94	61	82	89	84	74	87	112	64	96	92	95	1,123
	County Totals	CPS	77	73	46	61	67	61	57	69	92	45	70	76	74	868
		Total	93	94	61	82	89	84	74	87	112	64	96	92	95	1,123
CUMBERLAND	Cumberland East	CPS	55	61	49	59	45	60	48	51	64	57	67	30	55	701
		CWS	23	22	16	9	16	12	13	21	18	22	5	18	18	213
		Total	78	83	65	68	61	72	61	72	82	79	72	48	73	914
	Cumberland West	CPS	96	146	107	93	107	109	112	120	132	109	121	70	116	1,438
		CWS	31	33	38	22	29	33	35	30	33	22	25	29	25	385
		Total	127	179	145	115	136	142	147	150	165	131	146	99	141	1,823
	County Totals	CPS	151	207	156	152	152	169	160	171	196	166	188	100	171	2,139
		CWS	54	55	54	31	45	45	48	51	51	44	30	47	43	598
		Total	205	262	210	183	197	214	208	222	247	210	218	147	214	2,737

Table 5: Monthly Count of CPS Reports and CWS Referrals Assigned to CP&P Local Offices

County	Local Office	Type of Referral	Referral Month												Total	
			Sep 2013	Oct 2013	Nov 2013	Dec 2013	Jan 2014	Feb 2014	Mar 2014	Apr 2014	May 2014	Jun 2014	Jul 2014	Aug 2014		Sep 2014
ESSEX	Essex Central	CPS	78	111	76	93	89	85	101	93	95	98	76	67	84	1,146
		CWS	32	36	40	30	41	27	36	26	36	28	28	20	30	410
		Total	110	147	116	123	130	112	137	119	131	126	104	87	114	1,556
	Essex North	CPS	61	85	68	54	68	50	88	68	78	56	37	43	68	824
		CWS	17	28	20	14	19	14	16	18	29	26	13	14	21	249
		Total	78	113	88	68	87	64	104	86	107	82	50	57	89	1,073
	Essex South	CPS	66	79	68	48	64	63	80	64	63	66	42	55	50	808
		CWS	30	16	41	22	23	14	32	28	25	16	23	25	31	326
		Total	96	95	109	70	87	77	112	92	88	82	65	80	81	1,134
	Newark Center City	CPS	88	84	93	68	81	83	104	79	85	80	73	62	83	1,063
		CWS	27	29	26	22	18	23	28	26	46	28	19	30	33	355
		Total	115	113	119	90	99	106	132	105	131	108	92	92	116	1,418
	Newark Northeast	CPS	103	96	84	81	101	63	90	77	103	74	83	70	78	1,103
		CWS	27	22	28	14	27	23	29	34	39	41	22	25	27	358
		Total	130	118	112	95	128	86	119	111	142	115	105	95	105	1,461
	Newark South	CPS	102	102	68	97	93	88	99	114	112	88	91	69	93	1,216
		CWS	25	19	40	28	26	30	59	36	42	31	29	36	32	433
		Total	127	121	108	125	119	118	158	150	154	119	120	105	125	1,649
Newark Adoption Office	CPS	0	4	0	0	1	0	0	1	0	0	0	0	0	6	
	CWS	1	1	1	3	0	0	0	0	0	0	0	0	0	6	
	Total	1	5	1	3	1	0	0	1	0	0	0	0	0	12	
County Totals	CPS	498	561	457	441	497	432	562	496	536	462	402	366	456	6,166	
	CWS	159	151	196	133	154	131	200	168	217	170	134	150	174	2,137	
	Total	657	712	653	574	651	563	762	664	753	632	536	516	630	8,303	
GLOUCESTER	Gloucester East	CPS	113	98	90	74	95	95	97	82	114	112	94	73	90	1,227
		CWS	28	27	18	26	31	19	32	27	31	22	21	25	28	335
		Total	141	125	108	100	126	114	129	109	145	134	115	98	118	1,562
	Gloucester West	CPS	111	109	109	92	108	110	112	107	116	125	103	82	119	1,403
		CWS	44	27	31	21	25	34	25	18	36	36	36	26	24	383
		Total	155	136	140	113	133	144	137	125	152	161	139	108	143	1,786
	County Totals	CPS	224	207	199	166	203	205	209	189	230	237	197	155	209	2,630
CWS		72	54	49	47	56	53	57	45	67	58	57	51	52	718	
Total		296	261	248	213	259	258	266	234	297	295	254	206	261	3,348	
HUDSON	Hudson Central	CPS	80	80	76	59	85	75	79	80	96	84	74	58	76	1,002
		CWS	28	29	30	23	18	23	21	22	32	19	28	28	34	335
		Total	108	109	106	82	103	98	100	102	128	103	102	86	110	1,337
	Hudson North	CPS	74	96	89	103	109	85	105	86	93	98	48	34	90	1,110
		CWS	16	38	19	20	33	18	25	19	25	32	19	17	25	306
		Total	90	134	108	123	142	103	130	105	118	130	67	51	115	1,416
	Hudson South	CPS	85	112	76	89	104	80	112	83	93	88	66	43	88	1,119
		CWS	20	24	33	17	28	25	44	33	41	29	19	31	21	365
		Total	105	136	109	106	132	105	156	116	134	117	85	74	109	1,484
	Hudson West	CPS	74	102	97	79	85	67	113	90	102	92	63	43	87	1,094
		CWS	30	25	21	39	31	26	38	24	27	24	21	21	25	352
		Total	104	127	118	118	116	93	151	114	129	116	84	64	112	1,446
County Totals	CPS	313	390	338	330	383	307	409	339	384	362	251	178	341	4,325	
	CWS	94	116	103	99	110	92	128	98	125	104	87	97	105	1,358	
	Total	407	506	441	429	493	399	537	437	509	466	338	275	446	5,683	
HUNTERDON	Hunterdon	CPS	21	51	31	35	47	38	55	39	40	33	44	32	34	500
		CWS	15	13	13	8	18	13	13	11	19	8	13	7	16	167
		Total	36	64	44	43	65	51	68	50	59	41	57	39	50	667
	County Totals	CPS	21	51	31	35	47	38	55	39	40	33	44	32	34	500
		CWS	15	13	13	8	18	13	13	11	19	8	13	7	16	167
Total	36	64	44	43	65	51	68	50	59	41	57	39	50	667		
MERCER	Mercer North	CPS	94	106	84	80	97	101	109	93	105	102	87	79	89	1,226
		CWS	17	18	33	28	27	25	23	28	43	38	25	27	35	367
		Total	111	124	117	108	124	126	132	121	148	140	112	106	124	1,593
	Mercer South	CPS	99	110	91	90	107	83	127	123	128	109	106	74	112	1,359
		CWS	25	19	29	17	20	19	37	35	23	30	28	23	25	330
		Total	124	129	120	107	127	102	164	158	151	139	134	97	137	1,689
	County Totals	CPS	193	216	175	170	204	184	236	216	233	211	193	153	201	2,585
CWS		42	37	62	45	47	44	60	63	66	68	53	50	60	697	
Total		235	253	237	215	251	228	296	279	299	279	246	203	261	3,282	

Table 5: Monthly Count of CPS Reports and CWS Referrals Assigned to CP&P Local Offices

County	Local Office	Type of Referral	Referral Month												Total		
			Sep 2013	Oct 2013	Nov 2013	Dec 2013	Jan 2014	Feb 2014	Mar 2014	Apr 2014	May 2014	Jun 2014	Jul 2014	Aug 2014		Sep 2014	
MIDDLESEX	Middlesex Central	CPS	80	100	74	73	82	71	87	78	87	79	65	51	81	1,008	
		CWS	17	28	22	13	22	19	21	22	20	19	19	22	22	266	
		Total	97	128	96	86	104	90	108	100	107	98	84	73	103	1,274	
	Middlesex Coastal	CPS	149	145	112	96	131	97	171	135	149	122	118	92	103	1,620	
		CWS	26	42	22	35	32	21	37	34	28	34	20	17	47	395	
		Total	175	187	134	131	163	118	208	169	177	156	138	109	150	2,015	
	Middlesex West	CPS	120	150	127	107	153	124	143	136	162	109	87	81	119	1,618	
		CWS	28	38	38	42	34	34	40	33	29	37	27	21	41	442	
		Total	148	188	165	149	187	158	183	169	191	146	114	102	160	2,060	
	County Totals	CPS	349	395	313	276	366	292	401	349	398	310	270	224	303	4,246	
		Total	420	503	395	366	454	366	499	438	475	400	336	284	413	5,349	
	MONMOUTH	Monmouth North	CPS	141	179	167	151	147	147	183	166	183	139	125	142	156	2,026
CWS			33	32	41	50	36	40	51	57	35	52	39	41	45	552	
Total			174	211	208	201	183	187	234	223	218	191	164	183	201	2,578	
Monmouth South		CPS	129	138	112	104	144	136	150	117	131	153	111	119	134	1,678	
		CWS	26	37	34	32	46	34	45	39	51	44	18	32	40	478	
		Total	155	175	146	136	190	170	195	156	182	197	129	151	174	2,156	
County Totals		CPS	270	317	279	255	291	283	333	283	314	292	236	261	290	3,704	
		Total	329	386	354	337	373	357	429	379	400	388	293	334	375	4,734	
MORRIS		Morris West	CPS	88	103	101	94	110	108	97	102	97	87	80	87	85	1,239
			CWS	35	31	23	29	26	26	26	33	32	32	26	30	32	381
	Total		123	134	124	123	136	134	123	135	129	119	106	117	117	1,620	
	Morris East	CPS	65	81	62	64	76	49	77	85	82	66	70	53	87	917	
		CWS	19	16	20	19	30	26	24	17	39	29	22	25	19	305	
		Total	84	97	82	83	106	75	101	102	121	95	92	78	106	1,222	
	County Totals	CPS	153	184	163	158	186	157	174	187	179	153	150	140	172	2,156	
		Total	207	231	206	206	242	209	224	237	250	214	198	195	223	2,842	
	OCEAN	Ocean North	CPS	147	179	149	127	146	134	128	149	161	148	132	110	139	1,849
			CWS	30	56	34	29	45	31	44	30	38	36	33	35	36	477
Total			177	235	183	156	191	165	172	179	199	184	165	145	175	2,326	
Ocean South		CPS	173	176	159	150	198	145	207	155	156	188	156	141	160	2,164	
		CWS	30	37	43	34	43	40	50	35	56	44	51	30	49	542	
		Total	203	213	202	184	241	185	257	190	212	232	207	171	209	2,706	
County Totals		CPS	320	355	308	277	344	279	335	304	317	336	288	251	299	4,013	
		Total	380	448	385	340	432	350	429	369	411	416	372	316	384	5,032	
PASSAIC		Passaic Central	CPS	131	194	161	139	165	152	200	184	203	159	128	112	140	2,068
			CWS	39	57	37	47	41	44	71	50	55	60	49	34	53	637
	Total		170	251	198	186	206	196	271	234	258	219	177	146	193	2,705	
	Passaic North	CPS	151	160	137	162	136	104	159	176	176	131	122	113	153	1,880	
		CWS	42	56	46	40	52	28	41	62	44	52	41	40	38	582	
		Total	193	216	183	202	188	132	200	238	220	183	163	153	191	2,462	
	County Totals	CPS	282	354	298	301	301	256	359	360	379	290	250	225	293	3,948	
		Total	363	467	381	388	394	328	471	472	478	402	340	299	384	5,167	
	SALEM	Salem	CPS	67	80	52	58	66	59	56	67	66	54	57	69	82	833
			CWS	17	17	22	14	19	17	21	12	19	21	19	13	19	230
Total			84	97	74	72	85	76	77	79	85	75	76	82	101	1,063	
County Totals		CPS	67	80	52	58	66	59	56	67	66	54	57	69	82	833	
		Total	84	97	74	72	85	76	77	79	85	75	76	82	101	1,063	
SOMERSET		Somerset	CPS	133	140	122	103	142	125	161	133	120	137	102	93	110	1,621
	CWS		27	50	26	29	32	34	35	38	39	43	23	26	29	431	
	Total		160	190	148	132	174	159	196	171	159	180	125	119	139	2,052	
	County Totals	CPS	133	140	122	103	142	125	161	133	120	137	102	93	110	1,621	
		Total	160	190	148	132	174	159	196	171	159	180	125	119	139	2,052	

Table 5: Monthly Count of CPS Reports and CWS Referrals Assigned to CP&P Local Offices

County	Local Office	Type of Referral	Referral Month												Total	
			Sep 2013	Oct 2013	Nov 2013	Dec 2013	Jan 2014	Feb 2014	Mar 2014	Apr 2014	May 2014	Jun 2014	Jul 2014	Aug 2014		Sep 2014
SUSSEX	Sussex	CPS	73	80	82	58	86	71	69	87	88	71	73	55	59	952
		CWS	15	22	28	15	29	15	19	19	28	21	23	20	28	282
		Total	88	102	110	73	115	86	88	106	116	92	96	75	87	1,234
	County Totals	CPS	73	80	82	58	86	71	69	87	88	71	73	55	59	952
		CWS	15	22	28	15	29	15	19	19	28	21	23	20	28	282
		Total	88	102	110	73	115	86	88	106	116	92	96	75	87	1,234
UNION	Union Central	CPS	56	91	76	75	69	73	79	93	69	73	59	36	63	912
		CWS	18	27	20	20	18	27	34	19	20	21	24	20	21	289
		Total	74	118	96	95	87	100	113	112	89	94	83	56	84	1,201
	Union East	CPS	82	100	87	96	109	77	103	110	79	92	63	49	69	1,116
		CWS	21	28	29	24	30	20	29	34	25	38	26	26	28	358
		Total	103	128	116	120	139	97	132	144	104	130	89	75	97	1,474
	Union West	CPS	65	88	67	70	80	77	59	67	88	59	47	58	83	908
		CWS	16	26	16	17	23	29	33	24	25	20	26	15	22	292
		Total	81	114	83	87	103	106	92	91	113	79	73	73	105	1,200
	County Totals	CPS	203	279	230	241	258	227	241	270	236	224	169	143	215	2,936
		CWS	55	81	65	61	71	76	96	77	70	79	76	61	71	939
		Total	258	360	295	302	329	303	337	347	306	303	245	204	286	3,875
WARREN	Warren	CPS	71	78	70	77	70	82	81	76	76	72	66	54	72	945
		CWS	23	27	15	19	25	24	30	27	23	27	11	19	21	291
		Total	94	105	85	96	95	106	111	103	99	99	77	73	93	1,236
	County Totals	CPS	71	78	70	77	70	82	81	76	76	72	66	54	72	945
		CWS	23	27	15	19	25	24	30	27	23	27	11	19	21	291
		Total	94	105	85	96	95	106	111	103	99	99	77	73	93	1,236
County CPS Referral Total		CPS	4,480	5,196	4,347	4,120	4,787	4,208	5,015	4,751	5,097	4,472	3,922	3,406	4,387	58,188
County CWS Referral Total		CWS	1,195	1,425	1,288	1,190	1,327	1,211	1,503	1,358	1,542	1,420	1,170	1,157	1,413	17,199
County Referral Total		Total	5,675	6,621	5,635	5,310	6,114	5,419	6,518	6,109	6,639	5,892	5,092	4,563	5,800	75,387
Central Region IAIU	CPS	57	80	61	35	63	54	60	60	75	60	54	40	55	754	
	CWS	0	0	0	0	0	0	0	0	0	0	0	0	0	0	
	Total	57	80	61	35	63	54	60	60	75	60	54	40	55	754	
Metro Region IAIU	CPS	50	59	49	47	42	44	91	63	57	69	43	25	47	686	
	CWS	0	0	0	0	0	0	0	0	0	0	0	1	0	1	
	Total	50	59	49	47	42	44	91	63	57	69	43	26	47	687	
Northern Region IAIU	CPS	68	83	65	63	77	66	88	60	85	59	50	41	58	863	
	CWS	0	0	2	0	0	0	0	0	0	0	0	0	0	2	
	Total	68	83	67	63	77	66	88	60	85	59	50	41	58	865	
Southern Region IAIU	CPS	65	108	70	54	69	50	78	79	106	74	61	52	64	930	
	CWS	0	0	0	0	0	0	0	0	0	0	0	0	0	0	
	Total	65	108	70	54	69	50	78	79	106	74	61	52	64	930	
IAIU CPS Subtotal		CPS	240	330	245	199	251	214	317	262	323	262	208	158	224	3,233
IAIU CWS Subtotal		CWS	0	0	2	0	0	0	0	0	0	0	1	1	3	
IAIU Subtotal		Total	240	330	247	199	251	214	317	262	323	262	208	159	225	3,236
County and IAIU CPS Subtotal		CPS	4,720	5,526	4,592	4,319	5,038	4,422	5,332	5,013	5,420	4,734	4,130	3,564	4,611	61,421
County and IAIU CWS Subtotal		CWS	1,195	1,425	1,290	1,190	1,327	1,211	1,503	1,358	1,542	1,420	1,170	1,158	1,414	17,202
Unable to Determine⁽¹⁾		Total	183	142	144	115	146	119	155	143	171	156	149	129	141	1,893
Other Offices		Total	4	2	2	2	2	0	4	2	3	3	0	0	0	24
Grand Total		Total	6,102	7,095	6,028	5,626	6,513	5,752	6,994	6,516	7,136	6,313	5,449	4,851	6,166	80,540

⁽¹⁾CPS Reports or CWS Referrals not assigned to an office through the Assignment Designee, but were assigned to an office for an assessment or investigation.