



## **Child Protection and Permanency**

# **Monthly Screening and Investigation Report August 2015**

Allison Blake, Ph.D., L.S.W.  
Commissioner

September 18, 2015



## Table of Contents

Table 1: NJ State Central Registry Activity: Monthly Child Abuse and Neglect Hotline Calls, Intakes and Assignments to Child Protection & Permanency (CP&P) Offices

---

Chart 1: CP&P Annual Trends in Child Protection Services (CPS) Reports and Child Welfare Services (CWS) Referrals

---

Table 2: Assignments to CP&P Offices: CPS Reports and CWS Referrals

---

Table 3: Source of CPS Reports and CWS Referrals

---

Table 4: Monthly Count of CPS Reports and CWS Referrals Assigned to Counties

---

Table 5: Monthly Count of CPS Reports and CWS Referrals Assigned to CP&P Local Offices

---

**Table 1: NJ State Central Registry Activity: Monthly Child Abuse and Neglect Hotline Calls, Intakes and Assignments to CP&P Offices<sup>1,2,7</sup>**

2014 - 2015	Hotline Call Activity				Intakes Recorded in NJ SPIRIT <sup>6,8</sup>												Assignments to CP&P Offices				
	Total Calls to SCR <sup>3</sup>	Abandon Calls <sup>4</sup>	Average Time to Answer (seconds)	Resulting NJS Intakes <sup>5</sup>	CPS Reports		CWS Referrals		No Action Required (NAR)		Related Information (RI)		Information & Referral (I&R)		Information Only (IO)		CPS Reports		CWS Referrals		Total
					n	%	n	%	n	%	n	%	n	%	n	%	n	%	n	%	
August 2014	11,306	277	17	12,610	3,629	28.8%	1,222	9.7%	331	2.6%	3,314	26.3%	1,321	10.5%	2,793	22.1%	3,629	74.8%	1,222	25.2%	4,851
September 2014	13,664	359	22	15,190	4,668	30.7%	1,496	9.8%	393	2.6%	3,949	26.0%	1,792	11.8%	2,892	19.0%	4,668	75.7%	1,498	24.3%	6,166
October 2014	15,268	435	26	16,868	5,510	32.7%	1,584	9.4%	555	3.3%	4,259	25.2%	1,946	11.5%	3,014	17.9%	5,509	77.6%	1,586	22.4%	7,095
November 2014	12,649	391	28	13,938	4,254	30.5%	1,416	10.2%	297	2.1%	3,895	27.9%	1,473	10.6%	2,603	18.7%	4,254	75.0%	1,416	25.0%	5,670
December 2014	13,289	468	29	14,588	4,511	30.9%	1,449	9.9%	303	2.1%	3,888	26.7%	1,620	11.1%	2,817	19.3%	4,509	75.7%	1,447	24.3%	5,956
January 2015	13,991	761	34	15,030	4,549	30.3%	1,390	9.2%	387	2.6%	3,939	26.2%	1,591	10.6%	3,174	21.1%	4,549	76.6%	1,391	23.4%	5,940
February 2015	12,881	537	35	14,010	4,573	32.6%	1,342	9.6%	418	3.0%	3,494	24.9%	1,516	10.8%	2,667	19.0%	4,574	77.3%	1,345	22.7%	5,919
March 2015	14,805	486	30	16,174	5,187	32.1%	1,580	9.8%	363	2.2%	4,021	24.9%	1,811	11.2%	3,212	19.9%	5,187	76.7%	1,580	23.3%	6,767
April 2015	13,698	409	26	15,107	4,967	32.9%	1,381	9.1%	366	2.4%	3,900	25.8%	1,615	10.7%	2,878	19.1%	4,967	78.2%	1,384	21.8%	6,351
May 2015	15,466	583	39	16,769	5,457	32.5%	1,560	9.3%	340	2.0%	4,437	26.5%	1,874	11.2%	3,101	18.5%	5,457	77.8%	1,561	22.2%	7,018
June 2015	13,760	405	29	15,189	4,887	32.2%	1,436	9.5%	373	2.5%	3,981	26.2%	1,659	10.9%	2,853	18.8%	4,887	77.3%	1,436	22.7%	6,323
July 2015	12,132	380	20	13,624	4,140	30.4%	1,273	9.3%	442	3.2%	3,569	26.2%	1,416	10.4%	2,784	20.4%	4,140	76.5%	1,273	23.5%	5,413
<b>August 2015</b>	<b>12,553</b>	<b>652</b>	<b>26</b>	<b>12,828</b>	<b>3,978</b>	<b>31.0%</b>	<b>1,257</b>	<b>9.8%</b>	<b>401</b>	<b>3.1%</b>	<b>3,701</b>	<b>28.9%</b>	<b>533</b>	<b>4.2%</b>	<b>2,958</b>	<b>23.1%</b>	<b>3,978</b>	<b>76.0%</b>	<b>1,256</b>	<b>24.0%</b>	<b>5,234</b>
<b>Monthly Average</b>	<b>13,497</b>	<b>473</b>	<b>28</b>	<b>14,763</b>	<b>4,639</b>	<b>31.4%</b>	<b>1,414</b>	<b>9.6%</b>	<b>382</b>	<b>2.6%</b>	<b>3,873</b>	<b>26.2%</b>	<b>1,551</b>	<b>10.5%</b>	<b>2,904</b>	<b>19.7%</b>	<b>4,639</b>	<b>76.6%</b>	<b>1,415</b>	<b>23.4%</b>	<b>6,054</b>
<b>Overall Total</b>	<b>175,462</b>	<b>6,143</b>		<b>191,925</b>	<b>60,310</b>		<b>18,386</b>		<b>4,969</b>		<b>50,347</b>		<b>20,167</b>		<b>37,746</b>		<b>60,308</b>	<b>76.6%</b>	<b>18,395</b>	<b>23.4%</b>	<b>78,703</b>

<sup>1</sup>Comes from three distinct sources: (1) the Automatic Call Distribution (ACD) phone system; which keeps a count of the number of calls and call routing; (2) Monthly NJSpirit Intakes; which record decision making on calls received by hotline screeners, and (3) NJSpirit extracts of assigned CWS Referrals and CPS Reports.

<sup>2</sup>The number of Intakes, CPS Reports, and CWS Referrals are based on an extract from NJSpirit. Data extracted by the Office of Research, Evaluation, and Reporting on **September 14, 2015** includes all Intakes, CPS Reports, and CWS Referrals received from **August 1, 2015 through August 31, 2015**.

<sup>3</sup>The number calls received through the ACD System that were directed to a screener from any call-in phone number.

<sup>4</sup>The number of calls received through the ACD System that are abandoned either while waiting in queue or while ringing.

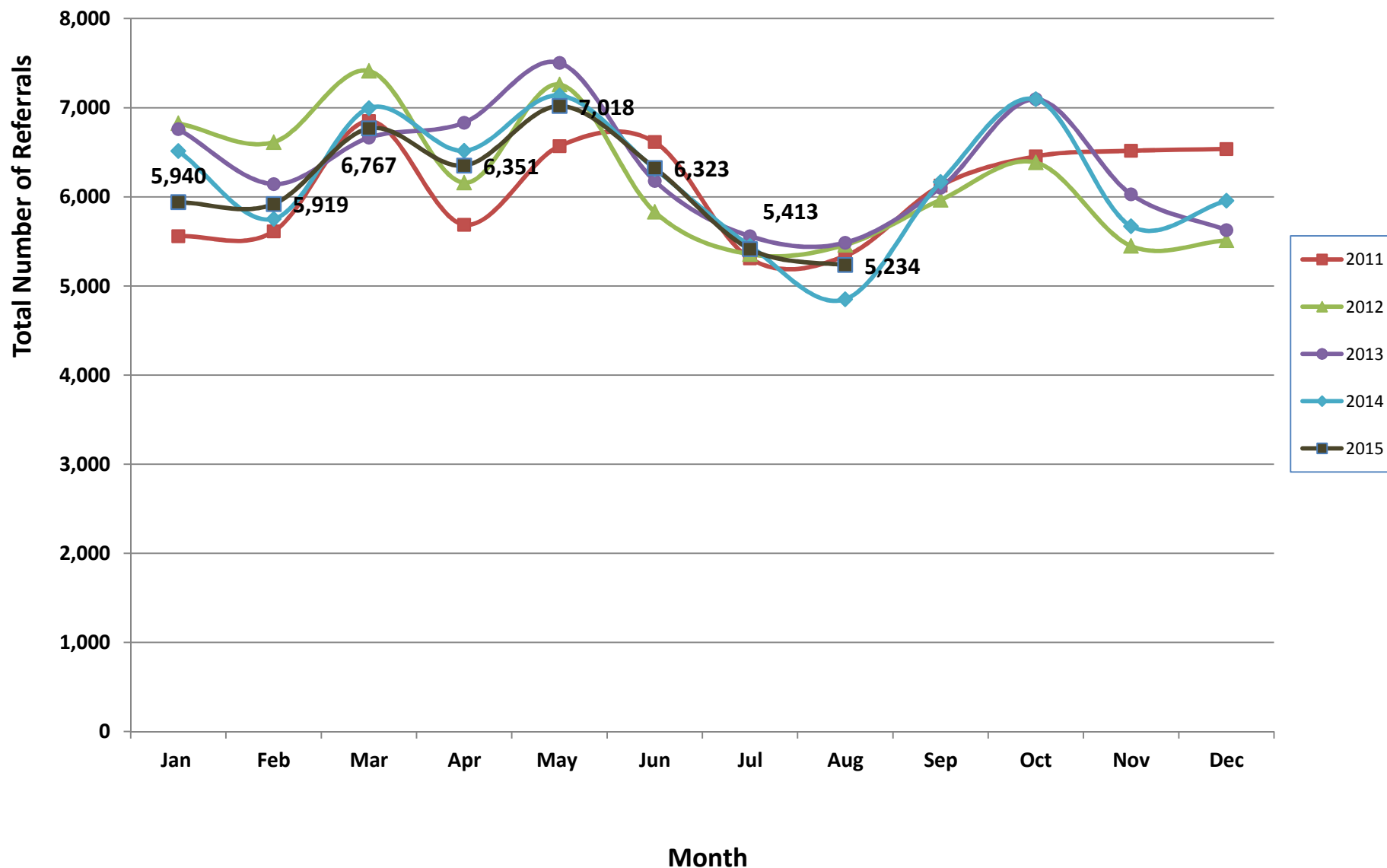
<sup>5</sup>The number of Intakes entered in NJSpirit from the number of calls received.

<sup>6</sup>The number of Intakes recorded in NJSpirit, by type of Intake. There is not a one-to-one relationship between an ACD call and an Intake; multiple calls to State Central Registry (SCR) may result in a single Intake, or one call may result in multiple Intakes.

<sup>7</sup>Intake: The process of documenting: a report of alleged abuse or neglect of a child (CPS); a request for services on behalf of a child, or a referral of a child for services (CWS); a call in which the caller provides additional or clarifying information about a current service case or active investigation (RI); informing a caller of, or referring a caller to, services available from other private or public sources (I&R); a call that requires no action by CP&P (NAR); or a response to a simple inquiry (IO).

<sup>8</sup>NJ SPIRIT: NJ Statewide Protection Investigation and Reporting Information Tool case management system

### CP&P Annual Trends in CPS Reports and CWS Referrals



**Table 2: Assignments to CP&P Offices: CPS Reports and CWS Referrals<sup>1</sup>**

Intake Date <sup>3</sup>		CPS Reports <sup>2</sup>	CWS Referrals <sup>2</sup>	Total Assignments <sup>2</sup>
2010	Jan 2010	5,154	963	6,117
	Feb 2010	4,446	804	5,250
	Mar 2010	6,314	1,147	7,461
	Apr 2010	5,465	1,040	6,505
	May 2010	5,797	1,177	6,974
	Jun 2010	5,734	1,157	6,891
	Jul 2010	4,270	1,017	5,287
	Aug 2010	4,110	1,028	5,138
	Sep 2010	4,922	1,012	5,934
	Oct 2010	5,105	1,136	6,241
	Nov 2010	4,842	1,028	5,870
	Dec 2010	4,472	909	5,381
	<b>Total</b>	<b>60,631</b>	<b>12,418</b>	<b>73,049</b>
2011	Jan 2011	4,616	942	5,558
	Feb 2011	4,672	939	5,611
	Mar 2011	5,701	1,148	6,849
	Apr 2011	4,682	1,005	5,687
	May 2011	5,362	1,207	6,569
	Jun 2011	5,299	1,315	6,614
	Jul 2011	4,200	1,108	5,308
	Aug 2011	4,170	1,166	5,336
	Sep 2011	4,872	1,253	6,125
	Oct 2011	5,322	1,132	6,454
	Nov 2011	5,220	1,296	6,516
	Dec 2011	5,363	1,173	6,536
	<b>Total</b>	<b>59,479</b>	<b>13,684</b>	<b>73,163</b>
2012	Jan 2012	5,530	1,294	6,824
	Feb 2012	5,358	1,255	6,613
	Mar 2012	5,985	1,428	7,413
	Apr 2012	4,899	1,259	6,158
	May 2012	5,874	1,385	7,259
	Jun 2012	4,640	1,190	5,830
	Jul 2012	4,254	1,101	5,355
	Aug 2012	4,325	1,135	5,460
	Sep 2012	4,769	1,196	5,965
	Oct 2012	5,178	1,207	6,385
	Nov 2012	4,310	1,138	5,448
	Dec 2012	4,394	1,116	5,510
	<b>Total</b>	<b>59,516</b>	<b>14,704</b>	<b>74,220</b>
2013	Jan 2013	5,464	1,296	6,760
	Feb 2013	4,966	1,177	6,143
	Mar 2013	5,355	1,309	6,664
	Apr 2013	5,430	1,402	6,832
	May 2013	5,993	1,510	7,503
	Jun 2013	4,947	1,230	6,177
	Jul 2013	4,330	1,228	5,558
	Aug 2013	4,330	1,155	5,485
	Sep 2013	4,851	1,251	6,102
	Oct 2013	5,614	1,481	7,095
	Nov 2013	4,694	1,334	6,028
	Dec 2013	4,397	1,229	5,626
	<b>Total</b>	<b>60,371</b>	<b>15,602</b>	<b>75,973</b>

**Table 2: Assignments to CP&P Offices: CPS Reports and CWS Referrals<sup>1</sup>**

Intake Date <sup>3</sup>		CPS Reports <sup>2</sup>	CWS Referrals <sup>2</sup>	Total Assignments <sup>2</sup>
<b>2014</b>	Jan 2014	5,097	1,416	6,513
	Feb 2014	4,457	1,295	5,752
	Mar 2014	5,408	1,586	6,994
	Apr 2014	5,049	1,467	6,516
	May 2014	5,501	1,635	7,136
	Jun 2014	4,796	1,517	6,313
	Jul 2014	4,202	1,247	5,449
	Aug 2014	3,629	1,222	4,851
	Sep 2014	4,668	1,498	6,166
	Oct 2014	5,509	1,586	7,095
	Nov 2014	4,254	1,416	5,670
	Dec 2014	4,509	1,447	5,956
	<b>Total</b>	<b>57,079</b>	<b>17,332</b>	<b>74,411</b>
<b>2015</b>	Jan 2015	4,549	1,391	5,940
	Feb 2015	4,574	1,345	5,919
	Mar 2015	5,187	1,580	6,767
	Apr 2015	4,967	1,384	6,351
	May 2015	5,457	1,561	7,018
	Jun 2015	4,887	1,436	6,323
	Jul 2015	4,140	1,273	5,413
	<b>August 2015</b>	<b>3,978</b>	<b>1,256</b>	<b>5,234</b>
<b>Total</b>	<b>37,739</b>	<b>11,226</b>	<b>31,995</b>	
<b>Grand Total</b>	<b>334,815</b>	<b>84,966</b>	<b>402,811</b>	

<sup>1</sup>Source of Data: NJ SPIRIT

<sup>2</sup>A CPS Report or a CWS Referral may include multiple children in a family, with one or more allegation or request for services. In these cases, each CPS Report or CWS Referral is counted once - the CPS Report or the CWS Referral is the unit of analysis rather than the child.

<sup>3</sup>Prior to January 2014, the number of CPS Reports and CWS Referrals was based on the type of assignment of the CPS Report or CWS Referral. Beginning in January 2014, the number of CPS Reports and CWS Referrals is based on the number of CPS Reports and CWS Referrals received.

**Table 3: Source of CPS Reports and CWS Referrals**

	Source	Aug 2014	Sep 2014	Oct 2014	Nov 2014	Dec 2014	Jan 2015	Feb 2015	Mar 2015	Apr 2015	May 2015	Jun 2015	Jul 2015	August 2015		13 Month Total	
CPS Reports and CWS Referrals	School Staff	90	1,200	1,935	1,395	1,481	1,504	1,629	1,894	1,487	1,868	1,166	183	75	1%	15,907	20%
	Healthcare Provider	704	774	824	735	774	701	720	825	861	812	808	816	832	16%	10,186	13%
	Law Enforcement	934	922	898	835	820	870	783	933	925	1056	1093	1082	1,010	19%	12,161	15%
	Government Agency	429	470	474	350	402	362	377	465	445	370	422	495	449	9%	5,510	7%
	Parent	549	591	603	517	520	510	506	539	493	578	581	594	592	11%	7,173	9%
	Relative/Friend/Neighbor	586	553	568	418	406	468	393	491	484	540	546	604	595	11%	6,652	8%
	Anonymous	640	661	772	614	659	612	607	687	641	802	725	611	622	12%	8,653	11%
	CP&P	111	119	113	94	113	109	120	110	117	103	125	119	110	2%	1,463	2%
	Court/Legal	122	111	129	78	114	118	95	108	116	128	148	155	113	2%	1,535	2%
	Community Group/Individual	241	271	270	209	211	233	263	260	295	266	232	280	297	6%	3,328	4%
	Facility Staff (incl Correctional Facility)	88	72	92	82	89	107	79	71	106	76	89	92	105	2%	1,148	1%
	Child (Self)	38	63	47	42	46	40	35	39	37	49	41	44	67	1%	588	1%
	Other	312	342	354	293	308	291	298	328	332	353	330	327	344	7%	4,212	5%
	Daycare/Babysitter	7	17	16	8	13	15	14	17	12	17	17	11	23	0%	187	0%
<b>Total</b>		<b>4,851</b>	<b>6,166</b>	<b>7,095</b>	<b>5,670</b>	<b>5,956</b>	<b>5,940</b>	<b>5,919</b>	<b>6,767</b>	<b>6,351</b>	<b>7,018</b>	<b>6,323</b>	<b>5,413</b>	<b>5,234</b>		<b>78,703</b>	

**Table 4: Monthly Count of CPS Reports and CWS Referrals Assigned to Counties**

County														Average # of Assignments the Last 12 Months	Jul 15 to Aug 15 Numerical Difference
	Aug 2014	Sep 2014	Oct 2014	Nov 2014	Dec 2014	Jan 2015	Feb 2015	Mar 2015	Apr 2015	May 2015	Jun 2015	Jul 2015	August 2015		
Atlantic	221	233	292	234	245	233	210	269	277	275	239	218	227	246	9
Bergen	235	337	392	328	323	323	324	386	335	382	296	284	257	331	-27
Burlington	248	251	335	238	277	269	305	285	319	322	274	263	284	285	21
Camden	400	537	594	502	464	487	505	534	506	551	552	449	438	510	-11
Cape May	92	95	87	59	71	82	68	93	85	80	69	78	86	79	8
Cumberland	147	214	224	189	207	213	201	253	217	249	217	173	152	209	-21
Essex	516	630	725	579	622	617	597	769	699	779	642	583	565	651	-18
Gloucester	206	261	300	228	232	238	223	276	288	244	259	258	255	255	-3
Hudson	275	446	532	349	398	414	396	442	382	546	471	352	325	421	-27
Hunterdon	39	50	47	33	65	30	52	45	50	51	47	48	38	46	-10
Mercer	203	261	294	246	230	244	209	264	244	249	262	198	226	244	28
Middlesex	284	413	458	341	418	424	464	479	418	471	423	335	317	413	-18
Monmouth	334	375	413	346	354	325	373	440	374	378	346	301	301	361	0
Morris	195	223	237	227	183	237	190	224	208	246	233	186	175	214	-11
Ocean	316	384	456	387	381	374	364	398	402	418	388	376	369	391	-7
Passaic	299	384	427	382	417	361	387	443	389	534	412	317	345	400	28
Salem	82	101	96	50	66	87	60	71	96	105	81	68	53	78	-15
Somerset	119	139	152	134	132	126	131	153	154	178	163	158	128	146	-30
Sussex	75	87	84	96	91	86	85	109	104	97	112	103	84	95	-19
Union	204	286	354	311	288	322	278	360	307	299	305	228	215	296	-13
Warren	73	93	113	87	102	97	119	92	101	117	102	89	94	101	5
<b>County Subtotals</b>	<b>4,563</b>	<b>5,800</b>	<b>6,612</b>	<b>5,346</b>	<b>5,566</b>	<b>5,589</b>	<b>5,541</b>	<b>6,385</b>	<b>5,955</b>	<b>6,571</b>	<b>5,893</b>	<b>5,065</b>	<b>4,934</b>	<b>5,771</b>	<b>-131</b>
Central Region IAIU	40	55	70	54	61	48	50	50	51	54	54	24	41	51	17
Metro Region IAIU	26	47	70	45	49	53	58	67	54	70	66	56	30	55	-26
Northern Region IAIU	41	58	80	47	67	62	61	73	70	80	65	61	43	64	-18
Southern Region IAIU	52	64	85	59	89	60	68	68	78	97	88	63	59	73	-4
<b>IAIU Subtotals</b>	<b>159</b>	<b>224</b>	<b>305</b>	<b>205</b>	<b>266</b>	<b>223</b>	<b>237</b>	<b>258</b>	<b>253</b>	<b>301</b>	<b>273</b>	<b>204</b>	<b>173</b>	<b>244</b>	<b>-31</b>
<b>Unable to Determine<sup>1</sup></b>	<b>129</b>	<b>141</b>	<b>174</b>	<b>117</b>	<b>123</b>	<b>127</b>	<b>138</b>	<b>118</b>	<b>141</b>	<b>144</b>	<b>153</b>	<b>142</b>	<b>124</b>	<b>137</b>	<b>-18</b>
<b>Other Offices</b>	<b>0</b>	<b>1</b>	<b>4</b>	<b>2</b>	<b>1</b>	<b>1</b>	<b>3</b>	<b>6</b>	<b>2</b>	<b>2</b>	<b>4</b>	<b>2</b>	<b>3</b>	<b>3</b>	<b>1</b>
<b>Grand Total</b>	<b>4,851</b>	<b>6,166</b>	<b>7,095</b>	<b>5,670</b>	<b>5,956</b>	<b>5,940</b>	<b>5,919</b>	<b>6,767</b>	<b>6,351</b>	<b>7,018</b>	<b>6,323</b>	<b>5,413</b>	<b>5,234</b>	<b>6,154</b>	<b>-179</b>

<sup>1</sup>CPS Reports or CWS Referrals not assigned to an office through the Assignment Designee, but were assigned to an office for an assessment or investigation.





**Table 5: Monthly Count of CPS Reports and CWS Referrals Assigned to CP&P Local Offices**

County	Local Office	Type of Referral														Total
			Aug 2014	Sep 2014	Oct 2014	Nov 2014	Dec 2014	Jan 2015	Feb 2015	Mar 2015	Apr 2015	May 2015	Jun 2015	Jul 2015	August 2015	
ATLANTIC	Atlantic East	CPS	98	108	125	100	120	106	77	116	134	121	115	100	107	1,320
		CWS	32	23	35	36	24	29	26	32	32	38	24	30	26	361
		<b>Total</b>	<b>130</b>	<b>131</b>	<b>160</b>	<b>136</b>	<b>144</b>	<b>135</b>	<b>103</b>	<b>148</b>	<b>166</b>	<b>159</b>	<b>139</b>	<b>130</b>	<b>133</b>	<b>1,681</b>
	Atlantic West	CPS	71	82	103	75	77	76	85	101	86	96	81	72	77	1,005
		CWS	20	20	29	23	24	22	22	20	25	20	19	16	17	260
		<b>Total</b>	<b>91</b>	<b>102</b>	<b>132</b>	<b>98</b>	<b>101</b>	<b>98</b>	<b>107</b>	<b>121</b>	<b>111</b>	<b>116</b>	<b>100</b>	<b>88</b>	<b>94</b>	<b>1,265</b>
	County Totals	CPS	169	190	228	175	197	182	162	217	220	217	196	172	184	2,325
		CWS	52	43	64	59	48	51	48	52	57	58	43	46	43	621
		<b>Total</b>	<b>221</b>	<b>233</b>	<b>292</b>	<b>234</b>	<b>245</b>	<b>233</b>	<b>210</b>	<b>269</b>	<b>277</b>	<b>275</b>	<b>239</b>	<b>218</b>	<b>227</b>	<b>2,946</b>
BERGEN	Bergen Central	CPS	67	107	111	109	94	97	94	103	110	123	102	83	72	1,200
		CWS	24	38	51	49	39	39	32	37	36	34	32	29	29	440
		<b>Total</b>	<b>91</b>	<b>145</b>	<b>162</b>	<b>158</b>	<b>133</b>	<b>136</b>	<b>126</b>	<b>140</b>	<b>146</b>	<b>157</b>	<b>134</b>	<b>112</b>	<b>101</b>	<b>1,640</b>
	Bergen South	CPS	102	142	181	124	136	144	144	183	133	175	120	127	106	1,711
		CWS	42	50	49	46	54	43	54	63	56	50	42	45	50	594
		<b>Total</b>	<b>144</b>	<b>192</b>	<b>230</b>	<b>170</b>	<b>190</b>	<b>187</b>	<b>198</b>	<b>246</b>	<b>189</b>	<b>225</b>	<b>162</b>	<b>172</b>	<b>156</b>	<b>2,305</b>
	County Totals	CPS	169	249	292	233	230	241	238	286	243	298	222	210	178	2,911
		CWS	66	88	100	95	93	82	86	100	92	84	74	74	79	1,034
		<b>Total</b>	<b>235</b>	<b>337</b>	<b>392</b>	<b>328</b>	<b>323</b>	<b>323</b>	<b>324</b>	<b>386</b>	<b>335</b>	<b>382</b>	<b>296</b>	<b>284</b>	<b>257</b>	<b>3,945</b>
BURLINGTON	Burlington East	CPS	89	88	115	107	110	110	116	105	138	125	99	97	110	1,299
		CWS	35	32	38	25	30	25	33	29	28	37	26	38	36	376
		<b>Total</b>	<b>124</b>	<b>120</b>	<b>153</b>	<b>132</b>	<b>140</b>	<b>135</b>	<b>149</b>	<b>134</b>	<b>166</b>	<b>162</b>	<b>125</b>	<b>135</b>	<b>146</b>	<b>1,675</b>
	Burlington West	CPS	90	89	145	80	100	104	121	119	117	122	115	96	97	1,298
		CWS	34	42	37	26	37	30	35	32	36	38	34	32	41	413
		<b>Total</b>	<b>124</b>	<b>131</b>	<b>182</b>	<b>106</b>	<b>137</b>	<b>134</b>	<b>156</b>	<b>151</b>	<b>153</b>	<b>160</b>	<b>149</b>	<b>128</b>	<b>138</b>	<b>1,711</b>
	County Totals	CPS	179	177	260	187	210	214	237	224	255	247	214	193	207	2,597
		CWS	69	74	75	51	67	55	68	61	64	75	60	70	77	789
		<b>Total</b>	<b>248</b>	<b>251</b>	<b>335</b>	<b>238</b>	<b>277</b>	<b>269</b>	<b>305</b>	<b>285</b>	<b>319</b>	<b>322</b>	<b>274</b>	<b>263</b>	<b>284</b>	<b>3,386</b>
CAMDEN	Camden Central	CPS	97	109	151	100	103	123	123	127	115	122	121	105	93	1,396
		CWS	30	35	26	28	23	35	28	23	38	29	27	29	25	351
		<b>Total</b>	<b>127</b>	<b>144</b>	<b>177</b>	<b>128</b>	<b>126</b>	<b>158</b>	<b>151</b>	<b>150</b>	<b>163</b>	<b>151</b>	<b>148</b>	<b>134</b>	<b>118</b>	<b>1,747</b>
	Camden East	CPS	82	92	116	91	93	74	93	89	102	119	125	81	105	1,157
		CWS	18	46	37	39	24	31	19	30	31	30	30	30	28	365
		<b>Total</b>	<b>100</b>	<b>138</b>	<b>153</b>	<b>130</b>	<b>117</b>	<b>105</b>	<b>112</b>	<b>119</b>	<b>133</b>	<b>149</b>	<b>155</b>	<b>111</b>	<b>133</b>	<b>1,522</b>
	Camden North	CPS	71	95	122	105	73	89	85	106	89	101	116	82	77	1,134
		CWS	15	25	23	28	33	31	29	33	31	33	36	26	24	343
		<b>Total</b>	<b>86</b>	<b>120</b>	<b>145</b>	<b>133</b>	<b>106</b>	<b>120</b>	<b>114</b>	<b>139</b>	<b>120</b>	<b>134</b>	<b>152</b>	<b>108</b>	<b>101</b>	<b>1,477</b>
	Camden South	CPS	64	94	92	88	84	78	96	97	88	92	73	76	66	1,022
		CWS	23	41	27	23	31	26	32	29	12	25	24	20	20	313
		<b>Total</b>	<b>87</b>	<b>135</b>	<b>119</b>	<b>111</b>	<b>115</b>	<b>104</b>	<b>128</b>	<b>126</b>	<b>100</b>	<b>117</b>	<b>97</b>	<b>96</b>	<b>86</b>	<b>1,335</b>
	County Totals	CPS	314	390	481	384	353	364	397	419	394	434	435	344	341	4,709
		CWS	86	147	113	118	111	123	108	115	112	117	117	105	97	1,372
		<b>Total</b>	<b>400</b>	<b>537</b>	<b>594</b>	<b>502</b>	<b>464</b>	<b>487</b>	<b>505</b>	<b>534</b>	<b>506</b>	<b>551</b>	<b>552</b>	<b>449</b>	<b>438</b>	<b>6,081</b>
CAPE MAY	Cape May	CPS	76	74	73	47	54	63	54	78	63	66	57	63	69	768
		CWS	16	21	14	12	17	19	14	15	22	14	12	15	17	191
		<b>Total</b>	<b>92</b>	<b>95</b>	<b>87</b>	<b>59</b>	<b>71</b>	<b>82</b>	<b>68</b>	<b>93</b>	<b>85</b>	<b>80</b>	<b>69</b>	<b>78</b>	<b>86</b>	<b>959</b>
	County Totals	CPS	76	74	73	47	54	63	54	78	63	66	57	63	69	768
		CWS	16	21	14	12	17	19	14	15	22	14	12	15	17	191
		<b>Total</b>	<b>92</b>	<b>95</b>	<b>87</b>	<b>59</b>	<b>71</b>	<b>82</b>	<b>68</b>	<b>93</b>	<b>85</b>	<b>80</b>	<b>69</b>	<b>78</b>	<b>86</b>	<b>959</b>
CUMBERLAND	Cumberland East	CPS	30	55	69	56	43	51	52	63	50	70	66	33	36	638
		CWS	18	18	17	14	22	16	16	15	12	25	19	6	9	198
		<b>Total</b>	<b>48</b>	<b>73</b>	<b>86</b>	<b>70</b>	<b>65</b>	<b>67</b>	<b>68</b>	<b>78</b>	<b>62</b>	<b>95</b>	<b>85</b>	<b>39</b>	<b>45</b>	<b>836</b>
	Cumberland West	CPS	70	116	102	91	107	121	105	143	117	123	99	108	81	1,302
		CWS	29	25	36	28	35	25	28	32	38	31	33	26	26	366
		<b>Total</b>	<b>99</b>	<b>141</b>	<b>138</b>	<b>119</b>	<b>142</b>	<b>146</b>	<b>133</b>	<b>175</b>	<b>155</b>	<b>154</b>	<b>132</b>	<b>134</b>	<b>107</b>	<b>1,668</b>
	County Totals	CPS	100	171	171	147	150	172	157	206	167	193	165	141	117	1,940
		CWS	47	43	53	42	57	41	44	47	50	56	52	32	35	564
		<b>Total</b>	<b>147</b>	<b>214</b>	<b>224</b>	<b>189</b>	<b>207</b>	<b>213</b>	<b>201</b>	<b>253</b>	<b>217</b>	<b>249</b>	<b>217</b>	<b>173</b>	<b>152</b>	<b>2,504</b>

Data in this report is preliminary and may differ from any final report. This report is produced to ensure continuous quality improvement throughout DCF.



**Table 5: Monthly Count of CPS Reports and CWS Referrals Assigned to CP&P Local Offices**

County	Local Office	Type of Referral														Total
			Aug 2014	Sep 2014	Oct 2014	Nov 2014	Dec 2014	Jan 2015	Feb 2015	Mar 2015	Apr 2015	May 2015	Jun 2015	Jul 2015	August 2015	
ESSEX	Essex Central	CPS	67	84	104	73	77	97	68	92	105	118	81	76	85	1,042
		CWS	20	30	42	36	36	34	31	25	32	36	27	39	41	388
		<b>Total</b>	<b>87</b>	<b>114</b>	<b>146</b>	<b>109</b>	<b>113</b>	<b>131</b>	<b>99</b>	<b>117</b>	<b>137</b>	<b>154</b>	<b>108</b>	<b>115</b>	<b>126</b>	<b>1,430</b>
	Essex North	CPS	43	68	65	61	59	50	48	63	78	75	67	42	40	719
		CWS	14	21	25	20	16	14	23	26	20	20	23	18	17	240
		<b>Total</b>	<b>57</b>	<b>89</b>	<b>90</b>	<b>81</b>	<b>75</b>	<b>64</b>	<b>71</b>	<b>89</b>	<b>98</b>	<b>95</b>	<b>90</b>	<b>60</b>	<b>57</b>	<b>959</b>
	Essex South	CPS	55	50	61	48	61	70	70	95	75	71	51	49	49	756
		CWS	25	31	22	30	29	24	26	22	17	16	20	19	16	281
		<b>Total</b>	<b>80</b>	<b>81</b>	<b>83</b>	<b>78</b>	<b>90</b>	<b>94</b>	<b>96</b>	<b>117</b>	<b>92</b>	<b>87</b>	<b>71</b>	<b>68</b>	<b>65</b>	<b>1,037</b>
	Newark Center City	CPS	62	83	90	68	91	75	74	110	90	106	72	61	64	982
		CWS	30	33	40	28	24	19	21	33	15	40	27	23	29	333
		<b>Total</b>	<b>92</b>	<b>116</b>	<b>130</b>	<b>96</b>	<b>115</b>	<b>94</b>	<b>95</b>	<b>143</b>	<b>105</b>	<b>146</b>	<b>99</b>	<b>84</b>	<b>93</b>	<b>1,315</b>
	Newark Northeast	CPS	70	78	97	80	68	74	101	107	106	94	108	81	69	1,064
		CWS	25	27	28	25	40	36	27	45	27	34	28	31	26	373
		<b>Total</b>	<b>95</b>	<b>105</b>	<b>125</b>	<b>105</b>	<b>108</b>	<b>110</b>	<b>128</b>	<b>152</b>	<b>133</b>	<b>128</b>	<b>136</b>	<b>112</b>	<b>95</b>	<b>1,437</b>
Newark South	CPS	69	93	124	80	88	94	81	120	97	127	102	113	94	1,188	
	CWS	36	32	27	30	33	30	26	31	37	42	36	31	35	391	
	<b>Total</b>	<b>105</b>	<b>125</b>	<b>151</b>	<b>110</b>	<b>121</b>	<b>124</b>	<b>107</b>	<b>151</b>	<b>134</b>	<b>169</b>	<b>138</b>	<b>144</b>	<b>129</b>	<b>1,579</b>	
County Totals	CPS	366	456	541	410	444	460	442	587	551	591	481	422	401	5,751	
	CWS	150	174	184	169	178	157	154	182	148	188	161	161	164	2,006	
	<b>Total</b>	<b>516</b>	<b>630</b>	<b>725</b>	<b>579</b>	<b>622</b>	<b>617</b>	<b>596</b>	<b>769</b>	<b>699</b>	<b>779</b>	<b>642</b>	<b>583</b>	<b>565</b>	<b>7,757</b>	
GLOUCESTER	Gloucester East	CPS	73	90	101	85	85	95	96	110	114	88	85	85	1,107	
		CWS	25	28	37	39	28	18	20	29	34	18	25	36	337	
		<b>Total</b>	<b>98</b>	<b>118</b>	<b>138</b>	<b>124</b>	<b>113</b>	<b>113</b>	<b>116</b>	<b>139</b>	<b>148</b>	<b>106</b>	<b>110</b>	<b>121</b>	<b>132</b>	<b>1,444</b>
	Gloucester West	CPS	82	119	126	74	96	96	80	113	115	114	121	118	93	1,254
		CWS	26	24	36	30	23	29	27	24	25	24	28	19	30	315
		<b>Total</b>	<b>108</b>	<b>143</b>	<b>162</b>	<b>104</b>	<b>119</b>	<b>125</b>	<b>107</b>	<b>137</b>	<b>140</b>	<b>138</b>	<b>149</b>	<b>137</b>	<b>123</b>	<b>1,569</b>
	County Totals	CPS	155	209	227	159	181	191	176	223	229	202	206	203	191	2,361
		CWS	51	52	73	69	51	47	47	53	59	42	53	55	64	652
<b>Total</b>		<b>206</b>	<b>261</b>	<b>300</b>	<b>228</b>	<b>232</b>	<b>238</b>	<b>223</b>	<b>276</b>	<b>288</b>	<b>244</b>	<b>259</b>	<b>258</b>	<b>255</b>	<b>3,013</b>	
HUDSON	Hudson Central	CPS	58	76	94	49	56	73	84	90	89	112	88	71	940	
		CWS	28	34	33	31	29	27	25	30	30	22	30	24	343	
		<b>Total</b>	<b>86</b>	<b>110</b>	<b>127</b>	<b>80</b>	<b>85</b>	<b>100</b>	<b>109</b>	<b>120</b>	<b>119</b>	<b>134</b>	<b>118</b>	<b>95</b>	<b>90</b>	<b>1,283</b>
	Hudson North	CPS	34	90	99	53	74	69	70	73	65	107	96	60	890	
		CWS	17	25	33	23	26	30	22	29	19	28	27	18	297	
		<b>Total</b>	<b>51</b>	<b>115</b>	<b>132</b>	<b>76</b>	<b>100</b>	<b>99</b>	<b>92</b>	<b>102</b>	<b>84</b>	<b>135</b>	<b>123</b>	<b>78</b>	<b>70</b>	<b>1,187</b>
	Hudson South	CPS	43	88	95	59	88	77	80	87	70	103	93	79	962	
		CWS	31	21	36	30	17	23	32	31	23	46	29	23	342	
		<b>Total</b>	<b>74</b>	<b>109</b>	<b>131</b>	<b>89</b>	<b>105</b>	<b>100</b>	<b>112</b>	<b>118</b>	<b>93</b>	<b>149</b>	<b>122</b>	<b>102</b>	<b>90</b>	<b>1,304</b>
	Hudson West	CPS	43	87	113	85	81	86	65	77	71	103	77	57	945	
		CWS	21	25	29	19	27	29	18	25	15	25	31	20	284	
		<b>Total</b>	<b>64</b>	<b>112</b>	<b>142</b>	<b>104</b>	<b>108</b>	<b>115</b>	<b>83</b>	<b>102</b>	<b>86</b>	<b>128</b>	<b>108</b>	<b>77</b>	<b>75</b>	<b>1,229</b>
County Totals	CPS	178	341	401	246	299	305	299	327	295	425	354	267	3,737		
	CWS	97	105	131	103	99	109	97	115	87	121	117	85	1,266		
	<b>Total</b>	<b>275</b>	<b>446</b>	<b>532</b>	<b>349</b>	<b>398</b>	<b>414</b>	<b>396</b>	<b>442</b>	<b>382</b>	<b>546</b>	<b>471</b>	<b>352</b>	<b>325</b>	<b>5,003</b>	
HUNTERDON	Hunterdon	CPS	32	34	38	23	46	19	39	28	33	32	35	391		
		CWS	7	16	9	10	19	11	13	17	17	19	15	166		
		<b>Total</b>	<b>39</b>	<b>50</b>	<b>47</b>	<b>33</b>	<b>65</b>	<b>30</b>	<b>52</b>	<b>45</b>	<b>50</b>	<b>51</b>	<b>47</b>	<b>48</b>	<b>557</b>	
	County Totals	CPS	32	34	38	23	46	19	39	28	33	32	35	391		
		<b>Total</b>	<b>39</b>	<b>50</b>	<b>47</b>	<b>33</b>	<b>65</b>	<b>30</b>	<b>52</b>	<b>45</b>	<b>50</b>	<b>51</b>	<b>47</b>	<b>48</b>	<b>557</b>	
MERCER	Mercer North	CPS	79	89	123	96	81	97	78	82	98	94	92	1,079		
		CWS	27	35	28	42	30	30	29	43	23	27	25	368		
		<b>Total</b>	<b>106</b>	<b>124</b>	<b>151</b>	<b>138</b>	<b>111</b>	<b>127</b>	<b>107</b>	<b>125</b>	<b>121</b>	<b>121</b>	<b>117</b>	<b>99</b>	<b>1,447</b>	
	Mercer South	CPS	74	112	117	88	96	87	75	110	94	96	103	1,128		
		CWS	23	25	26	20	23	30	27	29	29	32	42	329		
		<b>Total</b>	<b>97</b>	<b>137</b>	<b>143</b>	<b>108</b>	<b>119</b>	<b>117</b>	<b>102</b>	<b>139</b>	<b>123</b>	<b>128</b>	<b>145</b>	<b>1,457</b>		
	County Totals	CPS	153	201	240	184	177	184	153	192	192	190	195	2,207		
CWS		50	60	54	62	53	60	56	72	52	59	67	697			
<b>Total</b>		<b>203</b>	<b>261</b>	<b>294</b>	<b>246</b>	<b>230</b>	<b>244</b>	<b>209</b>	<b>264</b>	<b>244</b>	<b>249</b>	<b>262</b>	<b>2,904</b>			

Data in this report is preliminary and may differ from any final report. This report is produced to ensure continuous quality improvement throughout DCF.



**Table 5: Monthly Count of CPS Reports and CWS Referrals Assigned to CP&P Local Offices**

County	Local Office	Type of Referral														Total
			Aug 2014	Sep 2014	Oct 2014	Nov 2014	Dec 2014	Jan 2015	Feb 2015	Mar 2015	Apr 2015	May 2015	Jun 2015	Jul 2015	August 2015	
MIDDLESEX	Middlesex Central	CPS	51	81	90	54	64	77	75	83	85	89	65	52	56	866
		CWS	22	22	24	14	24	27	16	20	21	27	17	25	18	259
		<b>Total</b>	<b>73</b>	<b>103</b>	<b>114</b>	<b>68</b>	<b>88</b>	<b>104</b>	<b>91</b>	<b>103</b>	<b>106</b>	<b>116</b>	<b>82</b>	<b>77</b>	<b>74</b>	<b>1,125</b>
	Middlesex Coastal	CPS	92	103	137	105	121	131	135	154	122	151	128	101	105	1,480
		CWS	17	47	38	36	37	32	46	49	34	37	44	43	24	460
		<b>Total</b>	<b>109</b>	<b>150</b>	<b>175</b>	<b>141</b>	<b>158</b>	<b>163</b>	<b>181</b>	<b>203</b>	<b>156</b>	<b>188</b>	<b>172</b>	<b>144</b>	<b>129</b>	<b>1,940</b>
	Middlesex West	CPS	81	119	134	86	124	129	155	139	122	138	132	94	84	1,453
		CWS	21	41	35	46	48	28	37	34	34	29	37	20	30	410
		<b>Total</b>	<b>102</b>	<b>160</b>	<b>169</b>	<b>132</b>	<b>172</b>	<b>157</b>	<b>192</b>	<b>173</b>	<b>156</b>	<b>167</b>	<b>169</b>	<b>114</b>	<b>114</b>	<b>1,863</b>
	County Totals	CPS	224	303	361	245	309	337	365	376	329	378	325	247	245	3,799
CWS		60	110	97	96	109	87	99	103	89	93	98	88	72	1,129	
<b>Total</b>		<b>284</b>	<b>413</b>	<b>458</b>	<b>341</b>	<b>418</b>	<b>424</b>	<b>464</b>	<b>479</b>	<b>418</b>	<b>471</b>	<b>423</b>	<b>335</b>	<b>317</b>	<b>4,928</b>	
MONMOUTH	Monmouth North	CPS	142	156	169	141	142	153	158	181	156	164	152	129	119	1,843
		CWS	41	45	49	32	50	30	50	47	40	43	39	37	33	503
		<b>Total</b>	<b>183</b>	<b>201</b>	<b>218</b>	<b>173</b>	<b>192</b>	<b>183</b>	<b>208</b>	<b>228</b>	<b>196</b>	<b>207</b>	<b>191</b>	<b>166</b>	<b>152</b>	<b>2,346</b>
	Monmouth South	CPS	119	134	153	129	118	109	122	171	146	128	125	108	111	1,562
		CWS	32	40	42	44	44	33	43	41	32	43	30	27	38	451
		<b>Total</b>	<b>151</b>	<b>174</b>	<b>195</b>	<b>173</b>	<b>162</b>	<b>142</b>	<b>165</b>	<b>212</b>	<b>178</b>	<b>171</b>	<b>155</b>	<b>135</b>	<b>149</b>	<b>2,013</b>
	County Totals	CPS	261	290	322	270	260	262	280	352	302	292	277	237	230	3,405
		CWS	73	85	91	76	94	63	93	88	72	86	69	64	71	954
		<b>Total</b>	<b>334</b>	<b>375</b>	<b>413</b>	<b>346</b>	<b>354</b>	<b>325</b>	<b>373</b>	<b>440</b>	<b>374</b>	<b>378</b>	<b>346</b>	<b>301</b>	<b>301</b>	<b>4,359</b>
	MORRIS	Morris East	CPS	53	87	80	69	62	70	70	80	84	74	74	61	59
CWS			25	19	24	28	25	30	21	28	21	23	22	27	20	293
<b>Total</b>			<b>78</b>	<b>106</b>	<b>104</b>	<b>97</b>	<b>87</b>	<b>100</b>	<b>91</b>	<b>108</b>	<b>105</b>	<b>97</b>	<b>96</b>	<b>88</b>	<b>79</b>	<b>1,157</b>
Morris West		CPS	87	85	108	91	67	101	83	84	70	102	92	69	74	1,039
		CWS	30	32	25	39	29	36	16	32	33	47	45	29	22	393
		<b>Total</b>	<b>117</b>	<b>117</b>	<b>133</b>	<b>130</b>	<b>96</b>	<b>137</b>	<b>99</b>	<b>116</b>	<b>103</b>	<b>149</b>	<b>137</b>	<b>98</b>	<b>96</b>	<b>1,432</b>
County Totals		CPS	140	172	188	160	129	171	153	164	154	176	166	130	133	1,903
		CWS	55	51	49	67	54	66	37	60	54	70	67	56	42	686
		<b>Total</b>	<b>195</b>	<b>223</b>	<b>237</b>	<b>227</b>	<b>183</b>	<b>237</b>	<b>190</b>	<b>224</b>	<b>208</b>	<b>246</b>	<b>233</b>	<b>186</b>	<b>175</b>	<b>2,589</b>
OCEAN		Ocean North	CPS	110	139	132	147	126	113	144	132	149	144	145	120	119
	CWS		35	36	46	42	39	32	36	54	45	52	38	34	39	489
	<b>Total</b>		<b>145</b>	<b>175</b>	<b>178</b>	<b>189</b>	<b>165</b>	<b>145</b>	<b>180</b>	<b>186</b>	<b>194</b>	<b>196</b>	<b>183</b>	<b>154</b>	<b>158</b>	<b>2,090</b>
	Ocean South	CPS	141	160	226	161	168	178	144	171	161	172	167	178	171	2,027
		CWS	30	49	52	37	48	51	40	41	47	50	38	44	40	527
		<b>Total</b>	<b>171</b>	<b>209</b>	<b>278</b>	<b>198</b>	<b>216</b>	<b>229</b>	<b>184</b>	<b>212</b>	<b>208</b>	<b>222</b>	<b>205</b>	<b>222</b>	<b>211</b>	<b>2,554</b>
	County Totals	CPS	251	299	358	308	294	291	288	303	310	316	312	298	290	3,628
		CWS	65	85	98	79	87	83	76	95	92	102	76	78	79	1,016
		<b>Total</b>	<b>316</b>	<b>384</b>	<b>456</b>	<b>387</b>	<b>381</b>	<b>374</b>	<b>364</b>	<b>398</b>	<b>402</b>	<b>418</b>	<b>388</b>	<b>376</b>	<b>369</b>	<b>4,644</b>
	PASSAIC	Passaic Central	CPS	112	140	182	161	179	132	149	161	143	221	152	118	133
CWS			34	53	53	53	59	44	45	77	63	67	58	52	55	658
<b>Total</b>			<b>146</b>	<b>193</b>	<b>235</b>	<b>214</b>	<b>238</b>	<b>176</b>	<b>194</b>	<b>238</b>	<b>206</b>	<b>288</b>	<b>210</b>	<b>170</b>	<b>188</b>	<b>2,508</b>
Passaic North		CPS	113	153	141	119	140	128	148	138	137	190	151	116	123	1,674
		CWS	40	38	51	49	39	57	45	67	46	56	51	31	34	570
		<b>Total</b>	<b>153</b>	<b>191</b>	<b>192</b>	<b>168</b>	<b>179</b>	<b>185</b>	<b>193</b>	<b>205</b>	<b>183</b>	<b>246</b>	<b>202</b>	<b>147</b>	<b>157</b>	<b>2,244</b>
County Totals		CPS	225	293	323	280	319	260	297	299	280	411	303	234	256	3,524
		CWS	74	91	104	102	98	101	90	144	109	123	109	83	89	1,228
		<b>Total</b>	<b>299</b>	<b>384</b>	<b>427</b>	<b>382</b>	<b>417</b>	<b>361</b>	<b>387</b>	<b>443</b>	<b>389</b>	<b>534</b>	<b>412</b>	<b>317</b>	<b>345</b>	<b>4,752</b>
SALEM		Salem	CPS	69	82	80	41	52	64	47	52	84	78	66	51	35
	CWS		13	19	16	9	14	23	13	19	12	27	15	17	18	197
	<b>Total</b>		<b>82</b>	<b>101</b>	<b>96</b>	<b>50</b>	<b>66</b>	<b>87</b>	<b>60</b>	<b>71</b>	<b>96</b>	<b>105</b>	<b>81</b>	<b>68</b>	<b>53</b>	<b>963</b>
	County Totals	CPS	69	82	80	41	52	64	47	52	84	78	66	51	35	766
		CWS	13	19	16	9	14	23	13	19	12	27	15	17	18	197
		<b>Total</b>	<b>82</b>	<b>101</b>	<b>96</b>	<b>50</b>	<b>66</b>	<b>87</b>	<b>60</b>	<b>71</b>	<b>96</b>	<b>105</b>	<b>81</b>	<b>68</b>	<b>53</b>	<b>963</b>
SOMERSET	Somerset	CPS	93	110	116	95	98	100	101	111	117	131	122	126	88	1,320
		CWS	26	29	36	39	34	26	30	42	37	47	41	32	40	419
		<b>Total</b>	<b>119</b>	<b>139</b>	<b>152</b>	<b>134</b>	<b>132</b>	<b>126</b>	<b>131</b>	<b>153</b>	<b>154</b>	<b>178</b>	<b>163</b>	<b>158</b>	<b>128</b>	<b>1,739</b>
	County Totals	CPS	93	110	116	95	98	100	101	111	117	131	122	126	88	1,320
		CWS	26	29	36	39	34	26	30	42	37	47	41	32	40	419
		<b>Total</b>	<b>119</b>	<b>139</b>	<b>152</b>	<b>134</b>	<b>132</b>	<b>126</b>	<b>131</b>	<b>153</b>	<b>154</b>	<b>178</b>	<b>163</b>	<b>158</b>	<b>128</b>	<b>1,739</b>

Data in this report is preliminary and may differ from any final report. This report is produced to ensure continuous quality improvement throughout DCF.



**Table 5: Monthly Count of CPS Reports and CWS Referrals Assigned to CP&P Local Offices**

County	Local Office	Type of Referral														Total	
			Aug 2014	Sep 2014	Oct 2014	Nov 2014	Dec 2014	Jan 2015	Feb 2015	Mar 2015	Apr 2015	May 2015	Jun 2015	Jul 2015	August 2015		
SUSSEX	Sussex	CPS	55	59	60	71	70	66	64	80	84	74	77	86	71	846	
		CWS	20	28	24	25	21	20	21	29	20	23	35	17	13	283	
		<b>Total</b>	<b>75</b>	<b>87</b>	<b>84</b>	<b>96</b>	<b>91</b>	<b>86</b>	<b>85</b>	<b>109</b>	<b>104</b>	<b>97</b>	<b>112</b>	<b>103</b>	<b>84</b>	<b>1,129</b>	
	County Totals	CPS	55	59	60	71	70	66	64	80	84	74	77	86	71	846	
		CWS	20	28	24	25	21	20	21	29	20	23	35	17	13	283	
		<b>Total</b>	<b>75</b>	<b>87</b>	<b>84</b>	<b>96</b>	<b>91</b>	<b>86</b>	<b>85</b>	<b>109</b>	<b>104</b>	<b>97</b>	<b>112</b>	<b>103</b>	<b>84</b>	<b>1,129</b>	
UNION	Union Central	CPS	36	63	94	81	67	91	75	86	81	85	83	56	52	898	
		CWS	20	21	37	17	15	21	19	30	21	19	20	25	26	265	
		<b>Total</b>	<b>56</b>	<b>84</b>	<b>131</b>	<b>98</b>	<b>82</b>	<b>112</b>	<b>94</b>	<b>116</b>	<b>102</b>	<b>104</b>	<b>103</b>	<b>81</b>	<b>78</b>	<b>1,163</b>	
	Union East	CPS	49	69	94	83	82	72	73	92	85	69	80	51	49	899	
		CWS	26	28	26	28	27	34	24	43	27	33	32	8	23	336	
		<b>Total</b>	<b>75</b>	<b>97</b>	<b>120</b>	<b>111</b>	<b>109</b>	<b>106</b>	<b>97</b>	<b>135</b>	<b>112</b>	<b>102</b>	<b>112</b>	<b>59</b>	<b>72</b>	<b>1,235</b>	
	Union West	CPS	58	83	78	80	69	75	66	81	64	71	62	59	50	846	
		CWS	15	22	25	22	28	29	21	28	29	22	28	29	15	298	
		<b>Total</b>	<b>73</b>	<b>105</b>	<b>103</b>	<b>102</b>	<b>97</b>	<b>104</b>	<b>87</b>	<b>109</b>	<b>93</b>	<b>93</b>	<b>90</b>	<b>88</b>	<b>65</b>	<b>1,144</b>	
	County Totals	CPS	143	215	266	244	218	238	214	259	230	225	225	166	151	2,643	
		CWS	61	71	88	67	70	84	64	101	77	74	80	62	64	899	
		<b>Total</b>	<b>204</b>	<b>286</b>	<b>354</b>	<b>311</b>	<b>288</b>	<b>322</b>	<b>278</b>	<b>360</b>	<b>307</b>	<b>299</b>	<b>305</b>	<b>228</b>	<b>215</b>	<b>3,542</b>	
	WARREN	Warren	CPS	54	72	96	64	74	68	87	66	82	84	78	71	71	896
CWS			19	21	17	23	28	29	32	26	19	33	24	18	23	289	
<b>Total</b>			<b>73</b>	<b>93</b>	<b>113</b>	<b>87</b>	<b>102</b>	<b>97</b>	<b>119</b>	<b>92</b>	<b>101</b>	<b>117</b>	<b>102</b>	<b>89</b>	<b>94</b>	<b>1,185</b>	
County Totals		CPS	54	72	96	64	74	68	87	66	82	84	78	71	71	896	
		CWS	19	21	17	23	28	29	32	26	19	33	24	18	23	289	
		<b>Total</b>	<b>73</b>	<b>93</b>	<b>113</b>	<b>87</b>	<b>102</b>	<b>97</b>	<b>119</b>	<b>92</b>	<b>101</b>	<b>117</b>	<b>102</b>	<b>89</b>	<b>94</b>	<b>1,185</b>	
<b>County CPS Referral Total</b>		CPS	<b>3,406</b>	<b>4,387</b>	<b>5,122</b>	<b>3,973</b>	<b>4,164</b>	<b>4,252</b>	<b>4,250</b>	<b>4,849</b>	<b>4,614</b>	<b>5,060</b>	<b>4,508</b>	<b>3,842</b>	<b>3,714</b>	<b>52,427</b>	
<b>County CWS Referral Total</b>		CWS	<b>1,157</b>	<b>1,413</b>	<b>1,490</b>	<b>1,373</b>	<b>1,402</b>	<b>1,337</b>	<b>1,290</b>	<b>1,536</b>	<b>1,341</b>	<b>1,511</b>	<b>1,385</b>	<b>1,223</b>	<b>1,220</b>	<b>16,458</b>	
<b>County Referral Total</b>		<b>Total</b>	<b>4,563</b>	<b>5,800</b>	<b>6,612</b>	<b>5,346</b>	<b>5,566</b>	<b>5,589</b>	<b>5,540</b>	<b>6,385</b>	<b>5,955</b>	<b>6,571</b>	<b>5,893</b>	<b>5,065</b>	<b>4,934</b>	<b>68,885</b>	
Central Region IAIU		CPS	40	55	70	54	61	48	50	50	51	54	54	63	41	650	
		CWS	0	0	0	0	0	0	0	0	0	0	0	0	0	0	0
		<b>Total</b>	<b>40</b>	<b>55</b>	<b>70</b>	<b>54</b>	<b>61</b>	<b>48</b>	<b>50</b>	<b>50</b>	<b>51</b>	<b>54</b>	<b>54</b>	<b>54</b>	<b>63</b>	<b>41</b>	<b>650</b>
Metro Region IAIU		CPS	25	47	70	45	49	53	59	67	54	70	66	24	30	629	
		CWS	1	0	1	0	0	0	0	0	0	0	0	0	0	0	2
		<b>Total</b>	<b>26</b>	<b>47</b>	<b>71</b>	<b>45</b>	<b>49</b>	<b>53</b>	<b>59</b>	<b>67</b>	<b>54</b>	<b>70</b>	<b>66</b>	<b>24</b>	<b>30</b>	<b>631</b>	
Northern Region IAIU		CPS	41	58	80	47	67	62	61	73	70	80	65	56	43	760	
		CWS	0	0	0	0	0	0	0	0	0	0	0	0	0	0	0
		<b>Total</b>	<b>41</b>	<b>58</b>	<b>80</b>	<b>47</b>	<b>67</b>	<b>62</b>	<b>61</b>	<b>73</b>	<b>70</b>	<b>80</b>	<b>65</b>	<b>56</b>	<b>43</b>	<b>760</b>	
Southern Region IAIU		CPS	52	64	85	59	89	60	68	68	78	97	88	61	59	869	
		CWS	0	0	0	0	0	0	0	0	0	0	0	0	0	0	0
		<b>Total</b>	<b>52</b>	<b>64</b>	<b>85</b>	<b>59</b>	<b>89</b>	<b>60</b>	<b>68</b>	<b>68</b>	<b>78</b>	<b>97</b>	<b>88</b>	<b>61</b>	<b>59</b>	<b>869</b>	
<b>IAIU CPS Subtotal</b>		CPS	<b>158</b>	<b>224</b>	<b>305</b>	<b>205</b>	<b>266</b>	<b>223</b>	<b>238</b>	<b>258</b>	<b>253</b>	<b>301</b>	<b>273</b>	<b>204</b>	<b>173</b>	<b>2,908</b>	
<b>IAIU CWS Subtotal</b>		CWS	<b>1</b>	<b>1</b>	<b>0</b>	<b>0</b>	<b>0</b>	<b>0</b>	<b>0</b>	<b>0</b>	<b>0</b>	<b>0</b>	<b>0</b>	<b>0</b>	<b>0</b>	<b>2</b>	
<b>IAIU Subtotal</b>		<b>Total</b>	<b>159</b>	<b>225</b>	<b>305</b>	<b>205</b>	<b>266</b>	<b>223</b>	<b>238</b>	<b>258</b>	<b>253</b>	<b>301</b>	<b>273</b>	<b>204</b>	<b>173</b>	<b>2,910</b>	
<b>County and IAIU CPS Subtotal</b>		CPS	<b>3,564</b>	<b>4,611</b>	<b>5,427</b>	<b>4,178</b>	<b>4,430</b>	<b>4,475</b>	<b>4,488</b>	<b>5,107</b>	<b>4,867</b>	<b>5,361</b>	<b>4,781</b>	<b>4,046</b>	<b>3,887</b>	<b>55,335</b>	
<b>County and IAIU CWS Subtotal</b>		CWS	<b>1,158</b>	<b>1,414</b>	<b>1,490</b>	<b>1,373</b>	<b>1,402</b>	<b>1,337</b>	<b>1,290</b>	<b>1,536</b>	<b>1,341</b>	<b>1,511</b>	<b>1,385</b>	<b>1,223</b>	<b>1,220</b>	<b>16,460</b>	
<b>Unable to Determine<sup>(1)</sup></b>		<b>Total</b>	<b>129</b>	<b>141</b>	<b>174</b>	<b>117</b>	<b>123</b>	<b>127</b>	<b>138</b>	<b>118</b>	<b>141</b>	<b>144</b>	<b>153</b>	<b>142</b>	<b>124</b>	<b>1,647</b>	
<b>Other Offices</b>		<b>Total</b>	<b>0</b>	<b>0</b>	<b>4</b>	<b>2</b>	<b>1</b>	<b>1</b>	<b>3</b>	<b>6</b>	<b>2</b>	<b>2</b>	<b>4</b>	<b>2</b>	<b>3</b>	<b>27</b>	
<b>Grand Total</b>		<b>Total</b>	<b>4,851</b>	<b>6,166</b>	<b>7,095</b>	<b>5,670</b>	<b>5,956</b>	<b>5,940</b>	<b>5,919</b>	<b>6,767</b>	<b>6,351</b>	<b>7,018</b>	<b>6,323</b>	<b>5,413</b>	<b>5,234</b>	<b>73,469</b>	

<sup>(1)</sup>CPS Reports or CWS Referrals not assigned to an office through the Assignment Designee, but were assigned to an office for an assessment or investigation.