



Child Protection and Permanency

Monthly Screening and Investigation Report February 2024

Christine Norbut Beyer, MSW
Commissioner



NEW JERSEY DEPARTMENT OF
CHILDREN AND FAMILIES

Table of Contents

Table 1: NJ State Central Registry Activity: Monthly Child Abuse and Neglect Hotline Calls, Intakes and Assignments to Child Protection & Permanency (CP&P) Offices

Chart 1: CP&P Annual Trends in Child Protection Services (CPS) Reports and Child Welfare Services (CWS) Referrals

Table 2: Assignments to CP&P Offices: CPS Reports and CWS Referrals

Table 3: Source of CPS Reports and CWS Referrals

Table 4: Monthly Count of CPS Reports and CWS Referrals Assigned to Counties

Table 5: Monthly Count of CPS Reports and CWS Referrals Assigned to CP&P Local Offices



Table 1: NJ State Central Registry Activity: Monthly Child Abuse and Neglect Hotline Calls, Intakes and Assignments to CP&P Offices^{1,2,7}

2022-2023	Hotline Call Activity				Intakes Recorded in NJ SPIRIT ^{6,8}														Assignments to CP&P Offices				
	Total Calls to SCR ³	Abandon Calls ⁴	Average Time to Answer (seconds)	Resulting NJS Intakes ⁵	CPS Reports		CWS Referrals		No Action Required (NAR)		Related Information (RI)		Information & Referral (I&R)		Information Only (IO)		Unusual Incident (UIRS)		CPS Reports		CWS Referrals		Total
					n	%	n	%	n	%	n	%	n	%	n	%	n	%	n	%	n	%	
February 2023	13,385	1,497	162	13,401	5,141	38.4%	891	6.6%	143	1.1%	2,923	21.8%	2,820	21.0%	1,473	11.0%	10	0.1%	5,141	85.2%	891	14.8%	6,032
March 2023	15,364	1,371	112	15,750	6,064	38.5%	1,119	7.1%	191	1.2%	3,177	20.2%	3,377	21.4%	1,817	11.5%	5	0.0%	6,064	84.4%	1,121	15.6%	7,185
April 2023	12,569	866	73	13,291	5,001	37.6%	870	6.5%	197	1.5%	3,068	23.1%	2,423	18.2%	1,728	13.0%	4	0.0%	5,001	85.2%	870	14.8%	5,871
May 2023	14,992	1,368	112	15,567	6,074	39.0%	1,053	6.8%	167	1.1%	3,347	21.5%	2,998	19.3%	1,921	12.3%	7	0.0%	6,074	85.2%	1,053	14.8%	7,127
June 2023	12,861	1,069	115	13,488	4,999	37.1%	955	7.1%	155	1.1%	3,075	22.8%	2,522	18.7%	1,778	13.2%	4	0.0%	4,999	84.0%	955	16.0%	5,954
July 2023	11,377	732	90	12,196	4,576	37.5%	834	6.8%	201	1.6%	2,828	23.2%	1,996	16.4%	1,758	14.4%	3	0.0%	4,576	84.6%	834	15.4%	5,410
August 2023	11,208	536	62	12,127	4,484	37.0%	978	8.1%	229	1.9%	2,656	21.9%	2,081	17.2%	1,692	14.0%	7	0.0%	4,484	82.0%	981	18.0%	5,465
September 2023	12,809	612	49	13,859	5,034	36.3%	1,000	7.2%	199	1.4%	3,166	22.8%	2,720	19.6%	1,739	12.5%	1	0.0%	5,034	83.4%	1,000	16.6%	6,034
October 2023	14,337	619	45	15,546	5,837	37.5%	1,131	7.3%	215	1.4%	3,454	22.2%	2,974	19.1%	1,935	12.4%	0	0.0%	5,837	83.8%	1,131	16.2%	6,968
November 2023	13,338	704	50	14,269	5,195	36.4%	934	6.5%	158	1.1%	3,214	22.5%	2,469	17.3%	2,297	16.1%	2	0.0%	5,195	84.8%	934	15.2%	6,129
December 2023	12,144	705	80	12,968	4,913	37.9%	967	7.5%	136	1.0%	2,939	22.7%	2,438	18.8%	1,572	12.1%	3	0.0%	4,913	83.6%	967	16.4%	5,880
January 2024	13,611	959	83	14,437	5,268	36.5%	1,108	7.7%	210	1.5%	3,339	23.1%	2,809	19.5%	1,703	11.8%	0	0.0%	5,268	82.6%	1,108	17.4%	6,376
February 2024	13,854	1,086	100	14,452	5,260	36.4%	1,082	7.5%	158	1.1%	3,241	22.4%	3,044	21.1%	1,665	11.5%	2	0.0%	5,257	82.9%	1,082	17.1%	6,339
<i>Averages</i>	13,219	933		13,950	5,219	37.4%	994	7.1%	181	1.3%	3,110	22.3%	2,667	19.1%	1,775	12.7%	4	0.0%	5,219	84.0%	994	16.0%	6,213
Overall Totals	171,849	12,124		181,351	67,846	37.4%	12,922	7.1%	2,359	1.3%	40,427	22.3%	34,671	19.1%	23,078	12.7%	48	0.0%	67,843	84.0%	12,927	16.0%	80,770

¹Comes from three distinct sources: (1) the Automatic Call Distribution (ACD) phone system; which keeps a count of the number of calls and call routing; (2) Monthly NJSpirit Intakes; which record decision making on calls received by hotline screeners, and (3) NJSpirit

²The number of Intakes, CPS Reports, and CWS Referrals are based on an extract from NJSpirit.

Data extracted by the Office of Research, Evaluation, and Reporting on **March 08, 2024** includes all Intakes, CPS Reports, and CWS Referrals received from **February 01, 2024 through February 29, 2024**.

³The number calls received through the ACD System that were directed to a screener from any call-in phone number.

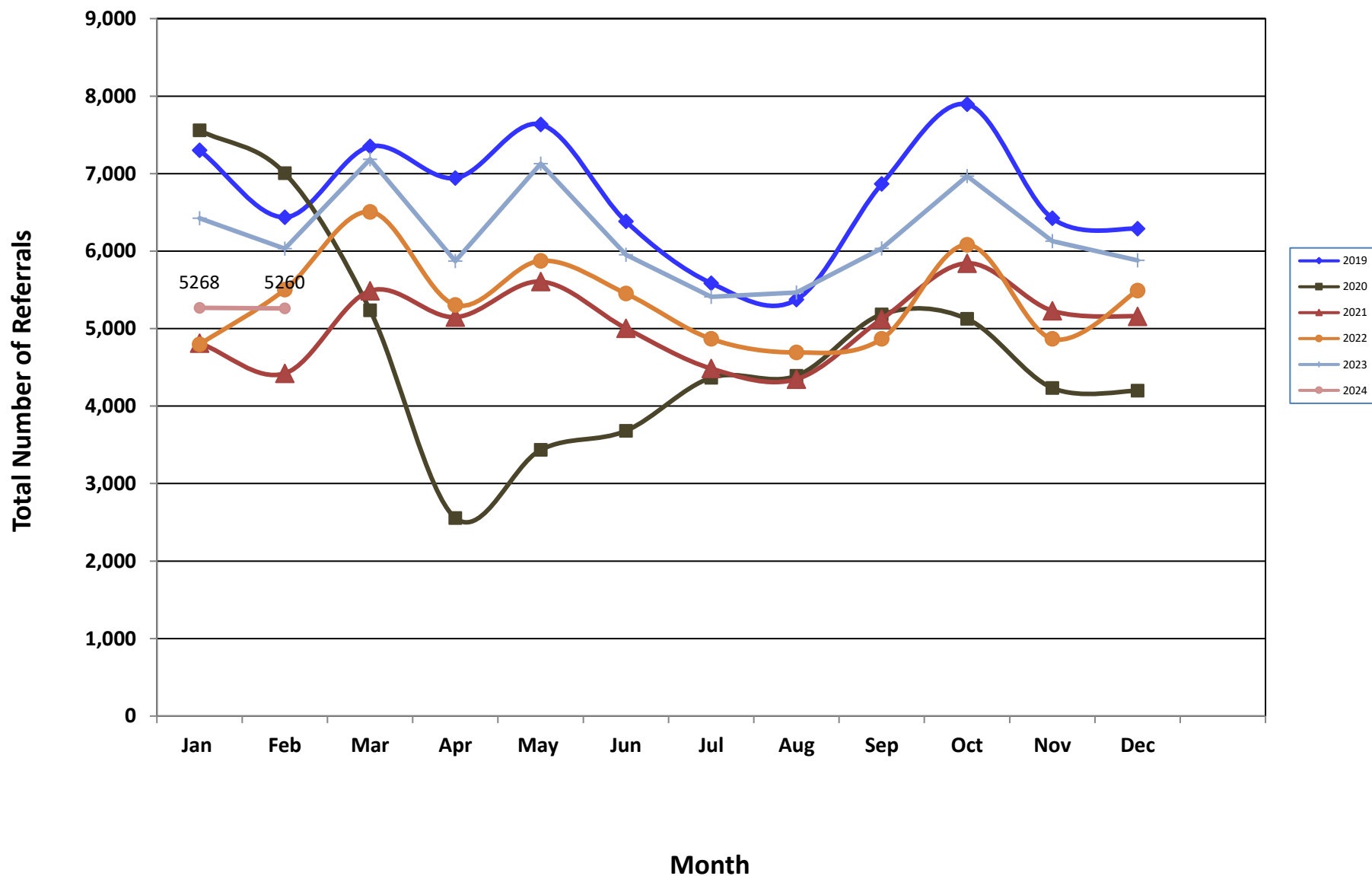
⁴The number of calls received through the ACD System that are abandoned either while waiting in queue or while ringing.

⁵The number of Intakes entered in NJSpirit from the number of calls received.

⁶The number of Intakes recorded in NJSpirit, by type of Intake. There is not a one-to-one relationship between an ACD call and an Intake; multiple calls to State Central Registry (SCR) may result in a single Intake, or one call may result in multiple Intakes.

⁷Intake: The process of documenting: a report of alleged abuse or neglect of a child (CPS); a request for services on behalf of a child, or a referral of a child for services (CWS); a call in which the caller provides additional or clarifying information about a current service

CP&P Annual Trends in CPS Reports and CWS Referrals



Data in this report is preliminary and may differ from any final report. This report is produced to ensure continuous quality improvement throughout DCF.

Table 2: Assignments to CP&P Offices: CPS Reports and CWS Referrals¹

Intake Date ³		CPS Reports ²	CWS Referrals ²	Total Assignments ²
2018	Jan 2018	5,276	1,784	7,060
	Feb 2018	4,933	1,644	6,577
	Mar 2018	5,212	1,727	6,939
	Apr 2018	5,275	1,601	6,876
	May 2018	5,920	1,836	7,756
	Jun 2018	4,948	1,615	6,563
	Jul 2018	4,011	1,308	5,319
	Aug 2018	4,102	1,408	5,510
	Sep 2018	4,748	1,634	6,382
	Oct 2018	5,790	2,011	7,801
	Nov 2018	4,973	1,620	6,593
	Dec 2018	4,891	1,527	6,418
	Total	60,079	19,715	79,794
2019	Jan 2019	5,443	1,858	7,301
	Feb 2019	4,811	1,628	6,439
	Mar 2019	5,677	1,824	7,501
	Apr 2019	5,313	1,630	6,943
	May 2019	5,853	1,781	7,634
	Jun 2019	4,874	1,509	6,383
	Jul 2019	4,277	1,309	5,586
	Aug 2019	4,068	1,306	5,374
	Sep 2019	5,315	1,551	6,866
	Oct 2019	5,968	1,926	7,894
	Nov 2019	4,991	1,432	6,423
	Dec 2019	4,855	1,434	6,289
	Total	61,445	19,188	80,633
2020	Jan 2020	5,715	1,842	7,557
	Feb 2020	5,380	1,624	7,004
	Mar 2020	4,172	1,065	5,237
	Apr 2020	2,149	407	2,556
	May 2020	2,897	537	3,434
	Jun 2020	3,045	636	3,681
	Jul 2020	3,628	738	4,366
	Aug 2020	3,569	822	4,391
	Sep 2020	4,153	1,030	5,183
	Oct 2020	4,257	868	5,125
	Nov 2020	3,564	670	4,234
	Dec 2020	3,517	681	4,198
	Total	46,046	10,920	56,966

Table 2: Assignments to CP&P Offices: CPS Reports and CWS Referrals¹

Intake Date ³		CPS Reports ²	CWS Referrals ²	Total Assignments ²
2021	Jan 2021	4,018	794	4,812
	Feb 2021	3,767	655	4,422
	Mar 2021	4,657	830	5,487
	Apr 2021	4,398	750	5,148
	May 2021	4,870	736	5,606
	Jun 2021	4,412	592	5,004
	Jul 2021	3,914	570	4,484
	Aug 2021	3,866	482	4,348
	Sep 2021	4,559	564	5,123
	Oct 2021	5,213	630	5,843
	Nov 2021	4,689	541	5,230
	Dec 2021	4,601	557	5,158
	Total	52,964	7,701	60,665
2022	Jan 2022	4,274	523	4,797
	Feb 2022	4,867	635	5,502
	Mar 2022	5,780	727	6,507
	Apr 2022	4,669	636	5,305
	May 2022	5,228	647	5,875
	Jun 2022	4,854	598	5,452
	Jul 2022	4,277	590	4,867
	Aug 2022	4,103	589	4,692
	Sep 2022	4,810	680	5,490
	Oct 2022	5,356	725	6,081
	Nov 2022	4,852	762	5,614
	Dec 2022	4,760	731	5,491
	Total	57,830	7,843	65,673
2023	Jan 2023	5,461	962	6,423
	Feb 2023	5,141	891	6,032
	Mar 2023	6,064	1,121	7,185
	Apr 2023	5,001	870	5,871
	May 2023	6,074	1,053	7,127
	Jun 2023	4,999	955	5,954
	Jul 2023	4,576	834	5,410
	Aug 2023	4,484	981	5,465
	Sep 2023	5,034	1,000	6,034
	Oct 2023	5,837	1,131	6,968
	Nov 2023	5,195	934	6,129
	Dec 2023	4,913	967	5,880
	Total	62,779	11,699	74,478
	Jan 2024	5,268	1,108	6,376
	Feb 2024	5,260	1,082	6,342
	Mar 2024			
	Apr 2024			

Data in this report is preliminary and may differ from any final report. This report is produced to ensure continuous quality improvement throughout DCF.

2024	May 2024			
	Jun 2024			
	Jul 2024			
	Aug 2024			
	Sep 2024			
	Oct 2024			
	Nov 2024			
	Dec 2024			
	Total	10,528	2,190	12,718
Grand Total		351,671	77,066	418,209

¹Source of Data: NJ SPIRIT

²A CPS Report or a CWS Referral may include multiple children in a family, with one or more allegation or request for services. In these cases, each CPS Report or CWS Referral is counted once - the CPS Report or the CWS Referral is the unit of analysis rather than the child.

³Prior to January 2014, the number of CPS Reports and CWS Referrals was based on the type of assignment of the CPS Report or CWS Referral. Beginning in January 2014, the number of CPS Reports and CWS Referrals is based on the number of CPS Reports and CWS Referrals received.



Table 3: Source of CPS Reports and CWS Referrals

	Source	Feb 2023	Mar 2023	Apr 2023	May 2023	Jun 2023	Jul 2023	Aug 2023	Sep 2023	Oct 2023	Nov 2023	Dec 2023	Jan 2024	Feb 2024		13 Month Total	
CPS Reports and CWS Referrals	School Staff	1,776	2,267	1,242	1,923	885	246	136	1,203	1,990	1,596	1,494	1,704	1,837	29%	18,299	23%
	Healthcare Provider	865	970	893	916	910	884	940	793	868	785	806	907	858	14%	11,395	14%
	Law Enforcement	1,391	1,548	1,566	1,820	1,782	1,928	1,775	1,737	1,744	1,573	1,654	1,602	1,598	25%	21,718	27%
	Government Agency	273	309	261	316	310	294	392	343	295	305	284	316	282	4%	3,980	5%
	Parent	351	442	439	460	459	435	540	488	485	447	399	428	402	6%	5,775	7%
	Relative/Friend/Neighbor	267	338	331	413	376	377	410	343	348	300	344	296	308	5%	4,451	6%
	Anonymous	435	529	435	544	476	452	431	471	530	440	458	394	423	7%	6,018	7%
	CP&P	60	76	57	64	67	62	68	69	59	54	67	57	56	1%	816	1%
	Court/Legal	121	172	114	145	140	116	144	109	120	99	121	90	114	2%	1,605	2%
	Community Group/Individual	209	184	171	187	218	229	233	180	199	189	167	144	169	3%	2,479	3%
	Facility Staff (incl Correctional Facility)	38	51	65	71	56	59	67	49	49	45	59	47	47	1%	703	1%
	Child (Self)	30	31	31	42	36	28	33	37	38	38	20	18	24	0%	406	1%
	Other	190	240	246	208	223	271	275	182	222	232	167	183	202	3%	2,841	4%
	Daycare/Babysitter	26	28	20	18	16	29	21	30	21	26	16	14	22	0%	287	0%
Total	6,032	7,185	5,871	7,127	5,954	5,410	5,465	6,034	6,968	6,129	6,056	6,200	6,342		80,773		

Data in this report is preliminary and may differ from any final report. This report is produced to ensure continuous quality improvement throughout DCF.



Table 4: Monthly Count of CPS Reports and CWS Referrals Assigned to Counties

County														Average Number of Assignments Last 13 Months	Numerical Difference
	Feb 2023	Mar 2023	Apr 2023	May 2023	Jun 2023	Jul 2023	Aug 2023	Sep 2023	Oct 2023	Nov 2023	Dec 2023	Jan 2024	Feb 2024		
Atlantic	222	289	255	296	258	265	232	258	333	273	263	247	262	266	15
Bergen	398	438	321	418	357	305	312	339	430	400	374	455	360	377	-95
Burlington	300	347	301	340	285	273	305	310	374	333	282	288	300	311	12
Camden	481	579	483	556	502	449	463	487	535	513	449	513	493	500	-20
Cape May	67	78	73	92	71	61	64	71	71	64	71	63	63	70	0
Cumberland	171	214	191	226	208	179	208	174	207	211	199	223	207	201	-16
Essex	612	731	568	739	566	530	569	639	692	584	585	644	653	624	9
Gloucester	233	273	225	286	239	232	246	244	298	238	246	242	255	251	13
Hudson	388	513	384	451	386	337	345	406	436	395	336	391	471	403	80
Hunterdon	41	48	37	47	46	60	38	38	53	47	42	44	63	46	19
Mercer	288	335	277	286	249	252	264	261	368	256	306	274	308	286	34
Middlesex	453	561	389	526	420	376	398	436	466	429	434	489	466	449	-23
Monmouth	321	350	294	348	308	307	271	279	362	295	291	350	304	314	-46
Morris	221	232	203	224	219	201	166	219	226	242	202	250	237	219	-13
Ocean	350	484	388	450	400	344	357	402	405	409	378	402	379	396	-23
Passaic	385	435	405	510	425	313	320	422	462	374	383	401	379	401	-22
Salem	65	75	68	81	58	68	58	63	84	65	66	69	83	69	14
Somerset	173	180	146	174	152	116	119	147	176	126	140	148	145	149	-3
Sussex	87	135	90	129	108	100	97	95	104	93	105	105	101	104	-4
Union	369	397	328	404	322	296	292	302	360	343	314	330	349	339	19
Warren	100	105	111	113	89	95	92	94	88	104	87	113	103	100	-10
County Subtotals	5,725	6,799	5,537	6,696	5,668	5,159	5,216	5,686	6,530	5,794	5,553	6,041	5,981	5,876	-60
Central Region IAIU	54	77	64	89	57	49	58	47	82	60	80	71	70	66	-1
Metro Region IAIU	42	57	32	67	43	32	32	58	86	68	61	59	58	53	-1
Northern Region IAIU	36	69	63	81	33	29	20	59	71	50	50	41	59	51	18
Southern Region IAIU	76	72	66	84	62	59	66	79	86	71	69	80	89	74	9
IAIU Subtotals	208	275	225	321	195	169	176	243	325	249	260	251	276	244	25
¹ Unable to Determine	99	109	102	107	89	81	73	105	109	86	62	81	82	91	1
Other Offices	0	2	7	3	2	1	0	0	4	0	5	3	3	2	0
Grand Total	6,032	7,185	5,871	7,127	5,954	5,410	5,465	6,034	6,968	6,129	5,880	6,376	6,342	6,213	-34

¹CPS Reports or CWS Referrals not assigned to an office through the Assignment Designee, but were assigned to an office for an assessment or investigation.

Table 5: Monthly Count of CPS Reports and CWS Referrals Assigned to CP&P Local Offices

County	Local Office	Type of Referral														Total
			Feb 2023	Mar 2023	Apr 2023	May 2023	Jun 2023	Jul 2023	Aug 2023	Sep 2023	Oct 2023	Nov 2023	Dec 2023	Jan 2024	Feb 2024	
ATLANTIC	Atlantic East	CPS	105	114	110	130	105	114	101	125	138	112	99	107	121	1,481
		CWS	22	35	23	26	24	28	27	26	41	33	26	33	25	369
		Total	127	149	133	156	129	142	128	151	179	145	125	140	146	1,850
	Atlantic West	CPS	85	123	100	126	106	102	81	87	126	112	123	84	96	1,351
		CWS	10	17	22	14	23	21	23	20	28	16	15	23	20	252
		Total	95	140	122	140	129	123	104	107	154	128	138	107	116	1,603
	County Totals	CPS	190	237	210	256	211	216	182	212	264	224	222	191	217	2,832
		CWS	32	52	45	40	47	49	50	46	69	49	41	56	45	621
		Total	222	289	255	296	258	265	232	258	333	273	263	247	262	3,453
BERGEN	Bergen Central	CPS	149	153	116	139	144	105	107	120	149	150	129	176	131	1,768
		CWS	21	28	19	24	27	14	15	33	22	29	27	40	28	327
		Total	170	181	135	163	171	119	122	153	171	179	156	216	159	2,095
	Bergen South	CPS	194	215	151	215	166	155	155	166	224	192	174	193	161	2,361
		CWS	34	43	35	40	20	31	35	20	35	29	44	46	40	452
		Total	228	258	186	255	186	186	190	186	259	221	218	239	201	2,813
	County Totals	CPS	343	368	267	354	310	260	262	286	373	342	303	369	292	4,129
		CWS	55	71	54	64	47	45	50	53	57	58	71	86	68	779
		Total	398	439	321	418	357	305	312	339	430	400	374	455	360	4,908
BURLINGTON	Burlington East	CPS	126	142	115	150	109	112	126	116	149	136	108	133	115	1,637
		CWS	22	28	34	20	26	26	19	24	29	30	34	19	28	339
		Total	148	170	149	170	135	138	145	140	178	166	142	152	143	1,976
	Burlington West	CPS	129	146	135	146	124	109	127	134	156	126	110	108	129	1,679
		CWS	23	32	17	24	26	26	33	36	40	41	30	28	28	384
		Total	152	178	152	170	150	135	160	170	196	167	140	136	157	2,063
	County Totals	CPS	255	288	250	296	233	221	253	250	305	262	218	241	244	3,316
		CWS	45	60	51	44	52	52	52	60	69	71	64	47	56	723
		Total	300	348	301	340	285	273	305	310	374	333	282	288	300	4,039
CAMDEN	Camden Central	CPS	107	141	96	123	118	102	112	98	110	106	89	94	105	1,401
		CWS	19	22	26	22	24	22	18	32	28	22	24	29	27	315
		Total	126	163	122	145	142	124	130	130	138	128	113	123	132	1,716
	Camden East	CPS	102	105	106	124	91	87	94	115	111	95	93	96	99	1,318
		CWS	27	19	16	16	19	29	18	25	20	12	31	36	31	299
		Total	129	124	122	140	110	116	112	140	131	107	124	132	130	1,617
	Camden North	CPS	98	118	108	101	110	76	92	95	107	114	98	105	111	1,333
		CWS	25	33	16	17	26	25	29	16	30	27	19	28	23	314
		Total	123	151	124	118	136	101	121	111	137	141	117	133	134	1,647
	Camden South	CPS	92	114	94	122	91	86	83	90	112	114	83	103	85	1,269
		CWS	11	26	21	31	23	22	17	16	17	23	12	22	12	253
		Total	103	140	115	153	114	108	100	106	129	137	95	125	97	1,522
	County Totals	CPS	399	478	404	470	410	351	381	398	440	429	363	398	400	5,321
		CWS	82	100	79	86	92	98	82	89	95	84	86	115	93	1,181
		Total	481	578	483	556	502	449	463	487	535	513	449	513	493	6,502
CAPE MAY	Cape May	CPS	55	65	57	73	52	55	53	56	62	56	59	53	48	744
		CWS	12	13	16	19	19	6	11	15	9	8	12	10	15	165
		Total	67	78	73	92	71	61	64	71	71	64	71	63	63	909
	County Totals	CPS	55	65	57	73	52	55	53	56	62	56	59	53	48	744
		Total	67	78	73	92	71	61	64	71	71	64	71	63	63	909
CUMBERLAND	Cumberland East	CPS	62	65	58	78	62	71	85	58	78	72	53	75	68	885
		CWS	15	16	9	18	24	11	14	10	8	10	18	23	19	195
		Total	77	81	67	96	86	82	99	68	86	82	71	98	87	1,080
	Cumberland West	CPS	81	111	103	120	97	83	89	87	98	117	107	107	102	1,302
		CWS	13	22	21	10	26	14	20	19	23	12	21	18	18	237
		Total	94	133	124	130	123	97	109	106	121	129	128	125	120	1,539
	County Totals	CPS	143	176	161	198	159	154	174	145	176	189	160	182	170	2,187
		CWS	28	38	30	28	50	25	34	29	31	22	39	41	37	432
		Total	171	214	191	226	209	179	208	174	207	211	199	223	207	2,619

Table 5: Monthly Count of CPS Reports and CWS Referrals Assigned to CP&P Local Offices

County	Local Office	Type of Referral													Total	
			Feb 2023	Mar 2023	Apr 2023	May 2023	Jun 2023	Jul 2023	Aug 2023	Sep 2023	Oct 2023	Nov 2023	Dec 2023	Jan 2024		Feb 2024
ESSEX	Essex Central	CPS	71	88	68	85	53	63	70	86	78	64	57	82	71	936
		CWS	16	21	10	30	19	9	24	20	20	12	11	23	22	237
		Total	87	109	78	115	72	72	94	106	98	76	68	105	93	1,173
	Essex North	CPS	118	119	94	122	92	69	74	109	124	117	94	107	95	1,334
		CWS	17	16	16	26	24	11	16	24	21	20	11	12	25	239
		Total	135	135	110	148	116	80	90	133	145	137	105	119	120	1,573
	Essex South	CPS	84	105	84	97	84	94	75	77	101	78	83	91	93	1146
		CWS	14	37	24	15	23	11	18	22	26	19	25	20	20	274
		Total	98	142	108	112	107	105	93	99	127	97	108	111	113	1420
	Newark Center City	CPS	71	83	75	95	62	79	81	72	77	85	61	71	73	985
		CWS	13	17	9	26	13	11	22	22	13	18	21	13	23	221
		Total	84	100	84	121	75	90	103	94	90	103	82	84	96	1206
	Newark Northeast	CPS	89	95	91	109	93	85	69	100	103	76	98	101	94	1203
		CWS	18	21	9	23	20	15	18	15	25	16	34	24	23	261
		Total	107	116	100	132	113	100	87	115	128	92	132	125	117	1464
Newark South	CPS	81	114	77	101	74	68	75	73	89	66	76	84	92	1070	
	CWS	20	15	11	10	9	15	27	19	15	13	14	16	22	206	
	Total	101	129	88	111	83	83	102	92	104	79	90	100	114	1276	
County Totals	CPS	514	604	489	609	458	458	444	517	572	486	469	536	518	6674	
	CWS	98	127	79	130	108	72	125	122	120	98	116	108	135	1438	
	Total	612	731	568	739	566	530	569	639	692	584	585	644	653	8112	
GLOUCESTER	Gloucester East	CPS	77	113	84	87	93	79	91	84	117	89	83	98	93	1188
		CWS	12	19	15	16	11	8	13	18	24	20	15	19	24	214
		Total	89	132	99	103	104	87	104	102	141	109	98	117	117	1402
	Gloucester West	CPS	123	121	116	150	114	127	118	117	131	104	122	104	113	1560
		CWS	21	20	10	33	21	18	24	25	26	25	26	21	25	295
		Total	144	141	126	183	135	145	142	142	157	129	148	125	138	1855
	County Totals	CPS	200	234	200	237	207	206	209	201	248	193	205	202	206	2748
Total		233	273	225	286	239	232	246	244	298	238	246	242	255	3257	
HUDSON	Hudson Central	CPS	104	113	105	121	106	71	75	92	98	94	80	79	105	1243
		CWS	19	23	20	22	22	21	26	16	15	20	19	15	25	263
		Total	123	136	125	143	128	92	101	108	113	114	99	94	130	1506
	Hudson North	CPS	81	100	85	106	77	76	59	87	93	77	78	87	112	1118
		CWS	18	24	13	15	19	12	15	21	20	19	11	26	13	226
		Total	99	124	98	121	96	88	74	108	113	96	89	113	125	1344
	Hudson South	CPS	60	107	55	71	67	72	71	83	76	85	60	75	90	972
		CWS	12	22	5	13	13	20	15	26	28	12	9	17	15	207
		Total	72	129	60	84	80	92	86	109	104	97	69	92	105	1179
	Hudson West	CPS	78	105	79	91	67	58	70	65	86	71	60	75	97	1002
		CWS	16	19	22	12	15	7	14	16	20	17	19	17	14	208
		Total	94	124	101	103	82	65	84	81	106	88	79	92	111	1210
County Totals	CPS	323	425	324	389	317	277	275	327	353	327	278	316	404	4335	
	Total	388	513	384	451	386	337	345	406	436	395	336	391	471	5239	
HUNTERDON	Hunterdon	CPS	36	41	32	41	41	48	35	29	44	44	35	37	51	514
		CWS	5	7	5	6	5	12	3	9	9	3	7	7	12	90
		Total	41	48	37	47	46	60	38	38	53	47	42	44	63	604
	County Totals	CPS	36	41	32	41	41	48	35	29	44	44	35	37	51	514
		Total	41	48	37	47	46	60	38	38	53	47	42	44	63	604
MERCER	Mercer North	CPS	124	119	121	140	116	111	105	126	146	113	129	122	116	1588
		CWS	27	15	27	24	18	17	30	15	27	21	27	26	28	302
		Total	151	134	148	164	134	128	135	141	173	134	156	148	144	1890
	Mercer South	CPS	113	172	108	101	97	112	101	93	154	96	121	108	133	1509
		CWS	23	29	21	21	18	12	28	27	41	26	29	18	31	324
		Total	136	201	129	122	115	124	129	120	195	122	150	126	164	1833
	County Totals	CPS	237	291	229	241	213	223	206	219	300	209	250	230	249	3097
Total		287	335	277	286	249	252	264	261	368	256	306	274	308	3723	

Table 5: Monthly Count of CPS Reports and CWS Referrals Assigned to CP&P Local Offices

County	Local Office	Type of Referral															Total
			Feb 2023	Mar 2023	Apr 2023	May 2023	Jun 2023	Jul 2023	Aug 2023	Sep 2023	Oct 2023	Nov 2023	Dec 2023	Jan 2024	Feb 2024		
MIDDLESEX	Middlesex Central	CPS	135	150	107	134	100	85	90	120	99	107	90	111	120	1448	
		CWS	15	29	14	30	24	22	14	26	26	14	13	16	19	262	
		Total	150	179	121	164	124	107	104	146	125	121	103	127	139	1710	
	Middlesex Coastal	CPS	130	160	117	163	143	121	124	119	129	136	131	148	150	1771	
		CWS	23	24	15	27	14	24	35	24	33	26	25	34	21	325	
		Total	153	184	132	190	157	145	159	143	162	162	156	182	171	2096	
	Middlesex West	CPS	134	165	116	136	116	106	114	124	149	120	152	145	132	1709	
		CWS	17	34	20	36	23	18	21	23	30	26	23	35	24	330	
		Total	151	199	136	172	139	124	135	147	179	146	175	180	156	2039	
County Totals	CPS	399	475	340	433	359	312	328	363	377	363	373	404	402	4928		
	CWS	55	87	49	93	61	64	70	73	89	66	61	85	64	917		
	Total	454	562	389	526	420	376	398	436	466	429	434	489	466	5845		
MONMOUTH	Monmouth North	CPS	160	167	131	173	123	150	121	149	161	142	137	174	153	1941	
		CWS	27	26	24	23	25	29	29	19	33	23	17	26	27	328	
		Total	187	193	155	196	148	179	150	168	194	165	154	200	180	2269	
	Monmouth South	CPS	112	138	114	134	133	114	104	102	131	115	116	126	102	1541	
		CWS	22	19	25	18	27	14	17	9	37	15	21	24	22	270	
		Total	134	157	139	152	160	128	121	111	168	130	137	150	124	1811	
	County Totals	CPS	272	305	245	307	256	264	225	251	292	257	253	300	255	3482	
		CWS	49	45	49	41	52	43	46	28	70	38	38	50	49	598	
		Total	321	350	294	348	308	307	271	279	362	295	291	350	304	4080	
MORRIS	Morris East	CPS	78	83	81	90	88	87	65	100	91	101	89	92	95	1140	
		CWS	16	22	14	10	18	11	8	11	19	13	15	15	14	186	
		Total	94	105	95	100	106	98	73	111	110	114	104	107	109	1326	
	Morris West	CPS	100	104	86	103	101	86	78	86	96	108	85	119	103	1255	
		CWS	27	24	22	21	12	17	15	22	20	20	13	24	25	262	
		Total	127	128	108	124	113	103	93	108	116	128	98	143	128	1517	
	County Totals	CPS	178	187	167	193	189	173	143	186	187	209	174	211	198	2395	
		CWS	43	46	36	31	30	28	23	33	39	33	28	39	39	448	
		Total	221	233	203	224	219	201	166	219	226	242	202	250	237	2843	
OCEAN	Ocean North	CPS	177	220	177	184	184	159	148	192	184	188	162	160	168	2303	
		CWS	23	38	20	40	23	27	29	23	31	24	25	30	25	358	
		Total	200	258	197	224	207	186	177	215	215	212	187	190	193	2661	
	Ocean South	CPS	136	204	160	195	170	136	148	152	166	173	163	172	156	2131	
		CWS	14	22	31	31	23	22	32	35	24	24	28	40	30	356	
		Total	150	226	191	226	193	158	180	187	190	197	191	212	186	2487	
	County Totals	CPS	313	424	337	379	354	295	296	344	350	361	325	332	324	4434	
		CWS	37	60	51	71	46	49	61	58	55	48	53	70	55	714	
		Total	350	484	388	450	400	344	357	402	405	409	378	402	379	5148	
PASSAIC	Passaic Central	CPS	156	180	186	223	198	121	105	168	178	155	158	154	140	2122	
		CWS	26	44	27	41	34	29	35	32	33	34	31	43	30	439	
		Total	182	224	213	264	232	150	140	200	211	189	189	197	170	2561	
	Passaic North	CPS	172	181	165	206	154	136	145	176	214	148	159	165	165	2186	
		CWS	31	30	27	40	39	27	35	46	37	37	35	39	44	467	
		Total	203	211	192	246	193	163	180	222	251	185	194	204	209	2653	
	County Totals	CPS	328	361	351	429	352	257	250	344	392	303	317	319	305	4308	
		CWS	57	74	54	81	73	56	70	78	70	71	66	82	74	906	
		Total	385	435	405	510	425	313	320	422	462	374	383	401	379	5214	
SALEM	Salem	CPS	60	61	55	67	50	53	50	55	72	54	59	58	68	762	
		CWS	5	14	13	14	8	15	8	8	12	11	7	11	15	141	
		Total	65	75	68	81	58	68	58	63	84	65	66	69	83	903	
	County Totals	CPS	60	61	55	67	50	53	50	55	72	54	59	58	68	762	
		CWS	5	14	13	14	8	15	8	8	12	11	7	11	15	141	
		Total	65	75	68	81	58	68	58	63	84	65	66	69	83	903	
SOMERSET	Somerset	CPS	146	151	127	145	133	104	97	124	160	112	120	130	127	1676	
		CWS	27	29	19	29	19	12	22	23	16	14	20	18	18	266	
		Total	173	180	146	174	152	116	119	147	176	126	140	148	145	1942	
	County Totals	CPS	146	151	127	145	133	104	97	124	160	112	120	130	127	1676	
		CWS	27	29	19	29	19	12	22	23	16	14	20	18	18	266	
Total	173	180	146	174	152	116	119	147	176	126	140	148	145	1942			

Table 5: Monthly Count of CPS Reports and CWS Referrals Assigned to CP&P Local Offices

County	Local Office	Type of Referral														Total
			Feb 2023	Mar 2023	Apr 2023	May 2023	Jun 2023	Jul 2023	Aug 2023	Sep 2023	Oct 2023	Nov 2023	Dec 2023	Jan 2024	Feb 2024	
SUSSEX	Sussex	CPS	70	117	71	110	88	93	82	73	88	82	85	80	80	1119
		CWS	17	18	19	19	20	7	15	22	16	11	20	25	21	230
		Total	87	135	90	129	108	100	97	95	104	93	105	105	101	1349
	County Totals	CPS	70	117	71	110	88	93	82	73	88	82	85	80	80	1119
		CWS	17	18	19	19	20	7	15	22	16	11	20	25	21	230
		Total	87	135	90	129	108	100	97	95	104	93	105	105	101	1349
UNION	Union Central	CPS	101	108	92	118	71	71	81	94	97	82	96	73	89	1173
		CWS	20	17	14	19	13	19	13	16	20	11	13	16	20	211
		Total	121	125	106	137	84	90	94	110	117	93	109	89	109	1384
	Union East	CPS	104	109	90	119	102	93	79	85	97	102	84	101	92	1257
		CWS	21	22	10	12	13	9	24	16	17	13	13	15	31	216
		Total	125	131	100	131	115	102	103	101	114	115	97	116	123	1473
	Union West	CPS	107	122	106	115	98	86	84	72	106	120	93	109	100	1318
		CWS	17	19	16	21	25	18	11	19	23	15	15	16	17	232
		Total	124	141	122	136	123	104	95	91	129	135	108	125	117	1550
	County Totals	CPS	312	339	288	352	271	250	244	251	300	304	273	283	281	3748
		CWS	58	58	40	52	51	46	48	51	60	39	41	47	68	659
		Total	370	397	328	404	322	296	292	302	360	343	314	330	349	4407
	WARREN	Warren	CPS	92	84	96	92	82	80	76	86	72	76	74	95	86
CWS			8	22	15	21	7	15	16	8	16	28	13	18	17	204
Total			100	106	111	113	89	95	92	94	88	104	87	113	103	1295
County Totals		CPS	92	84	96	92	82	80	76	86	72	76	74	95	86	1091
		CWS	8	22	15	21	7	15	16	8	16	28	13	18	17	204
		Total	100	106	111	113	89	95	92	94	88	104	87	113	103	1295
County CPS Referral Total		CPS	4,865	5,711	4,700	5,671	4,745	4,350	4,265	4,717	5,427	4,882	4,615	4,967	4,925	63,840
County CWS Referral Total		CWS	861	1,092	837	1,025	924	809	951	969	1,103	912	938	1,074	1,056	12,551
County Referral Total		Total	5,726	6,803	5,537	6,696	5,669	5,159	5,216	5,686	6,530	5,794	5,553	6,041	5,981	76,391
Central Region IAIU	CPS	55	77	64	89	56	49	49	47	82	60	80	70	70	848	
	CWS	0	0	0	0	0	0	0	0	0	0	0	1	0	1	
	Total	55	77	64	89	56	49	49	47	82	60	80	71	70	849	
Metro Region IAIU	CPS	44	57	32	67	43	32	32	58	86	68	61	59	58	697	
	CWS	0	0	0	0	0	0	0	0	0	0	0	0	0	0	
	Total	44	57	32	67	43	32	32	58	86	68	61	59	58	697	
Northern Region IAIU	CPS	39	69	63	81	33	28	28	59	71	50	50	40	59	670	
	CWS	0	0	0	0	0	1	0	0	0	0	0	1	0	2	
	Total	39	69	63	81	33	29	28	59	71	50	50	41	59	672	
Southern Region IAIU	CPS	77	72	66	84	62	59	59	79	86	71	69	80	89	953	
	CWS	0	0	0	0	0	0	0	0	0	0	0	0	0	0	
	Total	77	72	66	84	62	59	59	79	86	71	69	80	89	953	
IAIU CPS Subtotal		CPS	215	275	225	321	194	168	168	243	325	249	260	249	276	3,168
IAIU CWS Subtotal		CWS	0	0	0	0	0	1	0	0	0	0	0	2	0	3
IAIU Subtotal		Total	215	275	225	321	194	169	168	243	325	249	260	251	276	3,171
County and IAIU CPS Subtotal		CPS	5,080	5,986	4,925	5,992	4,939	4,518	4,433	4,960	5,752	5,131	4,875	5,216	5,201	67,008
County and IAIU CWS Subtotal		CWS	861	1,092	837	1,025	924	810	951	969	1,103	912	938	1,076	1,056	12,554
Unable to Determine(1)		Total	89	105	102	107	89	81	81	105	109	86	67	81	82	1,184
Other Offices		Total	2	2	7	3	2	1	0	0	4	0	0	3	3	27
Grand Total		Total	6,032	7,185	5,871	7,127	5,954	5,410	5,465	6,034	6,968	6,129	5,880	6,376	6,342	80,773

⁽¹⁾CPS Reports or CWS Referrals not assigned to an office through the Assignment Designee, but were assigned to an office for an assessment or investigation.