



# State of New Jersey

## DEPARTMENT OF ENVIRONMENTAL PROTECTION

OFFICE OF THE COMMISSIONER

401 East State Street

P.O. Box 402, Mail Code 401-07

Trenton, New Jersey 08625-0420

Tel. (609) 292-2885 • Fax (609) 292-7695

[www.nj.gov/dep](http://www.nj.gov/dep)

**PHILIP D. MURPHY**

*Governor*

**SHEILA Y. OLIVER**

*Lt. Governor*

**SHAWN M. LATOURETTE**

*Commissioner*

### Public Notice of the Suspension of Harvest from Shellfish Beds Dangerous to Health

The Department of Environmental Protection (Department) routinely monitors water quality in shellfish growing areas throughout New Jersey to ensure the wholesomeness of shellfish intended for human consumption. Analysis of water samples indicates that the Shark River no longer meets its current shellfish growing water classification as set forth in the Shellfish Growing Water Classification rules at N.J.A.C. 7:12, [https://www.nj.gov/dep/rules/rules/njac7\\_12.pdf](https://www.nj.gov/dep/rules/rules/njac7_12.pdf).

**TAKE NOTICE**, that pursuant to N.J.A.C. 7:12-1.4(b) and the statutory authority granted the Department at N.J.S.A. 58:24-2 to protect the public health from the risk posed by the consumption of shellfish that may have been subjected to pollution or other conditions that may render the shellfish dangerous to health, I hereby immediately suspend the harvest of shellfish from the following waters, as further described below:

***Shark River (371 acres)***

In accordance with N.J.A.C. 7:12-1.3, the waters in the Shark River are classified as *Restricted*. To be classified as *Restricted*, the bacteriological quality of water samples at every sample station in the growing area shall not exceed the fecal coliform median or geometric mean of 88 colony-forming units (CFU) per 100 milliliters (ml) and the estimated 90<sup>th</sup> percentile shall not exceed 163 CFU per 100 ml. For more information on shellfish growing water classifications please see the National Shellfish Sanitation Program (NSSP), Guide for the Control of Molluscan Shellfish, 2019 Revision, incorporated by reference at N.J.A.C. 7:12-1.3(a) and available at the U.S. Food and Drug Administration website: <https://www.fda.gov/food/federalstate-food-programs/national-shellfish-sanitation-program-nssp>.

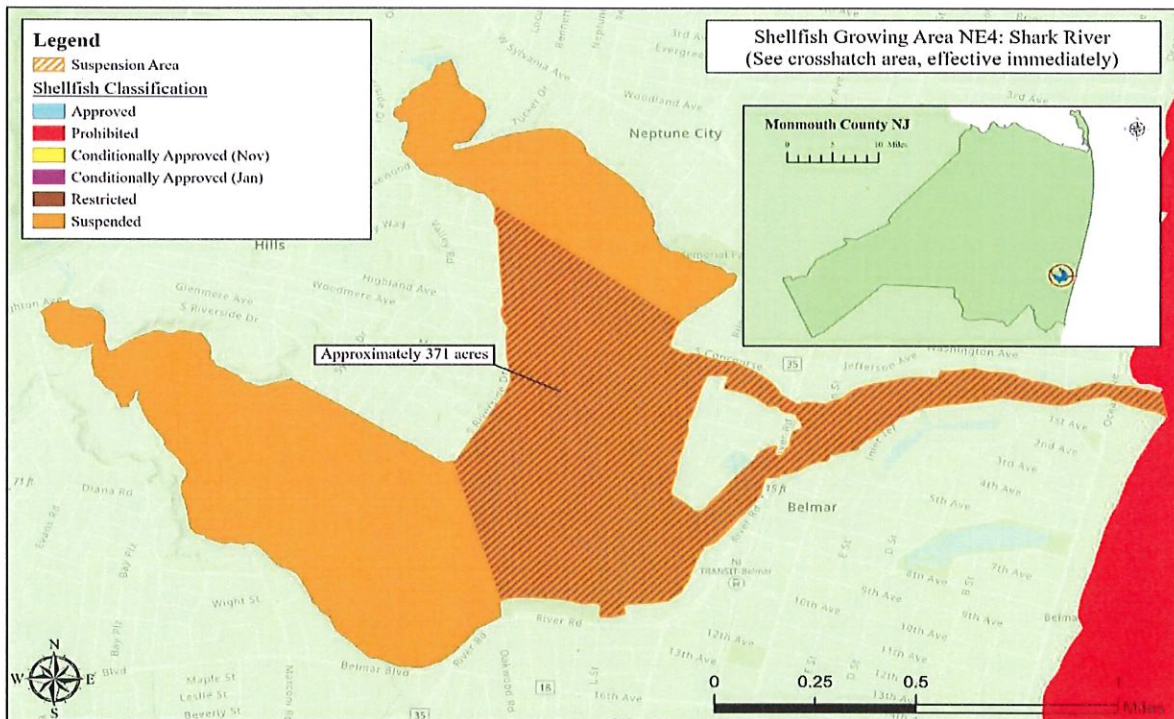
Water sampling data collected by the Department over the past three to four years indicate that the water samples from the waters in the Shark River do not consistently meet the fecal coliform standards for *Restricted* waters. The suspension of harvest shall take effect immediately and continue pending the establishment by rulemaking of the appropriate classification and boundaries of the waters as *Prohibited*, *Restricted*, *Conditionally Restricted*, *Conditionally Approved* or *Approved*, as provided by N.J.A.C. 7:12-1.4(b), or until the Department determines that the area of water subject to the suspension meets the standards for its current classification.

Date: 3/2/2023

Robert Schuster, Chief  
Bureau of Marine Water Monitoring

### Shark River Area (371 acres)

All of the shellfish waters inclusive of an area beginning at a point of coordinates latitude 40.179258 N and longitude 74.038908 W moving across the waterbody towards the shoreline in a north westerly direction to a point of coordinates latitude 40.184865 N and longitude - 74.041166 W moving in a northern direction along the shoreline to a point of coordinates latitude 40.195109 N and longitude 74.039127 W moving across the waterbody in an easterly direction to a point of coordinates latitude 40.190397 N and longitude 74.030383 W moving along the shoreline in an easterly directly to a point of coordinates latitude 40.187412 N and longitude 74.007912 moving south to a point of coordinates latitude 40.186448 and longitude 74.00728 W moving along the shoreline in a westerly direction to the point of origin and terminating.



## Shellfish Growing Area NE4 Suspension

Downgrade: Restricted to Prohibited



NJ Department of Environmental Protection  
Water Monitoring, Standards, and Pesticide Control  
Bureau of Marine Water Monitoring

