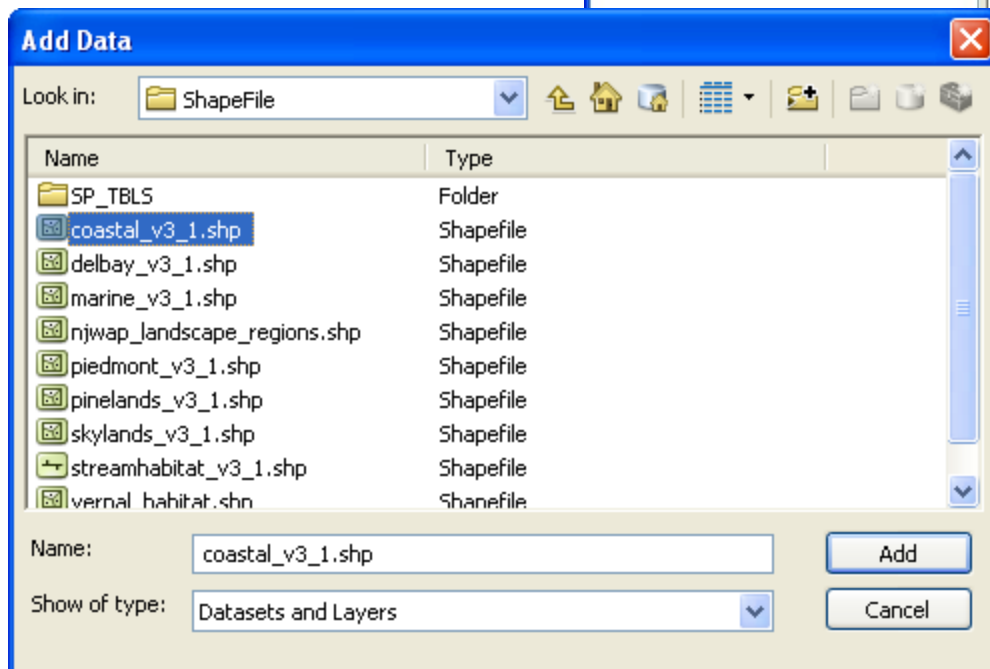
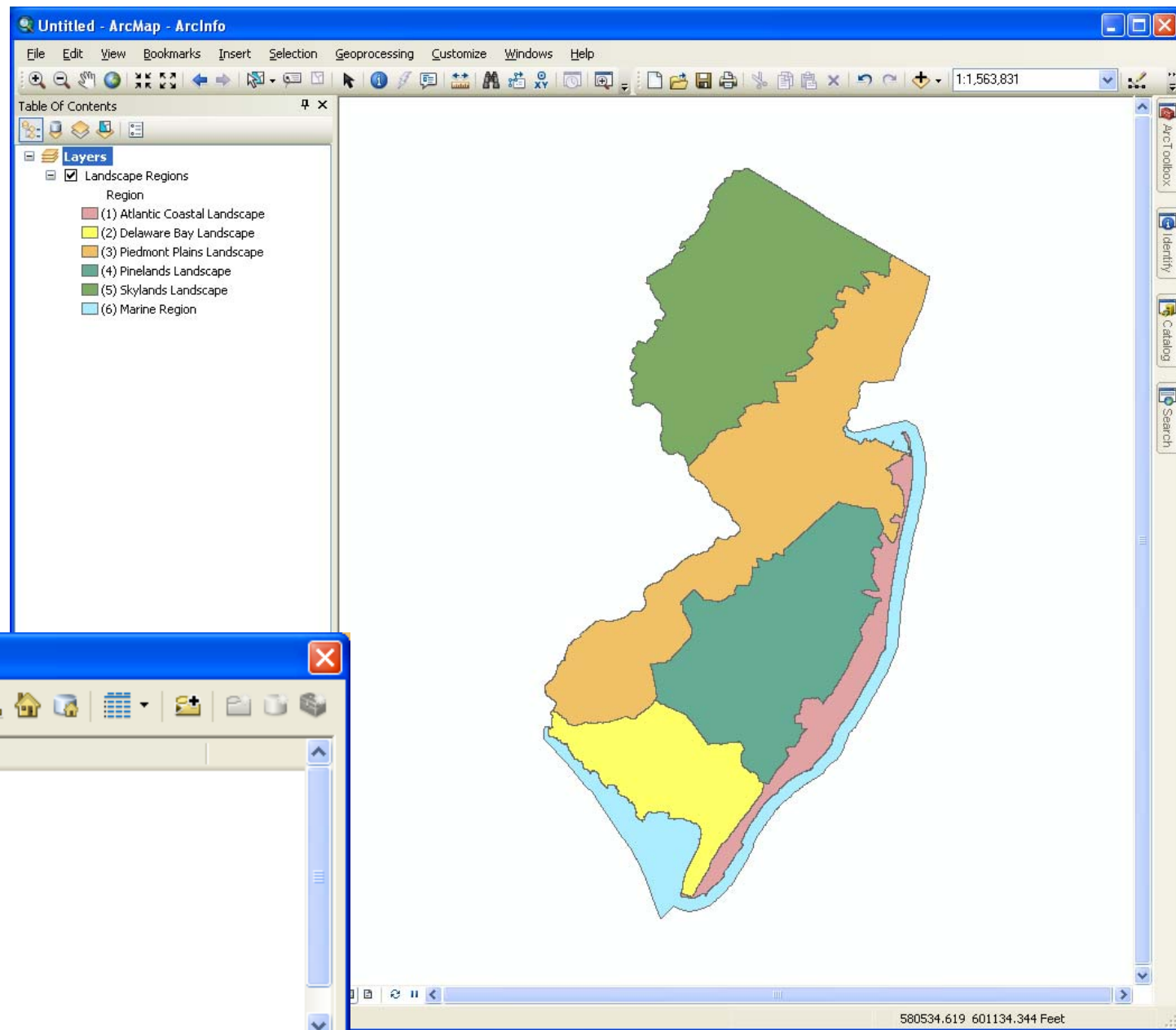


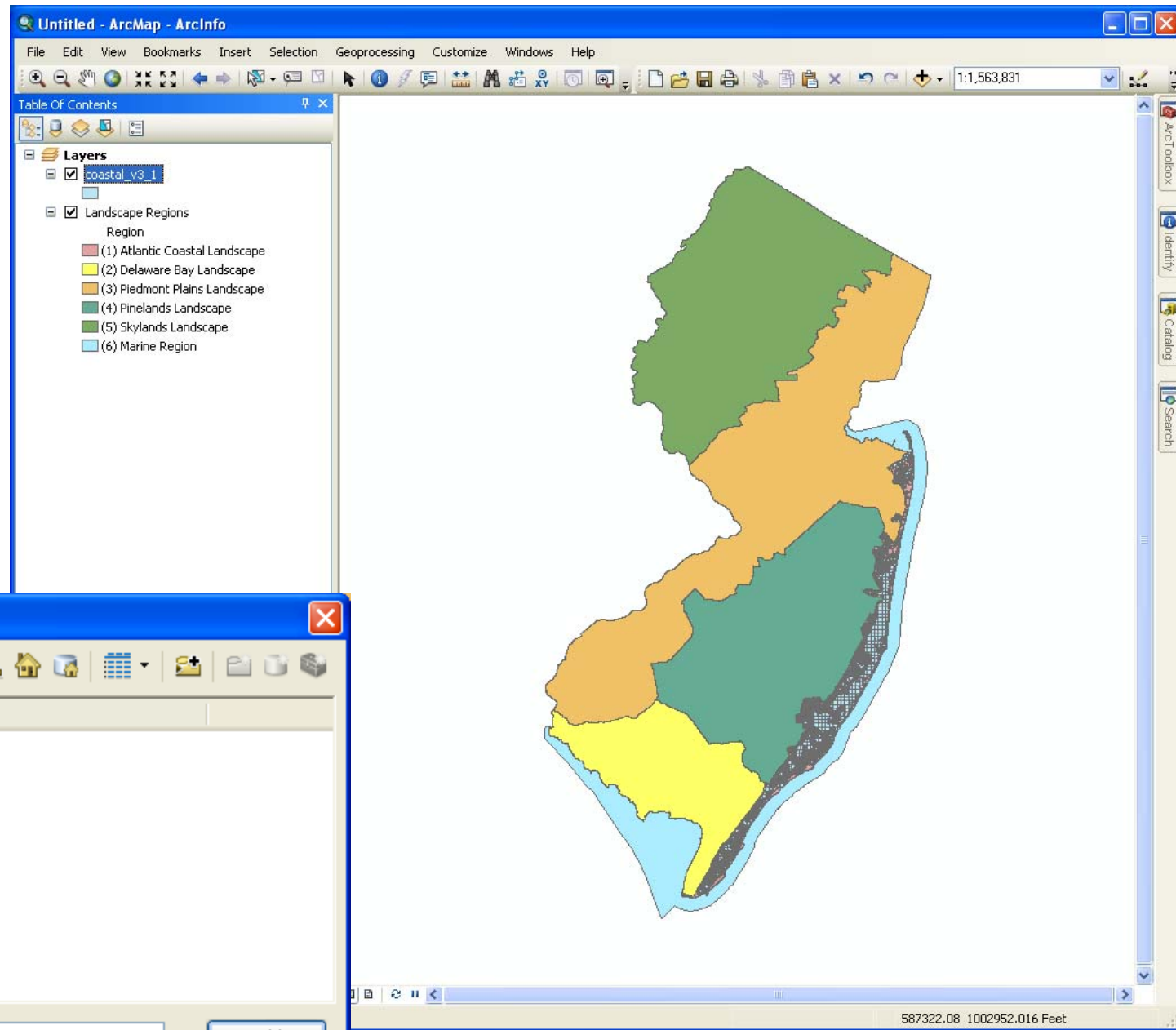
Landscape Project

How to relate the species based
habitat shapefiles to the species
look up tables

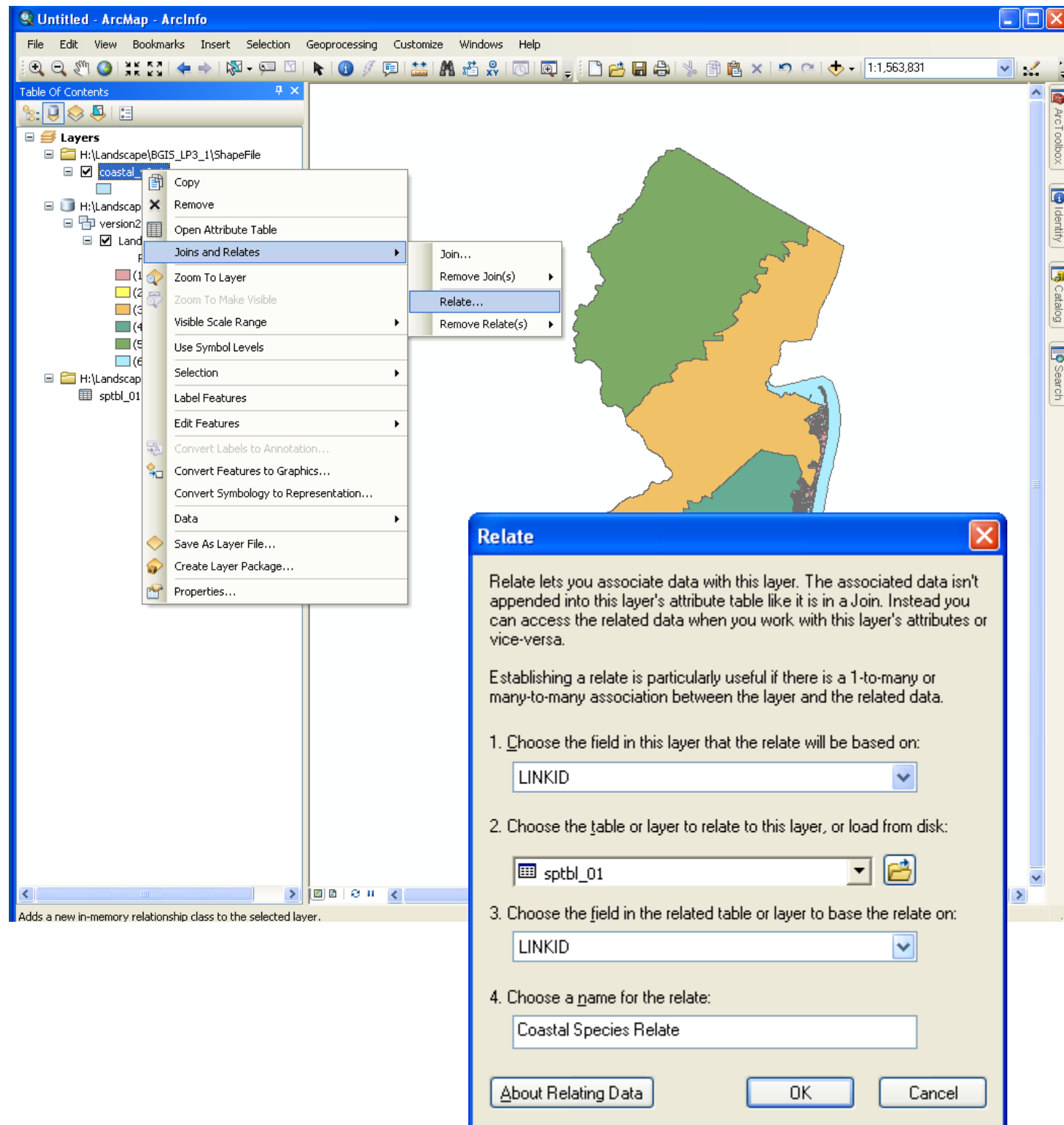
- Open a blank ArcGIS project
- Click the **Add Data** button
- Navigate to where you have the Landscape shapefiles stored on your computer
- Add a species habitat shapefile



- Click the **Add Data** button
- Navigate to where you have the Landscape species tables stored on your computer
- Add the matching Landscape Project species table



- Right click on the shapefile
 - Click on **Joins and Relates**
 - Click on **Relate....**
- Relate Dialog window will appear
- Make the following choices
 1. Choose the field in this layer that the relate will be based on
 - **LINKID**
 2. Choose the table or layer to relate this layer, or load from disk
 - **Sptbl_01** (for this example)
 3. Choose the field in the related table or layer to base the relate on
 - **LINKID**
 4. Choose a name for the relate
 - **Coastal Species Relate**



- Click on the **Identify** tool and then click on a Landscape polygon
- The identify window will display with the polygon attributes
- Click the **+** sign to expand the related species table to see which species are present in the polygon

The screenshot shows the ArcMap interface with the 'Identify' tool active. The 'Layers' panel on the left shows a map of New Jersey with several landscape regions. The 'Identify' window is open, displaying a list of species found in a selected polygon. The species list includes:

- Osprey
- Black Skimmer
- Northeastern Beach Tiger Beetle
- Common Tern
- Least Tern
- Common Tern
- Migratory Shorebird Concentration Site
- Least Tern
- Black Skimmer
- Piping Plover
- Semipalmated Sandpiper
- Red Knot
- American Oystercatcher
- Sanderling

Below the species list, the 'Location' is given as 629,081.628 598,793.433 Feet. A table of attributes for the selected feature is shown below:

| Field | Value |
|------------|---|
| FID | 22862 |
| Shape | Polygon |
| OBJECTID | 22863 |
| LINKID | 01_28714 |
| LNDR | 5 |
| LU07 | 7100 |
| LABEL07 | BEACHES |
| TYPE07 | BARREN LAND |
| RIPARIAN | No |
| FOR_CORE | No |
| GRASS_MIN | No |
| REGION | Coastal |
| VERSION | Version 3.1 |
| CONTACT | Federally listed species present, contact USFWS (http://www.fws.gov/northeast/njfieldoffice/) |
| Acres | 59.253053 |
| Hectares | 23.978956 |
| Shape_Leng | 19773.945091 |
| Shape_Area | 2581063.00572 |

Identified 1 feature