

# Regulatory Update

By Bruce Halgren, Supervising Biologist

The good news is: fisheries management works. Stocks of important recreational species such as summer flounder (fluke), striped bass, black sea bass and scup (porgy) have increased significantly in recent years. This has led to increases in the target harvest quotas for the recreational fisheries for summer flounder, black sea bass and scup for the 2002 fishing year.

The bad news is: these increases in fish available for the recreational angler has continued to result in some fish harvests which exceed the target quotas of the fishery management plans. Even to bring back the recreational harvest to the increased target quotas, there must be some adjustments in the management measures for 2002, as identified below.

### Summer Flounder (Fluke)

The coastal recreational target quota for summer flounder has been increased by 36 percent, from 7.16 million pounds to 9.72 million pounds. Even with this increase, however, New Jersey has to reduce its harvest by 16.7 percent in 2002. To achieve this, the size limit will increase from 16 inches to 16-1/2 inches, the possession limit will remain at 8 fish and the season will increase slightly this year to May 18 through September 24.

There will be no difference in the management measures for state and federal waters this year.

### Black Sea Bass

The target quota for the recreational black sea bass fishery has been increased by 9 percent, from 3.148 million pounds to 3.43 million pounds. The size limit has been increased from 11 inches to 11-1/2 inches, the possession limit will remain at 25 fish and the closed season from March 1 through May 9 that was in effect last year will be eliminated to allow the fishery to be open for the entire year.

### Scup (Porgy)

The target quota for the recreational scup fishery is being increased from 1.76 million pounds to 2.71 million pounds. This represents an available harvest over 1-1/2 times greater than last year. As with summer flounder, however, even with this significant increase anglers will have to reduce their take on a coastwide basis. The size limit will increase from 9" to 10", the possession limit remains at 50 fish, and the season is reduced to July 1–October 31.

### Other changes:

There is currently a closed season for striped bass in the Delaware River and its tributaries from the Route 1 bridge in Trenton, downstream to and including the Salem River and its tributaries from April 1 through March 31 of each year to protect spawning stripers. To further protect these spawning fish from hook and release mortality in the defined closure area and period, the Division has proposed that only non-offset circle hooks be used while fishing with any natural bait. This restriction would only apply to hooks of size two and larger which are frequently used for striped bass. Anglers should be aware this rule is anticipated to become effective in late spring or early summer.

The Division has also proposed increasing the minimum size limit and implementing a maximum size limit for lobsters in the commercial fishery. The recreational lobster fishery, whether by pot or hand capture, will be exempted from these changes in the size limits for lobster. However, to allow enforcement of the new commercial size limits at the market place, the sale of lobsters harvested by hand will be prohibited. The sale of lobsters by recreational pots is already prohibited.

## Wild Places & Open Spaces

The NJ Division of Fish and Wildlife is proud to offer the publication *Wild Places & Open Spaces—A Wildlife Enthusiasts Guide to Finding and Using Public Open Space in the Garden State*. The publication, designed similar to a road map, offers the outdoors-person a wealth of information on locating and exploring New Jersey's open spaces in a compact and easy-to-read format.

Originally developed as an updated version of the familiar Guide to Wildlife Management Areas, the publication not only contains valuable information on Division Wildlife Management Areas and the variety of wildlife present, but includes state parks, forests and much more! Showcasing a full-color map of New Jersey, more than 700,000 acres of public open space are highlighted with an accompanying wildlife activity grid.

**Order yours today by using the form at right.**



Send check or money order for \$4.00 made payable to:  
 NJ Division of Fish and Wildlife  
 Wild Places Map  
 P.O. Box 400  
 Trenton, NJ 08625-0400  
 Attn: Carol Nash

Name \_\_\_\_\_

Address \_\_\_\_\_

City \_\_\_\_\_

State \_\_\_\_\_ Zip Code \_\_\_\_\_

Quantity Ordered \_\_\_\_\_  
 (price per map: \$4 includes shipping)

Total Enclosed \$ \_\_\_\_\_

# 2002 Summary of Marine Fish & Shellfish Regulations

*This is not the full law. Consult the Division of Fish and Wildlife for further details. All persons are reminded that the statutes, code and regulations are the legal authorities. Red text in regulations indicates a change for this year.*

## Resource Information

Anyone who takes fisheries resources may be required to provide information on the species, number, weight or other information pertinent to management of resources.

## Methods of Fishing

No person shall take, catch, kill or attempt to take, catch or kill any fish within the marine waters of the State by any means except in the manner commonly known as angling with hand line or rod and line unless specifically provided for by statute or regulation.

## Wanton Waste Prohibited

Fish of any species which are purposely killed shall become part of the angler's daily possession limit and shall not be returned to the water from which they were taken. This does not apply to fish which are released alive and subsequently die.

## Spear Fishing

Spear fishing can be conducted by means of a spear, harpoon or other missile while completely submerged in the marine waters of the state for any species, except lobster.

Persons who fish with a spear for species with size limits are reminded that it is their responsibility to ensure the fish meets the minimum size limits before being killed or injured.

## Prohibited Species

It is illegal to take, possess, land, purchase, or sell any of the following species:

Atlantic Sturgeon  
Basking Shark  
Bigeye Sand Tiger Shark  
Sand Tiger Shark  
Shortnosed Sturgeon  
Whale Shark  
White Shark

## Sea Turtles and Marine Mammals

It is illegal to intentionally molest, kill or possess sea turtles or marine mammals, or to possess any part thereof.

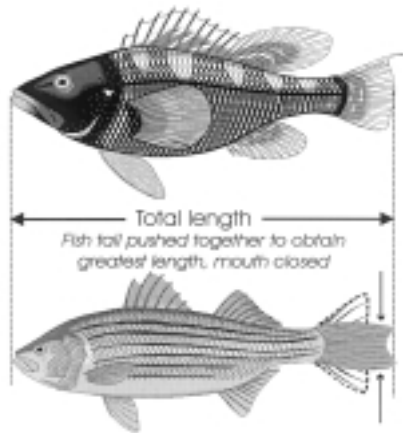
## Finfish

### Filleting

The filleting at sea of all fish with a size limit is prohibited. Party boats may fillet fish at sea if they obtain a Special Fillet Permit. Applications may be obtained from the Marine Fisheries Administration.

### Black drum

The minimum size limit for black drum is 16



inches in total length and the daily possession limit is 3 fish. There is no closed season for black drum.

### Black Sea Bass

The minimum size limit for black sea bass is **11-1/2** inches measured along the midline from the snout to the end of the central portion of the tail, **not to include the tail filaments. There is no closed season for black sea bass.**

### Bluefish

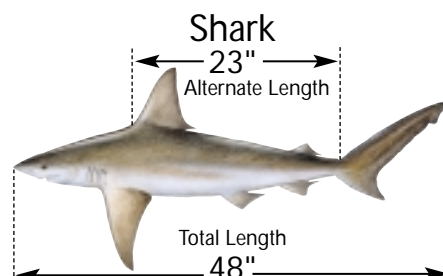
The possession limit for bluefish is 15 fish. Bluefish taken with hook and line may be sold **only** from June 16 through August 7 **and only** if the harvester is in possession of a valid commercial bluefish permit issued for his or her vessel by the National Marine Fisheries Service (978-281-9370). Any harvester in possession of a valid commercial bluefish permit may possess more than 15 bluefish per day but only during the commercial season of June 16 through August 7.

### Shark

The minimum size limit for any species of shark, *except dogfish* (see note below) is 48 inches total length.

#### Sharks—Prohibited Species

basking shark      sand tiger shark  
whale shark      bigeye sand tiger shark  
white shark



The fins may not be removed from a shark, except after fishing has ceased and such shark has been landed. A shark may be eviscerated and the head and tail removed prior to landing, provided that the alternate length as measured from the origin of the first dorsal fin to the pre-caudal pit (located just forward of the origin of the upper lobe of the tail fin) is not less than 23 inches in length. The possession limit is 2 shark per vessel.

**Note:** To differentiate sharks from dogfish—the smooth dogfish has flat, tiny teeth; the spiny dogfish has strong, dorsal spines, shorter than, and in front of, the dorsal fins. Neither is present in sharks.

### Striped Bass

(includes Hybrid Striped Bass)

The possession limit for striped bass / hybrid striped bass is two fish. One fish must be greater than or equal to 24 inches to less than 28" (slot fish) while the other fish must be 28 inches or greater. It does not matter which fish is harvested first. Anglers participating in the Striped Bass Program Bonus Program (see next page) may possess an additional striped bass at 28 inches or greater. Anglers do not need to harvest a slot fish prior to taking a Bonus fish.

It is illegal to take, catch or kill any striped bass from or in any marine waters of this state, by means of a net of any description, or by any methods other than angling with a hook and line or by spear fishing.

It is illegal to possess any striped bass, or parts of a striped bass from which the head and / or tail has been removed (other than while in preparation or being served as food), which is less than the legal minimum size.

Harvest and possession of striped bass from federal waters (outside 3 miles) is prohibited.

Sale of striped bass in N.J. is prohibited.

### Closed seasons

No person may take, attempt to take, or have in possession any striped bass from the following closed waters:

**Jan. 1–Feb. 28**—All waters except the Atlantic Ocean from 0-3 miles offshore.

**April 1–May 31**—Delaware River & Bay and their tributaries from the upstream side of the U.S. Route 1 bridge downstream to and including the Salem River and its tributaries.

\* The use of non-offset circle hooks will be required to reduce striped bass bycatch mortality while fishing with natural bait during the striped bass spawning area closure within the Delaware River and its tributaries. This restriction will not apply to hook sizes smaller than size two. \*

(continued on page 16)

# 2002 Summary of Marine Fish & Shellfish Regulations

(continued from page 15)

## Striped Bass Bonus Fish Program

Fishermen may possess one (1) additional striped bass per day under the Striped Bass Bonus Fish Program subject to the following:

1. The fisherman must apply for and receive a fish possession card (See application, page 22) in advance of attempting to take a bonus fish.
2. The minimum size limit for a striped bass taken under the bonus program is 28 inches.
3. Fisherman must comply with all aspects of the regulations. A guide to these regulations is provided with the fish possession cards.
4. Two fish possession cards are issued to each applicant. Only one card is good per day. Cards are valid only during the year issued. **The gray card is only good for the 2002 season.**
5. Participants wishing to continue in the program in future years can do so by mailing the fishing logs enclosed with their cards.

Additional cards will be provided upon checking fish at one of the 65 designated check stations or by mailing the completed card to the Division. For more information regarding this program call 609-748-2020.

## Summer Flounder (Fluke)

The possession and minimum size limit for summer flounder is 8 fish at 16-1/2 inches and an open season from May 18 to September 24.

## Tautog (BlackFish)

The minimum size limit for tautog is 14 inches. There is a 1 fish possession limit during the period of June 1 through October 9 and a 10 fish possession limit during the period of October 10 through May 31.

## Weakfish (Gray & Spotted Seatrout)

The possession and minimum size limit for weakfish is 14 fish, at least 14 inches in length.

## Winter Flounder

The minimum size limit for winter flounder is 11 inches. For winter flounder the open seasons are March 1–May 31 and September 15–December 31. There is no possession limit.

## Additional Marine Fishing Regulations

See pages 18–20 for the clip out reference charts.

## Bait Fish

No license is required for the taking of bait-fish for personal use with the following gear:

1. Dip nets 24" in diameter or less for the taking of herring for live bait.
2. Bait seines 50 feet long or less.
3. Cast nets 20 feet in diameter or less.
4. Lift or umbrella nets four feet square or less.
5. Not more than five (5) killipots.
6. Not more than two miniature fykes or pots for the taking of eels for bait.

Fish taken in this manner may not be sold or used for barter unless a commercial bait net license is in possession.

No person shall take more than 35 alewife or blueback herring in aggregate per day by hook and line or the above listed gear.

No person shall take or attempt to take fish by any means from the Deal Lake flume, Lake Takanasse spillway or Wreck Pond spillway on any Monday, Wednesday or Friday during the months of April and May.

## Crustaceans

### American Lobster

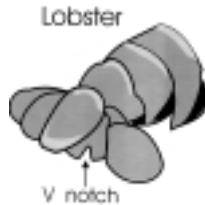
The legal possession size of whole lobsters, measured from the rear of the eye socket along a line parallel to the center line of the body shell to the rear of the body shell, shall be not less than 3-1/4 inches. \*\* Lobster parts may not be possessed at sea or landed.

The possession limit is 6 lobsters per person. No person shall possess any lobster with eggs attached or from which eggs have been removed or any female lobster with a v-notched tail, as illustrated above.

The use of spears, gigs, gaffs or other penetrating devices as a method of capture for lobsters is prohibited. A license is required for the use of pots or traps for the capture of lobsters.

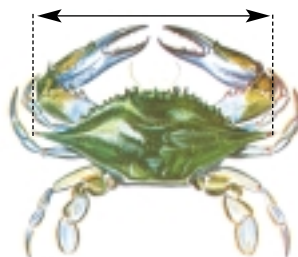
\* Lobsters taken recreationally may not be sold or offered for sale.\*

\*\* The lobster size limit may be increased to 3 5/16 inches this summer. Contact the Bureau of Marine Fisheries at 609-748-2020.



### Crabs

1. Crabs may be taken recreationally with hand lines, manually operated collapsible traps or scoop nets without a license. A non-commercial crab pot license is required for the use of not more than two (2) non-collapsible Chesapeake-style crab pots (see illustration on page 22) or two (2) trot lines to harvest crabs. See page 22 for the non-commercial crab pot license application or stop by coastal bait and tackle shops.



2. It is illegal to harvest or possess more than one bushel of crabs per day per person or offer for sale any crabs without having in your possession a valid commercial crabbing license.
3. Minimum size of crabs that may be harvested (measured from point to point of shell) are as follows:
  - a. Peeler or shedder crab—3 inches
  - b. Soft crab—3-1/2 inch
  - c. Hard crab—4-3/4 inches (for sale)
  - d. Hard crab—4-1/2 inches (possession)
4. All female crabs with eggs attached and all undersized crabs shall be returned to the water immediately.
5. Recreational trot lines shall not exceed 150 feet in length with a maximum of 25 baits.
6. All pots and trot lines shall be marked with the identification number of the owner.
7. All crab pots must be tended at least once every 72 hours.
8. No floating line may be used on any crab pot or crab pot buoy.
9. No crab pot shall be placed in any area that would obstruct or impede navigation or in any creek less than 50 feet wide.
10. Only the owner, his agent or a law enforcement officer may raise or remove contents of a legally set fishing device.
11. Crabs taken with a bait seine may be retained for personal use only if the fisherman possesses a bait net license, and may not be bartered or sold unless the fisherman possesses a commercial crab license.
12. No crabs may be harvested from the Newark Bay Complex as described under the section on Health Advisories, pages 30–31.
13. Crab Pot/Trot Line seasons:
 

Delaware Bay and tributaries—

\* April 6 to Dec. 4 \*; all other waters—Mar 15 to Nov 30. The following waters are closed to the use of crab pots and trot lines:

Cumberland Co: Cohansey River and creeks named Back, Cedar, Nantuxent, Fortesque, Oranoken, and Dividing; Cape May Co: West and Bidwell Creeks and the Cape May Canal; Atlantic Co: Hammock Cove (Dry Bay); Ocean Co.: on East shore of Barnegat Bay, that area of Sedge Islands WMA enclosed by a line drawn from the northern bank of Fishing Creek on Island Beach State Park to the northern tip of the Sedge Island (Hensler Island), then south from point to point along the western side of the Sedge Islands WMA and terminating on the most southwestern point of Island Beach State Park.

\*... \* These items contained within asterisks are anticipated to be adopted in the spring of 2002.

(continued on next page)

14. The Division will issue a non-commercial crab dredge license for the harvest of not more than one bushel of crabs during the crab dredge season. Crabs so taken may not be sold or offered for barter. There is a fee of \$15.00 for this non-commercial crab dredge license. Call the Marine Fisheries Administration at 609-748-2040.

**Notice:** All non-collapsible Chesapeake-style crab pots (see illustration on page 22) must be constructed to include a biodegradable panel designed to create an opening to allow crabs and other organisms to escape if the pot is lost or abandoned. All non-collapsible Chesapeake-style crab pots set in any man-made lagoon or any water body less than 150 feet wide must also include a turtle excluder device inside all pot entrance funnels.

**Horseshoe Crabs**

The harvest of horseshoe crabs is prohibited without a permit.

**Mollusks (Shellfish)**

1. All persons must be licensed to participate in the harvest of hard clams, soft clams, surf clams and oysters.
2. It is illegal to harvest clams, oysters and mussels from condemned waters, even for bait purposes. It is also illegal to harvest surf clams from beaches adjacent to water classified as condemned.

Water classification charts are available from license agents, any state shellfish office or Marine Police Station. Charts are updated annually.

3. Shellfish harvesting is prohibited before sunrise, after sunset and on Sundays.
4. Harvesting of clams, oysters and mussels on public grounds is restricted to the use of hand implements.
5. It is illegal to harvest shellfish from leased grounds. These grounds are delineated by stakes or buoys set by the lease holder. Charts of the leases may be examined at the Nacote Creek or Bivalve Shellfish Offices during regular business hours.

**Hard Clams**

1. No person shall harvest more than 150 clams per day unless such person is a holder of a commercial clam license. Only certified shellfish dealers may purchase clams from commercial harvesters. All persons selling clams commercially must tag each container listing date of harvest, name and address of the harvester and the waters from which the shellfish were harvested.
2. A non-resident recreational license is valid only during the months of June, July, August and September.



3. Anyone engaged in any clamming activity with someone holding a commercial clam license must also possess their own commercial clam license.
4. It is illegal to dredge clams. Hand implements are the only legal harvest methods.
5. The minimum size of hard clams that may be harvested is 1-1/2 inches in length. Clams less than 1-1/2 inches in length must be immediately returned to the bottom from which they were taken.
6. It is illegal to harvest shellfish on Sunday except on the seasonal waters of the Navesink and Shrewbury Rivers between November 1 and April 30.

**Oysters**

1. Oysters may be sold only to certified dealers.
2. It is illegal to dredge oysters on public grounds. All harvesting on public grounds is restricted to the use of hand implements.
3. Shells taken in the process of harvesting oysters must be culled from the live oysters and returned immediately to the area from where they were taken.
4. Specific seasons and regulations exist for oyster beds in Great Bay, Delaware Bay, the Mullica, Great Egg Harbor and Tuckahoe rivers. Check with appropriate shellfish offices for detailed regulations.
5. One license covers recreational and commercial oystering.

**Mann's-Shakespeare-Berkley-Cannon-Seeker-Orvis-Teeny-Cortland-Power-Pro-Storm**

**"Your Sporting Goods Destination"**

**Fresh and Saltwater Tackle**

**EPINGER** Knowledgeable Staff & Expert repairs  
*Sporting Goods Company* Hunting, Fishing, Archery, Paintball, Camping, Outdoor and Athletic Clothing, Kayaks, Shoes, Athletic Equipment and All Your Sporting Needs.

**Since 1909** **Plus: Boy Scout uniforms and equipment**  
**Athletic uniforms**  
**Repairs and services**  
**Complete gunsmith shop**

**We Sell NJ & PA Hunting & Fishing Licenses & State & Federal Duck Stamps**

**We Stock Left Handed Reels-Fishing Gear for Men, Women and Children**

**NJ's LARGEST Sporting Goods Store**  
**513 West Union Ave. (P.O. Box 2003) Bound Brook, NJ**  
**Ph: 732 356-0604 Fx: 732 805-9860**

**Hours: M-T-TH-F 9-9, Wed.-Sat. 9-5:30, Sun. 11-5** **AMEX, VISA, MC, DEBIT**

**Shimano-Seaguar-Scott-Penn-Abel-Wulff-Varivas-S.A.-Yo Zuri-Owner-Gamakatsu-Abu-Thompson**

**FREE!**

**15-30lb BERKLEY Big Game Mono**

**Wound on your reel. Up to 400 yards. Limit one per customer. Must have coupon present to redeem.**

**OFFER EXPIRES 8/30/02**

Name \_\_\_\_\_  
 Address \_\_\_\_\_  
 City \_\_\_\_\_ ST \_\_\_\_\_ Zip \_\_\_\_\_

**Tienco-Mustad-Eagle Claw-Fenwick-Jinkai-and more**

**Mega Bait-Tibor-Sage-G. Loomis-Teton-St. Croix-Daiwa-Aftco**

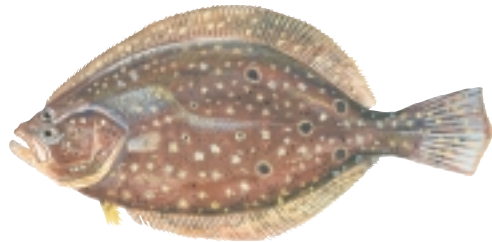
# ATTENTION ANGLERS

## 2002 NJ Minimum Size, Possession Limits & Seasons

Fish are measured from tip of snout to tip of tail (except Black Sea Bass).  
Cleaning or filleting of fish with a minimum size limit while at sea is prohibited.



**Weakfish**  
14 Fish at 14"



**Summer Flounder (Fluke)**  
8 Fish at 16 1/2"  
Open Season 5/18-9/24



**Tautog 14"**  
10 Fish-10/10-5/31 • 1 Fish-6/1-10/9



25 Fish at 11 1/2"  
No Closed Season  
**Black Sea Bass**



**Bluefish**  
15 fish no minimum size

**PROHIBITED SPECIES**  
*It is illegal to take, possess or land any of the following species:*

**BIGEYE SAND TIGER SHARK  
SHORTNOSE STURGEON  
ATLANTIC STURGEON  
SAND TIGER SHARK  
BASKING SHARK  
WHALE SHARK  
WHITE SHARK**

**OTHER SPECIES**

	Possession Limit	Total Length
American Eel . . . . .	50 . . . . .	6"
Cobia . . . . .	2 . . . . .	37"
Cod . . . . .	No Limit . . . . .	21"
Haddock . . . . .	No Limit . . . . .	21"
King Mackerel . . . . .	3 . . . . .	23"
Pollock . . . . .	No Limit . . . . .	19"
River Herring . . . . .	35 . . . . .	No Limit
Lobster . . . . .	6 . . . . .	3 1/4"* (Carapace Length)

\*See page 16

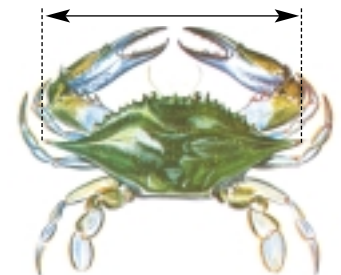


**Striped Bass or Hybrid Striped Bass**  
1 fish at 28"

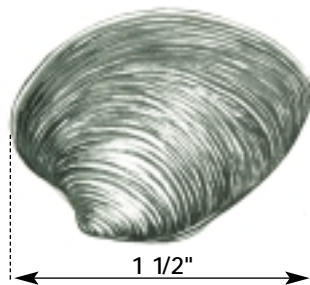
1 fish at 24" or greater, but less than 28"  
Del. River & tribs. (Rt. 1 Bridge); Trenton, to Salem River & tribs. Open 3/1-3/31 & 6/1-12/31  
Atlantic Ocean: (0-3 miles from shore), no closed season; (greater than 3 miles from shore) closed year round  
All other marine waters, open 3/1-12/31



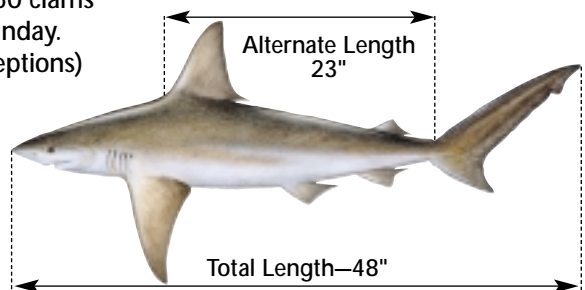
**Winter Flounder**  
11" • Open Seasons: 3/1-5/31; 9/15-12/31



**Blue Crab (point to point)**  
Peeler or Shedder-3"  
Soft-3 1/2" • Hard-4 1/2"  
recreational limit-one bushel



**Hard Clam**  
recreational limit-150 clams  
No harvest on Sunday.  
(See pg. 17 for exceptions)



**Shark**  
2 Fish per vessel

# New Jersey Marine Fish Identification



**Black Drum**  
3 Fish at 16"



**Atlantic Bonito**



**Northern Kingfish**



**Scup (Porgy)**  
50 Fish at 10" • Open Season 7/1–10/31



**White Perch**



**Northern Sea Robin**



**Northern Puffer**



**Spiny Dogfish**



**Red Drum**  
5 Fish at 18" (Only 1 fish over 27")



**Atlantic Mackerel**



**Smooth Dogfish**



**American Shad**  
6 Fish Limit



**Oyster Toadfish**



**Sand Tiger Shark**



**Spanish Mackerel**  
10 Fish at 14"



**Atlantic Croaker**



**Sandbar Shark**



**Atlantic Cod**  
21" Size Limit

## New Jersey Division of Fish & Wildlife 2002 Marine Recreational Fishing Seasons Possession & Minimum Size Limits

Species	Open Season	Minimum Length	Harvest & Possession Limit (per person unless noted)
American Eel	No Closed Season	6"	50
Black Drum	No Closed Season	16"	3
<b>Black Sea Bass</b>	<b>No Closed Season</b>	<b>11 1/2"</b> Excluding tail filaments	25
Bluefish	No Closed Season	No Minimum	15
Cobia	No Closed Season	37"	2
Cod	No Closed Season	21"	No Limit
Haddock	No Closed Season	21"	No Limit
King Mackerel	No Closed Season	23"	3
Pollock	No Closed Season	19"	No Limit
<b>Porgy (Scup)</b>	<b>July 1–Oct. 31</b>	<b>10"</b>	50
Red Drum	No Closed Season	18"	5, only 1 over 27"
River Herring	No Closed Season	No Limit	35
Shad	No Closed Season	No minimum	6
Shark+ **except prohibited species	No Closed Season	48"	2 per vessel
Spanish Mackerel	No Closed Season	14"	10
<b>Striped bass or hybrid striped bass</b>			
—Del. River & tributaries (Rt. 1 bridge to Salem River & tributaries)	Mar. 1–Mar. 31 and June 1–Dec. 31	28" AND Greater or equal to 24" but less than 28"	1 AND 1
—Del. River & tributaries (upstream of Rt. 1 bridge)	Mar. 1–Dec. 31		
—Atlantic Ocean 0-3 miles from shore	No Closed Season		
—All other waters	Mar. 1–Dec. 31		
<b>Summer Flounder</b>	<b>May 18–September 24</b>	<b>16 1/2"</b>	8
Tautog	Oct. 10–May 31 June 1–Oct. 9	14" 14"	10 1
Weakfish	No Closed Season	14"	14
Winter Flounder	March 1–May 31 Sept. 15–Dec. 31	11"	No Limit
No species of fish with a minimum size limit listed above may be filleted or cleaned at sea (except striped bass if fillet is at least 28" long). (Party boats licensed to carry 15 or more passengers may apply for a permit to fillet the above species, except striped bass, at sea.)			
<b>Blue Crab</b>			
—peeler or shedder	No Closed Season*	3"	
—soft	No Closed Season*	3 1/2"	1 bushel
—hard	No Closed Season*	4 1/2"	
Lobster (carapace length)	No Closed Season	3 1/4" (see page 16)	6
Hard Clam—license required	No Closed Season	1 1/2"	150 clams
* Unless using non-collapsible, Chesapeake-style crab pots. See section on crab pots, pages 16 and 22. **Prohibited Sharks Species: basking shark, whale shark, white shark, sand tiger shark, bigeye tiger shark + Not including dogfish: see description on page 15.			

Regulations in red are new this year.

## Motor Boat Regulations

For information write:  
Division of Motor Vehicles  
PO Box 403, Trenton, NJ 08625-0403  
or contact your local DMV office  
for a boat "NJ" number.  
Hull numbers are issued by State Police  
after their inspection.

### STATE POLICE TROOP "F" MARINE LAW ENFORCEMENT STATIONS

Bivalve ..... 609-785-1330  
North Wildwood ..... 609-522-0393  
Atlantic City..... 609-441-3586  
Burlington ..... 609-387-1221  
Ocean ..... 609-296-5807  
Point Pleasant..... 732-899-5050  
Monmouth Cty. Det. .... 732-842-5171  
Lake Hopatcong..... 973-663-3400  
Newark Bay ..... 973-578-8173

To Subscribe  
Call  
New Jersey  
Outdoors  
at  
1-800-645-0038

## New Jersey's Natural and Historic Resources and Outdoor Recreation Magazine

Mention this ad and pay  
only \$13.50 for a new  
one-year subscription



That's  
20% off  
the  
cover  
price!



# Shellfish and Non-Commercial Crab Pot License Information

## **SHELLFISH & NON-COMMERCIAL CRAB POT LICENSE AGENTS** (For over the counter sales only)

### ATLANTIC COUNTY

- Conway's Marina, 3641 Atl.-Brigantine Blvd., Brigantine, 609-266-2628
- Egg Harbor True Value, 208 N. Philadelphia Ave., Egg Harbor, 609-965-0815
- +Gifford Marine, Inc. 124 Margate Blvd., Northfield, 609-383-9500
- Jersey State Marina, 601 Bayshore Ave., Brigantine, 609-266-7011
- Misty Morning Marina, 1820 Mays Ldg.-Somers Pt Rd., EH Twp., 609-927-5303
- +Nacote Creek Shellfish Office, Route 9, Mile 51, Port Republic, 609-748-2040
- #Zeus Sporting Goods, 6679 Black Horse Pike, EH Twp., 609-646-1668

### CAPE MAY COUNTY

- Avalon Hodge Podge, 2389 Ocean Dr., Avalon, 609-967-3274
- Budd's B&T, 109 Fullingmill Rd., Villas, 609-886-6935
- Capt. Tate's Tackle Box, Route 47-83, Dennisville, 609-861-4001
- +City Hall, 9th & Asbury Ave., Ocean City, 609-399-6111
- +Just Sports, 21 W. Mechanic St., Cape May CH, 609-465-6171
- Red Dog B&T, 367 43rd St., Sea Isle City, 609-263-7914
- +Upper Twp. Municipal Bldg., 2100 Tuckahoe Rd., Petersburg, 609-628-2011, Ext 200

### CUMBERLAND COUNTY

- +Bivalve Shellfish Office, 6959 Miller Ave., Port Norris, 856-785-0730
- Maurice River Sports Ctr., 329 W. Main St., Millville, 856-825-5500
- Snyder's Bait & Tackle, 2896 S. Delsea Dr., Vineland, 856-692-2103

### GLOUCESTER COUNTY

- Washington Twp. Parks, Hurfville-Cross Keys Rd., Turnersville, 856-589-6427
- Borough of Paulsboro, 1211 Delaware St., Paulsboro, 856-423-1500

### MERCER COUNTY

- +NJ Div. Fish and Wildlife, 501 E. State St., 3rd Fl., Trenton, 609-292-2965

### MIDDLESEX

- Sayreville Sportsman Shop, 52 Washington Ave., Sayreville, 732-238-2060

### MONMOUTH COUNTY

- Brielle Tackle, 800 Ashley Ave., Brielle, 732-528-5720

### OCEAN COUNTY

- American Sportsman, 857 Mill Creek Rd., Manahawkin, 609-597-4104
- Barnegat Boat Basin, 491 E. Bay Ave., Barnegat, 609-698-8581
- Bruce & Pat's B&T Shop, 317 Long Beach Blvd., Surf City, 609-494-2333
- +Clarke's Marine Supply, 227 E. Main St. (Route 9), Tuckerton, 609-294-0166
- Downe's Bait & Tackle, 287 Brennan Concourse, Bayville, 732-269-0137
- Eastern Bait & Tackle, 507 Route 9, Bayville, 732-237-0553
- Fishermen's Headquarters, 280 W. 9th St., Ship Bottom, 609-494-5739
- George's Sports-A-Rama, 2597 Hooper Ave., Bricktown, 732-477-6671
- Grizz's Forked River B&T, 232 N. Main St., Forked River, 609-693-9298
- Lacey Marine, 308 Route 9, South, Forked River, 609-693-0151
- Mole's Bait & Tackle, 403 Route 9, Waretown, 609-693-3318
- Pell's Fish & Sport Shop, 335 Mantoloking Rd., Bricktown, 732-477-2121
- +Scott's Bait & Tackle, 945 Radio Rd., Little Egg Harbor Twp., 609-296-1300
- Wheel House Marina, 267 24th Ave., So. Seaside Park, 732-793-3296

### SOMERSET COUNTY

- Efinger's Sporting Goods, 513 W. Union Ave., Bound Brook, 732-356-0604

# Sell only clam licenses

+ Also sells oyster licenses

**P**rior to harvesting any shellfish, be certain to consult the Shellfish Growing Water Classification Charts published by the Division of Watershed Management, available at any shellfish license agent, state shellfish office or Marine Police Station, or call 609-748-2000.

- **Residential recreational clam:** \$10.
- Harvest limit of 150 hard, soft, surf clams per day. Sale of catch prohibited.
- **Non-resident recreational clam:** \$20. Harvest limit of 150 hard, soft, surf clams per day. Sale of catch prohibited. License valid only during the months of June, July, August and September.
- **Juvenile recreational clam:** \$2. For persons under 14 years of age. Subject to same restrictions as resident or nonresident adult recreational license holders.
- **Commercial clam:** \$50. Unlimited harvest. Clams may be sold to certified dealers only.
- **Oyster, commercial or recreational:** \$10. Unlimited oyster harvest. Oysters may be sold to certified dealers only.
- **Senior Citizen recreational:** FREE. NJ resident 62 years of age or older for clam/oyster license. Harvest limit of 150 clams per day. Unlimited oyster harvest. Sale of clams or oysters prohibited. There is a \$2 application fee for the Senior Citizen Recreational Shellfish License.
- **Disabled veterans:** may apply for free recreational clamming or crab pot licenses at the following Division offices:  
Trenton Office  
Pequest Hatchery & Ed. Ctr.  
Nacote Creek Research Station  
Northern Region Office  
Central Region Office  
Southern Region Office  
For locations, see Directory, page 3
- **Mussels:** no license required. Mussels may only be harvested from approved waters.
- **Recreational crab pot license applications:** are also available on our web site: [www.njfishandwildlife.com](http://www.njfishandwildlife.com)

**NOTE:** When obtaining a license from a license agent, an additional \$1 fee is charged.