

ATTENTION ANGLERS

2003 NJ Minimum Size, Possession Limits & Seasons

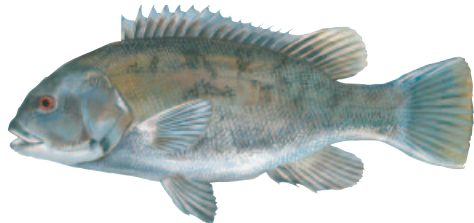
Fish are measured from tip of snout to tip of tail (except Black Sea Bass). Cleaning or filleting of fish with a minimum size limit while at sea is prohibited. **Red** text indicates a change this year.



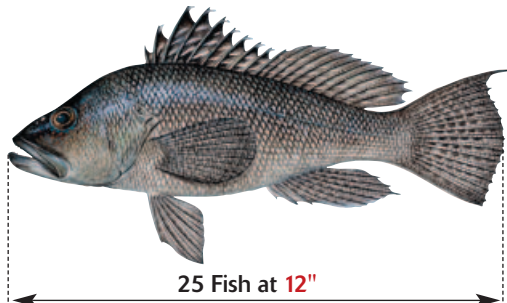
Weakfish
8 Fish at 13"



Summer Flounder (Fluke)
8 Fish at 16 1/2"
Open Season **5/3-10/13**



Tautog 14"
4 Fish-1/1-5/31 • 1 Fish-6/1-11/14
8 Fish 11/15-12/31



Open Season **1/1-9/1 & 9/16-11/30**
Black Sea Bass



Bluefish
15 fish no minimum size

PROHIBITED SPECIES

It is illegal to take, possess or land any of the following species:

- BIGEYE SAND TIGER SHARK**
- SHORTNOSE STURGEON**
- ATLANTIC STURGEON**
- SAND TIGER SHARK**
- BASKING SHARK**
- WHALE SHARK**
- WHITE SHARK**

OTHER SPECIES

	Possession Limit	Total Length
American Eel	50	6"
Cobia	2	37"
Cod	No Limit	21"
Haddock	No Limit	21"
King Mackerel	3	23"
Pollock	No Limit	19"
River Herring	35	No Limit
Lobster	6	3 5/16" * (Carapace Length)

*See page 16



Hard Clam
recreational limit-150 clams
No harvest on Sunday.
(See pg. 17 for exceptions)

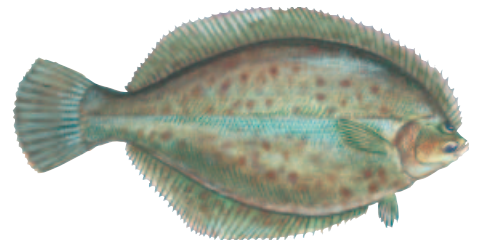


Striped Bass or Hybrid Striped Bass
1 fish at 28"

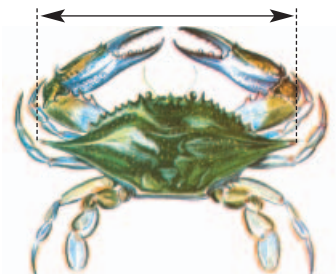
1 fish at 24" or greater, but less than 28"
Del. River & tribs. (Rt. 1 Bridge); Trenton, to Salem River & tribs. Open 3/1-3/31 & 6/1-12/31

Atlantic Ocean: (0-3 miles from shore), no closed season; (greater than 3 miles from shore) closed year round

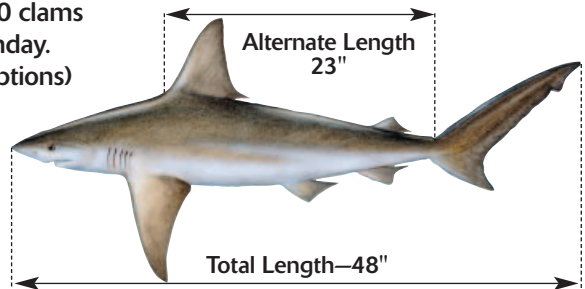
All other marine waters, open 3/1-12/31



Winter Flounder
11" • Open Seasons: 3/1-5/31; 9/15-12/31



Blue Crab (point to point)
Peeler or Shedder-3"
Soft-3 1/2" • Hard-4 1/2"
recreational limit-one bushel



Shark
2 Fish per vessel