

2003 Study Areas

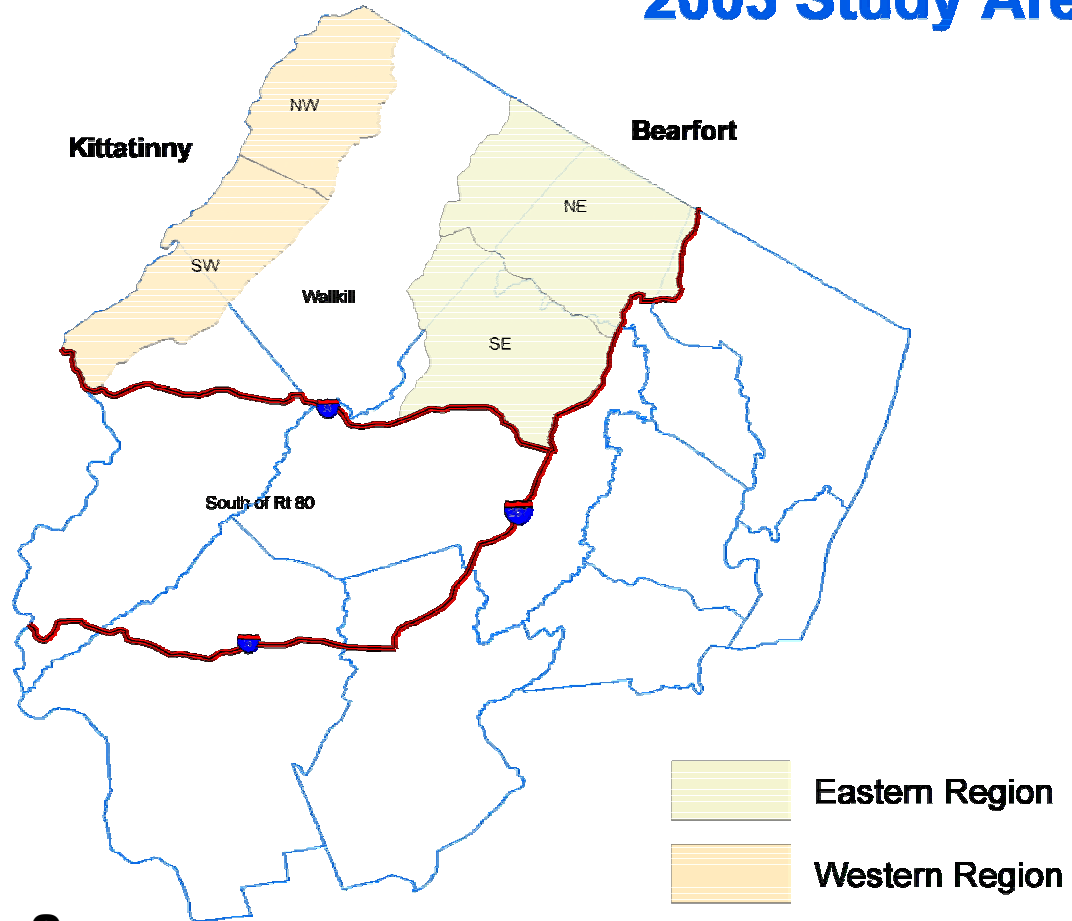


Figure 2.

Figure 2. 2003 Study Area

Black Bear Occurrence in New Jersey

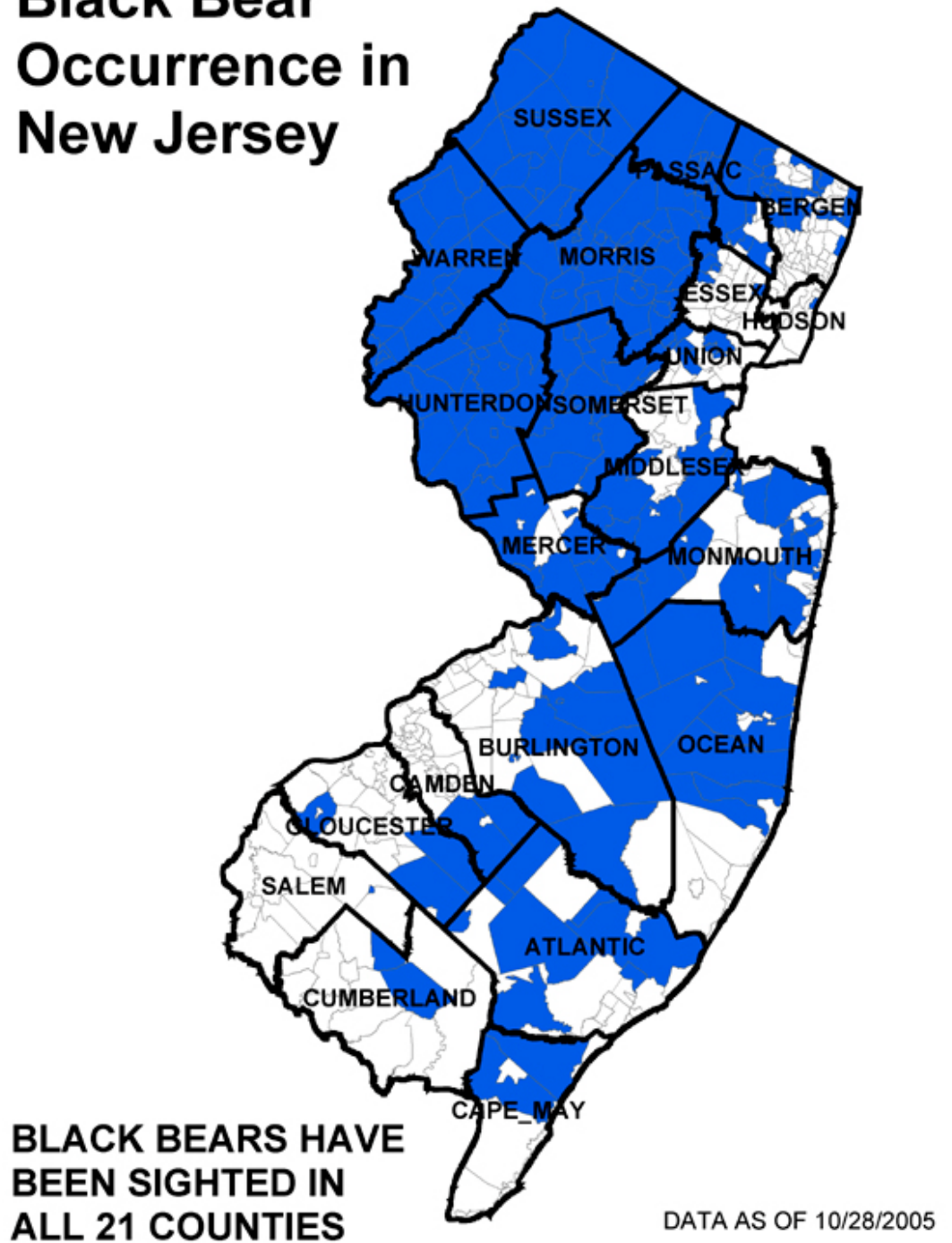


Figure 3. Current Range Map 2005

Black Bear Habitat

Based on
Land Use /
Land Cover

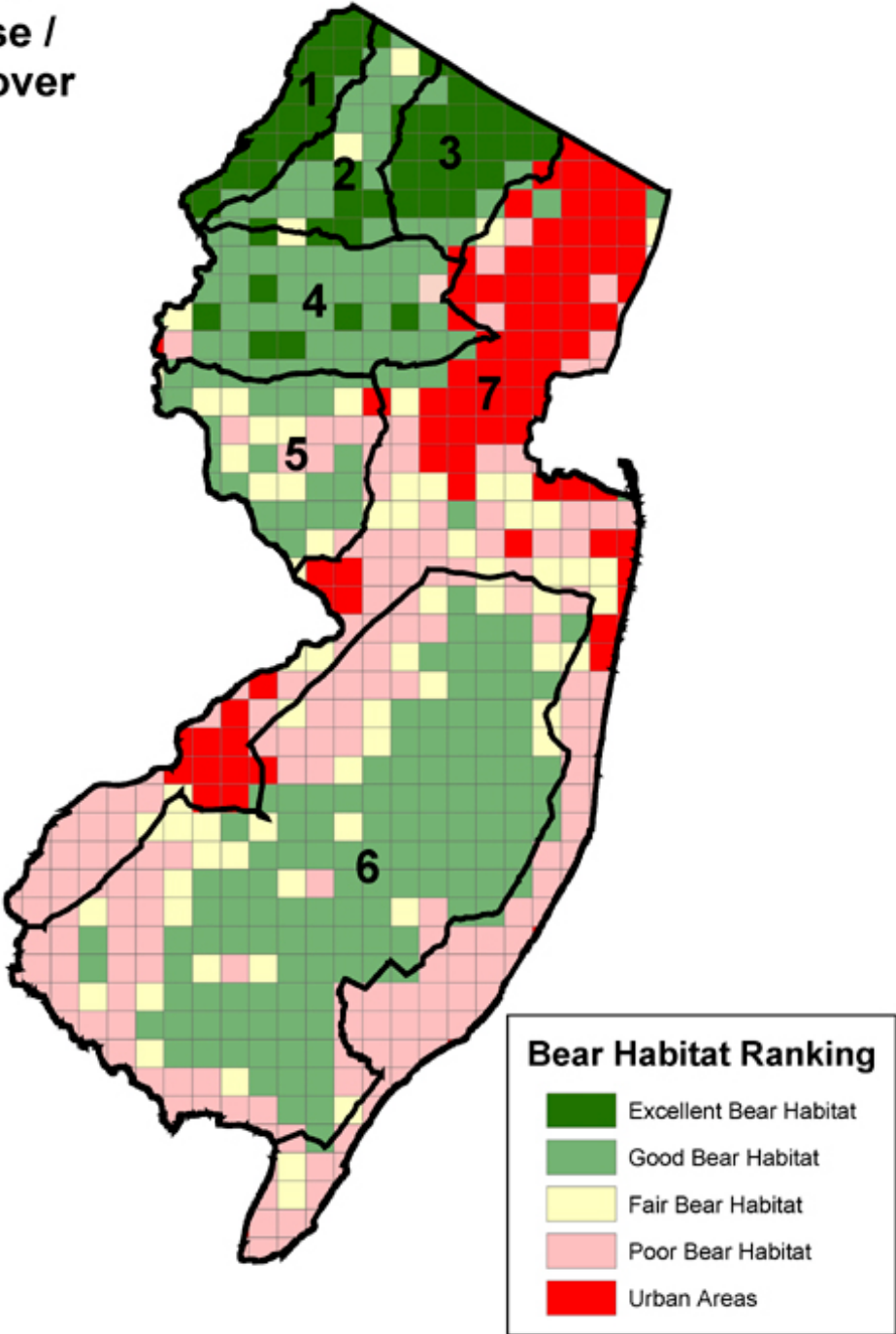


Figure 4. Bear Habitat Ranking

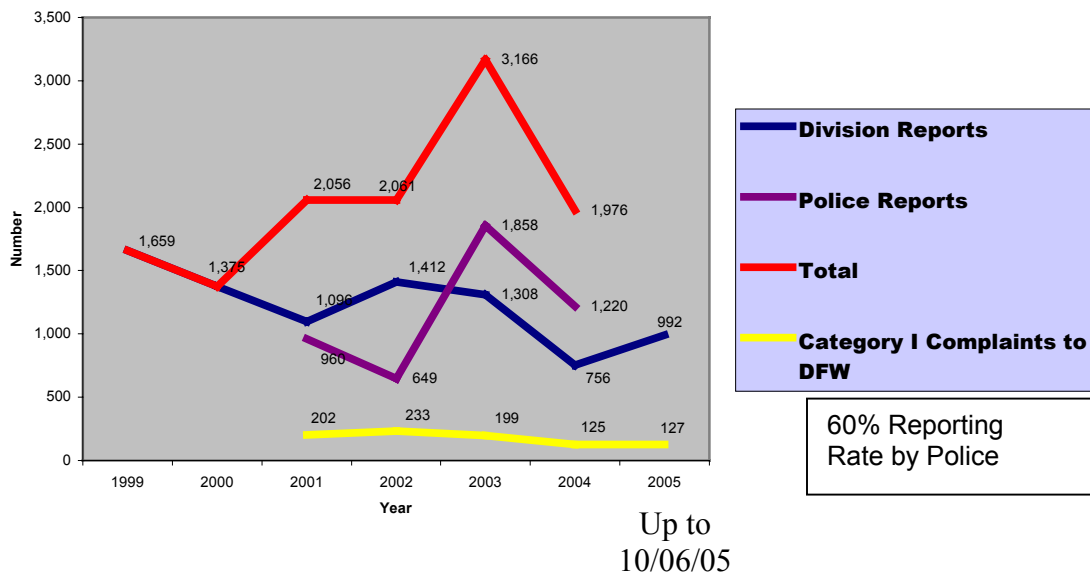


Figure 5. Bear Complaints (negative human-bear interactions over time). Does not include sightings

BEAR MANAGEMENT ZONES

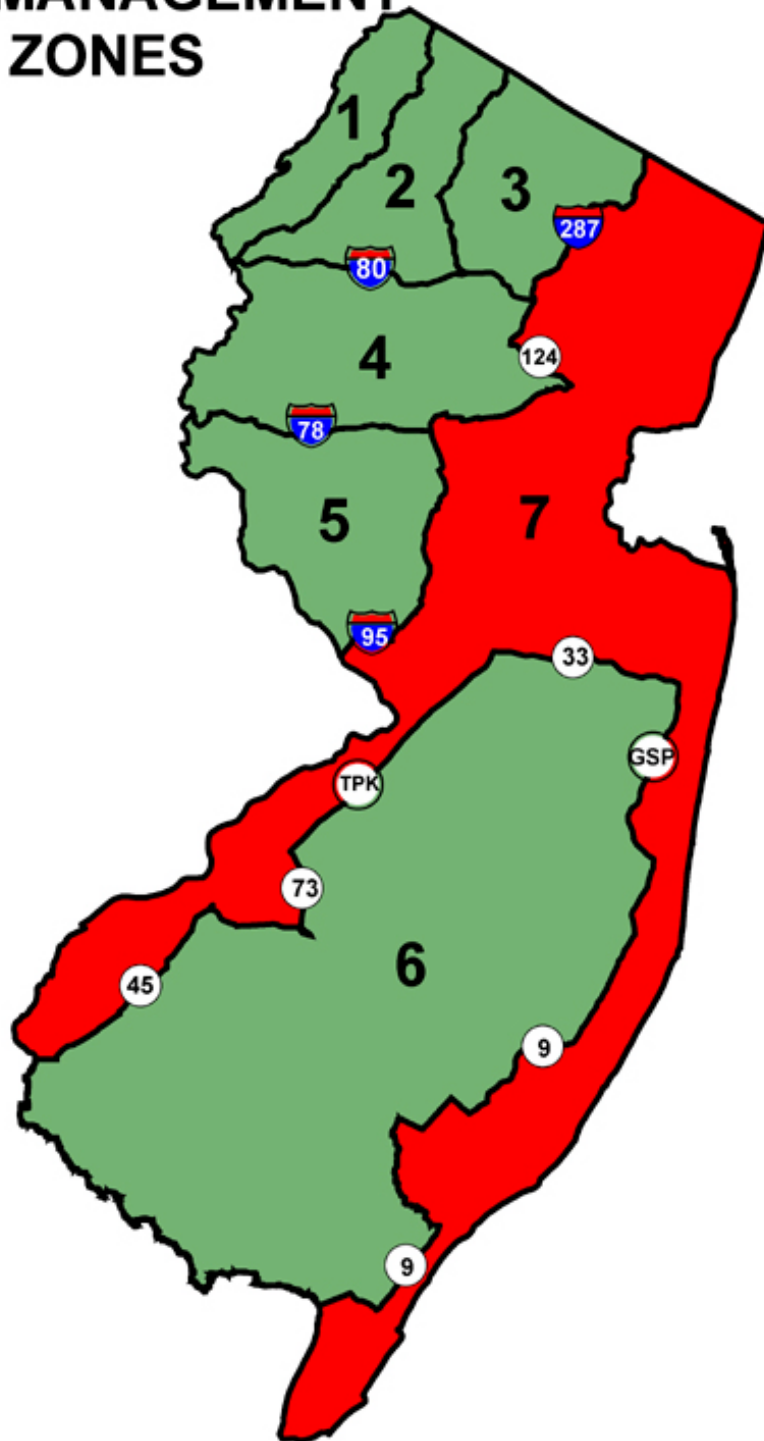
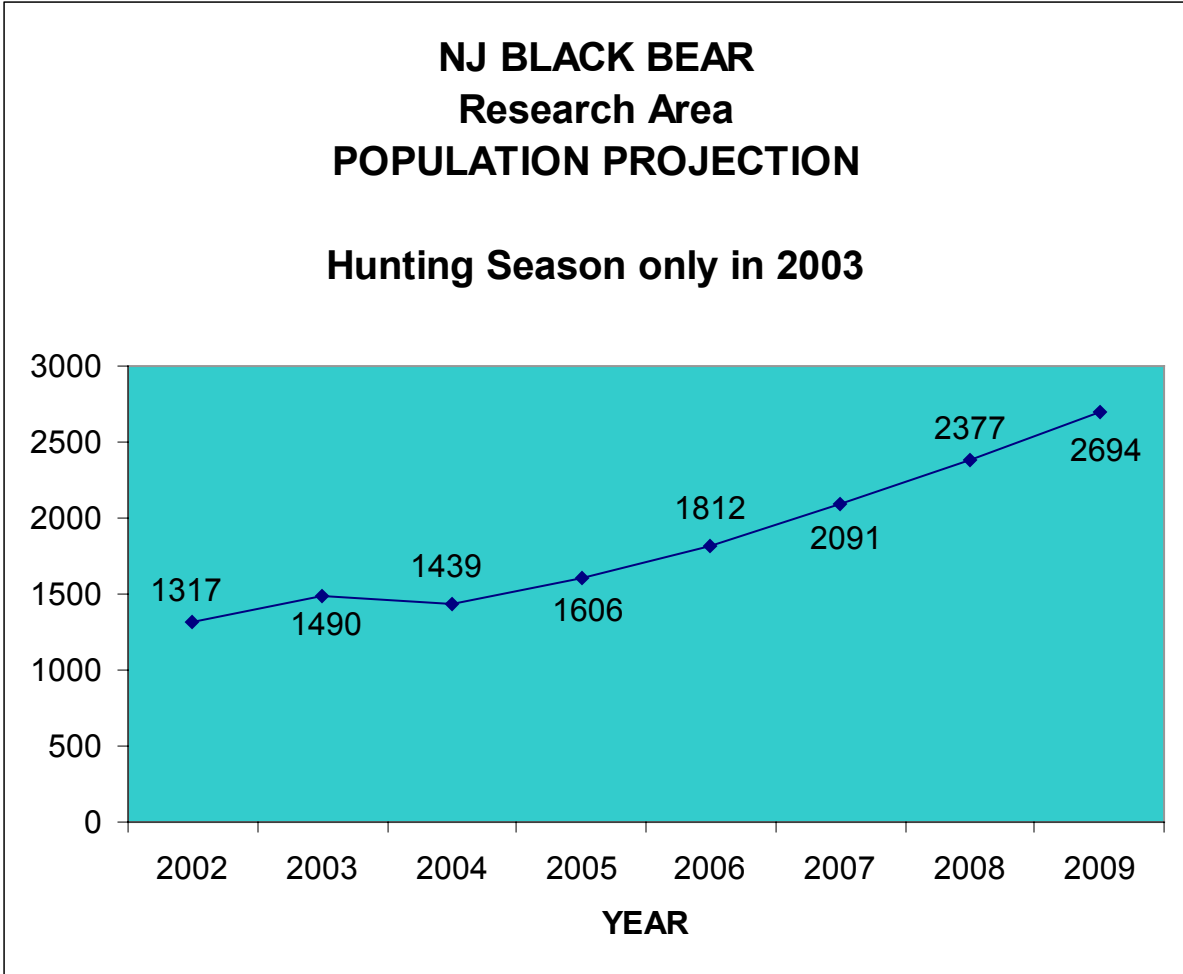
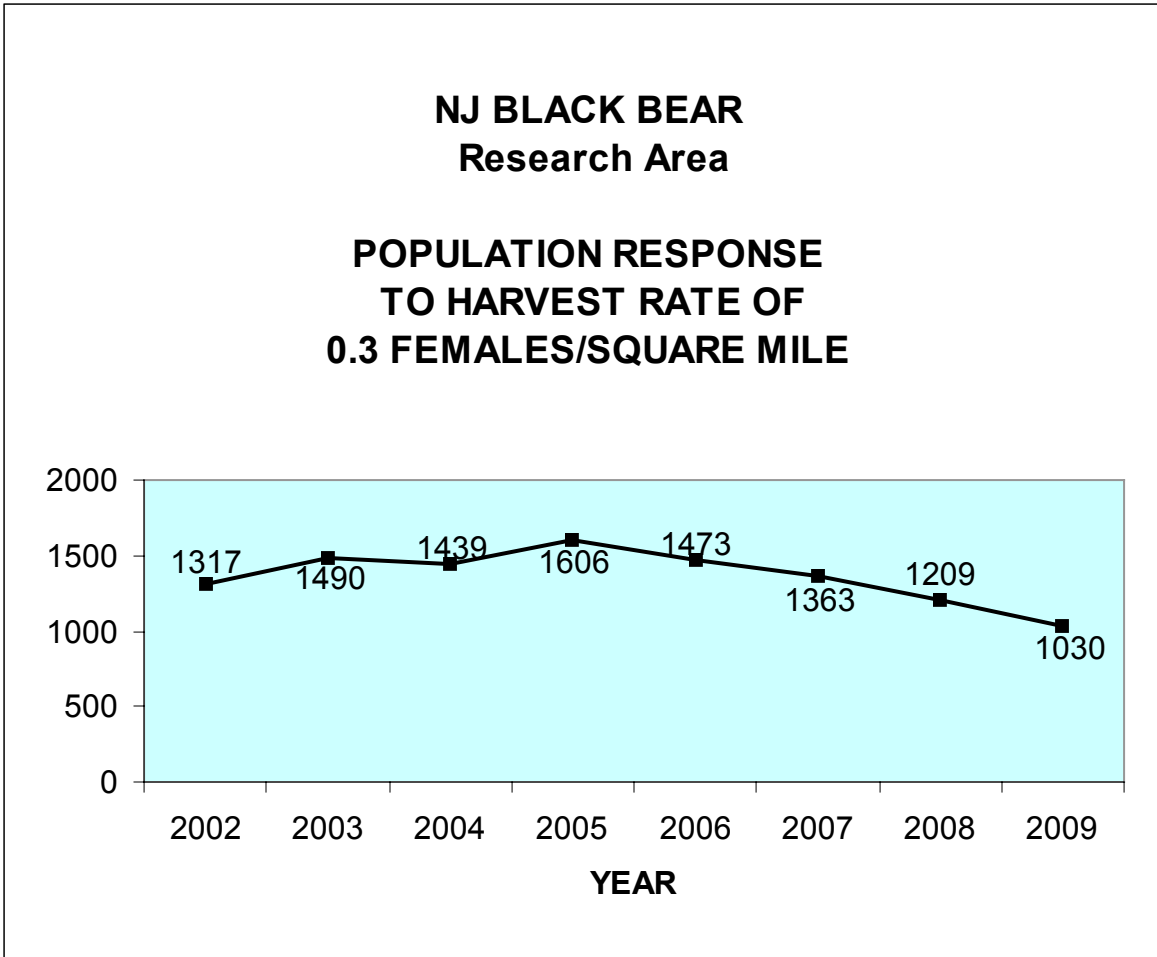


Figure 6. Bear Management Zones



Population estimate on December 1 in Research Study Area

Figure 7. Projected Black Bear Population in Research Study Area with no further hunting seasons other than the 2003 Black Bear Hunting Season.



Population estimate on December 1 in Research Study Area

Figure 8. Projected Black Bear Population in Research Study Area with a harvest rate of 0.3 females/square mile during Black Bear Hunting Seasons.