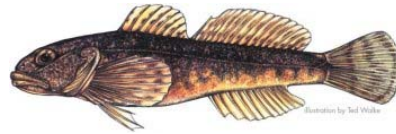


Slimy Sculpin (*Cottus cognatus*)

General Information

Sculpins prefer high gradient waters with rock, gravel substrate, which limits their distribution to the northern waters of the state. They are intolerant of impaired water qualities.



Native Range

Northern North America to extreme northeastern Siberia. In North America, it occurs from Virginia, Labrador and Ungava on the east, westward through most of northern North America to Alaska, and on St. Lawrence Island in the Bering Sea. (Scott and Crossman 1973).

Habitat Description

River: Cool, rock/gravel; headwater streams.

Lake: Occurs in lakes outside the state but in New Jersey it is essentially limited to stream environments.

Optimum Habitat Requirements

Dissolved Oxygen	
Temperature	4 – 16°C
pH	
Turbidity	
Current	

Diet

Fry	Insects
Juveniles	Insects
Adults	Insects
Notes: Activity mostly nocturnal	

Reproduction

Time of Year	May	Age Males Mature	
Temperature Range	5 – 8°C	Age Females Mature	
Water Depth	< 1.5 m	Nest	Under a ledge, rock or root
Substrate	Rocks, submerged tree roots	Egg Type	Adhesive
Time of Day		Parental Care	Male
Critical pH		Days to Hatching	28
Velocity Range		Oxygen Level	

Notes: Eggs deposited on the ceiling of the nest, nests usually contain eggs from more than 1 female.