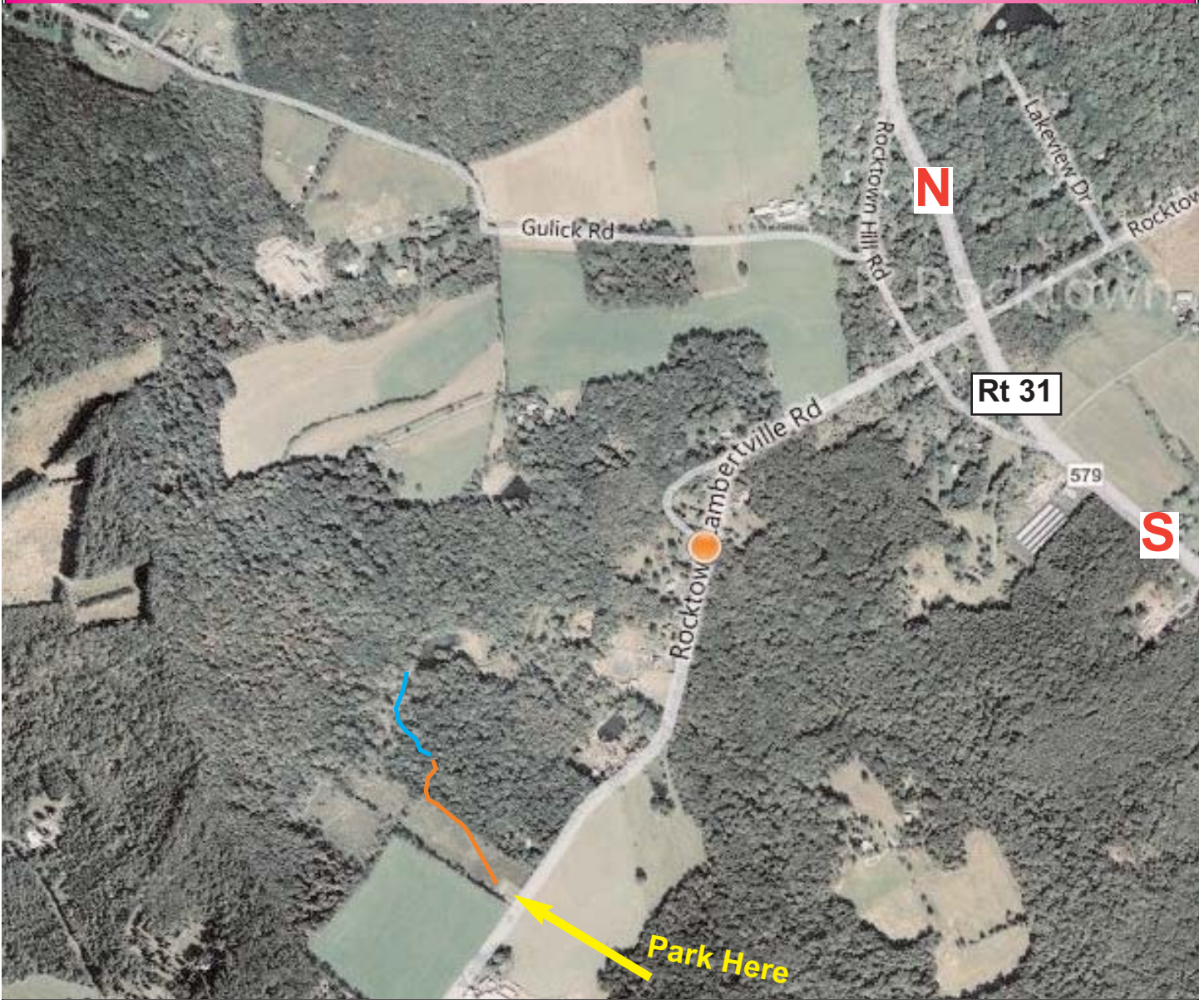




Alexauken Wildlife Management Area Thursday, July 7, 2011 at 9:30 am



Trail Highlights

The first half of the hike (orange marker) is through an open field in search of song birds. The second half is a bushwhack to the wetland shown on the map (blue marker). Bring your binoculars, bug spray, bird field guide, ample water and an energy snack. Total time for this hike is approximately 2.5 hours.

For more information about the Wildlife Management Area System visit www.njfishandwildlife.com/wmas.htm. Wildlife Management Area maps are available on the site in PDF format.