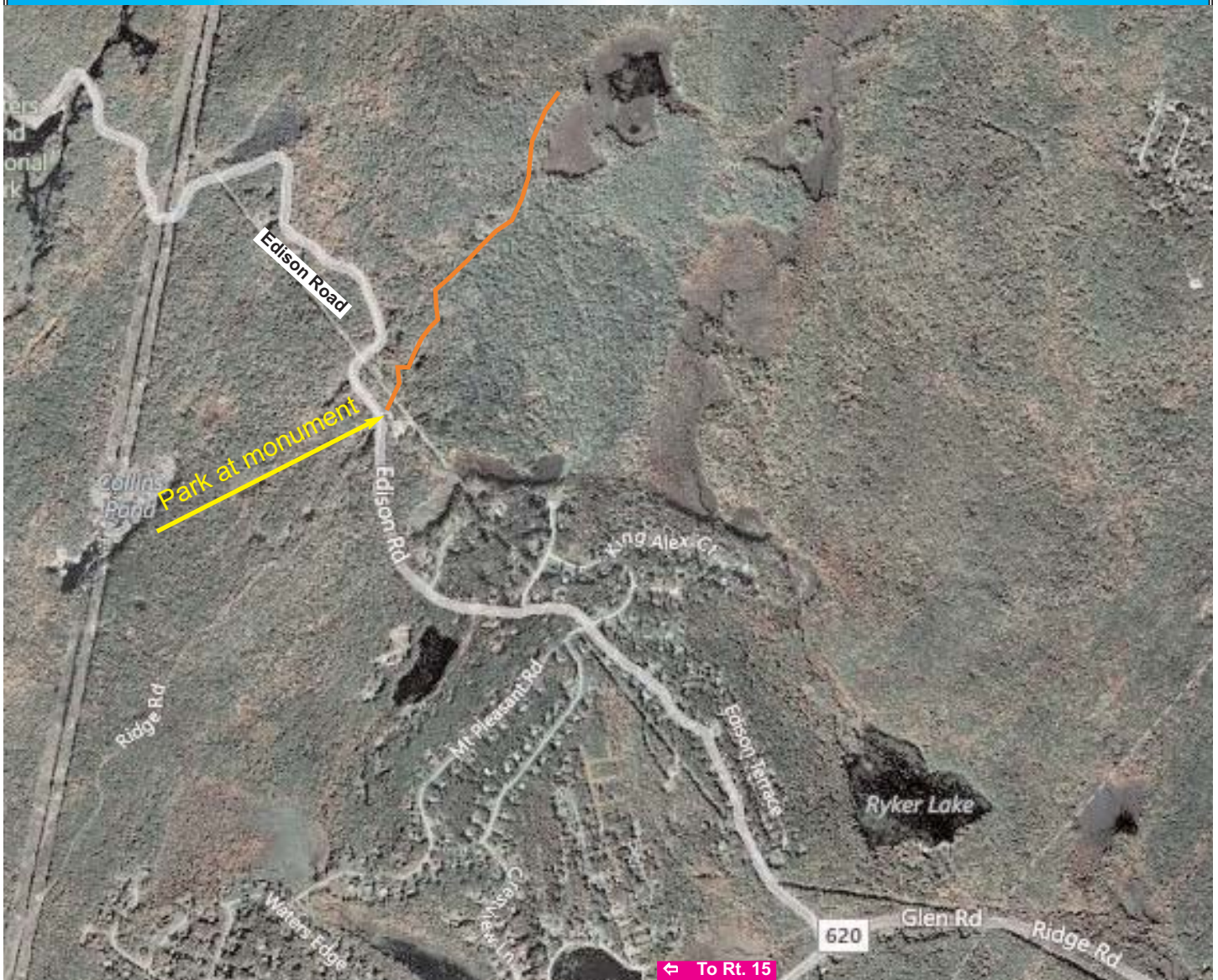




Sparta Mountain Wildlife Management Area (Thomas Edison Monument) Tuesday, August 16, 2011 at 9:30 am



Trail Highlights

The diverse terrain of this site makes for an engaging hike through a mixed forest, over glacial till and along an abandoned railroad bed to a wetland. Bring your binoculars, bird and plant field guides, ample water and an energy snack. We will also explore two geocaches along the way. The hike will run approximately 3-4 hours depending on participants.

There is also a monument here to Thomas Alva Edison who on this site in 1891 built an enormous complex of mines, crushers, separators, and subsidiary buildings known as the Edison Mines or "The Works of the New Jersey and Pennsylvania Concentrating Company." The mine produced concentrated iron briquettes, and employed more than 500 men during its peak production. The mine closed on September 30, 1900.

For more information about the Wildlife Management Area System visit www.njfishandwildlife.com/wmas.htm. Wildlife Management Area maps are available on the site in PDF format.