

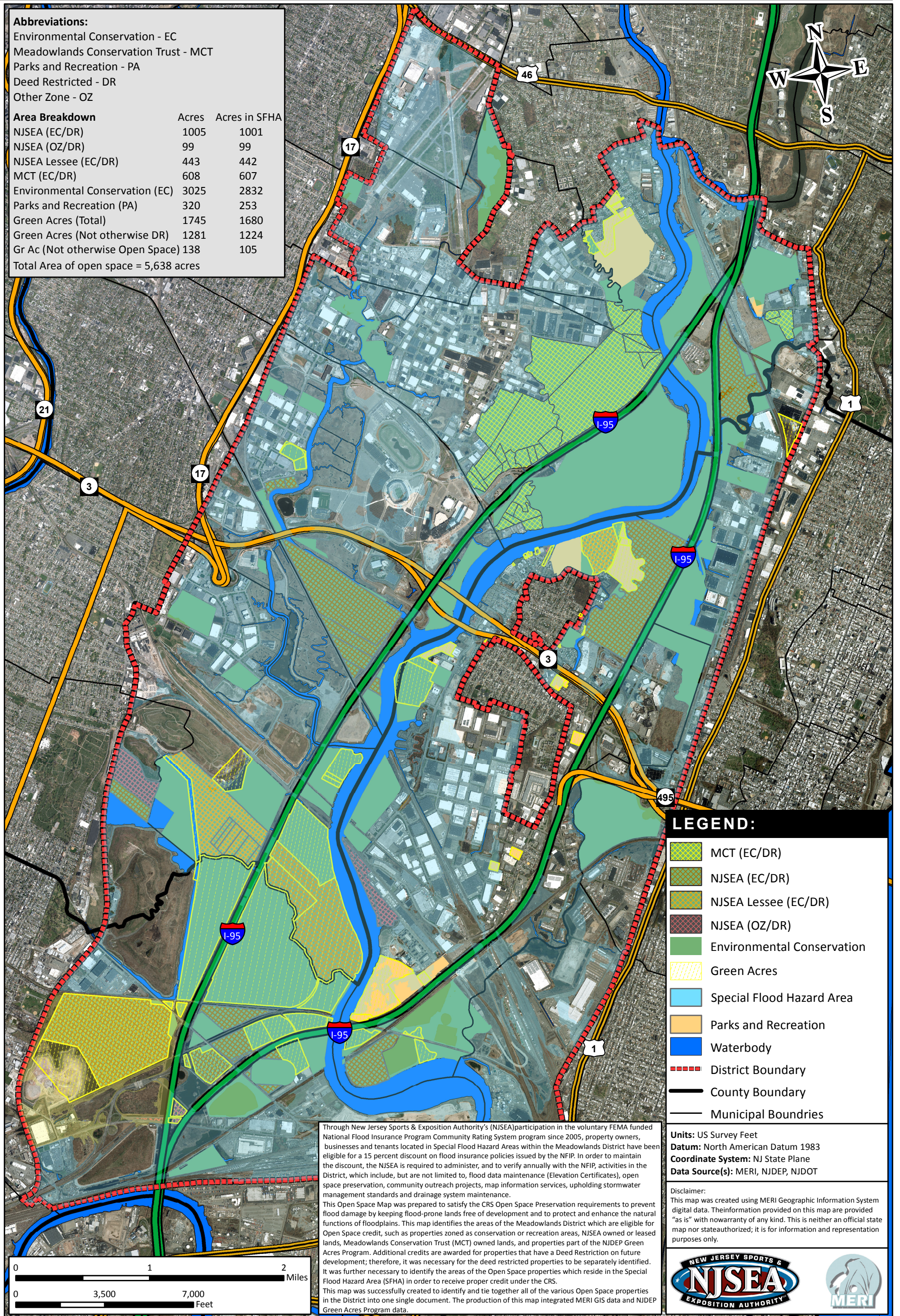
OPEN SPACE MAP WITH SFHA

Abbreviations:

Environmental Conservation - EC
 Meadowlands Conservation Trust - MCT
 Parks and Recreation - PA
 Deed Restricted - DR
 Other Zone - OZ

Area Breakdown

	Acres	Acres in SFHA
NJSEA (EC/DR)	1005	1001
NJSEA (OZ/DR)	99	99
NJSEA Lessee (EC/DR)	443	442
MCT (EC/DR)	608	607
Environmental Conservation (EC)	3025	2832
Parks and Recreation (PA)	320	253
Green Acres (Total)	1745	1680
Green Acres (Not otherwise DR)	1281	1224
Gr Ac (Not otherwise Open Space)	138	105
Total Area of open space = 5,638 acres		



LEGEND:

- MCT (EC/DR)
- NJSEA (EC/DR)
- NJSEA Lessee (EC/DR)
- NJSEA (OZ/DR)
- Environmental Conservation
- Green Acres
- Special Flood Hazard Area
- Parks and Recreation
- Waterbody
- District Boundary
- County Boundary
- Municipal Boundaries

Units: US Survey Feet
Datum: North American Datum 1983
Coordinate System: NJ State Plane
Data Source(s): MERI, NJDEP, NJDOT

Disclaimer:
 This map was created using MERI Geographic Information System digital data. The information provided on this map are provided "as is" with no warranty of any kind. This is neither an official state map nor state authorized; it is for information and representation purposes only.



Through New Jersey Sports & Exposition Authority's (NJSEA) participation in the voluntary FEMA funded National Flood Insurance Program Community Rating System program since 2005, property owners, businesses and tenants located in Special Flood Hazard Areas within the Meadowlands District have been eligible for a 15 percent discount on flood insurance policies issued by the NFIP. In order to maintain the discount, the NJSEA is required to administer, and to verify annually with the NFIP, activities in the District, which include, but are not limited to, flood data maintenance (Elevation Certificates), open space preservation, community outreach projects, map information services, upholding stormwater management standards and drainage system maintenance.

This Open Space Map was prepared to satisfy the CRS Open Space Preservation requirements to prevent flood damage by keeping flood-prone lands free of development and to protect and enhance the natural functions of floodplains. This map identifies the areas of the Meadowlands District which are eligible for Open Space credit, such as properties zoned as conservation or recreation areas, NJSEA owned or leased lands, Meadowlands Conservation Trust (MCT) owned lands, and properties part of the NJDEP Green Acres Program. Additional credits are awarded for properties that have a Deed Restriction on future development; therefore, it was necessary for the deed restricted properties to be separately identified. It was further necessary to identify the areas of the Open Space properties which reside in the Special Flood Hazard Area (SFHA) in order to receive proper credit under the CRS.

This map was successfully created to identify and tie together all of the various Open Space properties in the District into one single document. The production of this map integrated MERI GIS data and NJDEP Green Acres Program data.

