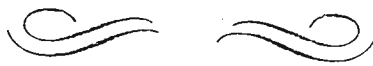
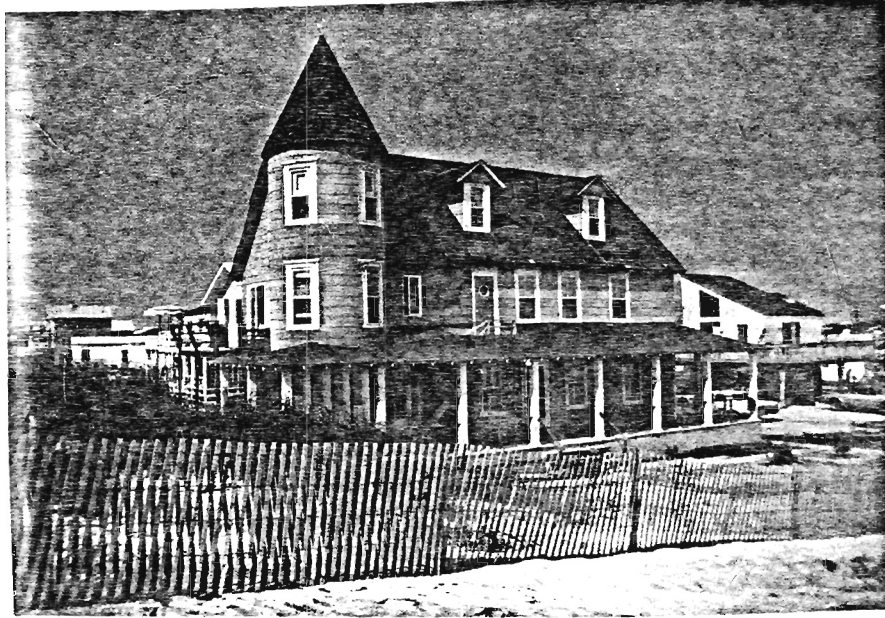


SURF CITY



SURF CITY

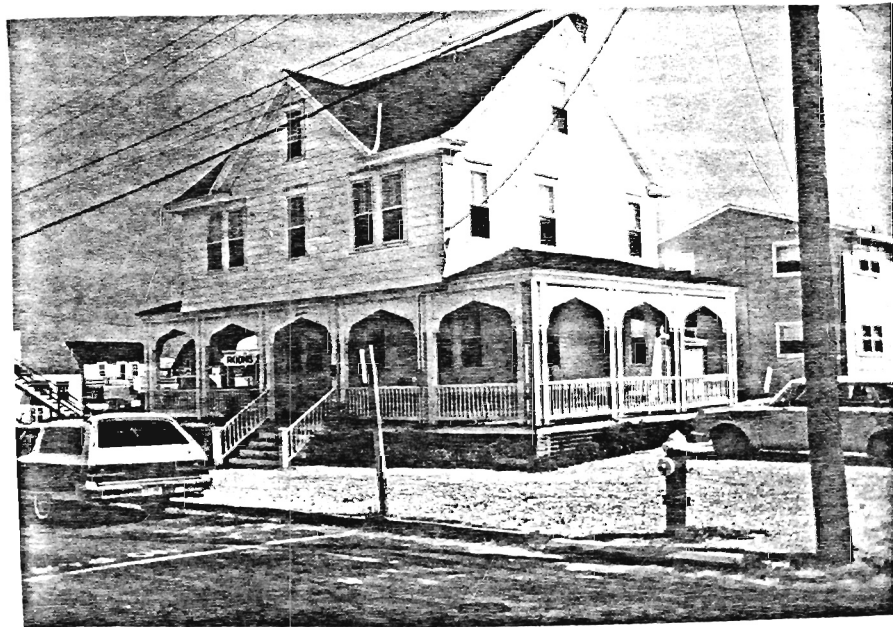
1532-L1



4 Twelfth Street

2½ story, 5 bay, asbestos siding with gable roof. A turret with conical roof is located in the northwest corner. Various window types can be found including gabled dormers, Queen Anne windows and 2/2 windows. An open porch has square posts and exposed rafter tails.

1532-L2

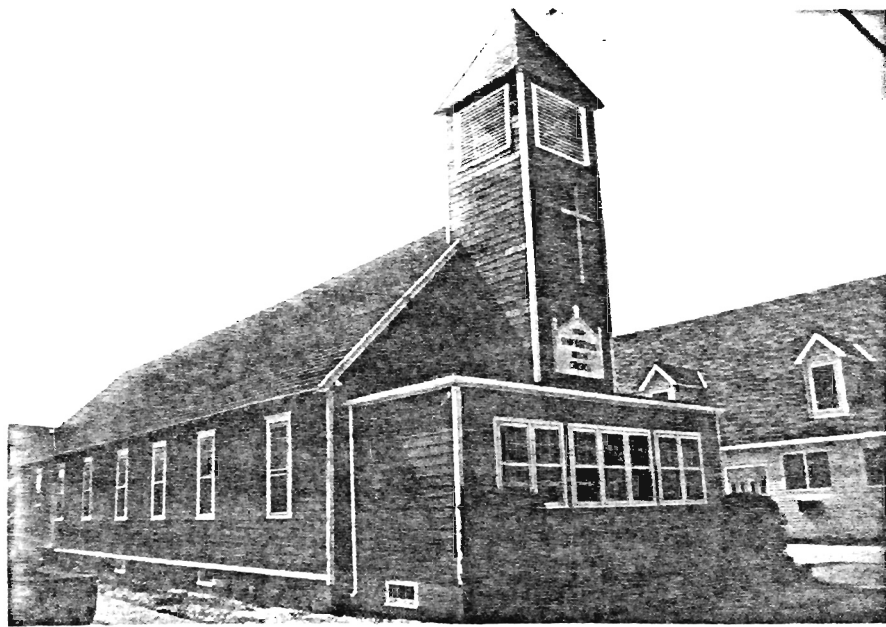


17 Thirteenth Street

2½ story, 3 bay, wood frame with asbestos siding, cross gable roof with returns. An open porch on piers has square posts, turned balustrade and Moorish arch spans between each post.

SHIP BOTTOM

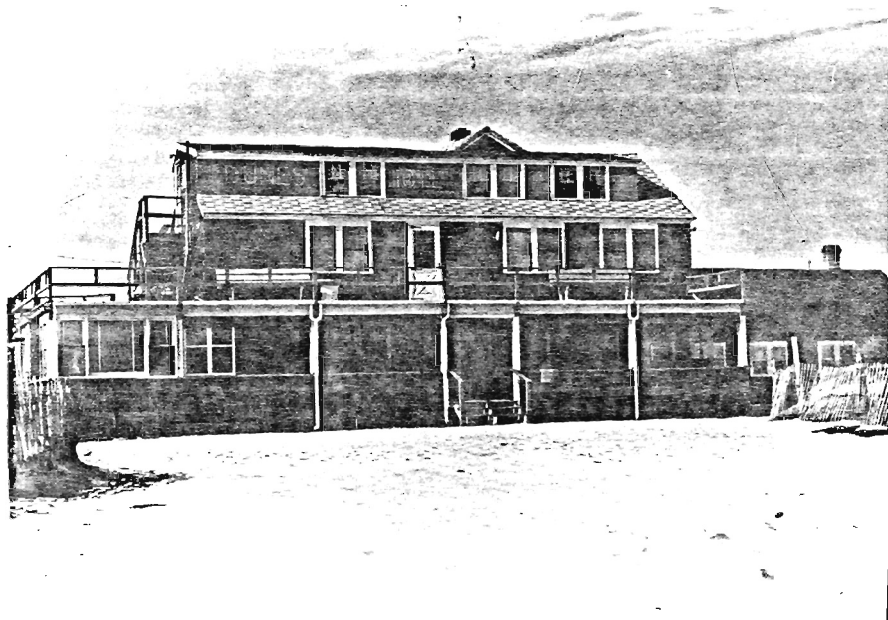
1529-L1



Ship Bottom Union Church

1 story, with painted shingle exterior, gable roof. A modernized tower is located across the facade and new wings have been built to the south. The church has carved roof trusses and molded window surrounds. The structure has been internally altered by an eastern extension.

1529-L2

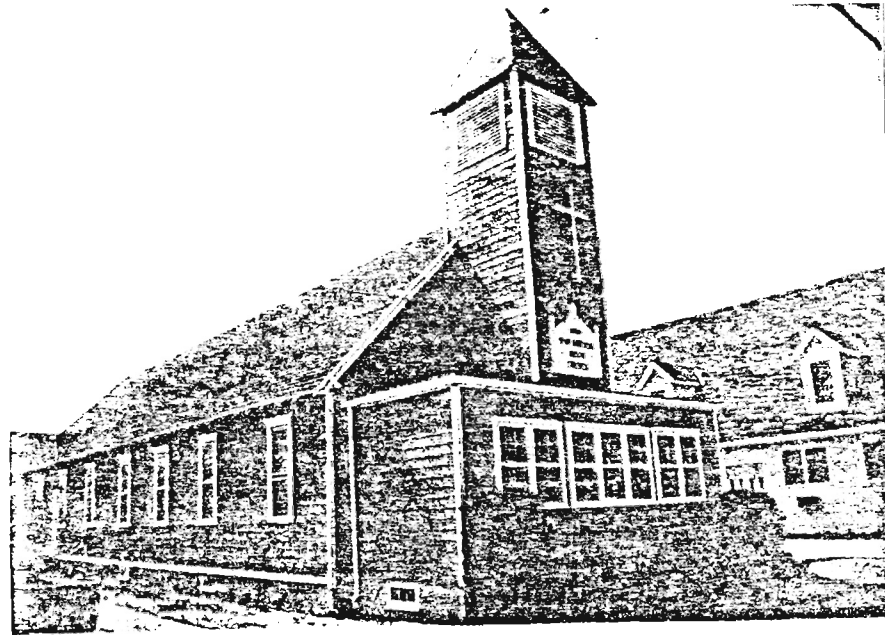


Camp Dune / Ocean between 25th and 26th Street

2½ story, 3 bay, cedar shingle exterior, gable roof. 5/1 windows and shed dormers are found on the facade. This building, c.1917 was a summer camp for wealthy girls in the early 1920's run by Dr. Sibley, who later became Ship Bottom's first mayor.

SHIP BOTTOM

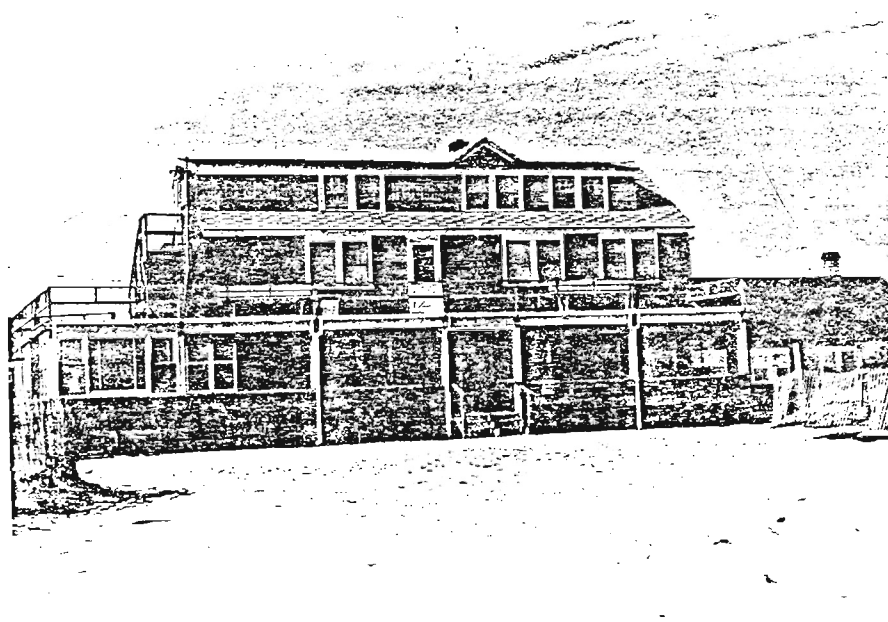
1529-L1



Ship Bottom Union Church

1 story, with painted shingle exterior, gable roof. A modernized tower is located across the facade and new wings have been built to the south. The church has carved roof trusses and molded window surrounds. The structure has been internally altered by an eastern extension.

1529-L2



Camp Dune / Ocean between 25th and 26th Street

2½ story, 3 bay, cedar shingle exterior, gable roof. 5/1 windows and shed dormers are found on the facade. This building, c.1917 was a summer camp for wealthy girls in the early 1920's run by Dr. Sibley, who later became Ship Bottom's first mayor.