



State of New Jersey
Department of Environmental Protection
Geological Survey



Information Disclaimer

The State of New Jersey makes great effort to provide secure, accurate and complete information. However, portions of the information contained here may be incorrect or not current.

The State of New Jersey, its officers, employees or agents shall not be liable for damages or losses of any kind arising out of or in connection with the use or performance of information, including but not limited to, damages or losses caused by reliance upon the accuracy or timeliness of any such information, or damages incurred from the viewing, distributing, or copying of those materials.

The materials and information provided here are provided "as is." No warranty of any kind, implied, expressed, or statutory, including but not limited to the warranties of non-infringement of third party rights, title, merchantability, fitness for a particular purpose, and freedom from computer virus, is given with respect to the contents of this document.

Mt HOPE
MINERAL R.R.

MT PLEASANT
(100 acres)

RICHARD
MINE

ALLEN LEASE
38 acres

ALLENTEE
165 acres

TEABO
186 acres

NORTH

VEIN

APEX

84 acres

SOUTH

VEIN

APEX

10 Acres ±

New Shaft

ASH Lot
8 acres

202 Acres ±

165 Acres ±

Misc Lands
about 130 acres

NORTH VEIN

3000 FT.

HORIZON

Lands of "Baker Heirs" are shown within yellow lines
Lands within Red lines are those of Wharton Steel Company's Allen Mine Tract acquired by Thomas Iron Company April 26, 1919.

Note: This data taken from the plat of a report to the THOMAS IRON Co. Dated Apr. 3, 1919.

by (Prof.) W. Spencer Hutchinson

Which states = New Data Added Nov 3, 1930 = but does not indicate same.

R.C. Baker
6/6/44



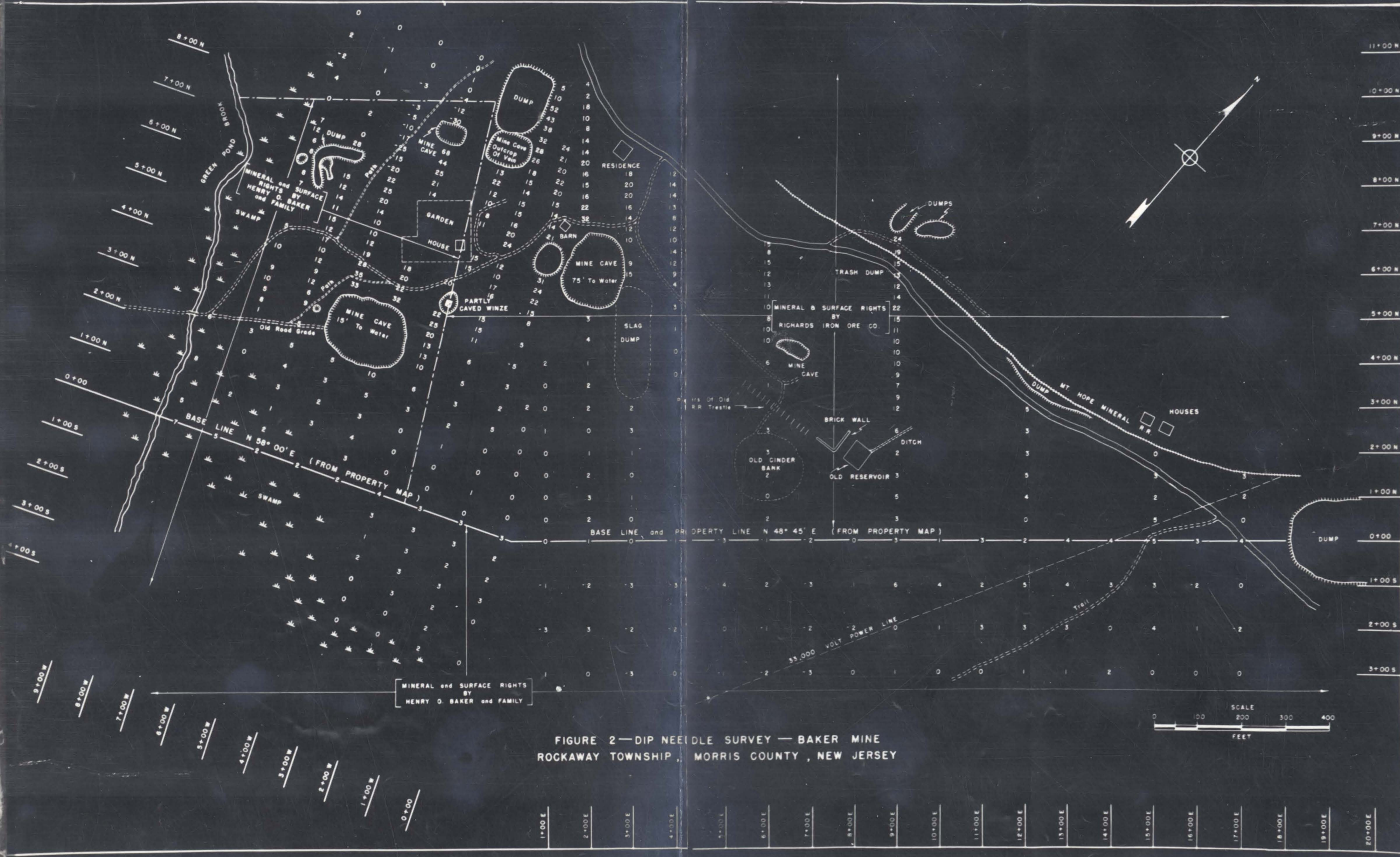
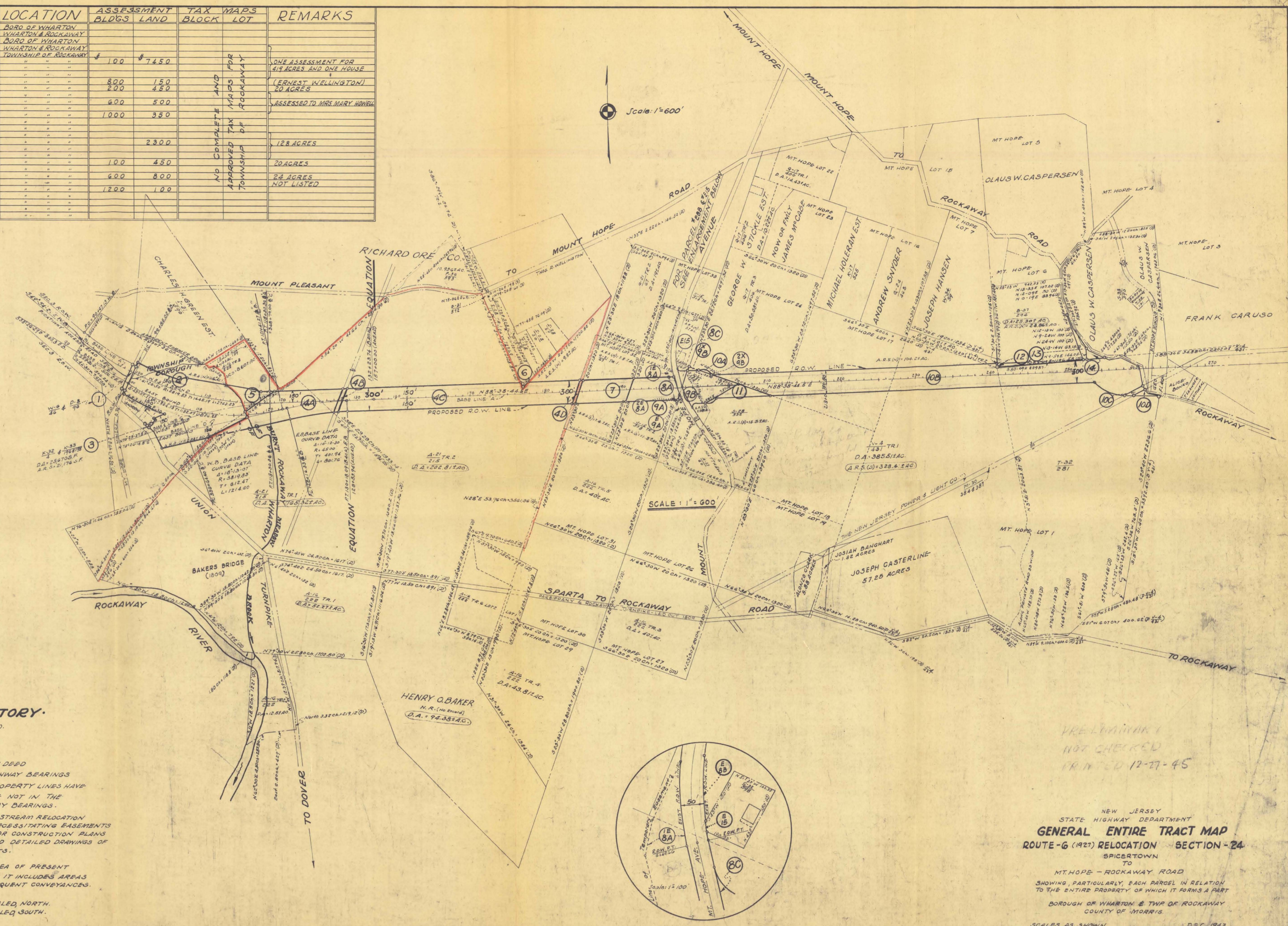


FIGURE 2—DIP NEEDLE SURVEY — BAKER MINE
 ROCKAWAY TOWNSHIP, MORRIS COUNTY, NEW JERSEY

PARCEL NO.	PARCEL AREA	OWNERSHIP	LOCATION	ASSESSMENT		TAX MAPS		REMARKS
				BLDG'S	LAND	BLOCK	LOT	
1	0.3283 AC	MT HOPE MINERAL R.R.	BORO OF WHARTON					
2	24.6113 AC	WARREN FOUNDRY & PIPE CORP	WHARTON & ROCKAWAY					
3	35341.3 F.	NICK BARTKU	BORO OF WHARTON					
4A	10.4342 AC	HENRY O BAKER ETALS	WHARTON & ROCKAWAY					
4B	0.3062 AC	" " & N.V. POWERS LIGHTING	TOWNSHIP OF ROCKAWAY					
4C	21.5527 AC	HENRY O BAKER ETALS	" " "	100	7450			ONE ASSESSMENT FOR 414 ACRES AND ONE HOUSE
4D	0.2627 AC	" OR EDWARD WILLIS	" " "					
5	1.8262 AC	HENRY O BAKER ET ALS	" " "					
6	0.1442 AC	FRANK ERNEST WELLINGTON	" " "	800	150			(ERNEST WELLINGTON) 20 ACRES
7	4.6692 AC	EDWARD WILLIS	" " "	200	450			
8A	4.4612 AC	HETTIE M. PAPPE EST.	" " "					ASSESSED TO MRS MARY HOWELL
8B	0.3832 AC	" " "	" " "	600	500			
9A	0.0462 AC	FRANK WILLIS	" " "	1000	350			
9B	4.6722 AC	" " "	" " "					
IX9B	0.0782 AC	" " "	" " "					
10A	0.0952 AC	GEORGE STICKLE EST ET ALS	" " "					
10B	37.6752 AC	" " "	" " "		2300			128 ACRES
10C	0.2732 AC	" " "	" " "					
10D	0.2762 AC	" " "	" " "					
11	1.6012 AC	JOHN BURT	" " "	100	450			20 ACRES
12	0.0022 AC	OWNER UNKNOWN	" " "					
13	1.5152 AC	VINCENT VITALE ANTHONY MAURIELLO	" " "	600	800			24 ACRES NOT LISTED
14	0.1842 AC	JOSEPH M JACKSON EST.	" " "					
E 15	0.5582 AC	THOMAS HARRY HOWELL	" " "	1200	100			
E 8A	0.0172 AC	HETTIE M. PAPPE EST.	" " "					
E 9A	0.6412 AC	FRANK A. WILLIS	" " "					
2X9B	0.0012 AC	" " "	" " "					

NO COMPLETE AND APPROVED TAX MAPS FOR TOWNSHIP OF ROCKAWAY

Scale: 1" = 600'



EXPLANATORY.

- ④ = STATE HIGHWAY PARCEL NO.
 - A-7 = BOOK NO. OF DEED
 - 106 = PAGE NO. OF DEED
 - DA-7602AC = TOTAL DEED AREA
 - TR-4 = TRACT NO. AS INDICATED IN DEED
- NORTH POINT IS BASED ON STATE HIGHWAY BEARINGS
 BEARINGS AND DISTANCES ALONG PROPERTY LINES HAVE BEEN COPIED FROM DEEDS AND ARE NOT IN THE SAME SYSTEM AS STATE HIGHWAY BEARINGS.
- FOR DETAILS AS TO SLOPES, DRAINAGE, STREAM RELOCATION AND OTHER CONSTRUCTION ITEMS NECESSITATING EASEMENTS SEE GENERAL PROPERTY KEY MAP OR CONSTRUCTION PLANS ALSO SEE SAME FOR MORE CLEAR AND DETAILED DRAWINGS OF BUILDINGS AND OTHER IMPROVEMENTS.
- (DA-5075AC) DOES NOT REPRESENT AREA OF PRESENT ENTIRE PROPERTY SINCE IT INCLUDES AREAS OF EXCEPTIONS OR SUBSEQUENT CONVEYANCES.
- A.R.&(N) = REMAINING AREA AS SCALED NORTH.
 A.R.&(S) = REMAINING AREA AS SCALED SOUTH.

PRELIMINARY
 NOT CHECKED
 PRINTED 12-27-45

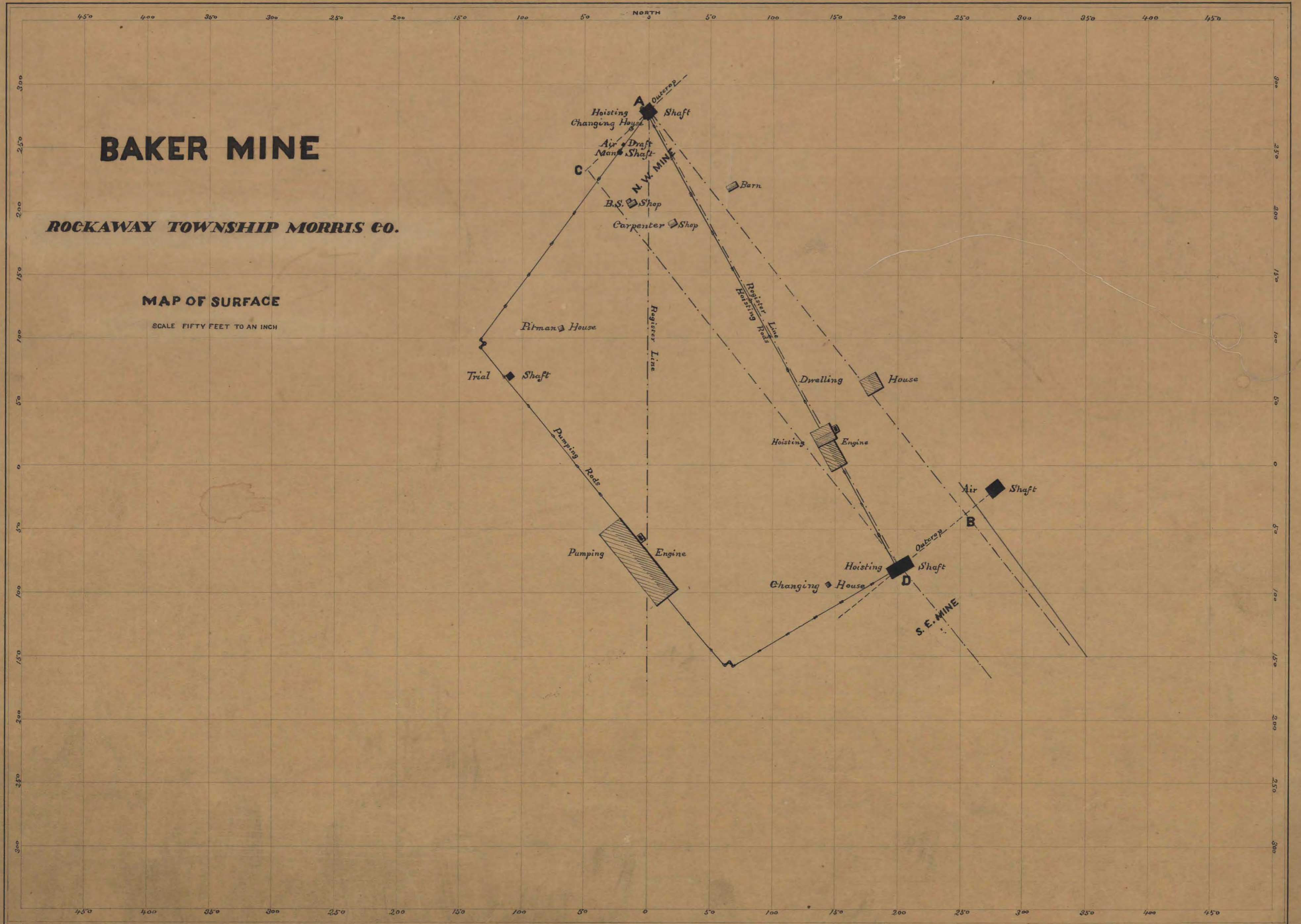
NEW JERSEY
 STATE HIGHWAY DEPARTMENT
GENERAL ENTIRE TRACT MAP
 ROUTE-6 (1927) RELOCATION SECTION-24
 SPICERTOWN
 TO
 MT HOPE - ROCKAWAY ROAD
 SHOWING PARTICULARLY, EACH PARCEL IN RELATION TO THE ENTIRE PROPERTY OF WHICH IT FORMS A PART
 BOROUGH OF WHARTON & TWP OF ROCKAWAY COUNTY OF MORRIS
 SCALES AS SHOWN DEC. 1943

BAKER MINE

ROCKAWAY TOWNSHIP MORRIS CO.

MAP OF SURFACE

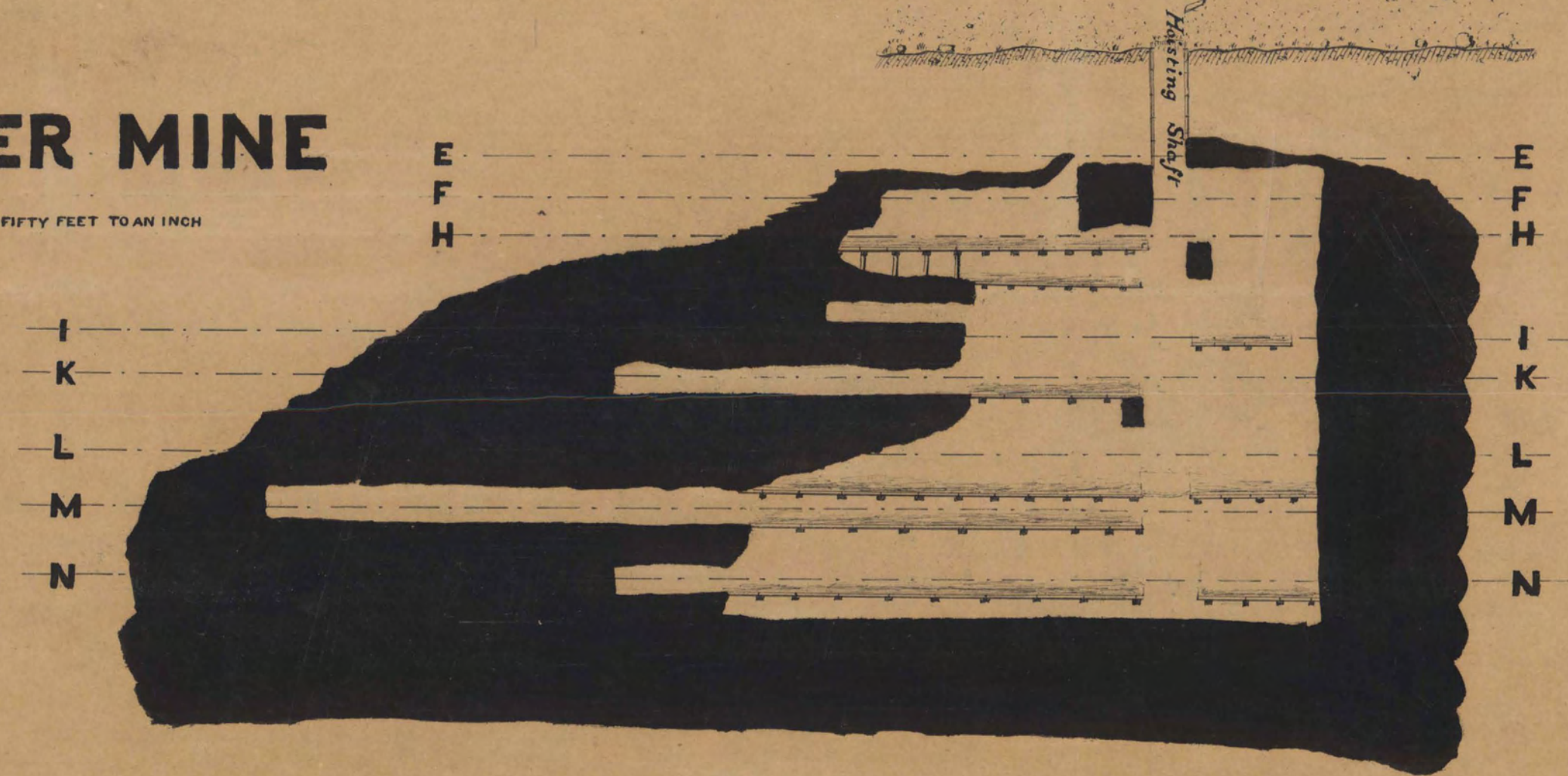
SCALE FIFTY FEET TO AN INCH



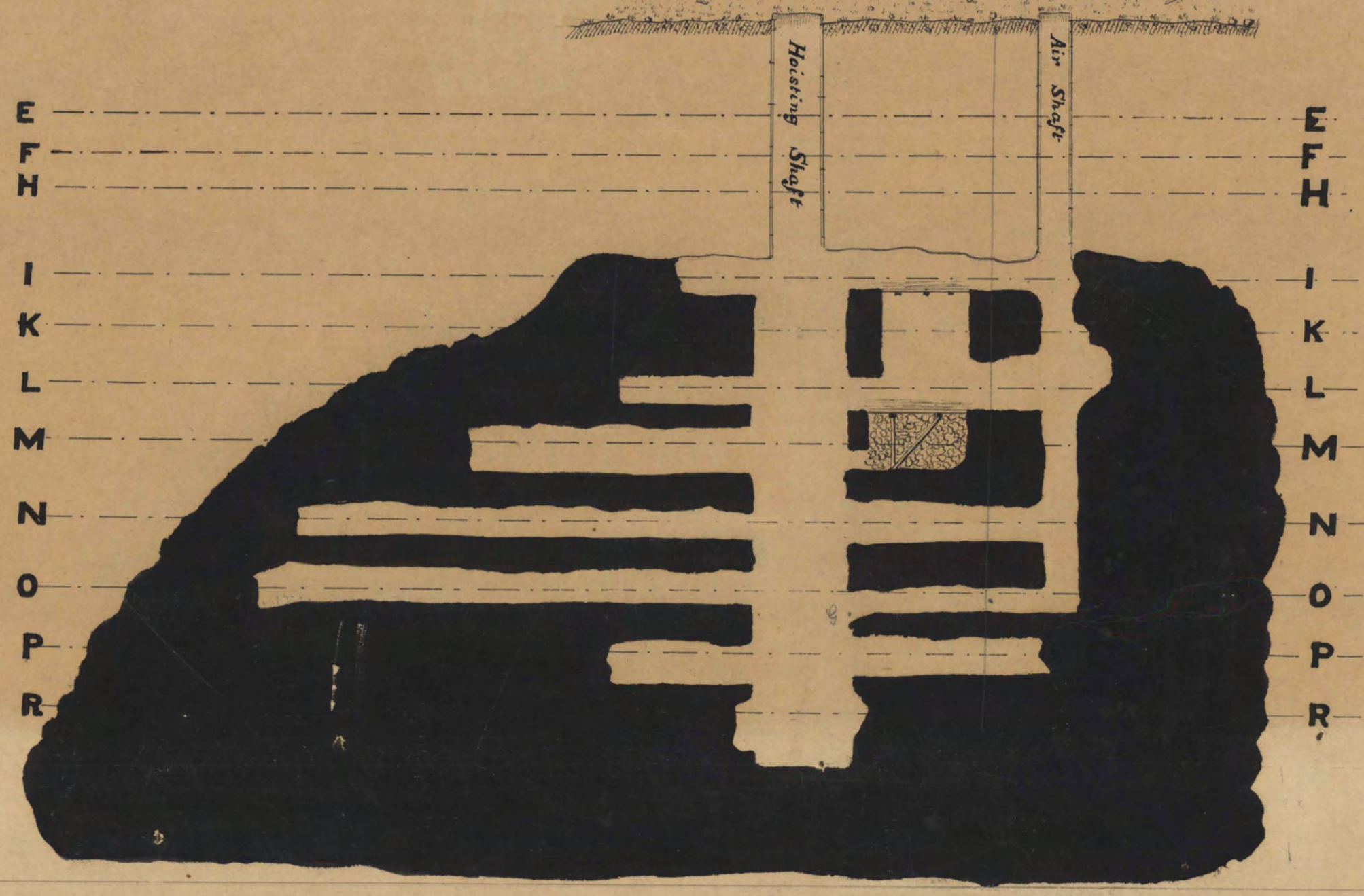
BAKER MINE

SCALE FIFTY FEET TO AN INCH

LONGITUDINAL SECTION ON DIP, N.W. MINE



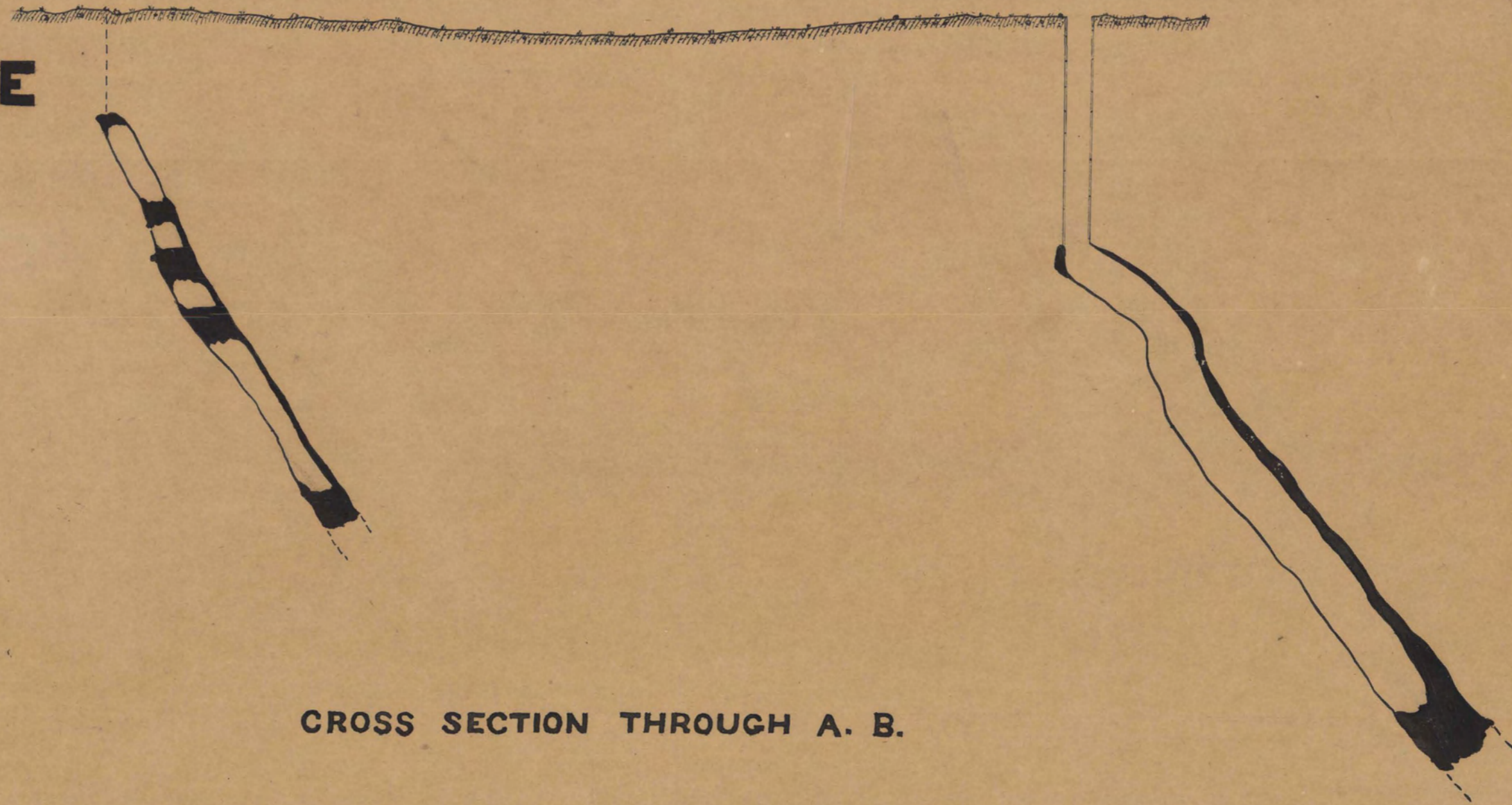
LONGITUDINAL SECTION ON DIP, S.E. MINE



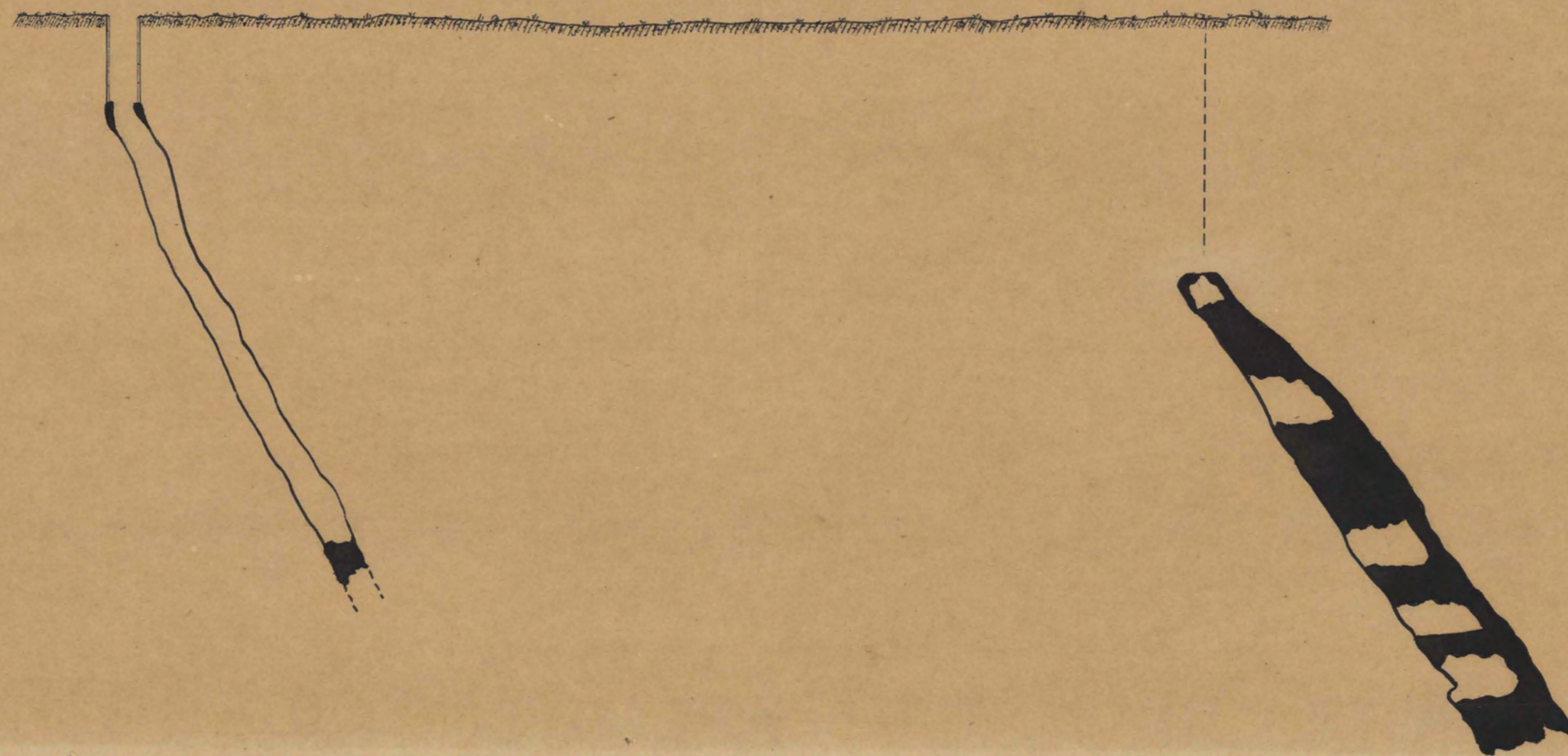
BAKER MINE

SCALE FIFTY FEET TO AN INCH

CROSS SECTION THROUGH C. D.



CROSS SECTION THROUGH A. B.

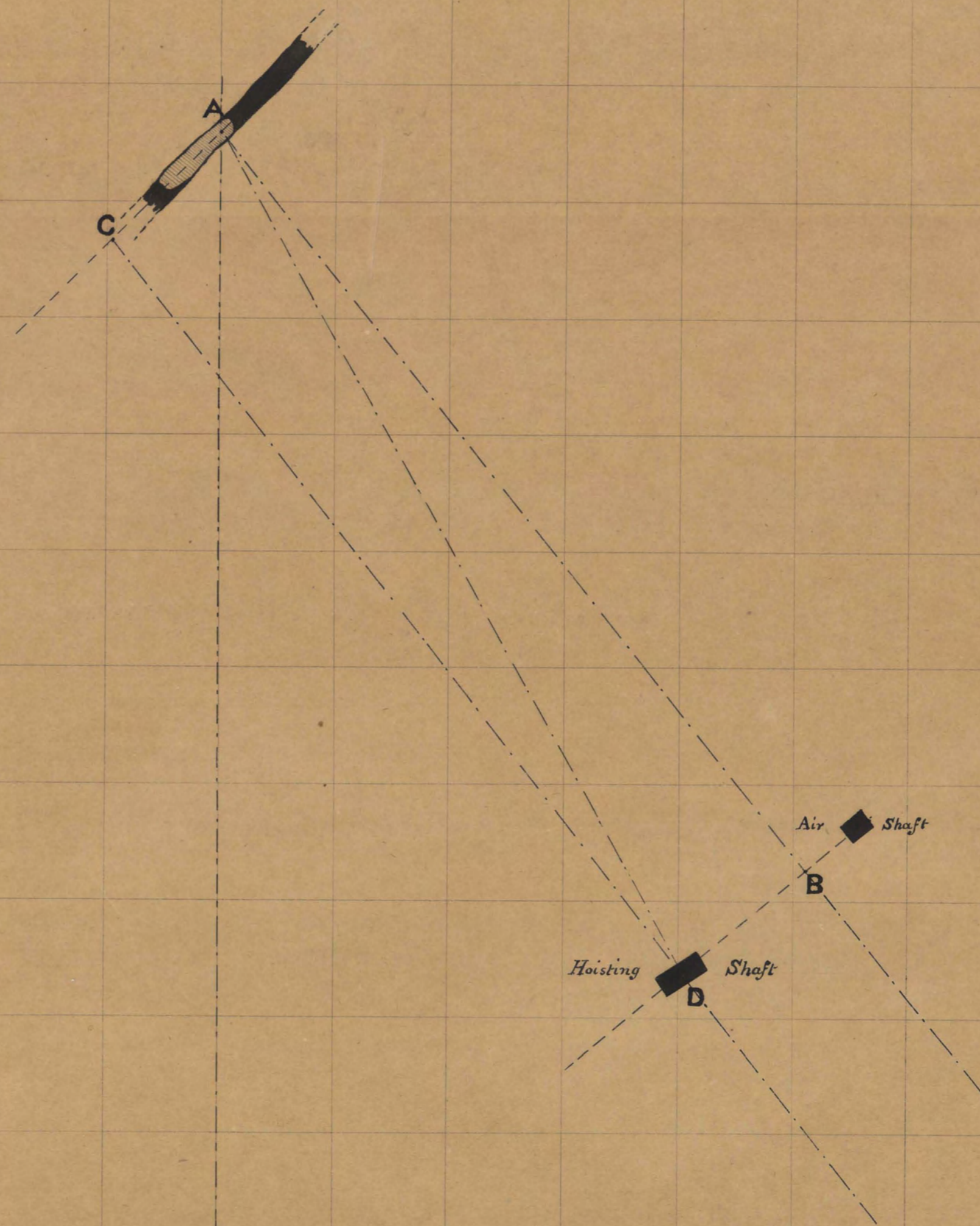


*B. G. Blake
52 Wall St.
N.Y.*

BAKER MINE

HORIZONTAL SECTION THROUGH E. E.
Thirty Five Feet Below Surface Over A

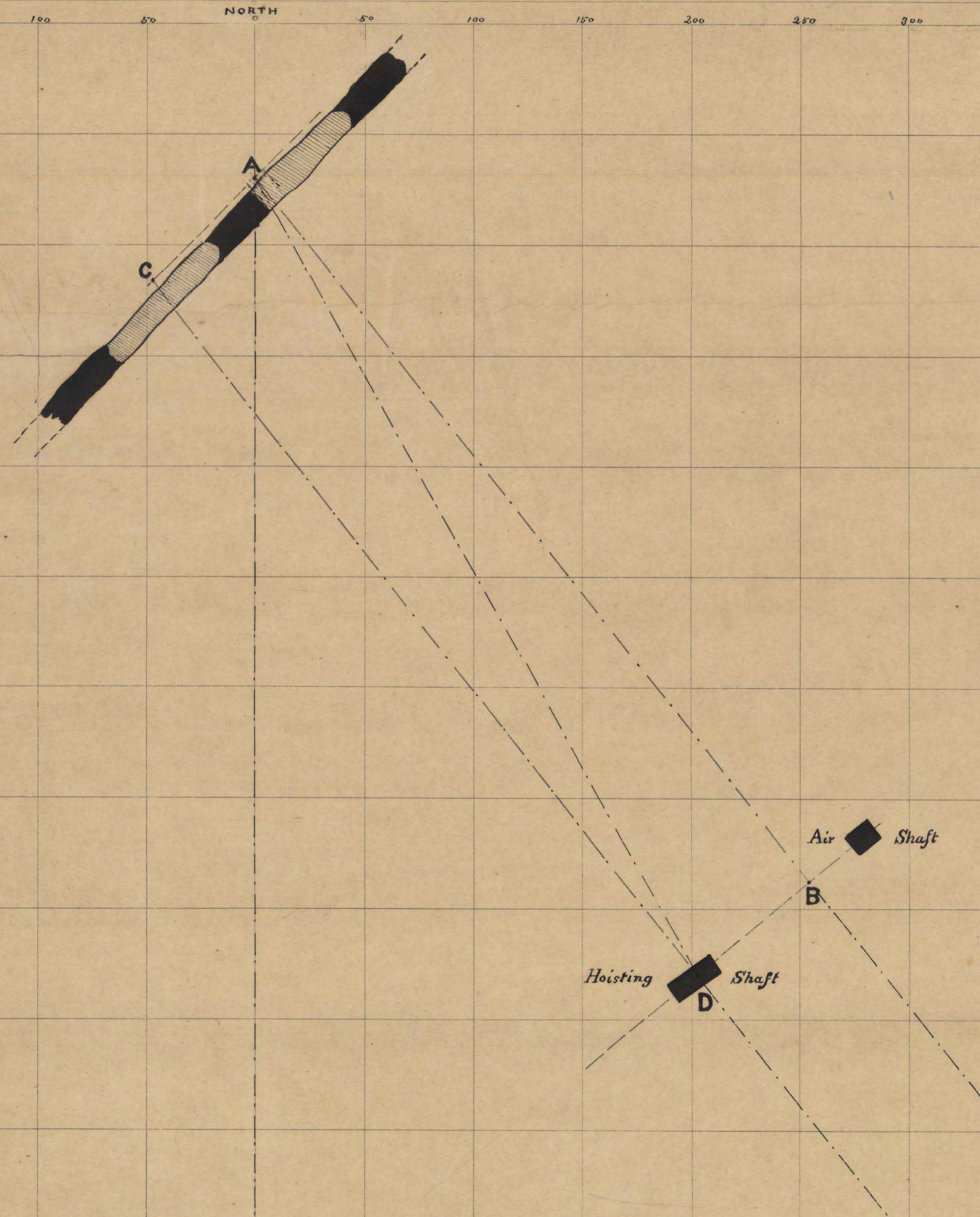
SCALE FIFTY FEET TO AN INCH



BAKER MINE

HORIZONTAL SECTION THROUGH F. F. *Fifty Feet Below Surface Over A*

SCALE FIFTY FEET TO AN INCH

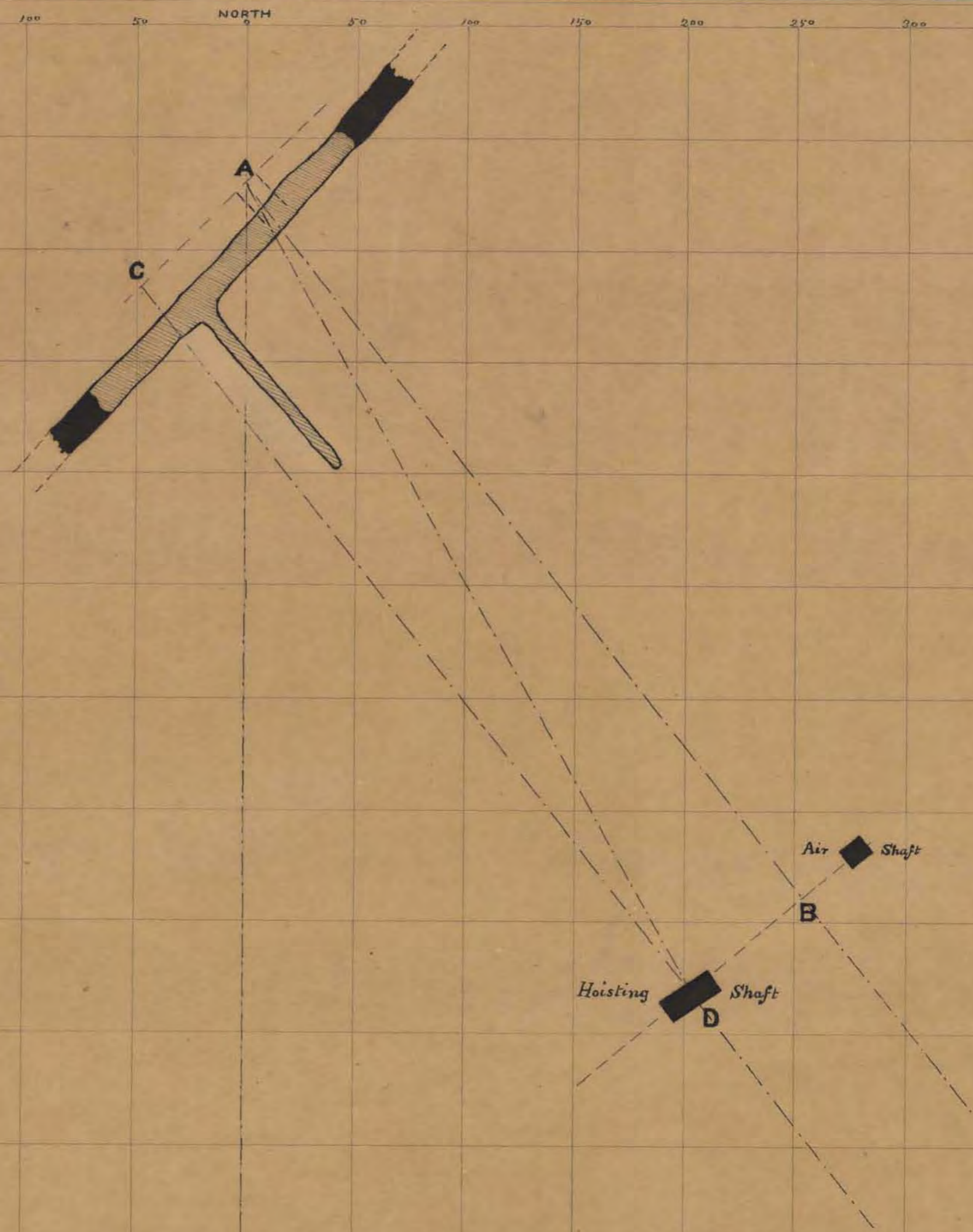


7 plus 14

BAKER MINE

HORIZONTAL SECTION THROUGH H. H.
Sixty Four Feet Below Surface Over A

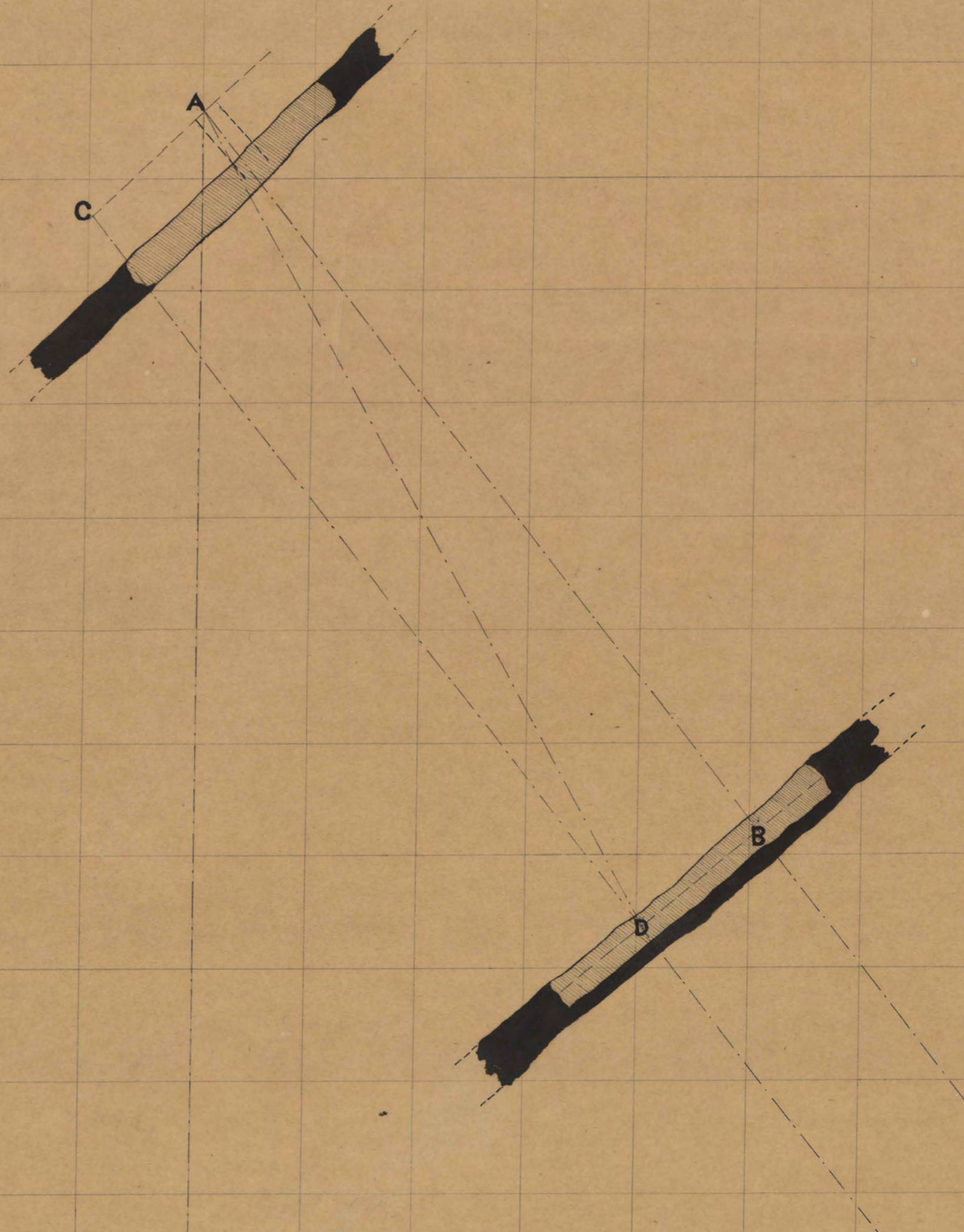
SCALE FIFTY FEET TO AN INCH



BAKER MINE

HORIZONTAL SECTION THROUGH I. I.
One Hundred Feet Below Surface Over A

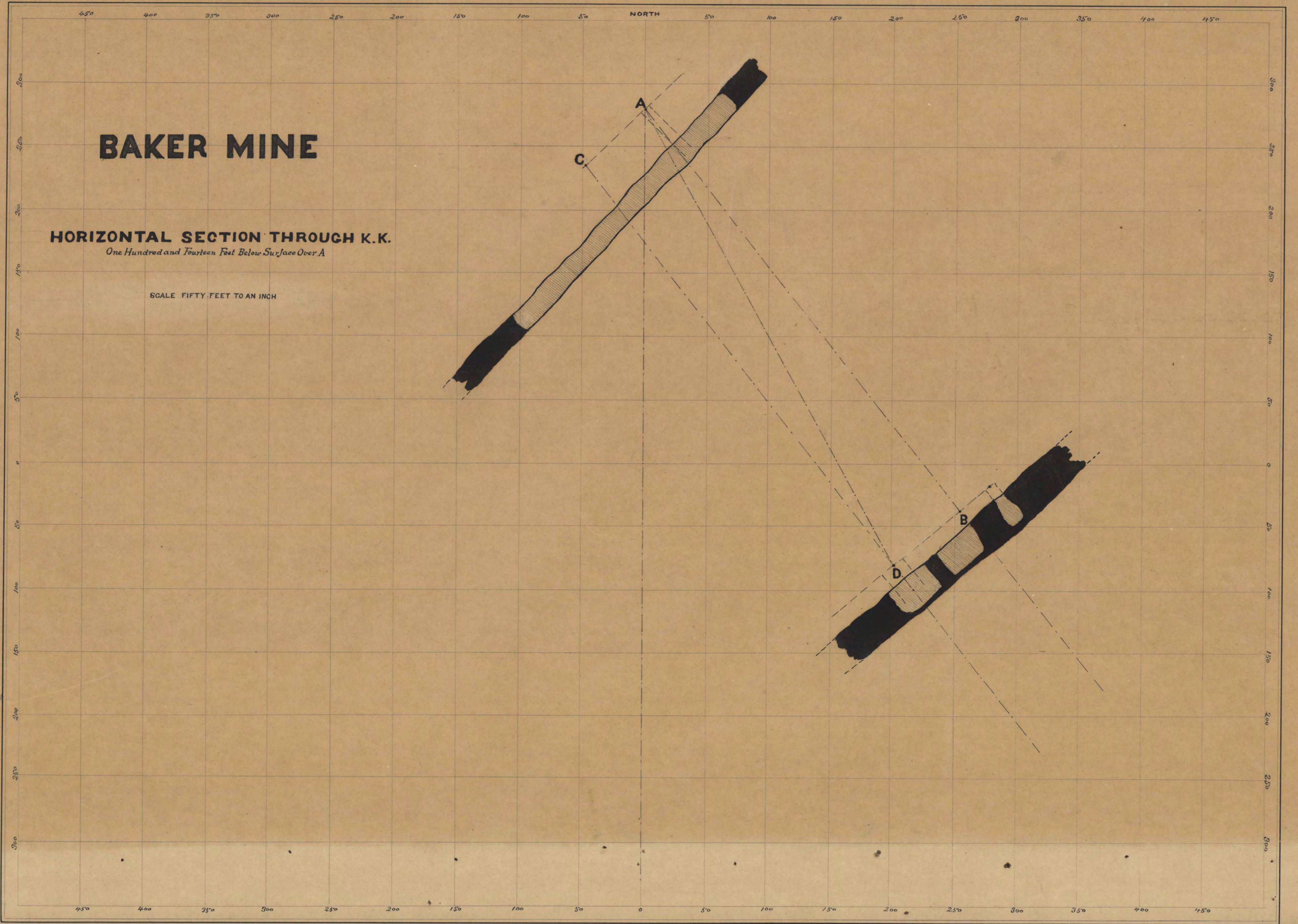
SCALE FIFTY FEET TO INCH



BAKER MINE

HORIZONTAL SECTION THROUGH K.K. *One Hundred and Fourteen Feet Below Surface Over A*

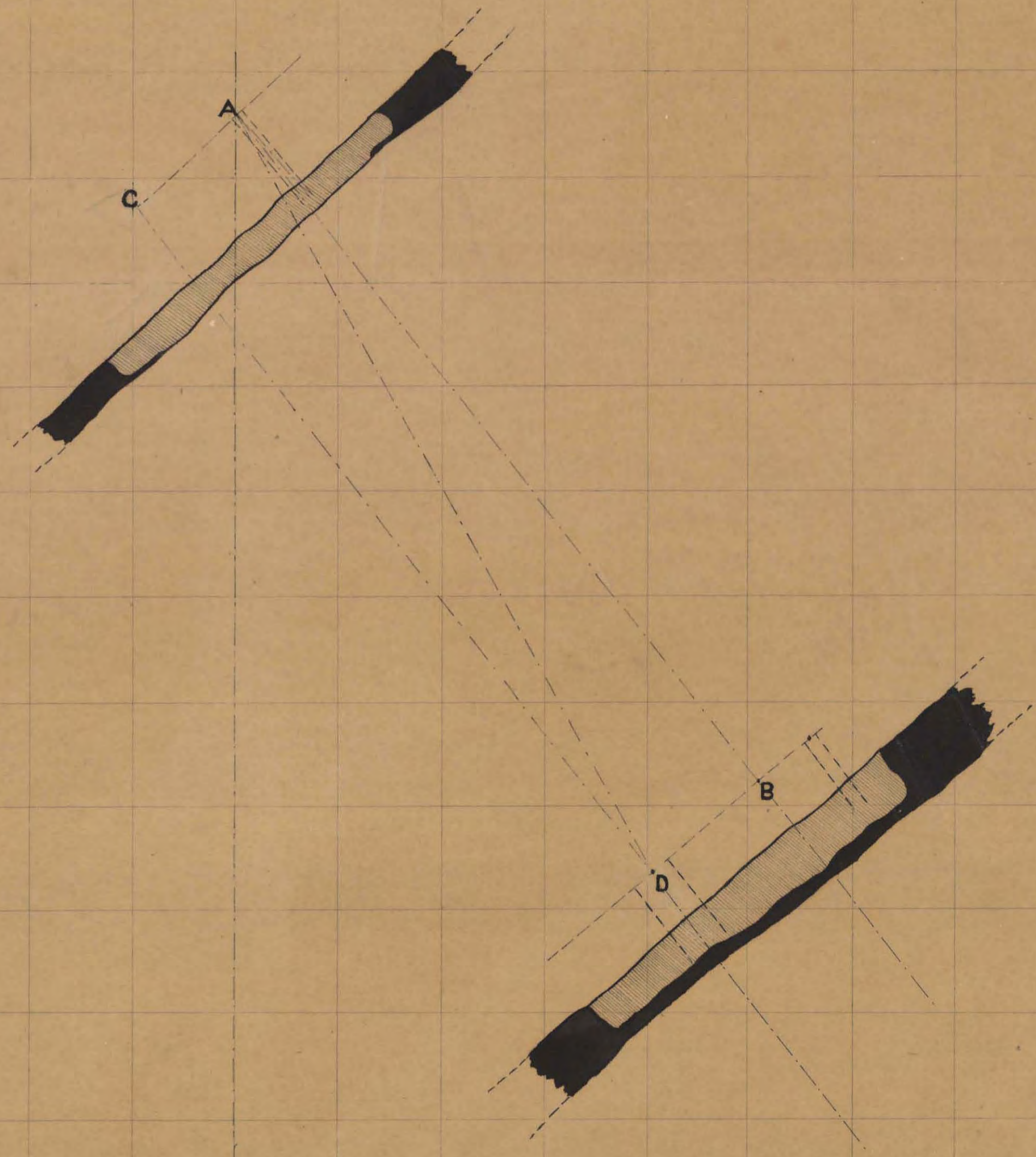
SCALE FIFTY FEET TO AN INCH



BAKER MINE

HORIZONTAL SECTION THROUGH L.L. *One Hundred and Thirty Feet Below Surface Over A*

SCALE FIFTY FEET TO AN INCH

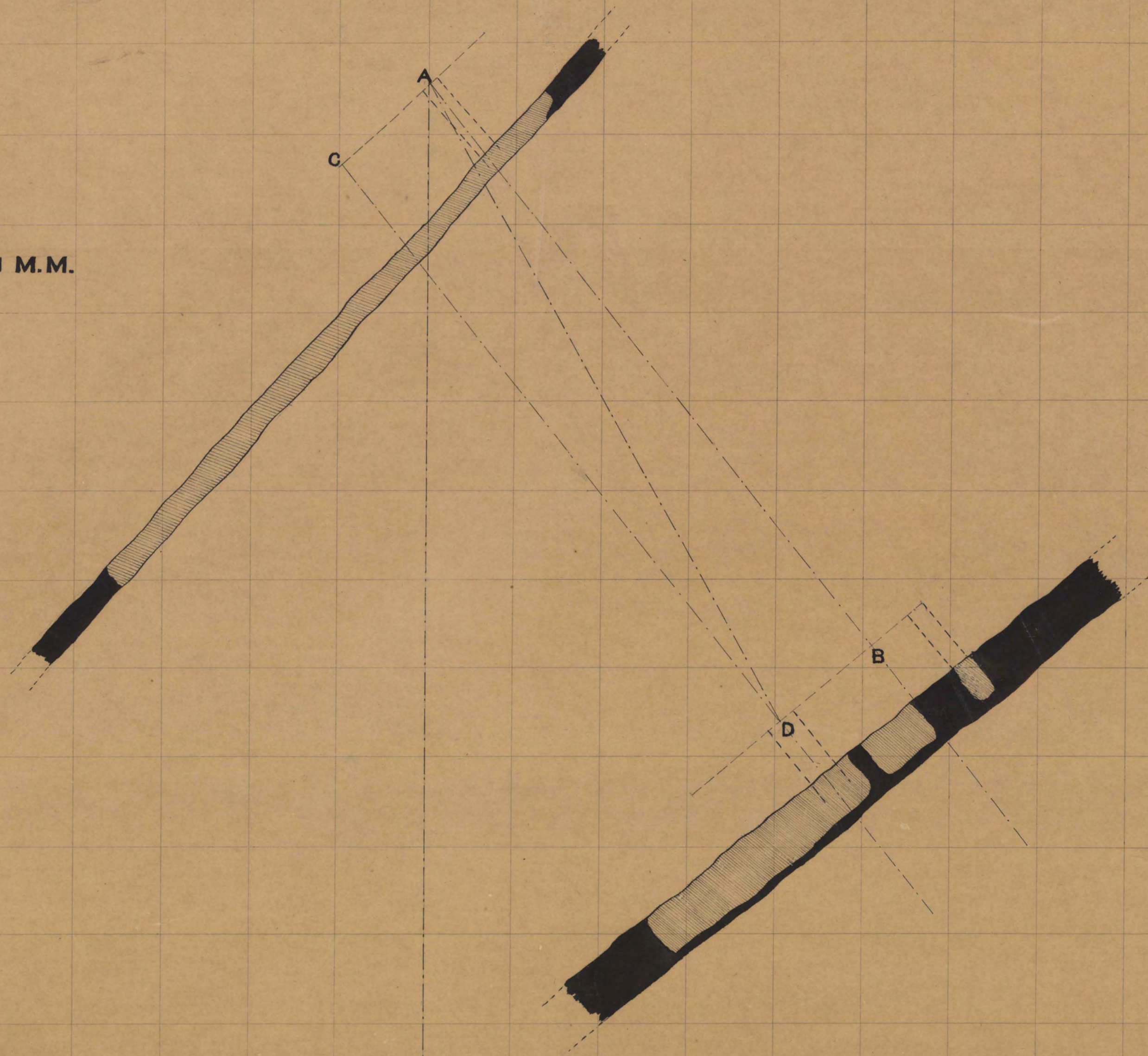


BAKER MINE

HORIZONTAL SECTION THROUGH M.M.

One Hundred and Forty Five Feet Below Surface Over A

SCALE FIFTY FEET TO AN INCH

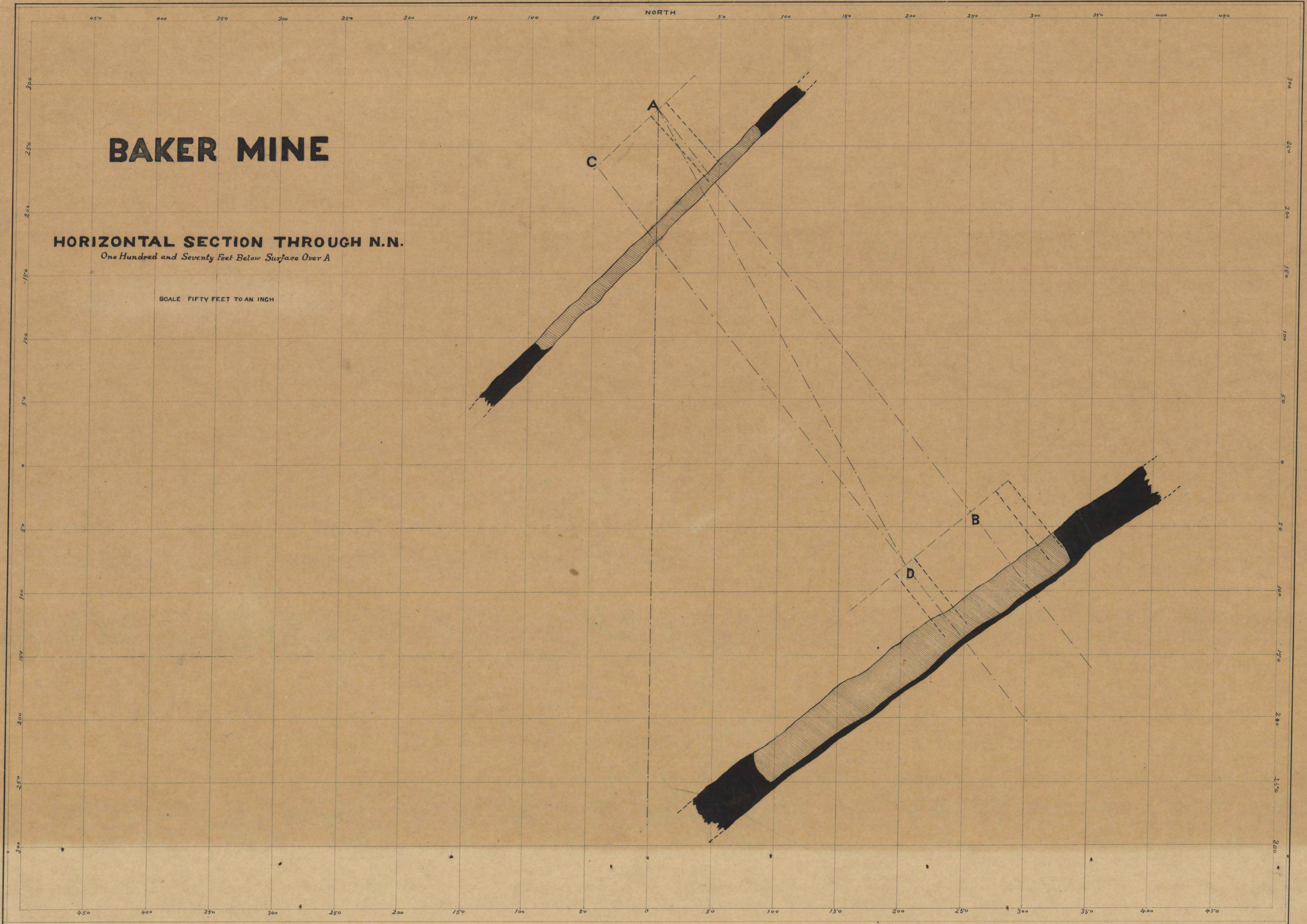


BAKER MINE

HORIZONTAL SECTION THROUGH N.N.

One Hundred and Seventy Feet Below Surface Over A

SCALE FIFTY FEET TO AN INCH

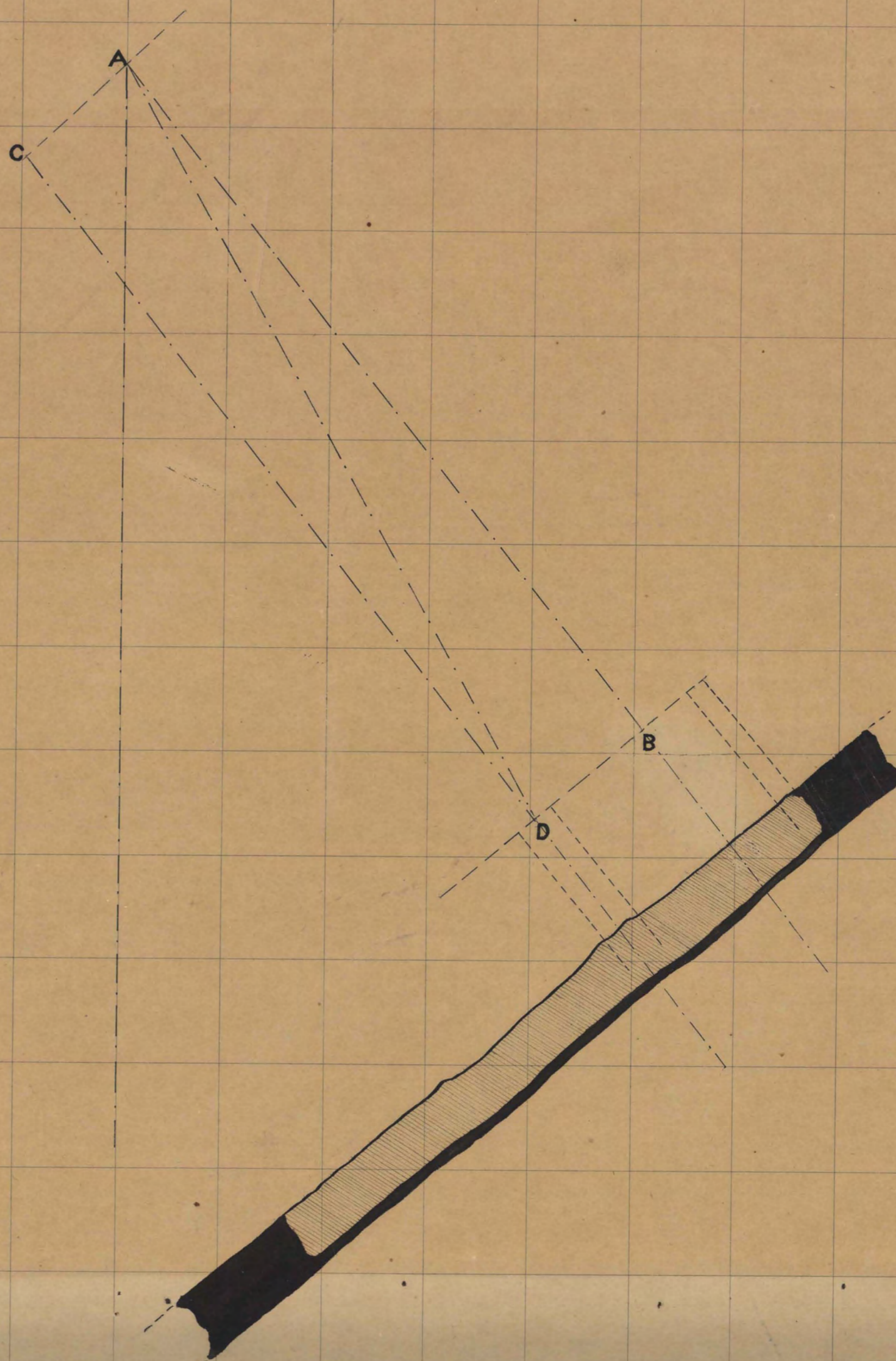


BAKER MINE

HORIZONTAL SECTION THROUGH O.O.

One Hundred and Ninety Feet Below Surface Over A

SCALE FIFTY FEET TO AN INCH

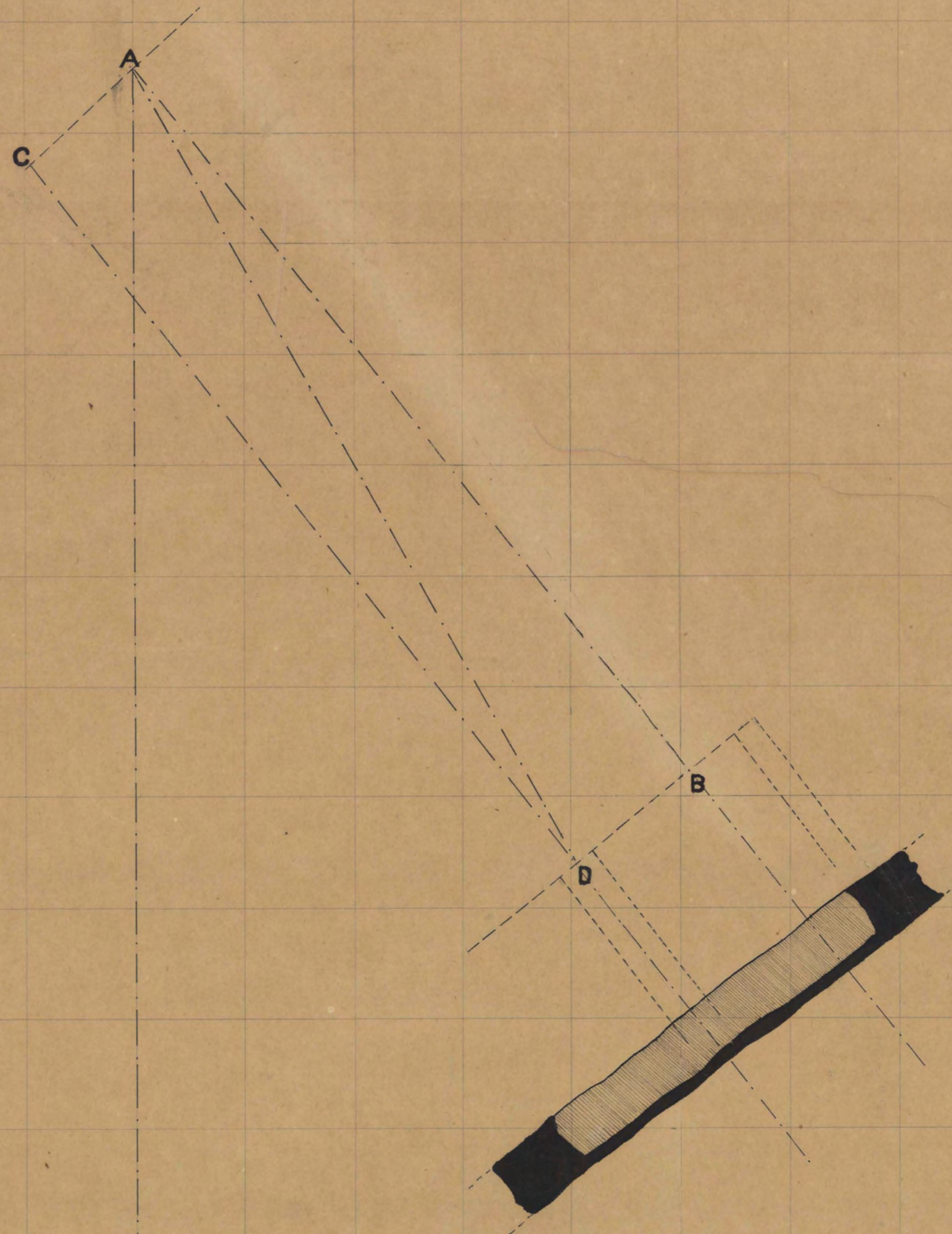


BAKER MINE

HORIZONTAL SECTION THROUGH P.P.

Two Hundred and Ten Feet Below Surface Over A

SCALE FIFTY FEET TO AN INCH

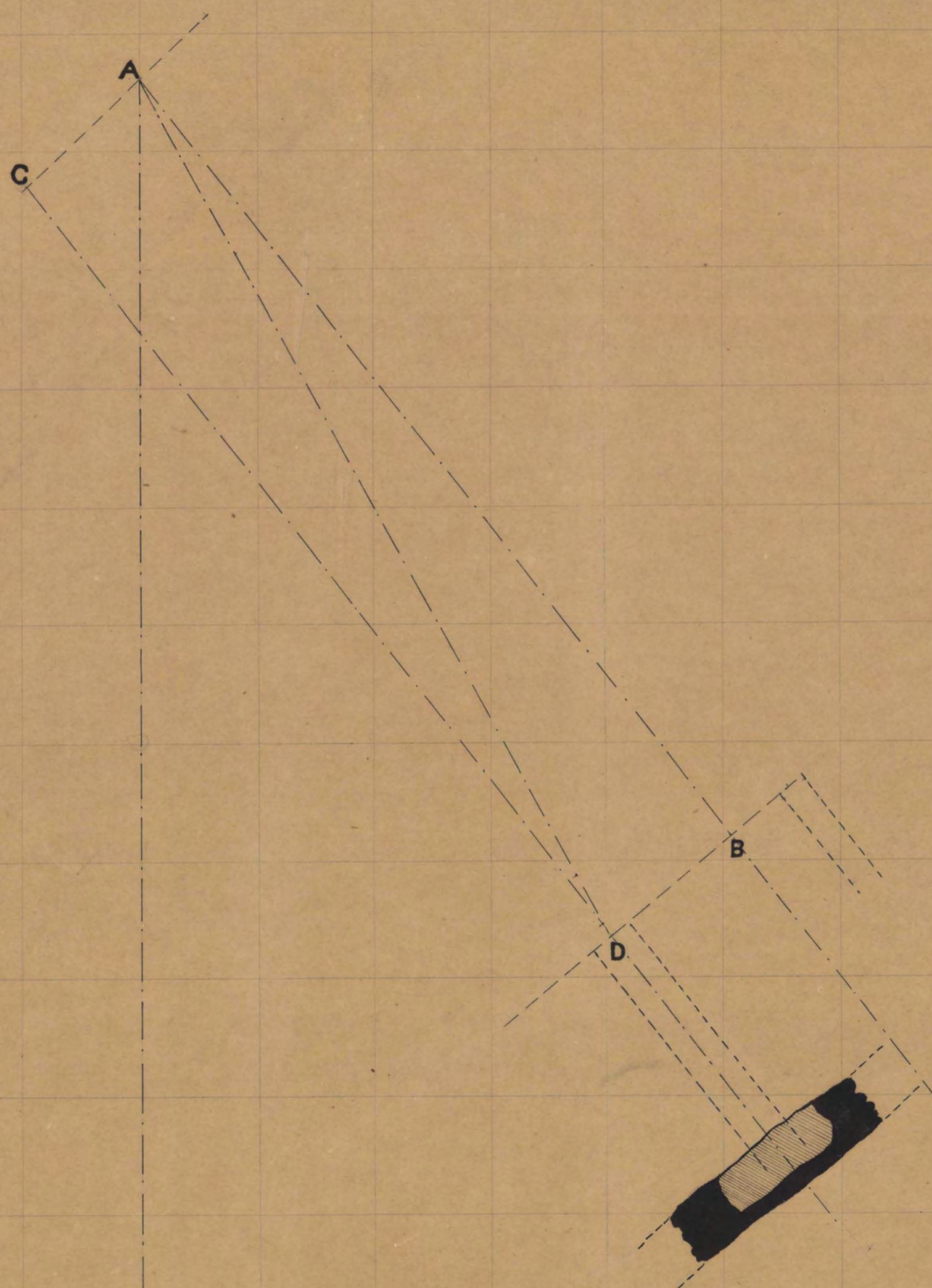


BAKER MINE

HORIZONTAL SECTION THROUGH R.R.

Two Hundred and Thirty Five Feet Below Surface Over A

SCALE FIFTY FEET TO AN INCH



MAP OF THE
BAKER MINE

1876

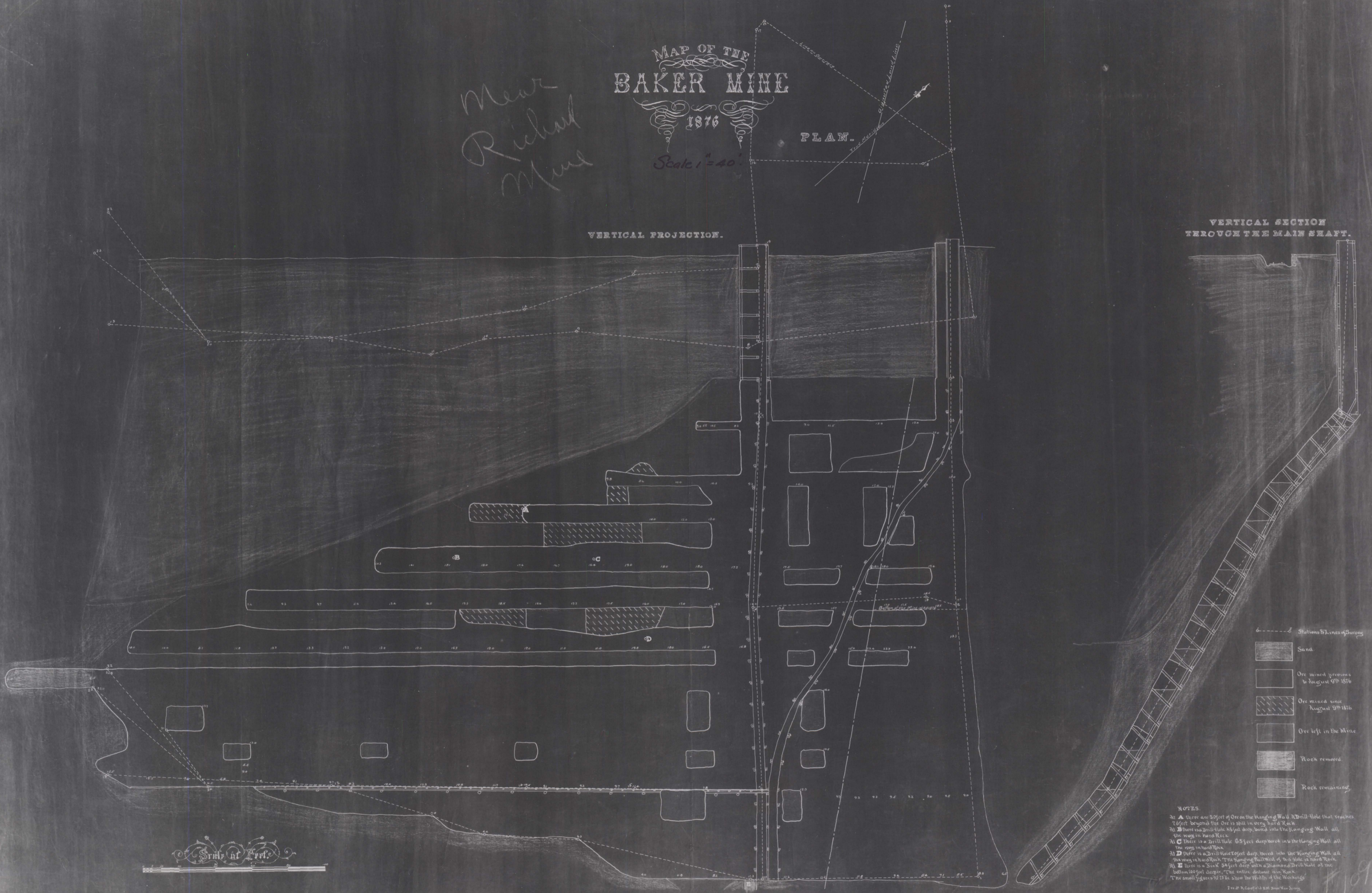
Scale 1" = 40'

*near
Richard
Mine*

PLAN.

VERTICAL PROJECTION.

VERTICAL SECTION
THROUGH THE MAIN SHAFT.



- Stations & Lines of Survey
- ▨ Sand
- ▤ Ore mined previous to August 9th 1876
- ▧ Ore mined since August 9th 1876
- ▥ Ore left in the Mine
- ▩ Rock removed
- Rock remaining

NOTES.

At A there are 50 feet of Ore on the Hanging Wall & Drill Hole that reaches 75 feet beyond but Ore is still in Ore, hard Rock

At B there is a Drill Hole 65 feet deep, bored into the Hanging Wall all the way in hard Rock

At C there is a Drill Hole 65 feet deep, bored into the Hanging Wall all the way in hard Rock

At D there is a Drill Hole 65 feet deep, bored into the Hanging Wall all the way in hard Rock The Hanging Wall West of this Hole is hard Rock

At E there is a Sink 5 feet deep with a Diamond Drill Hole at the bottom 100 feet deep, the entire distance from Rock

The small figures 22, 23 to show the Width of the Workings

Dec 20. R. Confield & Son. New York

Smith & Puff.