



State of New Jersey
Department of Environmental Protection
Geological Survey

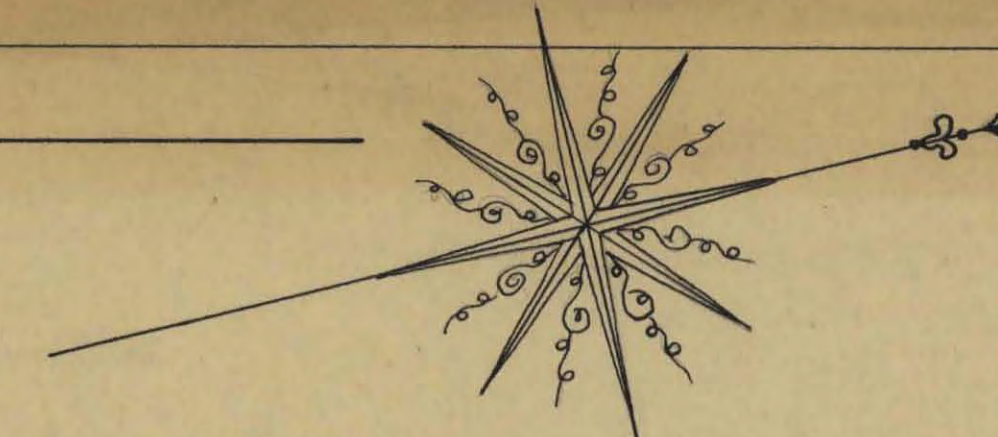


Information Disclaimer

The State of New Jersey makes great effort to provide secure, accurate and complete information. However, portions of the information contained here may be incorrect or not current.

The State of New Jersey, its officers, employees or agents shall not be liable for damages or losses of any kind arising out of or in connection with the use or performance of information, including but not limited to, damages or losses caused by reliance upon the accuracy or timeliness of any such information, or damages incurred from the viewing, distributing, or copying of those materials.

The materials and information provided here are provided "as is." No warranty of any kind, implied, expressed, or statutory, including but not limited to the warranties of non-infringement of third party rights, title, merchantability, fitness for a particular purpose, and freedom from computer virus, is given with respect to the contents of this document.



Map of a Part of Franklin Hill
 1884
 Fred A. Confield E.M. Dover N.J.
 Red lines represent fences

DATE: 1884	SCALE: 1" = 100'
MAP OF A PART OF FRANKLIN HILL	
DRAWN: FRED A. CONFIELD	7-AB-2009.
TRACED: A.W. PHOENIX	



PARKER LEASE

PARKER LEASE

MINE HILL R.R.

The New Jersey Zinc Co.

PUBLIC ROAD

PARKER LEASE

EASTERN LIMIT OF ORE BODY

MINE HILL TRACT

Peter Cummings Est.

Peter Cummings Est.

Peter Cummings Est.

William Smith

Patrick Quinn Est.

P. Nestor

BORO HALL LOT 1918

William Smith

Alex Leane

P. Quinn Est.

Patrick Nestor Est.

William Lacey

Mathew Flood Est.

Hyde Est.

450

450

N.J.Z. Co.

N.J.Z. Co.

N.J.Z. Co.

N.J.Z. Co.

N.J.Z. Co.

N.J.Z. Co.

N.J.Z. Co.

N.J.Z. Co.

N.J.Z. Co.

N.J.Z. Co.

N.J.Z. Co.

N.J.Z. Co.

N.J.Z. Co.

N.J.Z. Co.

N.J.Z. Co.

N.J.Z. Co.

N.J.Z. Co.

N.J.Z. Co.

N.J.Z. Co.

N.J.Z. Co.

N.J.Z. Co.

HAMBURG AVENUE

HAMBURG AVENUE

HAMBURG AVENUE

HAMBURG AVENUE

HAMBURG AVENUE

HAMBURG AVENUE

HAMBURG AVENUE

HAMBURG AVENUE

LA RUE STREET

LA RUE STREET

LA RUE STREET

LA RUE STREET

LA RUE STREET

LA RUE STREET

LA RUE STREET

LA RUE STREET

N. J. Z. Co.

N. J. Z. Co.

N. J. Z. Co.

N. J. Z. Co.

N. J. Z. Co.

N. J. Z. Co.

N. J. Z. Co.

N. J. Z. Co.

N. J. Z. Co.

N. J. Z. Co.

N. J. Z. Co.

N. J. Z. Co.

N. J. Z. Co.

N. J. Z. Co.

N. J. Z. Co.

N. J. Z. Co.

N. J. Z. Co.

N. J. Z. Co.

N. J. Z. Co.

N. J. Z. Co.

N. J. Z. Co.

Lester Page

N. J. Z. Co.

N. J. Z. Co.

N. J. Z. Co.

N. J. Z. Co.

N. J. Z. Co.

N. J. Z. Co.

N. J. Z. Co.

N. J. Z. Co.

N. J. Z. Co.

N. J. Z. Co.

N. J. Z. Co.

N. J. Z. Co.

N. J. Z. Co.

N. J. Z. Co.

N. J. Z. Co.

N. J. Z. Co.

N. J. Z. Co.

N. J. Z. Co.

N. J. Z. Co.

N. J. Z. Co.

Trank Mathew

N. J. Z. Co.

N. J. Z. Co.

N. J. Z. Co.

N. J. Z. Co.

N. J. Z. Co.

N. J. Z. Co.

N. J. Z. Co.

N. J. Z. Co.

N. J. Z. Co.

N. J. Z. Co.

N. J. Z. Co.

N. J. Z. Co.

N. J. Z. Co.

N. J. Z. Co.

N. J. Z. Co.

N. J. Z. Co.

N. J. Z. Co.

N. J. Z. Co.

N. J. Z. Co.

N. J. Z. Co.

Public Road

Public Road

Public Road

Public Road

Public Road

Public Road

Public Road

Public Road

Public Road

Public Road

Public Road

Public Road

Public Road

Public Road

Public Road

Public Road

Public Road

Public Road

Public Road

Public Road

Public Road

Public Road

Public Road

Public Road

Public Road

Public Road

Public Road

Public Road

Public Road

Public Road

Public Road

Public Road

Public Road

Public Road

Public Road

Public Road

Public Road

Public Road

Public Road

Public Road

Public Road

Public Road

Public Road

Public Road

Public Road

Public Road

Public Road

Public Road

Public Road

Public Road

Public Road

Public Road

Public Road

Public Road

Public Road

Public Road

Public Road

Public Road

Public Road

Public Road

Public Road

Public Road

Public Road

Public Road

Public Road

Public Road

Public Road

Public Road

Public Road

Public Road

Public Road

Public Road

Public Road

Public Road

Public Road

Public Road

Public Road

Public Road

Public Road

Public Road

Public Road

Public Road

Public Road

Public Road

Public Road

Public Road

Public Road

Public Road

Public Road

Public Road

Public Road

Public Road

Public Road

Public Road

Public Road

Public Road

Public Road

Public Road

Public Road

Public Road

Public Road

Public Road

Public Road

Public Road

Public Road

Public Road

Public Road

Public Road

Public Road

Public Road

Public Road

Public Road

Public Road

Public Road

Public Road

Public Road

Public Road

Public Road

Public Road

Public Road

Public Road

Public Road

Public Road

Public Road

Public Road

Public Road

Public Road

Public Road

Public Road

Public Road

Public Road

Public Road

Public Road

Public Road

Public Road

Public Road

Public Road

Public Road

Public Road

Public Road

Public Road

Public Road

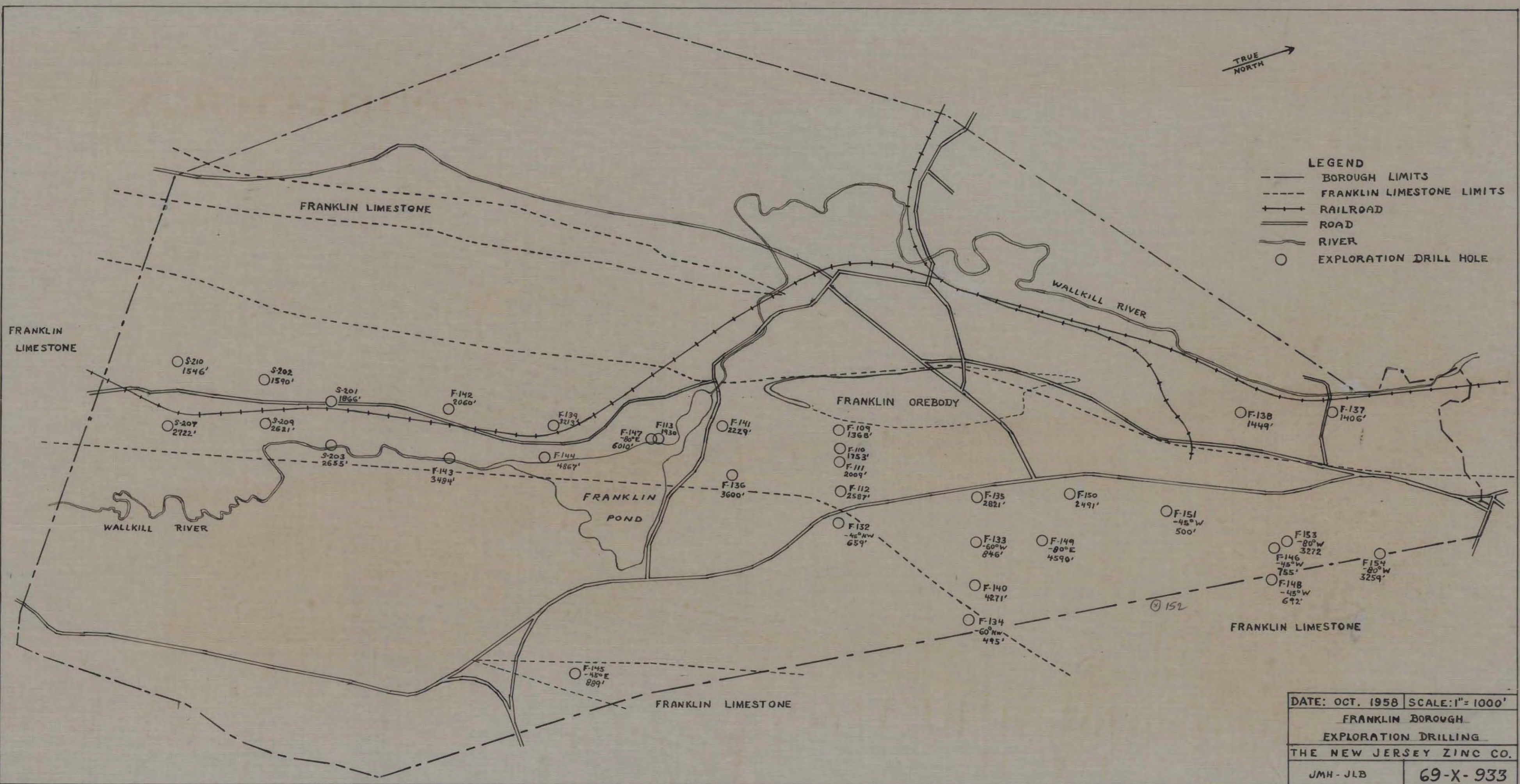
Public Road

Public Road

Public Road

Public Road

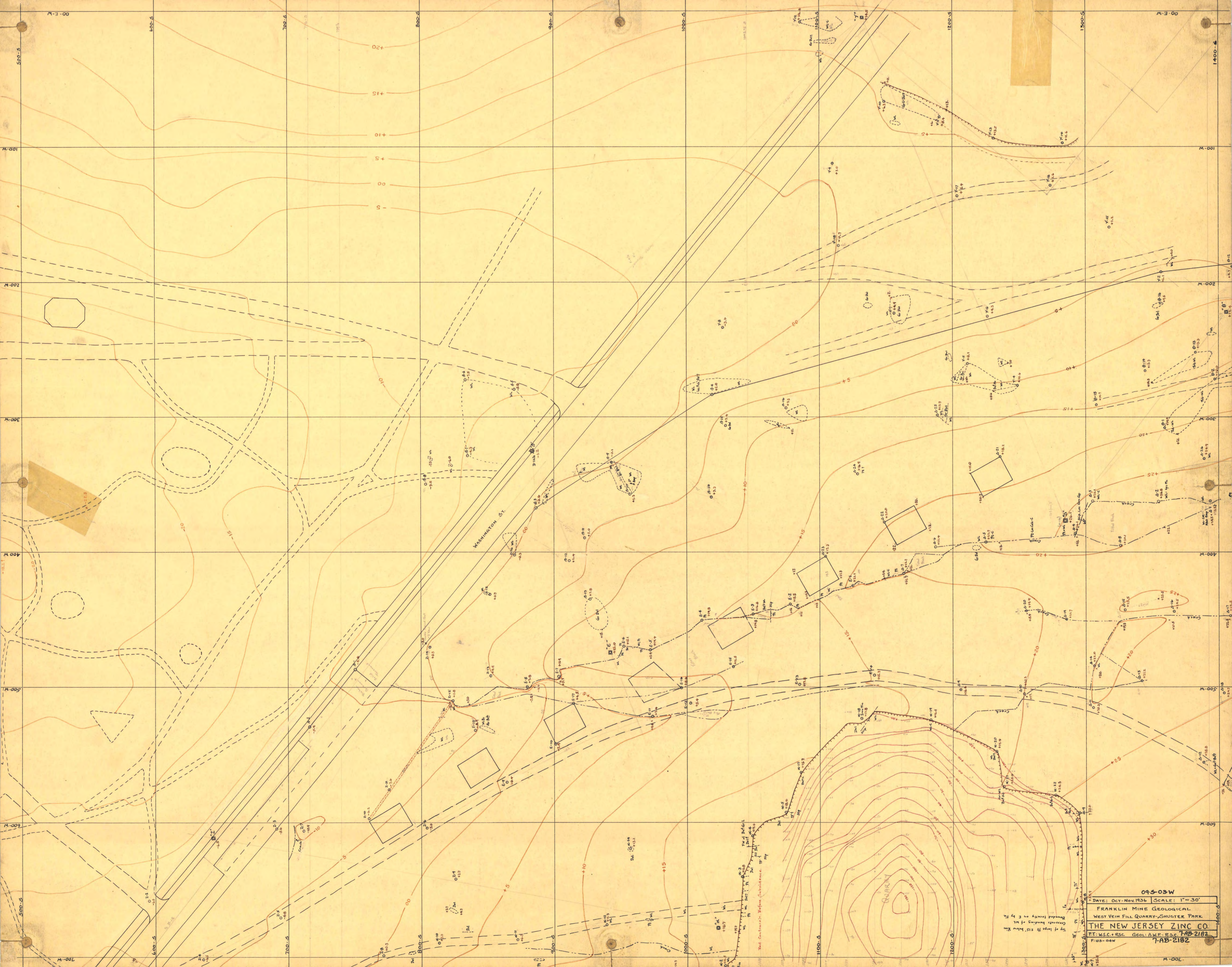
Public Road



DATE: OCT. 1958	SCALE: 1" = 1000'
FRANKLIN BOROUGH	
EXPLORATION DRILLING	
THE NEW JERSEY ZINC CO.	
JMH - JLB	69-X-933

MacMillan
Thomas
Johnson

Shows exploratory drilling on mineral rights properties only,
within the Borough, and drilled by the Company.



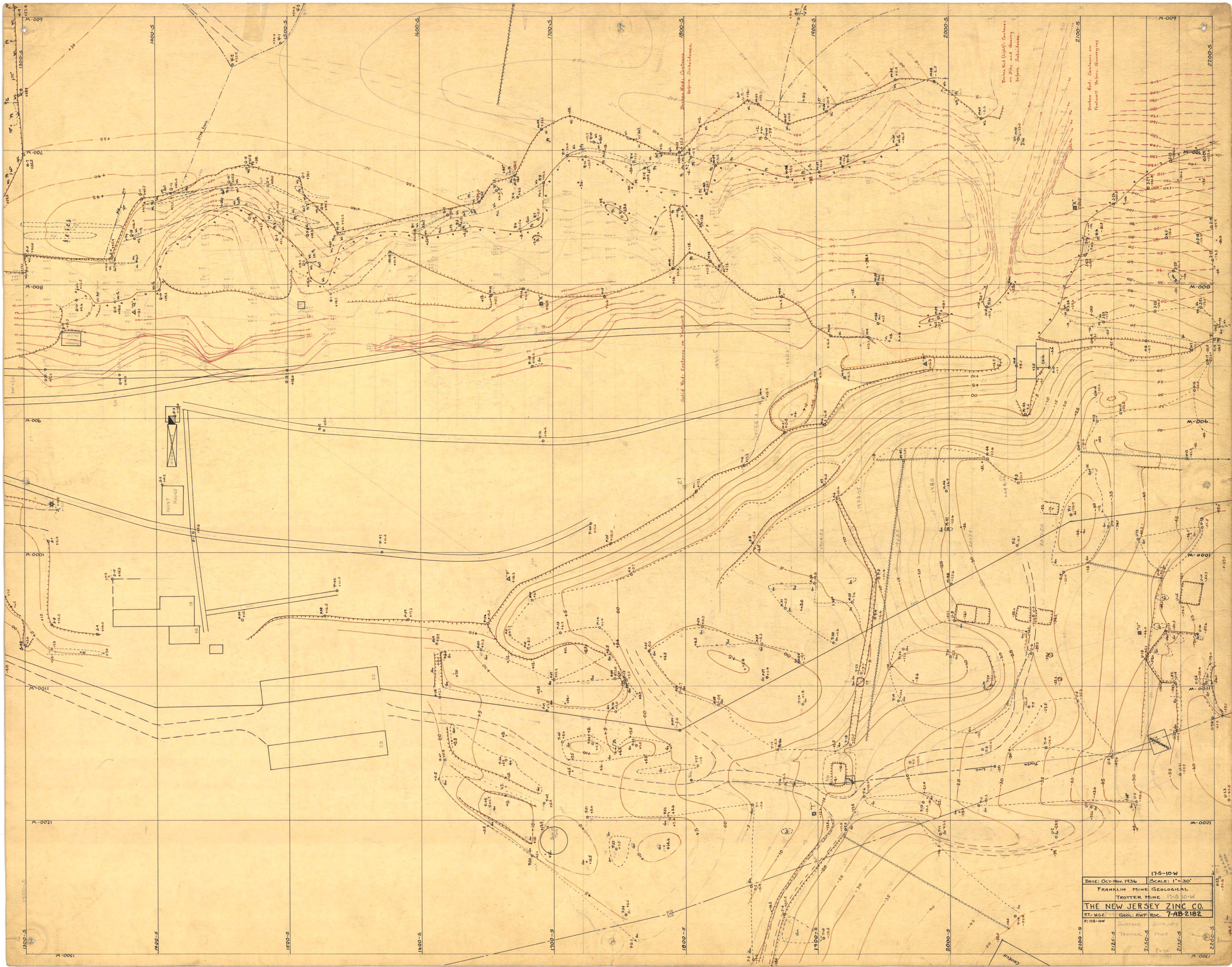
095-03W
DATE: OCT-NOV 1936 SCALE: 1"=30'
FRANKLIN MINE GEOLOGICAL
WEST VEIN FILL QUARRY-SHUSTER PARK
THE NEW JERSEY ZINC CO.
PT: W.S.C. + R.S.C. GEOL: A.M.P. - R.S.C. 7-AB-2182
FIGS-04W 7-AB-2182

Top of large Pt. 215' below Km
Boundaries boundary on E by Pt.

Red Contours: Before Subsidence

WASHINGTON ST.

QUARRY



Broken Red (Light) Contours on Dike and Quarry before Subsidence.

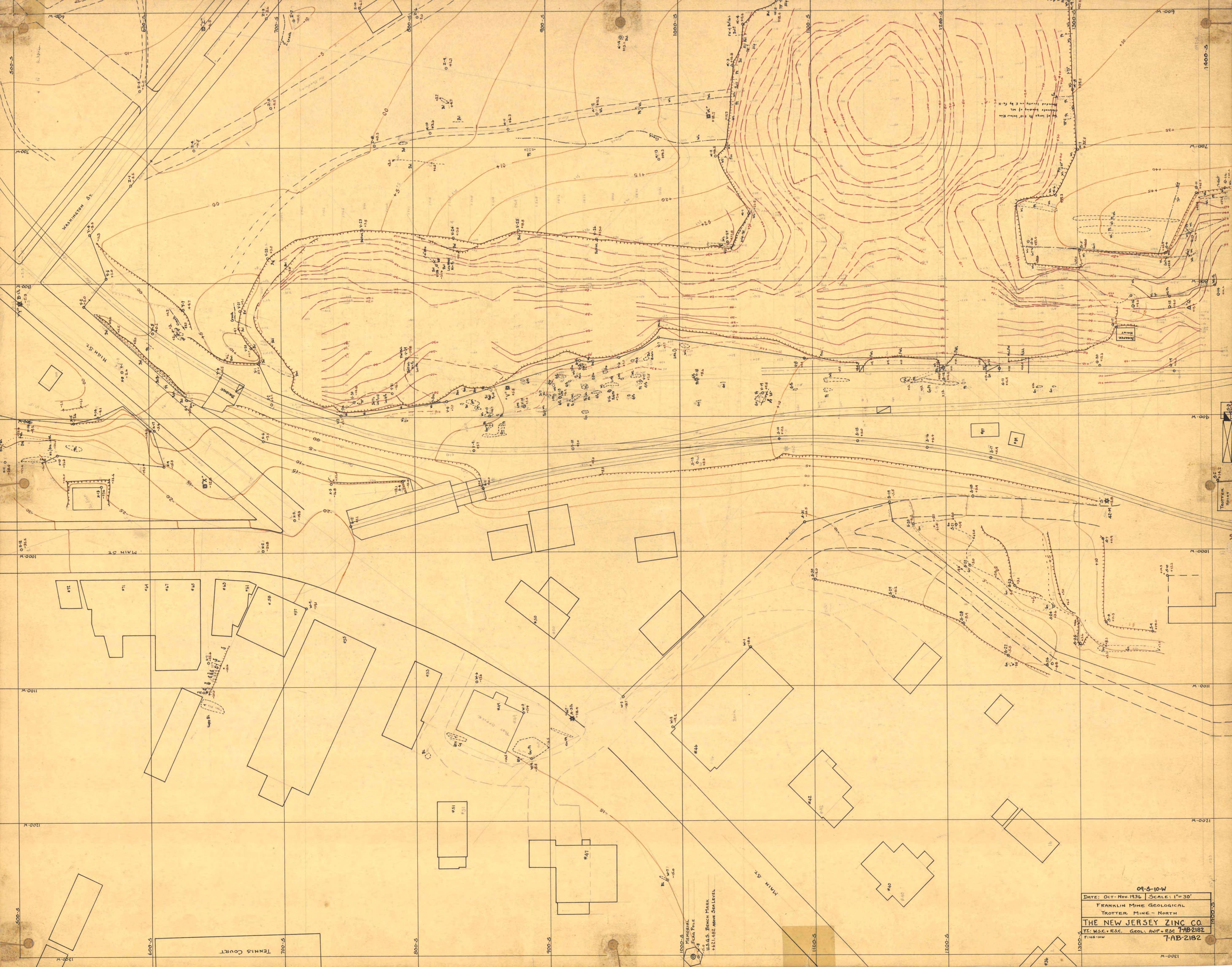
Broken Red Contours on Footwall before Quarrying.

Solid Red Contours on Footwall Before Subsidence.

HOT HOUSE

DATE: OCT-NOV. 1936 SCALE: 1" = 30'
 FRANKLIN MINE GEOLOGICAL
 TROTTER MINE 17-S-10-W
THE NEW JERSEY ZINC CO.
 PT. N.S.C. GEOL. BWP. REC. 7-AB-2182
 F. 115-10W

2100-S
 2150-S
 2150-S
 2150-S
 2200-S

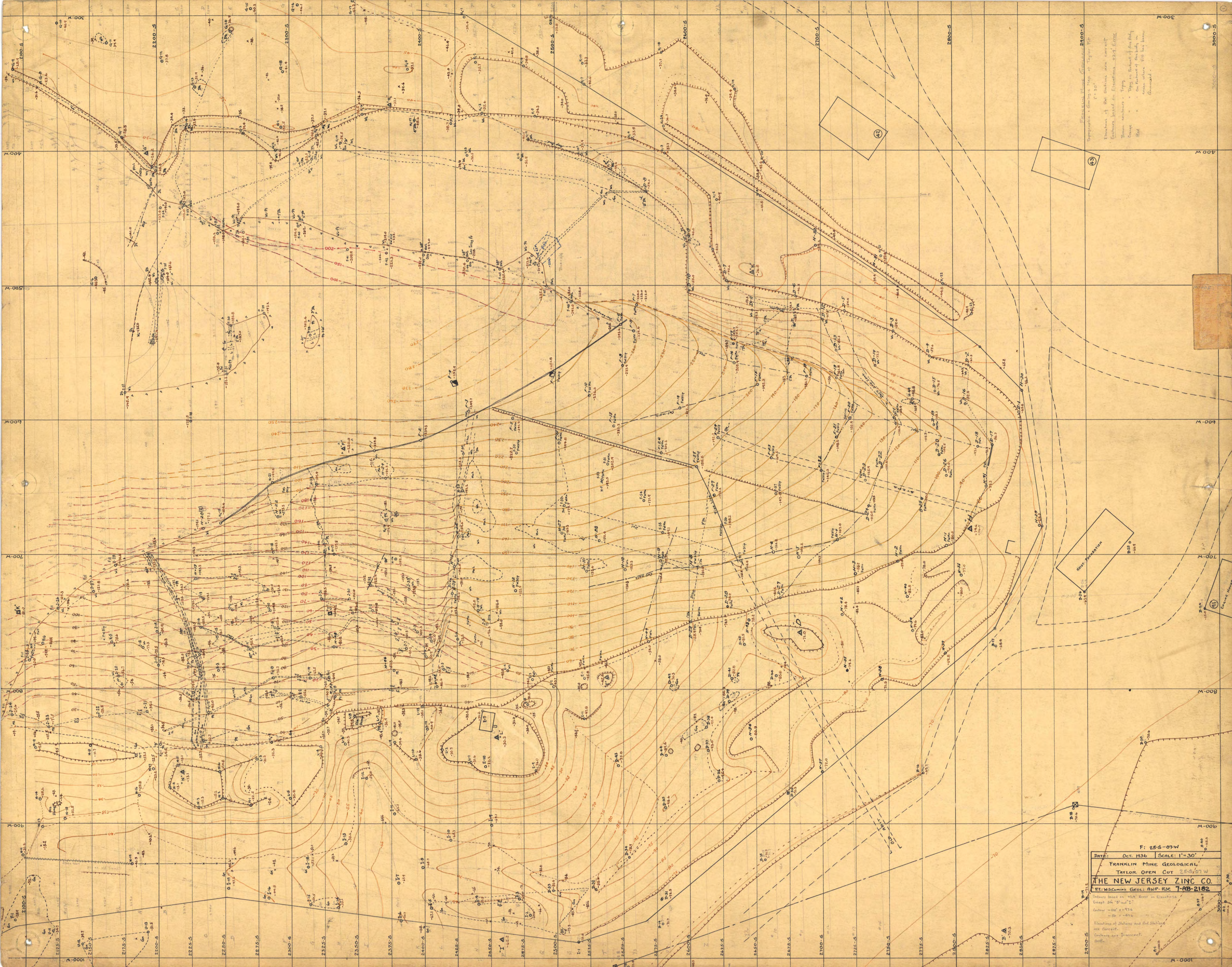


09-3-10-W
DATE: OCT-NOV-1936 | SCALE: 1"=30'
FRANKLIN MINE GEOLOGICAL
TROTTER MINE - NORTH
THE NEW JERSEY ZINC CO.
PL: W.S.C. + R.S.C. GEOL: AWP + R.S.C. 7-AB-2182
7-AB-2182
F168-10-W

MEMORIAL
FRANK FOLEY
U.S. BRANCH MARK
1921-1932 ABOVE SEA LEVEL

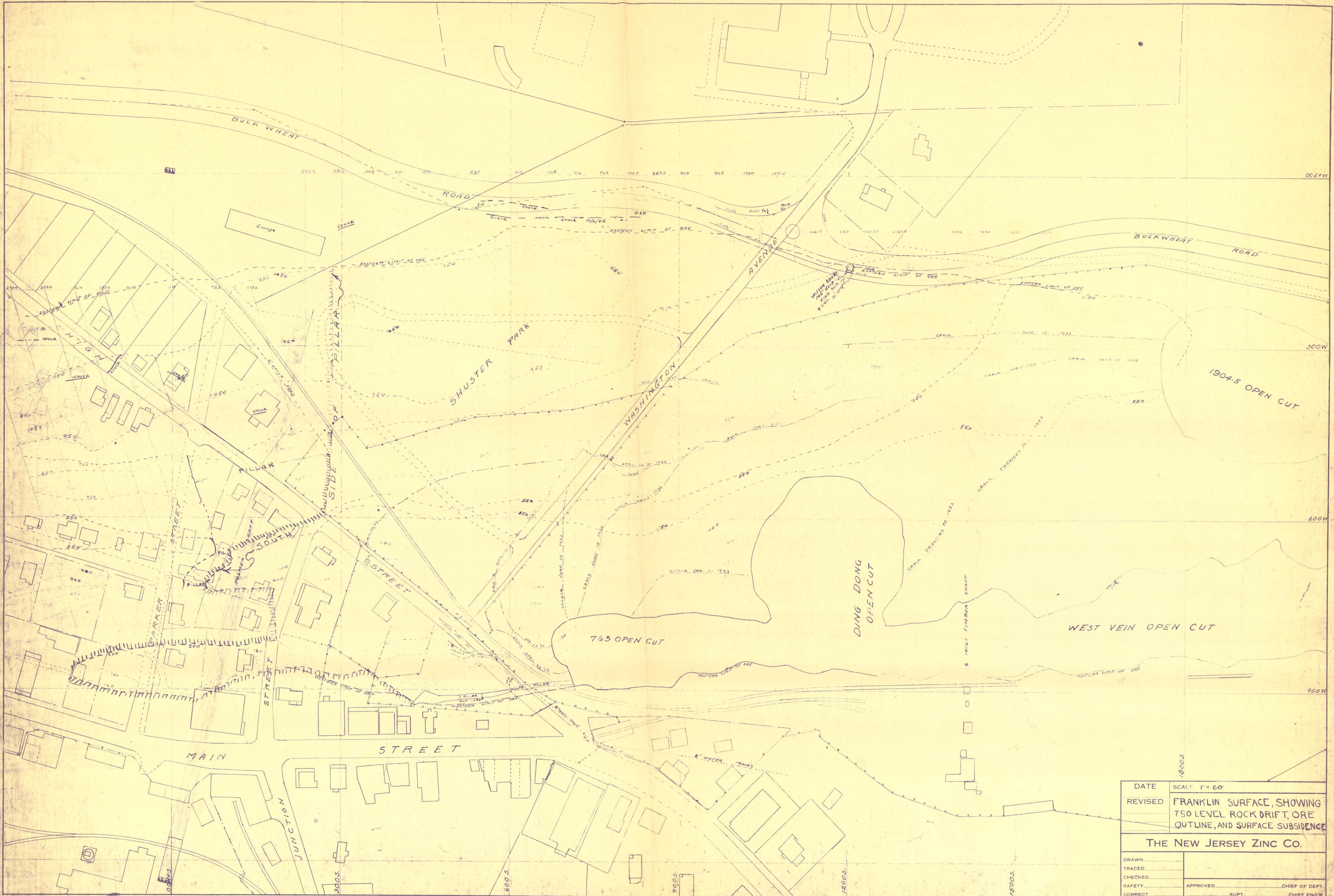
TENNIS COURT
5-009
5-007
5-008
5-006
5-005

1300-W
1200-W
1100-W
1000-W
900-W
800-W
700-W
600-W



Franklin Mine Geology
 1" = 30'
 Contours based on U.S.G.S. map of Taylor, Pa.
 Elevations of shafts and adits are correct.
 Contours based on U.S.G.S. map of Taylor, Pa.
 Brown contours - Topography
 Orange contours - Topography
 Contour interval - 10 feet
 Contour interval - 10 feet
 Contour interval - 10 feet
 Contour interval - 10 feet

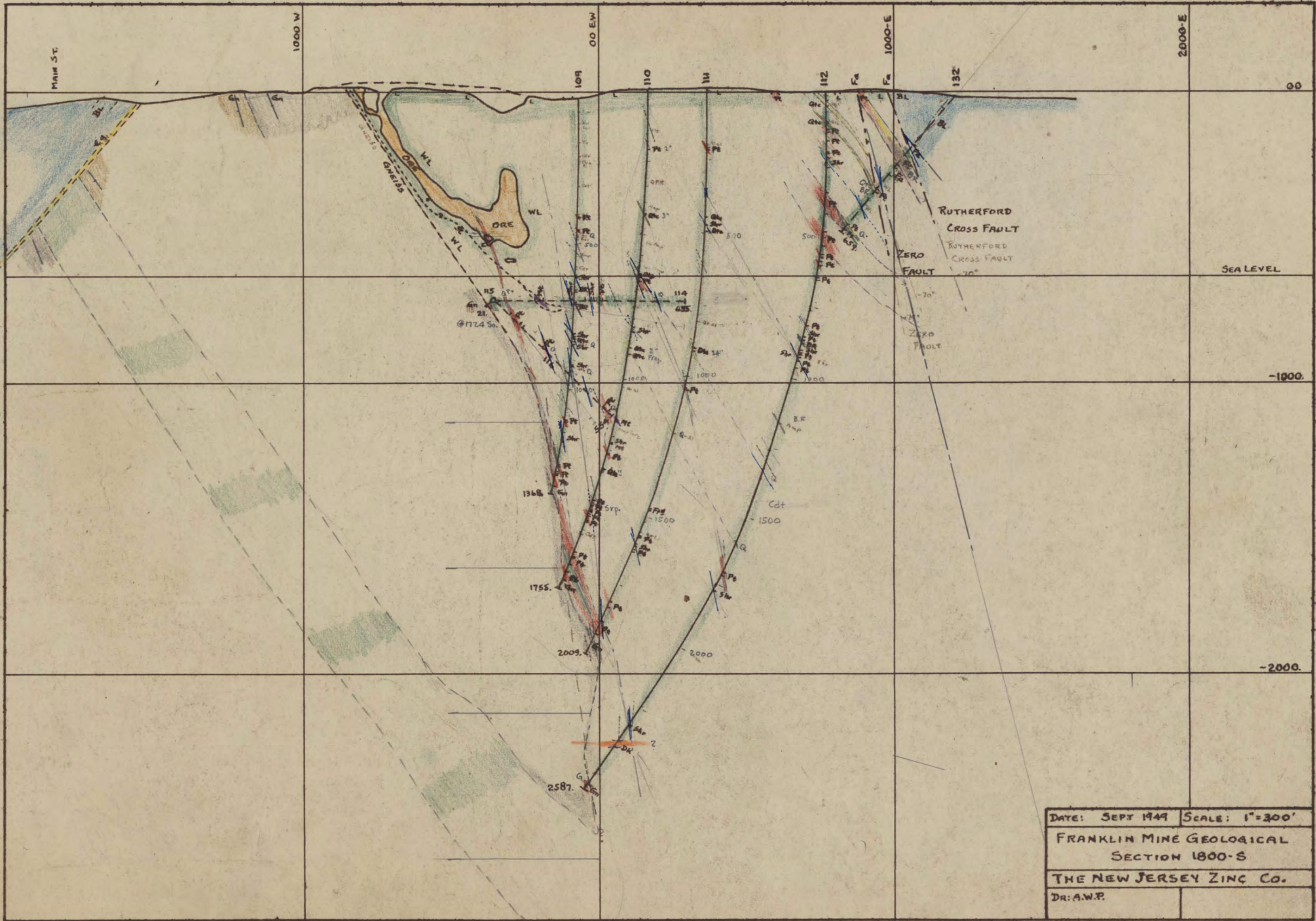
F: 25-S-07-W
 DATE: Oct. 1936 SCALE: 1"=30'
 FRANKLIN MINE GEOLOGICAL
 TAYLOR OPEN CUT 25-S-07-W
THE NEW JERSEY ZINC CO.
 BY: M.C. Jones, Geol. A.M.P. 832 7-AB-2182
 Contours based on U.S.G.S. map in elevations
 except 24" = 1" = 30'
 Contour interval - 10 feet
 Elevations of shafts and adits are correct.
 Contours are correct.
 Contour interval - 10 feet



DATE	SCALE 1" = 60'
REVISED	FRANKLIN SURFACE, SHOWING 750 LEVEL ROCK DRIFT, ORE OUTLINE, AND SURFACE SUBSIDENCE
THE NEW JERSEY ZINC CO.	
DRAWN	APPROVED
TRACED	SUPT.
CHECKED	CHIEF OF DEPT.
SAFETY	CHIEF ENGR.
CORRECT	



17-5-03-W
DATE: Nov-Dec 1936 SCALE: 1" = 30'
FRANKLIN MINE GEOLOGICAL
EAST VEIN FILL QUARRY
THE NEW JERSEY ZINC CO.
P.E. McCune Geol. AWP-Ros 7-AB-2102
P. 175-04W



DATE: SEPT 1949	SCALE: 1"=300'
FRANKLIN MINE GEOLOGICAL SECTION 1800-S	
THE NEW JERSEY ZINC CO.	
DR: A.W.P.	

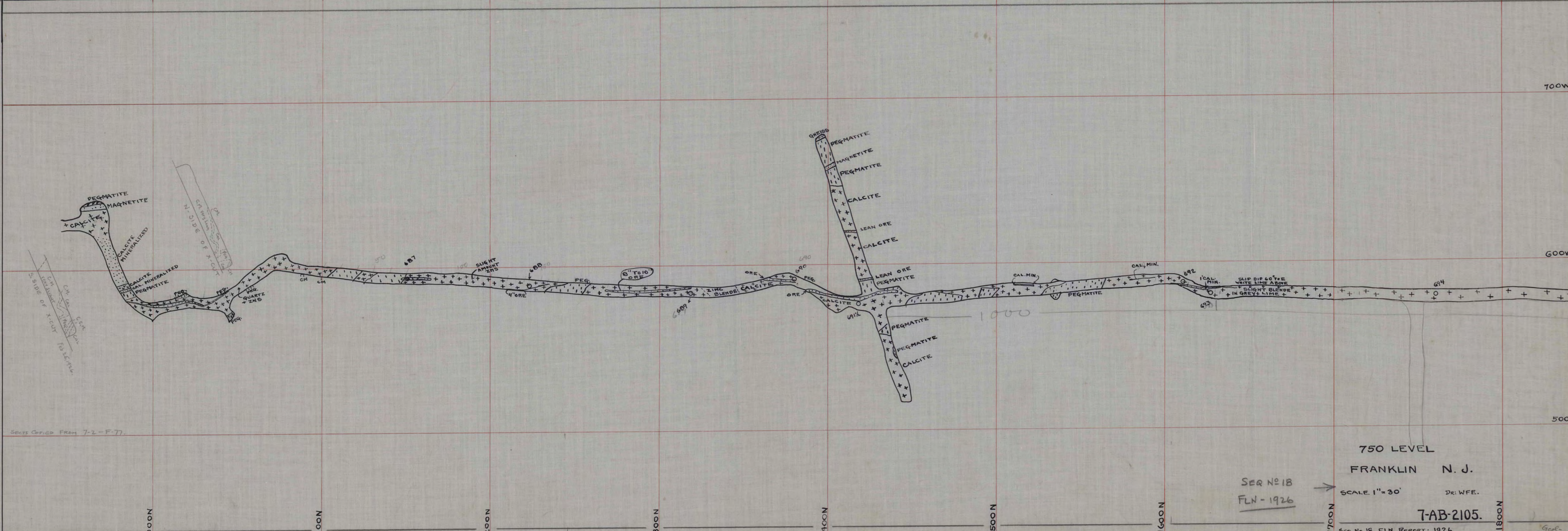


STEREOGRAM OF
FRANKLIN MINE
Scale 1"=100' Nov 1926

Nov. 1926 1"=100'
STEREOGRAM OF
FRANKLIN MINE
DR: WFE ?

7-AB-2104

7-2
SER No 17-FLN- Nov 1926



SECTS COPIED FROM 7-2-F-77.

SEG. No. 18
FLN-1926

750 LEVEL
FRANKLIN N. J.

SCALE 1"=30' DR: WFE.

7-AB-2105.

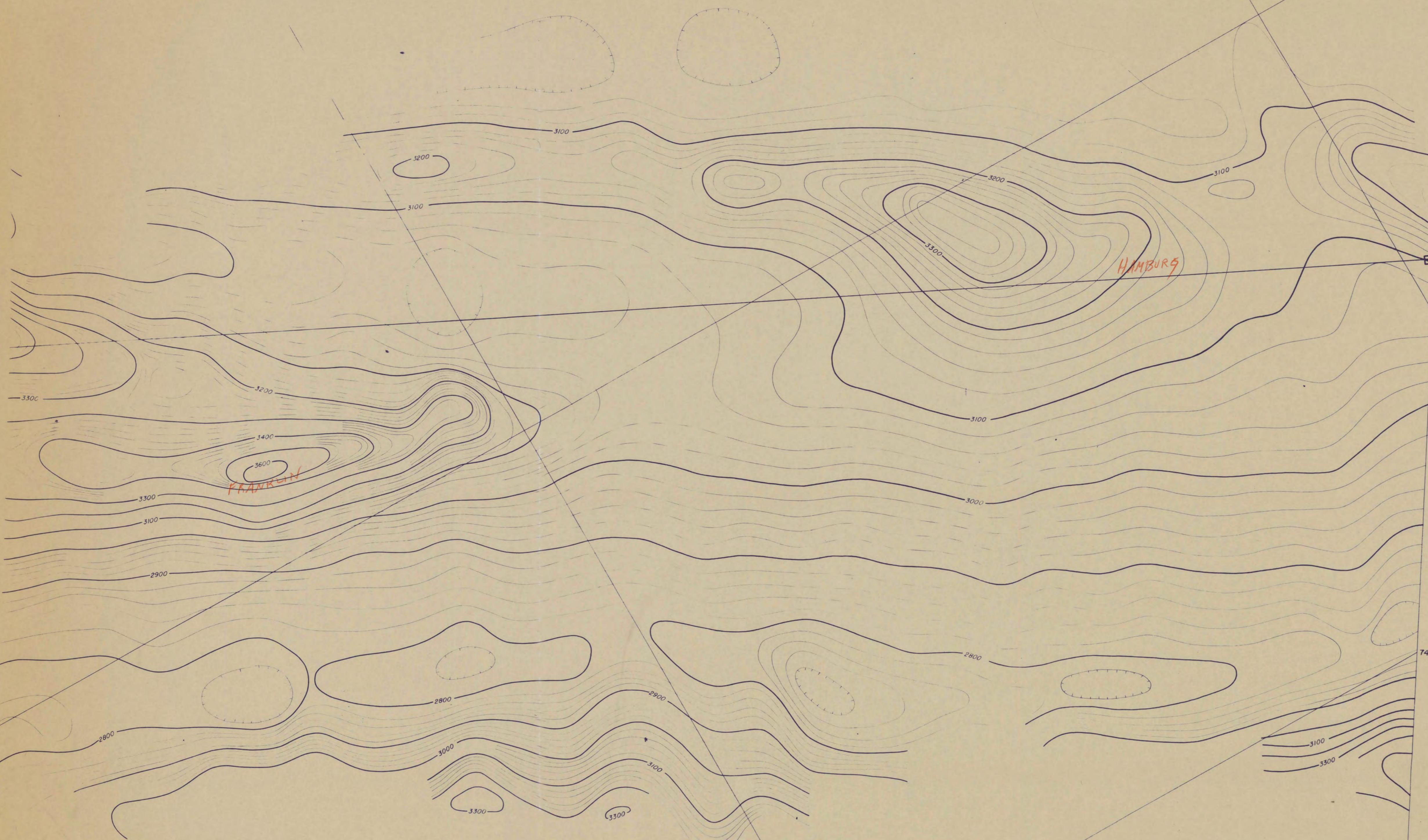
SEG. No. 18, FLN REPORT: 1926

Geol.

74°35'00"

41°10'00"

74°32'30"



AEROMAGNETIC MAP
 FLOWN AT 500'
 1" = 1000' ±



3000-N
2000-N
1000-N
00-N-S
500-S
1000-S
1500-S
2000-S

5000 E
4000 E
3000 E
2000 E
1000 E
0-0
1000 W
2000 W
3000 W
4000 W
5000 W

REFERENCE DRAWINGS ABOVE	
NO.	DATE
1	
2	
3	
4	
5	
6	
7	
8	
9	
10	
11	
12	
13	
14	
15	
16	
17	
18	
19	
20	
21	
22	
23	
24	
25	
26	
27	
28	
29	
30	
31	
32	
33	
34	
35	
36	
37	
38	
39	
40	
41	
42	
43	
44	
45	
46	
47	
48	
49	
50	
51	
52	
53	
54	
55	
56	
57	
58	
59	
60	
61	
62	
63	
64	
65	
66	
67	
68	
69	
70	
71	
72	
73	
74	
75	
76	
77	
78	
79	
80	
81	
82	
83	
84	
85	
86	
87	
88	
89	
90	
91	
92	
93	
94	
95	
96	
97	
98	
99	
100	

DATE: FEBRUARY 1944 SCALE: 1" = 300 FT

REVISIONS

NO. DATE

1

2

3

4

5

6

7

8

9

10

11

12

13

14

15

16

17

18

19

20

21

22

23

24

25

26

27

28

29

30

31

32

33

34

35

36

37

38

39

40

41

42

43

44

45

46

47

48

49

50

51

52

53

54

55

56

57

58

59

60

61

62

63

64

65

66

67

68

69

70

71

72

73

74

75

76

77

78

79

80

81

82

83

84

85

86

87

88

89

90

91

92

93

94

95

96

97

98

99

100

THE NEW JERSEY ZINC COMPANY
FRANKLIN, N. J.

SURFACE GEOLOGY
3500 N - 4150 S (E)

7-AB-2205

DATE: FEBRUARY 1944 SCALE: 1" = 300 FT

REVISIONS

NO. DATE

1

2

3

4

5

6

7

8

9

10

11

12

13

14

15

16

17

18

19

20

21

22

23

24

25

26

27

28

29

30

31

32

33

34

35

36

37

38

39

40

41

42

43

44

45

46

47

48

49

50

51

52

53

54

55

56

57

58

59

60

61

62

63

64

65

66

67

68

69

70

71

72

73

74

75

76

77

78

79

80

81

82

83

84

85

86

87

88

89

90

91

92

93

94

95

96

97

98

99

100

APPROVED

ENGINEER

DATE: FEBRUARY 1944

SCALE: 1" = 300 FT

REVISIONS

NO. DATE

1

2

3

4

5

6

7

8

9

10

11

12

13

14

15

16

17

18

19

20

21

22

23

24

25

26

27

28

29

30

31

32

33

34

35

36

37

38

39

40

41

42

43

44

45

46

47

48

49

50

51

52

53

54

55

56

57

58

59

60

61

62

63

64

65

66

67

68

69

70

71

72

73

74

75

76

77

78

79

80

81

82

83

84

85

86

87

88

89

90

91

92

93

94

95

96

97

98

99

100

REVISIONS

NO. DATE

1

2

3

4

5

6

7

8

9

10

11

12

13

14

15

16

17

18

19

20

21

22

23

24

25

26

27

28

29

30

31

32

33

34

35

36

37

38

39

40

41

42

43

44

45

46

47

48

49

50

51

52

53

54

55

56

57

58

59

60

61

62

63

64

65

66

67

68

69

70

71

72

73

74

75

76

77

78

79

80

81

82

83

84

85

86

87

88

89

90

91

92

93

94

95

96

97

98

99

100



REFERENCE DRAWINGS ABOVE

THIS DRAWING IS DESIGN AND DETAIL OF OUR PROPERTY AND MUST BE USED EXCEPT IN CONNECTION WITH OUR WORK. ALL RIGHTS OF DESIGN AND INVENTION ARE RESERVED. THIS DRAWING MUST BE RETURNED TO THE NEW JERSEY ZINC COMPANY, FRANKLIN, N. J.

THE NEW JERSEY ZINC COMPANY
FRANKLIN, N. J.

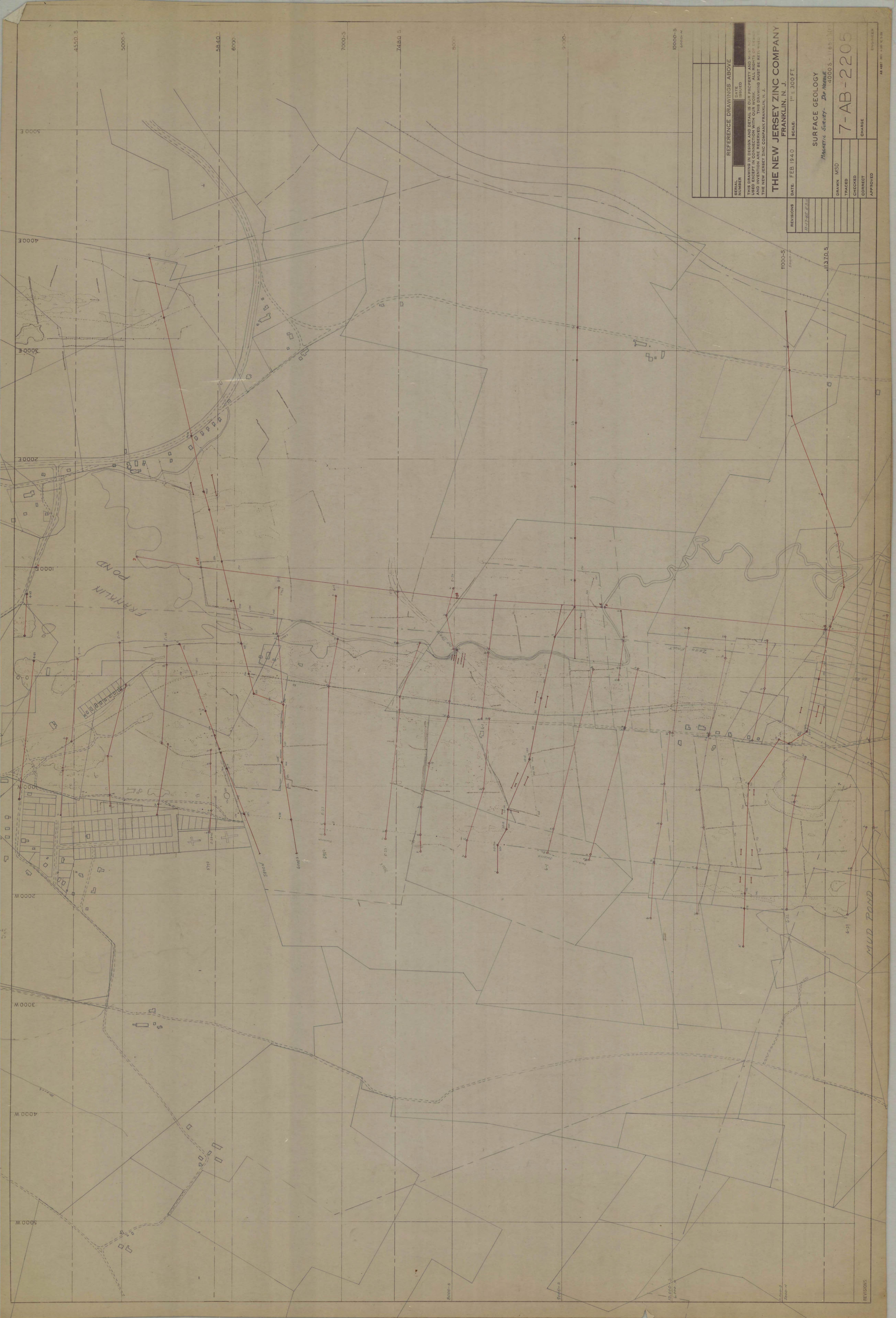
DATE: FEBRUARY 1944 SCALE: 1" = 300 FT

SURFACE GEOLOGY
MAGNETIC SURVEY - D. W. MEERBLE
3500 N - 4150-S

7-AB-2

REVISIONS	DATE	BY	REASON

DRAWN MSD
TRACED
CHECKED
CORRECT
APPROVED



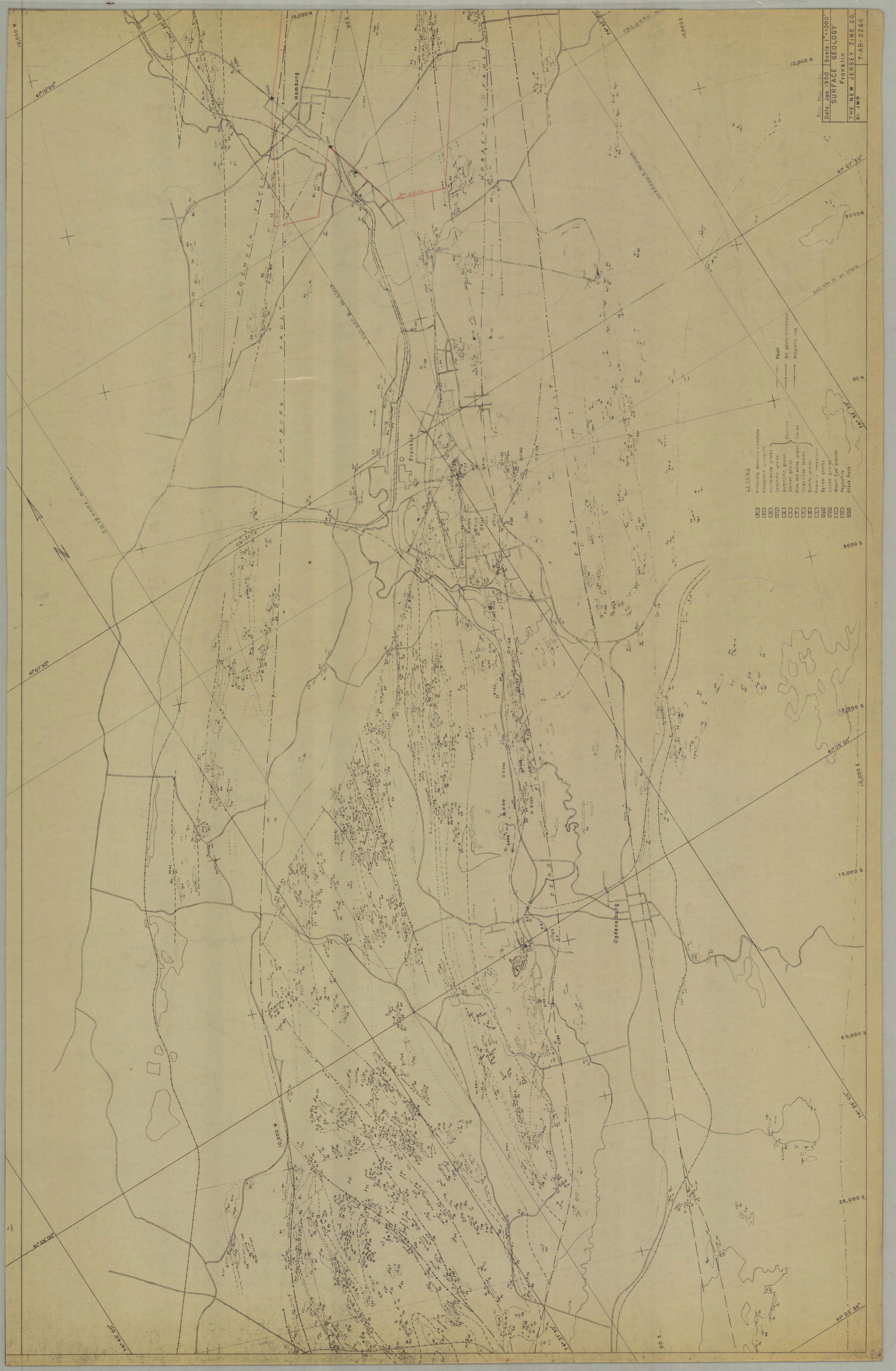
4550 S 5000 S 5840 S 7000 S 7480 S 8000 S 9000 S
 5000 E 4000 E 3000 E 2000 E 1000 E
 2000 W 3000 W 4000 W 5000 W

REFERENCE DRAWINGS ABOVE	
SERIAL NUMBER	DATE ISSUED
THIS DRAWING IN DESIGN AND DETAIL IS OUR PROPERTY AND MUST NOT BE USED EXCEPT IN CONNECTION WITH OUR WORK. ALL RIGHTS OF DESIGN OR INVENTION ARE RESERVED AND NO PART THEREOF IS TO BE REPRODUCED OR TRANSMITTED IN ANY FORM OR BY ANY MEANS WITHOUT THE WRITTEN PERMISSION OF THE NEW JERSEY ZINC COMPANY, FRANKLIN, N. J.	
THE NEW JERSEY ZINC COMPANY FRANKLIN, N. J.	
DATE, FEB 1940	SCALE, 1" = 300 FT.
SURFACE GEOLOGY MAGNETIC SURVEY - DP MEERLE 4000 S - 16 S 30 E	
DRAWN MSD	7-AB-2205
TRACED	CHARGE
CHECKED	APPROVED
CORRECT	
APPROVED	

REVISIONS	DATE	BY

REVISIONS





- LEGEND**
- 1000
 - 1500
 - 2000
 - 2500
 - 3000
 - 3500
 - 4000
 - 4500
 - 5000
 - 5500
 - 6000
 - 6500
 - 7000
 - 7500
 - 8000
 - 8500
 - 9000
 - 9500
 - 10000
- Kristine domestic limestone
 - Highland quartzite
 - Homblende gneiss
 - Graphitic gneiss
 - Quartzitic gneiss
 - Garnet gneiss
 - Pink and white gneiss
 - Black gneiss
 - Blotchy gneiss
 - Fresh limestone
 - Brown gneiss
 - Lassa gneiss
 - Mount Eye granite
 - Pegmatite
 - Black Rock
- Fault
 - Air photo lineament
 - Magnetite line

Rev. Map. 1952
 Date, Jan. 1950 Scale: 1"=1000'
SURFACE GEOLOGY
 Franklin
 THE NEW JERSEY ZINC CO.
 Dr. J.M.H. 7-AB-2266