



State of New Jersey
Department of Environmental Protection
Geological Survey

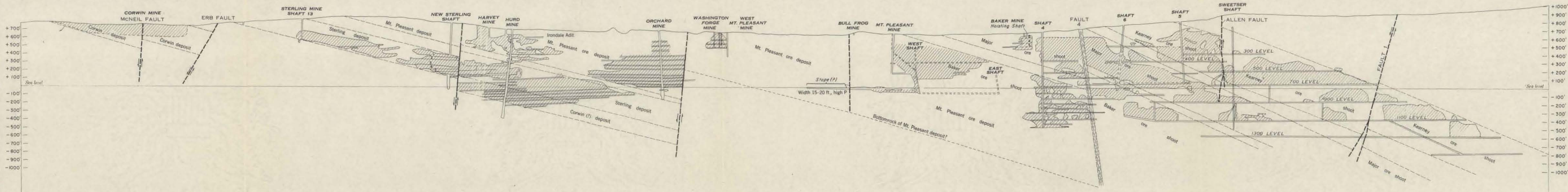


Information Disclaimer

The State of New Jersey makes great effort to provide secure, accurate and complete information. However, portions of the information contained here may be incorrect or not current.

The State of New Jersey, its officers, employees or agents shall not be liable for damages or losses of any kind arising out of or in connection with the use or performance of information, including but not limited to, damages or losses caused by reliance upon the accuracy or timeliness of any such information, or damages incurred from the viewing, distributing, or copying of those materials.

The materials and information provided here are provided "as is." No warranty of any kind, implied, expressed, or statutory, including but not limited to the warranties of non-infringement of third party rights, title, merchantability, fitness for a particular purpose, and freedom from computer virus, is given with respect to the contents of this document.

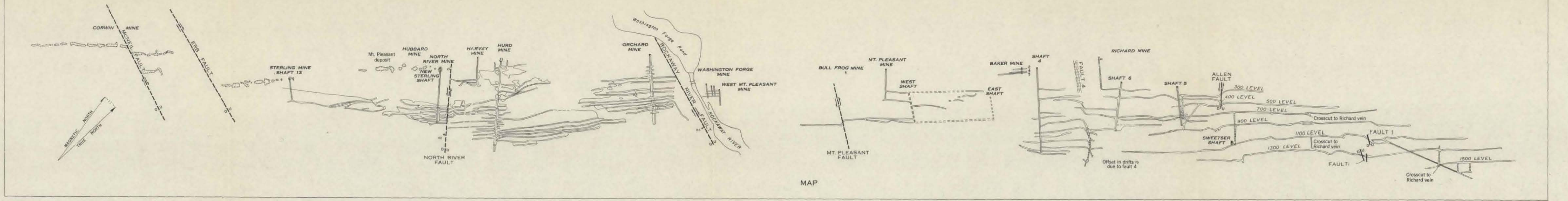


VERTICAL LONGITUDINAL PROJECTION

PLANE OF PROJECTION

EXPLANATION

- High angle fault, showing dip
Dashed where approximately located
- Fault, showing relative movement
- Vertical shaft
- Inclined shaft
- Mine workings
Dashed where approximately located or shaft out
- Crosscut
- Approximate outline of slopes in section
- Open cut

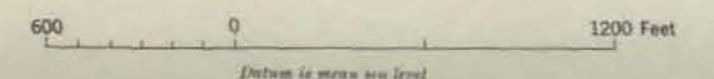


MAP

MAP AND VERTICAL LONGITUDINAL PROJECTION OF THE MOUNT PLEASANT, STERLING, AND CORWIN MAGNETITE DEPOSITS, DOVER DISTRICT, NEW JERSEY

Base compiled by P. K. Sims from maps of Alan Wood Steel Co. and Richard Ore Co., 1949

Geology by P. K. Sims, 1949



49139 O-18 (1a pocket)

WEST MT PLEASANT MINE

AUGUST, 1882.

Scale 1 in = 100 ft

or 1" = 33.3'

Note: Ground taken out by the operators of Washington Forge Mine from the West Mt Pleasant Mine indicated by yellow shading over ground colour.

PLAN

VERTICAL SECTION

SECTION LOOKING NORTH EAST

SECTION LOOKING SOUTH WEST

Washington Forge Mine

Ross' Line

Washington Forge Mine

Division Line

Ross' Line

