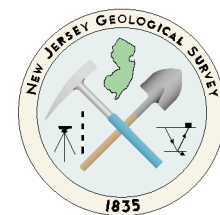
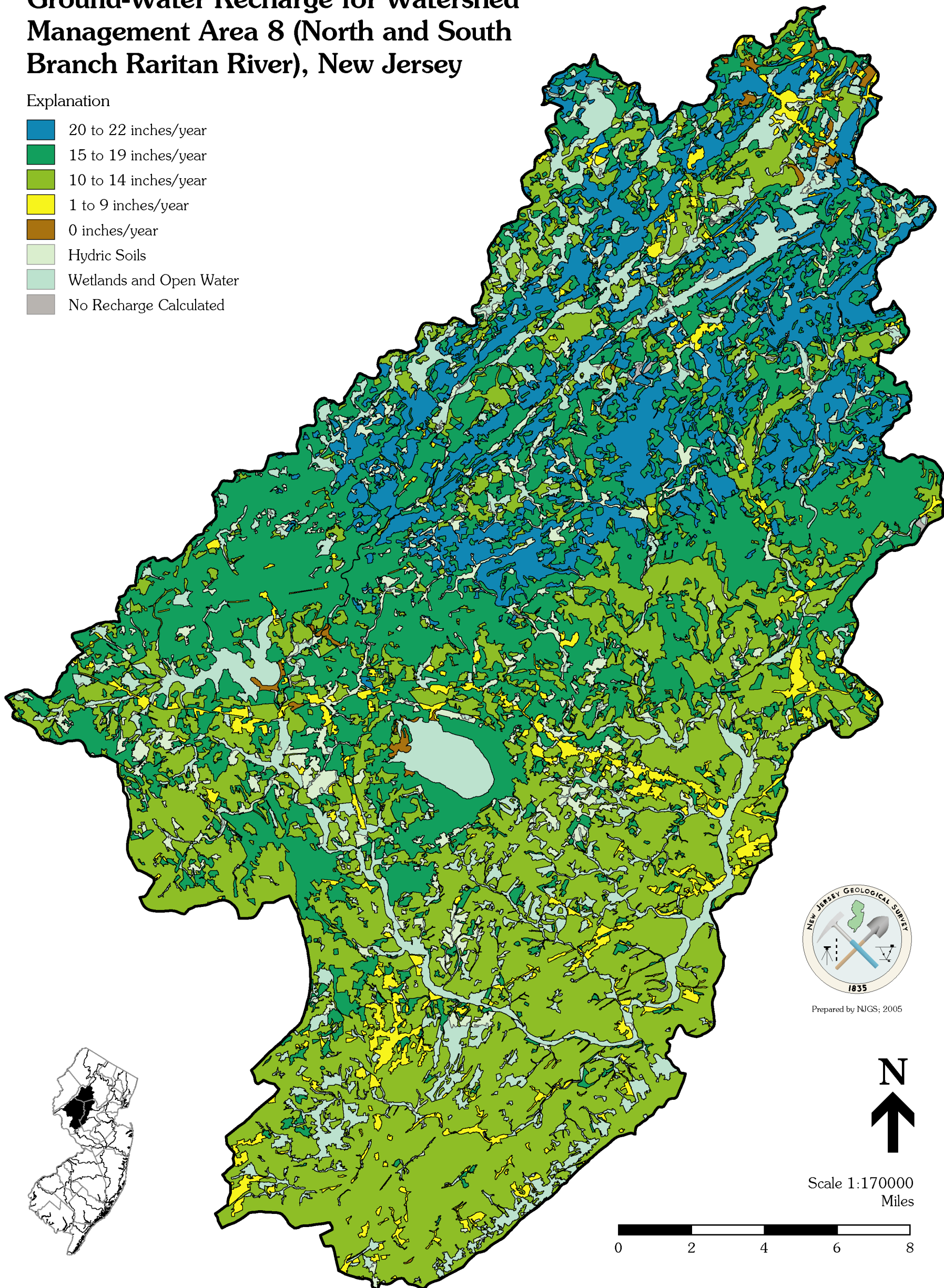


# Ground-Water Recharge for Watershed Management Area 8 (North and South Branch Raritan River), New Jersey

## Explanation

- 20 to 22 inches/year
- 15 to 19 inches/year
- 10 to 14 inches/year
- 1 to 9 inches/year
- 0 inches/year
- Hydric Soils
- Wetlands and Open Water
- No Recharge Calculated



Prepared by NJGS, 2005



Scale 1:170000  
Miles

