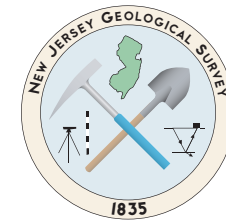


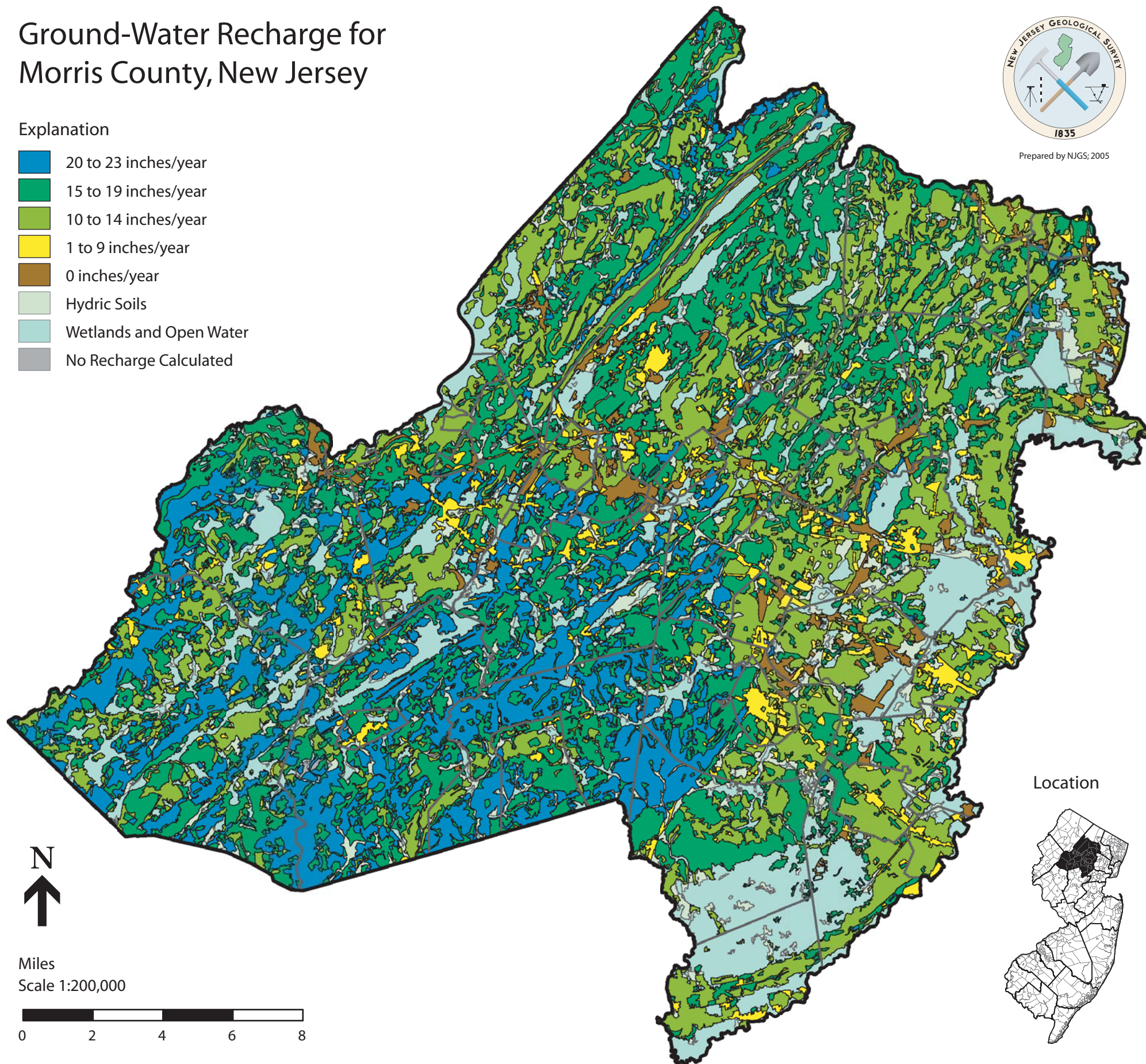
Ground-Water Recharge for Morris County, New Jersey



Prepared by NJGS, 2005

Explanation

- 20 to 23 inches/year
- 15 to 19 inches/year
- 10 to 14 inches/year
- 1 to 9 inches/year
- 0 inches/year
- Hydric Soils
- Wetlands and Open Water
- No Recharge Calculated



Miles
Scale 1:200,000



Location

