

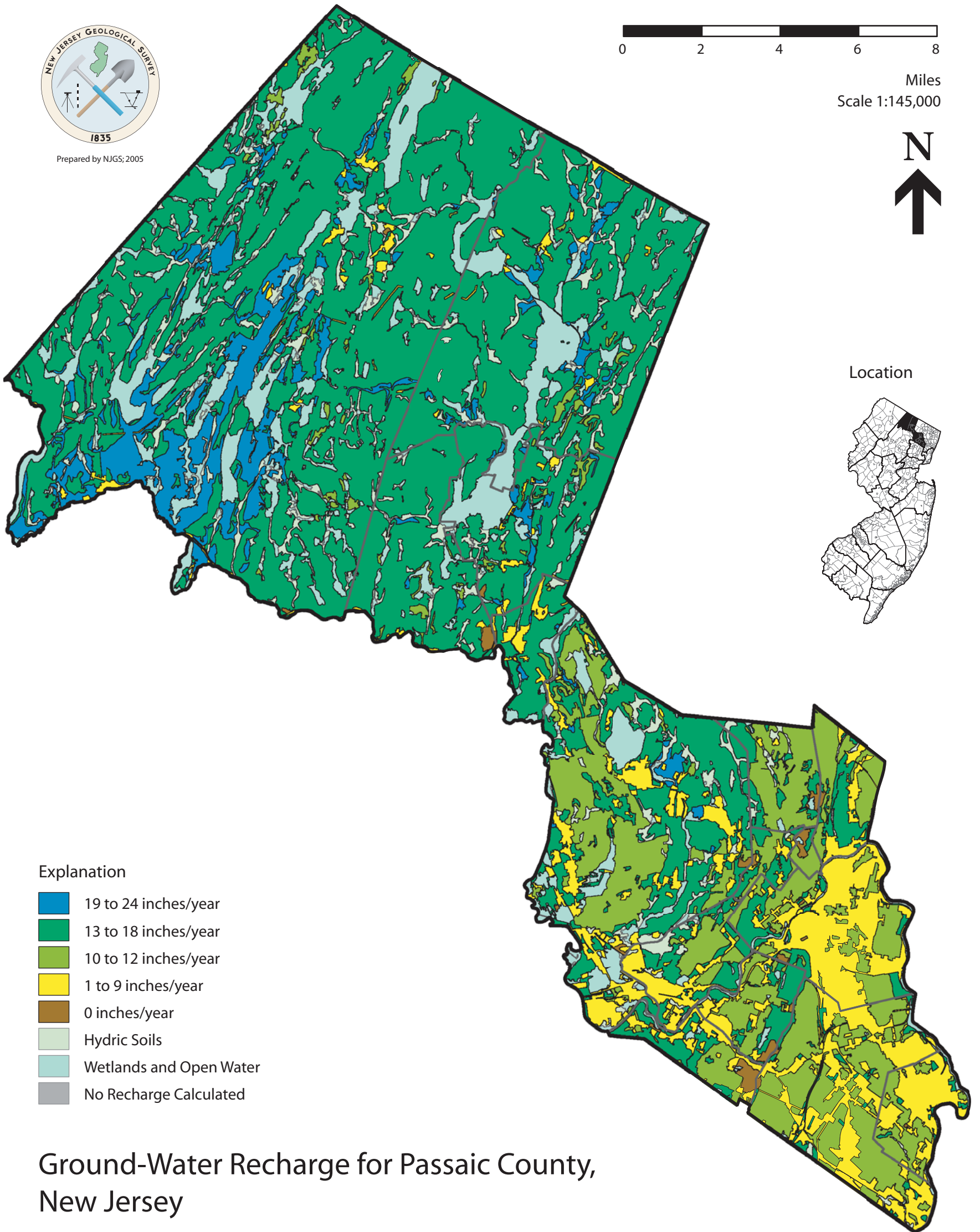
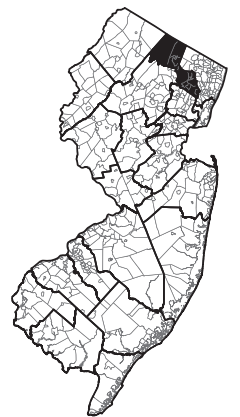
Prepared by NJGS, 2005











Miles  
Scale 1:145,000



Location



Explanation

-  19 to 24 inches/year
-  13 to 18 inches/year
-  10 to 12 inches/year
-  1 to 9 inches/year
-  0 inches/year
-  Hydric Soils
-  Wetlands and Open Water
-  No Recharge Calculated

# Ground-Water Recharge for Passaic County, New Jersey