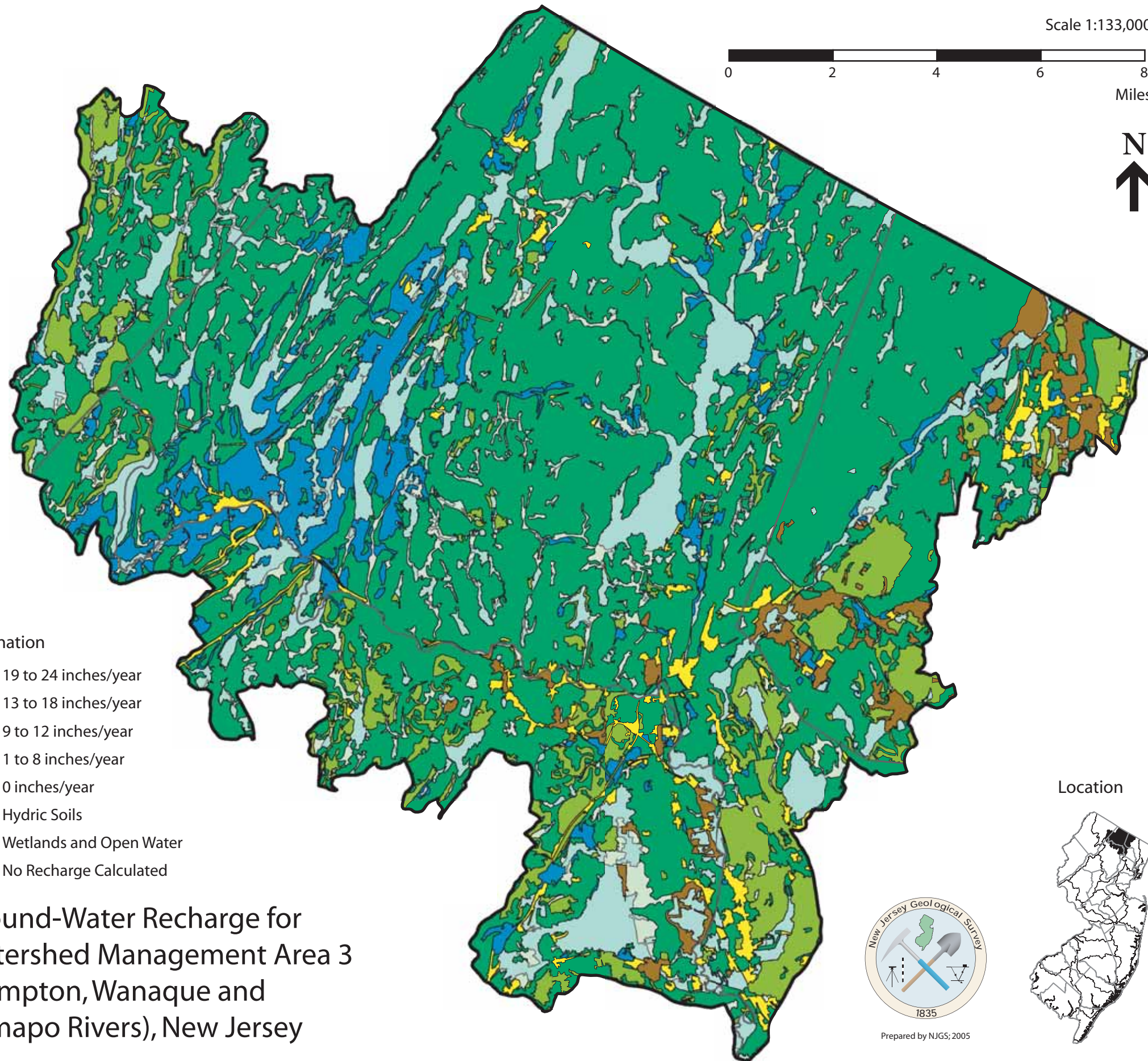


Scale 1:133,000

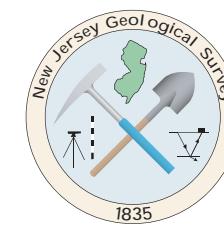
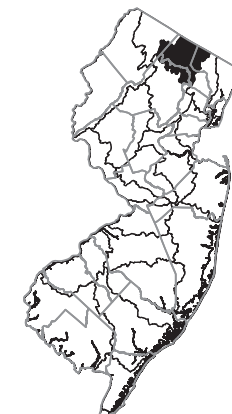


Explanation

- 19 to 24 inches/year
- 13 to 18 inches/year
- 9 to 12 inches/year
- 1 to 8 inches/year
- 0 inches/year
- Hydic Soils
- Wetlands and Open Water
- No Recharge Calculated

Ground-Water Recharge for Watershed Management Area 3 (Pompton, Wanaque and Ramapo Rivers), New Jersey

Location



Prepared by NJGS; 2005