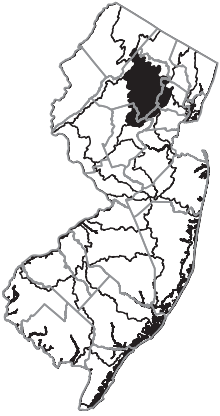


Prepared by NJGS, 2005

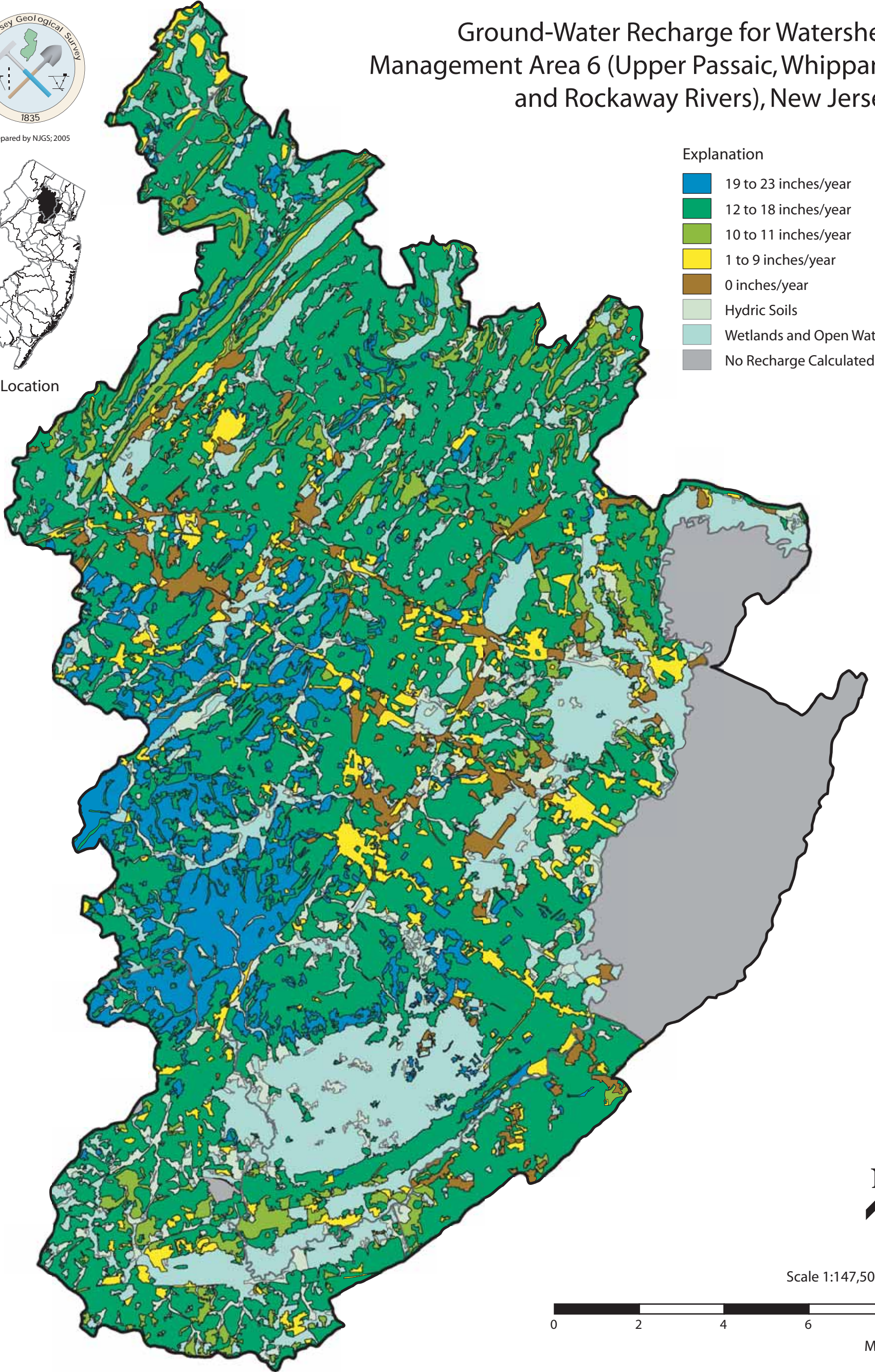


Location

# Ground-Water Recharge for Watershed Management Area 6 (Upper Passaic, Whippany and Rockaway Rivers), New Jersey

## Explanation

- 19 to 23 inches/year
- 12 to 18 inches/year
- 10 to 11 inches/year
- 1 to 9 inches/year
- 0 inches/year
- Hydric Soils
- Wetlands and Open Water
- No Recharge Calculated



Scale 1:147,500



Miles