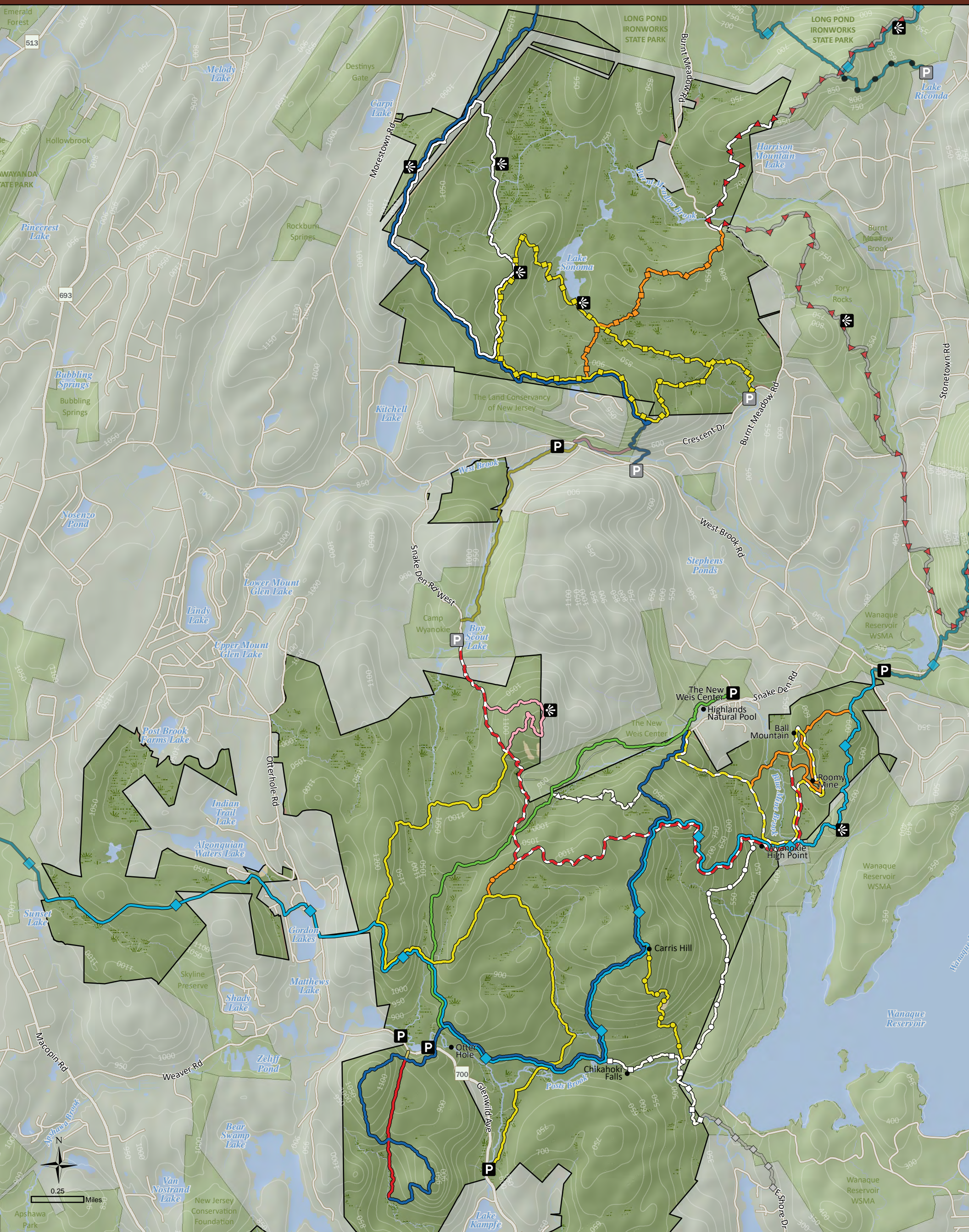


# NORVIN GREEN State Forest



- |                     |                                |                                   |                                  |                    |
|---------------------|--------------------------------|-----------------------------------|----------------------------------|--------------------|
| Open Field or Grass | Carris Hill Trail (0.85 mi)    | Mine Trail (2.1 mi)               | Torne Trail (0.72 mi)            | Parking Lot        |
| Forest              | Hewitt-Butler Trail (8.6 mi)   | Otter Hole Trail (2.7 mi)         | Will Monroe Trail (1.0 mi)       | Parking (Pull Off) |
| Water               | Highlands Trail (7.7 mi)       | Outlaw Trail (0.24 mi)            | Wyanokie Circular Trail (3.8 mi) | Scenic View        |
| Wetland             | Lake Sonoma Trail (1.3 mi)     | Overlook Rock Trail (3.3 mi)      | Wyanokie Crest Trail (4.3 mi)    |                    |
|                     | Lower Trail (1.4 mi)           | Posts Brook Trail (0.9 mi)        |                                  |                    |
|                     | Macopin Trail (0.6 mi)         | Roomy Mine Trail (1.3 mi)         |                                  |                    |
|                     | Manaticut Point Trail (4.2 mi) | Stonetown Circular Trail (1.0 mi) |                                  |                    |