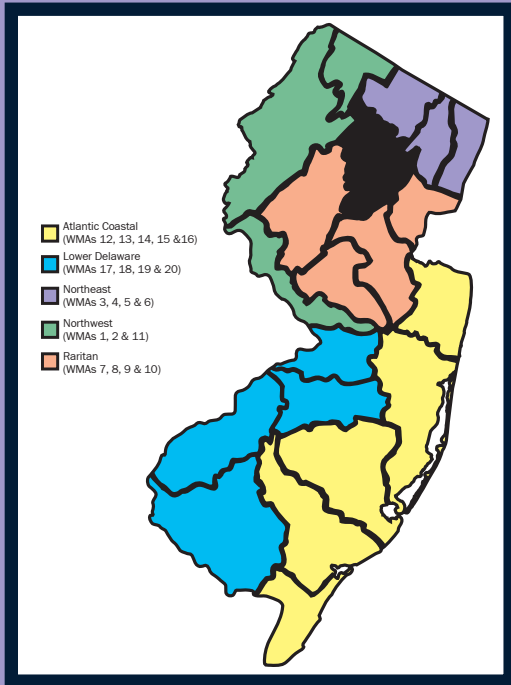




Watershed Management Area 6

Upper and Mid Passaic, Whippany, Rockaway



Watershed Management Area 6 (WMA 6) represents the area drained by waters from the upper reaches of the Passaic River Basin. This includes the Passaic River from its headwaters in Morris County to the confluence of the Pompton River.

This area is situated in Morris, Somerset, Sussex and Essex Counties and includes the Upper and Middle Passaic River, Whippany River and Rockaway River Watersheds. Extensive suburban development and reliance upon ground water sources for water supply characterize this watershed.

The Upper Passaic River represents a significant source of drinking water for a large portion of northeastern New Jersey. About one half of the land in this watershed is undeveloped or vacant with the rest primarily residential and commercial. This watershed has experienced key development in the more rural undeveloped areas.

The land use patterns in the Rockaway River area are complex and include wooded/vacant areas, parklands and residential development. There are also some areas having industrial and commercial uses. Suburban development is on the rise.

Urban/suburban development is causing the water quality of the Whippany River to be degraded. Runoff from construction activity, stormwater discharges, urban surfaces and the loss of riparian vegetation are suspected of contributing to siltation in the river. This has resulted in reduction in the trout holding capacity of the waterway.

This area has been severely impacted by urban/suburban development. The quality of water is affected by these conditions. Sources such as construction activities and urban runoff from storm sewers and urban surfaces have resulted in siltation, high stream temperatures and losses of riparian vegetation.

WMA 6 Partnerships:

- ▶ Great Swamp Watershed Association
- ▶ Passaic River Coalition
- ▶ Rockaway River Cabinet
- ▶ Ten Towns Great Swamp Watershed Management Committee
- ▶ Whippany River Watershed Action Committee



New Jersey Department of Environmental Protection
Division of Watershed Management
Bureau of Watershed Planning

Watershed Management Area 6

Upper & Mid Passaic, Whippany, Rockaway

This factsheet is a snapshot of the workplan for Watershed Management Area 6.

Watershed Plans are regional/areawide in scope (i.e. not a study of one location); detail specific projects or management measures to be implemented to achieve the goals of the plan; and set forth a prioritization of the projects or measures identified in the plan. The Department has identified a **Priority Segment for Restoration** in each watershed management area. Funding was provided to conduct a basic characterization and assessment of the segment and to identify restoration projects to address a specific parameter of concern (i.e. fecal coliform). Since 2003, the Department has prepared and adopted hundreds of Total Maximum Daily Load (TMDL) documents to address the impaired waters of the state. **TMDL Implementation Priorities** represent the Bureau of Watershed Planning's focus for implementing the adopted TMDLs. **Active Grant Projects** represent current projects with which the Bureau of Watershed Planning is actively involved. Many of these projects are funded through the Federal 319(h) Nonpoint Source Program.

Watershed Plans:

- ▶ Rockaway River Pathogenic Indicator and Pollutant Trackdown Evaluations for the Rockaway River Watershed Priority Stream Segment (approved plan)
- ▶ Troy Brook (under development)

Priority Segment for Restoration:

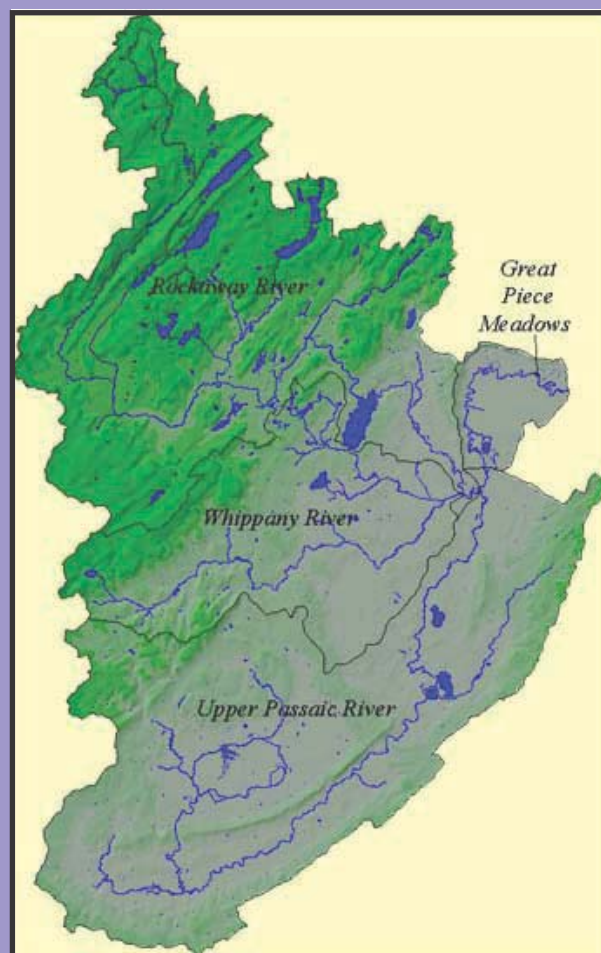
- ▶ Rockaway River between Route 80 and Blackwell Street in Dover (approved plan)

TMDL Implementation Priorities:

- ▶ Whippany River Fecal Coliform (First coliform TMDL developed in NJ)
- ▶ Passaic River Phosphorus
- ▶ Rockaway River Fecal Coliform

Active Grant Projects:

- ▶ Beaver Brook/Hibernia Brook Watershed Stormwater Management Plan - Phase I, Topographical Mapping
 - Morris County Planning Department
- ▶ Speedwell Lake at the Whippany River Shoreline Restoration Project (Phases 1-4) Morristown, Morris County, NJ
 - Whippany River Watershed Action Committee
- ▶ Regional Stormwater Management Plan for Troy Brook, Morris County, NJ
 - Rutgers University
- ▶ Bee Meadow Pond Shoreline Restoration Project
 - Rutgers Cooperative Extension - Dept. of Environmental Science
- ▶ Morris County Stormwater Treatment Wetland Project - Phases 1 & 2
 - Rockaway River Watershed Cabinet
- ▶ Goose Management and Stream Restoration Project, Hurd Park, Dover
 - Rockaway River Watershed Cabinet
- ▶ Implementation of Riparian Forest Buffers and Public Awareness in the Great Swamp Watershed
 - Ten Towns Great Swamp Watershed Management Committee
- ▶ Watershed Management Area 6 - Riparian Forest Buffer Protection Program
 - Passaic River Coalition
- ▶ White Meadow Lake Stormwater Implementation
 - Rockaway Township



For more information on Watershed Management Area 6, contact Pat Rector, WMA 6 Area Manager at (609) 633-8173 or email Pat.Rector@dep.state.nj.us.

For more information on New Jersey's 20 Watershed Management Areas visit www.nj.gov/dep/watershedmgt