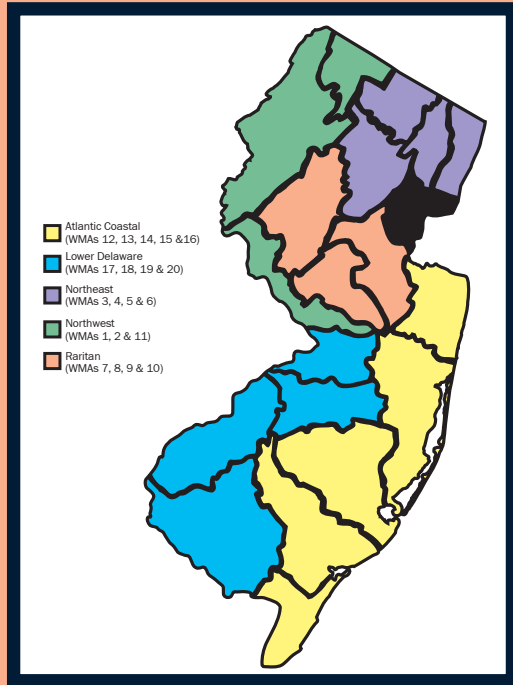




Watershed Management Area 7

Arthur Kill



Watershed Management Area 7 (WMA 7) is represented by large portions of Essex, Union and Middlesex Counties.

The mainstem of the Rahway River is 24 miles long, flowing from Union into the Arthur Kill near Linden. It is tidal from the Pennsylvania Railroad Bridge at Rahway down to the mouth. Key tributaries include the East Branch Rahway River, Woodbridge River and Robinson's Branch. Major impoundments are the Middlesex Reservoir, Orange Reservoir, Lower and Upper Echo Lakes and Diamond Mill Pond.

The Elizabeth River is 11 miles long, much of it channelized for flood control purposes. Land uses in the Rahway and Elizabeth Watersheds are mainly residential, commercial and industrial.

The water quality of the Rahway and Elizabeth Rivers are reflective of urbanized streams and past industrial uses. Hazardous waste sites are present in these watersheds. Another potential problem could be landfill leachate, which may contribute to the degradation of the tidal Rahway River as well as to the adjacent Arthur Kill, Marshes Creek and Kings Creek.

Key problems in this watershed include point source pollution, habitat destruction and flood control. The sources of nonpoint pollution that have been identified include construction activities, storm sewers, urban surfaces, roads and combined sewer overflows. All of these conditions have contributed to high stream temperatures, sediment and nutrient loadings, periodic low dissolved oxygen levels and fishkills.

WMA 7 Partnerships:

- ▶ Elizabeth River/Arthur Kill Watershed Association
- ▶ Kean University
- ▶ Rahway River Association
- ▶ Union County Department of Parks



New Jersey Department of Environmental Protection
 Division of Watershed Management
 Bureau of Watershed Planning

Watershed Management Area 7

Arthur Kill

This factsheet is a snapshot of the workplan for Watershed Management Area 7.

Watershed Plans are regional/areawide in scope (i.e. not a study of one location); detail specific projects or management measures to be implemented to achieve the goals of the plan; and set forth a prioritization of the projects or measures identified in the plan. The Department has identified a **Priority Segment for Restoration** in each watershed management area. Funding was provided to conduct a basic characterization and assessment of the segment and to identify restoration projects to address a specific parameter of concern (i.e. fecal coliform). Since 2003, the Department has prepared and adopted hundreds of Total Maximum Daily Load (TMDL) documents to address the impaired waters of the state. **TMDL Implementation Priorities** represent the Bureau of Watershed Planning's focus for implementing the adopted TMDLs. **Active Grant Projects** represent current projects with which the Bureau of Watershed Planning is actively involved. Many of these projects are funded through the Federal 319(h) Nonpoint Source Program.

Watershed Plans:

- ▶ Robinson's Branch (under development)

Priority Segment for Restoration:

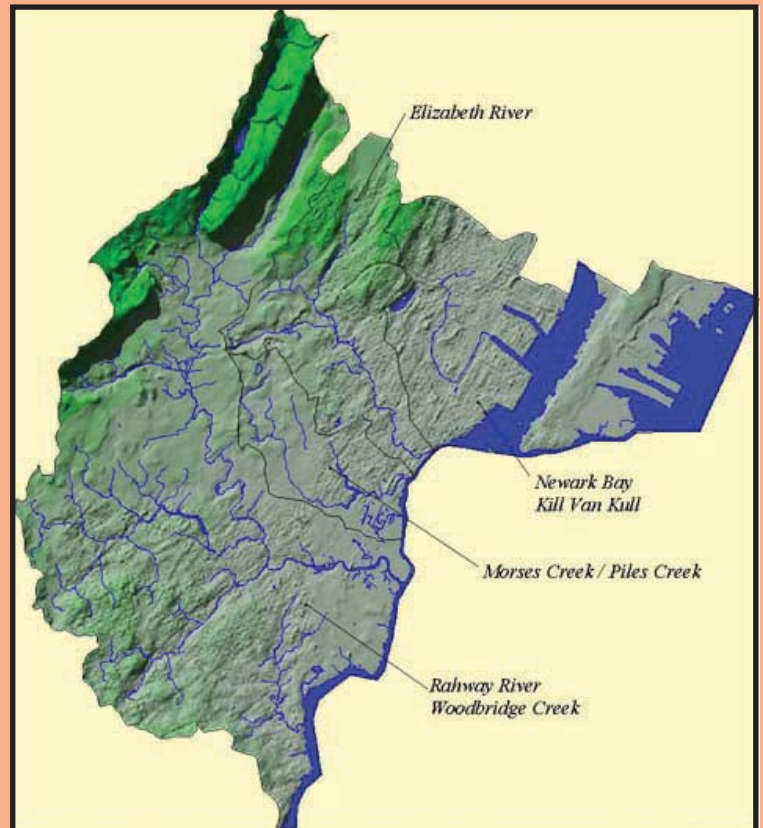
- ▶ Elizabeth River West Branch (non-tidal)

TMDL Implementation Priorities:

- ▶ Echo Lake Eutrophication

Active Grant Projects:

- ▶ Regional Stormwater Management Plan for Robinson's Branch/Union and Middlesex Counties, New Jersey
 - Rutgers University
- ▶ Warinanco Park Lake and Lagoon Restoration Project
 - Union County
- ▶ Phase 2 - Stream Bank Stabilization and Riparian Buffer Restoration of Robinson's Branch, Rahway River Watershed, Union County
 - Rahway River Association
- ▶ South Branch of the Rahway River - Channel Restoration/Protection, Erosion Stabilization Project
 - Middlesex County



For more information on Watershed Management Area 7, contact Michele Bakacs, WMA 7 Area Manager at (609) 292-9247 or email Michele.Bakacs@dep.state.nj.us.

For more information on New Jersey's 20 Watershed Management Areas visit www.nj.gov/dep/watershedmgt