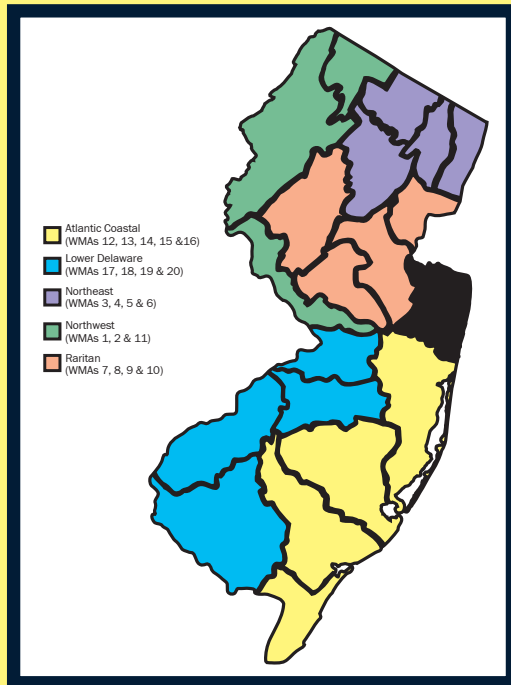




Watershed Management Area 12

Monmouth



Watershed Management Area 12 (WMA 12) extends from Perth Amboy to Point Pleasant Beach. WMA 12 is comprised of an assemblage of coastal subwatersheds, all or a portion of which fall into 56 municipalities in the Raritan Bay and Atlantic Coastal drainage basins. The majority of impacted municipalities are in Monmouth County but several lie within the boundaries of Middlesex and Ocean Counties.

WMA 12 is part of the Atlantic Coastal Plain. The soils tend to be sandy closer to the ocean and to have more clay and silt further inland. In general, topography is fairly flat with some hills primarily along the border between the Inner and Outer Coastal Plains. In northern Monmouth County, Mount Mitchell (elevation 260 feet) is part of the Atlantic Highlands and is one of the highest points on the Atlantic Coast in North America.

Land use ranges from agriculture and forested areas to suburban/urban residential and commercial uses. The northern part of WMA 12 is more densely populated than the southern portion. Over the past decade, land use has shifted to more suburban/urban residential uses.

WMA 12 Partnerships:

- ▶ Manasquan River Watershed Association
- ▶ Monmouth County Planning Board
(Designated Planning Agency)
- ▶ New Jersey Clean Vessel Act Program
Partners
- ▶ NY/NJ Harbor Estuary Program
- ▶ Shark River Watershed Coalition
- ▶ WMA 12 Monmouth Coastal Watersheds
Partnership



New Jersey Department of Environmental Protection
Division of Watershed Management
Bureau of Watershed Planning

Watershed Management Area 12

Monmouth

This factsheet is a snapshot of the workplan for Watershed Management Area 12.

Watershed Plans are regional/areawide in scope (i.e. not a study of one location); detail specific projects or management measures to be implemented to achieve the goals of the plan; and set forth a prioritization of the projects or measures identified in the plan. The Department has identified a **Priority Segment for Restoration** in each watershed management area. Funding was provided to conduct a basic characterization and assessment of the segment and to identify restoration projects to address a specific parameter of concern (i.e. fecal coliform). Since 2003, the Department has prepared and adopted hundreds of Total Maximum Daily Load (TMDL) documents to address the impaired waters of the state. **TMDL Implementation Priorities** represent the Bureau of Watershed Planning's focus for implementing the adopted TMDLs. **Active Grant Projects** represent current projects with which the Bureau of Watershed Planning is actively involved. Many of these projects are funded through the Federal 319(h) Nonpoint Source Program.

Watershed Plans:

- ▶ Ramanessin Brook (under development)
- ▶ Many Mind Creek (under development)
- ▶ Deal Lake Watershed (under development)
- ▶ Wreck Pond (under development)
- ▶ Navesink Swimming River (under development)
- ▶ Mingamahone and March Bog (under development)

Priority Segment for Restoration

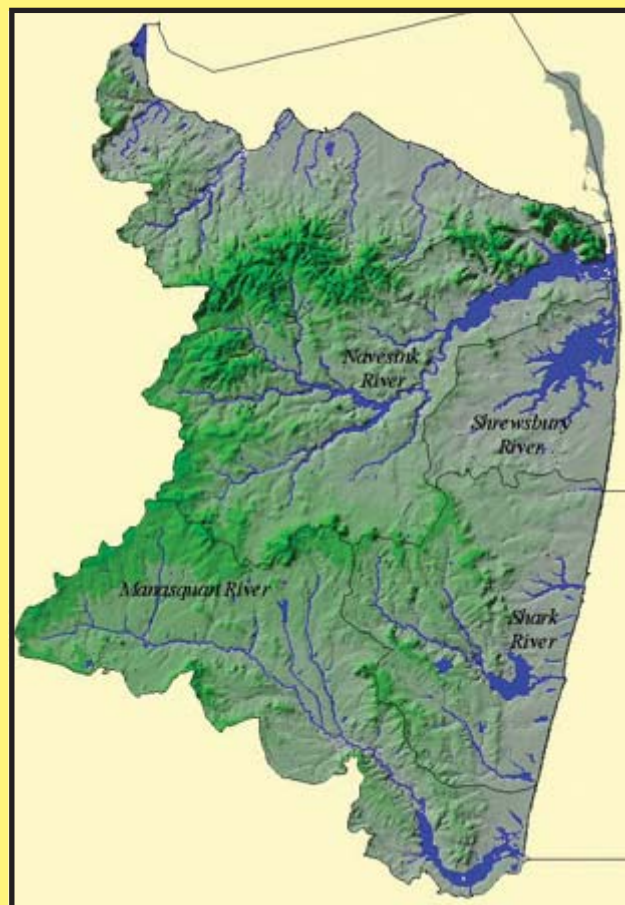
- ▶ Shark River

TMDL Implementation Priorities:

- ▶ Shark River near Neptune City Fecal Coliform
- ▶ Deal Lake Eutrophication

Active Grant Projects:

- ▶ Implementation of Stormwater Best Management Practices (BMPS) at Lake Alberta
 - Neptune Township
- ▶ Stormwater Inlet and Parking Lot Retrofits at the Little Silver Parker House and Sickles Park Recreation Areas
 - Little Silver Borough
- ▶ Manasquan River Riparian Restoration Project
 - Friends of the Monmouth County Park System
- ▶ Innovation Assessment of Sources of Fecal E. Coli in Pathogen Impaired Waterbodies of the Monmouth Coastal Watersheds Region (WMA 12)
 - Monmouth University
- ▶ Ramanessin Brook NPS Pollution Source Assessment and Stormwater Impact Study
 - Monmouth County
- ▶ Removing Siltation and Debris in Sylvan Lake
 - Avon-By-The-Sea Borough
- ▶ Development of a Regional Stormwater Management Plan for the Deal Lake Watershed
 - Deal Lake Commission
- ▶ Regional Stormwater Management Plan for Many Mind Creek
 - Atlantic Highlands Borough Environmental Commission
- ▶ Watershed Management Area 12 Watershed Management Area Plan - Phase I
 - Monmouth County
- ▶ Wreck Pond Brook Watershed Regional Stormwater Management Plan Hydrology and Hydraulic Support
 - New Jersey Department of Agriculture



For more information on Watershed Management Area 12, contact Beth Torpey, WMA 12 Area Manager at (609) 633-1471 or email Beth.Torpey@dep.state.nj.us.

Or visit the project's website at www.shore.co.monmouth.nj.us/area12/

For more information on New Jersey's 20 Watershed Management Areas visit www.nj.gov/dep/watershedmgt