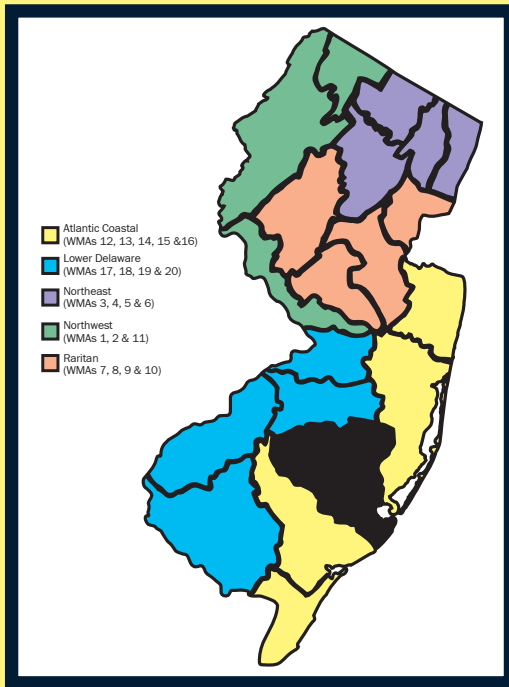




Watershed Management Area 14

Mullica



Watershed Management Area 14 (WMA 14) includes watersheds draining portions of the Pinelands of New Jersey. Major rivers include the Mullica, the Wading River, Nochescatauxin Brook, Atsion Creek, the Bass River, Batsto River, Nescochaque Creek, Landing Creek, Hammonton Creek and the Oswego River. The area lies in Burlington, Atlantic and Ocean Counties.

The Mullica River and tributaries are considered the primary drainage system for the Pinelands. The total area of the drainage basin (Mullica River and tributaries) is some 561 square miles. The area includes the following watersheds: Mullica River, Mechesactauxin Creek, Wading River, Atsion Creek, Batsto River and Doughty Creek.

The Mullica River empties into Great Bay, a large estuarine system. The population centers are Winslow, Galloway and Hammonton.

About 80 percent of this watershed consists of state parks and forests, with the remainder being agricultural and developed areas. Much of these waterways are incorporated in the New Jersey Wild and Scenic River System.

Overall, water quality is good and reflective of natural Pinelands conditions. However, the Mullica River is very sensitive to the effects of human activities due to the acidic and low nutrient nature of the pinelands stream environment. Agricultural and suburban runoff can significantly alter natural conditions by adding nutrients and making streams less acidic. These influences are felt in the more developed southern coastal section of the watershed.

WMA 14 Partnerships:

- ▶ Hammonton Borough
- ▶ Jacques Cousteau National Estuarine Research Reserve
- ▶ New Jersey Clean Vessel Act Program
- ▶ Pinelands Commission
- ▶ Rutgers University



New Jersey Department of Environmental Protection
 Division of Watershed Management
 Bureau of Watershed Planning

Watershed Management Area 14

Mullica

This factsheet is a snapshot of the workplan for Watershed Management Area 14.

Watershed Plans are regional/areawide in scope (i.e. not a study of one location); detail specific projects or management measures to be implemented to achieve the goals of the plan; and set forth a prioritization of the projects or measures identified in the plan. The Department has identified a **Priority Segment for Restoration** in each watershed management area. Funding was provided to conduct a basic characterization and assessment of the segment and to identify restoration projects to address a specific parameter of concern (i.e. fecal coliform). Since 2003, the Department has prepared and adopted hundreds of Total Maximum Daily Load (TMDL) documents to address the impaired waters of the state. **TMDL Implementation Priorities** represent the Bureau of Watershed Planning's focus for implementing the adopted TMDLs. **Active Grant Projects** represent current projects with which the Bureau of Watershed Planning is actively involved. Many of these projects are funded through the Federal 319(h) Nonpoint Source Program.

Watershed Plans:

- ▶ None at the present time

Priority Segment for Restoration

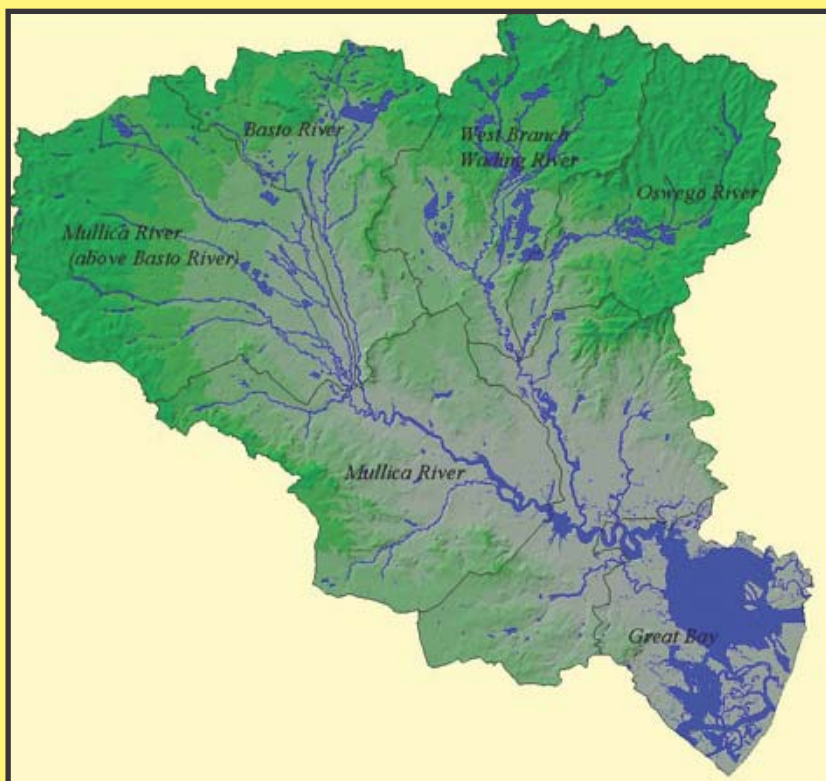
- ▶ Hammonton Lake and headwaters

TMDL Implementation Priorities:

- ▶ Lake Absegami Eutrophication
- ▶ Hammonton Lake Eutrophication

Active Grant Projects:

- ▶ Stormwater Basin Retrofit for Increasing Recharge and Improving Water Quality
 - Pinelands Commission
- ▶ Bass River Township Wastewater Management Plan
 - Bass River Township
- ▶ Decentralized Wastewater Management in the Mullica and other Pinelands Watersheds
 - Pinelands Commission



For more information on Watershed Management Area 14, contact Harold Nebling,
WMA 14 Area Manager at (609) 633-1989 or email Harold.Nebling@dep.state.nj.us.

Or visit the project's website at www.nj.gov/pinelands/mullica

For more information on New Jersey's 20 Watershed Management Areas visit www.nj.gov/dep/watershedmgt